

A comparison of balance velocities, measured velocities and thermomechanically modelled velocities for the Greenland ice sheet

J. L. BAMBER,¹ R. J. HARDY,¹ P. HUYBRECHTS,² IAN JOUGHIN³

¹*Bristol Glaciology Centre, School of Geographical Sciences, University of Bristol, Bristol BS8 1SS, England*

²*Alfred-Wegener-Institut für Polar- und Meeresforschung, Postfach 120161, D-27515 Bremerhaven, Germany*

³*Jet Propulsion Laboratory, California Institute of Technology, Pasadena, CA 91109, U.S.A.*

ABSTRACT. Balance velocities for the Greenland ice sheet have been calculated from a new digital-elevation model, accumulation-rates compilation and an existing ice-thickness grid, using a two-dimensional finite-difference scheme. The pattern of velocities over the ice sheet is presented and compared with velocities derived from synthetic-aperture-radar interferometry for part of northern Greenland and a limited number of global positioning system data. This comparison indicated that the balance-velocity scheme and boundary conditions used here provide a remarkably good representation of the dynamics of the ice sheet inland from the margins. It is suggested, therefore, that these balance-velocity data could provide a valuable method of constraining a numerical ice-sheet model. The balance velocities were compared with the diagnostic velocity field calculated from several different configurations of a numerical ice-sheet model. The general pattern of flow agrees well. The detail, however, is quite different. For example, the large (>300 km) ice stream in the northeast is not generated by the numerical model and much of the detailed flow pattern is completely lost due to the limited model resolution and limitations in the model physics.

1. INTRODUCTION

An understanding of the dynamic behaviour of the Antarctic and Greenland ice sheets is crucial to our ability to model their past and future evolution, especially if the models are going to be used to predict changes in mass balance due to global climate change. Aspects of the dynamics are, however, not well understood due to a scarcity of observations and profound difficulties in modelling them due, largely, to uncertainties in several key boundary conditions, input datasets and physical processes such as the in-situ ice viscosity and basal sliding. Nonetheless, numerical models have been used to examine the response of the Greenland ice sheet (GrIS) to global climate change (Huybrechts and others, 1991).

A number of numerical models have been used to investigate the ice-sheet dynamics (Huybrechts and others, 1991; Letréguilly and others, 1991a, b; Greve, 1997). These models have been used to simulate the ice-sheet geometry, temperature and velocity fields. The models, in general, operate on a relatively coarse resolution (typically 20 km) and are limited by their use of the shallow-ice approximation (SIA). This is based on the assumption that longitudinal stresses are averaged out over distances of 10–20 times the ice thickness (Z) (Paterson, 1994). As a consequence the models do not accurately capture the finer-scale flow (i.e. at scales <10–20 times Z) where longitudinal stresses may be important. Partly as a consequence, outlet glaciers and ice streams, which are responsible for most of the ice discharge, are not adequately modelled. Difficulties in modelling basal sliding adequately for these fast-flow features is also a factor

in their poor representation. Numerical models, however, are the only tool available for investigating how the dynamics might respond to changing climate conditions and it is important, therefore, that (as a minimum requirement) they adequately reproduce the present-day measured or estimated velocity field.

New approaches to deriving the surface-velocity field from remote-sensing data have recently been exploited in Greenland (Fahnestock and others, 1993; Joughin and others, 1996) providing excellent local datasets but, due to various limitations, these techniques have not, to date, provided good global coverage over the whole ice sheet. Balance velocities (U_b), however, can provide this global coverage although they have their own limitations, as discussed elsewhere (Bamber and others, in press). They represent the depth-averaged velocity of an ice sheet that is in balance. A two-dimensional finite-difference scheme was used to calculate balance velocities and fluxes by numerically integrating particle paths down-slope (Budd and Warner, 1996). The results of this computation were then compared with surface velocities derived from synthetic-aperture-radar (SAR) interferometry and then with the output of a fully coupled thermomechanical model for four simulations incorporating different combinations of model physics.

2. THE BALANCE VELOCITIES

The details of the calculation of balance velocities have been presented elsewhere (Bamber and others, in press) and only the relevant points, therefore, are given here. A two-dimen-

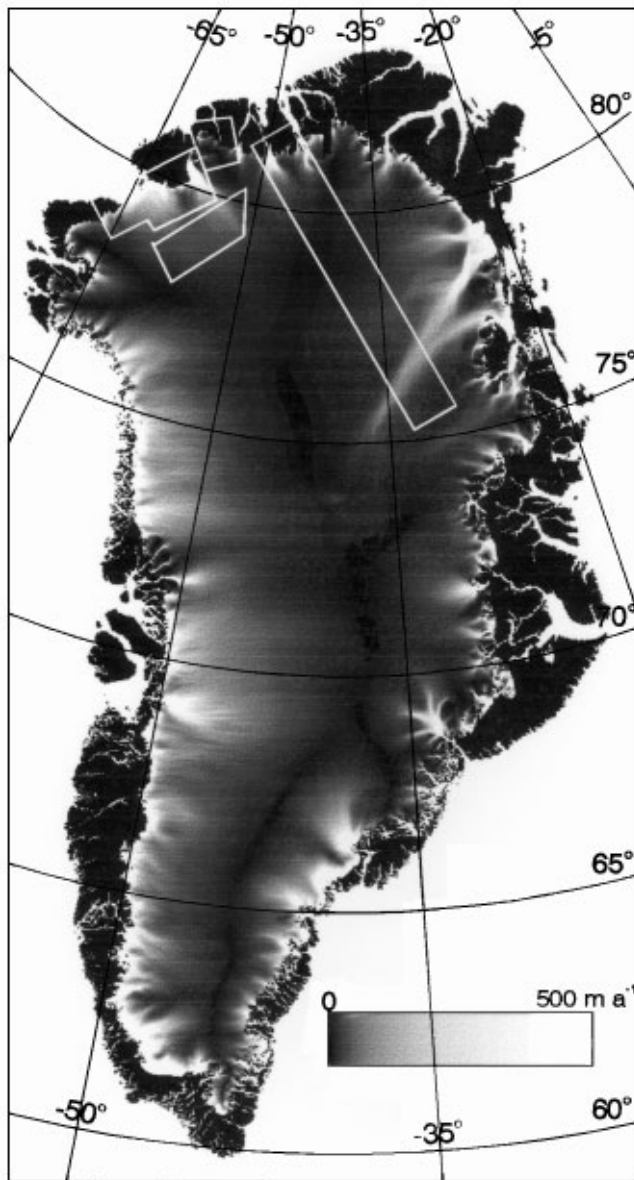


Fig. 1. Calculated balance velocities over the Greenland ice sheet obtained using the two-dimensional computational scheme of Budd and Warner (1996). The locations of the SAR-interferometry velocity data are indicated by the white polygons.

sional finite-difference scheme was used (Budd and Warner, 1996) with the inclusion of ablation near the margins. One of the factors found to be critical in producing an accurate representation of the measured velocity field was the length scale over which longitudinal stresses are assumed to be smoothed out (Bamber and others, in press). This is required so that the SIA is valid and the ice can be assumed to flow downhill. The digital-elevation model (DEM) must be smoothed over this length scale before particle paths can be traced. Here, we used a variable smoothing distance of twenty times the ice thickness. The three input datasets required to calculate U_b are surface slope, net mass balance and ice thickness. We used a new DEM of the ice sheet (Bamber and others, 1997; Bamber and others, 1998), a new accumulation-rate grid (personal communication from Jung-Rothenhäusler, 1998) and an existing ice-thickness grid (Letréguilly and others, 1991b). Ablation was estimated using the positive degree-day approach (Huybrechts and others, 1991).

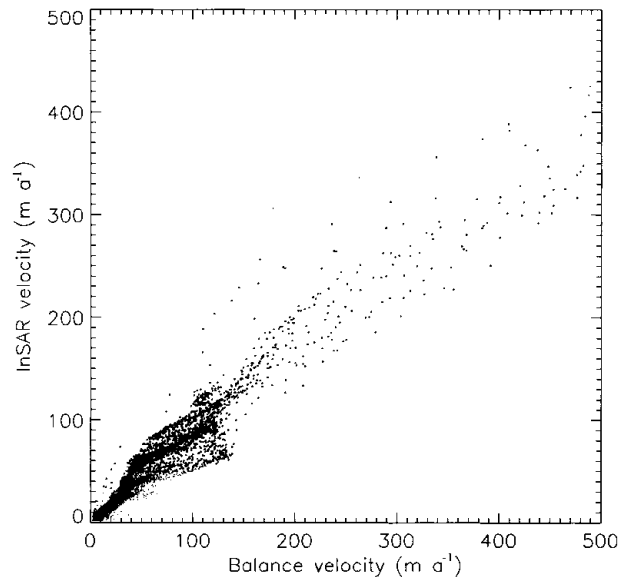


Fig. 2. Balance velocities (U_b) plotted against the InSAR-derived velocities (U_{insar}).

The balance velocities calculated using these datasets are shown in Figure 1. All the main outlet glaciers on the ice sheet are represented in the flow pattern and, irrespective of the state of balance, it is possible to determine the relative proportion of ice flux drained by each glacier within a basin. Figure 1 provides a “global” representation of the depth-averaged velocity field.

U_b represents the estimated depth-averaged velocity for an ice sheet in steady-state. Deviations of this from the measured value are due to one or more of the following causes: (a) errors in the input data and/or the methodology used to calculate U_b ; (b) non-steady-state conditions; and (c) the effect of longitudinal stresses locally. The first of these effects is discussed, in detail, below. The second (imbalance) is unlikely to have an effect, averaged over a basin, of more than 10–15 per cent. The third effect is only important in regions of relatively rapid flow such as in the vicinity of outlet glaciers and ice streams. How well this smaller-scale flow is represented, however, is also critically dependent on the quality of the slope information (i.e. the DEM used) as errors in tracing the particle path are cumulative along a flowline. Furthermore, close to the margins (within about 50 km of the ice edge) the errors in ice thickness (Z) increase substantially as a proportion of the total thickness, which is inversely proportional to U_b . A new 1 km DEM has been produced and new ice-thickness data are being processed to alleviate some of these problems. However, at present, U_b in these marginal areas is less reliable.

Away from margins the errors in U_b are estimated to be 14% based on errors in Z and accumulation of 10% each. A comparison with interferometric SAR (InSAR)-derived surface velocity data (U_{insar}) was undertaken to assess the accuracy of the balance velocities independently. The latter were converted to a surface velocity using the output of the numerical model for a steady-state simulation (Bamber and others, in press). Figure 2 is a plot of U_{insar} vs U_b for ice thicknesses >1000 m. A least-squares linear fit to these data produced the relation:

$$U_{insar} = 1.215U_b - 0.945$$

The correlation coefficient of the fit was 0.946 and the stan-

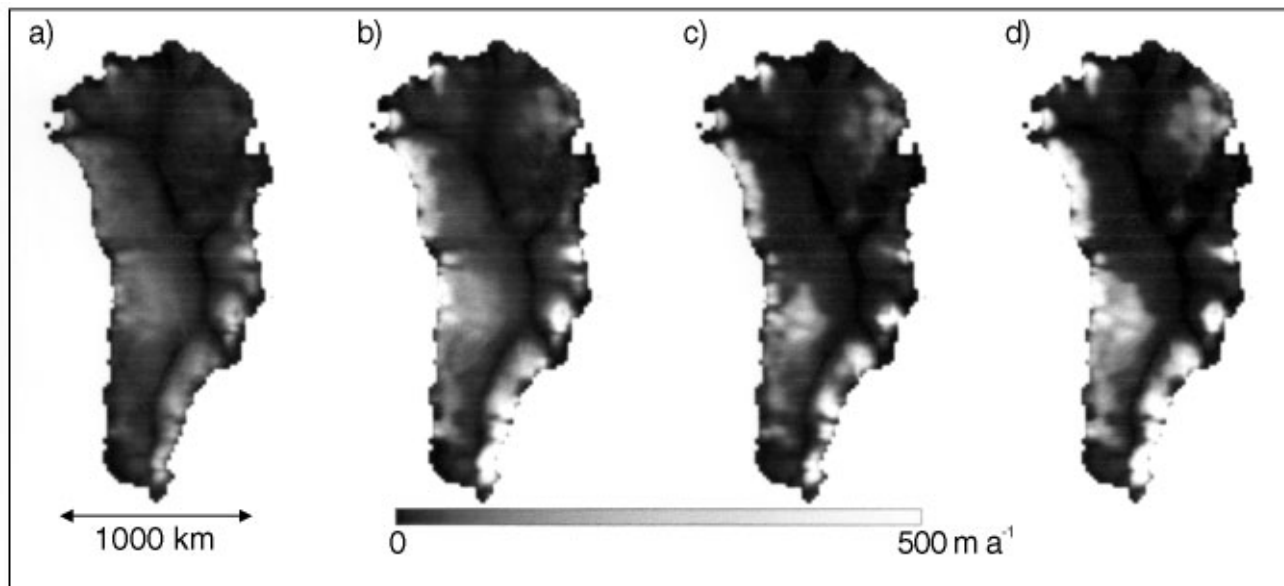


Fig. 3. Dynamics velocities (U_d) computed using the thermomechanical model for the four simulations: (a) isothermal, no sliding; (b) isothermal with sliding; (c) thermodynamics included, no sliding; and (d) thermodynamics included, with sliding. The scaling is the same as in Figure 1.

dard error in U_{insar} was $\pm 9.8 \text{ m a}^{-1}$. There is an excellent correlation between the two measurements, although it is evident that U_b has a positive bias with respect to U_{insar} . The cause of the bias is not clear at present, although the result implies a thickening in the areas compared (indicated by the yellow polygons in Fig. 1). U_b was also compared with nine global-positioning-system (GPS) measurements over the ice sheet which gave a mean difference of $1.0 \text{ m a}^{-1} \pm 4.4 \text{ m a}^{-1}$ for a mean velocity of 30 m a^{-1} or in percentage terms $3.6 \pm 16\%$ (Bamber and others, in press). Consequently, we believe that, inland, U_b provides a reliable measure of the dynamics, suitable for validating and/or constraining a numerical model.

3. THE THERMOMECHANICAL ICE-SHEET MODEL

The numerical ice-sheet model is a fully coupled thermomechanical model that includes basal sliding when the basal ice reaches the pressure-melting point (Huybrechts and others, 1991; Huybrechts, 1996). In this application of the model, all the simulations consider the locally defined depth-averaged velocity for a fixed geometry (“dynamics velocity”, U_d), with a steady-state temperature field. The vertical velocities were also derived assuming a fixed geometry. The set-up of the model has been described in detail elsewhere (Huybrechts and others, 1991; Huybrechts, 1996).

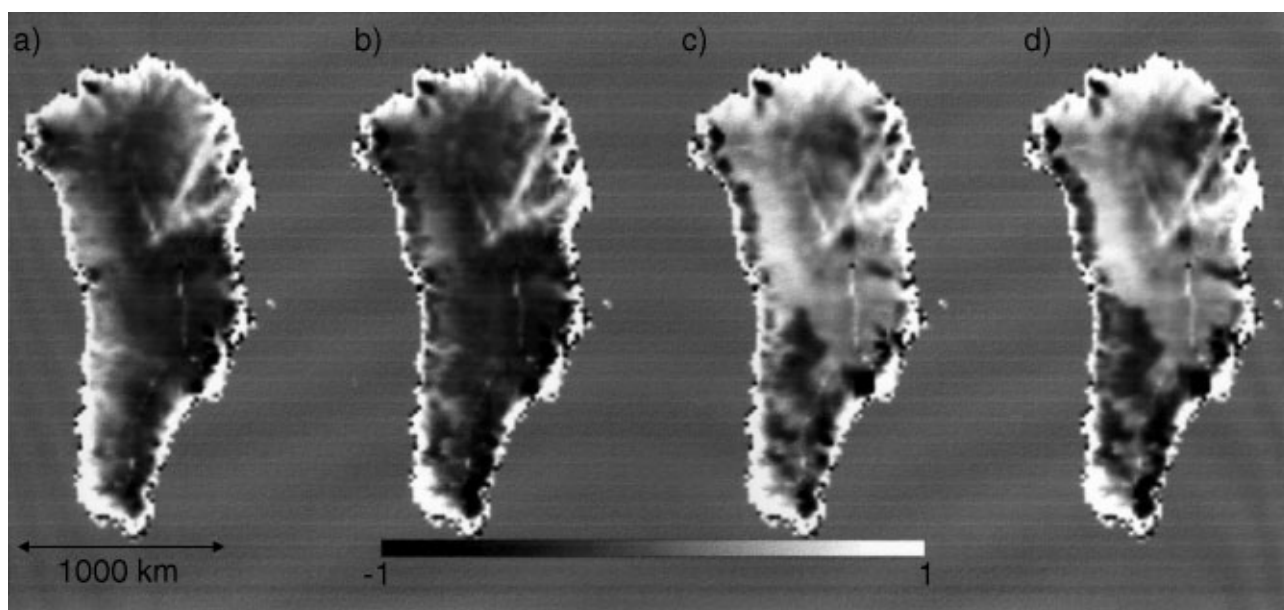


Fig. 4. Normalized difference plot of the balance velocities (U_b) minus the dynamics velocities (U_d) for the four simulations shown in Figure 3.

Four experiments were undertaken with progressively greater physical processes being incorporated and, therefore, hopefully increasing “realism”:

- (1) isothermal ice, no basal sliding;
- (2) isothermal ice, with basal sliding;
- (3) temperature-dependent rheology, no basal sliding; and
- (4) temperature-dependent rheology, with basal sliding.

For the isothermal experiments, the ice temperature was held at -8°C to produce roughly the same average rate factor as for the temperature-dependent cases. The numerical model simulations were computed at 20 km resolution, and the output of the four runs is shown in Figure 3. To aid comparison, the scaling is the same as in Figure 1 ($0\text{--}500\text{ m a}^{-1}$). A direct comparison is, however, not necessarily very meaningful (as discussed later) as U_d can be scaled by a factor of between about 0.1 and 10 (representing the uncertainty in the in-situ ice viscosity). It is, therefore, more useful to plot the ratio or difference of the different velocities. Figure 4 is a plot of the normalized difference between the two velocities: $(U_b - U_d)/(U_b + U_d)$. Thus values greater than zero represent areas where U_b is larger than U_d and vice versa. The background colour is the value for perfect agreement (a ratio of zero). A value of ± 0.333 indicates one velocity is a factor two greater than the other, ± 0.5 is a factor 3 and 0.6666 is a factor 5 different. White regions in Figure 4 are areas where there is relatively close agreement.

4. DISCUSSION

The general pattern of flow shown in Figure 3a–d is as expected as the driving force is surface slope: a common boundary condition. The detail, however, is quite different. For example, the large ($>300\text{ km}$) ice stream in the north-east is not generated by the numerical model and much of the detailed flow pattern is completely lost due to the low model resolution (20 km) or perhaps its inherent inability to resolve flow at the sub-gridscale or the fact that longitudinal stresses are not included.

Near the margins, U_b is generally greater than U_d (light grey to white) even for the cases where basal sliding is included (experiments 2 and 4). In the isothermal cases (experiments 1 and 2), U_d generally decreases with respect to U_b moving out towards the margins. This means the ice in the model is too stiff inland and too soft downstream. The introduction of thermodynamics in experiments 3 and 4 appears to partially remove this effect and the agreement in central Greenland is relatively good, suggesting that the ice rheology and thermodynamics (which are coupled) have been reasonably well-prescribed for the summit region and northern sector. It is important to note that the ice viscosity changes by three orders of magnitude from the ice surface to the bed and that, as a consequence of uncertainties in its in-situ value, it is legitimate to scale U_d by up to a factor 2 to obtain better agreement. Thus a uniform shading across each image in Figure 4 implies a good correlation, requiring a uniform scaling factor to be applied. It is evident that this cannot be done for any of the simulations and, as discussed below, the correlation between U_b and U_d does not exceed 0.194 for any of the four experiments. Interestingly, the incorporation of thermodynamics into experiments 3 and 4 appears to create a slight difference between the northern and southern halves of the ice

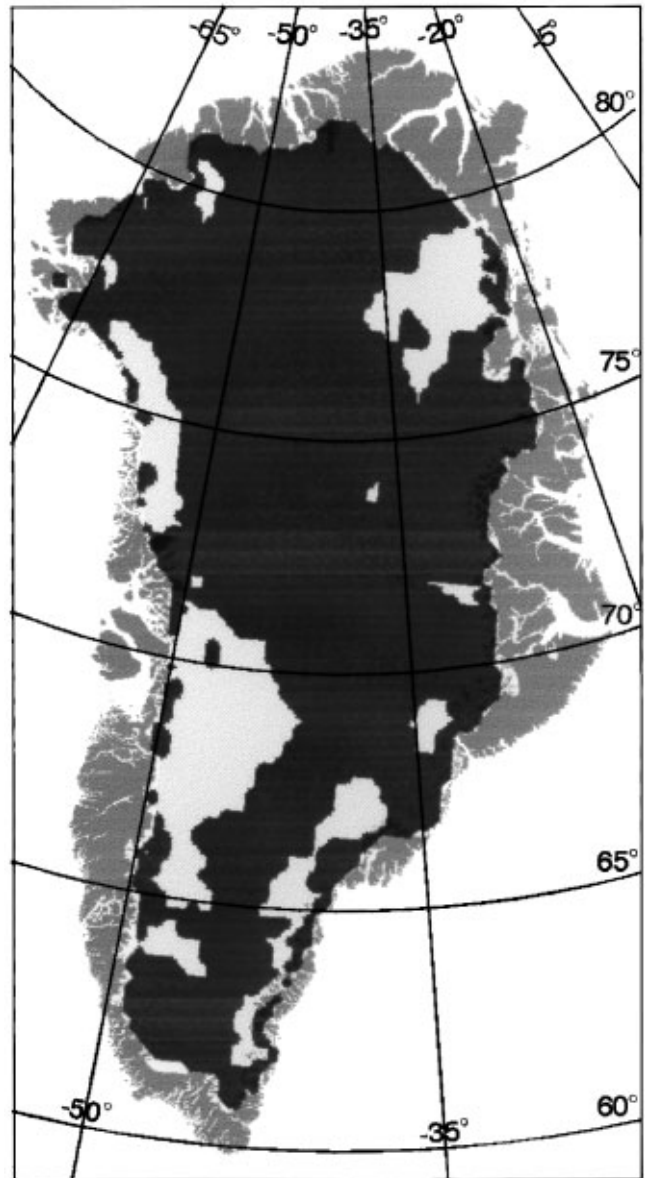


Fig. 5. Areas of basal melting (shaded grey) predicted by the numerical model for simulation 4 (thermodynamics and basal sliding).

sheet with the model generally underestimating velocities, especially toward the margins, for northern Greenland (ice too stiff) and overestimating them for the southern half (ice too soft). There is, in general, relatively poor agreement near the margins and it is not clear, at this stage, if this is due to inaccurate modelling of the thermodynamics, a flawed relationship between ice rheology and temperature or possibly substantial errors in ice thickness. The overestimation of velocities on the southeastern coast does not appear to be due to basal sliding in the model as U_d is too high in all the runs including the non-sliding cases (1 and 3). In this area the ice appears to be too soft in the model in all the experiments. On the western side from about $72\text{--}80^{\circ}\text{N}$ the converse is the case when the thermodynamics are incorporated (the lighter bands in Fig. 4c and d) suggesting that the modelled temperatures in this region are too cold. The V-shaped light area starting near the centre of the ice sheet and going toward the northeast coast is due to two regions of rapid flow that can be clearly seen in Figure 1. The northern “fork” is the northeast ice stream previously identified in SAR imagery (Fahnestock and others, 1993).

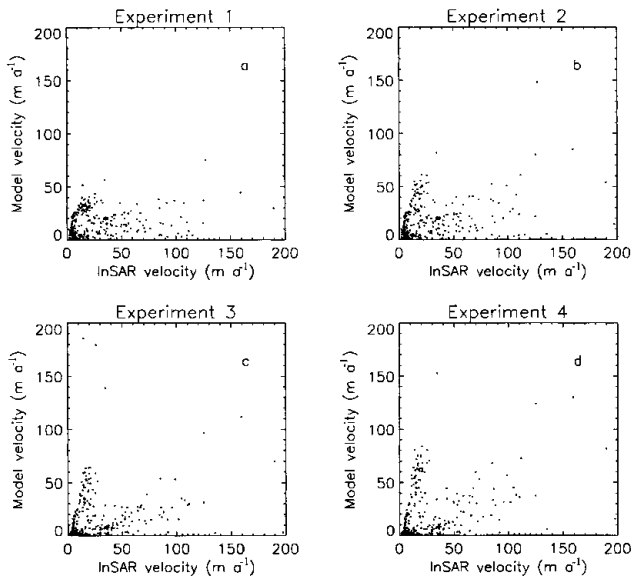


Fig. 6. InSAR-derived velocities (U_{insar}) plotted against the model velocities (U_{d}) for the four experiments described in the text.

Figure 5 is a plot of areas of basal melting produced by the model, indicating those areas where sliding can take place. It can be seen that there is an area of basal melt which incorporates much of the northeast ice stream. However, neither experiments incorporating sliding (2 and 4) adequately reproduce this feature although they do show a general improvement in the agreement between U_{b} and U_{d} compared with the non-sliding cases in this region. This is most noticeable when comparing experiments 1 and 2 (Fig. 4a and b). The region of large positive differences (i.e. $U_{\text{b}} > U_{\text{d}}$) is both narrower and shorter in Figure 4b. The southern “fork” (which is less pronounced in Fig. 1) mainly feeds into Waltershausen Gletscher. Figure 5 indicates that no basal melting is produced in this region so the incorporation of sliding makes no difference here. The inclusion of thermodynamics, however, significantly reduces the agreement for this flow feature.

At present, only a qualitative comparison has been undertaken. To obtain a more profound understanding of the cause of the differences, it will be necessary to carry out an inverse-modelling experiment, where the balance velocities are used to determine what the ice viscosity and/or thermodynamics must be to reproduce the spatial pattern of U_{b} . To do this, however, will require improvements in the ice-thickness grid, particularly near the margins (as this directly affects the accuracy of U_{b}).

The output of the numerical model has also been compared with U_{insar} and the results of this comparison, for the four experiments, are shown in Figure 6. There is no obvious pattern that can be seen although the inclusion of thermodynamics does seem to produce a slight bi-modal distribution (Fig. 6c and d). The correlation coefficients between the InSAR and modelled velocities are all low, with the highest value being obtained for experiment 2 ($r^2 = 0.195$).

A similar picture emerges when U_{b} is plotted against U_{d} . Figure 4 shows the spatial pattern of differences, but does not provide an adequate picture of the overall correlation between the two datasets. This is presented in graphical form in Figure 7. As with the comparison with the InSAR data, the correlations are low with the highest value, in this case, being for experiment 4 ($r^2 = 0.194$). As with the In-

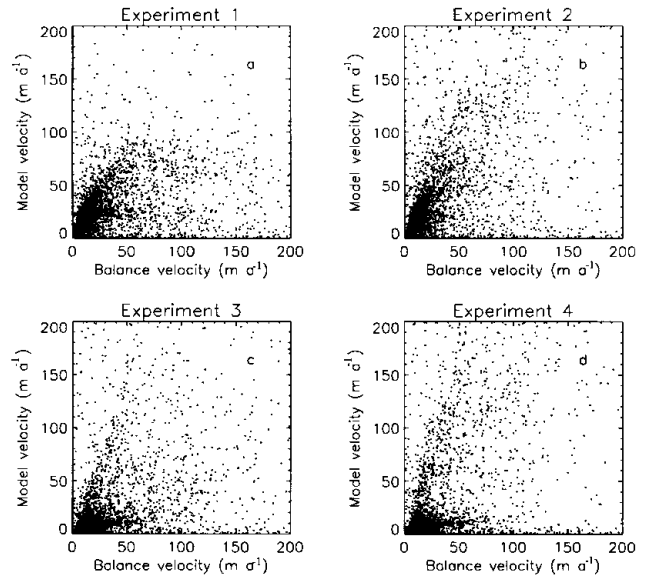


Fig. 7. Balance velocities (U_{b}) plotted against the model velocities (U_{d}) for the four experiments described in the text.

SAR comparison, the inclusion of thermodynamics produces a slightly bi-modal distribution which we believe is related to the north–south differences discussed above. Due to the large uncertainty in the form of the sliding law and the in-situ viscosity of the ice the agreement between U_{b} and U_{d} is almost equally poor for all four experiments and it is, therefore, difficult to conclude, at this stage whether the addition of further physics into the model (in the form of thermodynamics and basal sliding) actually improves the “realism” of the simulated velocity field. With better constraints on the sliding law and in-situ rheology this uncertainty will be removed.

5. CONCLUSIONS

Balance velocities have been calculated for the Greenland ice sheet using a two-dimensional finite-difference scheme and two new input datasets. These velocities have been compared with surface-velocity measurements derived from SAR interferometry and GPS data. These comparisons have provided confidence in both the computational scheme and the datasets used inland from the margins. The “validated” balance velocities and SAR interferometry have been used to examine the behaviour of a three-dimensional fully coupled thermomechanical model which includes basal sliding, but not longitudinal stresses. Large differences in both the pattern and magnitude of the velocity field were found. The latter, it is believed, is partly due to the uncertainty in the in-situ viscosity of the ice. The former is due, we believe, to the inability of the model to reproduce flow at the grid to sub-grid scale. Ice streams and outlet glaciers, that drain most of the ice from the interior, are very poorly represented in the model due to its resolution and the physics being limited by the use of the shallow-ice approximation and the uncertainty in basal friction when basal melting is generated in the model. The short-term response of the GrIS to global warming appears to be dominated by the surface balance, but it is apparent that the use of models, such as the one pre-

sented here, as a tool for predicting the dynamic response of the GrIS to global warming, is questionable.

REFERENCES

- Bamber, J. L., S. Ekholm and W. B. Krabill. 1997. A digital elevation model of the Greenland ice sheet and validation with airborne altimeter data. In *Third ERS Scientific Symposium, 17–21 March 1997, Florence, Italy. Proceedings, Vol. 2*. Frascati, Italy, European Space Agency, 843–847. (ESA Publication SP-414.)
- Bamber, J. L., S. Ekholm and W. B. Krabill. 1998. The accuracy of satellite radar altimeter data over the Greenland ice sheet determined from airborne laser data. *Geophys. Res. Lett.*, **25**(16), 3177–3180.
- Bamber, J. L., R. J. Hardy and I. Joughin. In press. An analysis of balance velocities over the Greenland ice sheet and comparison with synthetic aperture radar interferometry. *J. Glaciol.*
- Budd, W. F. and R. C. Warner. 1996. A computer scheme for rapid calculations of balance-flux distributions. *Ann. Glaciol.*, **23**, 21–27.
- Davis, C. H., C. A. Kluever and B. J. Haines. 1998. Elevation change of the southern Greenland ice sheet. *Science*, **279**(5359), 2086–2088.
- Fahnestock, M., R. Bindshadler, R. Kwok and K. Jezek. 1993. Greenland ice sheet surface properties and ice dynamics from ERS-1 SAR imagery. *Science*, **262**(5139), 1530–1534.
- Greve, R. 1997. Application of a polythermal three-dimensional ice sheet model to the Greenland ice sheet: response to steady-state and transient climate scenarios. *J. Climate*, **10**(5), 901–918.
- Huybrechts, P. 1996. Basal temperature conditions of the Greenland ice sheet during the glacial cycles. *Ann. Glaciol.*, **23**, 226–236.
- Huybrechts, P., A. Letréguilly and N. Reeh. 1991. The Greenland ice sheet and greenhouse warming. *Global and Planetary Change*, **3**(4), 399–412.
- Joughin, I., R. Kwok and M. Fahnestock. 1996. Estimation of ice-sheet motion using satellite radar interferometry: method and error analysis with application to Humboldt Glacier, Greenland. *J. Glaciol.*, **42**(142), 564–575.
- Letréguilly, A., N. Reeh and P. Huybrechts. 1991a. The Greenland ice sheet through the last glacial–interglacial cycle. *Palaeogeogr., Palaeoclimatol., Palaeoecol.*, **90**(4), 385–394.
- Letréguilly, A., P. Huybrechts and N. Reeh. 1991b. Steady-state characteristics of the Greenland ice sheet under different climates. *J. Glaciol.*, **37**(125), 149–157.
- Paterson, W. S. B. 1994. *The physics of glaciers. Third edition*. Oxford, etc., Elsevier.
- Reeh, N. 1991. Parameterization of melt rate and surface temperature on the Greenland ice sheet. *Polarforschung*, **59**(3), 113–128.