

# INFECTION CONTROL AND HOSPITAL EPIDEMIOLOGY<sup>®</sup>

## EDITORIAL

### The Price of a Surgical-Site Infection: More Than Just Excess Length of Stay

EDWARD S. WONG, MD

722

## ORIGINAL ARTICLES

### The Impact of Surgical-Site Infections in the 1990s:

#### Attributable Mortality, Excess Length of Hospitalization, and Extra Costs

KATHRYN B. KIRKLAND, MD; JANE P. BRIGGS, BSN; SHARON L. TRIVETTE, RN; WILLIAM E. WILKINSON, PhD;  
DANIEL J. SEXTON, MD

725

### An Outbreak of Hospital-Acquired Hepatitis B Virus Infection Among Patients Receiving Chronic Hemodialysis

YVAN J.F. HUTIN, MD, MSc; SUSAN T. GOLDSTEIN, MD; JAY K. VARMA, MD; JOAN B. O'DAIR, RN, MPH;  
ERIC E. MAST, MD, MPH; CRAIG N. SHAPIRO, MD; MIRIAM J. ALTER, PhD

731

### Safety of Peripheral Intravenous Catheters in Children

RUTH B. SHIMANDLE, RN, MPH; DANIEL JOHNSON, MD; MARK BAKER, MD;  
NAOMI STOTLAND, MD; THEODORE KARRISON, PhD; PAUL M. ARNOW, MD

736

### "Pulse" Nasal Mupirocin Maintenance Regimen in Patients Undergoing Continuous Ambulatory Peritoneal Dialysis

JOSEPH M. MYLOTTE, MD, CIC; LUCINDA KAHLER, BS, MS; ELLEN JACKSON, RN

741

### An Outbreak of Gram-Negative Bacteremia in Hemodialysis Patients Traced to Hemodialysis Machine Waste Drain Ports

SUSAN A. WANG, MD, MPH; RACHEL B. LEVINE, MD; LORETTA A. CARSON, MS; MATTHEW J. ARDUINO, DRPH;  
TERESA KILLAR, RN; F. GREGORY GRILLO, MD; MICHELE L. PEARSON, MD; WILLIAM R. JARVIS, MD

746

### A Canadian Survey of Prophylactic Antibiotic Use Among Hip-Fracture Patients

DICK ZOUTMAN, MD; LAURENCE CHAU, MD; JAMES WATTERSON, MD; THOMAS MACKENZIE, MD; MARINA DJURFELDT, MSc

752

## CONCISE COMMUNICATIONS

### Outbreak of *Stenotrophomonas maltophilia* Bacteremia Among Patients Undergoing Bone Marrow Transplantation: Association With Faulty Replacement of Handwashing Soap

JEFFREY D. KLAUSNER, MD, MPH; CAROL ZUKERMAN, RN, CIC; AJIT P. LIMAYE, MD; LAWRENCE COREY, MD

756

### Usefulness of Pulsed-Field Gel Electrophoresis in Assessing Nosocomial Transmission of Pertussis

MICHÈLE NOUVELLON, MD; JEAN-FRANÇOIS GEHANNO, MD; MARTINE PESTEL-CARON, PhD;  
CHRISTIAN WEBER; JEAN-FRANÇOIS LEMELAND, PhD; NICOLE GUISSO, PhD

758

### A Case-Control Study to Detect Modifiable Risk Factors for Colonization With Vancomycin-Resistant Enterococci

MARK LOEB, MD, MSc; SUZETTE SALAMA, PhD; MAXINE ARMSTRONG-EVANS, RN; GINA CAPRETTA; JAN OLDE, RN, CIC

760

# Are You Doing All You Can to Stop Methicillin-Resistant *Staphylococcus aureus* Outbreaks Where They Originate...

The Nares

- *Bactroban* Nasal is indicated for eradication of nasal colonization with methicillin-resistant *S. aureus* (MRSA) in adult patients and healthcare workers as part of a comprehensive infection control program to reduce the risk of infection among high-risk patients during MRSA outbreaks.<sup>1</sup>
- In a hospital study, *Bactroban* Nasal contributed to a dramatic reduction in MRSA infections and vancomycin costs during an outbreak.<sup>2</sup>
- Excellent safety profile<sup>1</sup>

The most frequently reported adverse events were headache (9%), rhinitis (6%), respiratory disorder (including upper respiratory tract congestion) (5%), pharyngitis (4%) and taste perversion (3%). Safety in children under 12 years of age has not been established in controlled clinical trials.

Contraindications ... Do not use *Bactroban* Nasal in patients with known hypersensitivity to any of the constituents of the product.

Please see brief summary of prescribing information on adjacent page.

**References:** 1. *Bactroban*® Nasal prescribing information, 1995. 2. Reagan DR, Dula RT, Palmer BH, et al. Control of MRSA in a VAMC with limited resources. *Prog Abstr 31st Interscience Conference on Antimicrobial Agents and Chemotherapy*, Chicago, U.S.A., Sept. 29-Oct. 2, 1991, p 104.

**SB** *SmithKline Beecham*  
Pharmaceuticals

BN2760 ©SmithKline Beecham, 1999 Philadelphia, PA

Single-use tube  
(actual size)



**Bactroban**  
**Nasal** mupirocin  
calcium

2% ointment for intranasal use

**BACTROBAN® NASAL (mupirocin calcium ointment), 2%**  
**Brief summary. For complete prescribing information, see package insert.**

**INDICATIONS AND USAGE**

*Bactroban Nasal* is indicated for eradication of nasal colonization with methicillin-resistant *Staphylococcus aureus* in adult patients and health care workers as part of a comprehensive infection control program to reduce the risk of infection among patients at high risk of methicillin-resistant *S. aureus* infection during institutional outbreaks of infections with this pathogen.

**NOTE:**

- (1) There are insufficient data at this time to establish that this product is safe and effective as part of an intervention program to prevent autoinfection of high-risk patients from their own nasal colonization with *S. aureus*.
- (2) There are insufficient data at this time to recommend use of *Bactroban Nasal* for general prophylaxis of any infection in any patient population.
- (3) Greater than 90% of subjects/patients in clinical trials had eradication of nasal colonization 2 to 4 days after therapy was completed. Approximately 30% recolonization was reported in one domestic study within 4 weeks after completion of therapy. These eradication rates were clinically and statistically superior to those reported in subjects/patients in the vehicle-treated arms of the adequate and well-controlled studies. Those treated with vehicle had eradication rates of 5% to 30% at 2 to 4 days post-therapy with 85% to 100% recolonization within 4 weeks.

**CONTRAINDICATIONS**

*Bactroban Nasal* is contraindicated in patients with known hypersensitivity to any of the constituents of the product.

**WARNINGS**

**AVOID CONTACT WITH THE EYES.** Application of *Bactroban Nasal* to the eye under testing conditions has caused severe symptoms such as burning and tearing. These symptoms resolved within days to weeks after discontinuation of the ointment.

In the event of a sensitization or severe local irritation from *Bactroban Nasal*, usage should be discontinued.

**PRECAUTIONS**

**General:** As with other antibacterial products, prolonged use may result in overgrowth of nonsusceptible microorganisms, including fungi. (See **DOSE AND ADMINISTRATION** in complete prescribing information.)

**Information for Patients:** Patients should: apply approximately one-half of the ointment from the single-use tube directly into one nostril and the other half into the other nostril; avoid contact of the medication with the eyes; discard the tube after using; press the sides of the nose together and gently massage after application to spread the ointment throughout the inside of the nostrils; and discontinue using *Bactroban Nasal* and call a health care practitioner if sensitization or severe local irritation occurs.

**Drug Interactions:** The effect of the concurrent application of intranasal mupirocin calcium and other intranasal products has not been studied. Do not apply mupirocin calcium ointment, 2% concurrently with any other intranasal products.

**Carcinogenesis, Mutagenesis, Impairment of Fertility:**

Long-term studies in animals to evaluate carcinogenic potential of mupirocin calcium have not been conducted. Results of the following studies performed with mupirocin calcium or mupirocin sodium *in vitro* and *in vivo* did not indicate a potential for mutagenicity: rat primary hepatocyte unscheduled DNA synthesis, sediment analysis for DNA strand breaks, *Salmonella* reversion test (Ames), *Escherichia coli* mutation assay, metaphase analysis of human lymphocytes, mouse lymphoma assay, and bone marrow micronuclei assay in mice. Reproduction studies were performed in rats with mupirocin administered subcutaneously at doses up to 40 times the human intranasal dose (approximately 20 mg mupirocin per day) on a mg/m<sup>2</sup> basis and revealed no evidence of impaired fertility from mupirocin sodium.

**Pregnancy: Teratogenic Effects. Pregnancy Category B.**

Reproduction studies have been performed in rats and rabbits with mupirocin administered subcutaneously at doses up to 65 and 130 times, respectively, the human intranasal dose (approximately 20 mg mupirocin per day) on a mg/m<sup>2</sup> basis and revealed no evidence of harm to the fetus due to mupirocin. There are, however, no adequate and well-controlled studies in pregnant women. Because animal reproduction studies are not always predictive of human response, this drug should be used during pregnancy only if clearly needed.

**Nursing Mothers:** It is not known whether this drug is excreted in human milk. Because many drugs are excreted in human milk, exercise caution when *Bactroban Nasal* is administered to a nursing woman.

**Pediatric Use:** Safety in children under the age of 12 years has not been established. (See **CLINICAL PHARMACOLOGY** in complete prescribing information.)

**ADVERSE REACTIONS**

**Clinical Trials:** In clinical trials, 210 domestic and 2,130 foreign adult subjects/patients received *Bactroban Nasal* ointment. Less than 1% of domestic or foreign subjects and patients in clinical trials were withdrawn due to adverse events. In domestic clinical trials, 17% (36/210) of adults treated with *Bactroban Nasal* ointment reported adverse events thought to be at least possibly drug-related. The incidence of adverse events that were reported in at least 1% of adults enrolled in domestic clinical trials were as follows: headache, 9%; rhinitis, 6%; respiratory disorder, including upper respiratory tract congestion, 5%; pharyngitis, 4%; taste perversion, 3%; burning/stinging, 2%; cough, 2%; and pruritus, 1%.

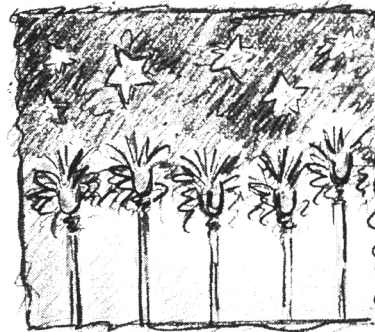
The following events thought possibly drug-related were reported in less than 1% of adults enrolled in domestic clinical trials: blepharitis, diarrhea, dry mouth, ear pain, epistaxis, nausea and rash. All adequate and well-controlled clinical trials have been performed using *Bactroban Nasal* ointment, 2% in one arm and the vehicle ointment in the other arm of the study.

**OVERDOSAGE**

Following single or repeated intranasal applications of *Bactroban Nasal* to adults, no evidence for systemic absorption of mupirocin was obtained.

Manufactured by **DPT Laboratories**, San Antonio, TX 78215  
Distributed by **SmithKline Beecham Pharmaceuticals**, Philadelphia, PA 19101

BR8-BN-L3



## CENTRAL STERILE PROCESSING MANAGER



Eisenhower Medical Center is looking for a dynamic, innovative, self-motivated individual to coordinate the CSP Services in a growing organization comprised of inpatient and outpatient services. This winter, CS is moving into a new surgical pavillion. Presently, we are working toward a combined perpetual inventory based case cart and central distribution system. We are seeking either an experienced OR/CS Registered Nurse or an experienced Central Service Manager who is currently certified. This individual must be able to ensure that all standard CS procedures are consistent with the national standards and guidelines for CSP (AORN/AAMI/CDC).

Situated on a 100-acre campus located near Palm Springs, Eisenhower Medical Center is a dynamic, progressive health care complex comprised of a 261-bed hospital, the Annenberg Center for Health Sciences, the Barbara Sinatra Children's Center, and the Betty Ford Center. A not-for-profit corporation, this multi-faceted institution represents high quality health care for the residents of and visitors to the desert resort communities and provides a full range of educational services for the public and health care professionals.

In addition to professional opportunity, we offer a generous benefit package including relocation reimbursement, a competitive salary, and a beautiful environment in which to live and play. If interested, please send resume to: Human Resources, Eisenhower Medical Center, 39000 Bob Hope Drive, Rancho Mirage, CA. 92270. Or call to request an employment application: (760) 773-1356.



**EISENHOWER MEDICAL CENTER**

Visit our website at [www.emc.org](http://www.emc.org)

EOE

# First in Safety

**W**ith their hands, caregivers express their thoughts, construct their dreams, and comfort the sick. And with their hands, caregivers deliver health using medical devices that can also inadvertently injure.

For years, caregivers have been able to place their protection in the experienced hands of BD. We have the *most* safety-engineered products,

the *most* customers, the *most* conversions, the *most* educational programs and the *most* influence on the process of safety. At BD, we put safety first.

#### ***Practical Innovation, Sensible Solutions***

With more than 65 years of providing safety-engineered devices, educational services and value programs designed to help prevent occupational injury, BD is truly **First in Safety**.



**EDITORIAL OFFICES**

Vanderbilt University School of Medicine  
A-1131 Medical Center North  
Nashville, TN 37232-2637  
(615) 343-1095; (615) 343-1882 (FAX)  
Email: iche@mcmail.vanderbilt.edu

**EDITOR**

Michael D. Decker, MD, MPH

**MANAGING EDITOR**

Susan Cantrell

**STATISTICAL EDITOR**

Beverly G. Mellen, PhD

**SENIOR ASSOCIATE EDITORS**

C. Glen Mayhall, MD

Gina Pugliese, RN, MS

William Schaffner, MD

**ASSOCIATE EDITORS**

Donald A. Goldmann, MD

Didier Pittet, MD, MS

Andreas Widmer, MD, MS

**SECTION EDITORS****Beyond Infection Control:****The New Hospital Epidemiology**

Bryan P. Simmons, MD

Stephen B. Kritchevsky, PhD

Memphis, Tennessee

Wing Hong Seto, MD

Hong Kong

**Disinfection and Sterilization**

William A. Rutala, PhD, MPH

Chapel Hill, North Carolina

**Emerging Infectious Diseases**

Larry J. Strausbaugh, MD

Portland, Oregon

Robert W. Pinner, MD

Atlanta, Georgia

**From the Laboratory**

Marcus Zervos, MD

Royal Oak, Michigan

Fred C. Tenover, PhD

Atlanta, Georgia

**Information Management**

John A. Sellick, DO

Buffalo, New York

**The International Perspective**

Mary D. Nettleman, MD, MS

Richmond, Virginia

**Issues in Surgery**

James T. Lee, MD, PhD

St. Paul, Minnesota

**Medical News**

# INFECTION CONTROL AND HOSPITAL EPIDEMIOLOGY<sup>®</sup>

## EDITORIAL ADVISORY BOARD

- |                                      |                                       |
|--------------------------------------|---------------------------------------|
| Jacques F. Acar, MD                  | Paris, France                         |
| J. Wesley Alexander, MD              | Cincinnati, Ohio                      |
| Paul Arnow, MD                       | Chicago, Illinois                     |
| Graham A.J. Ayliffe, MD              | Birmingham, United Kingdom            |
| Neil L. Barg, MD                     | Yakima, Washington                    |
| Elizabeth Ann Bolyard, RN, MPH, CIC  | Atlanta, Georgia                      |
| John M. Boyce, MD                    | Providence, Rhode Island              |
| Professor Dr. Ilja Braveny           | Munich, Federal Republic of Germany   |
| Christian Brun-Buisson, MD           | Creteil, France                       |
| Charles Bryan, MD                    | Columbia, South Carolina              |
| Donald E. Craven, MD                 | Boston, Massachusetts                 |
| Sue Crow, MSN, RN, CIC               | Shreveport, Louisiana                 |
| Franz Daschner, MD                   | Freiburg, Federal Republic of Germany |
| Leigh G. Donowitz, MD                | Charlottesville, Virginia             |
| Charles E. Edmiston, Jr., PhD        | Milwaukee, Wisconsin                  |
| Theodore C. Eickhoff, MD             | Denver, Colorado                      |
| Bruce Farber, MD                     | Manhasset, New York                   |
| Victoria J. Fraser, MD               | St. Louis, Missouri                   |
| Peter C. Fuchs, MD, PhD              | Black Butte, Oregon                   |
| Richard A. Garibaldi, MD             | Farmington, Connecticut               |
| Robert Gaynes, MD                    | Atlanta, Georgia                      |
| Velvl Greene, PhD, MPH               | Beer Sheva, Israel                    |
| David W. Gregory, MD                 | Nashville, Tennessee                  |
| David K. Henderson, MD               | Bethesda, Maryland                    |
| Peter N.R. Heseltine, MD             | Los Angeles, California               |
| Karen Hoffmann, RN, CIC, MS          | Chapel Hill, North Carolina           |
| Marguerite McMillan Jackson, RN, PhD | San Diego, California                 |
| Janine Jagger, MPH, PhD              | Charlottesville, Virginia             |
| William R. Jarvis, MD                | Atlanta, Georgia                      |
| Douglas S. Kernodle, MD              | Nashville, Tennessee                  |
| Robert H. Latham, MD                 | Nashville, Tennessee                  |
| Lewis B. Lefkowitz, MD               | Nashville, Tennessee                  |
| Hsieh-Shong Leu, MD, MSc             | Taipei, Taiwan                        |
| Jack Levy, MD                        | Brussels, Belgium                     |
| Victor Lorian, MD                    | Bronx, New York                       |
| Dennis G. Maki, MD                   | Madison, Wisconsin                    |
| William J. Martone, MD               | Bethesda, Maryland                    |
| Allison McGeer, MD                   | Toronto, Ontario, Canada              |
| John E. McGowan, Jr., MD             | Atlanta, Georgia                      |
| Jonathan L. Meakins, MD, DSc         | Montreal, Quebec, Canada              |
| Raf Mertens, MD                      | Brussels, Belgium                     |
| Robert R. Muder, MD                  | Pittsburgh, Pennsylvania              |
| Joseph M. Mylotte, MD, CIC           | Buffalo, New York                     |
| Lindsay Nicolle, MD                  | Winnipeg, Manitoba, Canada            |
| Juhani Ojajarvi, MD                  | Helsinki, Finland                     |
| Michael T. Osterholm, PhD, MPH       | Minneapolis, Minnesota                |
| Ian Evans Patterson, MD              | San Antonio, Texas                    |

# INFECTION CONTROL AND HOSPITAL EPIDEMIOLOGY<sup>®</sup>

## CONTENTS

Continued from cover

### TOPICS IN LONG-TERM CARE

#### **Infection Control Programs in Long-Term-Care Facilities: Structure and Process**

BARBARA A. GOLDRICK, RN, PhD

764

### INFORMATION MANAGEMENT

#### **staffTRAK-TB: Software for Surveillance of Tuberculosis Infection in Healthcare Workers**

DALE R. BURWEN, MD, MPH; M. FRANKLIN SEAWRIGHT, BS

770

#### **Satellite Videoconferencing for Healthcare Workers: Audience Characteristics and the Importance of Continuing Education Credits**

II-LUN CHEN, MD; JOSEPH N. ECKHARDT, MPH; RONDA L. SINKOWITZ-COCHRAN, MPH; WILLIAM R. JARVIS, MD

778

### MEDICAL NEWS

GINA PUGLIESE, RN, MS; MARTIN S. FAVERO, PhD

781

### SHEA NEWS

ANDREAS VOSS, MD, PhD

784

To view abstracts of these articles,  
visit us on the Internet at <http://www.slackinc.com/general/iche>

THE PUBLICATION OF ADVERTISING IN THE JOURNAL DOES NOT CONSTITUTE ANY GUARANTEE OR ENDORSEMENT BY THE SOCIETY FOR HEALTHCARE EPIDEMIOLOGY OF AMERICA OR SLACK INCORPORATED OF THE ADVERTISED PRODUCT OR SERVICE OR OF CLAIMS MADE BY THE ADVERTISER. THE PUBLICATION OF ARTICLES AND OTHER EDITORIAL MATERIAL IN THE JOURNAL DOES NOT NECESSARILY REPRESENT THE POLICY RECOMMENDATIONS OR ENDORSEMENT BY THE SOCIETY.

**PUBLISHER:** Infection Control and Hospital Epidemiology (ISSN-0899-823X, Canadian GST#129780466) is published exclusively by SLACK Incorporated 12 times a year. Address: 6900 Grove Rd., Thorofare, NJ 08086. Telephone: (856) 848-1000.

**SHEA:** 19 Mantua Rd., Mt. Royal, NJ 08061; telephone, 856-423-0087; fax, 856-423-3420; e-mail address, sheahq@talley.com.

**COPYRIGHT 1999** The Society for Healthcare Epidemiology of America, Inc., and SLACK Incorporated. All rights reserved. No part of this publication may be reproduced without written permission from the publisher. Printed in the USA.

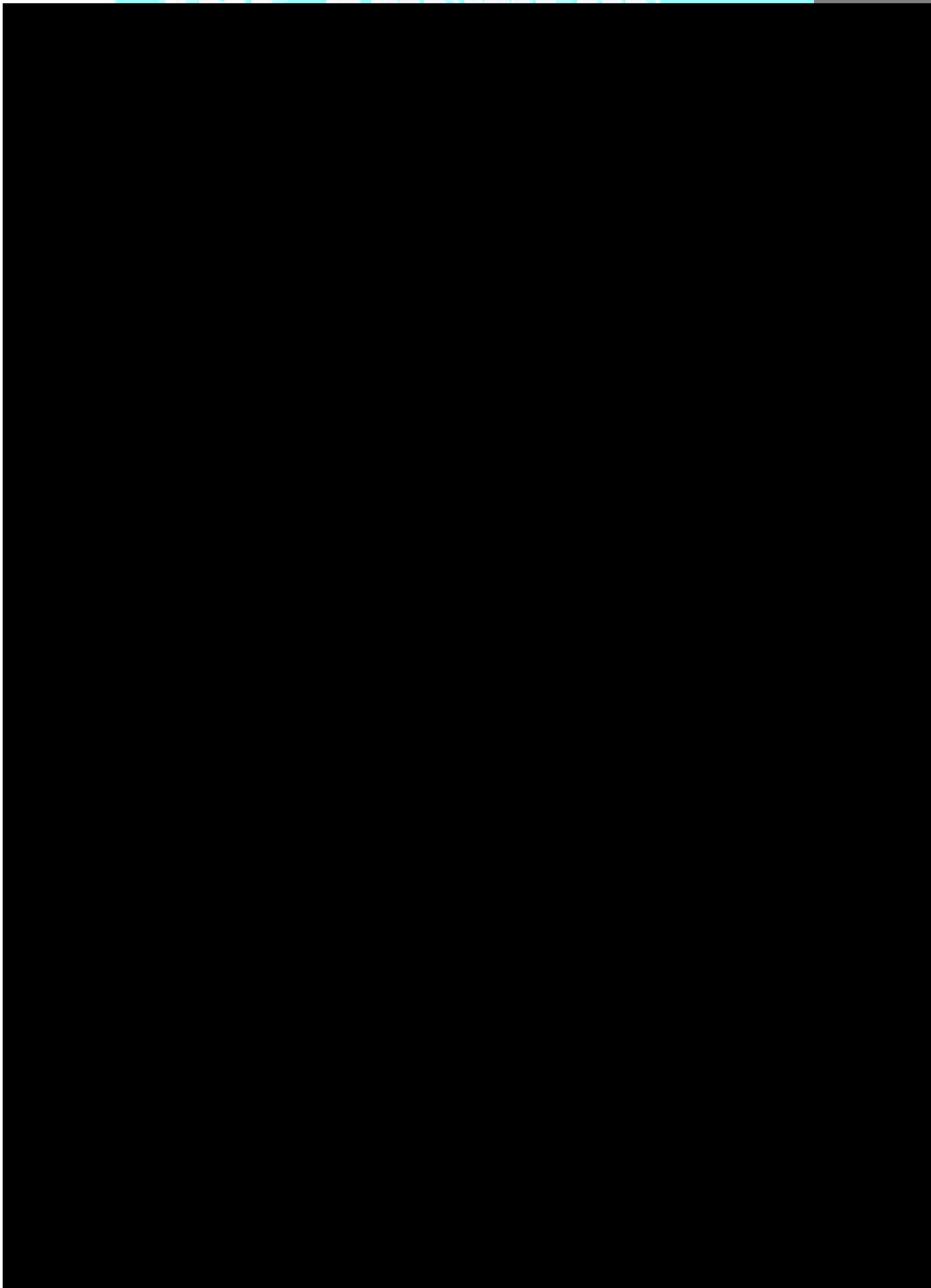
**SUBSCRIPTIONS:** Requests should be addressed to the publisher (except Japan). In Japan, contact Woodbell Incorporated, 4-22-11, Kitakasai, Edogawaku, Tokyo 134, Japan. Subscription rates in the United States and possessions: Individual: One year-\$105.00; Two years-\$143.00; Three years-\$176.00; Institutional: One year-\$128.00; Two years-\$178.00; Three years-\$228.00. Fellows: \$52.50 per year with proof of training status. Canada: \$20.00 additional each year plus 7% for Canadian Goods & Services tax; Overseas surface, \$145.00 each year; Overseas air mail, \$190.00. Single copies of current issues may be obtained for \$15.00, United States and possessions; \$20.00 all other countries.

**INSTRUCTIONS TO AUTHORS:** Authors may submit manuscripts prepared in accordance with the 1997 revision of the "Uniform Requirements for Manuscripts Submitted to Biomedical Journals." The Uniform Requirements has been published in several journals, including *Infect Control Hosp Epidemiol* 1997;18:457-464 and *Ann Intern Med* 1997;126:36-47. A digital version is available on our web site (<http://www.slackinc.com/general/ichehome.htm>). Submit to ICHE Editorial Offices, Vanderbilt University School of Medicine, A-1131 Medical Center North, Nashville, TN 37232-2637, USA. All submissions must be accompanied by copyright form(s) signed by all authors (see January issue or our web site).

**REPRINTS:** All requests to reprint or use material published herein should be addressed to Karen Lambertson, SLACK Incorporated, 6900 Grove Rd., Thorofare, NJ 08086. For reprint orders and prices, contact Karen Lambertson at (856) 848-1000. Authorization to photocopy items for internal or personal use, or the internal or personal use of specific clients, is granted by SLACK Incorporated, provided that the base fee of \$1.00 per copy, plus \$.15 per page is paid directly to Copyright Clearance Center, 27 Congress St., Salem, MA 01970. This consent does not extend to other kinds of copying, such as for general distribution, resale, advertising and promotional purposes, or for creating new collective works.

**CHANGE OF ADDRESS:** Notice should be sent to the publisher 6 weeks in advance of effective date. Include old and new addresses with zip codes. The publisher cannot accept responsibility for undelivered copies. Periodicals postage paid at Thorofare, New Jersey 08086-9447 and at additional mailing offices. POSTMASTER: Send address changes to SLACK Incorporated, 6900 Grove Rd., Thorofare, NJ 08086.

**INFECTION CONTROL AND HOSPITAL EPIDEMIOLOGY** is listed in Index Medicus, Current Contents-Clinical Practice, Hospital Literature Index, Cumulative Index to Nursing & Allied Health Literature, Nursing Abstracts, Laboratory Performance Information Exchange System, and RNdex Top 100.

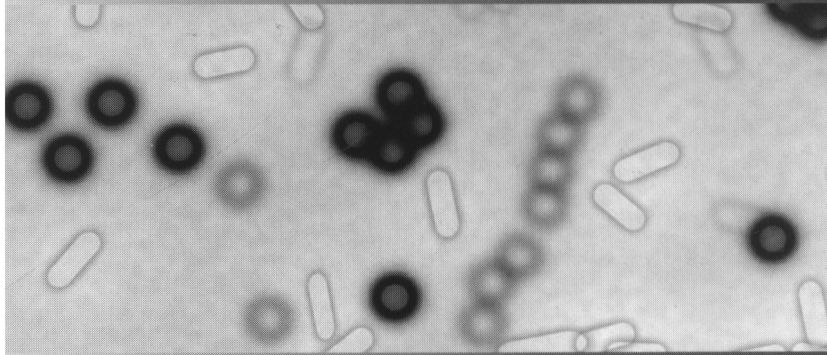




For more information contact:

**4th Decennial Conference on Nosocomial  
and Healthcare-Associated Infections**

20 Montrose Road  
Montrose Professional Park  
Rockville, MD 20852  
Tel. (301) 984-9450  
Fax (301) 984-9441  
Email [info@decennial.org](mailto:info@decennial.org)  
Internet [www.decennial.org](http://www.decennial.org)



4 T H D E C E N N I A L

**International  
Conference on  
Nosocomial and  
Healthcare-Associated  
Infections**

Sponsored by:

**CDC**

CENTERS FOR DISEASE CONTROL  
AND PREVENTION

## SHEA SATELLITE EDUCATION WORKSHOPS

Hyatt Regency - Atlanta, Georgia  
Saturday, March 4, 2000

***Immediately preceding the 4th Decennial International Conference on  
Nosocomial and Healthcare Associated Infections***

- Workshop #1* Bioterrorism: Thinking Globally and Preparing Locally  
*Workshop #2* Immunizations for Health Care Workers: Preventing the Preventable  
*Workshop #3* Methicillin Resistant Staphylococcus Aureus: Prevention, Control, and Treatment Issues  
*Workshop #4* Developing Infection Control and Health Care Epidemiology in the International Setting  
*Workshop #5* Building Data Driven Intervention Teams: A Model for Change in Infection Control  
*Workshop #6* Practical Approaches to Improving Hand Hygiene

The Pre-conference workshops run concurrently. The fee for each workshop is \$150.00. Pre-registration closes on February 4, 2000.

**For more information:** SHEA Meetings Dept., 19 Mantua Road, Mt. Royal, NJ 08061  
**Tel:** 856-423-7222, ext. 350  
**Fax:** 856-423-3420

## **ONLY SOURCE for all 12 Guidelines** **Includes New HIV and HCV Post-Exposure Prophylaxis**

***Twelve Guidelines*** (1984 – Present)

Catheter-Associated Urinary Tract Infections	Surgical Site Infection
Handwashing and Environmental Control	Isolation Precautions in Hospitals
HIV and HBV Exposure-Prone Procedures	Pneumonia
Tuberculosis	Vancomycin Resistance
IV Device-Related Infections	Infection Control in Healthcare Personnel
HIV Postexposure Prophylaxis	Occupational Exposure to Hepatitis C Virus

**and** Index of SHEA Position Papers  
**Foreword by Julia S. Garner, RN, MN**

**CDC Guidelines**  
for Surveillance  
Prevention & Control  
of Nosocomial Infections

**SHEA**

**All In One Single Volume for only**  
**\$99.<sup>00</sup>\***

**Order Today – Call 1-800-552-0076**

International Orders Call 414-884-4532

**Mention this ad for 10% discount!**

**www.ETNAComm.com**

\*Plus shipping & handling.

# Reducing the incidence of nosocomial UTI

