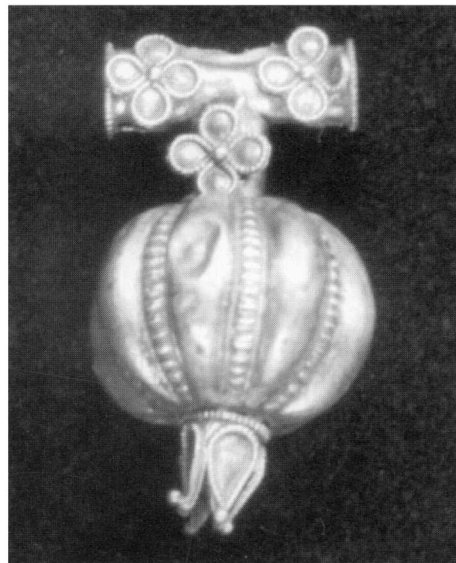


ARCHAEOLOGICAL REPORTS FOR 2002-2003



CONTENTS

ARCHAEOLOGY IN GREECE 2002–2003

James Whitley

ARCHAEOLOGY IN ETRURIA 1995–2002

Margarita Gleba

PUBLISHED BY THE COUNCIL OF THE SOCIETY
FOR THE PROMOTION OF HELLENIC STUDIES
AND
THE COUNCIL OF THE BRITISH SCHOOL AT ATHENS
2003

ABBREVIATIONS

(see also bibliographical abbreviations inside the back cover)

Chronology:

Ar	Archaic	Hel	Hellenistic	E	early
BA	Bronze Age	IA	Iron Age	L	late
Byz	Byzantine	M	Minoan	M	middle
Cl	Classical	Med	Medieval	anc.	ancient
Ch	Christian	Mes	Mesolithic	mod.	modern
Cor	Corinthian	Myc	Mycenaean		
Cyc	Cycladic	Neo	Neolithic		Also used in combination, e.g.:
DA	Dark Age	Or	Orientalizing	ECh	early Christian
Fr	Frankish	Ot	Ottoman	MBA	middle Bronze Age
Geo	Geometric	Pal	Palaeolithic		
Gr	Greek	PH	Prehistoric		
H	Helladic	Rom	Roman		

Compass points: N S E W and combinations thereof.

Measurements: *asl* above sea level *d.* depth *di.* diameter
h. height *l.* length *w.* width

Specialized Ephoreias: EMA Ephoreia of Maritime Antiquities
 EPCA Ephoreia of Prehistoric and Classical Antiquities
 EPS Ephoreia of Palaeoanthropology and Spelaeology
 EBA Ephoreia of Byzantine Antiquities

Institutions: ARF Archaeological Receipts Fund
 ASCSA American School of Classical Studies at Athens
 ASA Archaeological Society of Athens
 BSA British School at Athens
 DAI Deutsche Archäologische Institut
 EFA École Française d'Athènes
 SAIA Scuola Archeologica Italiana di Atene

Other: Ct century
 O. Odos

Greek place-names: In order to standardize the spelling of site-names in *Archaeological Reports*, they will usually be transliterated using British Library conventions as follows:

α/a β/b γ/g (γγ/ng γκ/nk γξ/nx γχ/nch) δ/d ε/e ζ/z η/e θ/th ι/i κ/k λ/l

μ/m (μβ/b μπ/b) ν/n ο/o π/p ρ/r σ,ς/s τ/t υ/u (or y) φ/ph χ/ch ψ/ps ω/o

A few exceptions to this rule are made where anglicized place-names are very well established (e.g. Athens, Corinth, Rhodes, Vergina).

CONTENTS

Archaeology in Greece 2002–2003	1
Introduction	1
Athens	2
National Museums	2
Acropolis Ephoreia	4
Athens Ephoreia	7
Attika and Megarid	8
Western Attika and the Megarid ...	8
Central and southwest Attika	9
Lavreotiki (south Attika: Lavrion, Thorikos and Sounion)	10
The Mesogeia and northwest Attika	11
Islands of the Saronic Gulf, Kythera and Antikythera	13
Korinthia	17
Argolis	22
Arkadia	27
Lakonia	28
Messenia	34
Eleia	35
Achaia	38
Eparchia of Patras	39
Eparchia of Kalavryson	39
Eparchia of Aipaleias	41
Aitolia-Akarnania	41
Kephallenia and Ithaka	42
Boiotia	44
Euboia (with Skyros)	47
Phthiotis and East Lokris	48
Phokis	50
Thessaly (with Northern Sporades) ...	51
Nomos of Magnisia	51
Northern Sporades	53
Nomos Karditsas	53
Nomos of Larisa	54
Nomos of Trikala	56
Epiros (with Lefkada)	56
Nomos of Lefkada	56
Nomos of Preveza	56
Nomos of Arta	57
Nomos of Ioannina	58
Nomos of Thesprotia	58
Kerkyra (Corfu)	59
Western Macedonia	59
Nomos of Pella	59
Nomos of Imathia	60
Nomos of Kozani	61
Nomos of Florina	62
Nomos of Kastoria	62
Central Macedonia	62
Nomos of Thessalonike	62
Nomos Chalkidike	65
Nomos of Kilkis	65
Nomos of Pieria	66
East Macedonia	67
Nomos of Serres	67
Nomos of Drama	67
Nomos of Kavala	68
Thasos	68
Thrace	71
Northeast Aegean Islands	71
Cyclades and Samos	72
Dodekanese and Amorgos	78
Central Crete	78
Eastern Crete	83
Western Crete	85
 Archaeology in Etruria 1995–2002	 89

Cover illustration: gold pendant in the form of a pomegranate from the Archaic temple, Kythnos (Vryokastro) (see pp 75-6). Photograph courtesy of Professor A. Mazarakis Ainian.

This issue of *Archaeological Reports* sees the first 'Archaeology in Greece' by Dr James Whitley, the new Director of the British School at Athens. Since changes of author always bring changes of style, the opportunity has been taken to revise the abbreviations used for chronological periods (listed on the inside front cover) with the object of reducing confusion with other abbreviations; thanks go to Mr Dick Elliott for very helpful suggestions in this regard. A further change is that abbreviations for pottery types have been abandoned, because they were never comprehensive and are not used often enough to make the saving of space a serious consideration. Next, an apology: last year's cover illustration, the 'ring of Minos', kindly supplied by the National Archaeological Museum, Athens, was unfortunately printed in reverse.

Finally, we deeply regret the untimely death of David Turner, who for many years supplied the Byzantine entries for 'Archaeology in Greece'.

Archaeological Reports is published by the Society for the Promotion of Hellenic Studies and the British School at Athens, for their subscribers. It is now also available to subscribers to the *American Journal of Archaeology* (see back cover) and to members of the Society for the Promotion of Byzantine Studies under similar terms. Members of the public can purchase copies from the Secretary, The Society for the Promotion of Hellenic Studies, Senate House, Malet Street, London WC1E 7HU, UK.

'Archaeology in Greece', compiled annually by the Director of the British School at Athens, is the only account of recent archaeological work in Greece published in English. It is usually supplemented each year by reports from other parts of the ancient Greek and Byzantine world: South Italy, Sicily, Sardinia, Cyprus, Asia Minor, the Black Sea and North Africa are covered regularly.

Archaeological Reports is very grateful for the support of the A. G. LEVENTIS FOUNDATION

Editor: Dr Lyn Rodley, The Society for the Promotion of Hellenic Studies,
Senate House, Malet Street, London WC1E 7HU, UK.

© Authors, the Society for the Promotion of Hellenic Studies, and the British School at Athens, 2003
Printed in England by Stephen Austin and Sons Ltd., Hertford.