

MICROSCOPY TODAY

DECEMBER 1998

ISSUE #98-10



Cambridge University Press
1-800-487-2675
www.cambridge.org

With the New LEO VPSE the difference is clear...



Take a look at the two micrographs of pollen on the left. Both were taken in variable pressure mode, one using a backscattered electron detector, the other using LEO's new VPSE (Variable Pressure Secondary Electron) detector. For low atomic number material such as this, the difference is clear—and so is the image taken with the VPSE!

Together with the powerful LEO 438VP, the key benefits include:

- ▼ Imaging and EDS of non-conducting, outgassing or beam sensitive specimens
- ▼ Secondary electron imaging in high and low pressure modes
- ▼ Operates at low kV, for true surface imaging in VP mode
- ▼ Examine hydrated and wet specimens with the optional peltier stage

LEO Electron Microscopy Customer Response Centres:

UK:
Telephone (44) 1223 414166
Fax (44) 1223 412776
E-mail info@leo-em.co.uk

USA:
Telephone (1) 914 747 7700
Fax (1) 914 881 7443
E-mail 70142.504@compuserve.com

Website: www.leo-em.co.uk

Plus a worldwide network of dealers

LEO
The power to resolve



Wishing you the
Merriest of Christmases
And the
Happiest of New Years

Front Page Image

This 5 μ m image shows one of the worlds smallest Christmas trees - created by nanodeposition of copper on gold using an electrochemical AFM.

Image courtesy of Ch. Klinke and Th. Schimmel, University of Karlsruhe, Germany and ThermoMicroscopes (formally Park Scientific and TopoMetrix), Sunnyvale, California.

MICROSCOPY TODAY

The objective of the publication, perhaps unlike many others, is to present articles and other material of interest and value to the working microscopist. With contributions from our readership, we attempt to cover all aspects of microscopy. The publication is mailed, ten times a year, at no charge to some

8,000 microscopists in the United States - all of which have requested subscriptions. Due to the current relatively low number of international readers, and resulting very high postage costs, we are forced to charge the following for international subscriptions (10 issues/year):

Canada, Mexico, Latin and South America: \$40 for one year, \$70 for two years

Other International: \$55 for one year, \$95 for two years

Payment may be made by check, credit card or company purchase order.

MICROSCOPY TODAY

PO Box 620122, Middleton, WI 53562

Tel.: (608)836-1970 - Fax: (608)836-1969 - eMail: MicroToday@aol.com - <http://www.microscopy-today.com>

Copyright in 1998 by Today Enterprises. All rights reserved.

Keeping a good image around the lab just got a lot easier. Quartz PCI.

With the Windows®-based Quartz PCI™ system, you can capture and manage high-resolution digital images from just about any image-producing device. And do so with a single—and familiar—family of software that lets you smoothly work with SEMs, STEMs, TEMs, light microscopes, video sources, TWAIN devices and CD SEMs. You end continuous learning of new software. Easily network diverse instruments. And conveniently enter all types of images into one database.

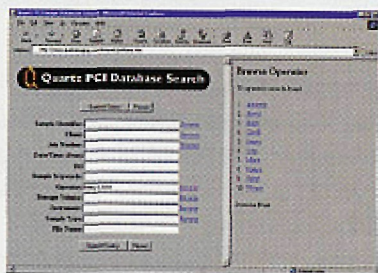
Further, after acquiring an image, PCI's processing and display capabilities let you do just about anything you want with it—from annotating, zooming, smoothing and sharpening it to making gamma adjustments and constructing anaglyph stereo images. And you're free to add your own custom functions as well.

Now, think about your database. PCI's scalable family of database solutions ensures your images—plus

related documents, custom fields and tables—become

part of a powerful database that provides data when, where, and in the form needed. ODBC compliance ensures compatibility with third-party tools like Microsoft® Access™. And PCI's Workgroup Database, for facilities with up to 25 users, is upgradable to our Enterprise Database which—based on either Oracle® or Microsoft® SQL Server™—supports thousands. With our Intranet Image Server, you can perform queries and retrieve images via standard Web browsers. And, for off-line storage, there's built-in support for removable media such as CD-ROMs or magneto-optical disks.

So, if easily acquiring, analyzing, manipulating, annotating, transmitting, archiving and retrieving high-resolution images from various sources is in your future, you'll want Quartz PCI details in your hands. You can arrange that easily, too. Visit the Nissei Sangyo Web site for a demonstration, or let us hear from you by phone, FAX or E-mail.



The PCI Intranet Image Server lets you use your Web browser to search for images.

NSA

Nissei Sangyo America, Ltd.

755 Ravendale Drive
Mountain View, CA 94043
(800) 227-8877

E-mail: sidsales@nissei.com
www.nissei.com

25 West Watkins Mill Road
Gaithersburg, MD 20878
(800) 638-4087