


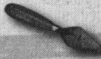
FROM PREHISTORY TO THE PRESENT

Learn about the human past from prehistory to the present day. Develop new skills and polish others.


Whatever your experience or interests, there has never been a better time to join one of the top archaeology departments in the country.




Achieved top ratings for teaching in recent national surveys (QAA and NSS).



Identified as one of the top ten research institutions in Britain (RAE 2008).



Access to the wealth of resources and professional expertise that the city of York has to offer.



CPD, short courses and part time options for those who have to balance their studies with other commitments.

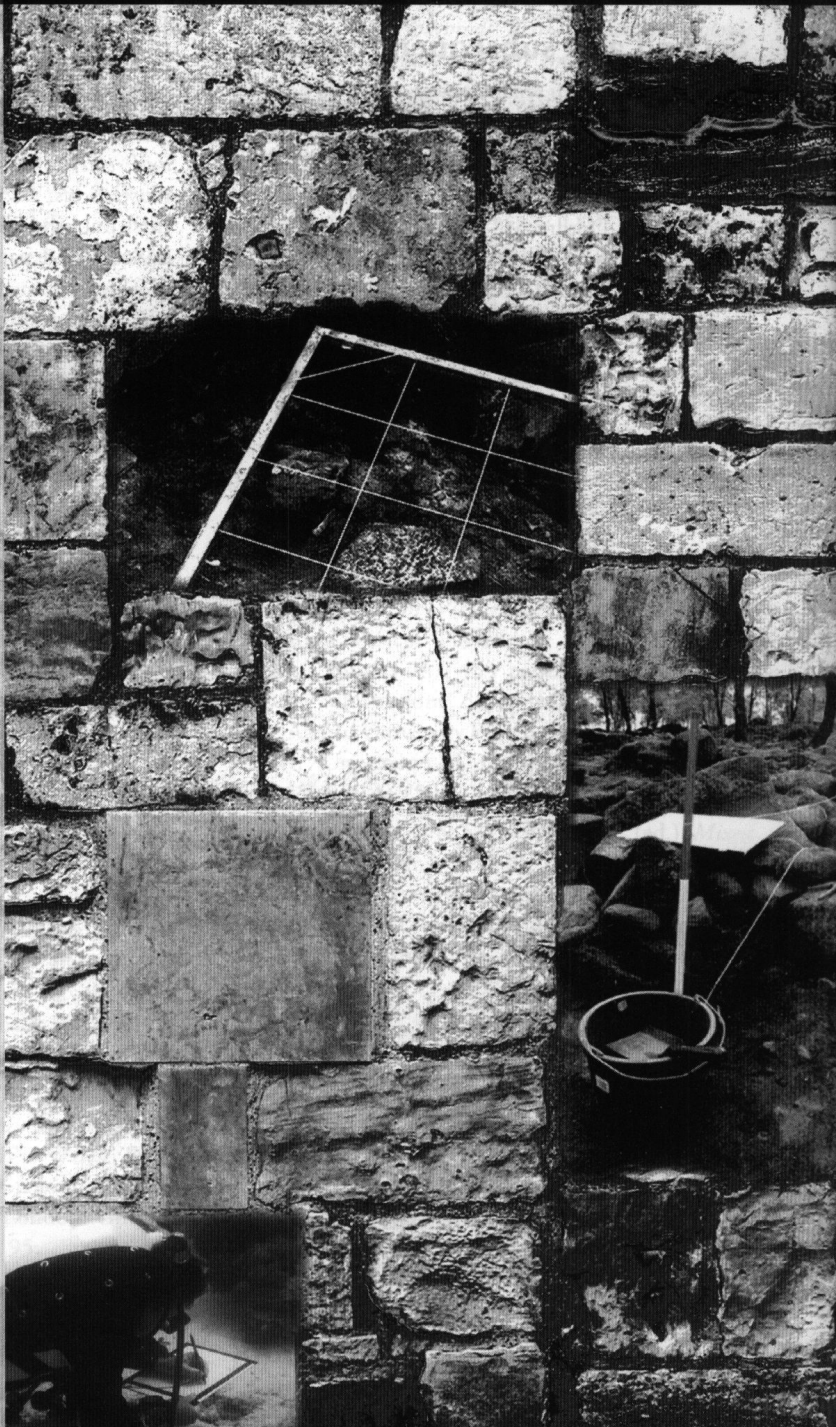
BA/BSc

Archaeology BA and BSc
Bioarchaeology BSc
Historical Archaeology BA

MA/MSc

Archaeological Information Systems
Archaeology of Buildings
Bioarchaeology
Coastal and Marine Archaeology
Conservation Studies (Historic Buildings)
Cultural Heritage Management
Digital Heritage
Early Prehistory
Field Archaeology
Historical Archaeology
Historic Landscape Studies
Landscape Archaeology
Medieval Archaeology
Mesolithic Studies
Zooarchaeology

ARCHAEOLOGY AT THE UNIVERSITY *of York*



For further details, see our website or contact:

Department of Archaeology
University of York
King's Manor
York YO1 7EP
UK

www.york.ac.uk/archaeology
archaeology@york.ac.uk

Tel: +44 (0) 1904 433903
+44 (0) 1904 433963

POSTGRADUATE
STUDENTSHIPS
& BURSARIES
AVAILABLE

Notes for contributors

Antiquity aims to report new archaeological research, method and issues of international significance in plain language to a broad academic and professional readership. The journal is published quarterly in March, June, September and December.

Submissions are invited in the following categories: Research (max. 5000 words), Method and Debate (each max. 3000 words). Word limits include all text, tables, references and figure captions.

Antiquity uses a secure and confidential online submission and peer-review system. Detailed help on how to submit is available both prior to submission and throughout the submission process. To submit a manuscript please visit our website at <http://antiquity.ac.uk/contribute/contribute.html> where you will find a link to the submission site and full **Instructions for authors**.

Wherever possible manuscripts should be submitted as a single Adobe PDF document containing all text, tables and figures but excluding any covering letter. If you cannot submit your manuscript as a PDF, you may submit separate text and graphics files. If your paper is accepted for publication, you will be asked to provide separate high-resolution, publication-quality graphics, in TIFF or EPS format. It is therefore best for the initial submission to create any graphics using applications that are capable of preparing acceptable TIFF or EPS formats. Resolutions must be 300dpi or higher and image dimensions should be either half-page width (65mm) or full-page width (135mm). The maximum acceptable height is 185mm. Maps and plans must include an accurate scale and north point.

As part of the submission process authors will be required to confirm that the substance of

the content presented has not been published previously and is not currently being considered for publication elsewhere.

We prefer to receive submissions in English but can consider submissions in French, German, Italian and Spanish where submitting in English is not possible. (Accepted papers are translated free of charge and published in English.)

All submissions are considered by the Editor in the first instance. Suitable papers are peer-reviewed by a minimum of two experts. If you are unsure whether a paper is suitable for *Antiquity*, please contact the Editor prior to submission (editor@antiquity.ac.uk).

Project Gallery (<http://antiquity.ac.uk/projgall/>)

The Project Gallery (max. 1000 words + 6 figures) is part of *Antiquity's* online Bulletin and is intended to showcase projects and ideas of international status. The Project Gallery also welcomes contributions to archaeological historiography and responses to published articles. Please note that the Editor will not accept reports about local or regional surveys, sites or artefacts unless of wider significance; articles of local and regional interest should be properly directed to the national records and journals of the country concerned. Project Gallery articles are not normally peer-reviewed but the Editor may seek external advice.

Books for review

We welcome books for review on archaeology and associated research. Please send books to the Reviews Editor, Dr Madeleine Hummler, at *Antiquity*, King's Manor, York YO1 7EP, UK (reviews@antiquity.ac.uk).

ANTIQUITY 2012 Subscription Order Form

Contact Details

Name:

Delivery Address (include post/zip code and country)

.....

.....

Telephone: Fax

Email:

- Premium:** printed and online version of the journal AND access to the electronic archive of previous issues back to 1927
- Combined:** printed and current online versions of the journal
- Print only:** printed version of the journal
- Online only:** online current version of the journal

Journal Subscription

2012	Institutional					Individual				
	Tick box	UK £	VAT (see note)	US \$	€	Tick box	UK £	VAT (see note)	US \$	€
Premium	<input type="checkbox"/>	340	(+£48.32 VAT)	573	461	<input type="checkbox"/>	77	(+£8.24 VAT)	143	111
Combined	<input type="checkbox"/>	191	(+£18.52 VAT)	320	254	<input type="checkbox"/>	61	(+£5.04 VAT)	113	89
Print only	<input type="checkbox"/>	171	n/a	286	226	<input type="checkbox"/>	54	n/a	102	84
Online only	<input type="checkbox"/>	161	(+£32.20 VAT)	272	220	<input type="checkbox"/>	38	(+£7.60 VAT)	72	57
<i>For airmail delivery add</i>	<input type="checkbox"/>	25.65				<input type="checkbox"/>	25.65			

Note: VAT will be due on the online element of subscriptions from the UK and from non-registered subscribers elsewhere in the EU.

EU customers should provide their VAT number:

Method of Payment

- One off payment for 2012 only by Credit Card** Card: Visa / MasterCard / Eurocard / Switch / Connect
 Card No:
 Valid from: Expiry Date Issue No:
 Card holder's name (as it appears on card)
 Card holder's address (if different to delivery)
 Signature Date
- Cheque or postal order** Please make cheque payable to **Portland Customer Services**.
- Bank Transfer** Make payment to **Portland Customer Services**, NatWest Bank Plc, 25 High Street, Colchester CO1 1DG, UK. **Account # 01863630 — Sort Code: 60-06-06**
 Please include full name and reason for transfer i.e. Antiquity subscription and supply us with details of your transfer, date of transaction, amount and the bank from which you are transferring.
- Direct Debit** Please send me a direct debit mandate form
- Proforma Invoice** Please send me a proforma invoice

Discounts may be available for students and institutions in developing countries. Please apply to the Editor for details.

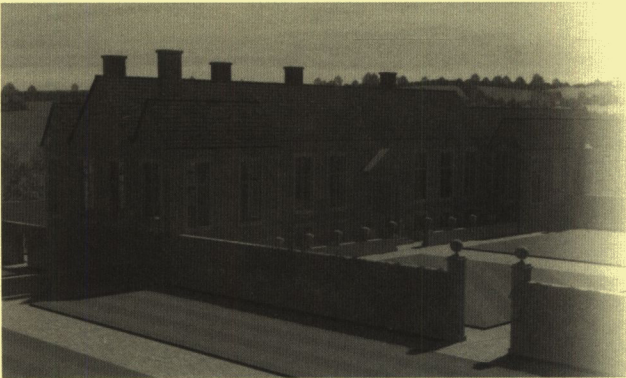
Please send form and payment to:

Portland Customer Services, Commerce Way, Colchester CO2 8HP, UK
Tel: +44 (0)1206 796351 Fax: +44(0)1206 799331
email: sales@portland-services.com www.portland-services.com

<http://www.heritagetechnology.co.uk/>

Heritage Technology Ltd

Heritage Sector IT Specialists



3D Visualisation

- ✔ Digital visualisation of objects, buildings & landscapes
- ✔ Photo-realistic, high quality historical reconstructions

- ✔ Services for visitor attractions, academia & commercial projects
- ✔ Individually tailored to fit **all** requirements & budgets
- ✔ Services also include web design & digital archaeological support



Heritage Technology specialises in creating highly realistic 3D visualisations from historical & archaeological data. Digital reconstruction is a proven technique in both academic & commercial archaeology for portraying often complex spatial & temporal data in an accessible and engaging way. Explore the possibilities at:

<http://www.heritagetechnology.co.uk>

Archaeopress

Gordon House, 276 Banbury Road, Oxford OX2 7ED England Tel/Fax: +44 1865 311914
e-mail: bar@archaeopress.com http://www.archaeopress.com

LRFW 1. Late Roman Fine Wares

Solving problems of typology and chronology

A review of the evidence, debate and new contexts

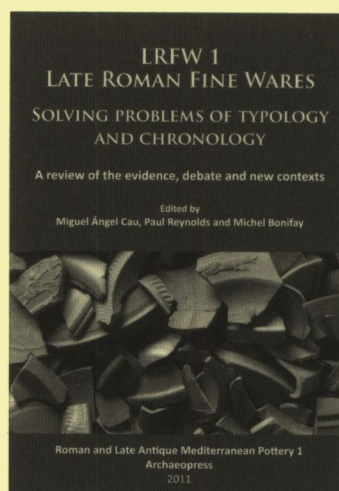
Roman and Late Antique Mediterranean Pottery 1

edited by Miguel Ángel Cau, Paul Reynolds
and Michel Bonifay (2011)

xii+251 pages; illustrated throughout. Contributions in English, French and Spanish
ISBN 978-1-905739-46-2 £30.00 pb

This is the first volume of the new Archaeopress series, *Roman and Late Antique Mediterranean Pottery (RLAMP)* which seeks to gather innovative individual or collective research on the many dimensions of pottery studies. It is intended that these studies will cover the following range: pure typological and chronological essays and diachronic approaches to particular classes, the complete publication of ceramic deposits, pottery deposit sequences, archaeometry of ancient ceramics, methodological proposals, studies of the economy based on pottery evidence, also ethnoarchaeological ceramic research that may contribute to the understanding of the production, distribution and consumption of pottery in the Mediterranean basin.

This first volume offers a variety of contributions focused on several aspects of late Roman fine wares in the Mediterranean by the scholars present in the Barcelona workshop or by other scholars, including those who participated in the preparatory meetings held in Aix-en-Provence and Barcelona. A first introductory section presents a brief summary of the development and results of the ICREA/ESF Workshop and the main ideas under discussion. The papers deal with main pottery contexts found throughout the Mediterranean, which are important for dating.



WreckProtect

Decay and protection of archaeological wooden shipwrecks

edited by Charlotte Gjelstrup Björdal and David Gregory
with assistance from Athena Trakadas (2011)

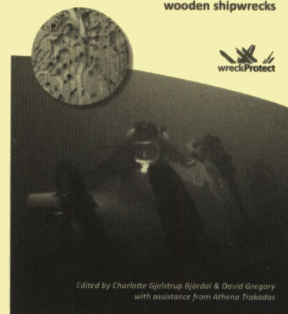
i-viii, 154 pages illustrated throughout in colour
ISBN 978-1-905739-48-6 £19.95 hb

This book stems from the results of an interdisciplinary European Union supported research project, WreckProtect, which investigated the decay and preservation of wooden shipwrecks under water in the Baltic Sea. It is not limited to the decay of wrecks in the Baltic alone and is aimed at all stakeholders with a vested interest in the protection of the underwater cultural heritage including marine archaeologists, conservators, engineers, and students in related fields at universities around the world.

The book includes chapters on the anatomy and structure of wood and the physical and biological decay of shipwrecks under water. Well-known shipwrecks in the Baltic Sea are introduced, focusing upon their state of preservation and are compared to finds typically found in the North Sea and the Mediterranean. Microbial decay processes and their identification in both sediments and the water column are also discussed and related to other natural decay processes, as well as human impacts. Finally, a summary of available methods for the *in-situ* protection of wrecks are evaluated and a cost-benefit analyses of *in-situ* preservation versus conventional raising and conservation are given.

WreckProtect

Decay and protection
of archaeological
wooden shipwrecks



B.A.R.

British Archaeological Reports

For all Archaeopress BAR titles with short summaries go to www.archaeopress.com



Sign up to our monthly ALERTS SERVICE via our above website homepage



BAR titles can be ordered from Hadrian Books, 122 Banbury Road, Oxford OX2 7BP, UK
www.hadrianbooks.co.uk