



## Research Article

# Foraging and farming: archaeobotanical and zooarchaeological evidence for Neolithic exchange on the Tibetan Plateau

Lele Ren<sup>1</sup>, Guanghui Dong<sup>2,3,\*</sup>, Fengwen Liu<sup>2</sup>, Jade d'Alpoim-Guedes<sup>4,\*</sup>,  
Rowan K. Flad<sup>5</sup>, Minmin Ma<sup>2</sup>, Haiming Li<sup>6</sup>, Yishi Yang<sup>7</sup>, Yujia Liu<sup>2</sup>,  
Dongju Zhang<sup>2</sup>, Guolin Li<sup>8</sup>, Jiyuan Li<sup>8</sup> & Fahu Chen<sup>2,3</sup>

<sup>1</sup> History and Culture School, Lanzhou University, P.R. China

<sup>2</sup> Key Laboratory of West China's Environmental System (Ministry of Education), P.R. China

<sup>3</sup> CAS Center for Excellence in Tibetan Plateau Earth Sciences and Key Laboratory of Alpine Ecology, Institute of Tibetan Plateau Research (ITPCAS), Chinese Academy of Sciences, P.R. China.

<sup>4</sup> Scripps Institution of Oceanography, Department of Anthropology, University of California San Diego, USA

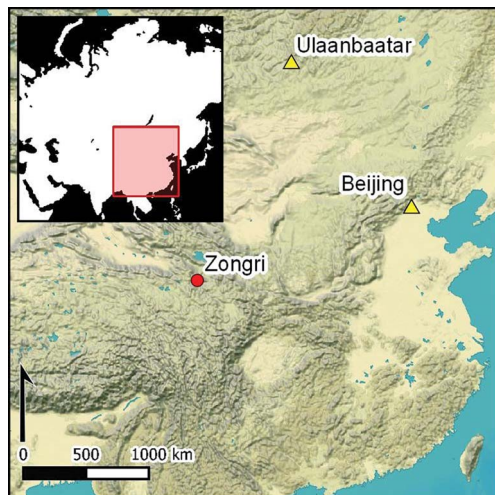
<sup>5</sup> Department of Anthropology, Harvard University, USA

<sup>6</sup> Institution of Chinese Agricultural Civilization, Nanjing Agricultural University, P.R. China

<sup>7</sup> Gansu Province Institute of Cultural Relics and Archaeological Research, Lanzhou, P.R. China

<sup>8</sup> Qinghai Provincial Institute of Cultural Relics and Archaeology, Xining, China

\* Authors for correspondence: ✉ [jguedes@ucsd.edu](mailto:jguedes@ucsd.edu) & [ghdong@lzu.edu.cn](mailto:ghdong@lzu.edu.cn)



Archaeological research has documented the migration of Neolithic farmers onto the Tibetan Plateau by 4000 BC. How these incoming groups interacted, if at all, with local indigenous foragers, however, remains unclear. New archaeobotanical and zooarchaeological data from the Zongri site in the north-eastern Tibetan Plateau suggest that local foragers continued to hunt but supplemented their diet with agricultural products in the form of millet. The authors propose that, rather than being grown locally, this millet was acquired via exchange with farmers. This article highlights how indigenous foragers engaged in complex patterns of material and cultural exchange through encounters with newly arrived farmers.

Keywords: Tibetan Plateau, Late Neolithic, archaeobotany, zooarchaeology, forager-farmers, exchange

Received: 22 March 2019; Revised: 7 August 2019; Accepted: 14 August 2019

© Antiquity Publications Ltd, 2020. This is an Open Access article, distributed under the terms of the Creative Commons Attribution licence (<http://creativecommons.org/licenses/by/4.0/>), which permits unrestricted re-use, distribution, and reproduction in any medium, provided the original work is properly cited.

## Introduction

During the Early to Mid Holocene, agricultural intensification promoted the dispersal of farming groups across the Old World (Bellwood & Renfrew 2002), extending their territories to areas previously only occupied by foragers. The nature of the ensuing forager and farmer interactions in East Asia, however, has rarely been examined critically. Relationships between indigenous forager populations and incoming farmers is sometimes conceived as the latter replacing the former (Ammerman & Cavalli-Sforza 1973; Bellwood & Renfrew 2002), or as populations co-existing for extended periods, with either foragers adopting farming practices or exchanging hunting products for domesticated animals or crops (Zvelebil 1996; Krause-Kyora *et al.* 2013; Mittnik *et al.* 2018).

In north-western China, sites of the Neolithic Majiayao Culture (fourth and third millennia BC), characterised by painted pottery and millet-based farming, appear to provide clear evidence for the expansion of farmers from central China. By the fourth millennium BC, such sites seem to have spread to the eastern margins of the Tibetan Plateau (Dong *et al.* 2013). While some scholars argue that agriculture spread to the margins of the Tibetan Plateau through population movement (Li 2009; Chen *et al.* 2015), others contend that sites once considered to have been occupied by farmers, such as Karuo in Chamdo, may have been inhabited by foragers who obtained grain through exchange with farmers (d'Alpoim Guedes *et al.* 2016; d'Alpoim Guedes 2018). Fifty-one sites of the Zongri Culture (3650–2050 cal BC) are known in the eastern Gonghe Basin of the north-eastern Tibetan Plateau, all located above 2600m asl (Chen *et al.* 1998) (Figure 1). These sites have yielded tantalising evidence for indigenous foragers who were not replaced by incoming farmer groups and who were not passive recipients of farming practices. Indeed, scholars have argued that although farmers migrated to the Zongri cultural area, they did not replace the local foragers, and the two populations instead participated in complex interactions (Chen *et al.* 1998; Qinghaisheng Wenwu Guanlichu & Hainanzhou Minzu Bowuguan 1998; Chen 2006; Hung *et al.* 2012, 2014).

The Zongri type-site, located in Tongde County, Hainan Tibetan Autonomous Prefecture, Qinghai Province, was first investigated in 1982 by the Qinghai Provincial Institute of Cultural Relics and Archaeology. Initial investigations yielded two burials and a pottery kiln (Gao 1985). Between 1994 and 1996, the Qinghai Provincial Bureau of Cultural Relics carried out further excavations at the site. These uncovered a total of 341 tombs, 18 ash pits and 18 sacrificial pits, and over 30 000 artefacts, including ceramic sherds, lithics, animal remains and bone objects (Chen 2006). Previous research suggests that the site was occupied more or less continuously for 1600 years (Chen *et al.* 1998). Two key pottery types were recovered at Zongri:

- 1) Small ceramic vessels consistent with those found at sites in the Majiayao heartland in the upper Yellow River region. These are wheel-turned, highly burnished and decorated with painted whorl patterns. Previous chemical analysis confirms that these vessels were not manufactured at Zongri, but were instead imported from lower-lying areas to the east (Hong *et al.* 2011).

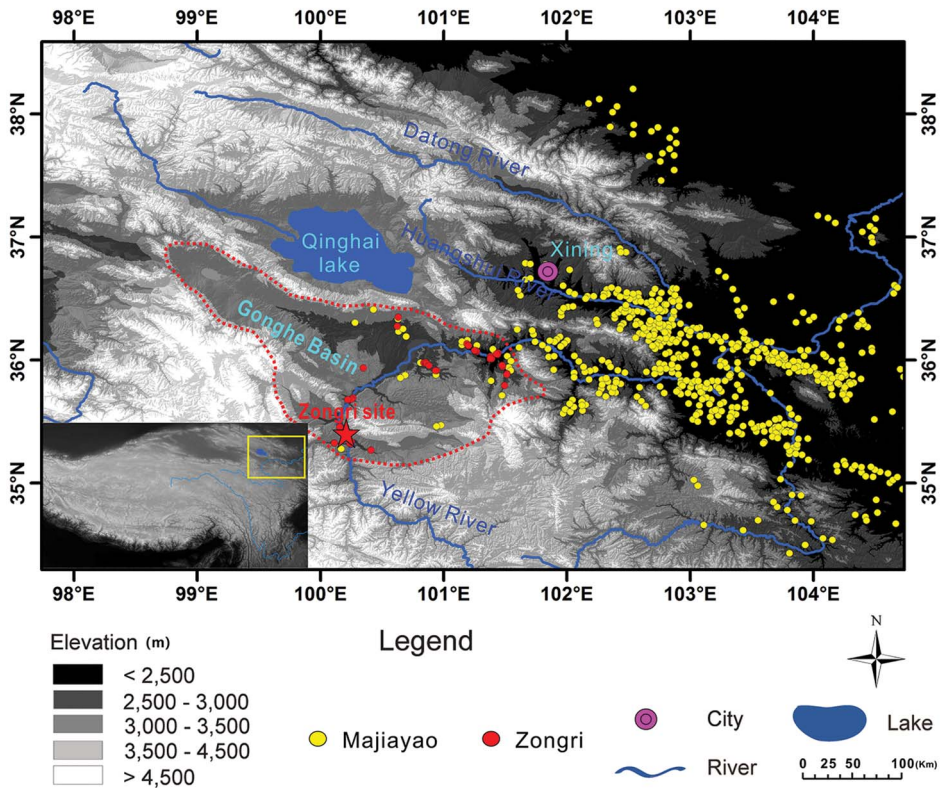


Figure 1. Location of the Zongri type-site and distribution of Zongri and Majiayao Culture sites on the north-eastern Tibetan Plateau. The range within the red dotted line refers to the Gonghe Basin. Digital elevation model data were retrieved from <http://www.gscloud.cn/> (figure by Lele Ren).

- 2) A second, local tradition of pottery appears at Zongri shortly after the arrival of Majiayao pottery. Although this ceramic type imitates some aspects of the Majiayao style, the vessels are painted with zig-zags, and appear to have been hand-thrown and poorly fired. Hung *et al.* (2012, 2014) have argued that this pottery was produced by foragers wishing to imitate Majiayao pottery.

The burials at Zongri include intriguing evidence for complex forager-farmer interactions. While Majiayao Culture graves primarily contained inhumations in a supine position within earthen pits, the earliest inhumations at Zongri were in a prone position within stone cists or wooden coffins (Chen 2006; Hung *et al.* 2014). During the site's middle phases, supine burials containing pottery imported from the Majiayao heartland appear at the site, alongside burials that continue the practice of prone inhumation. Towards the end of occupation, supine burials disappear, to be replaced by prone burials. Previous scholarship has argued

that the prone burials are those of indigenous foragers and that the supine burials represent the incoming farmers (Hung *et al.* 2014). The practice of supine burial, however, was present at Zongri for only a brief period (Hung *et al.* 2014).

Some scholars argue that the Zongri foragers may have adopted both agricultural practices and material culture from the farmers (Cui 2006; An & Chen 2010). Indeed, a decrease in nitrogen and carbon isotope values in human bones at Zongri suggests less reliance on animal products and an increased consumption of C<sub>4</sub> foods, presumably millet, over time (Cui 2006). The question remains as to whether foragers at this site began to cultivate millets themselves, or whether millet was acquired via exchange with individuals or groups inhabiting lower elevations.

In order to understand better how Zongri forager groups adapted their high-altitude subsistence strategies, and how they interacted with groups practising plant cultivation in neighbouring areas, we conducted a small excavation in 2015 at the Zongri type-site (Figure 1), followed by a systematic programme to analyse plant and animal remains and acquire radiocarbon dates. Our results show that Zongri Culture foragers consumed crops, probably millet, while continuing to hunt wild animals. We use additional data to argue that the millet found in the Zongri cultural area was not grown locally, but was introduced through exchange with farmers living in neighbouring, lower-lying areas.

## Materials and methods

In 2015, we excavated a small trench measuring 4 × 4m at the Zongri type-site, identifying three distinct cultural layers (Figure 2). All artefacts were consistent with the late Zongri Culture (*c.* 2700–2100 cal. BC). Systematic archaeobotanical and zooarchaeological sampling was conducted for all features and layers encountered in the trench: 92 soil samples were taken (approximately 1778 litres), which contained 4150 charred plant seeds and 3132 fragments of animal bone. We argue that, although derived from a limited area of investigation, our data are sufficient to illustrate the subsistence strategies employed by the site's inhabitants. Procedures for the flotation and identification of charred seeds, the collection and identification of faunal remains, and the selection of samples for radiocarbon dating are outlined in the online supplementary material (OSM).

## Results

### *Radiocarbon dating*

Ten charred millet seeds were selected from three cultural layers and two ash pits at the Zongri site for AMS radiocarbon dating. As shown in Table 1 and Figure 2, ranges from 2683±180 to 2090±105 cal BC (at 95.4% confidence) are documented. The non-sequential nature of the dates indicates the vertical migration of archaeobotanical material over the 600-year span of occupation. We therefore concentrated on the subsistence strategy of the Zongri group over the entire period of occupation, rather than on minor differences between the three cultural layers.

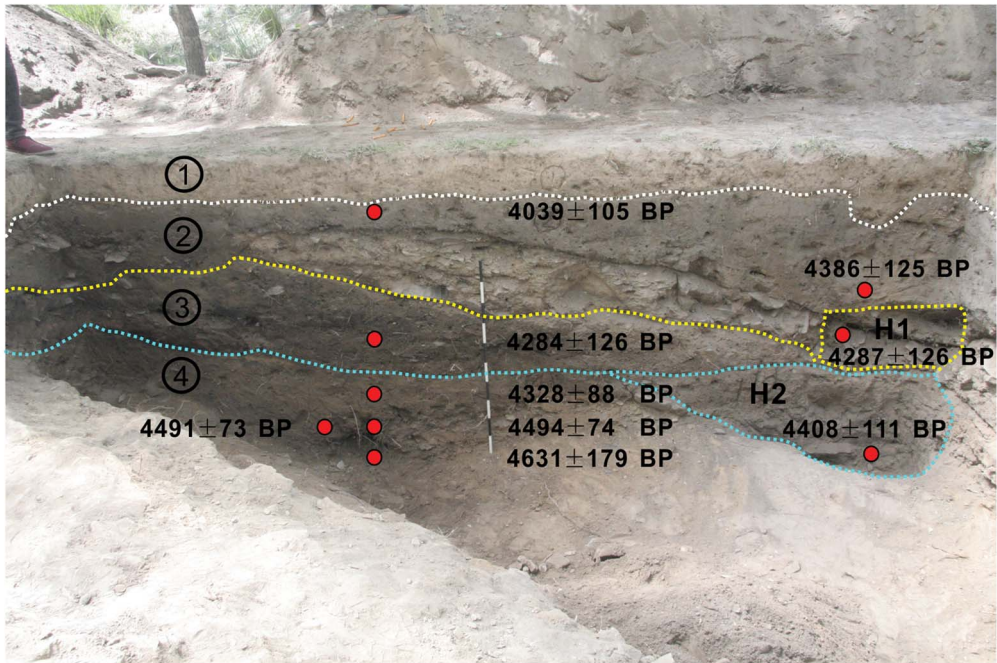


Figure 2. Chronology of the Zongri type-site, and stratigraphic locations of the radiocarbon samples. The white line separates the first layer (L1) from the second layer (L2); the yellow line marks the boundary between L2 and the third layer (L3) (ash pit 1 (H1) belongs to L2); the blue line separates L3 from the fourth layer (L4) (ash pit 2 (H2) belongs to L3) (figure by Lele Ren).

### Plant macrofossils

A total of 4150 charred plant seeds were identified and assigned to 11 plant taxa comprising two domesticates and nine taxa that may have been either weeds or wild plants used for economic purposes (Table S1; see Figures 3–4). Broomcorn millet (*Panicum miliaceum*) and foxtail millet (*Setaria italica*) are in the majority, with 3374 (81.3 per cent) and 635 seeds (15.3 per cent) respectively. One-hundred and forty weed seeds were also identified, including 55 lambsquarters (*Chenopodium album*) seeds, 51 saltbush (*Atriplex* spp.), 15 belvedere (*Kochia scoparia*), one medick (*Medicago* spp.), one lotus (*Lotus* spp.), ten green bristlegrass (*Setaria viridis*), three wild panic grass (*Panicum miliaceum* ssp. *rudiverale*), three sea-buckthorn (*Hippophae rhamnoides*) and one sedge (*Carex* spp.). Lambsquarters and saltbush constitute roughly one per cent of the assemblage, the remaining taxa less than one per cent.

### Faunal remains from the Zongri site

Our trench yielded 3132 fragments of animal bone, 880 of which could be identified to species or genus level, with the exception of fish and bird bones (Table 2). The number of faunal remains is defined as the number of identified specimens (NISP); the minimum number of

Table 1. Calibrated radiocarbon dates of charred crop grains from the excavation of the Zongri site in 2015. The calibration was performed using OxCal v4.3 (Bronk Ramsey & Lee 2013).

Lab. no.	Provenance	Dating method	Dating material	Radiocarbon age (BP)	Calibrated age (cal BC)	
					1σ (68.2%)	2σ (95.4%)
LZU-15126	L2	AMS	Foxtail millet	3700±25	2087±49	2090±105
Beta-467768	L2-4	AMS	Broomcorn millet	3940±30	2418±69	2437±128
Beta-467769	H1(L2)	AMS	Broomcorn millet	3870±30	2373±80	2338±127
LZU-15125	L3	AMS	Foxtail millet	3910±20	2407±58	2390±80
Beta-467770	H2(L3)	AMS	Broomcorn millet	3960±30	2512±54	2459±112
Beta-467771	L3	AMS	Broomcorn millet	3860±30	2370±84	2335±125
LZU-15124	L4	AMS	Foxtail millet	4020±30	2531±41	2545±74
Beta-467772	L4-2	AMS	Broomcorn millet	3890±30	2401±56	2379±88
Beta-467773	L4	AMS	Broomcorn millet	4010±30	2528±41	2542±74
Beta-467774	L4-5	AMS	Broomcorn millet	4100±30	2709±130	2683±180

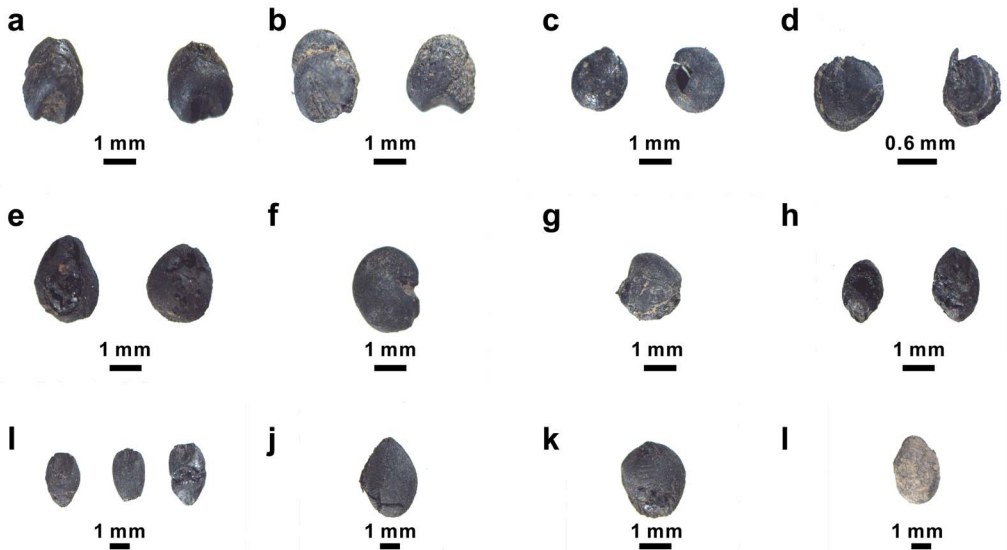


Figure 3. Charred plant seeds from the Zongri site: a) foxtail millet (*Setaria italica*); b) broomcorn millet (*Panicum miliaceum*); c) lambsquarters (*Chenopodium album*); d) saltbush (*Atriplex spp.*); e) belvedere (*Kochia scoparia*); f) medick (*Medicago spp.*); g) lotus (*Lotus spp.*); h) green bristlegrass (*Setaria viridis*); i) wild panic grass (*Panicum miliaceum ssp. ruderales*); j) sea-buckthorn (*Hippophae rhamnoides*); k) edge (*Carex spp.*); l) unknown (figure by Lele Ren).

individuals (MNI) of each species can be estimated based on their NISP. Both the NISP and MNI data for animal remains from the Zongri site show that wild animals outnumber domesticated species, with 763 fragments (98.1 per cent by NISP) vs 17 (1.9 per cent by MNI) and 63 fragments (91.3 per cent by NISP) vs 6 (5.8 per cent by MNI) (Table 2; see Figures 5–6). Domesticated species include dog (*Canis familiaris*) and probably cattle (*Bos sp.*), with a

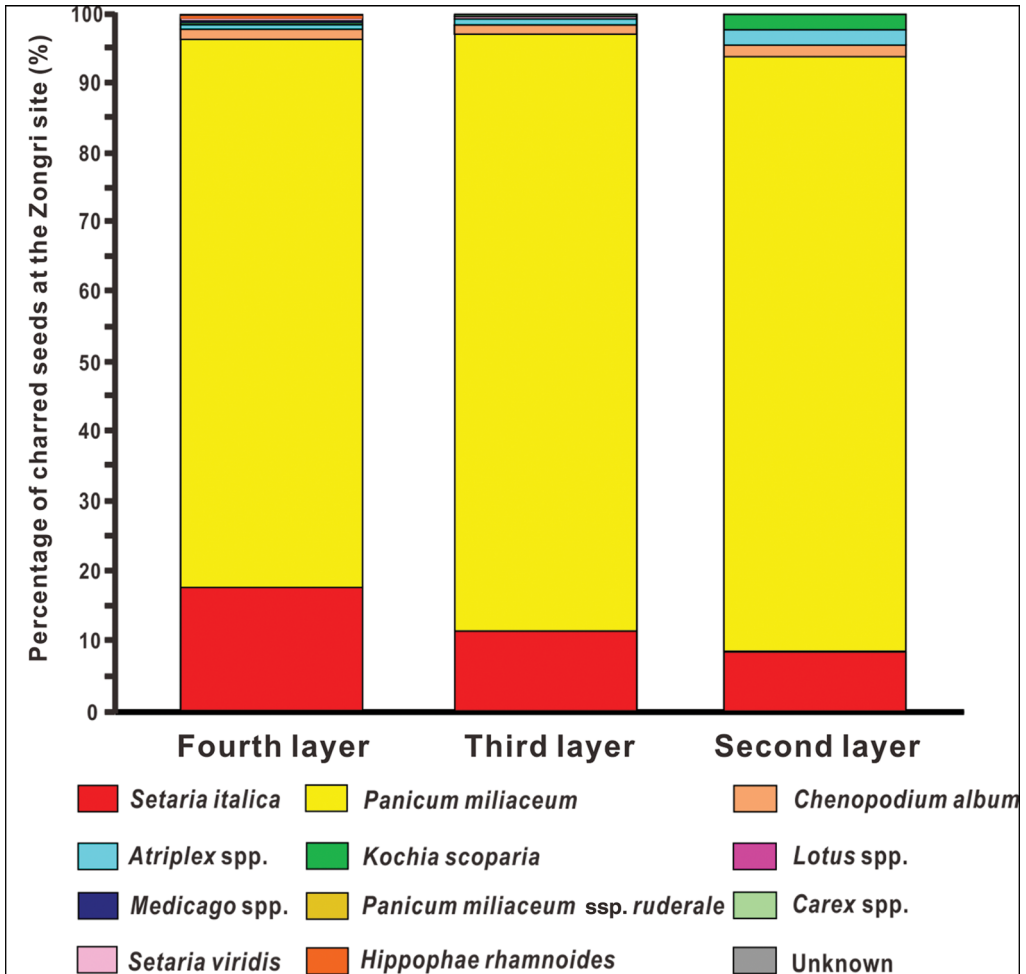


Figure 4. Percentage of plant seed remains in samples from the Zongri type-site (figure by Lele Ren).

NISP of twelve and five and an MNI of four and two. Cervidae account for 27.2 per cent (NISP = 239) of the faunal assemblage, with at least 22 individuals represented. Together, Caprinae and Antilopinae make up 53.2 per cent (NISP = 468) of the assemblage, of which at least six were Mongolian gazelle (*Procapra gutturosa*). The NISP of rodents is 100 (MNI of 24) and that of lagomorphs is 9 (MNI of 3). Twenty-six bone fragments were attributed to wild carnivores. Bird (Aves) and fish (Pisces) bones constitute only 2.4 per cent (NISP = 21) of the assemblage.

## Discussion

Evidence for subsistence practices over the entire 600-year period of occupation at the Zongri site is consistent and clear, with domesticated food plants present alongside the remains of wild animals. Here we present the archaeobotanical and zooarchaeological results from the

**Table 2. Proportions of identified animal remains from the excavation of the Zongri site in 2015 (NISP: number of identified specimens; MNI: minimum number of individuals).**

Species	L1	L2	L3	L4	H1	H2	NISP	NISP%	MNI	MNI%
<i>Canis familiaris</i>		3	3	5		1	12	1.36	4	4.40
<i>Bos</i> sp.			4	1			5	0.57	2	2.20
<i>Cervus elaphus</i>	1	65	18	31	1	7	123	13.98	6	6.59
<i>Capreolus capreolus</i>		10	4	4			18	2.05	4	4.40
Cervidae				8			8	0.91	1	1.10
<i>Moschus</i> sp.	3	51	9	24	2	1	90	10.23	11	12.09
Caprinae		165	107	104	8	8	391	44.43	19	20.88
<i>Procapra gutturosa</i>		20	4	16		4	44	5.00	6	6.59
Antilopinae		18		20			33	3.75	3	3.30
<i>Marmota bobak</i>	1	36	25	34		1	97	11.02	21	23.08
<i>Lepus</i> sp.		4	2	3			9	1.02	3	3.30
Rodentia		1	1	1			3	0.34	3	3.30
<i>Panthera</i> sp.		2	3	6		1	12	1.36	3	3.30
Felidae		4	5	2			11	1.25	3	3.30
Canidae				3			3	0.34	2	2.20
Aves		8	6	5			19	2.16		
Pisces				2			2	0.23		
<b>Total</b>	<b>5</b>	<b>387</b>	<b>191</b>	<b>263</b>	<b>11</b>	<b>23</b>	<b>880</b>	<b>100</b>	<b>91</b>	<b>100.00</b>

whole occupation (examples on Figures 3 & 5) to then concentrate on the proportions of flora and fauna for each layer.

At the Zongri site, the number of wild animals far outweighs that of the domesticates, a predominance consistent with previous studies of Zongri Culture sites (Chen *et al.* 1998). The only domesticate recovered at the Zongri type-site was dog, a species domesticated by foragers as early as 31 050 cal BC in southern East Asia, and which was probably used in hunting and the protection of human camps (Dayan 1994). Remains of wild animals included Mongolian gazelle (*Procapra gutturosa*), blue sheep (*Pseudois nayaur*), wild boar (*Sus* sp.), marmot (*Marmota bobak*), sika deer (*Moschus* sp.), musk deer and hare (*Lepus* sp.), together with an unidentified species of cattle that may have been either wild or domesticated (Figure 6).

The archaeobotanical remains from the Zongri site contrast with the faunal remains in that domesticated crops, namely broomcorn and foxtail millets, represent up to 96.6 per cent of the assemblage (Table S1). This suggests that, at the very least, the inhabitants consumed agricultural products, a hypothesis seemingly confirmed by the high C<sub>4</sub> contribution in human bone samples (Cui 2006). We argue, however, that these crops were not necessarily grown at the site (Hung *et al.* 2014; d’Alpoim Guedes 2018). Millets are not frost-resistant, and the modern upper limit for millet cultivation in this area is approximately 2400m asl (Wang 1994; d’Alpoim Guedes *et al.* 2016; d’Alpoim Guedes 2018). All Zongri sites, however, are located higher than 2600m asl (Bureau of National Cultural Relics 1996, 2010). Furthermore, there is no historical evidence for millet cultivation in the Gonghe Basin (Council of Chinese Agriculture 2002) (Figure 7).



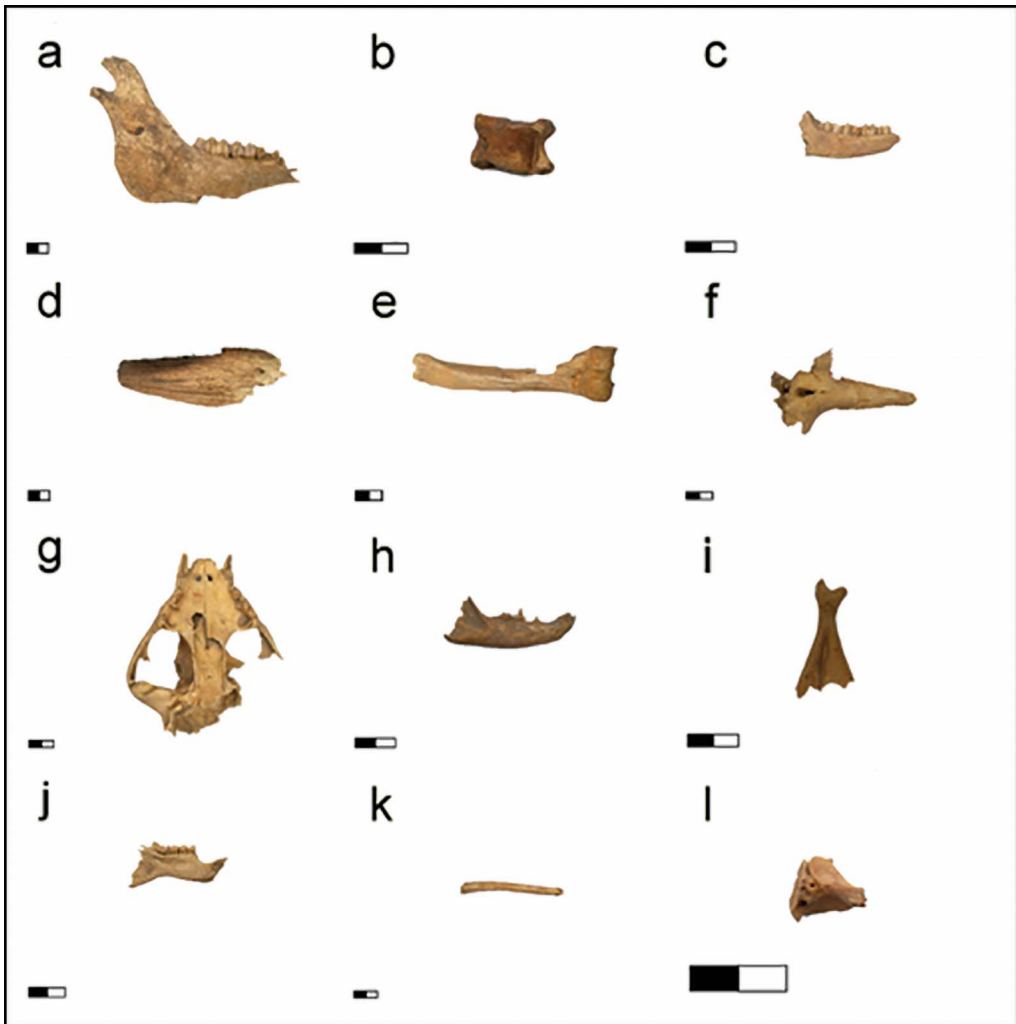


Figure 5. Animal remains from the Zongri type-site: a) deer (*Cervus sp.*); b) roe deer (*Capreolus capreolus*); c) musk deer (*Moschus sp.*); d) *Bos sp.*; e) *Caprinae*; f) Mongolian gazelle (*Procapra gutturosa*); g) leopard (*Panthera sp.*); h) *Felidae*; i) hare (*Lepus sp.*); j) marmot (*Marmota bobak*); k) fish (*Pisces*); l) bird (*Aves*) (scales in cm; figure by Lele Ren).

Remains of ancient crops are often found alongside weed seeds that enter the archaeobotanical assemblage during crop processing. Such processing can occur on a daily basis, in which case high proportions of weed seeds are found in assemblages, or by pooling labour at the end of the harvest, which yields a cleaner assemblage of grain with a lower percentage of weed seeds (Fuller & Stevens 2009; Stevens 2013). The proportion of weed seeds at most Majiayao Culture sites is high, averaging 26.4 per cent of the total assemblage (Jia 2012). This would indicate that regular crop-processing took place on site, probably undertaken by families who stored unprocessed crops and processed them for their daily needs. The high percentage (96.6 per cent) of crop remains relative to weed seeds identified at the Zongri site is unusual in that it is remarkably higher than that from contemporaneous late Majiayao

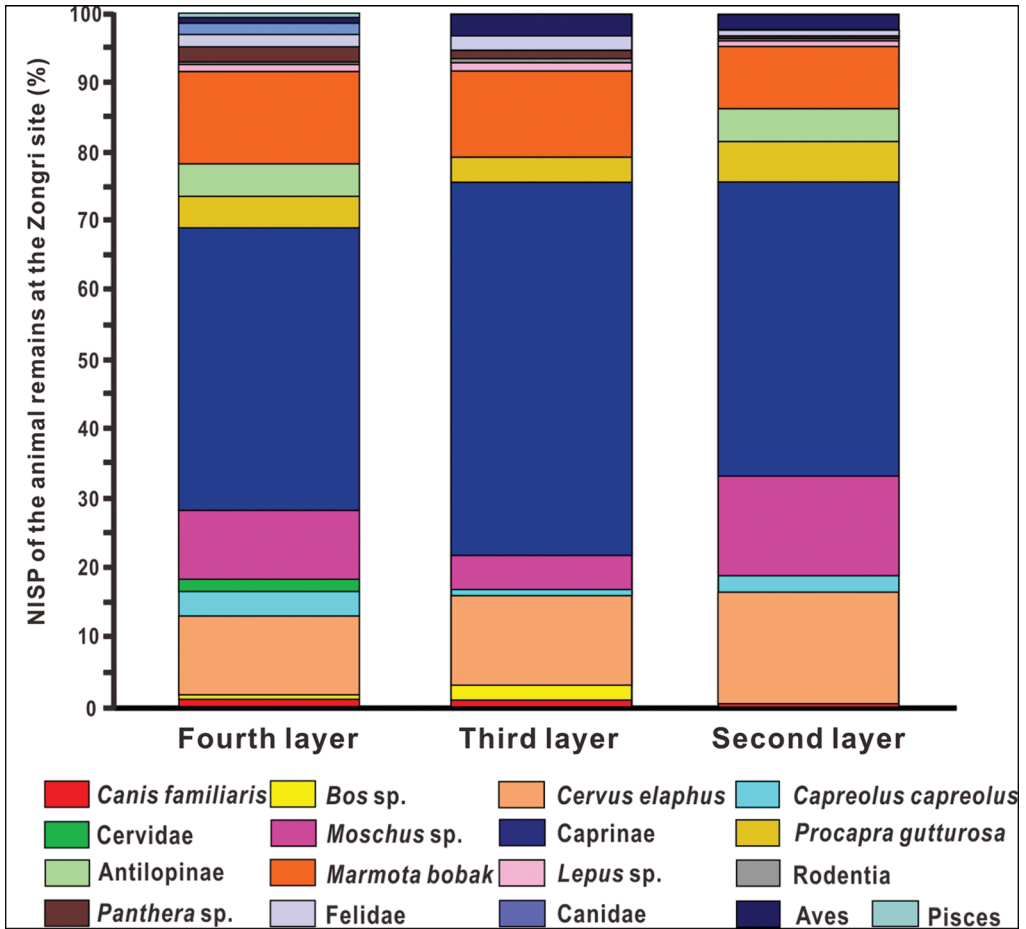


Figure 6. Percentage of identified species (NISP) of animals in samples from the Zongri type-site (figure by Lele Ren).

sites in lower elevations. At other sites of the same period in the middle and lower reaches of the Yellow River, for which agricultural lifestyles are well documented by archaeological and isotopic evidence, crop remains account for an average of 61.9 per cent of all the plants (see Figure 8) (Lee *et al.* 2007).

Three possibilities could explain the high proportion of ‘clean’ grain in the Zongri assemblage:

- 1) Archaeological examples of clean crop remains are sometimes found when a store of such grains has been burnt accidentally (e.g. at the Banpo site in Shannxi Province). This does not seem to be the case at the Zongri site, as we sampled across a variety of spatially and temporally distinct features, and no such grain storage facilities were identified, although the excavation area was small.
- 2) Crops could have been grown near the site and then processed by a large group at the end of the harvest (Stevens 2013). Although Zongri lies

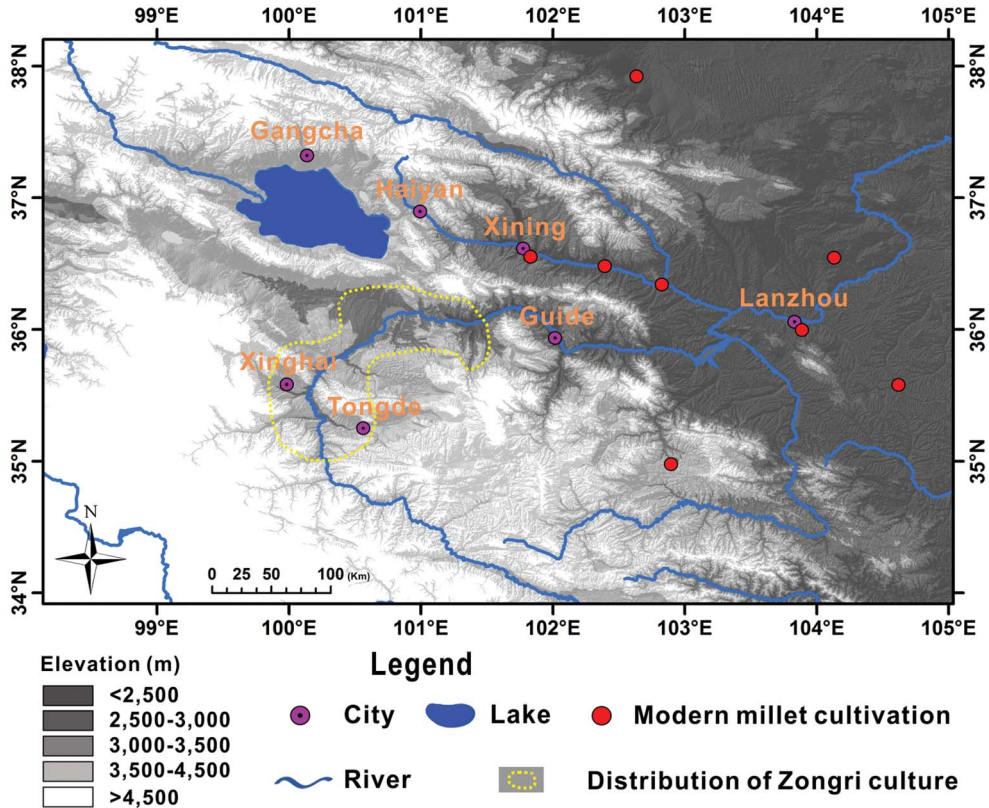
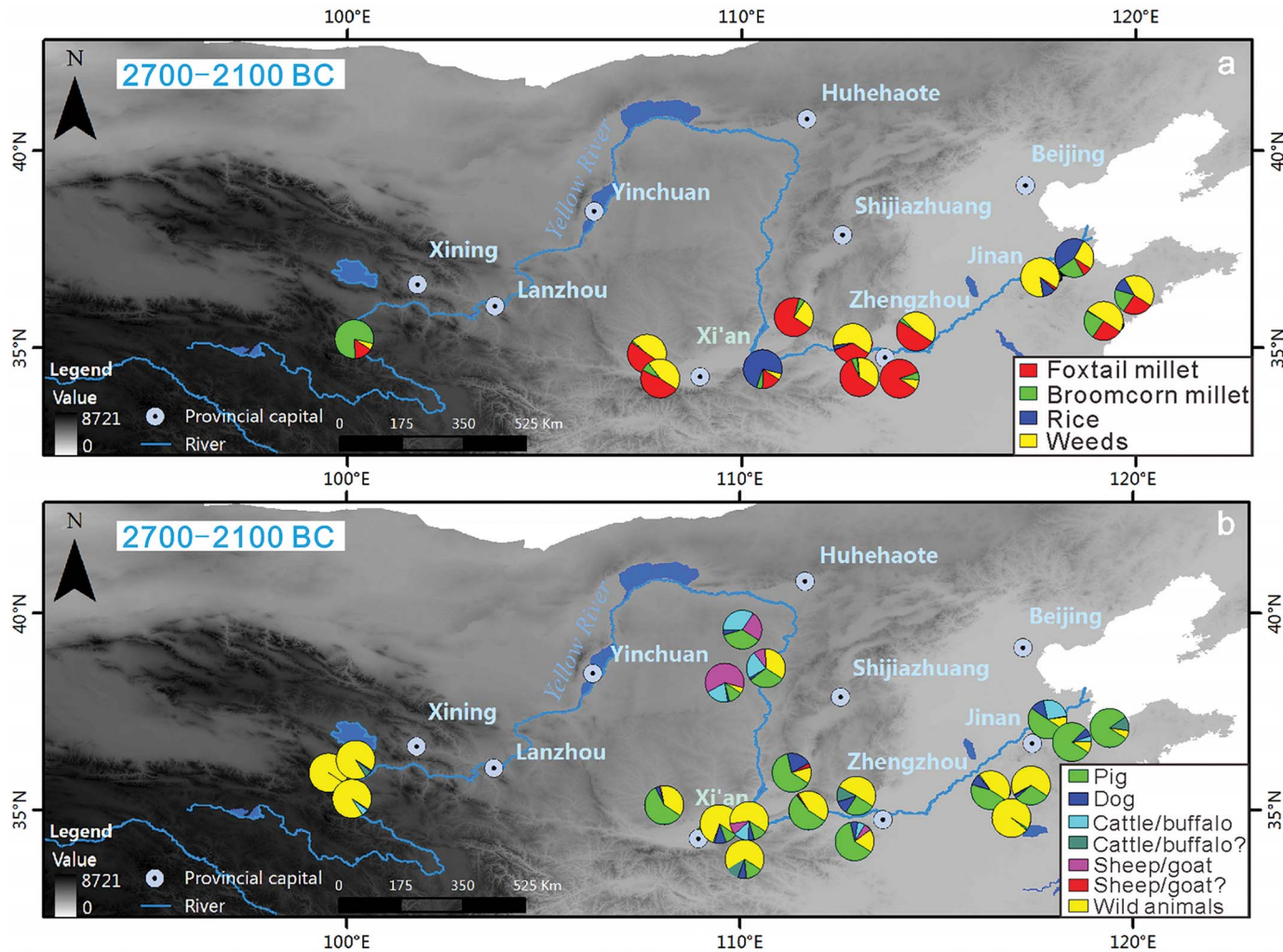


Figure 7. Distribution of modern millet cultivation on the north-eastern Tibetan Plateau and neighbouring areas (figure by Lele Ren).

close to the upper limit for millet cultivation, we cannot discount the possibility that foragers grew small quantities, processing and storing it immediately after harvest. It is possible that the foragers' high investment in hunting made this relatively risky endeavour worthwhile.

- 3) A clean crop of grain may have been acquired through exchange with farmers at lower altitude (d'Alpoim Guedes 2018). No sickles, which are generally assumed to have been used to harvest crops, have been identified in our trench at Zongri (Table S2–3). Moreover, the stone tool assemblage from the Zongri site comprises primarily microblades, microblade cores and flaked stone tools (Qinghaisheng Wenwu Guanlichu & Hainanzhou Minzu Bowuguan 1998) (Table S2), which were probably used for activities that included hunting and hide processing. Zongri foragers could have exchanged hunted animals or secondary products derived from these animals for clean, processed grain, a type of exchange that has ethnographic precedents (d'Alpoim Guedes *et al.* 2016).



Lele Ren et al.

Figure 8. Differences in proportions of charred plant and animal specimens from 2700–2100 BC sites at various altitudes across northern China: top) proportions of charred crop and weed seeds; bottom) proportions of livestock and wild animals. Digital elevation model data were retrieved from <http://www.gscloud.cn/> (figure by Lele Ren).

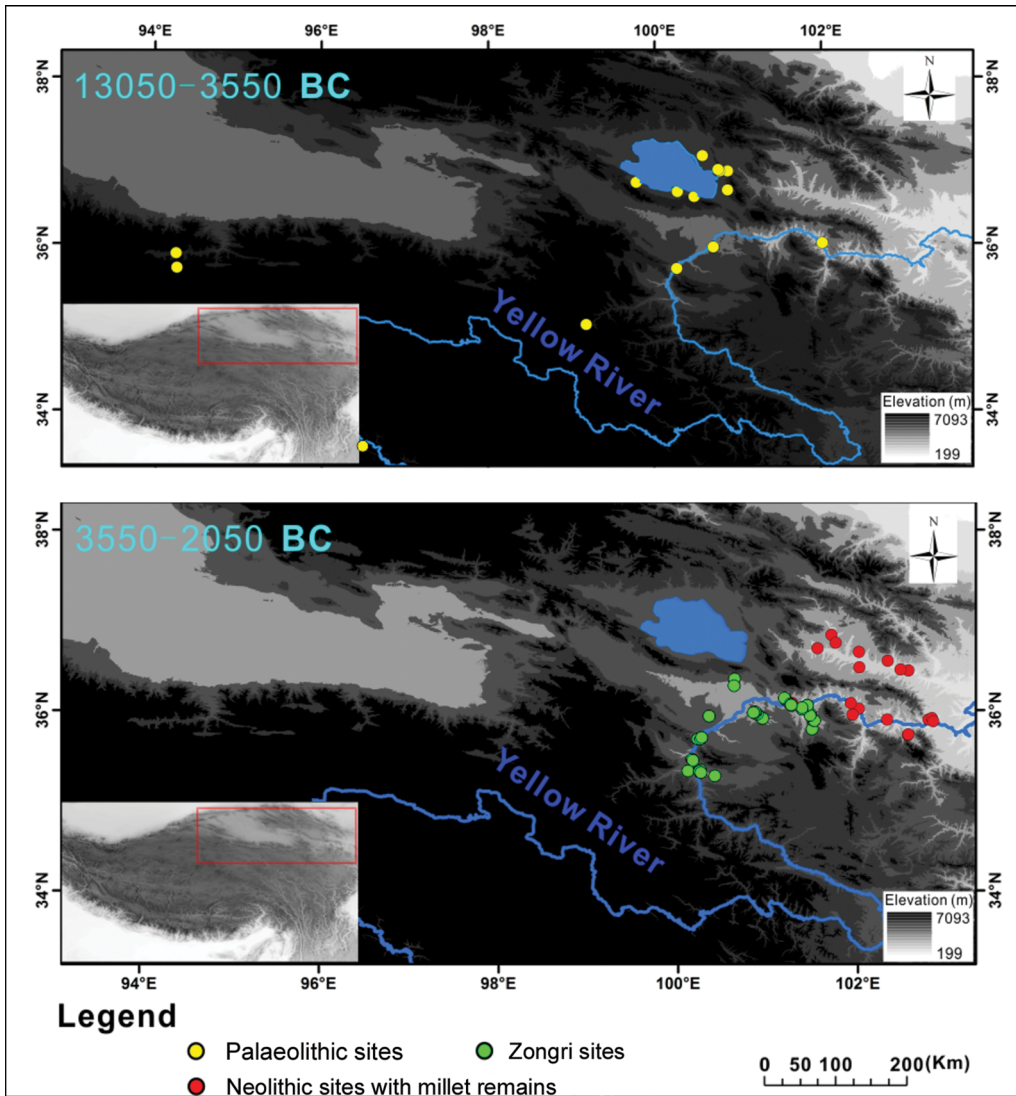


Figure 9. Distribution of known sites associated with foraging and agricultural subsistence practices in the north-eastern Tibetan Plateau during two prehistoric periods: 13 050–3550 BC and 3550–2050 BC (figure by Lele Ren).

Current evidence suggests that between 13 050 and 3550 BC, foragers operated over a much larger area than the Zongri region (Gao *et al.* 2008; Madsen 2009; Meyer *et al.* 2017) (Figure 9 & Table S4), probably employing strategies of higher mobility to ensure that they could access sufficient quantities of both wild plants and animals. Increased opportunities for exchange between Zongri foragers and Majiayao farmers may have led the former to reduce their foraging range and concentrate their subsistence strategies around the Gonghe Basin, where they were able to exchange foraged products for grain with local farmers. Cultural exchange between foragers and farmers, involving dietary habits, burial customs

and technology, has been observed in other Early to Mid Holocene regions of the world (e.g. Whittle 1996; Vanmontfort 2008; Higham *et al.* 2011).

Our research demonstrates that the processes that led to millet deposition at the Zongri site were fundamentally different from those in the core Majiayao area. Instead of foragers adopting farming, as has been previously suggested (Cui 2006), the exchange of subsistence products made it possible for foragers and farmers to co-exist on parts of the Tibetan Plateau during the Zongri period. After 2000 cal BC, the subsistence patterns in this region shifted to barley and pastoral animals, such as sheep, both of which were introduced from Western Asia. These resources allowed the region's inhabitants to adapt to the cooler conditions of the Late Holocene and permitted them to move calories (in the form of pastoral animals) into areas of higher altitude than those at which crops could be grown. While it is possible that the indigenous inhabitants of the Tibetan Plateau played an active role in the adoption of millets and, later, barley as well as pastoral animals, the question of who was responsible for adopting this new suite of domesticates requires further investigation. Future research should therefore move beyond models of simple population replacement, and aim to reveal the complex relationships between multiple groups of people who interacted at the eastern margins of the Tibetan Plateau.

### Acknowledgements

This research was supported by the National Key R&D Program of China (grant 2018YFA0606402); the Strategic Priority Research Program of the Chinese Academy of Sciences, Pan-Third Pole Environment Study for a Green Silk Road (Pan-TPE) (grant XDA2004010101); the Fundamental Research Funds for the Central Universities (grant 2019jbkzy014); the National Natural Science Foundation of China (grants 41901089 & 41620104007); and the International Partnership Program of the Chinese Academy of Sciences (grant 131C11KYSB20160061). Our 2015 excavation at Zongri, directed by the Qinghai Provincial Institute of Cultural Relics and Archaeology, was permitted by the State Administration of Cultural Heritage of China (grant 12XKG006). This article is dedicated to the memory of Hung Lingyu, whose work changed our understanding of forager/farmer interaction on the Tibetan Plateau.

### Supplementary material

To view supplementary material for this article, please visit <https://doi.org/10.15184/aqy.2020.35>

### References

- D'ALPOIM GUEDES, J. 2018. Did foragers adopt farming? A perspective from the margins of the Tibetan Plateau. *Quaternary International* 489: 91–100. <https://doi.org/10.1016/j.quaint.2016.12.010>
- D'ALPOIM GUEDES, J., S.W. MANNING & R.K. BOCINSKY. 2016. A 5500-year model of changing crop niches on the Tibetan Plateau. *Current Anthropology* 57: 517–22. <https://doi.org/10.1086/687255>
- AMMERMAN, A.J. & L.L. CAVALLI-SFORZA. 1973. A population model for the diffusion of early farming in Europe, in C. Renfrew (ed.) *Explanation of culture change: models in prehistory*. 335–58. London: Duckworth.

- AN, J.Y. & H.H. CHEN. 2010. Report of the faunal remains from Zongri Culture sites, in Henan Provincial Institute of Cultural Relics and Archaeology (ed.) *Chinese zooarchaeology: volume 1*: 232–40. Beijing: Cultural Relics.
- BELLWOOD, P. & C. RENFREW. 2002. *Examining the farming/language dispersal hypothesis*. Cambridge: McDonald Institute for Archaeological Research.
- BRONK RAMSEY, C. & S. LEE. 2013. Recent and planned developments of the program OxCal. *Radiocarbon* 55: 720–30.  
<https://doi.org/10.1017/S0033822200057878>
- Bureau of National Cultural Relics. 1996. *Atlas of Chinese cultural relics: fascicule of Qinghai Province*. Beijing: China Cartographic Publishing House.
- 2010. *Atlas of Chinese cultural relics: fascicule of the Tibet Autonomous Region*. Beijing: Cultural Relics.
- CHEN, F.H. *et al.* 2015. Agriculture facilitated permanent human occupation of the Tibetan Plateau after 3600 BP. *Science* 347: 248–50.  
<https://doi.org/10.1126/science.1259172>
- CHEN, H.H. 2006. Some thoughts on the research of remains from Zongri, in Northwest University (ed.) *Western archaeology: volume 1*: 106–13. Xi'an: Sanqin.
- CHEN, H.H., S.B. GE & G.L. LI. 1998. A tentative study of the cultural nature of Zongri Culture. *Archaeology (Kaogu)* 5: 15–26.
- Council of Chinese Agriculture. 2002. *Chinese agriculture: Qinghai volume 129*. Beijing: China Agricultural Press.
- CUI, Y.P. 2006. A study of ancient human diet at the Zongri site. Unpublished PhD dissertation, University of Science and Technology of China, Hefei (in Chinese).
- DAYAN, T. 1994. Early domesticated dogs of the Near East. *Journal of Archaeological Science* 21: 633–40. <https://doi.org/10.1006/jasc.1994.1062>
- DONG, G., X. JIA, R. ELSTON, F. CHEN, S. LI, L. WANG, L. CAI & C. AN. 2013. Spatial and temporal variety of prehistoric human settlement and its influencing factors in the upper Yellow River Valley, Qinghai Province, China. *Journal of Archaeological Science* 40: 2538–46.  
<https://doi.org/10.1016/j.jas.2012.10.002>
- FULLER, D. & C.J. STEVENS. 2009. Agriculture and the development of complex societies: an archaeobotanical agenda, in A. Fairbairn & E. Weiss (ed.) *Ethnobotanist of distant pasts: papers in honour of Gordon Hillman*: 37–57. Oxford: Oxbow.
- GAO, D.L. 1985. Discovery of the Turetan site belonging to the Banshan-phase of the Majiayao Culture in Bagou Town, Tongde County. *Journal of the Qinghai Archaeological Society (Qinghai Kaoguxuehui Huikan)* 7: 43–47.
- GAO, X., Z.Y. ZHOU & Y. GUAN. 2008. Human cultural remains and adaptation strategies in the Tibetan Plateau margin region in the Late Pleistocene. *Quaternary Sciences* 28: 969–77.
- HIGHAM, C.F.W., G.M. XIE & Q. LIN. 2011. The prehistory of a friction zone: first farmers and hunters-gatherers in Southeast Asia. *Antiquity* 85: 529–43.  
<https://doi.org/10.1017/S0003598X00067922>
- HONG, L.Y., J.F. CUI, H. WANG & J. CHEN. 2011. A provenance study of the Majiayao painted pottery found in Sichuan Province. *Southern Ethnology and Archaeology (Nanfangminzukaogu)* 7: 1–58.
- HUNG, L.Y., J.F. CUI & H.H. CHEN. 2012. Migration, trade, imitation and innovation: analysis of the Late Neolithic pottery from the Zongri site. *Archaeological Research (Kaoguxueyanjiu)* 19: 325–45.
- 2014. Emergence of Neolithic communities on the north-eastern Tibetan Plateau: evidence from the Zongri cultural sites, in A. Hein (ed.) *The 'crescent-shaped cultural-communication belt': Tong Enzheng's model in retrospect. An examination of methodological, theoretical and material concerns of long-distance interactions in East Asia* (British Archaeology Reports International series 2674): 65–78. Oxford: British Archaeological Reports.
- JIA, X. 2012. Cultural evolution processes and plant remains during the Neolithic–Bronze Age in north-east Qinghai Province. Unpublished PhD dissertation, Lanzhou University (in Chinese).
- KRAUSE-KYORA, B. *et al.* 2013. Use of domesticated pigs by Mesolithic hunter-gatherers in North-western Europe. *Nature Communications* 4: 2348. <https://doi.org/10.1038/ncomms3348>
- LEE, G.A., G. CRAWFORD, L. LIU & X. CHEN. 2007. Plants and people from the Early Neolithic to the Shang periods in north China. *Proceedings of the National Academy of Sciences of the USA* 104: 1087–92.  
<https://doi.org/10.1073/pnas.0609763104>

- LI, S.C. 2009. *Eastern culture moves west: cultural processes in prehistoric China*. Beijing: Cultural Relics.
- MADSEN, D. 2009. The late Upper Paleolithic occupation of the northern Tibetan Plateau margin. *Journal of Archaeological Science* 33: 1433–44.  
<https://doi.org/10.1016/j.jas.2006.01.017>
- MEYER, M.C., M.S. ALDENDERFER, Z. WANG, D.L. HOFFMANN, J.A. DAHL, D. DEGERING, W.R. HAAS & F. SCHLÜTZ. 2017. Permanent human occupation of the central Tibetan Plateau in the Early Holocene. *Science* 355: 64–67.  
<https://doi.org/10.1126/science.aag0357>
- MITTNIK, A. *et al.* 2018. The genetic prehistory of the Baltic Sea region. *Nature Communications* 9: 442.  
<https://doi.org/10.1038/s41467-018-02825-9>
- Qinghaisheng Wenwu Guanlichu & Hainanzhou Minzu Bowuguan. 1998. A brief report on the excavation of the Zongri site, Qinghai Province. *Archaeology (Kaogu)* 5: 1–14.
- STEVENS, C.J. 2013. An investigation of consumption and production models for prehistoric and Roman Britain. *Environmental Archaeology* 8: 61–76.  
<https://doi.org/10.1179/env.2003.8.1.61>
- VANMONTFORT, B. 2008. Forager-farmer connections in an ‘unoccupied’ land: first contact on the western edge of LBK territory. *Journal of Anthropological Archaeology* 27: 149–60.  
<https://doi.org/10.1016/j.jaa.2008.03.002>
- WANG, X.Y. 1994. *Zhongguo Shuji*. Beijing: China Agricultural.
- WHITTLE, A.W. 1996. *Europe in the Neolithic: the creation of new worlds*. Cambridge: Cambridge University Press.
- ZVELEBIL, M. 1996. Agricultural frontiers and the transition to farming in the circum-Baltic area, in D.R. Harris (ed.) *The origins and spread of agriculture and pastoralism in Eurasia*: 323–45. London: University College London.