

BJPsych

The British Journal of Psychiatry

Structural abnormalities in gyri of the prefrontal cortex in individuals with schizophrenia and their unaffected siblings

Michael Harms *et al*

Effects of befriending on depressive symptoms and distress

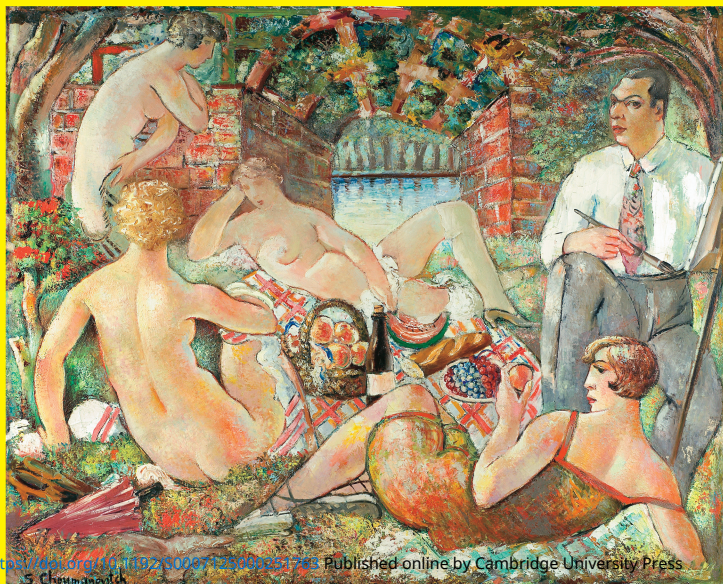
Nicola Mead *et al*

Prediction of transition from common adolescent bipolar experiences to bipolar disorder

Marijn Tijssen *et al*

Twenty-five year mortality of a community cohort with schizophrenia

Steve Brown *et al*



Contents

- A4 Editorial Board
A6 Highlights of this issue

Editorials

- 87 **Predicting onset of bipolar disorder from subsyndromal symptoms: a signal question?**
G. Parker
- 89 **Acute antipsychotic-induced akathisia revisited**
M. Poyurovsky

Reappraisal

- 92 **The Kraepelinian dichotomy – going, going . . . but still not gone**
N. Craddock and M. J. Owen

Review article

- 96 **Effects of befriending on depressive symptoms and distress: systematic review and meta-analysis**
N. Mead, H. Lester, C. Chew-Graham, L. Gask and P. Bower

- 101 **The voices that Ezekiel hears – psychiatry in the Old Testament**
George Stein

Papers

- 102 **Prediction of transition from common adolescent bipolar experiences to bipolar disorder: 10-year study**
M. J. A. Tijssen, J. van Os, H.-U. Wittchen, R. Lieb, K. Beesdo, R. Mengelers and M. Wichers
- 109 **Excellent school performance at age 16 and risk of adult bipolar disorder: national cohort study**
J. H. MacCabe, M. P. Lambe, S. Cnattingius, P. C. Sham, A. S. David, A. Reichenberg, R. M. Murray and C. M. Hultman
- 116 **Twenty-five year mortality of a community cohort with schizophrenia**
S. Brown, M. Kim, C. Mitchell and H. Inskip
- 121 **Mikhail Vrubel – fallen star**
Raymond Cavanaugh Jr
- 122 **Long-term mental health of Vietnamese refugees in the aftermath of trauma**
A. B. Vaage, P. H. Thomsen, D. Silove, T. Wentzel-Larsen, T. Van Ta and E. Hauff
- 126 **Cognition in pregnancy and motherhood: prospective cohort study**
H. Christensen, L. S. Leach and A. Mackinnon
- 133 **Service use and cost of mental disorder in older adults with intellectual disability**
A. Strydom, R. Romeo, N. Perez-Achiaga, G. Livingston, M. King, M. Knapp and A. Hassiotis

- 139 **Treatment response in major depression: effects of personality dysfunction and prior depression**
P. Gorwood, F. Rouillon, C. Even, B. Falissard, E. Corruble and P. Moran

- 143 **White matter hyperintensities, cortisol levels, brain atrophy and continuing cognitive deficits in late-life depression**
S. Köhler, A. J. Thomas, A. Lloyd, R. Barber, O. P. Almeida and J. T. O'Brien

- 149 **Today I do not want to be a doctor – poems by doctors**
Glen Colquhoun

- 150 **Structural abnormalities in gyri of the prefrontal cortex in individuals with schizophrenia and their unaffected sibs**
M. P. Harms, L. Wang, C. Campanella, K. Aldridge, A. J. Moffitt, J. Kuelper, J. Ratnanather, M. I. Miller, D. M. Barch and J. G. Csernansky

- 157 **Fossil fools – psychiatry in pictures**
Lee Galpin

Columns

- 158 Correspondence
161 Ten books. Chosen by Sean A. Spence
164 Book reviews
166 Contents of *Advances in Psychiatric Treatment*
167 Contents of the *American Journal of Psychiatry*
168 From the Editor's desk

Cover picture

Luncheon on the Grass (1927).
Sava Šumanović (1896–1942)

Sava Šumanović, one of Serbia's most important painters, worked in Paris during the 1920s. *Luncheon on the Grass* (1927) was painted shortly before the onset of his mental illness. Šumanović described fighting sadness by adopting a cheerful tone in his work. This painting reveals the full splendour of his colourist sensibility, showing 'real' figures (the painter's self-portrait and a clothed female figure), alongside 'imaginary' nudes without individual characteristics. There are conflicting views about his diagnosis. Šumanović's gallery holds that he succumbed to mental exhaustion, whereas some art historians maintain that he suffered from paranoid psychosis. After his first episode of mental illness, he returned to Šid, his home town, and, during the 1930s while recovering from a mental breakdown, he painted landscapes and imaginary female nudes. Šumanović was killed during the Second World War by police from the Independent State of Croatia.

Text provided by Dr Jelena Jankovic Gavrilovic from Queen Mary University of London and Milana Kvas MA and Dr Jasna Jovanov from The Pavle Beljanski Memorial Collection.

Reproduced with permission of the copyright holder: The Pavle Beljanski Memorial Collection, Novi Sad, Serbia, www.pavle-beljanski.museum.

We are always looking for interesting and visually appealing images for the cover of the *Journal* and would welcome suggestions or pictures, which should be sent to Dr Allan Beveridge, British Journal of Psychiatry, 17 Belgrave Square, London SW1X 8PG, UK or bjp@rcpsych.ac.uk

