

Asylum and Mental Hospital Reports for 1918-19 received :

Derby Mental Hospital.
Fife and Kinross.
Inverness District Asylum.

Also the following Reports :

Proceedings of the American Medico-Psychological Association :
Annual Meeting, Chicago, June 2nd-7th, 1918.
Report of the Chemical Laboratory, Cardiff City Mental Hospital,
No. 2.

The following pamphlets, reprints, etc., have been received :

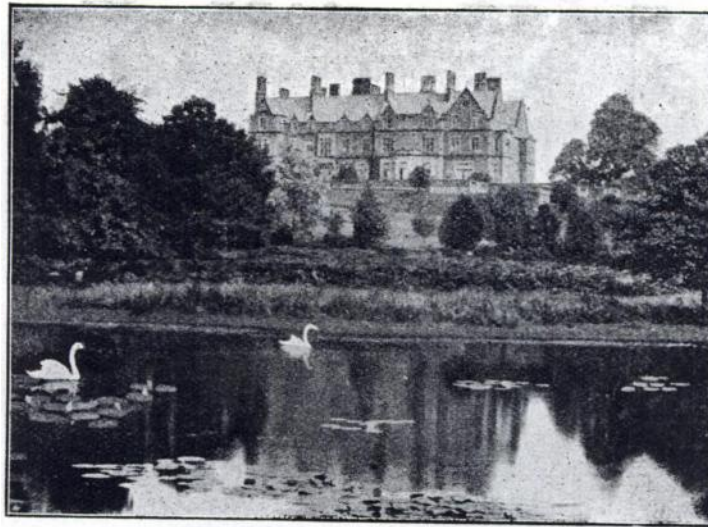
Normal and Morbid Conditions of the Testes from Birth to Old
Age, by *Sir Frederick W. Mott, K.B.E., F.R.S.*
John Coakley Lettsom and the Foundation of the Medical Society.
by *Sir StClair Thomson, M.D.*
Articles by *Dr. R. Benon (Nantes).*
The English Convict, by *Charles Goring, M.D.*
Studies in Mental Inefficiency, January, 1920, vol. i, No. 1.
L'Informateur des Alienists et des Neurologists, January, 1920.
Asylum News, December, 1919.
Morningside Mirror, May and June, 1919.

Books for Review :

Pleasure - Unpleasure, by *A. Wohlgemath, D.Sc.(Lond.)*, 1919;
Monograph Supplement VI (*Brit. Journ. of Psychol.*).
John Coakley Lettsom, by *Sir StClair Thomson, M.D.*
Morning Knowledge, by *Alastair Shannon*, 1920.
Diseases of the Nervous System, by *Smith Ely Jelliffe, M.D.*, and
William A. White, M.D.

BOREATTON PARK.

Founded by the late W. H. O. SANKEY, M.D., F.R.C.P., for the reception of a limited number of ladies and gentlemen mentally afflicted, and now conducted on the same lines by his son, E. H. O. SANKEY, M.A., M.B., B.C.Cantab.



The house, a first-class country Mansion, specially adapted for its purpose, stands about 400 ft. above the sea and commands magnificent views of Welsh mountain scenery.

The Gardens slope to the West, and lead to the Deer Park, one of the oldest in the kingdom,

There is fishing both for trout and coarse fish in the pools in the Deer Park, and the right of fishing in about 5 miles of the River Perry is leased.

There are Hot Houses and Orchard House.

Private Golf Course of 18 holes, Tennis Courts, and Croquet Lawns.

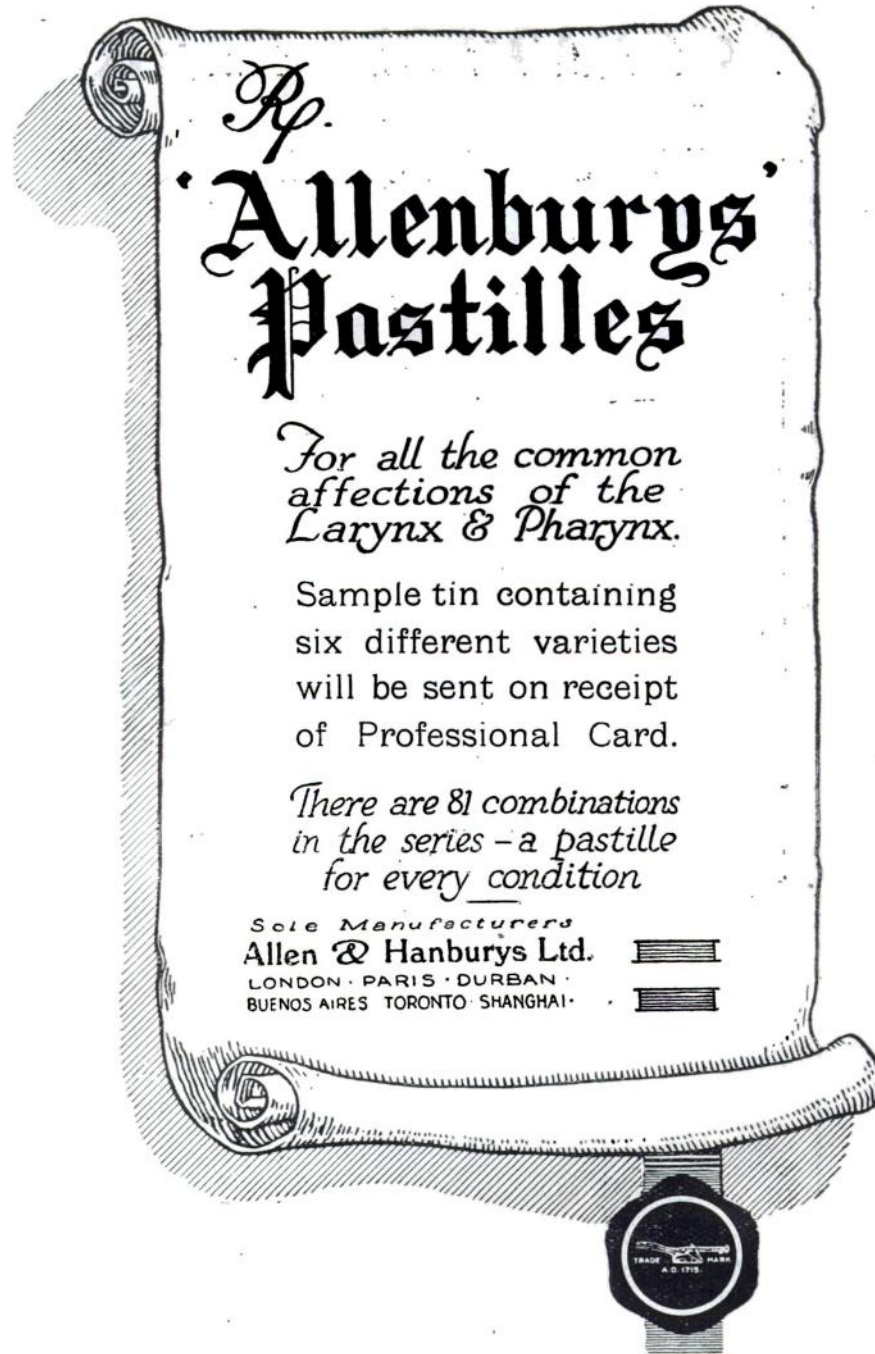
So far as possible the patients of both sexes take their meals and associate at all times with the family of the Superintendent, the object being to make the house as much as possible like an ordinary country house.

Arrangements can be made for friends of the Patients to reside in the house should they desire to do so.

There is good stable accommodation, and Horses, Carriages and Motor are provided.

For further particulars apply--

Dr. SANKEY, Boreatton Park, Baschurch, Salop.



R.

Allenburys Pastilles

*For all the common
affections of the
Larynx & Pharynx.*

Sample tin containing
six different varieties
will be sent on receipt
of Professional Card.

*There are 81 combinations
in the series - a pastille
for every condition*

Sole Manufacturers
Allen & Hanburys Ltd.
LONDON · PARIS · DURBAN ·
BUENOS AIRES · TORONTO · SHANGHAI ·

TRADE MARK
A.D. 1715

BORDERLAND PATIENTS.

SOUTH BEACON

**Hadlow Down,
Nr. Uckfield, Sussex.**

ESTABLISHED 1892.

Telegrams: "Hadlow Down."

Station: Buxted (L.B. & S.C.R.)

□
Outdoor
Occupation
a Speciality.
□



□
The usual
Recreations
of a Country
House.
□

**For the reception of 15 gentlemen requiring
rest and quietness, but who are not
ill enough for certificates.**

Terms from 5 Guineas per week.

Full particulars from :: :: PHILIP H. HARMER.

EPILEPSY

Is so uniformly and so remarkably benefited by the use of

GELINEAU'S DRAGEES

(Pot.-Brom.; Antim.-Arsen.; Picrotoxine)

that no case should be considered hopeless until these Dragees have been thoroughly tried. **RELIEF—AND A GREAT DEAL MORE**—are usually obtained even when routine treatment fails completely.

GELINEAU'S DRAGEES

are successfully prescribed by leading Physicians, and are used in Hospitals and Epileptic Colonies. *Their use is also indicated in the nervous and painful crises of Menstruation and in the varying manifestations of Shell Shock.*

In tins of 50 and 150. Full particulars from the general Agents for the United Kingdom:

WILCOX, JOZEAU & Co., 49, Haymarket, London, S.W. 1.

A. K. CO.

ALWAYS USE

REFLEX

FLOOR POLISH.

REQUIRES NO MIXING WHATEVER.

Brilliantly Polishes Floors, Linoleums, Floorcloths, &c.

Economical, Cleanly, Healthful; Maximum of Lustre for Minimum of Labour.

GEO. T. COX & SONS, Ltd.,

31, KING WILLIAM STREET, LONDON BRIDGE, E.C.

This Polish is specially adapted for use in Public Institutions and other large establishments. Samples Free on application