

VOL. III

No. 6

O R Y X



THE JOURNAL OF
THE FAUNA PRESERVATION SOCIETY

November, 1956

Price 3/6

THE FAUNA PRESERVATION SOCIETY

Patron :

HER MAJESTY THE QUEEN

President :

THE MARQUESS OF WILLINGDON

Vice-Presidents :

CAPTAIN KEITH CALDWELL
J. SPEDAN-LEWIS, ESQ.

LT.-COL. J. STEVENSON-HAMILTON, J.P., D.L., LL.D.

SIR T. SHENTON THOMAS, G.C.M.G., O.B.E.

DR. WILLARD G. VAN NAME, PH.D.

DR. V. VAN STRAELEN.

Hon. Treasurer :

IAN D. MALCOLMSON, ESQ.

Secretary and Editor of Oryx :

LT.-COL. C. L. BOYLE

Assistant Secretary :

MISS KATHLEEN CLARKE

Council :

Chairman : THE MARQUESS OF WILLINGDON

Vice-Chairmen : CAPTAIN KEITH CALDWELL

SIR T. SHENTON THOMAS, G.C.M.G., O.B.E.

W. AMEER ALI, ESQ., C.I.E., I.C.S.
(Retired).

F. S. COLLIER, ESQ., C.B.E.

F. FRASER DARLING, ESQ., D.Sc.,
PH.D., F.R.S.E.

G. DENT, ESQ., M.C.

JAMES FISHER, ESQ., M.A.

R. S. R. FITTER, ESQ.

LIEUT.-COL. G. A. E. GIBBS.

THE LORD HURCOMB, G.C.B., K.B.E.

I. D. MALCOLMSON, ESQ.

L. HARRISON MATTHEWS, ESQ., Sc.D.,
F.L.S., F.R.S.

S. A. NEAVE, ESQ., C.M.G., O.B.E.,
M.A., D.Sc., F.R.E.S.

D. R. ROSEVEAR, ESQ., C.B.E.

E. O. SHEBBEARE, ESQ.

SIR WILLIAM LING TAYLOR, C.B.E.

THE LADY TWEEDSMUIR, M.P.

G. KENNETH WHITEHEAD, ESQ.

Offices :

c/o Zoological Society of London, Regent's Park, London, N.W. 1

Telephone Number :

Primrose 3333

Subscriptions :

Annual Subscription : £1.	Life membership : Age under 41	£20
	„ 41-60	£15
	„ 61 and over	£10

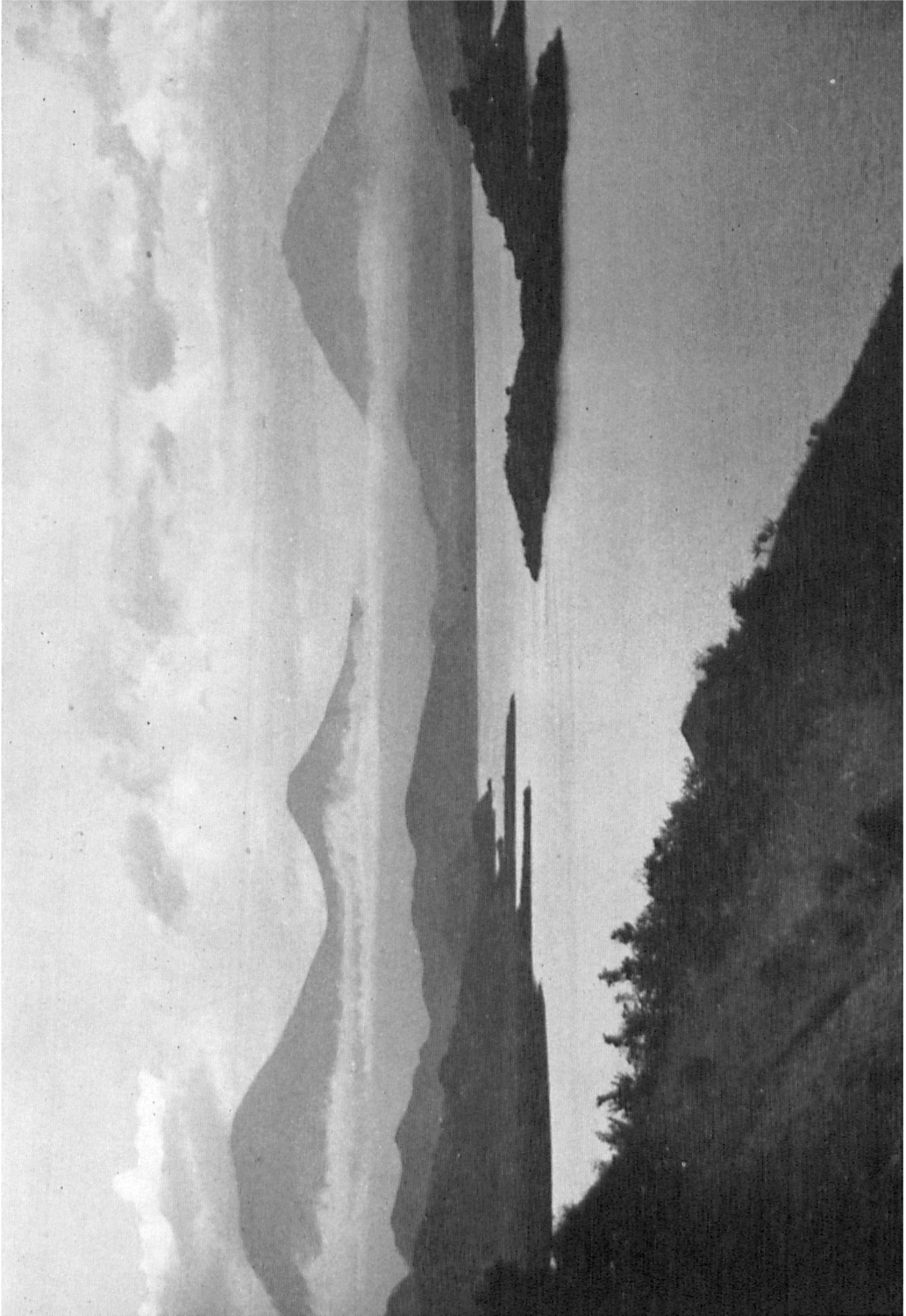
Bankers :

BARCLAYS BANK, LTD., Camden Town, N.W. 1.

Notice :

This Society accepts no responsibility for opinions expressed in articles.

November, 1956



[Photo : John Bleicer

THE BIRUNGA VOLCANOES FROM LAKE MUTANDA.

Left to right : Muhavura, Mgahinga, Sabinio.

CONTENTS

	PAGE
EDITORIAL NOTES	281
THE MOUNTAIN GORILLA AND ITS HABITAT IN THE BIRUNGA VOLCANOES. <i>By John Blower, B.Sc.</i>	287
THE NATIONAL PARK OF GORONGOZA. <i>By Dr. Mario De Alcantara</i>	298
WHAT OF THE SERENGETI? <i>By Lt.-Col. C. L. Boyle</i>	303
DOMESTIC CATTLE AND AUROCHS. <i>By F. E. Zeuner</i>	319
POACHING IN THE JIPE AREA OF THE TSAVO ROYAL NATIONAL PARK, KENYA. <i>By Peter Jenkins, Assistant Warden</i>	323
LOCHINVAR RANCH, NORTHERN RHODESIA	327
NATURE PROTECTION IN THE U.S.S.R. <i>By G. P. Dementiev</i>	331
BRITISH MAMMALS—	
THE MAMMALS OF LAKELAND. <i>By Ernest Blezard</i>	334
REVIEW	338
SHORTER NOTICES	340
THE SOCIETY'S BUSINESS	341

ILLUSTRATIONS

THE BIRUNGA VOLCANOES FROM LAKE MUTANDA	<i>Frontispiece</i>
A GORILLA BED AMONG GIANT LOBELIAS IN THE SUB-ALPINE ZONE	294
MT. MUIAVURA. SHOWING TYPICAL GORILLA HABITAT IN THE HYPERICUM ZONE	294
THE MOUNTAIN GORILLA	295
LIONS AND BUFFALOES IN THE GORONGOZA NATIONAL PARK	302
WIRE SNARES WHICH CATCH AND SLOWLY STRANGLE LARGE ANTELOPES	320
ZEBRA TRAPPED BY AFRICAN POACHERS	320

MAPS

MOUNTAIN GORILLA HABITATS IN THE BIRUNGA AND KAYONZA REGIONS	289
PART OF MOZAMBIQUE	299
THE SERENGETI NATIONAL PARK (MAP I)	305
" " " " (MAP II)	310
PART OF KENYA	324