

Directions for Contributors to *Invasive Plant Science and Management*

Invasive Plant Science and Management is a broad-based journal that focuses not only on fundamental and applied research on invasive plant biology, ecology, management, and restoration of invaded non-crop areas, but also on the many other aspects relevant to invasive species, including educational activities, policy issues, and case study reports.

Topics include the biology and ecology of invasive plants in rangeland, prairie, pasture, wildland, forestry, riparian, wetland, aquatic, recreational, rights-of-ways, and other non-crop (parks, preserves, natural areas) settings; genetics of invasive plants; social, ecological, and economic impacts of invasive plants and their management; design, efficacy, and integration of control tools; land restoration and rehabilitation; effects of management on soil, air, water, and wildlife; scholarship in education, extension, and outreach methods and resources; technology and product reports; mapping and remote sensing, inventory and monitoring; technology transfer tools; case study reports; and regulatory issues. Invasion Alerts, consisting of brief communications that document new invasive plant introductions, significant range extensions (e.g., new habitats, states or regions of the country), or new relevant taxonomic information, are also welcome. Please consult the complete Directions for Contributors (available online at <http://wssajournals.org/userimages/ContentEditor/1335293792389/IPSM%20Directions%20for%20Contributors.pdf>) for specific requirements. Symposia papers and reviews are accepted. Consult the editor for additional information.

Please use PeerTrack to access manuscript submissions (<http://www.edmgr.com/ipsm>). Figures can be merged into a single file for the initial submission, but must be submitted as separate files from the text/tables at all revision stages. The following text file formats are acceptable for text: Microsoft Word, Corel Word Perfect, Rich Text Format (RTF), and Text. Electronic versions of graphics are accepted in the following formats: TIFF, EPS, PDF, JPEG, Word, PowerPoint, and Postscript. If accessing the PeerTrack site is impractical or impossible, please send one copy of the manuscript and all figures on a disk to the Managing Editor, Beverly Lindeen, Allen Press, Inc., 810 E. 10th Street, Lawrence, KS 66044 or e-mail to blindeen@allenpress.com.

Authors are asked to pay a portion of publication costs. These costs are currently \$65 per page plus an additional processing charge of \$50 per manuscript if none of the authors are WSSA members. Exceptions can be made by the Editor but must be requested when the manuscript is first submitted.

PREPARING THE MANUSCRIPT

STYLE. Refer to the complete Directions for Contributors (available online at <http://wssajournals.org/userimages/ContentEditor/1335293792389/IPSM%20Directions%20for%20Contributors.pdf>) as guides to proper style. Manuscripts should be in the following order: Short title for running footer, Title (no separate title page), Author(s), Abstract (untitled), Nomenclature, Key Words, Interpretive Summary (see below), Introduction, Materials and Methods, Results and Discussion, Sources of Materials, Acknowledgments, Literature Cited, Tables, and Figures Legends. All original research articles should include an Interpretive Summary. This is a brief (one page, double spaced) description of the importance of the work to the field practitioner.

TYPING INSTRUCTIONS. Include line numbers in your manuscript. Lines should be numbered consecutively throughout the entire document. Double-space everything, including pages with tables, figure legends, footnotes, and literature citations. Do not indent subheadings or sub-subheadings. Indent paragraphs.

TITLE. Capitalize the first letter of all major words. Include the scientific name without authority for all weeds.

AUTHORS. Provide the full name of each author (first, middle initial [optional], and last) and include an email address for the corresponding author. Give institutional affiliation and full job title for each author.

ABSTRACT. Begin the abstract on a new page. The abstract must be written as a single paragraph containing an informative digest of the significant findings. Do not include the word abstract.

NOMENCLATURE. Only include weeds and crops (with authorships) in the Nomenclature that are mentioned in the Abstract. Common names of weeds should follow the WSSA composite list of weeds at <http://wssa.net/weed/composite-list-of-weeds/>. For herbicides, use WSSA-approved common names or other designations. Give full chemical names for herbicides, other pesticides, or safeners that have no WSSA-approved common names. For plants use the common name followed by the Latin binomial and classifier; Bayer codes may be included for weeds, but are not required. The preferred order is herbicides, weeds, and crops, alphabetized within each group. Example: **Nomenclature:** Glyphosate; 2,4-D; cheat, *Bromus secalinus* L. BROSE; wild oat, *Avena fatua* L.

AVEFA; corn, *Zea mays* L. Note the use of commas and semicolons.

KEY WORDS. List words, word pairs, or phrases not mentioned in the title or nomenclature that further describe the content of the paper.

ABBREVIATIONS. Each nonstandard abbreviation and acronym should be introduced in parentheses immediately after first use of the complete word or phrase.

MEASUREMENTS AND UNITS. Report all measurements in SI units or SI-derived units (see CSE Manual), followed by English units in parentheses for chemical volumes, volumes per area, speed (e.g., km/hr), temperature, distance and area measurement, and product or active ingredient (or acid equivalent) per volume. English units only need to be used once for each unit in text. For example, kg ae/ha (lb ae/ac for first mention of unit; thereafter list only kg ae/ha).

NUMBERS. Use Arabic numerals for all numbers with two or more digits and for all measurements such as time, weight, length, area, concentration, or temperature. Spell out single-digit numerals that are not units of measure.

PLANT AND ANIMAL NAMES. At the first mention in the text of a plant or animal that is not included in the nomenclature, give its common name followed by the approved scientific name enclosed in parentheses or in brackets when parentheses occur within the binomial. Give the genus, species, and author or authors for the binomial. Underline or italicize the genus and species. Repeat scientific names in the text even if they have been used in the Nomenclature section. After first mention of scientific and common name, the use of either throughout the remaining text is the discretion of the author, but both should not be used again together. For cultivar names that are registered trade names, insert the registered trademark (®) after the name. Refer to <http://wssa.net/weed/composite-list-of-weeds/> for approved scientific names, common names, and Bayer codes of weeds. Bayer codes are optional and should be used only for plant species included in the study.

HERBICIDE AND OTHER PESTICIDE NAMES. At the first mention in text of a herbicide or other pesticide not included in the nomenclature, give its common name or other designation. A list of common and chemical names of herbicides approved by the WSSA is available at <http://wssa.net/weed/herbicides/> and is printed each year in the last issue of *Weed Science*.

SOIL TERMINOLOGY. Include the soil series with textural classification and the subgroup name, using the terminology of the U.S. Department of Agriculture Soil Conservation Services publication, *Soil Taxonomy*, 1988 (U. S. Government Printing Office, Washington, D.C.).

STATISTICAL ANALYSES. Data should be analyzed statistically, and results of the analyses should be included in the tables or figures where the data are presented. Multiple comparison tests (LSD and Duncan's multiple range) may be used when appropriate, but not on structured data such as quantitative series of treatments (e.g., herbicide rates in stepwise increments) or factorial treatments.

SOURCES OF MATERIALS. In the Materials and Methods section, the sources of the material should be shown in parentheses following the first mention. Provide a brief description of the item, model number (if applicable), and the source. The company's address (full mailing address or just city and state/country) may also be included although it is not required. Following is an example: "During a single year, large plots were treated with glyphosate (Roundup WeatherMax®, 540 g ai L-1, Monsanto Canada, 900 One Research Road, Winnipeg, Manitoba, Canada, R3T 6E3)."

LITERATURE CITATION. WSSA uses the author-year system with complete citations listed alphabetically beginning on a separate page after the text. Abbreviate journal names using the most recent edition of BIOSIS *Serial Sources* (Philadelphia, PA). In-text literature citations appear alphabetically by author, then chronologically.

FIGURES AND TABLES. Tables should be no more than 120 character spaces wide. All text within each table should be in lower-case letters except the first word of a phrase or sentence. Proper nouns and Bayer codes should be capitalized.

Experimental data may be presented in graphic or tabular form, but not both. Data points and relevant equations must be included on figures. Type figure legends on a separate page.

MANUSCRIPT REVIEW. Manuscripts will be reviewed for content and presentation by two or more anonymous Reviewers and an Associate Editor. Communications concerning changes are with the Associate Editor. Final acceptance or rejection is the prerogative of the Editor.

Sustaining Members

WEED SCIENCE SOCIETY OF AMERICA

PRESIDENTIAL

BASF Corporation
Dow AgroSciences
DuPont
Monsanto Agricultural Company
Syngenta Crop Protection

LEADER

Helena Chemical
Valent USA Corporation
Winfield Solutions

PATRON

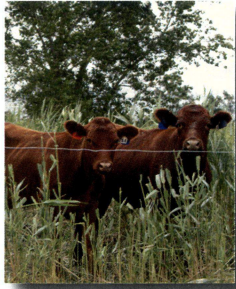
Nufarm Americas
United Phosphorus, Inc.

CONTRIBUTING

AMVAC Chemical Corp.
FMC Corporation
Greenleaf Technologies
Gylling Data Management, Inc.
ISK Biosciences Corp.
Nichino America
Nippon Soda Co. Ltd

ASSOCIATE

ABG Ag Services	Gowan Company
Adjuvants Plus, Inc.	Heartland Technologies
Ag-quest Inc.	LABServices
Chemorse Ltd.	Marrone Bio Innovations, Inc.
Clariant Corporation	Minnesota Valley Testing Lab
Convion	SePRO
Gandy Corporation	TKI NovaSource



Volume 9 Number 2 April–June 2016

Invasive Plant Science and Management

Table of Contents

Research

- Effect of Aminocyclopyrachlor on Seedling Grasses. Katie L. Wirt and Rodney G. Lym. 87
- Regional and Local Genetic Variation in Japanese Stiltgrass (*Microstegium vimineum*). Theresa M. Culley, Cynthia D. Huebner, and Ari Novy. 96
- Plastid DNA Analysis Reveals Cryptic Hybridization in Invasive Dalmatian Toadflax (*Linaria dalmatica*) Populations. Andrew Boswell, Sharlene E. Sing, and Sarah M. Ward 112
- Cattle Grazing Effects on *Phragmites australis* in Nebraska. Jerry D. Volesky, Stephen L. Young, and Karla H. Jenkins. 121
- Herbicide Control Strategies for *Ventenata dubia* in the Intermountain Pacific Northwest. John M. Wallace and Timothy S. Prather. 128

Case Study

- Physical Control of Nonindigenous Aquatic Plants in Emerald Bay, Lake Tahoe, CA. Daniel W. H. Shaw, Zachary P. Hymanson, and Tamara L. Sasaki 138

Symposium

- Integrated Strategies for Management of Perennial Weeds. Timothy W. Miller 148