

Access
leading
journals in
your subject

Cambridge Core

Explore today at [cambridge.org/core](https://www.cambridge.org/core)

Cambridge Core



CONTENTS

Breeding and genetics

O'Brien, A. C., McHugh, N., Wall, E., Pabiou, T., McDermott, K., Randles, S., Fair, S. and Berry, D. P.
Genetic parameters for lameness, mastitis and dagginess in a multi-breed sheep population 911

Puledda, A., Gaspa, G., Manca, M. G., Serdino, J., Urgeghe, P. P., Dimauro, C., Negrini, R. and Macciotta, N. P. P.
Estimates of heritability and genetic correlations for milk coagulation properties and individual laboratory cheese yield in Sarda ewes 920

Croué, I., Fouilloux, M. N., Saintilan, R. and Ducrocq, V.
Carcass traits of young bulls in dual-purpose cattle: genetic parameters and genetic correlations with veal calf, type and production traits 929

Judge, M. M., Kelleher, M. M., Kearney, J. F., Sleator, R. D. and Berry, D. P.
Ultra-low-density genotype panels for breed assignment of Angus and Hereford cattle 938

Sánchez-Guerrero, M. J., Cervantes, I., Molina, A., Gutiérrez, J. P. and Valera, M.
Designing an early selection morphological linear traits index for dressage in the Pura Raza Español horse 948

Nutrition

Harris, P. A., Ellis, A. D., Fradinho, M. J., Jansson, A., Julliard, V., Luthersson, N., Santos, A. S. and Vervuert, I.
Review: Feeding conserved forage to horses: recent advances and recommendations 958

Liangzhan, S., Xiang, J., Caixia, Z., Zhaohui, F. and Fuchang, L.
Effect of substitution of oat hulls for traditional fiber source on digestion and performance of fattening rabbits 968

Krogh, U., Bruun, T. S., Poulsen, J. and Theil, P. K.
Impact of fat source and dietary fibers on feed intake, plasma metabolites, litter gain and the yield and composition of milk in sows 975

Zhao, P. Y., Zhang, Z. F., Lan, R. X., Liu, W. C. and Kim, I. H.
Effect of lysophospholipids in diets differing in fat contents on growth performance, nutrient digestibility, milk composition and litter performance of lactating sows 984

Miguel-Pacheco, G. G., Curtain, L. D., Rutland, C., Knott, L., Norman, S. T., Phillips, N. J. and Perry, V. E. A.
Increased dietary protein in the second trimester of gestation increases live weight gain and carcass composition in weaner calves to 6 months of age 991

Naadland, S. S., Steinshamn, H., Krizsan, S. J. and Randby, Å. T.
Effect of organic grass-clover silage on fiber digestion in dairy cows 1000

Physiology and functional biology of systems

Mielenz, M.
Invited review: nutrient-sensing receptors for free fatty acids and hydroxycarboxylic acids in farm animals 1008

Zawacka, M., Murawska, D. and Gesek, M.
The effect of age and castration on the growth rate, blood lipid profile, liver histology and feed conversion in Green-legged Partridge cockerels and capons 1017

Paten, A. M., Pain, S. J., Peterson, S. W., Lopez-Villalobos, N., Kenyon, P. R. and Blair, H. T.
Effect of dam weight and pregnancy nutrition on average lactation performance of ewe offspring over 5 years 1027

Behaviour, welfare and health

Campbell, D. L. M., Hinch, G. N., Downing, J. A. and Lee, C.
Outdoor stocking density in free-range laying hens: effects on behaviour and welfare 1036

Stadig, L. M., Rodenburg, T. B., Ampe, B., Reubens, B. and Tuytens, F. A. M.
Effects of shelter type, early environmental enrichment and weather conditions on free-range behaviour of slow-growing broiler chickens 1046

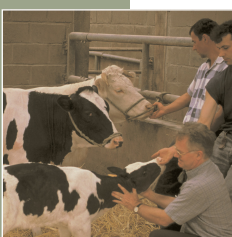
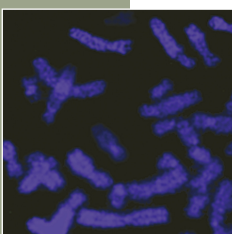
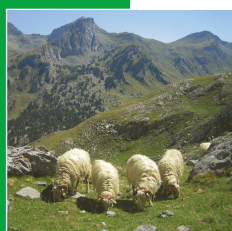
Webb, L. E., van Reenen, C. G., Engel, B., Berends, H., Gerrits, W. J. J. and Bokkers, E. A. M.
Understanding oral stereotypies in calves: alternative strategies, hypothalamic-pituitary-adrenal axis (re)activity and gene by environment interactions 1054

Paludo, E., Ibelli, A. M. G., Peixoto, J. O., Tavernari, F. C., Lima-Rosa, C. A. V., Pandolfi, J. R. C. and Ledur, M. C.
The involvement of RUNX2 and SPARC genes in the bacterial chondronecrosis with osteomyelitis in broilers 1063

Parois, S. P., Faouën, A., Le Floc'h, N. and Prunier, A.
Influence of the inflammatory status of entire male pigs on their pubertal development and fat androstenone 1071

Rangstrup-Christensen, L., Krogh, M. A., Pedersen, L. J. and Sørensen, J. T.
Sow-level risk factors for stillbirth of piglets in organic sow herds 1078

Magrin, L., Brscic, M., Lora, I., Rumor, C., Tondello, L., Cozzi, G. and Gottardo, F.
Effect of a ceiling fan ventilation system on finishing young bulls' health, behaviour and growth performance 1084



Cambridge Core

For further information about this journal
please go to the journal web site at:
cambridge.org/animal



MIX
Paper from
responsible sources
FSC® C007785

CAMBRIDGE
UNIVERSITY PRESS