

Research Article

*These authors contributed equally to this work.

Cite this article: Glarou M, Kerametsidis G, Akkaya A, Beqiri K, Nikpaljevic N, Awbery T, Bakiu R, Geijer CKA (2022). Using off-the-shelf GPS loggers to assess co-occurrence between marine mammals and small-scale fisheries: a pilot study from the Mediterranean Sea. *Journal of the Marine Biological Association of the United Kingdom* **102**, 322–332. <https://doi.org/10.1017/S0025315422000522>

Received: 17 August 2021
Revised: 19 March 2022
Accepted: 13 June 2022
First published online: 7 September 2022

Key words:

Bottlenose dolphins; data loggers; fisheries interactions; GPS; monk seals; small-scale fisheries



Authors for correspondence:

Maria Glarou,
E-mail: maria_glarou@outlook.com;
Georgios Kerametsidis,
E-mail: gkerametsidis@gmail.com

© The Author(s), 2022. Published by Cambridge University Press on behalf of Marine Biological Association of the United Kingdom. This is an Open Access article, distributed under the terms of the Creative Commons Attribution licence (<http://creativecommons.org/licenses/by/4.0/>), which permits unrestricted re-use, distribution and reproduction, provided the original article is properly cited.



Using off-the-shelf GPS loggers to assess co-occurrence between marine mammals and small-scale fisheries: a pilot study from the Mediterranean Sea

Maria Glarou^{1,2,*} , Georgios Kerametsidis^{2,3,*} , Aylin Akkaya², Kristian Beqiri⁴, Natasa Nikpaljevic², Tim Awbery², Rigers Bakiu⁴ and Christina K. A. Geijer¹

¹Department of Ecology, Environment and Plant Sciences, Stockholm University, Stockholm, 106 91, Sweden; ²DMAD – Marine Mammals Research Association, Kuşkavağı Mah. 07070, Antalya, Turkey; ³Department of Ecology and Genetics, Uppsala University, Uppsala, 751 05, Sweden and ⁴Department of Aquaculture and Fisheries, Faculty of Agriculture and Environment, Agricultural University of Tirana, Kodër-Kamëz, Albania

Abstract

Fisheries constitute a major threat to marine mammals globally. To evaluate the impact of small-scale fisheries (SSF) on regional under-studied marine mammal populations, we tested a novel and cost-effective approach at three data-limited locations of the central and eastern Mediterranean Sea. Using off-the-shelf GPS loggers to track SSF activities and systematic surveys to map the distribution of marine mammals, we assessed the probability of co-occurrence between SSF and marine mammals by reporting areas of spatial overlap. Spatial overlap between SSF and the core zones of marine mammal distribution (ranging between 21.85–35.4%) was observed in all three locations, indicating potential interaction hotspots. The probability of co-occurrence in those areas varied from 0.5–2.9% depending on the species. The resulting overlap between fishing activity and marine mammals may pose a threat in both directions: higher risk of species entanglement and economic burden on fishers due to gear damage. Despite the spatial and temporal limitations of this pilot study, the proposed approach can provide baseline information on SSF-marine mammal co-occurrence, particularly in financially limited regions. If applied on a larger scale, our method may be used to inform future conservation actions with the aim to reduce pressure on key populations.

Introduction

Marine mammals, a sentinel group of marine megafauna, are threatened by a plethora of anthropogenic activities, such as chemical and noise pollution, resource depletion, habitat modification/loss, vessel collisions and fishing activities (Baulch & Perry, 2014; Lauriano *et al.*, 2014; Merchant *et al.*, 2014; Knowlton *et al.*, 2016; Alexiadou *et al.*, 2019; Bernaldo De Quirós *et al.*, 2019; Rudd *et al.*, 2022). In particular, interactions between fisheries and marine mammals usually stem from depredation (i.e. the removal of catch from fishing gear) and are most likely to take place where spatial overlap between marine mammal distribution and fisheries occurs (Fossa *et al.*, 2011; Di Tullio *et al.*, 2016; Zappes *et al.*, 2016). These interactions entail both direct and indirect threats to the animals, such as injuries and drowning from entanglement in fishing gear (i.e. bycatch), prey depletion and intentional killing as a form of retaliation (Bearzi *et al.*, 2006, 2008; Díaz López, 2006; Gonzalvo *et al.*, 2015; Revuelta *et al.*, 2018). In addition to that, fishers are also negatively affected by depredation from marine mammals, as a result of damage in fishing gear and catches of lower quality and quantity (Rocklin *et al.*, 2009) that eventually lead to economic losses (Gönener & Özdemir, 2012). Since most marine mammals display k-selected life traits, i.e. they are long-lived predators with low reproductive and growth rates and high adult survival, even low levels of disturbance can cause considerable impacts on their populations (Heppell *et al.*, 2000).

To date, research efforts on marine mammal-fisheries interactions have been directed mostly towards commercial fleets; however, small-scale and artisanal fisheries are equally associated with high levels of fishery-related interactions and need to be investigated further (Jaramillo-Legorreta *et al.*, 2007; Mangel *et al.*, 2010; Moore *et al.*, 2010; Reeves *et al.*, 2013). Small-scale fisheries (hereafter termed SSF) utilize vessels smaller than 12 m (European Maritime and Fisheries Fund, Regulation 508/2014) and employ more than 90% of the world's fishers, for subsistence or for income generation (FAO, 2018). Preceding studies have mainly used interviews with fishers, on-board observers or remote electronic monitoring systems to obtain relevant information on fisheries interactions (Bartholomew & Shine, 2008; Moore *et al.*, 2010; Bender *et al.*, 2014; Doherty *et al.*, 2014; Goetz *et al.*, 2015; Gonzalvo *et al.*, 2015; Marcalo *et al.*, 2015; Revuelta *et al.*, 2018). Nonetheless, in most developing countries, where SSF prevail, bycatch rates of marine mammals remain either unknown, underestimated or seriously underreported, while data on fishing effort and marine mammal abundance are often non-existent (Soykan *et al.*, 2008).

The Mediterranean Sea is an enclosed basin with a complex geopolitical situation (Geijer & Jones, 2015) and it is home to 11 resident cetacean species (Notarbartolo di Sciarra & Birkun, 2010) and the Endangered (EN) Mediterranean monk seal (*Monachus monachus* Hermann, 1779; hereafter termed monk seals) (Karamanlidis & Dendrinos, 2015). While the western part has received most of the research effort regarding these predators (Kerem *et al.*, 2012), the central and eastern parts are left with just 5.6 and 2.1% of the total research effort, respectively (Mannocci *et al.*, 2018). Even though the central and eastern parts of the Mediterranean Sea are largely oligotrophic, they host most marine mammal species found in this region. Until recently, the research output regarding the impacts of fisheries on local marine mammal populations originating from these areas was limited (IUCN, 2012), however in more recent years a few studies have addressed marine mammal-fisheries interactions in the region (Snape *et al.*, 2018; Karamanlidis *et al.*, 2020; Rudd *et al.*, 2022). In addition to that, interactions between bottlenose dolphins (*Tursiops truncatus* Montagu, 1821; hereafter termed bottlenose dolphins) and SSF have been reported from coastal areas of Sardinia, Italy (Díaz López, 2006; Díaz López & Bernal Shirai, 2007; Pennino *et al.*, 2016), the Balearic Islands, Spain (Brotons *et al.*, 2008; Gazo *et al.*, 2008) and western Greece (Gonzalvo *et al.*, 2015). Likewise, various forms of interactions between SSF and monk seals have been documented in the Aegean Sea (Güçlüsoy, 2008b; Ríos *et al.*, 2017) and in the Atlantic coast off Western Sahara, where an important population of the species resides (González & De Larrinoa, 2013).

The overarching aim of the present study is to provide an initial assessment of potential SSF-marine mammal interactions along the data-limited Montenegrin, Albanian and Turkish coastlines in the central and eastern Mediterranean Sea, by investigating their spatial co-occurrence. To date, no systematic or long-term studies on SSF-marine mammal co-occurrence have been undertaken in the southern Adriatic and Levantine regions for any of the aforementioned species, despite SSF being the main fishing segment of the Montenegrin (78% – 191 SSF vessels), Albanian (61% – 344 SSF vessels) and Turkish (89% – 13,786 SSF vessels) fishing fleets (Ministry of Agriculture and Rural Development, 2015; OECD, 2021; Bakiu *et al.*, 2022). In these regions, SSF vessels lack the Automatic Identification Systems (AIS) or Vessel Monitoring Systems (VMS) that large-scale fishing vessels carry, which severely limits data availability regarding their operations (Witt & Godley, 2007; Dunn *et al.*, 2018). This data gap, in combination with the high cost of other traditional monitoring methods used to obtain information on fisheries interactions (e.g. on-board observers or remote electronic monitoring systems (REMS); Bartholomew & Shine, 2008; Moore *et al.*, 2010; Bender *et al.*, 2014; Doherty *et al.*, 2014; Goetz *et al.*, 2015; Gonzalvo *et al.*, 2015; Marcalo *et al.*, 2015; Revuelta *et al.*, 2018) creates the need for an alternative approach.

Here, we tested a low-cost, off-the-shelf alternative to traditional vessel tracking methods in order to obtain spatial data on SSF activities. These data were then combined with systematic marine mammal observations originating mainly from low-cost, land-based surveys, to assess the probability of SSF-marine mammal co-occurrence. Specifically, the objectives of this pilot study were (i) to determine and quantify the extent of spatial overlap between fishing activities and marine mammal presence; and (ii) to estimate the probability of co-occurrence. Our study was based on the hypothesis that areas with SSF-marine mammal co-occurrence may entail higher risk of fishery-related impacts on threatened marine mammal species (Fossa *et al.*, 2011; Di Tullio *et al.*, 2016; Zappes *et al.*, 2016). By identifying these zones of co-occurrence and potential interactions, we were able to provide essential baseline information that future studies can

build upon. Such information will facilitate future coastal zone management and conservation actions to quantify and reduce the pressure on threatened populations, as well as contribute to the designation of Marine Protected Areas (MPAs) and Fisheries Restricted Areas (FRAs).

Materials and methods

Study sites

The study was conducted in two locations of the southern Adriatic Sea and one in the Turkish Levantine Sea (Figure 1). The Adriatic Sea is a semi-enclosed water mass, with asymmetrical bathymetry (Blake & Topalović, 1996), extending to ~138,000 km² of surface area (Cushman-Roisin *et al.*, 2001), and can be separated into two sub-regions: the north and the south (Geographical Sub-Areas 17 and 18, respectively) (The General Fisheries Commission for the Mediterranean, 2009). The deep, southern sub-basin comprises 55% of the surface area, but ~80% of the total volume of the Adriatic Sea, which is considered a pelagic ocean habitat (Fonda-Umani, 1996) with high salinity (Cushman-Roisin *et al.*, 2001) and oligotrophic waters (Morand & Briand, 1996). The first selected site was the area around the central and southern Montenegrin coastline, while the second site was the Gulf of Drin in the northern Albanian coastline (Figure 1A). Although the marine fishery has a relatively small contribution to the economy of Montenegro and Albania (FAO – AdriaMed, 2006, 2009), it constitutes a sector of major socio-economic value, as it generates employment opportunities in small coastal communities. Thus, our sampling efforts were focused on (i) the port of Bar in Montenegro and (ii) the ports of Shëngjin and Cape of Rodon in Albania (Supplementary Table S1).

The Levantine Sea is the easternmost and warmest part of the Mediterranean Sea, and it is described as one of the most oligotrophic oceanic water bodies in the world both in primary production and in chlorophyll-a concentrations. Antalya Bay is situated in the north-eastern Levantine Sea in the southern Turkish coastline covering an area of ~6500 km² with a maximum depth of 2600 m and is characterized by high seawater temperature and salinity (Catani *et al.*, 1983). A submarine canyon, known as the Antalya canyon, is the most notable feature of the seafloor topography and stretches from the north-west to the south-east (Tezcan & Okyar, 2006; Özbek *et al.*, 2015). Marine fishery plays an important role in the Turkish economy (Yilmaz *et al.*, 2008) with the Mediterranean coastline being a major component thereof (FAO, 2008). The northern part of Antalya Bay was chosen as the survey site for this region, where the main hub of fishing activities is located (ports of Yeni Liman and Kaleiçi) (Figure 1B; Supplementary Table S1).

Data collection

To assess the co-occurrence between SSF and marine mammals, we obtained spatial data via two different approaches: (i) installing off-the-shelf GPS loggers onto fishing vessels to track SSF operations; and (ii) collecting land-based and vessel-based observations to obtain marine mammal presence data.

Spatial data on small-scale fishing activity

To collect spatial data on SSF operations, we selected a low-cost, off-the-shelf alternative to traditional vessel tracking methods, based on the methodology of Snape (2019). GPS loggers (iGotU GT600; Mobile Technology; €69 each) were placed on a set sample of fishing boats, after securing permission by the owner of each vessel. Upon this verbal briefing, we were communicated

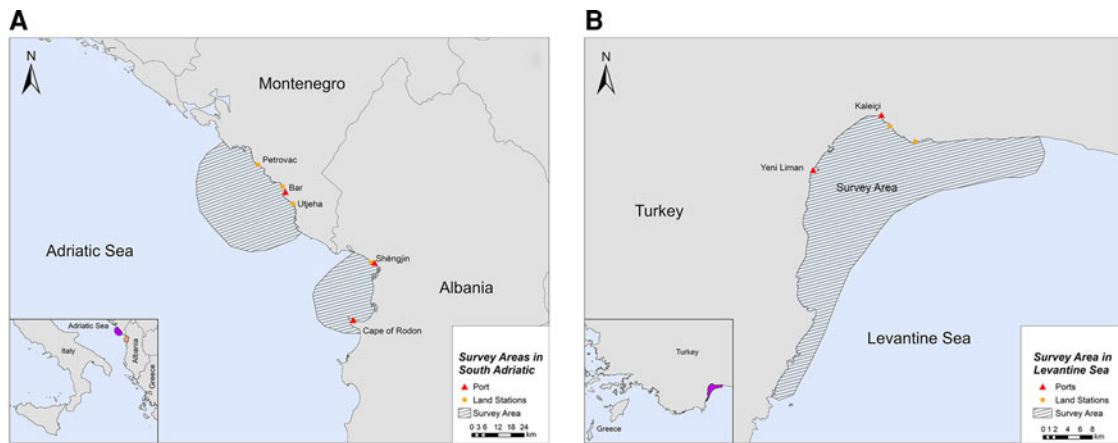


Fig. 1. Study sites in (A) South Adriatic (Montenegro and Albania) and (B) Levantine Sea (Turkey).

that both fishing grounds and gear type did not change during the year. This held true for the majority of fishers operating in the selected ports, even for those that did not agree to participate in the present study (DMAD – Marine Mammals Research Association, unpublished data). Therefore, a sample size of at least 15% of the total small-scale fishing fleet of each port was deemed representative of fishing habits (Lauriano *et al.*, 2009). Only vessels that used gillnets were selected, since gillnets are the gear type which is most commonly implicated in marine mammal bycatch (Read *et al.*, 2006; Geijer & Read, 2013). This study followed the gillnet definition used by Reeves *et al.* (2013) and adopted by the FAO and the International Whaling Commission (IWC), in which the term ‘gillnets’ includes set and fixed gillnets, trammel nets, drift nets and any other unspecified gill or ‘entangling’ net. GPS loggers were sealed in a small waterproof plastic bag with insulation tape and were placed in open areas of the vessel to ensure high quality satellite signal reception. The loggers were pre-programmed to record the position and velocity of the vessel every 5 minutes. When the vessel was idle (e.g. stationed in port), a detector sensitive to motion was activated, so that data logging would switch off. This way data collection could last up to 4 weeks (Snape, 2019). Bimonthly trips to the ports were scheduled to extract the data, restore, and recharge the loggers.

Spatial data on marine mammal distribution

Data on marine mammal distribution were amassed via land- and vessel-based observations. Marine mammal individuals were classified *in situ* to species level. Land surveys were systematically conducted in all study locations, whilst vessel surveys were only conducted in Montenegro and Turkey due to logistical limitations. Surveys were carried out between 2016–2019 in Montenegro, between 2018–2019 in Albania and 2015–2017 in Turkey.

The selection of the inland observation stations was based on optimized field of view in order to increase the sighting events of the marine mammals (Supplementary Table S1). During land-based observations the geographic position of marine mammals was determined via a theodolite (Model: SOKKIA DT5A). The vertical and horizontal angles of target objects were recorded by the observers and, based on the predetermined reference point and azimuth, the theodolite readings were then converted into geographic positions, using the tracking software Pythagoras (version 1.2) (for further details see Awbery *et al.* 2019).

Vessel surveys were carried out along transect lines and took place only when the visibility was >1 nautical mile and the sea state was between 0 and 3 on the Beaufort scale. During surveys, the research vessel maintained a steady speed, averaging at 4

knots. The geographic position of the vessel was recorded every 2 minutes using a GNSS (Global Navigational Satellite System) tracking device and was then transferred into the software Logger 2010 (Marine Conservation Research, 2019). In the occurrence of a sighting, the research vessel approached the focal group slowly to minimize disturbance, with the vessel remaining idle whenever possible. The focal group was observed from a minimum distance of 50 m and maximum distance 400 m. The true coordinates of any observed focal group were calculated using the angle and the distance of the focal group from the vessel (for further details see Awbery *et al.* 2019).

The extent of all survey areas was determined based on the field of view from land stations and vessel transects (Figure 1). Therefore, the range of each survey area represents the total extent of survey effort for each location.

Data analysis

Spatial data on small-scale fishing activity

To select only data points representative of true fishing activity (i.e. deployment and retrieval of gillnets), a criterion of vessel velocity between 0.8 and 4.9 km h⁻¹ was set during post-processing (Burgos *et al.*, 2013; Russo *et al.*, 2014; De Souza *et al.*, 2016). Lower speeds may indicate periods of offshore or in-port inactivity, whilst speeds above this range indicate travelling in-between fishing grounds or to/from port. Filtered fishing activity data were interpolated in ArcGIS v10.7.1 using a Universal Transverse Mercator (UTM) projection. The point data were then converted to line data, with each line representing a fishing event of a specific vessel. Fishing events were defined based on three criteria (adjusted from Snape 2019): (a) time between consecutive data points being > 10 min, (b) distance between consecutive data points being > 1 km and (c) time and distance between consecutive data points being <30 min and > 300 m, respectively. Kernel Density Estimation (KDE) was then applied, with a cell size of 200 m and a search radius of 1500 m, to predict hotspots of fishing activity. Additionally, the probability P of fishing activity (P_{fa}) taking place in a grid-cell i relative to other cells in a grid of n cells was calculated following Vanderlaan *et al.* (2008):

$$P_{fa_i} = \frac{fa_i, density_i}{\sum_{i=1}^n fa_i, density_i} \quad (1)$$

Spatial data on marine mammal distribution

KDE was applied on the marine mammal presence data to predict the density distribution of the sighted species in each survey site.

Data points were weighted using group size to avoid the under-estimation of marine mammal distribution, while a cell size of 200 m and a search radius of 1500 m was used. For every marine mammal species, the probability P of an individual (P_{mm}) occupying a grid-cell i , relative to other cells in a grid of n cells, was calculated following Vanderlaan *et al.* (2008):

$$P_{mm_i} = \frac{mm, \text{ density}_i}{\sum_{i=1}^n mm, \text{ density}_i} \quad (2)$$

Spatial overlap and probability of co-occurrence between small-scale fisheries and marine mammals

Spatial overlap between the SSF and marine mammals was illustrated by multiplying the fishing activity raster files with marine mammal distribution, which indicated presence/absence in each grid cell. Per cent area overlap (PAO) was then calculated, using equation (3) (Atwood & Weeks, 2003; Di Tullio *et al.*, 2016), where $A_{mm,fa}$ is the overlap area between marine mammals and fishing activities, A_{mm} is the area of marine mammal distribution, and A_{fa} is the area of fishing activities.

$$PAO = \left(\frac{A_{mm,fa}}{A_{mm}} \times \frac{A_{mm,fa}}{A_{fa}} \right)^{0.5} \quad (3)$$

Lastly, to estimate the relative probability of co-occurrence in the overlapping areas, we used the following equation (Vanderlaan *et al.*, 2008):

$$P_{\text{co-occurrence}_i} = \frac{(P_{mm_i}) \times (P_{fa_i})}{\sum_{i=1}^n [(P_{mm_i}) \times (P_{fa_i})]} \quad (4)$$

where P is the probability of a fishing event and a marine mammal individual, both occupying a grid-cell i relative to other cells in a grid of n cells. This equation has been proven to be effective in estimating the probability of fishery-related interactions with sea turtles (Roe *et al.*, 2014).

Results

Spatial data on small-scale fishing activity

Overview of fishing habits

From April to October 2019, spatial data on fisheries operations were collected in all locations. Overall, 8, 11 and 20 fishing vessels were tracked in Montenegro, Albania and Turkey, respectively. The mean number (\pm SD) of sampling days was 88.6 (\pm 26.2) in Montenegro, 19.5 (\pm 2.7) in Albania and 16.9 (\pm 5.4) in Turkey. Sampling took place between June and October in Montenegro, between May and June in Albania, and between April and May in Turkey. Vessels were tracked 24 h per day. To normalize the uneven survey duration, the frequencies of certain fishing behaviours were calculated (Table 1). The highest fishing activity was recorded in Albania, where a single fishing boat completed 1.01 'fishing trips' per 'days attached'. This index was equal to 0.65 for Montenegro and 0.33 for Turkey. In both Montenegro and Albania, there were more than one 'fishing trips' per 'days at sea' (1.3 and 1.35, respectively), while in Turkey this frequency was equal to 0.98, indicating a slight preference for multi-day fishing trips (Table 1). Fishing intensity was expressed as 'days at sea' per 'days attached', and was highest in Albania (0.75), followed by Montenegro (0.5) and Turkey (0.34) (Table 1). Using this ratio, and assuming that the fishing habits remain relatively stable throughout the year (DMAD, unpublished data), the annual fishing intensity was extrapolated for each site (Table 1).

Table 1. Comparison of fishing activity in all locations

Frequency	Turkey	Montenegro	Albania
Days at sea ^a per days attached ^b	0.34	0.5	0.75
Fishing trips ^c per days attached	0.33	0.65	1.01
Fishing trips per days at sea	0.98	1.3	1.35
Extrapolated annual fishing intensity (days of fishing per annum)	124	183	274

^aDay at sea: every calendar day that the fishing boat performed at least one fishing trip.

^bDay attached: every calendar day that a GPS logger was attached on a given fishing boat.

^cFishing trip: the departure and subsequent return of a fishing boat, from and to the port in any given location, where there was at least one fishing event present.

Mapping of fishing activities

Fishing occurred exclusively within the 200 m bathymetric contour close to the shore, in both Montenegro and Albania (Figure 2A, B). In Montenegro, the main fishing hotspot was located near and around the port of Bar, while high intensity fishing areas were also located further offshore, up to ~21 km from the nearest coast (Figure 2A). Other fishing hotspots were located towards the southern part of the study area, closer to Utjeha (Figure 2A). In Albania, SSF operations rarely extended beyond 6.5 km from the nearest coast (Figure 2B). Certain fishing areas, however, existed further offshore, up to ~19 km from the nearest coast. Three main hotspots of fishing activity were revealed in the Gulf of Drin: (a) in front of the Cape of Rodon cove, which also serves as the landing spot and anchorage for the fishing boats, (b) ~4 km on the west of this cove and (c) on the south of Shëngjin port, ~3 km from the Delta of Drin River (Figure 2B).

Likewise, SSF in Turkey showed a strong preference for coastal waters since they tended to operate mostly along the coastline and were almost never recorded further than ~7 km from the nearest shore (Figure 2C). Most fishing activity occurred within the 200 m bathymetric contour and not more than 5 km away from the nearest shore in Antalya Bay (Figure 2C). Four main fishing hotspots were revealed in Antalya Bay, all within 1–2 km away from the nearest shore: two around Yeni Liman, one close to Kaleiçi and one near Lara beach (Figure 2C).

Spatial data on marine mammal distribution

In total, 422 vessel and land surveys (1427 h 46 m) were carried out in Montenegro (Petrovac, Bar and Utjeha; Supplementary Table S1) over a period of 3 years, between 15 September 2016 and 15 September 2019, with the dominant survey type being land surveys (Supplementary Table S2). In Albania, 20 land surveys (82 h 14 m) were carried out in Cape of Rodon and Shëngjin (Supplementary Table S1) between November 2018 and November 2019 (Supplementary Table S3). Lastly, 133 vessel and land surveys (618 h 26 m) were carried out in Turkey (Antalya Bay; Supplementary Table S1), from March to December of 2015, and between winter, spring and summer of 2016 and 2017 (Supplementary Table S4). Surveys covered daylight hours from all four seasons in all study sites, in an effort to obtain representative samples of marine mammal presence.

Overall, we encountered four marine mammal species during land- and vessel-based surveys year-round: (a) bottlenose dolphins in all locations; (b) striped dolphins (*Stenella coeruleoalba* Meyen, 1833) in Montenegro and Turkey; (c) Cuvier's beaked whales (*Ziphius cavirostris* Cuvier, 1823) in Turkey; and (d) monk seals in Turkey. All the observations regarding striped dolphins and Cuvier's beaked whales in Turkey were located in deep

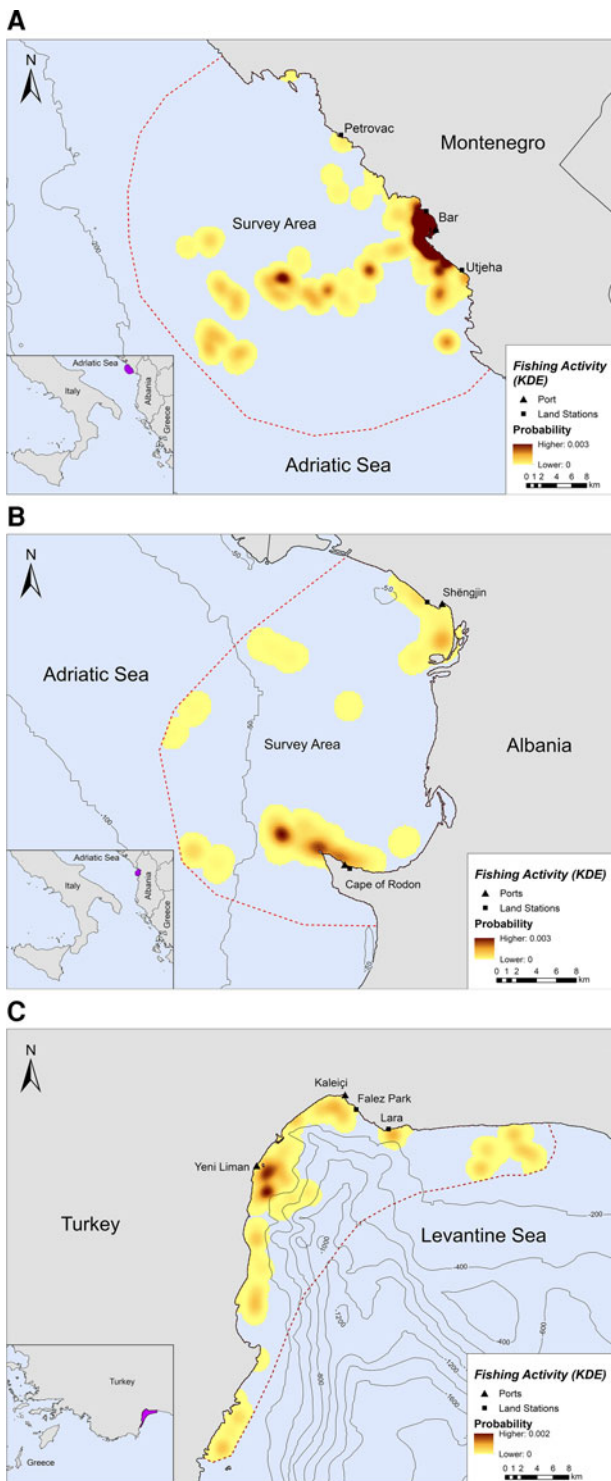


Fig. 2. Kernel density heatmap illustrating the intensity of fishing activities in (A) Montenegro, (B) Albania and (C) Turkey.

waters (> 200 m depth), while in Montenegro there was only one sighting of striped dolphin below 200 m which is atypical for this species (Carwardine, 2019) (Supplementary Figures S1 and S2). Since SSF activity occurred almost exclusively within the 200 m bathymetric contour, we assumed that neither of these species interact directly with SSF. Therefore, for the purpose of this study, striped dolphins and Cuvier's beaked whales were excluded from further analyses.

In Montenegro and Albania, the core distribution zones of bottlenose dolphins were located within the 200 m bathymetric contour and within ~16 km and ~6 km from the nearest shore,

respectively (Figure 3A, B). In Turkey, bottlenose dolphins had the highest density in the central-north part of Antalya Bay near Lara beach resulting in two different core distribution areas, at ~1.2 and 4 km off the coast, respectively (Figure 3C). Monk seals were observed in shallow waters near the coast, mainly in close proximity to the land stations (Figure 3D).

Marine mammals and small-scale fishing activity co-occurrence

Per cent spatial overlap (PAO)

Overlap between SSF and marine mammal distribution was observed in all three locations. The highest PAO values between bottlenose dolphins and fishing SSF were recorded in Montenegro (35.4%), followed by Albania (33.9%) and Turkey (30.3%, Table 2). In Turkey, the PAO value for monk seals and SSF was equal to 21.9% (Table 2). The overlapping areas constitute a visual representation of the critical zones where potential fishery-related interactions may occur, such as bycatch, food depredation and prey depletion (see Figure 4 in the following section).

Spatial overlap and probability of co-occurrence

Bottlenose dolphins and fishing activity occurred in the same areas along the central Montenegrin coastline, especially in the waters around Bar and Utjeha (Figure 4A). The highest probability of co-occurrence was 0.5% at the two main overlap hotspots close to the port of Bar. In the Gulf of Drin, *T. truncatus* and fishing activity overlapped around Cape of Rodon and Shëngjin, with the highest presence and activity recorded close to the former (Figure 4B). The peak probability of co-occurrence was 1.1% for this study site. In Turkey, the relative probability of co-occurrence between bottlenose dolphins and fishing activities was higher in two coastal areas in the north of Antalya Bay, reaching a maximum value of 1.4% per 200 × 200 m cell. These areas represent the main co-occurrence hotspots and are located close to Kaleiçi and Lara beach (Figure 4C). For monk seals, the highest relative probability of co-occurrence was 2.9%. The main overlap hotspot was located in front of Lara beach, at the north part of Antalya Bay (Figure 4D). Overall, areas with higher probability of marine mammal–fishery co-occurrence reflect high densities of fishing vessels, marine mammals, or both combined.

Discussion

This study demonstrates how off-the-shelf GPS loggers can be used together with marine mammal distribution data to predict potential interaction areas between SSF and marine mammals. Our approach highlighted spatial overlap between SSF and marine mammals in all three study areas of the central and eastern Mediterranean Sea. Only a handful of studies, so far, have been able to determine spatial overlap between marine fauna and fisheries using similar concepts (Hamer *et al.*, 2013; Tew Kai *et al.*, 2013; Breen *et al.*, 2016; Lucchetti *et al.*, 2016). To date, no other study has combined marine mammal distribution data with off-the shelf GPS loggers to calculate the spatial overlap and probability of co-occurrence between SSF and marine mammals. Such knowledge is crucial for data-limited regions and may be used to inform future conservation strategies and, ultimately, strengthen current policies regarding coastal zone management, as well as MPAs and FRAs designation.

The GPS methodology in this study demonstrated the feasibility of off-the-shelf technology for tracking SSF and is in line with similar efforts around the world (Alvard *et al.*, 2015; Metcalfe *et al.*, 2017; Snape, 2019). A strong asset of this cost-effective approach is the greater spatiotemporal resolution of tracking data compared

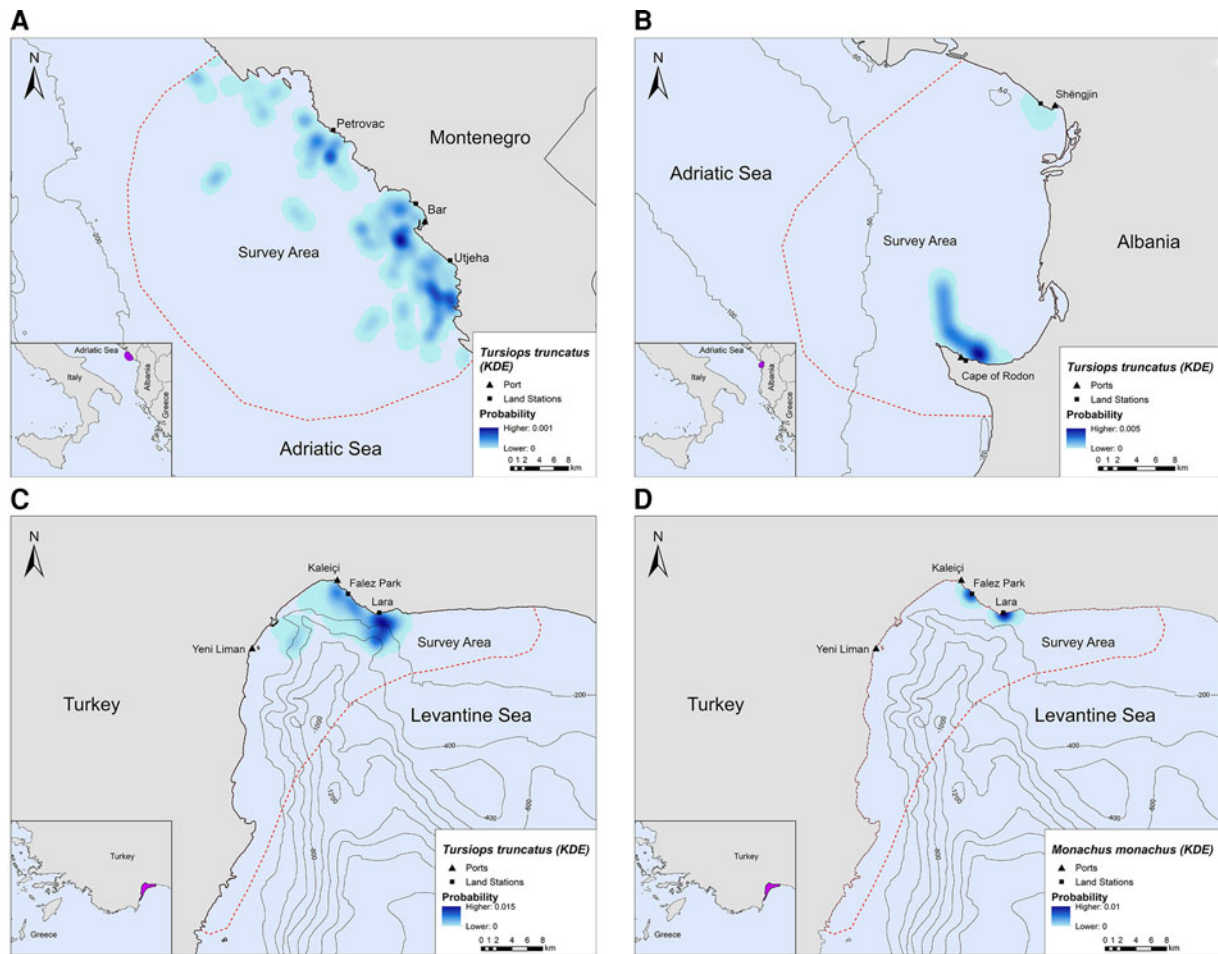


Fig. 3. Kernel density heatmap depicting the distribution of (A) bottlenose dolphins in Montenegro, (B) bottlenose dolphins in Albania, (C) bottlenose dolphins in Turkey and (D) monk seals in Turkey.

with AIS or VMS used in large-scale fisheries (Snape, 2019). Despite recent advancements in the development of low-budget monitoring systems for SSF, the available options still remain too costly (Burgos *et al.*, 2013; Chang & Yuan, 2014). This technique could be deployed in many places with artisanal fisheries to monitor these data-poor communities and develop management and policy strategies. Mean location error (LE) for this GPS model (iGotU GT600) is estimated to be 19.6 m (Morris & Conner, 2017), which is sufficient considering that some GPS devices may show inaccuracy of up to 60 m (Frair *et al.* 2010). The fine time resolution (<5 min) used in this study is in line with Snape (2019) and confirms that these loggers can be broadly used for long-term studies of SSF. Despite the manual labour involved in the monthly check-up of the devices and the lack of real-time tracking, their use in future studies is highly recommended, particularly in financially limited regions.

Indeed, the GPS loggers were able to accurately describe the habits of the tracked fishing vessels and provide an insight

about the fishing intensity in these areas, as corroborated by personal statements provided by the fishers in Montenegro (DMAD, unpublished data). Montenegrin fishers stated that they fish on average 190.9 days per calendar year, which equals to an annual fishing frequency of ~0.52 (DMAD, unpublished data), similar to the one extrapolated from the GPS loggers (0.50), which adds credibility to our methodology. Based on the observed spatial patterns, fishers tended to operate mainly in coastal shallow waters in all locations, a typical characteristic of SSF (Sini *et al.*, 2019; Snape, 2019), which might have negative consequences for marine mammals that occupy this habitat. Indeed, high aggregations of bottlenose dolphins and monk seals were also observed in coastal shallow waters, which is consistent with the ecology of both species (Kıraç *et al.*, 2002; Díaz López, 2006; Bearzi *et al.*, 2012). Yet, the extent of the observed spatial overlap differed among locations and marine mammal species. Specifically, the highest overlap between SSF activities and bottlenose dolphins was calculated in Montenegro and the lowest in Turkey. The different fishing habits observed in each location may explain this variation; in Turkey, the fishing intensity (expressed as ‘days at sea’ per ‘days attached’) was much lower (0.34) than in the other two sites (>0.5). However, the seafloor topography in this area limits SSF to a narrow corridor close to the coast leaving fishers with a smaller area to exploit. In more structured environments, fishing effort is more likely to be concentrated in specific zones where targeted species are found (Medley *et al.*, 1993). This, in turn, may increase the conflict between SSF and marine mammals since both compete for the same resources, as shown by the increased probability of co-occurrence in Antalya

Table 2. Percentage of spatial overlap (PAO) between marine mammals and fishing activity, in all locations

Location (Species)	Spatial overlap (PAO %)
Montenegro (<i>T. truncatus</i>)	35.4
Albania (<i>T. truncatus</i>)	33.9
Turkey (<i>T. truncatus</i>)	30.3
Turkey (<i>M. monachus</i>)	21.9

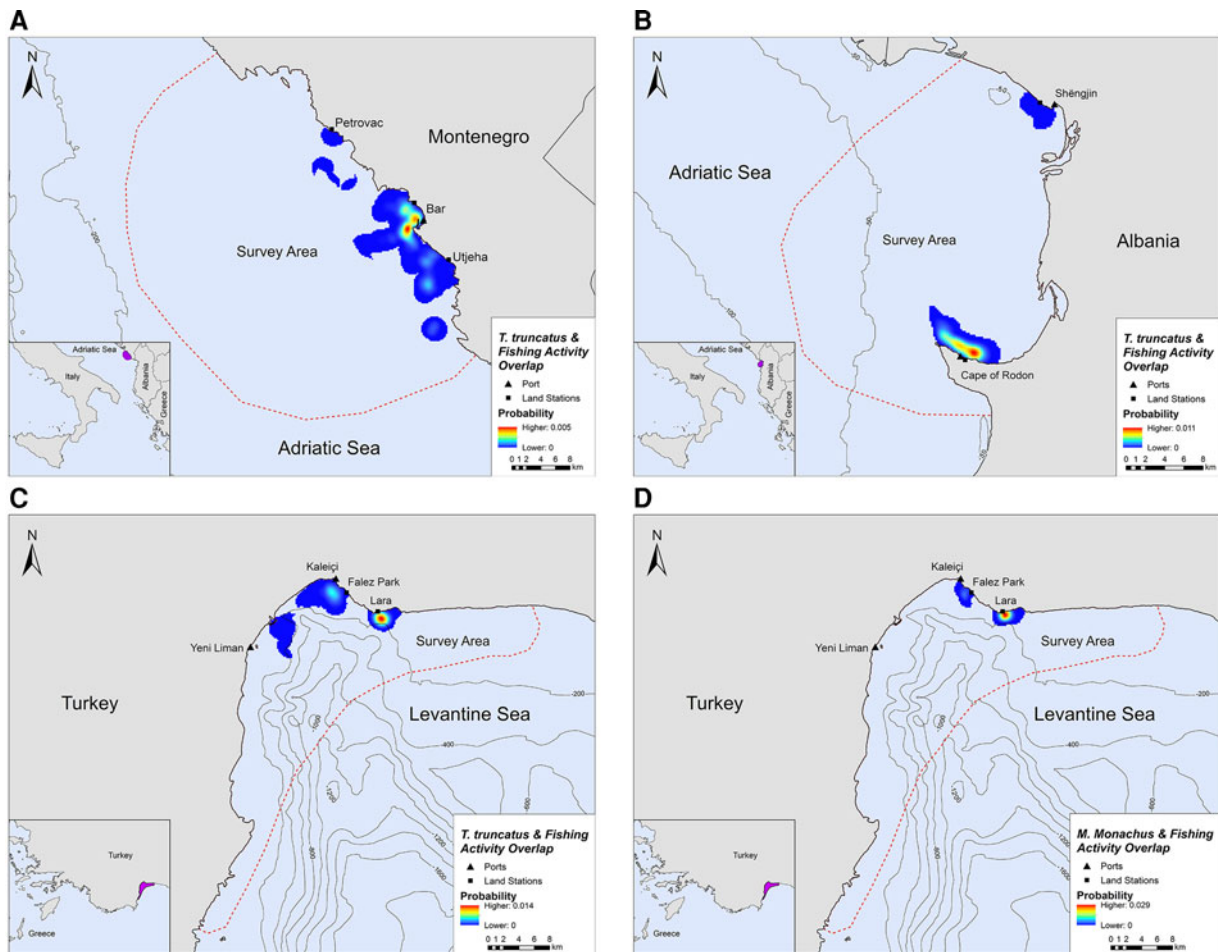


Fig. 4. Areas of spatial overlap between small-scale fishing activity and (A) bottlenose dolphin presence in Montenegro, (B) bottlenose dolphin presence in Albania, (C) bottlenose dolphin presence in Turkey and (D) monk seal presence in Turkey.

Bay. Conversely, in Montenegro and Albania, fishing boats could spread out further offshore, covering a larger part of the survey area, which may explain the higher spatial overlap with bottlenose dolphins in these locations.

The spatial extent of overlap was not always analogous with the estimated probability of co-occurrence. For instance, bottlenose dolphins in Montenegro exhibited the highest area of spatial overlap with SSF, but only the lowest probability of co-occurrence. Therefore, even though the area where interactions may occur was larger, these interactions were overall less likely to take place. This result highlights the importance of quantifying the presumed interactions. In the current study, depending on the location and the marine mammal species, the highest probabilities of co-occurrence, which indicated potential interactions, were seemingly low, ranging from 0.5–2.9%. Other studies with similar methodology found maximal interaction probabilities of 7.5% (Vanderlaan *et al.*, 2008) and 5.4% (Roe *et al.*, 2014). Both studies though had higher survey effort and used a lower spatial resolution for the analysis. Consequently, the lower values in the present study may be linked to the high spatial resolution (200 × 200 m), as the examined study area was significantly smaller than those of Roe *et al.* (2014) and Vanderlaan *et al.* (2008). Analyses with a higher resolution allow for maintaining fine-scale information, while significantly reducing the risk of overestimation (Amoroso *et al.*, 2018).

Overall, low probabilities of co-occurrence should theoretically indicate a low risk of negative interactions between SSF and marine mammals; however, such probabilities need to be interpreted in the context of variables related to each species or population

(i.e. population size, life-history parameters) and the existence of synergetic threats. The case studies in this work represent populations that may be affected differently when considering the biology and ecology of each subpopulation (Wallace *et al.*, 2008). The Mediterranean subpopulation of the bottlenose dolphin is listed as ‘Vulnerable’ in the IUCN Red List with a declining population trend, while the population of the Mediterranean monk seal falls under the ‘Endangered’ category (Karamanlidis *et al.*, 2008; Bearzi *et al.*, 2012). Given their threatened status, it is likely that even low probabilities of co-occurrence may have a significant impact on local populations and in no case should they be considered negligible and reassuring (Heppell *et al.*, 2000). Prey depletion and incidental catches are currently the primary threats to bottlenose dolphins in the Mediterranean Sea (Bearzi *et al.*, 2012). Bycatch in set nets has been previously documented close to coastal areas (Palka & Rossman, 2001; Díaz López, 2006; Brotons *et al.*, 2008), and in at least some locations, bycatch mortality is unsustainable (Brotons *et al.*, 2008). Moreover, prey depletion due to overexploited fishing stocks has been argued as one possible cause for low abundances of bottlenose dolphins in the Adriatic and Ionian Seas (Bearzi *et al.*, 2012). Another severe threat to bottlenose dolphins is depredation, which, despite its potential benefits to the animals, may ultimately have devastating consequences, such as larynx strangulation due to parts ingested from fishing gear (Gomerčić *et al.*, 2009). Similarly, incidental catches of monk seals in gillnets constitute a major threat for the species and have been reported from various locations throughout its distribution range (Karamanlidis *et al.*, 2008; González & De Larrinoa, 2013). Depredation has also

been documented as a considerable indirect threat to monk seals (Ríos *et al.*, 2017). Considering their fragmented population, which numbers ~350 individuals in the eastern Mediterranean Sea (Karamanlidis *et al.*, 2016), it is highly likely that even limited interactions with SSF may exert significant pressure on the species. However, fishers may equally suffer moderate to severe economic losses due to their gear being damaged by depredation (Lauriano *et al.*, 2004; Read, 2008; Ríos *et al.*, 2017). This conflict has historically led fishers to shoot or harass animals as a form of retaliation (Notarbartolo di Sciarra & Bearzi, 2002).

Limitations

With incidental catches being a major threat for both bottlenose dolphins and monk seals in the Mediterranean, developing a protocol to calculate bycatch risk is of central importance in the mitigation of this issue (Güçlüsoy, 2008b; Bearzi *et al.*, 2012). In our study, quantitative data regarding actual bycatch rates were absent in all sites, thereby the depicted overlapping areas are only indicative. To properly estimate bycatch risk, data on the number of set gillnets that are deployed during fishing activity and the capture rates (animals per set net) are also needed (Roe *et al.*, 2014). Nonetheless, using our methodology, we were able to complete the first step of this process by identifying areas with spatial overlap, which may represent potential interaction zones. The lack of equal survey effort among the different study areas, as well as the unbalanced sampling strategy for SSF, also inhibits to some extent the possibility of an accurate comparison among them, since there is uncertainty as to what are the true reasons behind a given difference. Further limitations stem from the short duration of monitoring SSF activities, as there was a temporal offset between SSF tracking and marine mammal surveys. Nevertheless, the majority of fishers in all ports (both those who accepted to participate and those that did not), stated that their fishing habits (i.e. fishing grounds and gear) remained unchanged throughout the year (DMAD, unpublished data). Therefore, considering the year-round presence and site-fidelity of both marine mammal species (Boulva, 1979; Forcada *et al.*, 1999; Gonzalvo *et al.*, 2014; Akkaya *et al.*, 2020), we may infer that the absence of temporal overlap between survey efforts did not affect our results. This, in combination with the opportunistic nature of their diet (Bearzi *et al.*, 2008; Güçlüsoy, 2008a), may still lead to depredation and other forms of interaction throughout the year, even though the target species of SSF may shift.

Implications

Considering the paucity of information on SSF and marine mammal interactions globally, the development of a standardized method for assessing spatial overlap is of central importance to marine mammal and fisheries science. Apart from being replicable on a larger spatiotemporal scale, a standardized methodology will also allow for direct comparisons between different studies and regions. The application of our methodology on a local scale may also contribute to new regulations being proposed regarding the intensity of SSF activities in heavily exploited areas. Conversely, by implementing our methodology on a regional scale, temporal or spatial restrictions of fishing activities may be proposed in an ultimate effort to designate MPAs and FRAs, as well as reduce the pressure on threatened species. Besides that, and irrespective of the extent of the study, it is vital that a mutually beneficial relationship will be established between fishers and marine mammals by providing financial aid to the fishers in cases of gear damage, as well as raising awareness about marine mammals to recognize their central ecological role. In this context, a collaborative approach with the fishers

should be developed, increasing their willingness to report bycatch events, getting them involved in reporting on occurrences of interactions, and ultimately establishing a reporting system.

Conclusions

This study demonstrated that off-the shelf GPS loggers offer an efficient and inexpensive way to monitor SSF activity and, when combined with marine mammal distribution data, to identify areas of marine mammal–fisheries overlap. Data from both these loggers and marine mammal surveys provided baseline information on the probability of co-occurrence of SSF and two threatened marine mammal species in the data-deficient regions of the South Adriatic and Levantine Seas. What is equally important is that our approach can be used to obtain valuable and often missing information on SSF activities, particularly in data-poor areas. Numerous constraints narrow the conclusions that can be drawn from the present analyses, and further research is needed to refine the methodology and create a replicable protocol that can be applied at a larger spatiotemporal scale. The proposed methodology is strongly recommended for future studies, although attention should be paid to the selection of a reliable GPS model. Our approach provides a solid alternative to traditional observation methods, such as on-board observers, which can often be costly and hard to implement on a large scale, particularly in developing countries. By incorporating the proposed suggestions, researchers will possess a useful tool for acquiring insight into SSF co-occurrence with species of concern, in data-deficient and financially constrained regions, with the overarching aim of setting the ground for strengthening management strategies.

Supplementary material. The supplementary material for this article can be found at <https://doi.org/10.1017/S0025315422000522>.

Acknowledgements. All data used in this study belong to DMAD – Marine Mammals Research Association. We thank all the volunteers and interns at DMAD and the Montenegro Dolphin Research for assisting with data collection. We also thank all fishers who agreed to cooperate with us and specifically the Fishery Cooperative of Yeni Liman in Antalya Bay, Turkey. Lastly, we would like to thank the two anonymous reviewers and Ilias Foskolos for their valuable input during manuscript revision.

Author contributions. Conceptualization: MG, GK, AA and CG; Methodology: MG, GK, AA and CG; Validation: MG, GK, AA and CG; Formal analysis: MG and GK; Investigation: MG, GK, AA, KB, NN and TA; Resources: MG, GK, AA, NN and TA; Data curation: MG, GK, AA, NN and TA; Writing – original draft preparation: MG and GK; Writing – review and editing: MG, GK, AA, KB, NN, TA, RB and CG; Visualization: MG and GK; Supervision: AA, RB and CG; Project administration: CG; Funding acquisition: MG, GK, AA and NN. All authors have read and agreed to the submitted version of the manuscript.

Financial support. MG received funding from the Department of Ecology, Environment and Plant Sciences, Stockholm University. GK was funded by the Erasmus + Programme of the European Union. DMAD – Marine Mammals Research Association was funded by WWF-Turkey, the MAVA Foundation and the Rufford Foundation. The APC was funded by Stockholm University.

Conflict of interest. The authors declare no conflict of interest. The funders had no role in the design of the study, in the collection, analyses, or interpretation of data, in the writing of the manuscript, or in the decision to publish the results.

References

- Akkaya A, Lyne P, Schulz X, Awbery T, Capitain S, Rosell BF, Yıldırım B, İlkılınc C, Relva JV and Clark H (2020) Preliminary results of cetacean sightings in the eastern Mediterranean Sea of Turkey. *Journal of Black Sea/Mediterranean Environment* 26, 26–47.

- Alexiadou P, Foskolos I and Frantzis A (2019) Ingestion of macroplastics by odontocetes of the Greek Seas, Eastern Mediterranean: often deadly! *Marine Pollution Bulletin* **146**, 67–75.
- Alvard M, Carlson D and McGaffey E (2015) Using a partial sum method and GPS tracking data to identify area restricted search by artisanal fishers at moored fish aggregating devices in the Commonwealth of Dominica. *PLoS ONE* **10**, 1–23.
- Amoroso RO, Pitcher CR, Rijnsdorp AD, Mcconnaughey RA, Parma AM, Jenkins C, Jonsson P, Kainge P, Kangas M, Kathena JN, Kavadas S, Leslie RW, Lewis SG, Lundy M, Makin D, Martin J, Mazor T, Gonzalez-Mirelis G, Newman SJ, Papadopoulou N, Posen PE, Rochester W, Russo T, Sala A, Semmens JM, Silva C, Tsolos A, Vanellander B, Wakefield CB, Wood BA, Hilborn R, Kaiser MJ and Jennings S (2018) Bottom trawl fishing footprints on the world's continental shelves. *Proceedings of the National Academy of Sciences USA* **115**, E10275–E10282.
- Atwood TC and Weeks HP (2003) Spatial home-range overlap and temporal interaction in eastern coyotes: the influence of pair types and fragmentation. *Canadian Journal of Zoology* **81**, 1589–1597.
- Awbery T, Nikpaljevic N, Clarkson J, Abbiss L, van der Pouw Kraan D, Liebig P, Todorovic S and Bas AA (2019) Bottlenose and striped dolphins of Montenegro: an insight into sighting variations, behavioural patterns, photo-identification, core habitats, marine traffic and conservation initiatives. Montenegro Dolphin Project Annual Report. Available at <https://doi.org/10.13140/RG.2.2.26977.35683/1>.
- Bakiu R, Moutopoulos DK, Gurma M and Çakalli M (2022) Typology of the Albanian small-scale fisheries. *Croatian Journal of Fisheries* **80**, 26–37.
- Bartholomew A and Shine RL (2008) Space size relative to prey width (Sp/Py) influences macrofaunal colonization of artificial structures. *Marine Ecology Progress Series* **358**, 95–102.
- Baulch S and Perry C (2014) Evaluating the impacts of marine debris on cetaceans. *Marine Pollution Bulletin* **80**, 210–221.
- Bearzi G, Fortuna CM and Reeves RR (2008) Ecology and conservation of common bottlenose dolphins *Tursiops truncatus* in the Mediterranean Sea. *Mammal Review* **39**, 92–123.
- Bearzi G, Fortuna CM and Reeves RR (2012) *Tursiops truncatus* Mediterranean subpopulation. *The IUCN Red List of Threatened Species* e.T16369383A16369386.
- Bearzi G, Politi E, Agazzi S and Azzellino A (2006) Prey depletion caused by overfishing and the decline of marine megafauna in eastern Ionian Sea coastal waters (central Mediterranean). *Biological Conservation* **127**, 373–382.
- Bender MG, Machado GR, De Azevedo Silva PJ, Floeter SR, Monteiro-Netto C, Luiz OJ and Ferreira CEL (2014) Local ecological knowledge and scientific data reveal overexploitation by multigear artisanal fisheries in the Southwestern Atlantic. *PLoS ONE* **9**, e110332.
- Bernaldo De Quirós Y, Fernandez A, Baird RW, Brownell RL, Aguilar De Soto N, Allen D, Arbelo M, Arregui M, Costidis A, Fahlman A, Frantzis A, Gulland FMD, Iñiguez M, Johnson M, Komnenou A, Koopman H, Pabst DA, Roe WD, Sierra E, Tejedor M and Schorr G (2019) Advances in research on the impacts of anti-submarine sonar on beaked whales. *Proceedings of the Royal Society B: Biological Sciences* **286**, 20182533.
- Blake GH and Topalović D (1996) *The Maritime Boundaries of the Adriatic Sea*. Durham, UK: IBRU.
- Boulva J (1979) Mediterranean Monk Seal. In *Mammals in the Sea* FAO Fish Series, Rome, Italy: FAO, pp. 95–100.
- Breen P, Brown S, Reid D and Rogan E (2016) Modelling cetacean distribution and mapping overlap with fisheries in the northeast Atlantic. *Ocean and Coastal Management* **134**, 140–149.
- Brotos JM, Grau AM and Rendell L (2008) Estimating the impact of interactions between bottlenose dolphins and artisanal fisheries around the Balearic Islands. *Marine Mammal Science* **24**, 112–127.
- Burgos C, Gil J and Del Olmo LA (2013) The Spanish blackspot seabream (*Pagellus bogaraveo*) fishery in the Strait of Gibraltar: spatial distribution and fishing effort derived from a small-scale GPRS/GSM based fisheries vessel monitoring system. *Aquatic Living Resources* **26**, 399–407.
- Carwardine M (2019) *Handbook of Whales, Dolphins and Porpoises*. London, UK: Bloomsbury Publishing.
- Catani G, Lenardon G, Marchetti A, Tunis G and Vinci A (1983) Sedimentological and seismic features in the Cyprian sector of the eastern Mediterranean Sea: preliminary results. *Bollettino di Oceanologia Teorica ed Applicata* **1**, 311–318.
- Chang SK and Yuan TL (2014) Deriving high-resolution spatiotemporal fishing effort of large-scale longline fishery from vessel monitoring system (VMS) data and validated by observer data. *Canadian Journal of Fisheries and Aquatic Sciences* **71**, 1363–1370.
- Cushman-Roisin B, Gacic M, Poulain PM and Artegiani A (eds) (2001) *Physical Oceanography of the Adriatic Sea: Past, Present and Future*. Dordrecht: Springer Science.
- De Souza EN, Boerder K, Matwin S and Worm B (2016) Improving fishing pattern detection from satellite AIS using data mining and machine learning. *PLoS ONE* **11**, 1–20.
- Díaz López B (2006) Interactions between Mediterranean bottlenose dolphins (*Tursiops truncatus*) and gillnets off Sardinia, Italy. *ICES Journal of Marine Science* **63**, 946–951.
- Díaz López B and Bernal Shirai JA (2007) Bottlenose dolphin (*Tursiops truncatus*) presence and incidental capture in a marine fish farm on the north-eastern coast of Sardinia (Italy). *Journal of the Marine Biological Association of the United Kingdom* **87**, 113–117.
- Di Tullio JC, Fruet PF and Secchi ER (2016) Identifying critical areas to reduce bycatch of coastal common bottlenose dolphins *Tursiops truncatus* in artisanal fisheries of the subtropical western South Atlantic. *Endangered Species Research* **29**, 35–50.
- Doherty PD, Alfaro-Shigueto J, Hodgson DJ, Mangel JC, Witt MJ and Godley BJ (2014) Big catch, little sharks: insight into Peruvian small-scale longline fisheries. *Ecology and Evolution* **4**, 2375–2383.
- Dunn DC, Jablonicky C, Crespo GO, McCauley DJ, Kroodsma DA, Boerder K, Gjerde KM and Halpin PN (2018) Empowering high seas governance with satellite vessel tracking data. *Fish and Fisheries* **19**, 729–739.
- Frair JL, Fieberg J, Hebblewhite M, Cagnacci F, DeCesare NJ and Pedrotti Luca (2010) Resolving issues of imprecise and habitat-biased locations in ecological analyses using GPS telemetry dataPhil. *Philosophical Transactions of the Royal Society B: Biological Sciences* **365**, 2187–2200. <https://doi.org/10.1098/rstb.2010.0084>
- European Union (2014) Regulation (EU) No 508/2014 of the European Parliament and of the Council of 15 May 2014 on the European Maritime and Fisheries Fund. *Official Journal L* **149**, 1–66.
- FAO (2008) *Fishery Country Profile – Turkey. FID/CP/TUR*. Available at https://www.fao.org/fishery/docs/DOCUMENT/fcp/en/FL_CP_TR.pdf?fbclid=IwAR18zAiYFu-vIjnAx1iEOEcixZhWl6ZKRYiimVhKefpNoDwj3bKKZnWo.
- FAO (2018) *The State of World Fisheries and Aquaculture 2018 – Meeting the Sustainable Development Goals*. Rome, Italy: Food and Agriculture Organization of the United Nations.
- FAO – AdriaMed (2006) *Country Fishery Information: MONTENEGRO*. Rome, Italy: FAO – AdriaMed.
- FAO – AdriaMed (2009) *Country Fishery Information: ALBANIA*. Rome, Italy: FAO – AdriaMed.
- Fonda-Umani S (1996) Pelagic production and biomass in the Adriatic Sea. *Scientia Marina* **60**, 65–77.
- Forcada J, Hammond PS and Aguilar A (1999) Status of the Mediterranean monk seal *Monachus monachus* in the western Sahara and the implications of a mass mortality event. *Marine Ecology Progress Series* **188**, 249–261.
- Fossa F, Lammers MO and Orsi Relini L (2011) Measuring interaction between common bottlenose dolphin, common bottlenose dolphin (*Tursiops truncatus*) and artisanal fisheries in Ligurian sea. *Biologia Marina Mediterranea* **18**, 182–183.
- Gazo M, Gonzalvo J and Aguilar A (2008) Pingers as deterrents of bottlenose dolphins interacting with trammel nets. *Fisheries Research* **92**, 70–75.
- Geijer CKA and Jones PJS (2015) A network approach to migratory whale conservation: are MPAs the way forward or do all roads lead to the IMO? *Marine Policy* **51**, 1–12.
- Geijer CKA and Read AJ (2013) Mitigation of marine mammal bycatch in U.S. fisheries since 1994. *Biological Conservation* **159**, 54–60.
- The General Fisheries Commission for the Mediterranean (2009) *Establishment of Geographical Sub-Areas in the GFCM Area Amending the Resolution GFCM/31/2007/2*. Rome, Italy: The General Fisheries Commission for the Mediterranean.
- Goetz S, Read FL, Ferreira M, Portela JM, Santos MB, Vingada J, Siebert U, Marçalo A, Santos J, Araújo H, Monteiro S, Caldas M, Riera M and Pierce GJ (2015) Cetacean occurrence, habitat preferences and potential for cetacean–fishery interactions in Iberian Atlantic waters: results from cooperative research involving local stakeholders. *Aquatic Conservation: Marine and Freshwater Ecosystems* **25**, 138–154.
- Gomerčić MD, Galov A, Gomerčić T, Škrtić D, Ćurković S, Lucić H, Vuković S, Arbanasić H and Gomerčić H (2009) Bottlenose dolphin

- (*Tursiops truncatus*) depredation resulting in larynx strangulation with gillnet parts. *Marine Mammal Science* **25**, 392–401.
- Gönener S and Özdemir S** (2012) Investigation of the interaction between bottom gillnet fishery (Sinop, Black Sea) and bottlenose dolphins (*Tursiops truncatus*) in terms of economy. *Turkish Journal of Fisheries and Aquatic Sciences* **12**, 115–126.
- González LM and De Larrinoa PF** (2013) Mediterranean monk seal *Monachus monachus* distribution and fisheries interactions in the Atlantic Sahara during the second half of the 20th century. *Mammalia* **77**, 41–49.
- Gonzalvo J, Forcada J, Grau E and Aguilar A** (2014) Strong site-fidelity increases vulnerability of common bottlenose dolphins *Tursiops truncatus* in a mass tourism destination in the western Mediterranean Sea. *Journal of the Marine Biological Association of the United Kingdom* **94**, 1227–1235.
- Gonzalvo J, Giovos I and Moutopoulos DK** (2015) Fishermen's perception on the sustainability of small-scale fisheries and dolphin-fisheries interactions in two increasingly fragile coastal ecosystems in western Greece. *Aquatic Conservation: Marine and Freshwater Ecosystems* **25**, 91–106.
- Güçlüsoy H** (2008a) Damage by monk seals to gear of the artisanal fishery in the Foça Monk Seal Pilot Conservation Area, Turkey. *Fisheries Research* **90**, 70–77.
- Güçlüsoy H** (2008b) Interaction between monk seals, *Monachus monachus* (Hermann, 1779), and artisanal fisheries in the Foça Pilot Monk Seal Conservation Area, Turkey. *Zoology in the Middle East* **43**, 13–20.
- Hamer DJ, Goldsworthy SD, Costa DP, Fowler SL, Page B and Sumner MD** (2013) The endangered Australian sea lion extensively overlaps with and regularly becomes by-catch in demersal shark gill-nets in South Australian shelf waters. *Biological Conservation* **157**, 386–400.
- Heppell SS, Caswell H and Crowder LB** (2000) Life histories and elasticity patterns: perturbation analysis for species with minimal demographic data. *Ecology* **81**, 654–665.
- IUCN** (2012) *Marine Mammals and Sea Turtles of the Mediterranean and Black Seas*. Gland, Switzerland and Malaga, Spain: IUCN.
- Jaramillo-Legorreta A, Rojas-Bracho L, Brownell RL, Read AJ, Reeves RR, Ralls K and Taylor BL** (2007) Saving the vaquita: immediate action, not more data. *Conservation Biology* **21**, 1653–1655.
- Karamanlidis AA, Adamantopoulou S, Kallianiotis AA, Tounta E and Dendrinis P** (2020) An interview-based approach assessing interactions between seals and small-scale fisheries informs the conservation strategy of the endangered Mediterranean monk seal. *Aquatic Conservation: Marine and Freshwater Ecosystems* **30**, 928–936.
- Karamanlidis AA, Androukaki E, Adamantopoulou S, Chatzisprou A, Johnson WM, Kotomatas S, Papadopoulos A, Paravas V, Paximadis G, Pires R, Tounta E and Dendrinis P** (2008) Assessing accidental entanglement as a threat to the Mediterranean monk seal *Monachus monachus*. *Endangered Species Research* **5**, 205–213.
- Karamanlidis AA and Dendrinis P** (2015) *Monachus monachus*. In *The IUCN Red List of Threatened Species*. Available at <https://doi.org/10.2305/IUCN.UK.2015-4.RLTS.T13653A45227543.en>.
- Karamanlidis AA, Dendrinis P, de Larrinoa PF, Gücü AC, Johnson WM, Kırac CO and Pires R** (2016) The Mediterranean monk seal *Monachus monachus*: status, biology, threats, and conservation priorities. *Mammal Review* **46**, 92–105.
- Kerem D, Hadar N, Goffman O, Scheinin A, Kent R, Boisseau O and Schattner U** (2012) Update on the Cetacean Fauna of the Mediterranean Levantine Basin. *The Open Marine Biology Journal* **6**, 6–27.
- Kırac CO, Savas Y, Güçlüsoy H and Ververi NO** (2002) Observations on diving behaviour of free ranging Mediterranean monk seals *Monachus monachus* on Turkish coasts. *Monachus Science* **5**.
- Knowlton AR, Robbins J, Landry S, McKenna HA, Kraus SD and Werner TB** (2016) Effects of fishing rope strength on the severity of large whale entanglements. *Conservation Biology* **30**, 318–328.
- Lauriano G, Caramanna L, Scarnó M and Andaloro F** (2009) An overview of dolphin depredation in Italian artisanal fisheries. *Journal of the Marine Biological Association of the United Kingdom* **89**, 921–929.
- Lauriano G, Fortuna CM, Moltedo G and Notarbartolo di Sciarra G** (2004) Interactions between common bottlenose dolphins (*Tursiops truncatus*) and the artisanal fishery in Asinara Island National Park (Sardinia): assessment of catch damage and economic loss. *Journal of Cetacean Research and Management* **6**, 165–173.
- Lauriano G, Pierantonio N, Donovan G and Panigada S** (2014) Abundance and distribution of *Tursiops truncatus* in the Western Mediterranean Sea: an assessment towards the Marine Strategy Framework Directive requirements. *Marine Environmental Research* **100**, 86–93.
- Lucchetti A, Pulcinella J, Angelini V, Pari S, Russo T and Cataudella S** (2016) An interaction index to predict turtle bycatch in a Mediterranean bottom trawl fishery. *Ecological Indicators* **60**, 557–564.
- Mangel JC, Alfaro-shigueto J, Van Waerebeek K, Cáceres C, Bearhop S, Witt MJ and Godley BJ** (2010) Small cetacean captures in Peruvian artisanal fisheries: high despite protective legislation. *Biological Conservation* **143**, 136–143.
- Mannocci L, Roberts JJ, Halpin PN, Authier M, Boisseau O, Bradai MN, Canadas A, Chicote C, David L, Di-Méglio N, Fortuna CM, Frantzi A, Gazo M, Genov T, Hammond PS, Holcer D, Kaschner K, Kerem D, Lauriano G, Lewis T, Notarbartolo Di Sciarra G, Panigada S, Raga JA, Scheinin A, Ridoux V, Vella A and Vella J** (2018) Assessing cetacean surveys throughout the Mediterranean Sea: a gap analysis in environmental space. *Scientific Reports* **8**, 1–14.
- Marcalo A, Katara I, Feijo D, Araujo H, Oliveira I, Santos J, Ferreira M, Monteiro S, Pierce GJ, Silva A and Vingada J** (2015) Quantification of interactions between the Portuguese sardine purse-seine fishery and cetaceans. *ICES Journal of Marine Science* **72**, 2438–2449.
- Marine Conservation Research** (2019) *Logger 2010*. Essex, UK: Marine Conservation Research.
- Medley PA, Gaudian G and Wells S** (1993) Coral reef fisheries stock assessment. *Reviews in Fish Biology and Fisheries* **3**, 242–285.
- Merchant ND, Pirotta E, Barton TR and Thompson PM** (2014) Monitoring ship noise to assess the impact of coastal developments on marine mammals. *Marine Pollution Bulletin* **78**, 85–95.
- Metcalfe K, Collins T, Abernethy KE, Boumba R, Dengui JC, Miyalou R, Parnell RJ, Plummer KE, Russell DJF, Safou GK, Tilley D, Turner RA, VanLeeuwe H, Witt MJ and Godley BJ** (2017) Addressing uncertainty in marine resource management; combining community engagement and tracking technology to characterize human behavior. *Conservation Letters* **10**, 459–468.
- Ministry of Agriculture and Rural Development** (2015) *Fisheries Strategy of Montenegro 2015–2020 with an Action Plan*. Montenegro: Ministry of Agriculture and Rural Development.
- Moore JE, Cox TM, Lewison RL, Read AJ, Bjorkland R, McDonald SL, Crowder LB, Aruna E, Ayissi I, Espeut P, Joynson-hicks C, Pilcher N, Poonian CNS, Solarin B and Kiszka J** (2010) An interview-based approach to assess marine mammal and sea turtle captures in artisanal fisheries. *Biological Conservation* **143**, 795–805.
- Morand P and Briand X** (1996) Excessive growth of macroalgae: a symptom of environmental disturbance. *Botanica Marina* **39**, 491–516.
- Morris G and Conner LM** (2017) Assessment of accuracy, fix success rate, and use of estimated horizontal position error (EHPE) to filter inaccurate data collected by a common commercially available GPS logger. *PLoS ONE* **12**, 1–12.
- Notarbartolo di Sciarra G and Bearzi G** (2002) Cetacean direct killing and live capture in the Mediterranean Sea. In: Notarbartolo di Sciarra G (ed), *Cetaceans of the Mediterranean and Black Seas: state of knowledge and conservation strategies*. A report to the ACCOBAMS Secretariat, Monaco, February 2002. Section 5, 4 p.
- Notarbartolo di Sciarra G and Birkun A** (2010) *Conserving Whales, Dolphins and Porpoises in the Mediterranean and Black Seas: An ACCOBAMS Status Report*. Monaco: ACCOBAMS.
- OECD** (2021) *Review of Fisheries 2020 – Fisheries and Aquaculture in Turkey*. Paris, France: OECD.
- Özbek EÖ, Kebapç T and Çardak M** (2015) Spatio-temporal patterns of abundance, biomass and length-weight relationship of white grouper, *Epinephelus aeneus* (Geoffroy Saint-Hilaire, 1817) (Pisces: Serranidae) in the Gulf of Antalya, Turkey (Levantine Sea). *Journal of Black Sea/Mediterranean Environment* **19**, 23–45.
- Palka DL and Rossman MC** (2001) *Bycatch Estimates of Coastal Bottlenose in U. S. Mid-Atlantic Gillnet Fisheries for 1996 to 2000*. Northeast Fisheries Science Center Reference (Vol. 01–15). Woods Hole, MA, USA: National Marine Fisheries Service.
- Pennino MG, Pérez Roda MA, Pierce GJ and Rotta A** (2016) Effects of vessel traffic on relative abundance and behaviour of cetaceans: the case of the bottlenose dolphins in the Archipelago de La Maddalena, north-western Mediterranean Sea. *Hydrobiologia* **776**, 237–248.
- Read AJ** (2008) The looming crisis: interactions between marine mammals and fisheries. *Journal of Mammalogy* **89**, 541–548.
- Read AJ, Drinker P and Northridge S** (2006) Bycatch of marine mammals in U.S. and global fisheries. *Conservation Biology* **20**, 163–169.

- Reeves RR, McClellan K and Werner TB (2013) Marine mammal bycatch in gillnet and other entangling net fisheries, 1990 to 2011. *Endangered Species Research* **20**, 71–97.
- Revuelta O, Domènech F, Fraija-Fernández N, Gozalbes P, Novillo O, Penadés-Suay J and Tomás J (2018) Interaction between bottlenose dolphins (*Tursiops truncatus*) and artisanal fisheries in the Valencia region (Spanish Mediterranean Sea). *Ocean and Coastal Management* **165**, 117–125.
- Ríos N, Drakulic M, Paradinas I, Milliou A and Cox R (2017) Occurrence and impact of interactions between small-scale fisheries and predators, with focus on Mediterranean monk seals (*Monachus monachus* Hermann 1779), around Lipsi Island complex, Aegean Sea, Greece. *Fisheries Research* **187**, 1–10.
- Rocklin D, Santoni MC, Culioli JM, Tomasini JA, Pelletier D and Mouillot D (2009) Changes in the catch composition of artisanal fisheries attributable to dolphin depredation in a Mediterranean marine reserve. *ICES Journal of Marine Science* **66**, 699–707.
- Roe JH, Morreale SJ, Paladino FV, Shillinger GL, Benson SR, Eckert SA, Bailey H, Tomillo PS, Bograd SJ, Eguchi T, Dutton PH, Seminoff JA, Block BA and Spotila JR (2014) Predicting bycatch hotspots for endangered leatherback turtles on longlines in the Pacific Ocean. *Proceedings of the Royal Society B: Biological Sciences* **281**, 20132559.
- Rudd LE, Awbery T, Waller R, Crowe M, Bauer J, Jacquemart A, Nikpaljevic N and Akkaya A (2022) The effect of commercial and artisanal fishing practices on the behavioral budget of bottlenose dolphins off the coast of Montenegro, South Adriatic Sea. *Marine Mammal Science* **38**, 990–1006.
- Russo T, D'Andrea L, Parisi A and Cataudella S (2014) VMSbase: an R-Package for VMS and logbook data management and analysis in fisheries ecology. *PLoS ONE* **9**, e100195.
- Sini M, Vatikiotis K, Thanopoulou Z, Katsoupis C, Maina I, Kavadas S, Karachle PK and Katsanevakis S (2019) Small-scale coastal fishing shapes the structure of shallow rocky reef fish in the Aegean Sea. *Frontiers in Marine Science* **6**, 1–15.
- Snape RTE (2019) *Investigating Conflict between Threatened Marine Megavertebrates and Mediterranean Small-Scale Fisheries*. Exeter, UK: University of Exeter. Available at <http://hdl.handle.net/10871/36636>.
- Snape RTE, Broderick AC, Çiçek BA, Fuller WJ, Tregenza N, Witt MJ and Godley BJ (2018) Conflict between dolphins and a data-scarce fishery of the European Union. *Human Ecology* **46**, 423–433.
- Soykan CU, Moore JE, Crowder LB, Safina C and Lewison RL (2008) Why study bycatch? An introduction to the Theme Section on fisheries bycatch. *Endangered Species Research* **5**, 91–102.
- Tew Kai E, Benhamou S, van der Lingen CD, Coetzee JC, Pichegru L, Ryan PG and Grémillet D (2013) Are Cape gannets dependent upon fishery waste? A multi-scale analysis using seabird GPS-tracking, hydro-acoustic surveys of pelagic fish and vessel monitoring systems. *Journal of Applied Ecology* **50**, 659–670.
- Tezcan D and Okyar M (2006) Seismic stratigraphy of Late Quaternary deposits on the continental shelf of Antalya Bay, Northeastern Mediterranean. *Continental Shelf Research* **26**, 1595–1616.
- Vanderlaan ASM, Taggart CT, Serdynska AR, Kenney RD and Brown MW (2008) Reducing the risk of lethal encounters: vessels and right whales in the Bay of Fundy and on the Scotian shelf. *Endangered Species Research* **4**, 283–297.
- Wallace BP, Heppell SS, Lewison RL, Kelez S and Crowder LB (2008) Impacts of fisheries bycatch on loggerhead turtles worldwide inferred from reproductive value analyses. *Journal of Applied Ecology* **45**, 1076–1085.
- Witt MJ and Godley BJ (2007) A step towards seascape scale conservation: using vessel monitoring systems (VMS) to map fishing activity. *PLoS ONE* **2**, e1111.
- Yılmaz S, Akay AS and Gumus E (2008) Fisheries sector in Turkish economy and marketing of fishery products. *Akdeniz Üniversitesi Ziraat Fakültesi Dergisi* **21**, 265–272.
- Zappes CA, Simões-Lopes PC, Andriolo A and Di Benedetto APM (2016) Traditional knowledge identifies causes of bycatch on bottlenose dolphins (*Tursiops truncatus* Montagu 1821): an ethnobiological approach. *Ocean and Coastal Management* **120**, 160–169.