

Bedside Containers

To the Editor:

I am calling on your expertise to resolve a problem existing in a few long-term care facilities in the Los Angeles area: some directors of nursing and administrators (very few) have resisted sanitizing bedside water containers on a daily basis. Their schedule ranges from three times weekly to weekly. I have not been able to determine a schedule from CDC guidelines but concur with most directors of nursing, administrators, and infection control committees of skilled nursing facilities that the minimum acceptable sanitizing is once daily.

Infection Control is the bible in all skilled nursing facilities with which I am associated as medical director or utilization review chairman.

Harry J. Silver, MD
Los Angeles, California

Ms. Sue Crow, nurse epidemiologist, responds to Dr. Silver's letter:

When making decisions related to infection control, consider whether or not the procedure will affect a sterile area of the body. If so, strict sterile technique is necessary. If the procedure involves an area such as the GI tract, clean technique only is necessary. Regarding water pitchers, there are no studies implicating these items as a source of nosocomial infection. Because the contents will enter the GI tract, I am not so sure it is important to clean the water pitchers daily. Obviously, if the pitchers are dirty, they need cleaning. I have no problem suggesting cleaning them three times weekly or even weekly. More important is that patients receive the same water pitcher after cleaning. I continue to note this problem in hospitals and nursing homes and suggest labeling water pitchers so this mismatch

will not occur. Reusable water pitchers should receive, at minimum, high-level disinfection before being used by other patients.

At our hospital we clean water pitchers either when they become soiled or on a weekly basis, with no apparent risk.

Sue Crow, MSN, RN, CIC
Nurse Epidemiologist
Louisiana State University Medical Center
Shreveport, Louisiana

Letters to the Editor should be addressed to INFECTION CONTROL Editorial Offices C41 General Hospital, University of Iowa Hospitals and Clinics, Iowa City, IA 52242. All letters must be typed, double spaced, and may not exceed four pages nor include more than one figure or table. The editors reserve the right to edit for purposes of clarity or brevity.

LIMITED EDITION

Prints from the Original Oils of Award Winning Artist

H.T. BECKER

Old Town

Image Size 15 x 23

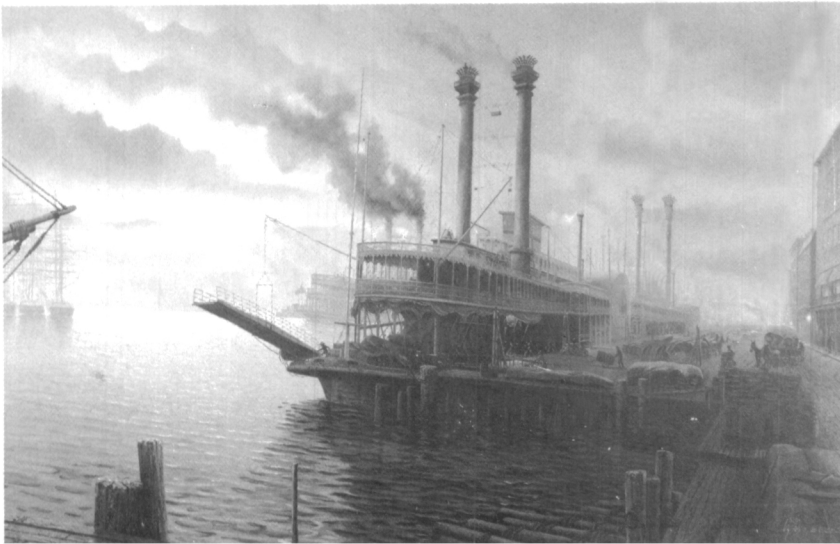
Print Only	\$72.00
Framed	\$174.00



By The Levee

Image Size 15 x 23

Print Only	\$72.00
Framed	\$174.00



H. T. Becker's work is perceptive and clear. He uses luminescent techniques that seem to spread a diffused light over the surface of the painting. This combined with the realism in which his work is created evokes a haunting quality. Mr. Becker has won numerous awards and his works are in public and private collections nationally and abroad. Editions limited to 950 signed and numbered by the artist. Printed in full color.

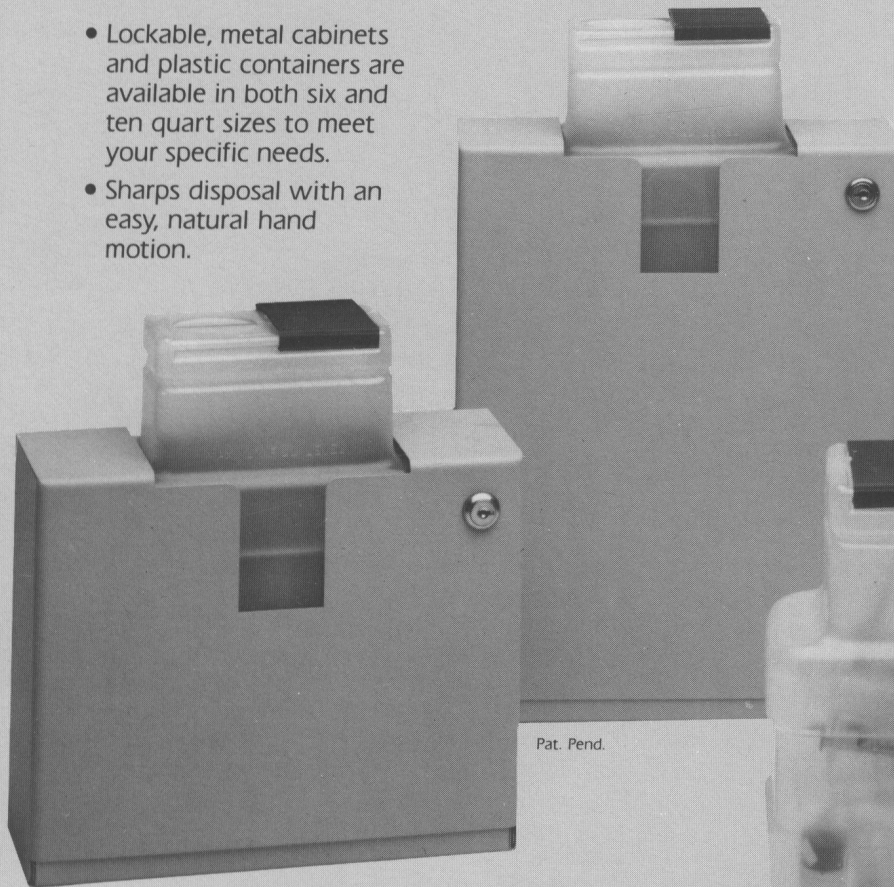
To order, please send your check or money order to:
First Impressions, 6900 Grove Road, Thorofare, New Jersey 08086
(N.J. residents add 6% sales tax.)

POST—

The Ultimate In-Room Sharps Containment System

The Answer to your Sharps Disposal Problem—an in room system with a vertical drop. The proven effective, efficient way to avoid sticks.

- Lockable, metal cabinets and plastic containers are available in both six and ten quart sizes to meet your specific needs.
- Sharps disposal with an easy, natural hand motion.

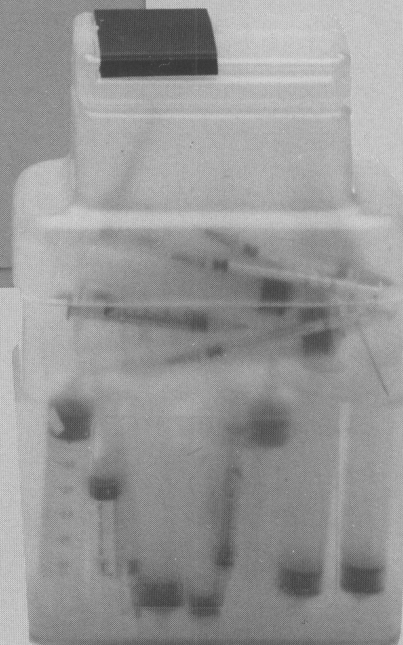


- Snap-tight locking top prevents accidents.
- Sharps disposal in the patients' room means NO RECAPPING. Safe, immediate disposal.
- No tabs or doors to manipulate before disposal. Easy-use, one-hand disposal, combined with VERTICAL DROP means maximum safety.

Don't Evaluate Without POST!

Sample safety cabinet and plastic insert are available for evaluation. Send the enclosed form, or call today.

NAME _____
TITLE _____
HOSPITAL _____
ADDRESS _____
CITY _____ STATE _____ ZIP _____
PHONE () _____ EXT _____



POST MEDICAL INC.

PO Box 772 Neptune, NJ 07754-0772
Tel: (800) 221-0535 NJ: (201) 774-5466
Fax: (201) 774-7287