

## CORRIGENDUM

# Film deposition and transition on a partially wetting plate in dip coating – CORRIGENDUM

Peng Gao, Lei Li, James J. Feng, Hang Ding and Xi-Yun Lu

doi:10.1017/jfm.2016.64, Published by Cambridge University Press,  
22 February 2016

Figure 5 of the published paper should be replaced by the figure shown below. The comparison between Figures 5 and 6 illustrates the important distinction between regimes II and III, with the formation of a Landau–Levich–Derjaguin film (figure 6) once the capillary number is sufficiently large.

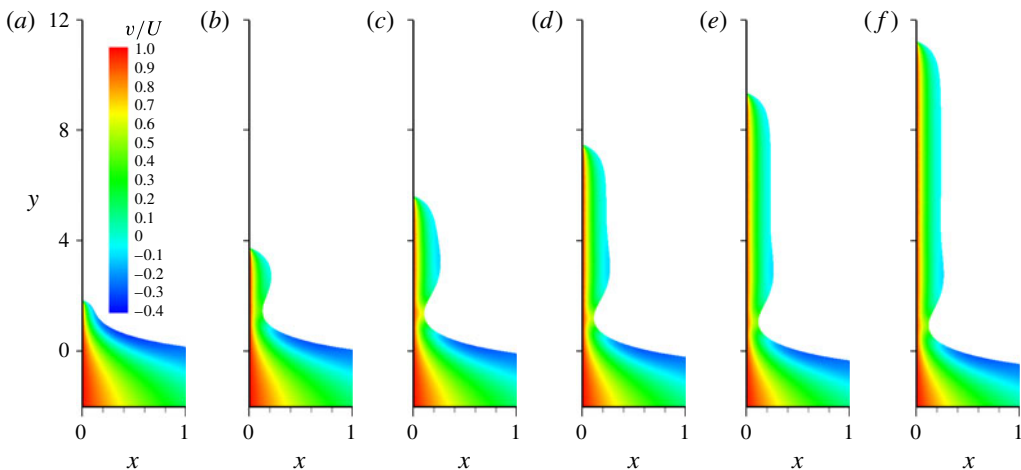


FIGURE 5. (Colour online) (Corrected) Time evolution of the interface for  $Ca = 0.029$  in regime II. (a) Corresponds to  $t = 200$ , and the time difference between successive panels is  $\Delta t = 200$ , where time is scaled by  $\mu_1 \ell_c / \sigma$  and the same dimensionless time is used in the following figures. The lower fluid is coloured by the value of the vertical velocity  $v/U$  to indicate the gravity-driven flow. The flow in the upper fluid is not shown for clarity.

### REFERENCE

GAO, P., LI, L., FENG, J. J., DING, H. & LU, X.-Y. 2016 Film deposition and transition on a partially wetting plate in dip coating. *J. Fluid Mech.* **791**, 358–383.