



Effects of buoyancy on the dispersion of drugs released intrathecally in the spinal canal

J. Alaminos-Quesada^{1,†}, C. Gutiérrez-Montes^{2,3}, W. Coenen⁴
and A.L. Sánchez¹

¹Department of Mechanical and Aerospace Engineering, University of California San Diego, La Jolla, CA, 92093-0411, USA

²Department of Mechanical and Mining Engineering, University of Jaén, Jaén, 23071, Spain

³Andalusian Institute for Earth System Research, University of Jaén, Campus de las Lagunillas, Jaén, 23071, Spain

⁴Grupo de Mecánica de Fluidos, Departamento de Ingeniería Térmica y de Fluidos, Universidad Carlos III de Madrid, Leganés, 28911, Spain

(Received 27 November 2023; revised 21 February 2024; accepted 21 March 2024)

This paper investigates the transport of drugs delivered by direct injection into the cerebrospinal fluid (CSF) that fills the intrathecal space surrounding the spinal cord. Because of the small drug diffusivity, the dispersion of neutrally buoyant drugs has been shown in previous work to rely mainly on the mean Lagrangian flow associated with the CSF oscillatory motion. Attention is given here to effects of buoyancy, arising when the drug density differs from the CSF density. For the typical density differences found in applications, the associated Richardson number is shown to be of order unity, so that the Lagrangian drift includes a buoyancy-induced component that depends on the spatial distribution of the drug, resulting in a slowly evolving cycle-averaged flow problem that can be analysed with two-time scale methods. The asymptotic analysis leads to a nonlinear integro-differential equation for the spatiotemporal solute evolution that describes accurately drug dispersion at a fraction of the cost involved in direct numerical simulations of the oscillatory flow. The model equation is used to predict drug dispersion of positively and negatively buoyant drugs in an anatomically correct spinal canal, with separate attention given to drug delivery via bolus injection and constant infusion.

Key words: biomedical flows

† Email address for correspondence: jalaminosquesada@ucsd.edu

1. Introduction

The subarachnoid space (SAS) surrounding the spinal cord is filled with cerebrospinal fluid (CSF), a colourless Newtonian fluid whose density ρ and kinematic viscosity ν are very similar to those of water. The CSF moves in response to the cyclic pressure variations induced by the blood pulsations in the cranial cavity and to the abdominal pressure variations associated with the respiratory cycle (Linninger *et al.* 2016; Kelley & Thomas 2023). CSF motion plays a fundamental role in the physiological function of CSF as a vehicle for the transport of hormones, nutrients and neuroendocrine substances (Greitz, Franck & Nordell 1993; Greitz & Hannerz 1996; Pollay 2010), and also facilitates the dispersion of drugs delivered by direct injection into the SAS (Hettiarachchi *et al.* 2011). This medical procedure, known as intrathecal drug delivery (ITDD), has been used since the early 1980s to bypass the blood–brain barrier, facilitating the administration of analgesics, chemotherapy and enzymes to the central nervous system (Onofrio, Yaksh & Arnold 1981; Greene 1985; Calias *et al.* 2012; Patel *et al.* 2012; Remeš *et al.* 2013; Bottros & Christo 2014; Lynch 2014; Lee *et al.* 2017; Tangen *et al.* 2019; Fowler *et al.* 2020; De Andres *et al.* 2022). Standard ITDD protocols involve either the continuous pumping of the drug through a small catheter or the administration of a finite dose at selected times (Bottros & Christo 2014; Fowler *et al.* 2020; De Andres *et al.* 2022), with drug delivery commonly taking place in the lumbar region, as shown in the schematic of figure 1(a). Analgesic delivery via ITDD usually targets sites along the spinal cord close to the injection location, so that reduced drug dispersion is desired, while for other patients there is interest in rapid dispersion towards the cranial cavity, that being the case of intrathecal chemotherapy for brain tumours.

Although ITDD is used with satisfactory results, efforts to optimize the delivery protocol are hindered by the lack of an accurate methodology for predicting drug delivery rates to targeted locations, which sometimes results in unexpected over-dosing and under-dosing complications (Buchser *et al.* 2004; Wallace & Yaksh 2012) that cannot be explained by existing pharmacokinetics knowledge (Kamran & Wright 2001; Pardridge 2011). The development of predictive models necessitates improved understanding of the interacting convective and diffusive mechanisms controlling the transport of the drug. The present paper, complementing previous computational (Myers 1996; Kuttler *et al.* 2010; Hsu *et al.* 2012; Tangen *et al.* 2015, 2017; Haga *et al.* 2017; Khani *et al.* 2018, 2022; Gutiérrez-Montes *et al.* 2021), experimental (Hettiarachchi *et al.* 2011; Khani *et al.* 2022; Seiner *et al.* 2022; Ayansiji *et al.* 2023; Moral-Pulido *et al.* 2023) and theoretical (Sánchez *et al.* 2018; Lawrence *et al.* 2019) efforts, seeks to contribute to the needed understanding by analysing effects of buoyancy, which are known by clinicians to play an important role in the dispersion rate of ITDD drugs for patients in an upright or sitting position (Chambers, Edstrom & Scott 1981; Wildsmith *et al.* 1981; Greene 1985; Hocking & Wildsmith 2004; De Andres *et al.* 2022). Asymptotic methods based on the disparity of length and time scales present in the problem will be used to derive a reduced transport equation for the drug, enabling accurate predictions of drug dispersion at a fraction of the computational cost associated with direct numerical simulations.

The rest of the paper is organized as follows. After reviewing in § 2 the main features of the flow in the spinal canal, the problem of solute dispersion in the presence of buoyancy forces is formulated in § 3. The asymptotic development leading to the reduced transport equation describing drug dispersion is presented next in § 4. The simplified model is used in § 5 to compute dispersion of positively and negatively buoyant solutes in geometrically simple models of the spinal canal. The results are validated by comparisons with direct numerical simulations, similar to those performed earlier in connection with neutrally

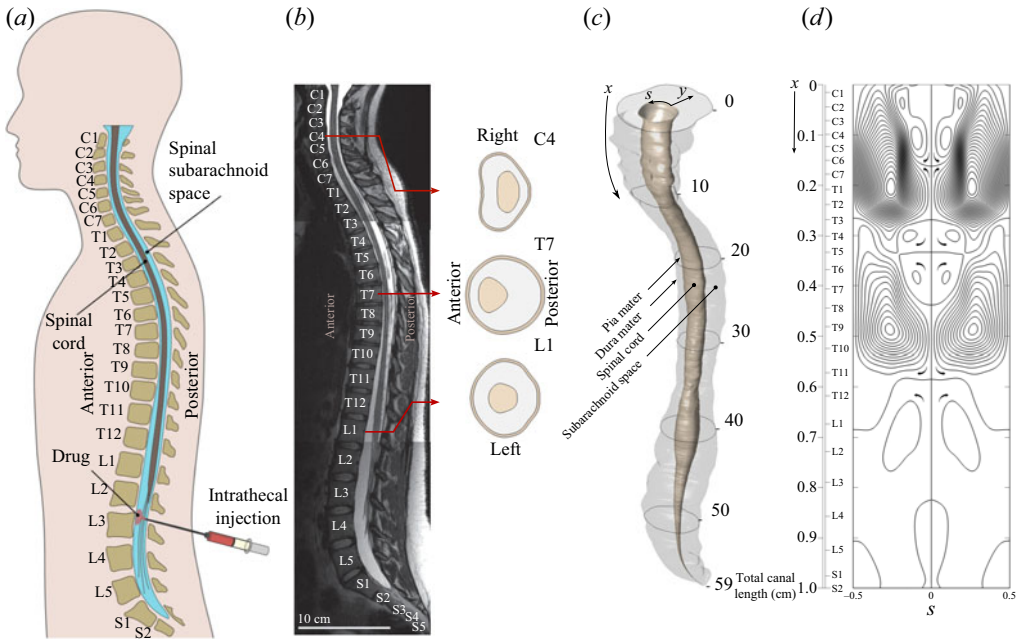


Figure 1. The spinal canal. (a) A schematic showing the typical intrathecal injection location. (b) Sagittal T2-weighted magnetic resonance (MR) image of the spine in a subject in the supine position, including cross-sectional views at three different locations. (c) Transversely stretched three-dimensional view of the spinal canal obtained after Gaussian smoothing the MR images, with an indication of the bounding surfaces and the dimensionless coordinate system used in the model derivation. (d) Streamlines of the Lagrangian flow projected onto the dimensionless plane $x-s$ (see § 6).

buoyant solutes (Gutiérrez-Montes *et al.* 2021). Computations accounting for anatomically correct spinal canals are presented next, with separate consideration given to drug delivery via bolus injection (§ 6) and constant infusion (§ 7), the latter analysis involving a localized solute source with a rescaled effective Richardson number. Finally, concluding remarks are given in § 8.

2. Flow and transport in the spinal canal

The SAS surrounding the spinal cord can be described in the first approximation as a thin annular channel whose characteristic width $h_c \sim 0.1\text{--}0.4$ cm that is much smaller than the characteristic spinal cord perimeter $\ell_c \sim 2\text{--}3$ cm, which in turn is much smaller than the spine length $L \sim 60$ cm, so that the canal dimensions satisfy the inequalities $L \gg \ell_c \gg h_c$. The CSF moves along the canal with an oscillatory velocity that is synchronized with the cardiac and respiratory cycles. The CSF oscillatory flow is more pronounced near the canal entrance, where the characteristic velocities u_c are of the order of a few cm s^{-1} , but become progressively smaller on approaching the closed end of the canal, as revealed by *in vivo* magnetic resonance measurements (Haughton & Mardal 2014; Aktas *et al.* 2019; Coenen *et al.* 2019; Sincomb *et al.* 2022). The following analysis focuses specifically on the flow induced by the cardiac cycle, corresponding to angular frequencies $\omega \simeq 2\pi \text{ s}^{-1}$ and characteristic stroke lengths $L_s = u_c/\omega \sim 1$ cm that are much smaller than the canal length L .

The motion in the spinal canal is viscous, in that the characteristic viscous time across the canal h_c^2/ν based on the CSF kinematic viscosity $\nu \simeq 0.7 \times 10^{-3} \text{ cm}^2 \text{ s}^{-1}$ is comparable to – although somewhat larger than – the characteristic flow oscillation time ω^{-1} , resulting in order-unity values $3 \lesssim \alpha \lesssim 12$ of the Womersley number $\alpha = (h_c^2\omega/\nu)^{1/2}$. By way of contrast, effects of inertia associated with convective acceleration are very limited, as measured by the relevant Strouhal number $\omega L/u_c = L/L_s \gg 1$, the inverse of which defines an asymptotically small parameter $\varepsilon \sim L_s/L \simeq 0.02\text{--}0.04$. Thus, in the first approximation, the motion in the slender spinal canal is given by a balance between the pressure gradient, the local acceleration and the viscous forces. The resulting linear unsteady lubrication problem can be solved to give closed-form expressions for the leading-order oscillatory velocity (Sánchez *et al.* 2018; Lawrence *et al.* 2019), whose time-averaged value is identically zero. Corrections to this solution can be obtained by extending the asymptotic analysis to higher orders in $\varepsilon \ll 1$ (Sánchez *et al.* 2018; Lawrence *et al.* 2019). The first-order velocity corrections, of order εu_c , exhibit non-zero time-averaged values. This steady-streaming velocity, first identified in the seminal computational work of Kuttler *et al.* (2010), is due partly to the effect of convective acceleration and partly to the canal compliance (see e.g. Bhosale, Parthasarathy & Gazzola (2022a), Bhosale *et al.* (2022b) and Cui, Bhosale & Gazzola (2024) for recent analyses of steady-streaming flows stemming from boundary compliance). The associated residence times for the bulk flow in the canal $L/(\varepsilon u_c) = \varepsilon^{-2}\omega^{-1} \sim 30 \text{ min}$ are of the order of those observed in *in vivo* experiments employing radioactive tracers to mark the displacement of the CSF particles (Di Chiro 1964; Greitz & Hannerz 1996).

As shown by Lawrence *et al.* (2019), the disparity between the short time ω^{-1} characterizing the oscillatory velocity fluctuations and the residence time $\varepsilon^{-2}\omega^{-1}$ associated with the bulk motion can be used in deriving a simplified transport equation for the drug. The analysis revealed that shear-enhanced diffusion (Watson 1983), which is potentially important for solutes with order-unity values of the Schmidt number $S = \nu/\kappa$, is entirely negligible for the large Schmidt numbers $S \gg 1$ corresponding to the small molecular diffusivities κ of typical ITDD drugs (e.g. for methotrexate, $\kappa = 5.26 \times 10^{-10} \text{ m}^2 \text{ s}^{-1}$, yielding $S \simeq 1330$ for $\nu = 0.7 \times 10^{-6} \text{ m}^2 \text{ s}^{-1}$). The evolution of the drug concentration in the long time scale $\varepsilon^{-2}\omega^{-1}$ was found to be governed by a transport equation involving molecular diffusion across the width of the canal and convective transport driven by the time-averaged Lagrangian motion resulting from the combined effects of steady streaming and Stokes drift. The use of this simplified equation effectively circumvents the need to describe the small concentration fluctuations occurring in the short time scale ω^{-1} , thereby drastically reducing computational times. The accuracy and limitations of this time-averaged description have been tested recently by means of comparisons with results of direct numerical simulations spanning hundreds of oscillation cycles (Gutiérrez-Montes *et al.* 2021), as needed to generate significant dispersion of the solute. The comparisons demonstrate clearly the accuracy of the time-averaged description, which is seen to provide excellent fidelity at a fraction of the computational cost involved in the direct numerical simulations. The present investigation extends our previous analyses of flow and transport in the spinal canal by accounting for the effects of the small density differences between the drug and the CSF. The mathematical development parallels that employed recently in our analysis of buoyant Lagrangian drift in a vertical wavy-walled channel (Alaminos-Quesada *et al.* 2022).

Drug	ρ_d (g cm ⁻³)	$\frac{\rho - \rho_d}{\rho}$	$Ri_{\varepsilon=0.04}$	$Ri_{\varepsilon=0.02}$
Fentanyl (50 μg ml ⁻¹)	0.99320	7.386×10^{-3}	1.963	7.765
Droperidol (2.5 mg ml ⁻¹)	0.99440	6.186×10^{-3}	1.601	6.405
Midazolam (1 mg ml ⁻¹)	0.99970	0.889×10^{-3}	0.230	0.921
Lidocaine (20 mg ml ⁻¹)	0.99990	0.690×10^{-3}	0.178	0.714
Epinephrine (1 mg ml ⁻¹)	1.00050	0.090×10^{-3}	0.0236	0.093
Bupivacaine (10 mg ml ⁻¹)	1.00072	-0.130×10^{-3}	-0.033	-0.135
Lidocaine CO ₂ (20 mg ml ⁻¹)	1.00100	-0.410×10^{-3}	-0.106	-0.424
Morphine (10 mg ml ⁻¹)	1.00157	-0.979×10^{-3}	-0.254	-1.014
Meperidine (100 mg ml ⁻¹)	1.00830	-7.206×10^{-3}	-1.994	-7.98

Table 1. A few common intrathecal drugs, with their densities (Nicol & Holdcroft 1992; Lui *et al.* 1998; Hejtmanek *et al.* 2011) and associated Richardson numbers $Ri = [g(\rho - \rho_d)]/(\rho\varepsilon^2\omega^2L)$, the latter evaluated with $g = 9.81 \text{ m s}^{-2}$, $L = 0.6 \text{ m}$ and $\rho = 1.00059 \text{ g cm}^{-3}$ for two different values of the reduced stroke length ε .

3. Problem description

3.1. The Richardson number

As can be seen in table 1, the drug density ρ_d of common intrathecal drug solutions is very close to that of the CSF ($\rho = 1.00059 \text{ g cm}^{-3}$ at 37 °C) (Nicol & Holdcroft 1992; Lui, Polis & Cicutti 1998; McLeod 2004; Hejtmanek, Harvey & Bernards 2011; Lynch 2014). The drug density can be modified by adding different diluents such as saline, glucose and dextrose. Even though the resulting relative differences are very small (i.e. $10^{-4} \lesssim |\rho - \rho_d|/\rho \lesssim 10^{-2}$), the associated buoyancy forces affect in a fundamental way the dispersion of the drug. Thus it has been seen that for hyperbaric (i.e. dense) drugs, the transport of the drug is restricted when the patient is seated for some time before moving to a supine position (Mitchell *et al.* 1988; Povey, Jacobsen & Westergaard-Nielsen 1989; Veering *et al.* 2001; Loubert *et al.* 2011). Conversely, when a hypobaric (light) drug is injected, faster cephalic dispersion occurs in a seated injection position than in a lateral injection position (Richardson *et al.* 1996). As expected, the density of the drug is inconsequential when injection occurs in the lateral position (Hallworth, Fernando & Columb 2005) or when the solution density matches that of CSF (Wildsmith *et al.* 1981).

To anticipate how the presence of buoyancy forces modifies drug dispersion for patients in a sitting or upright position, it is useful to compare the characteristic value of the buoyancy-induced acceleration $g(\rho - \rho_d)/\rho$ with the characteristic value of the convective acceleration along the canal u_c^2/L , their ratio defining the relevant Richardson number:

$$Ri = \frac{g(\rho - \rho_d)/\rho}{u_c^2/L} = \frac{g(\rho - \rho_d)/\rho}{\varepsilon^2\omega^2L}. \tag{3.1}$$

Typical values of this number are evaluated in table 1 for a few common intrathecal drugs and two different values of the reduced stroke length ε . As can be seen, values of Ri of order unity characterize most situations of practical interest, so that in ITDD processes, buoyancy acceleration can be anticipated to be comparable to convective acceleration. As discussed previously, the motion of CSF at leading order is given by an unsteady lubrication balance involving the local acceleration and the viscous and pressure forces, with convective acceleration introducing small corrections of order ε , responsible for the steady-streaming motion. This leading-order balance is not altered in the relevant

limit $Ri \sim 1$ that applies to intrathecal drugs, in which the associated buoyancy-induced velocities are comparable to the steady-streaming velocities (and therefore a factor ε smaller than the pulsating velocities).

3.2. The model problem

The problem is formulated in dimensionless form using the scales and notation employed in the previous buoyancy-free analysis of Lawrence *et al.* (2019), which can be consulted for details of the derivation. Attention is focused on the motion driven by the periodic intracranial pressure fluctuations associated with the arterial blood flow, to be described for simplicity with the simple sinusoidal function $(\Delta p)_c \cos(\omega t')$, where $(\Delta p)_c$ is the fluctuation amplitude and $\omega \simeq 2\pi \text{ s}^{-1}$ is the angular frequency of the cardiac cycle, with t' representing the time. The spinal SAS is modelled as an annular canal bounded internally by the pia mater, surrounding the spinal cord, and externally by the dura membrane. The canal is compliant because of the presence of fatty tissue and venous blood. The displacement of the dura membrane at a given location is assumed to be equal to the product of the local pressure fluctuation and a compliance factor γ' that may vary along the canal. Its mean value γ'_c can be used to estimate the characteristic value of the dura displacement $\gamma'_c(\Delta p)_c$, which is much smaller than the canal width, with the ratio

$$\varepsilon = \frac{\gamma'_c(\Delta p)_c}{h_c} \sim \frac{L_s}{L} \tag{3.2}$$

defining the small asymptotic parameter representing the dimensionless stroke length.

As indicated in figure 1(c), the problem is described in terms of curvilinear coordinates, including the longitudinal distance to the canal entrance x (scaled with L), the transverse distance from the spinal cord y (scaled with the characteristic canal width h_c), and the azimuthal distance s (scaled with the local spinal cord perimeter, so that $0 \leq s \leq 1$). The corresponding streamwise, transverse and azimuthal velocity components (u, v, w) are scaled with their characteristic values $u_c = \varepsilon\omega L$, $v_c = \varepsilon\omega h_c$ and $w_c = \varepsilon\omega \ell_c$, the last two of which follow from continuity. The geometry of the canal is defined by the dimensionless unperturbed canal width $\bar{h}(x, s)$ (scaled with h_c) and spinal cord perimeter $\ell(x)$ (scaled with ℓ_c). The linear elastic equation for the canal takes the form

$$h' = \gamma(\cos t + k^2 p'), \tag{3.3}$$

where h' is the dura–membrane displacement (scaled with εh_c), $t = \omega t'$ is the dimensionless time, $p'(x, t)$ is the streamwise pressure variation (scaled with $\rho u_c \omega L$), $k = L\omega / [(h_c/\gamma'_c)/\rho]^{1/2}$ is a dimensionless elastic wavenumber, and $\gamma(x) = \gamma'/\gamma'_c$ is a dimensionless function describing the streamwise variation of the canal compliance.

3.3. Dimensionless formulation

In the thin-film approximation that applies in the limit $L \gg \ell_c \gg h_c$, the continuity, momentum and solute conservation equations take the simplified form

$$\frac{1}{\ell} \frac{\partial}{\partial x}(\ell u) + \frac{\partial v}{\partial y} + \frac{1}{\ell} \frac{\partial w}{\partial s} = 0, \tag{3.4}$$

$$\frac{\partial u}{\partial t} + \varepsilon \left[u \frac{\partial u}{\partial x} + v \frac{\partial u}{\partial y} + \frac{w}{\ell} \frac{\partial u}{\partial s} \right] = -\frac{\partial p'}{\partial x} + \frac{1}{\alpha^2} \frac{\partial^2 u}{\partial y^2} - \varepsilon Ri c, \quad (3.5)$$

$$\frac{\partial w}{\partial t} + \varepsilon \left[\frac{u}{\ell} \frac{\partial}{\partial x}(\ell w) + v \frac{\partial w}{\partial y} + \frac{w}{\ell} \frac{\partial w}{\partial s} \right] = -\frac{1}{\ell} \frac{\partial \hat{p}}{\partial s} + \frac{1}{\alpha^2} \frac{\partial^2 w}{\partial y^2}, \quad (3.6)$$

$$\frac{\partial c}{\partial t} + \varepsilon \left(u \frac{\partial c}{\partial x} + v \frac{\partial c}{\partial y} + \frac{w}{\ell} \frac{\partial c}{\partial s} \right) = \frac{\varepsilon^2}{\alpha^2 \sigma} \frac{\partial^2 c}{\partial y^2}, \quad (3.7)$$

where c is the drug concentration and \hat{p} is an auxiliary function describing the azimuthal pressure variations. The problem has been formulated using the Boussinesq approximation, as is appropriate for $|\rho - \rho_d| \ll \rho$. Since the spinal curvature is relatively small, for the case of a sitting patient considered here the streamwise coordinate x is practically aligned with the vertical direction, so that the component of the buoyancy force acting in the azimuthal direction is small, and has been correspondingly neglected in writing (3.6). With the definition (3.1), the Richardson number Ri measuring the buoyancy force in (3.5) is positive/negative when the drug is lighter/heavier than the CSF, buoyancy driving the drug upwards/downwards, in the negative/positive x direction. Following Lawrence *et al.* (2019), the diffusion term in (3.7) has been written in terms of the reduced Schmidt number $\sigma = \varepsilon^2 S$, assumed to be of order unity, as is consistent with the values $S \sim 2000$ and $\varepsilon \sim 0.02\text{--}0.04$ that characterize drug dispersion in the spinal canal.

The velocity satisfies the no-slip condition $u = v = w = 0$ at $y = 0$, and $u = v - \partial h' / \partial t = w = 0$ at $y = h$. Although drug uptake by the spinal nerve as well as through the dura membrane could be incorporated in the model by accounting for non-zero diffusive fluxes at the boundary, for simplicity the following analysis is restricted to non-permeable bounding surfaces, for which the boundary condition for the concentration reduces to $\partial c / \partial \eta = 0$ at $y = 0, h$. The pressure drop is negligible at the entrance of the canal, resulting in the condition $p' = 0$ at $x = 0$. The requirement that the axial volume flux $\int_0^1 (\int_0^h u \, dy) \, ds$ must vanish at the closed end $x = 1$ completes the set of boundary conditions needed to determine the flow in the canal.

Besides the Richardson number Ri defined in (3.1) and the compliance parameter $\varepsilon \ll 1$ defined in (3.2), the set of governing parameters includes the Womersley number $\alpha = h_c / (v/\omega)^{1/2}$, the dimensionless elastic wavenumber $k = L\omega / [(h_c/\gamma'_c)/\rho]^{1/2}$, and the rescaled Schmidt number $\sigma = S\varepsilon^2$. The problem is to be solved in the limit $\varepsilon \ll 1$, with $\alpha \sim 1$ and $k \sim 1$, as is appropriate for describing CSF flow in the spinal canal, for solutes with $\sigma = S\varepsilon^2 \sim 1$ and $Ri \sim 1$, the distinguished limit of interest in intrathecal drug dispersion.

4. Solute transport in the presence of buoyancy

Following our previous analyses (Sánchez *et al.* 2018; Lawrence *et al.* 2019; Alaminos-Quesada *et al.* 2022), the problem defined above is solved by expressing the different variables as expansions in powers of ε (e.g. $u = u_0 + \varepsilon u_1 + \dots$) and solving sequentially the equations that arise when collecting terms at different orders in ε . In the development, it is convenient to replace the transverse coordinate y by its normalized counterpart $\eta = y/h$, with $0 \leq \eta \leq 1$. The velocity field depends on the solute concentration through the buoyancy term appearing in (3.5), although the dependence is weak, since $\varepsilon \ll 1$. The distribution of c can be anticipated to vary over times of the order of the residence time associated with the bulk motion $\varepsilon^{-2}\omega^{-1}$, inducing slow

changes in the velocity, to be described below by introducing the long time scale $\tau = \varepsilon^2 t$ as an additional independent variable. In this two-time scale formalism, all variables are assumed to be 2π periodic in the short time scale t , slow changes in time being described by the additional time variable τ , which is formally introduced in the equations by replacing the original time derivatives by $\partial/\partial t + \varepsilon^2 \partial/\partial \tau$.

4.1. Leading-order solution

At leading order in the limit $\varepsilon \ll 1$, the problem reduces to the integration of

$$\frac{1}{\ell} \frac{\partial}{\partial x} (\ell u_0) - \frac{\eta}{\bar{h}} \frac{\partial \bar{h}}{\partial x} \frac{\partial u_0}{\partial \eta} + \frac{1}{\bar{h}} \frac{\partial v_0}{\partial \eta} + \frac{1}{\ell} \frac{\partial w_0}{\partial s} - \frac{\eta}{\bar{h}} \frac{1}{\ell} \frac{\partial \bar{h}}{\partial s} \frac{\partial w_0}{\partial \eta} = 0, \tag{4.1}$$

$$\frac{\partial u_0}{\partial t} = -\frac{\partial p'_0}{\partial x} + \frac{1}{\alpha^2 \bar{h}^2} \frac{\partial^2 u_0}{\partial \eta^2}, \tag{4.2}$$

$$\frac{\partial w_0}{\partial t} = -\frac{1}{\ell} \frac{\partial \hat{p}_0}{\partial s} + \frac{1}{\alpha^2 \bar{h}^2} \frac{\partial^2 w_0}{\partial \eta^2}, \tag{4.3}$$

$$\frac{\partial c_0}{\partial t} = 0, \tag{4.4}$$

supplemented with $h'_0 = \gamma(\cos t + k^2 p'_0)$, the leading-order form of (3.3), with boundary conditions $u_0 = v_0 = w_0 = \partial c_0/\partial \eta = 0$ at $\eta = 0$, and $u_0 = v_0 - \partial h'_0/\partial t = w_0 = \partial c_0/\partial \eta = 0$ at $\eta = 1$, $p'_0 = 0$ at $x = 0$, and $\int_0^1 (\bar{h} \int_0^1 u_0 d\eta) ds = 0$ at $x = 1$. As indicated by (4.4), at leading order the solute concentration varies only in the long time scale τ , variations with the short time scale t affecting only higher-order corrections of relative order ε and smaller. As shown previously (Sánchez *et al.* 2018), the solution to the periodic linear lubrication problem (4.1)–(4.3) can be written as

$$\left. \begin{aligned} u_0 &= \text{Re} \left(i e^{it} U \right), & v_0 &= \text{Re} \left(i e^{it} V \right), & w_0 &= \text{Re} \left(i e^{it} W \right), \\ p'_0 &= \text{Re} \left(e^{it} P' \right), & \hat{p}_0 &= \text{Re} \left(e^{it} \hat{P} \right), & h'_0 &= \text{Re} \left(e^{it} H' \right), \end{aligned} \right\} \tag{4.5}$$

where the complex functions $U(x, \eta, s)$, $V(x, \eta, s)$, $W(x, \eta, s)$, $P'(x)$, $\hat{P}(x, s)$ and $H'(x, s)$ are given in Appendix A for completeness. The leading-order solution (4.5), identical to that found in our earlier analyses (Sánchez *et al.* 2018; Lawrence *et al.* 2019), is buoyancy-free, and therefore independent of the long time scale τ . Buoyancy will be seen to enter at the following order to modify the bulk motion.

4.2. Time-averaged Eulerian velocity

While the above harmonic functions (4.5) have zero mean values over an oscillation period, i.e. $\langle u_0 \rangle = 0$, with $\langle \cdot \rangle = \int_t^{t+2\pi} \cdot dt / (2\pi)$, the velocity corrections (u_1, v_1, w_1) contain non-zero cycle-averaged components $(\langle u_1 \rangle, \langle v_1 \rangle, \langle w_1 \rangle)$ that satisfy the

quasi-steady conservation equations

$$\mathcal{F} = \frac{1}{\ell} \frac{\partial}{\partial x} (\ell \bar{h} \langle u_1 \rangle) + \frac{1}{\ell} \frac{\partial}{\partial s} (\bar{h} \langle w_1 \rangle) - \frac{\partial}{\partial \eta} \left(\eta \frac{\partial \bar{h}}{\partial x} \langle u_1 \rangle + \frac{\eta}{\ell} \frac{\partial \bar{h}}{\partial s} \langle w_1 \rangle \right) + \frac{\partial \langle v_1 \rangle}{\partial \eta}, \quad (4.6)$$

$$\mathcal{F}_x = -\frac{\partial \langle p'_1 \rangle}{\partial x} + \frac{1}{\bar{h}^2 \alpha^2} \frac{\partial^2 \langle u_1 \rangle}{\partial \eta^2} - Ri c_0, \quad (4.7)$$

$$\mathcal{F}_s = -\frac{1}{\ell} \frac{\partial \langle \hat{p}_1 \rangle}{\partial s} + \frac{1}{\bar{h}^2 \alpha^2} \frac{\partial^2 \langle w_1 \rangle}{\partial \eta^2}, \quad (4.8)$$

obtained by taking the time average of the equations that emerge when collecting terms of order ε in (3.4)–(3.6). The functions \mathcal{F} , \mathcal{F}_x and \mathcal{F}_s appearing on the left-hand side of the above equations carry the combined effects of convective acceleration and canal deformation on the mean Eulerian motion. These functions involve time averages of products of the harmonic functions (4.5), with expressions given in Appendix A.

The velocity must satisfy the homogeneous boundary conditions $\langle u_1 \rangle = \langle v_1 \rangle = \langle w_1 \rangle = 0$ at $\eta = (0, 1)$ and $\int_0^1 (\bar{h} \int_0^1 \langle u_1 \rangle d\eta) ds = 0$ at $x = 1$. Note that the condition $\langle v_1 \rangle = 0$ at $\eta = 1$ follows at this order from the general condition $v = \partial h' / \partial t$ written in the two-time scale formalism in the form $v = \partial h' / \partial t + \varepsilon^2 \partial h' / \partial \tau$, so that $\langle v \rangle = \varepsilon^2 \partial \langle h' \rangle / \partial \tau$.

Observation of (4.6)–(4.8) reveals that the mean Eulerian motion has two different driving mechanisms, namely, the buoyancy force $-Ri c_0$ appearing on the right-hand side of (4.7), which varies slowly in the long time scale τ , and the steady functions \mathcal{F} , \mathcal{F}_x and \mathcal{F}_s , associated with convective acceleration and canal deformation. Since the problem is linear, the two distinct driving mechanisms can be quantified separately by expressing the mean Eulerian velocity $(\langle u_1 \rangle, \langle v_1 \rangle, \langle w_1 \rangle) = (u_{SS} + u_B, v_{SS} + v_B, w_{SS} + w_B)$ as the sum of the steady-streaming velocity (u_{SS}, v_{SS}, w_{SS}) and the buoyancy-induced drift (u_B, v_B, w_B) . The former was obtained in our previous analyses (Sánchez *et al.* 2018; Lawrence *et al.* 2019) by integration of the problem arising with $Ri = 0$, yielding the solution given in Appendix A, while the latter, the new contribution arising when the drug density differs from the CSF density (i.e. when $Ri \neq 0$), can be obtained by integration of the reduced problem corresponding to $\mathcal{F} = \mathcal{F}_x = \mathcal{F}_s = 0$. The resulting solution, involving integrals of the leading-order solute concentration c_0 , can be cast in the form

$$\frac{u_B}{\alpha^2 Ri \bar{h}^2} = 3\eta(1 - \eta) \frac{\int_0^1 \bar{h}^3 C ds}{\int_0^1 \bar{h}^3 ds} + \eta \int_0^\eta c_0 d\tilde{\eta} - \int_0^\eta c_0 \tilde{\eta} d\tilde{\eta} - \eta \int_0^1 c_0(1 - \eta) d\eta, \quad (4.9)$$

$$\frac{w_B}{\alpha^2 Ri \bar{h}^2} = \frac{3\eta(1 - \eta)}{\bar{h}^3} \frac{\partial}{\partial x} \left[\ell \left(\int_0^s \bar{h}^3 C d\tilde{s} - \frac{\int_0^1 \bar{h}^3 C ds}{\int_0^1 \bar{h}^3 ds} \int_0^s \bar{h}^3 d\tilde{s} \right) \right], \quad (4.10)$$

$$\frac{v_B}{\alpha^2 Ri} = \frac{\eta^2}{\ell} \left(\eta - \frac{3}{2} \right) \frac{\partial}{\partial x} (\ell \bar{h}^3 C) - \frac{1}{\ell} \frac{\partial}{\partial x} (\ell \bar{h}^3 f_B) + \eta \frac{\partial \bar{h}}{\partial x} \frac{u_B}{\alpha^2 Ri} + \frac{\eta}{\ell} \frac{\partial \bar{h}}{\partial s} \frac{w_B}{\alpha^2 Ri}, \quad (4.11)$$

where

$$C = \int_0^1 c_0 \eta (1 - \eta) d\eta \quad (4.12)$$

and

$$f_B = \frac{1}{2} \int_0^\eta c_0 \tilde{\eta}^2 d\tilde{\eta} + \left(\frac{\eta^2}{2} - \eta \right) \int_0^\eta c_0 \tilde{\eta} d\tilde{\eta} - \frac{\eta^2}{2} \int_\eta^1 c_0 (1 - \tilde{\eta}) d\tilde{\eta}, \quad (4.13)$$

with tildes used to denote dummy integration variables.

4.3. The integro-differential transport equation

As shown by Lawrence *et al.* (2019), the transport equation that determines the slow spatiotemporal evolution of $c_0(x, \eta, s, \tau)$, given by

$$\frac{\partial c_0}{\partial \tau} + u_L \frac{\partial c_0}{\partial x} + \left[\frac{v_L}{\bar{h}} - \frac{\eta}{\bar{h}} \left(u_L \frac{\partial \bar{h}}{\partial x} + \frac{w_L}{\ell} \frac{\partial \bar{h}}{\partial s} \right) \right] \frac{\partial c_0}{\partial \eta} + \frac{w_L}{\ell} \frac{\partial c_0}{\partial s} = \frac{1}{\alpha^2 \sigma \bar{h}^2} \frac{\partial^2 c_0}{\partial \eta^2}, \quad (4.14)$$

can be obtained by analysing terms of order ε^2 in (3.7). The convective transport in the long time scale is found to be driven by the mean Lagrangian velocity

$$\left. \begin{aligned} u_L &= u_{SS} + u_B + u_{SD}, \\ v_L &= v_{SS} + v_B + v_{SD}, \\ w_L &= w_{SS} + w_B + w_{SD}, \end{aligned} \right\} \quad (4.15)$$

given by the sum of the cycle-averaged Eulerian velocity ($\langle u_1 \rangle, \langle v_1 \rangle, \langle w_1 \rangle$) = $(u_{SS} + u_B, v_{SS} + v_B, w_{SS} + w_B)$ and the Stokes drift (u_{SD}, v_{SD}, w_{SD}), the latter being a purely kinematic contribution resulting from the spatial non-uniformity of the pulsatile flow (Lawrence *et al.* 2019). The steady-streaming and Stokes-drift contributions to the time-averaged Lagrangian motion, constant and independent of the drug concentration, were identified in our previous analysis (Lawrence *et al.* 2019), with corresponding expressions given in Appendix A. The slowly varying buoyancy-induced velocity (u_B, v_B, w_B) is a new contribution coupling the bulk motion with the drug concentration. Since the expressions for (u_B, v_B, w_B) , given in (4.9)–(4.11), contain spatial integrals of the solute concentration c_0 , the transport equation (4.14), which is a linear partial differential equation in the buoyancy-free case $Ri = 0$ analysed earlier (Lawrence *et al.* 2019), adopts for $Ri \neq 0$ a nonlinear integro-differential character that complicates the description.

The transport equation (4.14), supplemented with (4.9)–(4.11) for the evaluation of the slowly varying buoyancy-induced velocity (u_B, v_B, w_B) and with the expressions given in Appendix A for the time-independent velocity components (u_{SS}, v_{SS}, w_{SS}) and (u_{SD}, v_{SD}, w_{SD}), can be integrated with boundary conditions $\partial c_0 / \partial \eta = 0$ at $\eta = (0, 1)$ to determine the evolution of the solute. An additional condition must be prescribed at points across the entrance section $x = 0$ where there exists inflow (i.e. positive values of u_L). In the following integrations, it is assumed that the drug concentration of the incoming fluid particles is identically zero, as is consistent with drug delivery in the lumbar region. Bolus injection can be described by using as initial condition the solute distribution $c_0 = c_i(x, \eta, s)$ existing at the end of the short injection phase. The description of continuous drug infusion is somewhat more complicated, in that it requires consideration of a localized solute source at the delivery location, a case to be addressed separately in § 7.

Although the reduced Schmidt number $\sigma = S\varepsilon^2$ can be expected to take order-unity values for the drugs typically used in applications (e.g. $\sigma = 0.532$ – 2.128 when evaluated with $\varepsilon = 0.02$ – 0.04 for methotrexate), it is instructive to investigate simplifications arising for extreme values of this parameter. For example, for $\sigma \gg 1$, the transverse-diffusion term

in (4.14) becomes negligible, with the result that the solute particles are transported by the mean Lagrangian velocity while maintaining its initial concentration. Numerical methods specifically tailored to describe Lagrangian particle dispersion can be instrumental to speed up the associated computations (Guan *et al.* 2023). In the opposite limit, $\sigma \ll 1$, diffusion rapidly uniformizes the composition in the transverse direction, so that the concentration becomes independent of η . The simplified equation applying in this limit can be derived by integrating (4.14) in η with boundary conditions $\partial c_0/\partial \eta = 0$ at $\eta = (0, 1)$, to yield

$$\frac{\partial c_0}{\partial \tau} + \bar{u}_L \frac{\partial c_0}{\partial x} + \frac{\bar{w}_L}{\ell} \frac{\partial c_0}{\partial s} = 0, \tag{4.16}$$

where $\bar{u}_L = \int_0^1 u_L d\eta$ and $\bar{w}_L = \int_0^1 w_L d\eta$ are the width-averaged values of the longitudinal and azimuthal components of the mean Lagrangian velocity. It will be of interest in future work to assess the predictive capability of the above simple equation.

It is worth noting that, unlike direct numerical simulations (DNS) of drug delivery, which need to account for the small cumulative concentration changes that occur over subsequent cardiac cycles, the reduced description (4.14) targets directly the solute evolution in the long time scale $\varepsilon^{-2}\omega^{-1}$ that characterizes drug dispersion along the canal. Since the number of cardiac cycles required to achieve significant drug dispersion scales with ε^{-2} , DNS computations accounting for realistic values of $\varepsilon \sim 0.02\text{--}0.04$ must in general consider hundreds of cycles, resulting in computational times that are orders of magnitude larger than those involved in integrating (4.14).

5. Validation of the reduced model

For buoyancy-free systems (i.e. $Ri = 0$), the mean Lagrangian velocity reduces to $(u_L, v_L, w_L) = (u_{SS} + u_{SD}, v_{SS} + v_{SD}, w_{SS} + w_{SD})$, independent of the solute concentration, with the result that the associated transport equation (4.14) becomes a linear partial differential equation with time-independent coefficients. The accuracy of the resulting simplified description was tested previously (Gutiérrez-Montes *et al.* 2021) by comparing the model predictions with results of DNS computations involving integrations of the complete Navier–Stokes equations. The previous comparisons are extended here to cases with $Ri \neq 0$, for which (4.14) displays its complicated nonlinear integro-differential character. As in the previous paper, results are given below for two different geometrical configurations with constant perimeter $\ell = 1$, namely, a constant-eccentricity annular canal bounded by parallel cylindrical surfaces, yielding a canal width $\bar{h}(s) = 1 - 0.5 \cos(2\pi s)$, and a variable-eccentricity configuration with canal width $\bar{h}(x, s) = 1 - 0.5 \cos(2\pi s) \cos(2\pi x)$. The latter geometry is selected as a simplified model to mimic changes in the position of the spinal cord relative to the dura mater existing along the human spinal canal, which are depicted in figures 1(b) and 1(c). As one traverses the spine caudally, the spinal cord, which is closer to the posterior side of the canal in the cervical region, moves closer to the anterior side in the thoracic region, eventually returning to the posterior side in the lumbar region. These changes in the spinal canal eccentricity are known to produce changes in the direction of the longitudinal mean Lagrangian velocity (Coenen *et al.* 2019), leading to the recirculating pattern of bulk CSF flow shown in figure 1(d).

The validation addresses the temporal evolution of the solute following the release of a finite dose, with the initial solute concentration described by the truncated Gaussian

distribution

$$c_i = \min \left\{ 1, \frac{3}{2} \exp \left[-16 \left(\frac{x - x_0}{\delta} \right)^2 \right] \right\}, \quad (5.1)$$

which represents a band of solute with characteristic width δ centred at x_0 and having a saturated core flanked by thin layers across which the concentration decays to zero. The values $\delta = 0.2$ and $x_0 = 0.65$ are selected in the sample computations shown below.

The numerical scheme for the integration of (4.14) utilizes a second-order centred finite-difference approximation for the spatial discretization of the viscous terms, and an upwind scheme for the nonlinear terms. A second-order explicit Runge–Kutta scheme is used for time marching, with the integral expressions (4.9)–(4.11) evaluated with a simple trapezoidal rule. A detailed account of the numerical scheme employed in the accompanying DNS computations can be found in Gutiérrez-Montes *et al.* (2021). The DNS computations were performed for a dimensionless stroke length $\varepsilon = 0.02$, so that every unit in the long time scale τ corresponds to $(2\pi\varepsilon)^{-2} \simeq 400$ oscillatory cycles in the DNS computations. The resulting concentration, which includes short-time fluctuations associated with the oscillatory flow, is cycled-averaged to give $\langle c \rangle = \int_t^{t+2\pi} c \, dt / (2\pi)$, to be compared with the associated model prediction c_0 .

Results are shown in figures 2 (constant eccentricity) and 3 (variable eccentricity) for a canal with $\alpha = 3$, $k = 0.5$, $\gamma = 1$ and $\sigma = 0.4$. To illustrate effects of buoyancy on drug dispersion, in addition to the buoyancy-neutral case $Ri = 0$, the computations consider both a heavy solute with $\rho_d > \rho$ ($Ri = -1$) and a light solute with $\rho_d < \rho$ ($Ri = 1$). The figures display three-dimensional views of the entire canal showing isosurfaces of solute concentration c_0 for several values of τ . The quantitative comparisons between the model and the DNS include distributions of width-averaged concentrations $\int_0^1 c_0 \, d\eta$ and $\int_0^1 \langle c \rangle \, d\eta$ as well as corresponding axial distributions of concentration per unit length of canal, computed according to $C_0 = \int_0^1 \bar{h} \int_0^1 c_0 \, d\eta \, ds$ and $\langle C \rangle = \int_0^1 \bar{h} \int_0^1 \langle c \rangle \, d\eta \, ds$, with the dotted curves representing the initial distribution $C_i = \int_0^1 \bar{h} \int_0^1 c_i \, d\eta \, ds$. For reference, the left-hand contour panels showing $\int_0^1 c_0 \, d\eta$ include the streamlines corresponding to the width-averaged Lagrangian drift velocity ($\int_0^1 u_L \, d\eta$, $\int_0^1 w_L \, d\eta$), which evolve in time under the action of buoyancy when $Ri \neq 0$. Figures 2(a) and 3(a) indicate the fraction of the drug bolus that remains in the canal at time τ , as computed with the reduced transport model according to $\chi = \int_0^1 C_0 \, dx / \int_0^1 C_i \, dx$.

Observation of the plots displaying streamlines reveals that the solute moves predominantly following the width-averaged flow, thereby highlighting the important role of the Lagrangian drift in the dispersion of the drug. For a non-buoyant solute in a constant-eccentricity canal, investigated in figure 2(c), the mean Lagrangian flow exhibits a simple circulating pattern, in which the fluid enters along the wide part of the canal ($s = 0.5$) and leaves along the narrow part ($s = 0$), the motion being slower near the closed end $x = 1$. As seen in figures 2(b) and 2(d), the presence of buoyancy alters the flow, with associated streamlines evolving in time as the spatial distribution of the solute changes. Buoyancy promotes rapid ascension of the light solute along the narrow part of the canal, that being the behaviour displayed in figure 2(d). Conversely, heavy solutes tend to sink to the bottom, progression towards the canal entrance being limited to a thin solute filament stretching along the narrow section $s = 0$, as seen in figure 2(b). While the overall agreement between the model and the DNS is generally satisfactory, a notable deviation arises at $x = 1$ in the heavy-solute results. Here, the model predicts a zero concentration for

Buoyancy effects on intrathecal drug delivery

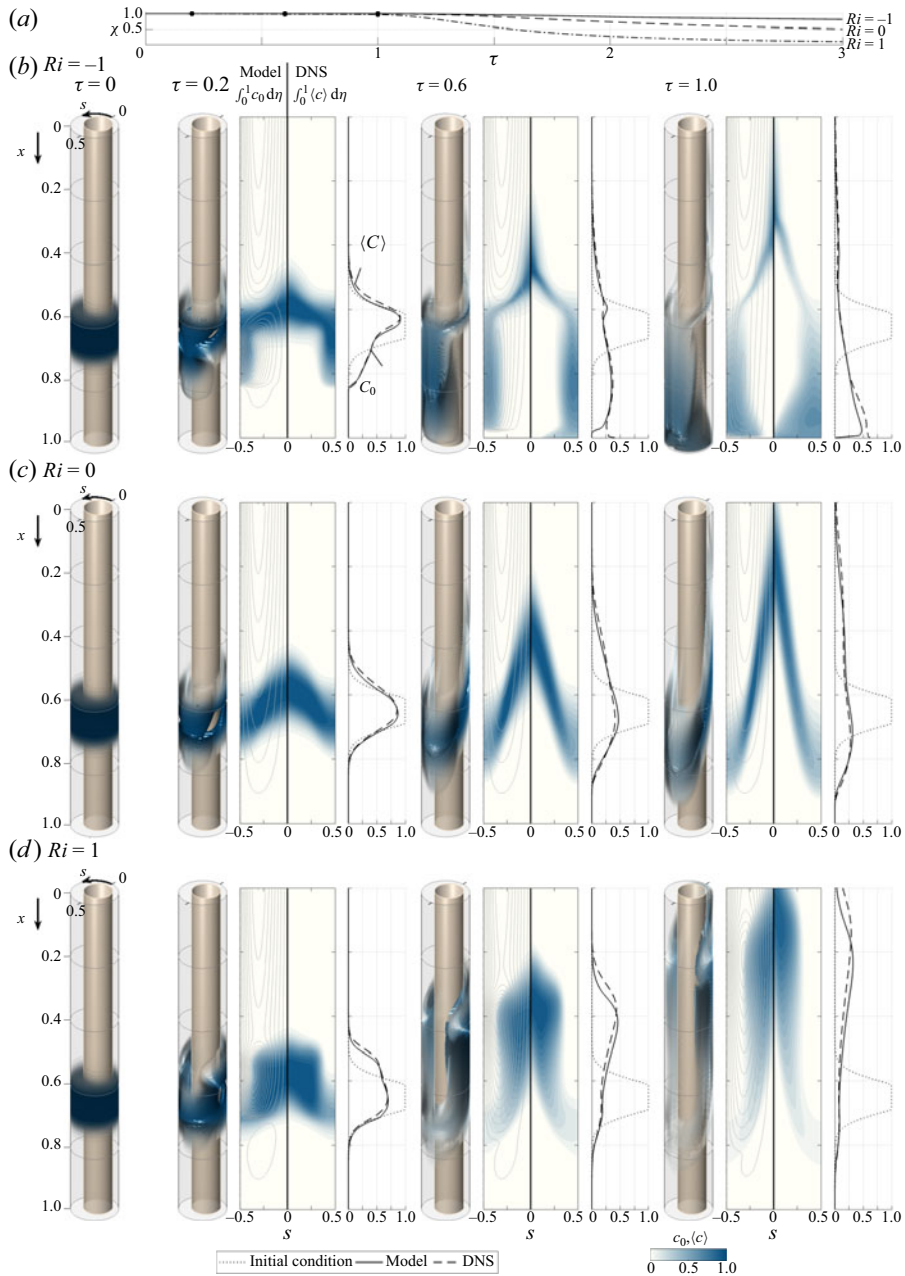


Figure 2. The temporal evolution of the solute concentration in a constant-eccentricity canal with $\ell = 1$, $\bar{h}(s) = 1 - 0.5 \cos(2\pi s)$, $\alpha = 3$, $k = 0.5$, $\gamma = 1$ and $\sigma = 0.4$ as obtained from the reduced transport equation (4.14) and from DNS computations for three different values of the Richardson number, (b) $Ri = -1$, (c) $Ri = 0$ and (d) $Ri = 1$, with (a) showing the temporal evolution of the total amount of solute contained in the canal (normalized with its initial value) predicted with the reduced model, as computed from $\chi = \int_0^1 C_0 dx / \int_0^1 C_i dx$. The plots include three-dimensional isosurfaces of solute concentration c_0 , distributions of width-averaged concentrations $\int_0^1 c_0 d\eta$ and $\int_0^1 \langle c \rangle d\eta$, and corresponding axial distributions of concentration per unit length of canal $C_0 = \int_0^1 \bar{h} \int_0^1 c_0 d\eta ds$ (solid curves) and $\langle C \rangle = \int_0^1 \bar{h} \int_0^1 \langle c \rangle d\eta ds$ (dashed curves), with the dotted curves representing the initial distribution $C_i = \int_0^1 \bar{h} \int_0^1 c_i d\eta ds$. The streamlines shown in the plots of $\int_0^1 c_0 d\eta$, corresponding to the width-averaged Lagrangian drift velocity ($\int_0^1 u_L d\eta$, $\int_0^1 w_L d\eta$), are plotted using constant spacing 0.01 for the associated width-averaged stream function.

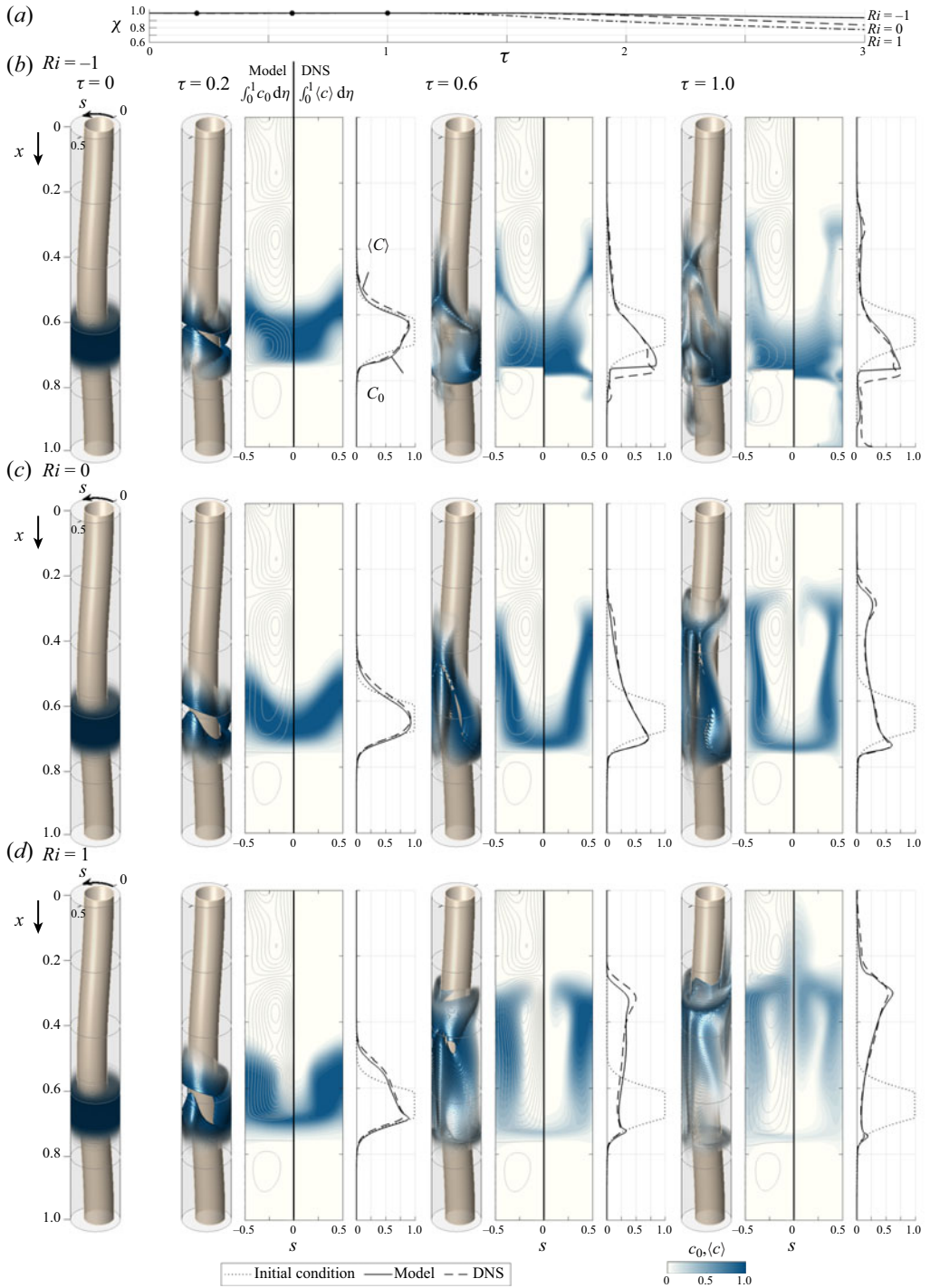


Figure 3. Same as figure 2 but for a variable eccentricity canal with $\bar{h}(x, s) = 1 - 0.5 \cos(2\pi s) \cos(2\pi x)$.

all times, whereas the DNS yield a concentration that increases over time. These disparities stem from the effect of axial diffusion (not present in the model), which, though negligible elsewhere, becomes significant in this terminal region as the velocity diminishes to zero.

Buoyancy effects are clearly visible in the axial distributions of concentration per unit length of canal C_0 and $\langle C \rangle$, and also in the curves representing in [figure 2\(a\)](#) the fraction χ of the initial bolus that remains inside the canal at time τ . The results indicate that at the longest time computed ($\tau = 3$), most of the light solute (91 %) has abandoned the canal, while approximately 82 % of the heavy solute remains inside. This behaviour is consistent with previous clinical observations pertaining to hyperbaric and hypobaric drugs (Mitchell *et al.* 1988; Povey *et al.* 1989; Richardson *et al.* 1996; Veering *et al.* 2001; Loubert *et al.* 2011).

For the variable-eccentricity canal shown in [figure 3](#), the streamline patterns of the mean Lagrangian motion feature multiple recirculating regions. The flow direction is reversed between contiguous recirculating cells, as can be inferred from the maps of solute concentration. The solute, carried by the fluid particles, encircles the recirculating regions, thereby hindering the solute progression towards the canal entrance. The plots at $\tau = 1$ show most of the light solute accumulating at the interface separating near $x = 0.25$ the two top recirculating regions (see [figure 3d](#)), while the heavy solute accumulates around $x = 0.75$, above the nearly stagnant bottom recirculating region, as shown in [figure 3\(b\)](#). As indicated by comparison of [figures 2\(a\)](#) and [3\(a\)](#), the rate at which the solute reaches the canal entrance is significantly lower for canals with variable eccentricity, in accordance with previous results (Coenen *et al.* 2019; Gutiérrez-Montes *et al.* 2021).

The agreement between the model and the DNS results is very satisfactory, quantitative departures remaining consistently small regardless of the value of Ri . The degree of agreement is particularly remarkable in connection with the dashed and solid curves representing the longitudinal distribution of the solute at different instants of time. In view of the comparisons shown in [figures 2](#) and [3](#), it can be concluded that the reduced model provides a sufficiently accurate description for most purposes while requiring computational times that are a fraction of those involved in the DNS computations. For instance, to generate the results corresponding to each value of Ri in [figures 2](#) and [3](#), the computations using the reduced model were completed in approximately 10 minutes using a laptop computer, whereas the DNS computations took approximately a week on a 24-core cluster.

6. Dispersion of a drug bolus

The reduced transport equation (4.14) can be used to generate predictions of drug dispersion based on subject-specific canal boundaries and dimensions, with the model parameters determined using magnetic resonance imaging (MRI) measurements, as explained in Coenen *et al.* (2019). The sample computations shown below use measurements corresponding to a 25-year old woman (subject 1 in Coenen *et al.* 2019), with relevant anatomical and Lagrangian-flow details shown in [figures 1\(b\)–1\(d\)](#). High-resolution images of the entire spine were segmented to extract the three-dimensional position of the pia and dura mater, with the cauda equina (the group of roots branching off at the end of the spinal cord in the lumbar region) represented as an extension of the spinal cord with cross-sectional area tapering down to the end of the spinal canal. The resulting canal anatomy is shown in [figure 1\(c\)](#), with the transverse dimension scaled by a factor 3 to facilitate visualization. A Gaussian filter was used to generate smooth distributions of the perimeter and width of the canal, their mean values

$\ell_c = 21.8$ mm and $h_c = 3.6$ mm employed to scale the geometrical functions $\ell(x)$ and $\bar{h}(x, s)$ used in the model, with the longitudinal distance x being scaled with the total canal length $L = 59$ cm. As explained in Coenen *et al.* (2019), the compliance of the canal was determined by comparing predictions of oscillatory flow rate with phase-contrast MRI measurements, yielding the function $\gamma'(x) = 14.3[0.8 + 0.3 \tanh(4x - 0.2)]$ m MPa⁻¹ with mean value $\gamma'_c = 14.107$ m MPa⁻¹. For this subject, the associated values of the Womersley number and elastic wavenumber were found to be $\alpha = h_c/(v/\omega)^{1/2} = 10.8$ and $k = L\omega/[(h_c/\gamma'_c)/\rho]^{1/2} = 0.73$, respectively.

As discussed earlier in connection with figures 2 and 3, the solute moves predominantly following the Lagrangian drift. Before computing drug dispersion, it is therefore of interest to investigate the structure of the mean Lagrangian flow in the absence of buoyancy forces for the anatomically correct canal shown in figure 1(c). To that end, streamlines corresponding to the width-averaged velocity $(\int_0^1 u_L d\eta, \int_0^1 w_L d\eta)$ with $(u_L, w_L) = (u_{SS} + u_{SD}, w_{SS} + w_{SD})$ are plotted in figure 1(d). The resulting flow pattern comprises three main recirculating regions that occupy approximately the cervical, thoracic and lumbar regions, along with smaller recirculating regions distributed along the posterior midline ($s = 0$). The streamlines plotted correspond to evenly spaced values of the associated stream function, so that the physical distance between contiguous streamlines is a measure of the local flow velocity. As is clear from the plot, the fluid is nearly stagnant in the lumbar region, where drug delivery usually takes place, suggesting that neutrally buoyant or heavy drugs will tend to remain near the injection site. The extent to which buoyancy promotes the dispersion of light drugs is to be evaluated in figure 4(c).

To mimic an intrathecal injection via the L3/L4 posterior intervertebral space, the description of drug dispersion utilizes as initial condition the Gaussian solute distribution

$$c_i = \exp \left\{ - \left[\left(\frac{x - x_0}{\delta_x} \right)^2 + \left(\frac{\eta - \eta_0}{\delta_\eta} \right)^2 + \left(\frac{s - s_0}{\delta_s} \right)^2 \right] \right\}, \quad (6.1)$$

with $(x_0, \eta_0, s_0) = (0.8, 0.5, 0)$ and $(\delta_x, \delta_\eta, \delta_s) = (1/16, 500, 2/7)$. The reduced Schmidt number is selected to be $\sigma = \varepsilon^2 S = 1$, corresponding to a drug Schmidt number in the range $625 < S < 2500$ for $\varepsilon = 0.02\text{--}0.04$. Buoyancy effects are investigated for $Ri = 1$ and -1 , taken as representative of Midazolam and Morphine. Their temporal evolution is compared in figure 4 with results corresponding to a neutrally buoyant drug. To facilitate visualization, besides three-dimensional distributions of drug concentration c_0 , the figure shows two-dimensional maps of width-averaged concentration $\int_0^1 c_0 d\eta$ at selected times, with particular attention given to the short time evolution. For the three cases considered, corresponding supplementary movies are available at <https://doi.org/10.1017/jfm.2024.297>, showing the evolution of the drug up to $\tau = 5$.

The plots in figure 4(b) reveal that since the mean Lagrangian motion exhibits low velocities in the lumbar region, in the absence of buoyancy the initial drug evolution is very slow, with changes in the solute concentration distribution remaining virtually inappreciable for $\tau \leq 0.1$. For longer times, the drug spreads following the lumbar recirculating vortices, with the result that the drug concentrates in an elongated region about the $s = 0$ axis. For the longest time shown in the figure ($\tau = 3$), only a small amount of drug has moved into the thoracic region.

Buoyancy fundamentally alters this dispersion pattern, as seen in figures 4(a) and 4(c). For the localized drug distribution considered in the computations, a fast buoyancy-driven vortex is formed upon injection, as revealed by the closely spaced streamlines shown in the two-dimensional plots for $\tau = 0.01$ and 0.04 , rapidly spreading the drug around the

Buoyancy effects on intrathecal drug delivery

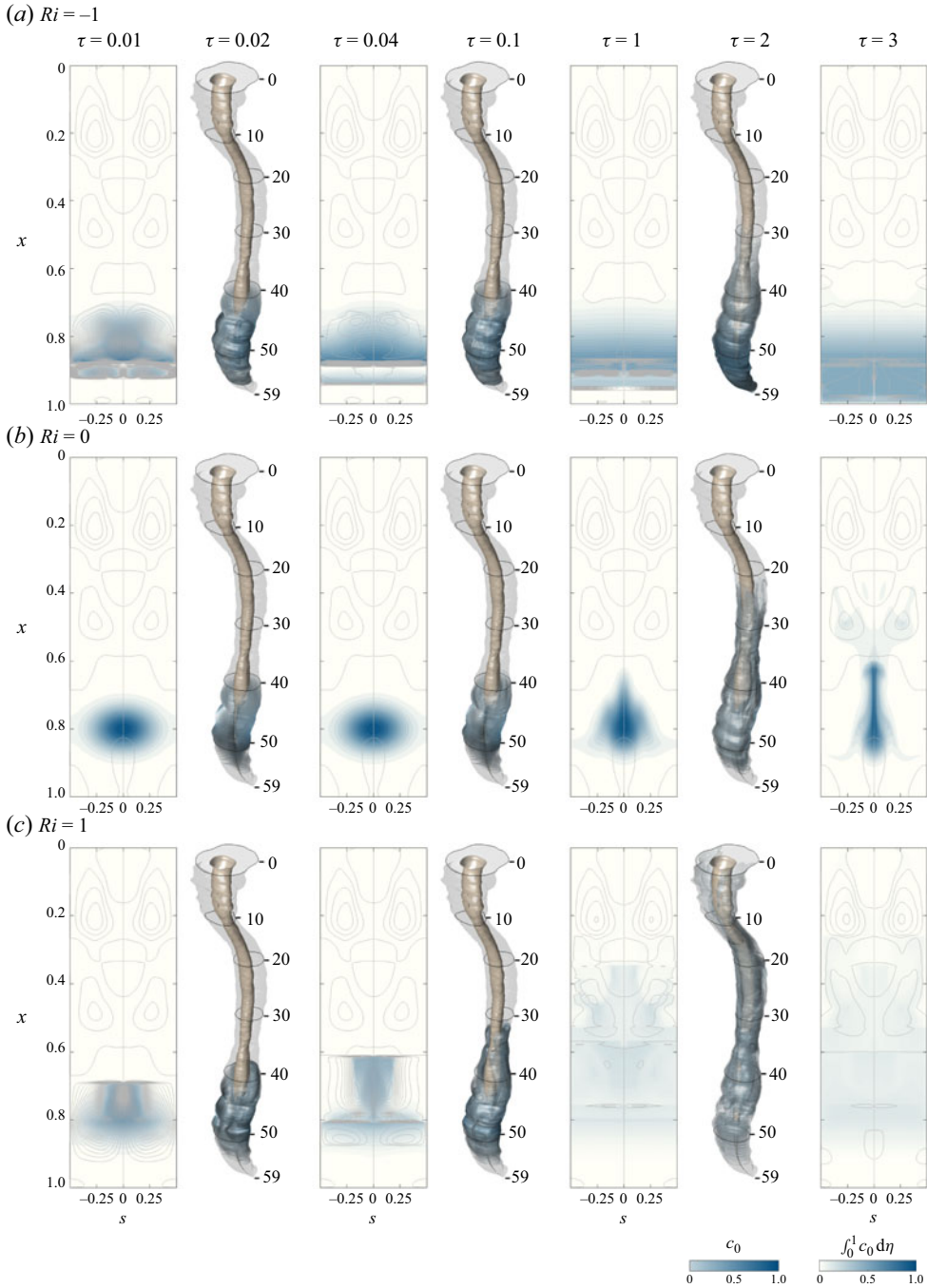


Figure 4. Drug dispersion following delivery of a finite dose via the L3/L4 intervertebral space as predicted for $\sigma = 1$ and three different values of the Richardson number, (a) $Ri = -1$, (b) $Ri = 0$ and (c) $Ri = 1$, by integration of the reduced transport equation (4.14) subject to the initial condition (6.1). The plots include distributions of width-averaged concentrations $\int_0^1 c_0 d\eta$ at $\tau = 0.01, 0.04, 1, 3$ along with three-dimensional isosurfaces of solute concentration c_0 at intermediate times $\tau = 0.02, 0.1, 2$.

spinal cord from the initial injection site. The associated recirculatory motion is directed upwards/downwards along the $s = 0$ axis for a light/heavy drug, thereby promoting drug dispersion towards the cranial cavity/sacrum region. The progression rate, very rapid for short times, when the buoyancy-induced velocities are larger as a result of the existing high solute concentrations, slows down for longer times, with the heavy drug adopting a stratified distribution that slowly sinks towards the bottom end of the canal, while the light drug continues to evolve upwards, spreading through the thoracic and cervical regions, and eventually reaching the cranial cavity. The behaviour revealed in the figure is therefore consistent with clinical observations regarding intrathecal injections in a seated position (Wildsmith *et al.* 1981; Mitchell *et al.* 1988; Povey *et al.* 1989; Richardson *et al.* 1996; Veering *et al.* 2001).

7. The description of continuous drug infusion

Medication by ITDD is often released by continuous infusion with use of a percutaneous catheter connected to an external pump or a totally implanted system. The delivery rates are usually small, with maximum values $\dot{Q} \lesssim 1 \text{ ml h}^{-1}$ (De Andres *et al.* 2022). Since drug dispersion is driven by the mean Lagrangian motion, it can be anticipated that the total volume of drug released in times of order of the characteristic bulk flow residence time $\varepsilon^{-2}\omega^{-1}$, given by $\dot{Q}\varepsilon^{-2}\omega^{-1}$, will be spread over the entire volume of the canal, $L\ell_ch_c \sim 40\text{--}60 \text{ ml}$, resulting in characteristic drug concentrations of order

$$c_c = \frac{\dot{Q}\varepsilon^{-2}\omega^{-1}}{L\ell_ch_c}, \tag{7.1}$$

with $c_c \lesssim 0.01$. As a result, in describing continuous drug infusion, it is appropriate to use an order-unity rescaled concentration $\varphi = c/c_c$. Also, since the density differences associated with the presence of the drug can be expected to be of order $c_c(\rho - \rho_d)$, the Richardson number (3.1), which was defined assuming solute concentrations of order unity, must be replaced with

$$Ri^* = \frac{g(\rho - \rho_d)c_c/\rho}{\varepsilon^2\omega^2L}, \tag{7.2}$$

so that the buoyancy acceleration term $-\varepsilon Ri c$ in (3.5) becomes $-\varepsilon Ri^* \varphi$.

Drug injection will be modelled using a localized volume source. To evaluate the contribution of the source to the mass and momentum balance, we must compare the characteristic value of the velocity induced by the source $\dot{Q}/(\ell_ch_c)$, obtained by dividing the volumetric injection rate \dot{Q} by the characteristic canal cross-section ℓ_ch_c , with the characteristic bulk flow velocity $\varepsilon^2\omega L$, the ratio of both quantities reducing simply to $[\dot{Q}/(\ell_ch_c)]/(\varepsilon^2\omega L) = c_c \ll 1$, as can be seen from (7.1). Since drug infusion induces negligibly small velocities, the presence of the localized source can be neglected in the first approximation when writing the continuity and momentum balance equations (3.4)–(3.6), but not in the solute conservation equation (3.7), which takes the form

$$\frac{\partial \varphi}{\partial t} + \varepsilon \left(u \frac{\partial \varphi}{\partial x} + v \frac{\partial \varphi}{\partial y} + \frac{w}{\ell} \frac{\partial \varphi}{\partial s} \right) = \frac{\varepsilon^2}{\alpha^2 \sigma} \frac{\partial^2 \varphi}{\partial y^2} + \varepsilon^2 q, \tag{7.3}$$

where the dimensionless function $q(x, \eta, s)$ represents the delivery rate per unit volume, scaled with $\dot{Q}/(L\ell_ch_c)$, so that $\int_0^1 \ell \int_0^1 \bar{h} \int_0^1 q \, d\eta \, ds \, dx = 1$. The asymptotic analysis, which

parallels that leading to (4.14), provides in this case the reduced transport equation

$$\frac{\partial \varphi_0}{\partial \tau} + u_L \frac{\partial \varphi_0}{\partial x} + \left[\frac{v_L}{\bar{h}} - \frac{\eta}{\bar{h}} \left(u_L \frac{\partial \bar{h}}{\partial x} + \frac{w_L}{\ell} \frac{\partial \bar{h}}{\partial s} \right) \right] \frac{\partial \varphi_0}{\partial \eta} + \frac{w_L}{\ell} \frac{\partial \varphi_0}{\partial s} = \frac{1}{\alpha^2 \sigma \bar{h}^2} \frac{\partial^2 \varphi_0}{\partial \eta^2} + q \quad (7.4)$$

for the leading-order representation φ_0 of the reduced solute concentration $\varphi = \varphi_0 + \varepsilon \varphi_1 + \dots$, with the buoyancy-driven component (u_B, v_B, w_B) of the Lagrangian drift velocity (u_L, v_L, w_L) evaluated from (4.9)–(4.11), with Ri and c_0 replaced by Ri^* and φ_0 .

To represent injection in the posterior intrathecal region through the L3/L4 intervertebral space, the sample computations shown in figure 5 consider a localized source with a normalized Gaussian distribution $q(x, \eta, s) = q_0 / (\int_0^1 \ell \int_0^1 \bar{h} \int_0^1 q_0 d\eta ds dx)$ centred at $(x_0, \eta_0, s_0) = (0.8, 0.5, 0)$, where the function q_0 is the exponential distribution found on the right-hand side of (6.1) with $(\delta_x, \delta_\eta, \delta_s) = (1/18, 1/5, 1/13)$. For the three cases considered, corresponding supplementary movies are available. The integrations, initiated with a zero drug concentration everywhere in the canal, describe transient drug infusion for three different reduced Richardson numbers $Ri^* = c_c Ri$, with the values $Ri^* = -0.1$ and 0.1 being comparable to, although somewhat larger than, those expected in connection with the dispersion of Meperidine and Fentanyl (see table 1). As in figure 4, figure 5 shows three-dimensional distributions of drug concentration φ_0 along with two-dimensional maps of width-averaged concentration $\int_0^1 \varphi_0 d\eta$. Note that for each plot, the scale of the colour contours has been adjusted to accommodate the increasing concentration, which is found to be significantly larger for non-buoyant drugs.

As can be seen in the plots of figure 5(b), the neutrally buoyant drug accumulates near the injection location while spreading longitudinally along the posterior axis $s = 0$ at a small rate determined by the existing mean Lagrangian velocity. In contrast, the heavy drug with $Ri^* = -0.1$, shown in figure 5(a), immediately begins to sink upon injection, driving a recirculatory motion that promotes simultaneous azimuthal spreading. At $\tau = 0.2$, the drug has already reached the sacral end of the canal, where it accumulates, forming a stratified distribution that is continuously stirred by the persistent buoyancy-driven recirculatory flow. Up to the longest time considered ($\tau = 2$), the heavy drug is confined to the lumbar region, with the result that the mean Lagrangian motion remains virtually unperturbed in the thoracic and cervical regions. On the other hand, infusion of light drugs, considered in figure 5(c), leads to the development of a plume. The light fluid rises until it reaches the boundary separating the lumbar and thoracic recirculating regions, forming a front at $x \simeq 0.6$, corresponding approximately to the T11/T12 intervertebral space. At that level, the drug spreads azimuthally to reach the anterior side, where it continues to flow upwards into the thoracic region, thereby resuming its progression towards the cranial cavity.

In analysing the transient results of figure 5, one should bear in mind that while the present computation assumes impermeable surfaces, leading to continuous drug accumulation, in ITDD processes drug uptake by the spinal nerve as well as through the dura membrane would eventually balance the infusion rate, leading to a steady drug distribution along the spine. For heavy drugs, the results shown in figure 5(a) suggest that the combined effects of buoyancy forces and drug uptake may limit drug dispersion to the lumbar and sacral regions. On the other hand, the results in figure 5(c) indicate that the ability of light drugs to reach the cranial cavity will depend on the competition of buoyancy-enhanced drug dispersion and drug absorption, whose quantification necessitates an extended reduced model accounting for pharmacokinetic effects.

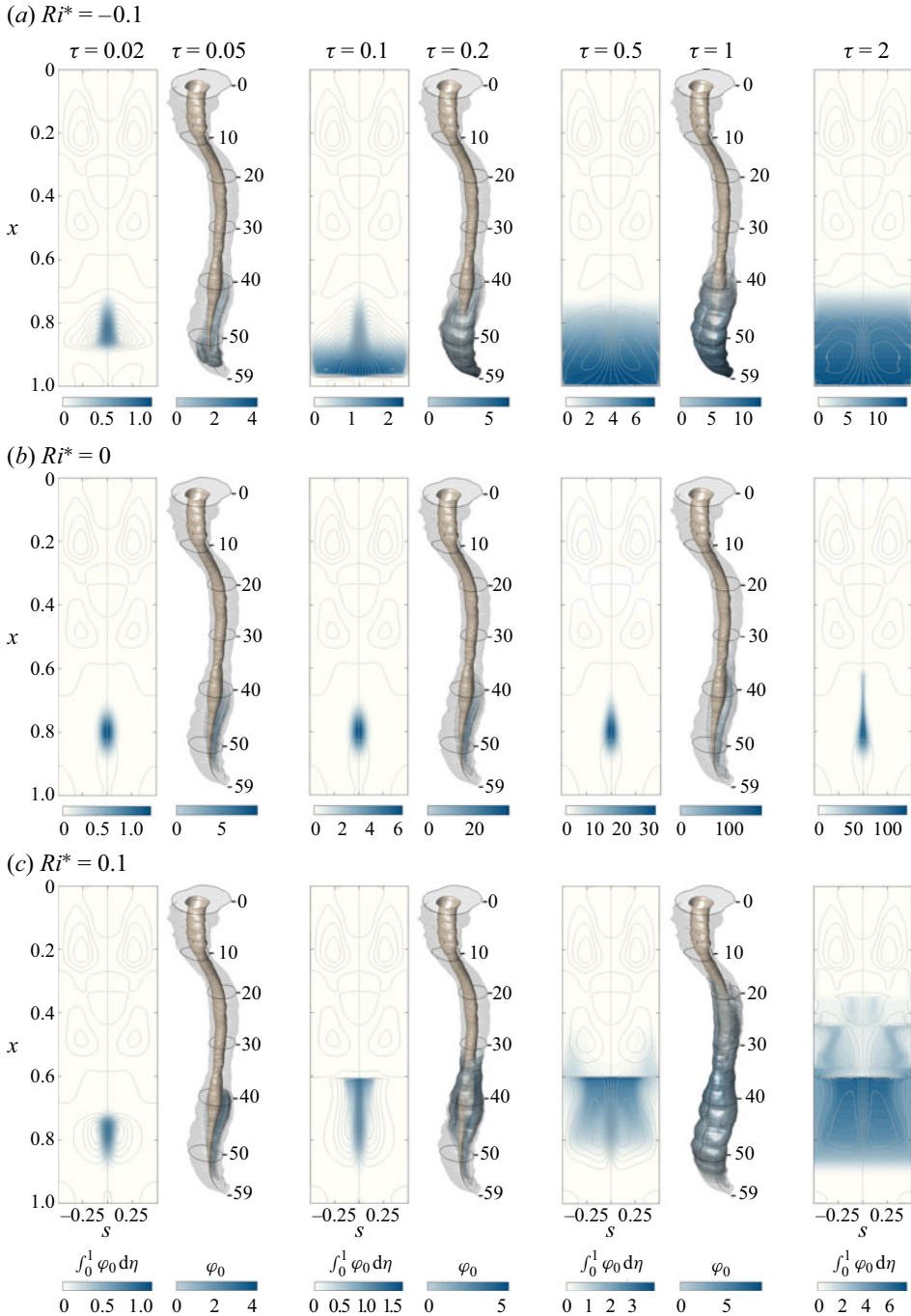


Figure 5. Drug dispersion corresponding to continuous drug infusion via the L3/L4 intervertebral space as predicted for $\sigma = 1$ and three different values of the rescaled Richardson number, (a) $Ri^* = -0.1$, (b) $Ri^* = 0$ and (c) $Ri^* = 0.1$, by integration of the reduced transport equation (7.4) with a localized solute source centred at $(x_0, \eta_0, s_0) = (0.8, 0.5, 0)$. The plots include distributions of width-averaged concentrations $\int_0^1 \varphi_0 d\eta$ at $\tau = 0.02, 0.1, 0.5, 2$ along with three-dimensional isosurfaces of solute concentration φ_0 at intermediate times $\tau = 0.05, 0.2, 1$.

8. Conclusions

Asymptotic and numerical methods have been used to quantify, for the first time, effects of buoyancy on the dispersion of drugs delivered in the spinal intrathecal space. A two-time scale asymptotic analysis, similar to that employed in a recent investigation pertaining to a wavy-walled planar channel (Alaminos-Quesada *et al.* 2022), leads to a simplified transport description targeting the relevant long time scale characterizing drug dispersion.

Since the buoyancy-driven component of the mean Lagrangian velocity driving the convective transport depends on spatial integrals of the solute concentration, as described in (4.9)–(4.11), the resulting solute transport equation, given in (4.14), displays an integro-differential character. The accuracy of the model is tested in computations of buoyancy-modulated solute dispersion in constant-eccentricity and variable-eccentricity annular canals. The model predictions are shown in figures 2 and 3 to be in excellent quantitative agreement with DNS results for positively, neutrally and negatively buoyant solutes, with the computational cost associated with integrations of the reduced transport equation typically being three to four orders of magnitude smaller than those involved in the DNS computations. It is worth mentioning that the two-time scale methodology developed here can find application in analysing buoyancy-modulated secondary motion in other applications involving small density differences, including those related to active particles (Guan *et al.* 2023).

The reduced model can be combined with MRI anatomical measurements to derive subject-specific predictions of drug dispersion, following the methodology outlined by Coenen *et al.* (2019). Sample computations are given for the transient solute evolution associated with the release of a finite dose and with the continuous infusion of a small constant rate. Buoyancy forces alter the mean Lagrangian motion, promoting upward (cranial)/downward (caudal) transport of light/heavy solutes. The comparisons presented in figures 4 and 5 clearly underline the important role of the small drug-to-CSF density differences $10^{-4} \lesssim |\rho - \rho_d|/\rho \lesssim 10^{-2}$, confirming previous clinical observations (Mitchell *et al.* 1988; Povey *et al.* 1989; Richardson *et al.* 1996; Veering *et al.* 2001; Loubert *et al.* 2011).

Future refinements of the transport description should account for additional effects, including respiration-induced flow, which is known to prevail in the lumbar region (Aktas *et al.* 2019; Gutiérrez-Montes *et al.* 2022), thereby possibly promoting drug dispersion near the injection site. Also important is the effect of the different micro-anatomical features that populate the spinal canal, such as denticulate ligaments, nerve roots and trabeculae (Stockman 2006; Gupta *et al.* 2008; Pahlavian *et al.* 2014; Tangen *et al.* 2015; Haga *et al.* 2017; Khani *et al.* 2018; Ayansiji *et al.* 2023). For instance, the recent experiments of Ayansiji *et al.* (2023) have shown that the presence of nerve roots significantly promotes tracer dispersion. The effect of trabeculae, which form a continuous weblike structure stretching across the spinal canal (Mortazavi *et al.* 2018), can be modelled by adding a distributed Brinkman flow resistance term to the momentum equation, as done earlier (Gupta *et al.* 2008; Tangen *et al.* 2015; Sincomb *et al.* 2022). Nerve roots and ligaments, on the other hand, are arranged in quasi-periodic rows aligned along the canal. Their discrete nature may potentially hinder their integration in models based on a slowly varying geometry. Fundamental understanding acquired in connection with oscillatory flows in wavy channels (Guibert, Plouraboué & Bergeon 2010; Alaminos-Quesada *et al.* 2022, 2023a) and obstacle arrays (House, Lieu & Schwartz 2014; Bhosale, Parthasarathy & Gazzola 2020; Alaminos-Quesada *et al.* 2023b) can be instrumental to aid these future modelling efforts. In this connection, it is worth mentioning the approximate transport

equation proposed recently by Linninger *et al.* (2023), which incorporates a longitudinal diffusion term with an experimentally fitted diffusivity as a computationally inexpensive means to provide quantification of drug dispersion in the presence of nerve roots.

Additional *in vitro* experiments, similar to those carried out recently (Ayansiji *et al.* 2023; Moral-Pulido *et al.* 2023), could be useful in guiding further model refinements. Besides consideration of effects of nerve roots, addressed in the recent work of Ayansiji *et al.* (2023), these future efforts should specifically consider the quantification of buoyancy-induced flow, with the densities of the working fluids representing the drug and the CSF selected to match the Richardson numbers found in ITDD applications. These experiments will be challenging, because the required density differences are extremely small, so that additional care will be needed to avoid density departures stemming from temperature differences.

Incorporation of pharmacokinetic effects, such as tissue uptake and drug clearance by the blood, which are central to ITDD (Segal & Brunnemann 1989; Sarntinoranont *et al.* 2003; Kuttler *et al.* 2010; Linninger *et al.* 2023), will be necessary to improve the predictive capability of the model in connection with clinical applications. Many drugs have characteristic absorption times of the order of the spinal residence time, so that a non-negligible fraction of the solute deposited in the lumbar region is absorbed along the canal before reaching the cranial cavity. For heavy drugs delivered in an upright position, the case depicted in figures 4(a) and 5(a), the combined effects of buoyancy forces and tissue uptake can be expected to result in drug confinement in the lumbar region, which can be beneficial for analgesic administration. In contrast, buoyancy can promote the dispersion of light drugs towards the cranial cavity, as seen in figures 4(c) and 5(c), thereby limiting uptake rates along the spine and enabling drug delivery to distant intracranial locations.

Supplementary movies. Supplementary movies are available at <https://doi.org/10.1017/jfm.2024.297>.

Acknowledgements. We thank Dr J. Lawrence for insightful discussions.

Funding. This work was supported by the National Institute of Neurological Disorders and Stroke through contract no. 1R01NS120343-01. The work of W.C. and C.G.-M. was supported by the Spanish MCIN/AEI/10.13039/501100011033 through the coordinated projects PID2020-115961RB-C31, PID2020-115961RB-C32 and PID2020-115961RA-C33.

Declaration of interests. The authors report no conflict of interest.

Author ORCIDs.

✉ J. Alaminos-Quesada <https://orcid.org/0000-0001-5346-9273>;

✉ C. Gutiérrez-Montes <https://orcid.org/0000-0003-1123-2002>;

✉ W. Coenen <https://orcid.org/0000-0002-2693-6574>;

✉ A.L. Sánchez <https://orcid.org/0000-0003-1349-9843>.

Appendix A. Buoyancy-free velocity description

The solution for the velocity field in the spinal canal in the absence of buoyancy forces was given in our previous publications (Sánchez *et al.* 2018; Lawrence *et al.* 2019). A summary of the relevant formulae, needed to quantify the steady-streaming and Stokes-drift velocities appearing in the convective terms in (4.14), is given in this appendix.

Buoyancy effects on intrathecal drug delivery

The solution to the leading-order problem (4.1)–(4.4) is given by the harmonic functions (4.5), which are repeated here for convenience:

$$\left. \begin{aligned} u_0 &= \operatorname{Re} \left(i e^{it} U \right), & v_0 &= \operatorname{Re} \left(i e^{it} V \right), & w_0 &= \operatorname{Re} \left(i e^{it} W \right), \\ p'_0 &= \operatorname{Re} \left(e^{it} P' \right), & \hat{p}_0 &= \operatorname{Re} \left(e^{it} \hat{P} \right), & h'_0 &= \operatorname{Re} \left(e^{it} H' \right). \end{aligned} \right\} \quad (\text{A1})$$

The complex functions describing the spatial variations of the velocity components can be written as

$$U = \frac{dP'}{dx} G, \quad (\text{A2})$$

$$W = \frac{1}{\ell} \frac{\partial \hat{P}}{\partial s} G, \quad (\text{A3})$$

$$V = -\frac{1}{\ell} \frac{\partial}{\partial x} \left(\ell \frac{dP'}{dx} \bar{h} \int_0^\eta G d\eta \right) - \frac{1}{\ell} \frac{\partial}{\partial s} \left(\frac{1}{\ell} \frac{\partial \hat{P}}{\partial s} \bar{h} \int_0^\eta G d\eta \right) + \left[\frac{\partial \bar{h}}{\partial x} \frac{dP'}{dx} + \frac{1}{\ell^2} \frac{\partial \bar{h}}{\partial s} \frac{\partial \hat{P}}{\partial s} \right] \eta G, \quad (\text{A4})$$

in terms of the auxiliary functions

$$G = 1 - \frac{\cosh[\Lambda(2\eta - 1)]}{\cosh \Lambda} \quad \text{and} \quad \int_0^\eta G d\bar{\eta} = \eta - \frac{\sinh[\Lambda(2\eta - 1)] + \sinh \Lambda}{2\Lambda \cosh \Lambda}, \quad (\text{A5a,b})$$

where

$$\Lambda(x, s) = \frac{\alpha \bar{h}}{2} \frac{1+i}{\sqrt{2}}. \quad (\text{A6})$$

As in the main text, tildes are used throughout the appendix to denote dummy integration variables. The axial pressure variation is obtained from the boundary-value problem

$$\frac{1}{\ell} \frac{d}{dx} \left[\ell \left(\int_0^1 q ds \right) \frac{dP'}{dx} \right] + (k^2 P' + 1) \int_0^1 \gamma ds = 0, \quad \begin{cases} P' = 0 & \text{at } x = 0, \\ \frac{dP'}{dx} = 0 & \text{at } x = 1, \end{cases} \quad (\text{A7a,b})$$

involving the volume flux function $\int_0^1 q ds$, with

$$q(x, s) = \bar{h} \int_0^1 G d\eta = \bar{h} \left(1 - \frac{\tanh \Lambda}{\Lambda} \right). \quad (\text{A8})$$

The function $P'(x)$ can be used in

$$H' = \gamma(1 + k^2 P') \quad (\text{A9})$$

to evaluate the canal deformation, and in

$$\frac{1}{\ell} \frac{\partial \hat{P}}{\partial s} = -\frac{1}{q} \left[\frac{\partial}{\partial x} \left(\ell \int_0^s q d\bar{s} \frac{dP'}{dx} \right) + \ell(k^2 P' + 1) \int_0^s \gamma ds \right] \quad (\text{A10})$$

to evaluate the azimuthal pressure gradient, thereby completing the solution at leading order.

The steady-streaming velocity components (u_{SS}, v_{SS}, w_{SS}) are obtained by integration of (4.6)–(4.8) with $Ri = 0$. The functions

$$\mathcal{F} = -\frac{1}{\ell} \frac{\partial}{\partial x} (\ell \langle h'_0 u_0 \rangle) + \frac{\partial}{\partial \eta} \left(\eta \left\langle u_0 \frac{\partial h'_0}{\partial x} \right\rangle \right) - \frac{1}{\ell} \frac{\partial}{\partial s} (\langle h'_0 w_0 \rangle), \tag{A11}$$

$$\begin{aligned} \mathcal{F}_x = & \frac{1}{\ell} \frac{\partial}{\partial x} (\ell \langle u_0^2 \rangle) + \frac{1}{\bar{h}} \frac{\partial}{\partial \eta} \langle u_0 v_0 \rangle + \frac{1}{\ell} \frac{\partial}{\partial s} \langle u_0 w_0 \rangle \\ & - \frac{\eta}{\bar{h}} \frac{\partial}{\partial \eta} \left\langle \frac{\partial h'_0}{\partial t} u_0 \right\rangle - \frac{\partial \bar{h}}{\partial x} \frac{\eta}{\bar{h}} \frac{\partial}{\partial \eta} \langle u_0^2 \rangle - \frac{1}{\ell} \frac{\partial \bar{h}}{\partial s} \frac{\eta}{\bar{h}} \frac{\partial}{\partial \eta} \langle u_0 w_0 \rangle + \frac{2}{\bar{h}^3 \alpha^2} \frac{\partial^2}{\partial \eta^2} \langle h'_0 u_0 \rangle \end{aligned} \tag{A12}$$

and

$$\begin{aligned} \mathcal{F}_s = & \frac{\partial}{\partial x} \langle u_0 w_0 \rangle + 2 \frac{\langle u_0 w_0 \rangle}{\ell} \frac{\partial \ell}{\partial x} + \frac{1}{\bar{h}} \frac{\partial}{\partial \eta} \langle v_0 w_0 \rangle + \frac{1}{\ell} \frac{\partial}{\partial s} \langle w_0^2 \rangle - \frac{\eta}{\bar{h}} \frac{\partial}{\partial \eta} \left\langle \frac{\partial h'_0}{\partial t} w_0 \right\rangle \\ & - \frac{\partial \bar{h}}{\partial x} \frac{\eta}{\bar{h}} \frac{\partial}{\partial \eta} \langle u_0 w_0 \rangle - \frac{1}{\ell} \frac{\partial \bar{h}}{\partial s} \frac{\eta}{\bar{h}} \frac{\partial}{\partial \eta} \langle w_0^2 \rangle + \frac{2}{\bar{h}^3 \alpha^2} \frac{\partial^2}{\partial \eta^2} \langle h'_0 w_0 \rangle \end{aligned} \tag{A13}$$

appearing on the left-hand sides of (4.6)–(4.8) involve time averages of products of the leading-order functions (A1) that can be evaluated with use of the identity $\langle \text{Re}(e^{i\tau} f_1) \text{Re}(e^{i\tau} f_2) \rangle = \text{Re}(f_1 f_2^*)/2$, which applies to any pair of time-independent complex functions f_1 and f_2 , with the asterisk $*$ denoting complex conjugate. The solution for the steady-streaming velocity can be expressed in the form

$$\frac{u_{SS}}{\bar{h}^2 \alpha^2} = -\frac{dp'_{SS}}{dx} \frac{(1-\eta)\eta}{2} + \eta \int_0^\eta \mathcal{F}_x d\tilde{\eta} - \int_0^\eta \mathcal{F}_x \tilde{\eta} d\tilde{\eta} - \eta \int_0^1 \mathcal{F}_x (1-\eta) d\eta, \tag{A14}$$

$$\frac{w_{SS}}{\bar{h}^2 \alpha^2} = -\frac{1}{\ell} \frac{\partial \hat{p}_{SS}}{\partial s} \frac{(1-\eta)\eta}{2} + \eta \int_0^\eta \mathcal{F}_s d\tilde{\eta} - \int_0^\eta \mathcal{F}_s \tilde{\eta} d\tilde{\eta} - \eta \int_0^1 \mathcal{F}_s (1-\eta) d\eta, \tag{A15}$$

$$\begin{aligned} v_{SS} = & -\frac{1}{\ell} \frac{\partial}{\partial x} \left(\ell \bar{h} \int_0^\eta u_{SS} d\tilde{\eta} \right) - \frac{1}{\ell} \frac{\partial}{\partial s} \left(\bar{h} \int_0^\eta w_{SS} d\tilde{\eta} \right) + \eta \left[\frac{\partial \bar{h}}{\partial x} u_{SS} + \frac{1}{\ell} \frac{\partial \bar{h}}{\partial s} w_{SS} \right] \\ & + \eta \left\langle u_0 \frac{\partial h'_0}{\partial x} \right\rangle - \frac{1}{\ell} \int_0^\eta \left[\frac{\partial}{\partial x} (\ell \langle h'_0 u_0 \rangle) + \frac{\partial}{\partial s} \langle h'_0 w_0 \rangle \right] d\tilde{\eta} \end{aligned} \tag{A16}$$

in terms of the axial and azimuthal pressure gradients

$$\frac{dp'_{SS}}{dx} = \frac{12}{\int_0^1 \bar{h}^3 ds} \int_0^1 \left(\frac{1}{\alpha^2} \int_0^1 \langle h'_0 u_0 \rangle d\eta - \frac{\bar{h}^3}{2} \int_0^1 \mathcal{F}_x \eta (1-\eta) d\eta \right) ds, \tag{A17}$$

$$\begin{aligned} \frac{1}{\ell} \frac{\partial \hat{p}_{SS}}{\partial s} = & \frac{12}{\bar{h}^3} \frac{\partial}{\partial x} \left[\ell \int_0^s \left(\frac{1}{\alpha^2} \int_0^1 \langle h'_0 u_0 \rangle d\eta - \frac{\bar{h}^3}{2} \int_0^1 \mathcal{F}_x \eta (1-\eta) d\eta - \frac{\bar{h}^3}{12} \frac{dp'_{SS}}{dx} \right) d\tilde{s} \right] \\ & + \frac{12}{\bar{h}^3} \left(\frac{1}{\alpha^2} \int_0^1 \langle h'_0 w_0 \rangle d\eta - \frac{\bar{h}^3}{2} \int_0^1 \mathcal{F}_s \eta (1-\eta) d\eta \right), \end{aligned} \tag{A18}$$

which complete the determination of the steady-streaming velocity. On the other hand, the Stokes-drift velocity components, which provide an additional contribution to the

time-averaged Lagrangian drift driving convective transport in the slow time scale, can be expressed in the form

$$u_{SD} = \frac{1}{\bar{h}} \left\{ \langle u_0 h'_0 \rangle + \frac{1}{\ell} \frac{\partial}{\partial s} \left(\bar{h} \left\langle u_0 \int w_0 dt \right\rangle \right) \right\} + \frac{1}{\bar{h}} \frac{\partial}{\partial \eta} \left\langle u_0 \left[\int v_0 dt - \eta \left(h'_0 + \frac{1}{\ell} \frac{\partial \bar{h}}{\partial s} \int w_0 dt \right) \right] \right\rangle, \quad (\text{A19})$$

$$v_{SD} = \frac{1}{\ell} \frac{\partial}{\partial x} \left(\ell \left\langle v_0 \int u_0 dt \right\rangle \right) + \frac{1}{\ell} \frac{\partial}{\partial s} \left\langle v_0 \int w_0 dt \right\rangle - \frac{\eta}{\bar{h}} \frac{\partial}{\partial \eta} \left\langle v_0 \left(h'_0 + \frac{\partial \bar{h}}{\partial x} \int u_0 dt + \frac{1}{\ell} \frac{\partial \bar{h}}{\partial s} \int w_0 dt \right) \right\rangle, \quad (\text{A20})$$

$$w_{SD} = \frac{1}{\bar{h}} \left[\langle w_0 h'_0 \rangle + \frac{\partial}{\partial x} \left(\bar{h} \left\langle w_0 \int u_0 dt \right\rangle \right) \right] + \frac{1}{\bar{h}} \frac{\partial}{\partial \eta} \left\langle w_0 \left[\int v_0 dt - \eta \left(h'_0 + \frac{\partial \bar{h}}{\partial x} \int u_0 dt \right) \right] \right\rangle, \quad (\text{A21})$$

where the different time averages can be evaluated with use of (A1) and associated antiderivatives $\int u_0 dt = \text{Re}(e^{it}U)$, $\int v_0 dt = \text{Re}(e^{it}V)$, and $\int w_0 dt = \text{Re}(e^{it}W)$.

REFERENCES

- AKTAS, G., KOLLMEIER, J.M., JOSEPH, A.A., MERBOLDT, K.D., LUDWIG, H.C., GÄRTNER, J., FRAHM, J. & DREHA-KULACZEWSKI, S. 2019 Spinal CSF flow in response to forced thoracic and abdominal respiration. *Fluids Barriers CNS* **16**, 10.
- ALAMINOS-QUESADA, J., COENEN, W., GUTIÉRREZ-MONTES, C. & SÁNCHEZ, A.L. 2022 Buoyancy-modulated Lagrangian drift in wavy-walled vertical channels as a model problem to understand drug dispersion in the spinal canal. *J. Fluid Mech.* **949**, A48.
- ALAMINOS-QUESADA, J., GUTIÉRREZ-MONTES, C., COENEN, W. & SÁNCHEZ, A.L. 2023a Stationary flow driven by non-sinusoidal time-periodic pressure gradients in wavy-walled channels. *Appl. Math. Model.* **122**, 693–705.
- ALAMINOS-QUESADA, J., LAWRENCE, J.J., COENEN, W. & SÁNCHEZ, A.L. 2023b Oscillating viscous flow past a streamwise linear array of circular cylinders. *J. Fluid Mech.* **959**, A39.
- AYANSIJI, A.O., GEHRKE, D.S., BARALLE, B., NOZAIN, A., SINGH, M.R. & LINNINGER, A.A. 2023 Determination of spinal tracer dispersion after intrathecal injection in a deformable CNS model. *Front. Physiol.* **14**.
- BHOSALE, Y., PARTHASARATHY, T. & GAZZOLA, M. 2020 Shape curvature effects in viscous streaming. *J. Fluid Mech.* **898**, A13.
- BHOSALE, Y., PARTHASARATHY, T. & GAZZOLA, M. 2022a Soft streaming–flow rectification via elastic boundaries. *J. Fluid Mech.* **945**, R1.
- BHOSALE, Y., VISHWANATHAN, G., UPADHYAY, G., PARTHASARATHY, T., JUAREZ, G. & GAZZOLA, M. 2022b Multicurvature viscous streaming: flow topology and particle manipulation. *Proc. Natl Acad. Sci. USA* **119** (36), e2120538119.
- BOTTROS, M.M. & CHRISTO, P.J. 2014 Current perspectives on intrathecal drug delivery. *J. Pain Res.* **7**, 615–626.
- BUCHSER, E., DURRER, A., CHDEL, D. & MUSTAKI, J. 2004 Efficacy of intrathecal bupivacaine: how important is the flow rate? *Pain Med.* **5**, 248–252.
- CALIAS, P., *et al.* 2012 CNS penetration of intrathecal-lumbar idursulfase in the monkey, dog and mouse: implications for neurological outcomes of lysosomal storage disorder. *PLoS One* **7** (1), e30341.
- CHAMBERS, W.A., EDSTROM, H.H. & SCOTT, D.B. 1981 Effect of baricity on spinal anaesthesia with bupivacaine. *Brit. J. Anaesth.* **53** (3), 279–282.
- COENEN, W., GUTIÉRREZ-MONTES, C., SINCOMB, S., CRIADO-HIDALGO, E., WEI, K., KING, K., HAUGHTON, V., MARTÍNEZ-BAZÁN, C., SÁNCHEZ, A.L. & LASHERAS, J.C. 2019 Subject-specific

- studies of CSF bulk flow patterns in the spinal canal: implications for the dispersion of solute particles in intrathecal drug delivery. *Am. J. Neuroradiol.* **40** (7), 1242–1249.
- CUI, S., BHOSALE, Y. & GAZZOLA, M. 2024 Three-dimensional soft streaming. *J. Fluid Mech.* **979**, A7.
- DE ANDRES, J., HAYEK, S., PERRUCHOUD, C., LAWRENCE, M.M., REINA, M.A., DE ANDRES-SERRANO, C., RUBIO-HARO, R., HUNT, M. & YAKSH, T.L. 2022 Intrathecal drug delivery: advances and applications in the management of chronic pain patient. *Front. Pain Res.* **3**.
- DI CHIRO, G. 1964 Movement of the cerebrospinal fluid in human beings. *Nature* **204**, 290–291.
- FOWLER, M.J., COTTER, J.D., KNIGHT, B.E., SEVICK-MURACA, E.M., SANDBERG, D.I. & SIRIANNI, R.W. 2020 Intrathecal drug delivery in the era of nanomedicine. *Adv. Drug Deliv. Rev.* **165–166**, 77–95.
- GREENE, N.M. 1985 Distribution of local anesthetic solutions within the subarachnoid space. *Anesth. Analg.* **64** (7), 715–730.
- GREITZ, D., FRANCK, A. & NORDELL, B. 1993 On the pulsatile nature of intracranial and spinal CSF-circulation demonstrated by MR imaging. *Acta Radiol.* **34** (4), 321–328.
- GREITZ, D. & HANNERZ, J. 1996 A proposed model of cerebrospinal fluid circulation: observations with radionuclide cisternography. *AJNR Am. J. Neuroradiol.* **17** (3), 431–438.
- GUAN, M., JIANG, W., WANG, B., ZENG, L., LI, Z. & CHEN, G. 2023 Pre-asymptotic dispersion of active particles through a vertical pipe: the origin of hydrodynamic focusing. *J. Fluid Mech.* **962**, A14.
- GUIBERT, R., PLOURABOÛÉ, F. & BERGEON, A. 2010 Steady streaming confined between three-dimensional wavy surfaces. *J. Fluid Mech.* **657**, 430–455.
- GUPTA, S., SOELLINGER, M., BOESIGER, P., POULIKAKOS, D. & KURTCUOGLU, V. 2008 Three-dimensional computational modeling of subject-specific cerebrospinal fluid flow in the subarachnoid space. *Trans. ASME J. Biomech. Engng* **131** (2), 021010.
- GUTIÉRREZ-MONTES, C., COENEN, W., LAWRENCE, J.J., MARTÍNEZ-BAZÁN, C., SÁNCHEZ, A.L. & LASHERAS, J.C. 2021 Modelling and direct numerical simulation of flow and solute dispersion in the spinal subarachnoid space. *Appl. Math. Model.* **94**, 516–533.
- GUTIÉRREZ-MONTES, C., COENEN, W., VIDORRETA, M., SINCOMB, S., MARTÍNEZ-BAZÁN, C., SÁNCHEZ, A.L. & HAUGHTON, V. 2022 Effect of normal breathing on the movement of CSF in the spinal subarachnoid space. *AJNR Am. J. Neuroradiol.* **43** (9), 1369–1374.
- HAGA, P.T., PIZZICHELLI, G., MORTENSEN, M., KUCHTA, M., PAHLAVIAN, S.H., SINIBALDI, E., MARTIN, B.A. & MARDAL, K. 2017 A numerical investigation of intrathecal isobaric drug dispersion within the cervical subarachnoid space. *PLoS One* **12** (3), 1–21.
- HALLWORTH, S.P., FERNANDO, R., COLUMB, M.O. & STOCKS, G.M. 2005 The effect of posture and baricity on the spread of intrathecal bupivacaine for elective cesarean delivery. *Anesth. Analg.* **100** (4), 1159–1165.
- HAUGHTON, V. & MARDAL, K.-A. 2014 Spinal fluid biomechanics and imaging: an update for neuroradiologists. *AJNR Am. J. Neuroradiol.* **35** (10), 1864–1869.
- HEJTMANEK, M.R., HARVEY, T.D. & BERNARDS, C.M. 2011 Measured density and calculated baricity of custom-compounded drugs for chronic intrathecal infusion. *Reg. Anesth. Pain Med.* **36** (1), 7–11.
- HETTIARACHCHI, H.D.M., HSU, Y., HARRIS, T.J. & LINNINGER, A.A. 2011 The effect of pulsatile flow on intrathecal drug delivery in the spinal canal. *Ann. Biomed. Engng* **39** (10), 2592–2602.
- HOCKING, G. & WILDSMITH, J.A.W. 2004 Intrathecal drug spread. *Brit. J. Anaesth.* **93** (4), 568–578.
- HOUSE, T.A., LIEU, V.H. & SCHWARTZ, D.T. 2014 A model for inertial particle trapping locations in hydrodynamic tweezers arrays. *J. Micromech. Microengng* **24** (4), 045019.
- HSU, Y., HETTIARACHCHI, H.D.M., ZHU, D.C. & LINNINGER, A.A. 2012 The frequency and magnitude of cerebrospinal fluid pulsations influence intrathecal drug distribution: key factors for interpatient variability. *Anesth. Analg.* **115**, 386–394.
- KAMRAN, S. & WRIGHT, B.D. 2001 Complications of intrathecal drug delivery systems. *Neuromodulation* **4**, 111–115.
- KELLEY, D.H. & THOMAS, J.H. 2023 Cerebrospinal fluid flow. *Annu. Rev. Fluid Mech.* **55** (1), 237–264.
- KHANI, M., BURLA, G.K.R., SASS, L.R., ARTERS, O.N., XING, T., WU, H. & MARTIN, B.A. 2022 Human *in silico* trials for parametric computational fluid dynamics investigation of cerebrospinal fluid drug delivery: impact of injection location, injection protocol, and physiology. *Fluids Barriers CNS* **19** (1), 8.
- KHANI, M., SASS, L.R., XING, T., SHARP, M.K., BALÉDENT, O. & MARTIN, B.A. 2018 Anthropomorphic model of intrathecal cerebrospinal fluid dynamics within the spinal subarachnoid space: spinal cord nerve roots increase steady-streaming. *J. Biomech. Engng* **140** (8), 081012.
- KUTTLER, A., DIMKE, T., KERN, S., HELMLINGER, G., STANSKI, D. & FINELLI, L.A. 2010 Understanding pharmacokinetics using realistic computational models of fluid dynamics: biosimulation of drug distribution within the CSF space for intrathecal drugs. *J. Pharmacokin. Phar.* **37**, 629–644.

Buoyancy effects on intrathecal drug delivery

- LAWRENCE, J.J., COENEN, W., SÁNCHEZ, A.L., PAWLAK, G., MARTÍNEZ-BAZÁN, C., HAUGHTON, V. & LASHERAS, J.C. 2019 On the dispersion of a drug delivered intrathecally in the spinal canal. *J. Fluid Mech.* **861**, 679–720.
- LEE, Y.C., HSIEH, C.C., CHUANG, J.P. & LI, C.Y. 2017 The necessity of intrathecal chemotherapy for the treatment of breast cancer patients with leptomeningeal metastasis: a systematic review and pooled analysis. *Curr. Probl. Cancer* **41**, 355–370.
- LINNINGER, A.A., BARUA, D., HANG, Y., IADEVAIA, S. & VAKILYNEJAD, M. 2023 A mechanistic pharmacokinetic model for intrathecal administration of antisense oligonucleotides. *Front. Physiol.* **14**, 1130925.
- LINNINGER, A.A., TANGEN, K., HSU, C.Y. & FRIM, D. 2016 Cerebrospinal fluid mechanics and its coupling to cerebrovascular dynamics. *Annu. Rev. Fluid Mech.* **48**, 219–257.
- LOUBERT, C., HALLWORTH, S., FERNANDO, R., COLUMB, M., PATEL, N., SARANG, K. & SODHI, V. 2011 Does the baricity of bupivacaine influence intrathecal spread in the prolonged sitting position before elective cesarean delivery? A prospective randomized controlled study. *Anesth. Analg.* **113** (4), 811–817.
- LUI, A.C.P., POLIS, T.Z. & CICUTTI, N.J. 1998 Densities of cerebrospinal fluid and spinal anaesthetic solutions in surgical patients at body temperature. *Can. J. Anaesth.* **45** (4), 297–303.
- LYNCH, L. 2014 Intrathecal drug delivery systems. *BJA Educ.* **14**, 27–31.
- MCLEOD, G.A. 2004 Density of spinal anaesthetic solutions of bupivacaine, levobupivacaine, and ropivacaine with and without dextrose. *Brit. J. Anaesth.* **92** (4), 547–551.
- MITCHELL, R.W.D., BOWLER, G.M.R., SCOTT, D.B. & EDSTRÖM, H.H. 1988 Effects of posture and baricity on spinal anaesthesia with 0.5 % bupivacaine 5 ml. *Brit. J. Anaesth.* **61** (2), 139–143.
- MORAL-PULIDO, F., JIMÉNEZ-GONZÁLEZ, J.I., GUTIÉRREZ-MONTES, C., COENEN, W., SÁNCHEZ, A.L. & MARTÍNEZ-BAZÁN, C. 2023 *In vitro* characterization of solute transport in the spinal canal. *Phys. Fluids* **35** (5), 051905.
- MORTAZAVI, M.M., *et al.* 2018 Subarachnoid trabeculae: a comprehensive review of their embryology, histology, morphology, and surgical significance. *World Neurosurg.* **111**, 279–290.
- MYERS, M.R. 1996 A numerical investigation into factors affecting anesthetic distribution during spinal anesthesia. *J. Biomech.* **29** (2), 139–149.
- NICOL, M.E. & HOLDCROFT, A. 1992 Density of intrathecal agents. *Brit. J. Anaesth.* **68** (1), 60–63.
- ONOFRIO, B.M., YAKSH, T.L. & ARNOLD, P.G. 1981 Continuous low-dose intrathecal morphine administration in the treatment of chronic pain of malignant origin. *Mayo Clin. Proc.* **56**, 516–520.
- PAHLAVIAN, S.H., YIALLOUROU, T., TUBBS, R.S., BUNCK, A.C., LOTH, F., GOODIN, M., RAISEE, M. & MARTIN, B.A. 2014 The impact of spinal cord nerve roots and denticulate ligaments on cerebrospinal fluid dynamics in the cervical spine. *PLoS One* **9** (4), e91888.
- PARDRIDGE, W.M. 2011 Drug transport in brain via the cerebrospinal fluid. *Fluids Barriers CNS* **8**, 7.
- PATEL, T., ZHOU, J., PIEPMEIER, J.M. & SALTZMAN, W.M. 2012 Polymeric nanoparticles for drug delivery to the central nervous system. *Adv. Drug Deliv. Rev.* **64** (7), 701–705.
- POLLAY, M. 2010 The function and structure of the cerebrospinal fluid outflow system. *Cerebrospinal Fluid Res.* **7** (1), 9.
- POVEY, H.M.R., JACOBSEN, J. & WESTERGAARD-NIELSEN, J. 1989 Subarachnoid analgesia with hyperbaric 0.5 % bupivacaine: effect of a 60-min period of sitting. *Acta Anaesthesiol. Scand.* **33** (4), 295–297.
- REMEŠ, F., TOMÁŠ, R., JINDRÁK, V., VANIŠ, V. & SETLÍK, M. 2013 Intraventricular and lumbar intrathecal administration of antibiotics in postneurosurgical patients with meningitis and/or ventriculitis in a serious clinical state. *J. Neurosurg.* **119**, 1596–1602.
- RICHARDSON, M.G., THAKUR, R., ABRAMOWICZ, J.S. & WISSLER, R.N. 1996 Maternal posture influences the extent of sensory block produced by intrathecal dextrose-free bupivacaine with fentanyl for labor analgesia. *Anesth. Analg.* **83** (6), 1229–1233.
- SÁNCHEZ, A.L., MARTÍNEZ-BAZÁN, C., GUTIÉRREZ-MONTES, C., CRIADO-HIDALGO, E., PAWLAK, G., BRADLEY, W., HAUGHTON, V. & LASHERAS, J.C. 2018 On the bulk motion of the cerebrospinal fluid in the spinal canal. *J. Fluid Mech.* **841**, 203–227.
- SARNTINORANONT, M., BANERJEE, R.K., LONER, R.R. & MORRISON, P.F. 2003 A computational model of direct interstitial infusion of macromolecules into the spinal cord. *Ann. Biomed. Engng* **31** (4), 448–461.
- SEGAL, J.L. & BRUNNEMANN, S.R. 1989 Clinical pharmacokinetics in patients with spinal cord injuries. *Clin. Pharmacokinet.* **17** (2), 109–129.
- SEINER, A., BURLA, G.K.R., SHRESTHA, D., BOWEN, M., HORVATH, J.D. & MARTIN, B.A. 2022 Investigation of human intrathecal solute transport dynamics using a novel *in vitro* cerebrospinal fluid system analog. *Front. Neuroimaging* **1**, 879098.

- SINCOMB, S., COENEN, W., GUTIÉRREZ-MONTES, C., MARTÍNEZ BAZÁN, C., HAUGHTON, V. & SÁNCHEZ, A.L. 2022 A one-dimensional model for the pulsating flow of cerebrospinal fluid in the spinal canal. *J. Fluid Mech.* **939**, A26.
- STOCKMAN, H.W. 2006 Effect of anatomical fine structure on the flow of cerebrospinal fluid in the spinal subarachnoid space. *J. Biomech. Engng* **128** (1), 106–114.
- TANGEN, K., LEVAL, R., MEHTA, A.I. & LINNINGER, A.A. 2017 Computational and *in vitro* experimental investigation of intrathecal drug distribution: parametric study of the effect of injection volume, cerebrospinal fluid pulsatility, and drug uptake. *Anesth. Analg.* **124**, 1.
- TANGEN, K., NESTOROV, I., VERMA, A., SULLIVAN, J., HOLT, R.W. & LINNINGER, A.A. 2019 *In vivo* intrathecal tracer dispersion in cynomolgus monkey validates wide biodistribution along neuraxis. *IEEE Trans. Biomed. Engng* **67** (4), 1122–1132.
- TANGEN, K.M., HSU, Y., ZHU, D.C. & LINNINGER, A.A. 2015 CNS wide simulation of flow resistance and drug transport due to spinal microanatomy. *J. Biomech.* **48** (10), 2144–2154.
- VEERING, B.T., IMMINK-SPEET, T.T.M., BURM, A.G.L., STIENSTRA, R. & VAN KLEEF, J.W. 2001 Spinal anaesthesia with 0.5% hyperbaric bupivacaine in elderly patients: effects of duration spent in the sitting position. *Brit. J. Anaesth.* **87** (5), 738–742.
- WALLACE, M. & YAKSH, T.L. 2012 Characteristics of distribution of morphine and metabolites in cerebrospinal fluid and plasma with chronic intrathecal morphine infusion in humans. *Anesth. Analg.* **115**, 797–804.
- WATSON, E.J. 1983 Diffusion in oscillatory pipe flow. *J. Fluid Mech.* **133**, 233–244.
- WILDSMITH, J.A.W., MCCLURE, J.H., BROWN, D.T. & SCOTT, D.B. 1981 Effects of posture on the spread of isobaric and hyperbaric amethocaine. *Brit. J. Anaesth.* **53** (3), 273–278.