

Research Article

Cite this article: Jones SM, Cumming GS, Peters JL (2018). Host community heterogeneity and the expression of host specificity in avian haemosporidia in the Western Cape, South Africa. *Parasitology* **145**, 1876–1883. <https://doi.org/10.1017/S0031182018000665>

Received: 22 November 2017
Revised: 22 March 2018
Accepted: 23 March 2018
First published online: 16 May 2018

Key words:

Haemoproteus; host neutrality; host specificity; *Leucocytozoon*; malaria; parasite; *Plasmodium*

Author for correspondence:

Sharon M. Jones, E-mail: sokanga@gmail.com

Host community heterogeneity and the expression of host specificity in avian haemosporidia in the Western Cape, South Africa

Sharon M. Jones¹, Graeme S. Cumming^{1,2} and Jeffrey L. Peters³

¹Percy FitzPatrick Institute, DST/NRF Centre of Excellence, University of Cape Town, Rondebosch, Cape Town 7701, South Africa; ²ARC Centre of Excellence in Coral Reef Studies, Townsville, Queensland 4811, Australia and ³Department of Biological Sciences, Wright State University, 3640 Colonel Glenn Highway, Dayton, OH 45435, USA

Abstract

Similar patterns of parasite prevalence in animal communities may be driven by a range of different mechanisms. The influences of host heterogeneity and host–parasite interactions in host community assemblages are poorly understood. We sampled birds at 27 wetlands in South Africa to compare four hypotheses explaining how host community heterogeneity influences host specificity in avian haemosporidia communities: the host-neutral hypothesis, the super-spreader hypothesis, the host specialist hypothesis and the heterogeneity hypothesis. A total of 289 birds (29%) were infected with *Plasmodium*, *Haemoproteus* and/or *Leucocytozoon* lineages. *Leucocytozoon* was the most diverse and generalist parasite genus, and *Plasmodium* the most conservative. The host-neutral and host specialist hypotheses received the most support in explaining prevalence by lineage (*Leucocytozoon*) and genus (*Plasmodium* and *Haemoproteus*), respectively. We observed that haemosporidian prevalence was potentially amplified or reduced with variation in host and/or parasitic taxonomic levels of analysis. Our results show that *Leucocytozoon* host abundance and diversity was influential to parasite prevalence at varying taxonomic levels, particularly within heterogeneous host communities. Furthermore, we note that prevalent mechanisms of infection can potentially act as distinct roots for shaping communities of avian haemosporidia.

Introduction

Despite many recent advances, understanding of the underlying causes of disease dynamics in wild animal communities remains relatively superficial. The complex patterns seen in nature result in part from the interdependence of hosts, parasites and their multi-scale interactions with the local environment (Keesing *et al.* 2010). As Ludwig *et al.* (1978) first demonstrated, systems with three or more levels that operate at different speeds have the potential to show complex behaviours. In host-vector-parasite systems, additional complexity arises from heterogeneity, which occurs in the environment, between individuals (behaviours, physiology and immune systems), and in the level of host specificity or generality evidenced by parasites. Unravelling the complexities of host-vector-parasite systems thus demands careful comparative analysis across a wide range of different systems and scales (Levin, 1992; Tompkins *et al.* 2011).

Several alternative hypotheses have been proposed to explain host-driven variance in community-level parasite prevalence. First, the host-neutral hypothesis (H1) proposes that for more generalist parasites, hosts may be relatively interchangeable and successful infections will be driven by net host abundance (Gaston, 1996). Second, the super-spreader hypothesis (H2) predicts that for both generalists and partial specialists, prevalence is primarily driven by a highly susceptible host species, despite infections occurring in many different hosts (Read and Taylor, 2001; Bell *et al.* 2006). Third, the specialist hypothesis (H3) postulates that for more specialized parasites, prevalence within a community is determined primarily by a selected number of strong individual host–parasite relationships (Ricklefs, 1992). Lastly, the heterogeneity hypothesis (H4) predicts that some generalist parasites may be more or less infectious at different times of the year or in different habitats, leading to a spatial correlation between hosts and parasites and links between diversity and prevalence (Altizer *et al.* 2006). This hypothesis suggests that parasite prevalence is primarily contingent on the influence of the external biophysical environment on host or vector populations.

One approach to the analysis of complex systems is to adopt a semi-controlled design, in which potentially confounding variables are held constant while allowing one or two key drivers to vary. In this paper, we explore the influence of heterogeneity in host specificity on infection prevalence. To test these hypotheses in a single system, we compared the infection prevalence of avian haemosporidia parasites (genera *Plasmodium*, *Haemoproteus* and *Leucocytozoon*) in wetland passerine communities in the Western Cape, South Africa. *Plasmodium* parasites tend towards a host neutral mode of infection (Bensch *et al.* 2009; Hellgren *et al.* 2009; Hellgren *et al.* 2013), whereas *Haemoproteus* sp. exhibit a more host

specialist approach (Bensch *et al.* 2000); however, lineages within both genera still display great flexibility in host range (Ricklefs, 2004; Syzanski and Lovette, 2005). Several studies have described *Plasmodium* and *Haemoproteus* infection patterns in the sub-Saharan region (Cumming *et al.* 2013; Hellard *et al.* 2016), but fewer contain additional information on *Leucocytozoon* infections (Schultz *et al.* 2011; Lutz *et al.* 2015). Although *Haemoproteus* and *Leucocytozoon* infections are generally less virulent than *Plasmodium*, and their host generality and vectors differ (Valkiūnas, 2005), their occurrences in the same locations and host communities (Okanga *et al.* 2013a; Galen and Witt, 2014) allow us to draw inferences about the relative importance of host preference (Fig. 1).

Methods

Study area

Fieldwork was conducted in 2010 and 2011 across 27 sites within the Western Cape province, South Africa. Okanga *et al.* (2013b) describe 26 of the study sites, and samples from an additional site were also included in this study (see Supplementary Table 2). Wetlands were chosen as study sites, as they are resource-rich and key habitats for a large variety of birds, with a high diversity of avifauna (Haig, Mehlman and Oring, 1998; Paracuellos and Tellería, 2004), as well as providing suitable habitat for mosquitoes and other vectors of Haemosporidia. To account for seasonal variation, all sites were sampled once in summer (January–March) and once in winter (July–August).

Bird trapping and blood sampling

Birds were trapped using mist nets. Although efforts were focused on wetland passerines, all trapped birds were sampled. Blood samples were taken from the brachial vein and transferred into a 2.0 mL vial containing 1.8 mL of lysis buffer solution made up of 1 M Tris-HCL pH 8.0, 0.5 M EDTA, 5 M NaCl, 10% Sodium lauryl Sulfate (SDS) and distilled H₂O. The vial was sealed and the sample stored for processing. All birds were released after sampling. Blood samples in vials were then sent for molecular [polymerase chain reaction (PCR)] analysis between 2 and 20 months after their collection.

Molecular analysis

Previously isolated cytochrome b (cyt b) lineages for *Plasmodium* and *Haemoproteus* (Okanga *et al.* 2014) were submitted the MalAvi and Genbank databases and listed under accession numbers KU375886.1 to KU376086.1. Adjustments to a prior molecular protocol (see Cumming *et al.* 2013) enabled the further detection of *Leucocytozoon* lineages (accession numbers KY448798–KY448992). We used the primers and nested PCR protocol described in Hellgren *et al.* (2004) to specifically target *Leucocytozoon* sequences. In brief, primers HaemNFI and HaemNR3 were used to amplify the mitochondrial DNA cyt b gene from all three genera of avian haemosporidian parasites (*Haemoproteus*, *Plasmodium* and *Leucocytozoon*). Then we used the primers, HaemFL and HaemR2L, to target a 478 bp fragment from *Leucocytozoon* sequences that were homologous with our previous sequences obtained for *Plasmodium* and *Haemoproteus*. PCR was run with a negative control to test for the possibility of contamination, and two trials were conducted for each sample. Forward and reverse sequences were aligned and edited using Sequencher (Gene Codes Corporation, Ann Arbor, MI, USA).

Co-infections involving two lineages of *Leucocytozoon* spp. were identified by the presence of heterozygous nucleotide positions (i.e. double peaks) in the chromatograms of the DNA sequences. The lineages present in co-infections were determined using the program PHASE v.2 (Stephens *et al.* 2001). For these reconstructions, one representative of each lineage was included in the analysis as a 'known' sample to aid in resolving the heterozygous sites. In the event that PHASE resolved the lineages with <90% confidence, we treated the sequence as unresolved in our data analysis.

All sequences were separately run through the Basic Local Alignment Search Tool (BLAST; Zhang *et al.* 2000) in Genbank and MalAvi databases to identify and match sample sequences with existing lineages. A match was described as when 100% correspondence occurred between base pair identities of sample sequences and an existing lineage, with matching samples labelled in accordance with the MalAvi naming protocol. Undefined sample sequences (all *Leucocytozoon* infections, listed as unknown in the MalAvi database) were subsequently labelled in ascending order as LUK1, LUK2, etc. (see Supplementary Table 1 and Supplementary Fig. I).

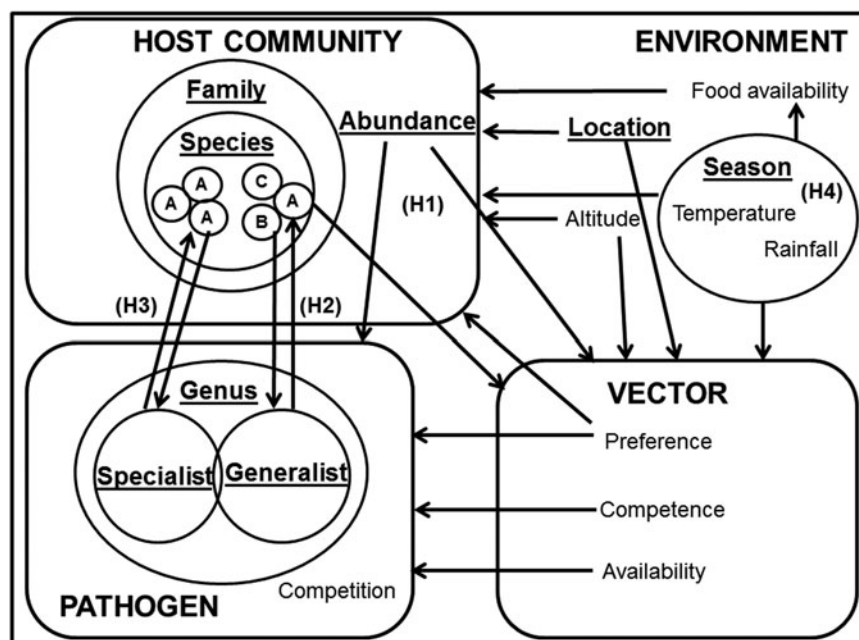


Fig. 1. Key factors in avian haemosporidian infection systems. Key factors are underlined, and focal drivers of infection highlighted as H1 (infection driven by host abundance); H2 (infection driven by host species susceptibility); H3 (infection driven by co-evolutionary host-parasite ties) and H4 (infection driven by environmental factors). The hypotheses are not intended to be mutually exclusive; rather, the focus was on determining the dominance of these infection pathways.

Bird counts and host abundance

Point counts were conducted in 26 sites to assess relative community abundance and composition across sites and seasons (Sutherland, 2006). Each count was undertaken close to the shoreline and from a location where most of the wetland could be seen. All birds seen or heard within a half-circle of 100 m radius (i.e. 15 707 m²) facing the wetland were recorded. A 10-min habituation period preceded every count, and the actual count lasted 20 min. Two counts were conducted during each site visit between the daylight hours of 05h30–18h00.

Statistical analysis

Statistical analysis was conducted in R version 3.3.1 (R Core Team, 2017), with significance (*P*) set at a probability of ≤0.05.

Host susceptibility and super-spreader hypotheses

Parasite prevalence was given as (i) genus prevalence – the number of birds infected by *Plasmodium* spp., *Haemoproteus* spp. or *Leucocytozoon* spp.; (ii) lineage prevalence – the number of individual infections per parasite genus, and (iii) site prevalence – the proportion of infected birds per site. Host susceptibility to infection was broadly assessed by the prevalence of co-infections (>1 lineage in the same host) per host species. Chi-squared tests of given proportions (χ^2) and ANOVAs were used to compare variations in infection prevalence.

Host specificity hypothesis

We used cluster analysis to group parasites according to shared patterns of infection. Cluster analysis was run in R using the packages cluster 2.05 (Maechler *et al.* 2016) and factoextra 1.0.3 (Kassambara, 2016). An optimal number of clusters was determined using k-means partitioning (MacQueen, 1967) to form groups around shared means; subsequent clusters were then plotted using principal components analysis in the ggfortify package (Horikoshi, 2016). The weighted components of host diversity (number of species infected) and host preference (parasite STD* index or host taxonomic diversity) were used as factors of interest, where the STD* index is a measure of parasite-host specificity (Poulin and Mouillot, 2005). Lineages infecting multiple hosts from one species were assigned a default STD* value of 1, whereas lineages infecting in a singular once-off fashion (hereafter referred to as 'spot infections') were excluded from analysis. Analysis of genus STD* indices was conducted including and excluding birds from the Ploceidae family, due to the fact that Ploceidae birds were prominently sampled and infected (Okanga *et al.* 2013a), and therefore may have exerted some bias on the outcome of genus STD* indices. We used Welch's two-sample *t*-test to then compare variations in host specificity between all infections and the subset of infections (excluding Ploceidae) within and between each genus.

Host neutrality hypothesis

We used data from 23 sites out of 27 for analysis of host abundance: sites with count or infection data for only one season (*n* = 3), and sites with no infection (*n* = 1) were omitted from analysis. Also excluded were host species/families that (i) had no count/sample data in a given season, or (ii) had a sample size of ≤20 (mean sample size from the selected 23 sites). Relative site abundance was computed for host species and host families as the proportion of individuals per host species/family from mean site count (standardized by number of counts per site).

Shannon's index of diversity (Shannon, 1948) was calculated as a relative measure of host distribution and availability across sites; Shannon's index (*H*) is defined as:

$$H = -\sum S - (P_x * \log P_x)$$

Where *P_x* = proportion of species/family *x* per site and *S* = number of species. *H* was calculated for each site (*H_{si}*) and also as a mean for host species/family diversity across sites (*H_s*).

Relationships between host abundance/diversity and parasite species/genus prevalence were analysed using Mantel tests (vegan 2.4–1 package; Oksanen, 2015). Standardized Bray-Curtis matrices of *Plasmodium*, *Haemoproteus* and *Leucocytozoon* genus and lineage prevalence were run against respective matrices of host abundance and host diversity (at species and family level). Mantel tests were run including and excluding dominant lineages, to determine whether infection patterns were notably influenced by individual lineages. Bonferroni's correction was applied to critical *P* values to avoid type I errors (Dunn, 1961).

Heterogeneity hypothesis

Generalized linear models were used to examine locational variance in genus prevalence and lineage prevalence. Models were fitted with a negative binomial link corresponding to the nature of prevalence distributions, with variation in sample size corrected for by logging birds sample and total infections per site as an offset function in the genus and lineage models, respectively (Gelman and Hill, 2007). Models for genus and lineage prevalence were run using season, site diversity, site count and location (the sum product of site coordinates) as predictors. The predictive power of each variable in the null model was determined using chi-squared analysis of deviance (χ^2).

Results

A total of 289 birds (29%) out of 986 sampled were infected with avian haemosporidia: 190 birds sampled in summer were infected (66%) compared with 99 in winter (34%). Infected birds comprised 25 species from 17 families (see Supplementary Figs II and III). Host species prevalence varied significantly with season for *Haemoproteus* infections ($F_{1,47} = 4.29$; *P* = 0.04) and *Leucocytozoon* infections ($F_{1,47} = 6.67$; *P* = 0.01), which were more prevalent in summer. Seasonal variance in host family prevalence was also significant for *Haemoproteus* infections ($F_{1,32} = 4.02$; *P* = 0.05). Fifty-two lineages were recovered, comprising 11 *Plasmodium*, 9 *Haemoproteus* and 32 *Leucocytozoon* lineages. Six *Leucocytozoon* lineages and 1 *Haemoproteus* lineage were isolated for the first time in this study. Altogether a total of 394 individual infections were recovered (266 in summer and 128 infections in winter).

Genus infection trends

Plasmodium infections occurred in 165 birds (20 species and 13 families), and comprised 168 individual lineage infections (43% of recovered lineages); most individual infections within the *Plasmodium* genus (>80%) were attributable to two lineages (PLOVEL01 and LINOLI01). *Leucocytozoon* infections occurred in 179 birds (21 species and 14 families) and comprised 193 individual lineage infections (49% of recovered lineages). *Leucocytozoon* infections were also the only infection type occurring in non-passerines and it was the most diverse genus in terms of lineages (*n* = 32). In comparison, *Haemoproteus* infections occurred in just 33 birds (9 species and 7 families) and comprised 33 individual lineage infections (8% of recovered lineages).

With the inclusion of Ploceidae birds, *Plasmodium* ranked as the most conservative genus in terms of host taxonomic diversity, whereas *Leucocytozoon* was the most generalist genus (Fig. 2). However, when Ploceidae birds were excluded, this trend was significantly reversed – resulting in *Plasmodium* ranking as the most generalist genus and *Leucocytozoon* as the most conservative (Fig. 2). Excluding Ploceidae birds did not create notable variation in host specificity (STD* index) overall; however, the variation was significant within the *Plasmodium* genus ($t = -6.67$; $P < 0.01$) and *Leucocytozoon* genus ($t = 5.44$; $P < 0.01$). *Leucocytozoon* infections followed two notable patterns: prominent infection by one lineage (RECOB3 – 53%), and several spot infections caused by multiple lineages (Supplementary Table I).

Lineage infection trends

Lineage prevalence and diversity were significantly higher in summer ($F_{1,47} = 7.65$; $P < 0.01$), particularly for *Plasmodium* lineages ($F_{1,47} = 6.69$; $P = 0.01$) and *Haemoproteus* lineages ($F_{1,47} = 7.35$; $P < 0.01$). Co-infections comprised 49% of all infections; co-infection prevalence varied significantly between species, and was highest in Ploceidae birds (weavers) ($\chi^2 = 14.86$; $P = 0.002$). *Plasmodium* and *Leucocytozoon* spp. were tightly associated, forming the bulk of co-infections ($r^2 = 0.92$; $P < 0.01$), with *Haemoproteus* spp. comprising 35% of co-infections (exclusively with *Leucocytozoon* spp.).

Cluster analysis identified four parasite communities linked by mechanisms of infection common to lineages in each cluster (Fig. 3A). Cluster one infections (4 *Plasmodium*, 2 *Haemoproteus* and 9 *Leucocytozoon*) displayed a lower host taxonomic diversity (Fig. 3C), with many lineages in this cluster also forming co-infections (51%). Cluster one infections also showed significant seasonal variation with higher prevalence in summer ($F_{1,38} = 4.40$; $P = 0.04$; see Fig. 3C), and were susceptible to site species diversity ($F_{1,42} = 6.94$; $P = 0.01$). Cluster two contained one *Plasmodium* lineage that was highly host specific (93% of infections were in Ploceidae birds) and also susceptible to site species diversity ($F_{1,42} = 5.07$; $P = 0.03$). Cluster three and Cluster one were comparable in terms of number of hosts and species infected (Fig. 3B); however, Cluster three contained fewer lineages (1 *Plasmodium*, 3 *Haemoproteus* and 2 *Leucocytozoon*) that were less host specific, and more consistent in infection prevalence between seasons. Cluster four infections (caused by 1 *Plasmodium* and 1 *Leucocytozoon* lineage) featured prominently

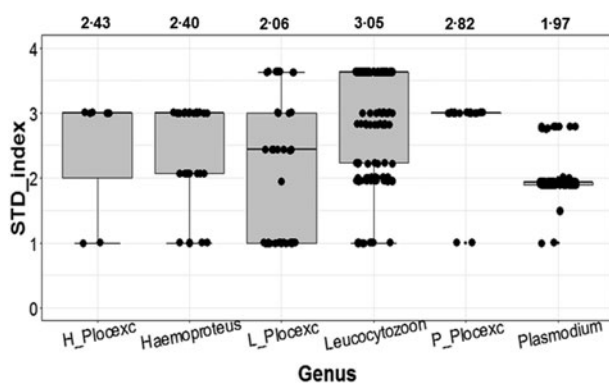


Fig. 2. Variation in calculated STD* indices (STD* index being a measure of parasite-host specificity) for genera of avian haemosporidia. Outcomes show variation in host specificity for outcomes including birds from the Ploceidae family (*Haemoproteus*; *Leucocytozoon* and *Plasmodium*); and excluding Ploceidae birds (*H_Plocexc*; *L_Plocexc* and *P_Plocexc*). Mean STD* is shown above for each genus and genus subset. Variation was significant between genera overall ($\chi^2 = 6.36$; $P = 0.04$), and also significant for *Plasmodium* and *Leucocytozoon* with and without Ploceidae birds.

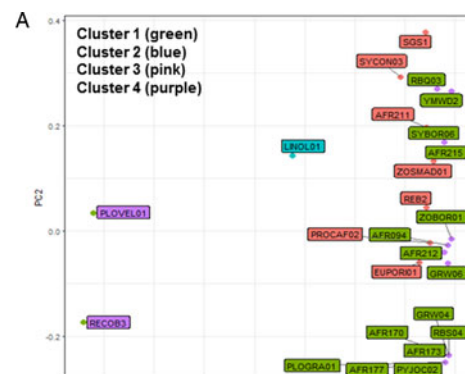
in observed infections – both lineages were also dominant within the *Plasmodium* and *Leucocytozoon* genus profiles, respectively. Cluster four infections also displayed seasonal variation, with higher prevalence in winter ($F_{1,38} = 13.38$; $P < 0.01$).

Host abundance and diversity

Host species and family abundance had little effect on either *Plasmodium* or *Haemoproteus* infections. Due to the small number of *Haemoproteus* infections in winter months ($n = 6$), any associations were seen as spurious and were disregarded. However, *Leucocytozoon* genus infections were affected by host species abundance, with this effect seen during summer months (Table 1). A significant correlation of *Leucocytozoon* infections and host family abundance also occurred during winter months, after exclusion of infections caused by dominant lineage RECOB3. As with abundance, host species/family diversity was influential only to *Leucocytozoon* infections, with a significant association observed with species diversity in summer and family diversity in winter, after exclusion of RECOB3 infections (Table 1).

Site infection trends

Prevalence varied significantly with season for all parasite genera (Fig. 4); there was also significant variation by site overall ($F_{23,24} = 3.16$; $P < 0.01$), as well as for *Plasmodium* ($F_{1,23} = 2.25$; P



Cluster (no. of lineages)	No. of infections	Species	Families
1 (15)	42	13	9
2 (1)	45	7	4
3 (7)	60	14	9
4 (2)	203	14	10

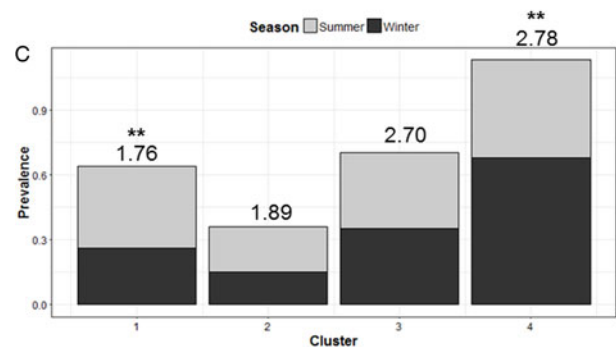


Fig. 3. Cluster analysis showing the grouping of lineages according to dominant mechanisms of infection (A). Lineages separated into four clusters using the weighted components of STD* index and host species infected (PC1 and PC2) as factors. (B) Lists cluster infection statistics by cluster; and (C) shows cluster seasonal variation in prevalence (mean STD* is shown above each bar and significant seasonal variation ($P < 0.01$) is marked as **).

Table 1. Variation (r^2) in parasite prevalence (genus/lineage) with abundance and diversity of host species/families ($N = 799$; species = 10; families = 7)

Infection	Prevalence level	Season	Host abundance		Host diversity	
			Species	Family	Species	Family
<i>Plasmodium</i>	Lineage	Summer	0.11	0.005	0.06	0.03
	Genus		0.19	0.05	0.18	0.13
	Lineage	Winter	0.12	0.15	0.23	0.19
	Genus		0.21	0.31	0.35	0.36
PLOVEL01	Lineage	Summer	-0.21	-0.19	-0.22	-0.16
		Winter	0.03	0.13	0.14	0.12
<i>Haemoproteus</i>	Lineage	Summer	0.22	0.16	0.23	0.26
	Genus		-0.25	0.10	-0.06	0.25
<i>Leucocytozoon</i>	Lineage	Summer	0.18	0.24	0.20	0.32
	Genus		0.40*	0.19	0.38*	0.23
	Lineage	Winter	0.34	0.19	0.33	0.32
	Genus		4.31 ⁻⁰⁴	-0.07		-0.03
RECOB3	Lineage	Summer	0.28	0.20	0.29	0.25
		Winter	0.61	0.59*	0.54	0.59*

Also included are outcomes after exclusion of dominant lineages for *Plasmodium* (PLOVEL01) and *Leucocytozoon* (RECOB3). Significance is denoted with bold text using Bonferroni adjusted P values ($*P < 0.05$).

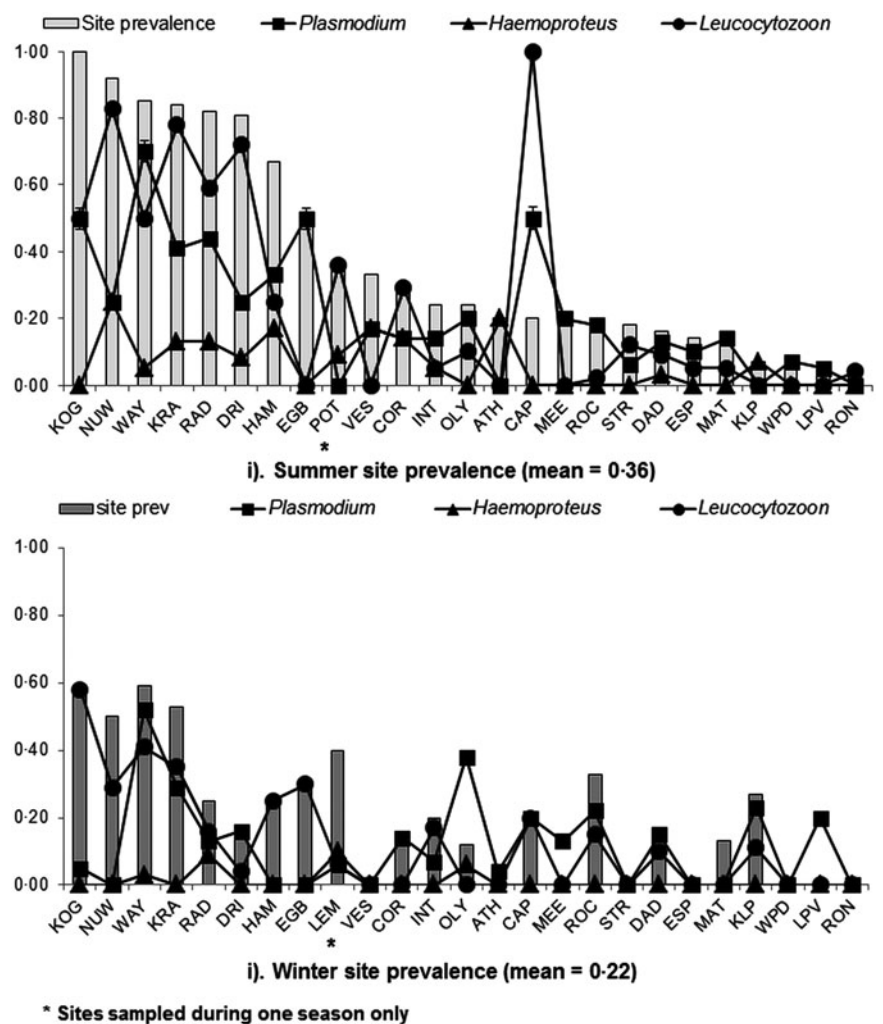


Fig. 4. Site prevalence across seasons; seasonal variation in prevalence was significant for site ($F_{1,46} = 5.78$; $P = 0.02$); *Plasmodium* ($F_{1,23} = 7.97$; $P < 0.01$); *Haemoproteus* ($F_{1,23} = 10.79$; $P < 0.01$) and *Leucocytozoon* ($F_{1,23} = 4.69$; $P = 0.04$).

= 0.03) and *Leucocytozoon* ($F_{1,23} = 2.52$; $P = 0.02$). Site count and season were key factors for *Plasmodium* lineages and *Haemoproteus* genus infections, respectively (Table 2). In contrast, *Leucocytozoon* genus infection prevalence remained largely unaffected by location or season, although site count was a key factor for lineage site infections (Table 2).

Discussion

Parasites within the *Leucocytozoon* spp. were the most prevalent in this study, followed by *Plasmodium* and *Haemoproteus*, respectively. *Plasmodium* spp. and *Leucocytozoon* spp. infected comparable numbers of birds and species, with lineages from both genera, also comprising the majority of co-infections. Dominant lineages within both the *Plasmodium* and *Leucocytozoon* genera were responsible for the majority of infections; *Leucocytozoon* also ranked as the most generalist genus, whereas *Plasmodium* appeared to be the most conservative (Fig. 2). However, this was clearly influenced by the majority of hosts infected with *Plasmodium* (Ploceidae birds) being closely related, and also the most abundantly sampled host group (Supplementary Figs II and III). When Ploceidae birds were excluded, *Plasmodium* host choice increased significantly (Fig. 2), and was in accordance with other reported patterns of *Plasmodium* infections (Waldenström *et al.* 2002; Beadell and Fleischer, 2005). Although excluding Ploceidae birds also affected the host specificity of *Leucocytozoon* infections (Fig. 2), genus infections remained moderately generalist, suggesting that generalism (host neutrality) is a prevailing trait within the *Leucocytozoon* genus. Other generalist traits observed in *Leucocytozoon* lineages were expressed as opportunistic infections, chiefly in the form of co-infections and spot infections. Opportunism has also been noted in *Leucocytozoon* infections from other studies, where the large number of co-infections led to the postulation that *Leucocytozoon* is competitively weaker than other genera of avian haemosporidia (van Rooyen *et al.* 2013). In contrast, host choice within the *Haemoproteus* genus was minimally affected by the exclusion of Ploceidae birds, highlighting that this genus is adapted to distinct host species and family groups (Okanga *et al.* 2014; Olsson-Pons *et al.* 2015).

Host susceptibility, host specificity, host abundance and season were key links and drivers of infection amongst parasite clusters (Fig. 3). Lineages in Clusters one and three occurred prevalently in co-infections; infections in these clusters appeared to be driven by seasonal factors and host susceptibility, respectively. Although Cluster one infected a taxonomically constrained host group, both clusters were less distinctive in terms of mechanisms of infection. This may be because lineages in these clusters are more recent arrivals in the region and less competitive (Humphery-Smith, 1989). In contrast, Cluster four displayed distinct traits of host neutrality, as both lineages infected a large and diverse host group; were dominant within their respective genus groups, and also appear to be prevalent in the African region (Cornuault *et al.* 2012; Ishtiaq *et al.* 2012; Illera *et al.* 2015). Cluster four lineages appear greatly influenced by host abundance and availability, and possibly subject to underlying mechanisms comparable with those described in abundance–occupancy relationships (Drovetski *et al.* 2014). Cluster two was unique in that it contained only one lineage, infected mostly one host family, yet also appeared susceptible to site species diversity. However, with only one lineage, it was difficult to ascertain the driving factors of infection for this cluster.

Host abundance was more influential on lineage prevalence than genus prevalence, particularly for *Leucocytozoon* spp. (Table 1). This pattern was apparent for both host species and family infections, and also distinctly seasonal for host family infections. Significant variation in *Leucocytozoon* infection

patterns with and without the inclusion of the dominant lineage (RECOB3), suggests that this lineage was more dependent on host abundance than other lineages. Although host abundance is known to significantly affect *Plasmodium* spp. prevalence (Ellis *et al.* 2016), this study may be among the first reports of a similar effect on *Leucocytozoon* generally and also for individual lineages within this genus. In addition to generalist and opportunistic traits, a high susceptibility to host abundance is potentially indicative of a less established or less competitive presence in the region for *Leucocytozoon* lineages (Marzal *et al.* 2008; Palinauskas *et al.* 2011). In contrast, the conservative host choice displayed by dominant *Plasmodium* lineages indicates that these lineages may have a more established regional presence. Host abundance has been known to significantly affect *Plasmodium* spp. prevalence (Ellis *et al.* 2016), but this study may be among the first reports of a similar effect for *Leucocytozoon* spp., although the effect was less prominent. The minimal effect of host abundance on *Haemoproteus* infections was in concurrence with other studies, which note that *Haemoproteus* infections are more driven by host choice (Clark and Clegg, 2017), and subsequently more susceptible to host ecology factors such as roosting and foraging behaviour (Lutz *et al.* 2015; Hellard *et al.* 2016). Similarly, the strong influence of season on *Haemoproteus* prevalence is consistent with the seasonal nature of several aspects of host behaviour and ecology, with many activities taking place during summer months (Hockey *et al.* 2005).

Host diversity was notably influential only on *Leucocytozoon* infections within host families and was also affected by season (Table 1). *Leucocytozoon* infections were also the only type occurring in non-passerine species; this finding, paired with generalist tendencies reported here and elsewhere (Bennett *et al.* 1992; Zagalsk-Neubauer and Bensch, 2016), further demonstrate the plasticity in host choice displayed by *Leucocytozoon* lineages, suggesting that opportunism is a principal *modus operandi* for the *Leucocytozoon* genus.

The season was a central influence on patterns of infection for parasites within all three genera. The season was especially influential to *Haemoproteus* prevalence in both host species and host families, and influential overall to site and genus site prevalence (Fig. 4). The seasonal influence was also apparent in models describing *Haemoproteus* genus infections (Table 2), suggesting that vector ecology exerted an indirect influence on *Haemoproteus* prevalence. Like many arthropod vectors, avian haemosporidian vectors are highly susceptible to environmental conditions for breeding success and survival, and often have specific habitat requirements influencing infection risk (Smith *et al.* 2004; Ezugbo-Nwobi and Eneanya, 2013). A further consideration is that host movement and local geography may influence parasite prevalence (Calder *et al.* 2015), as these factors may affect vector availability in various regions of foraging or nesting. For example, with *Leucocytozoon* infections, many affected avian hosts have habitat preferences at high elevations (Votýpka *et al.* 2002; Imura *et al.* 2012; van Rooyen *et al.* 2013; Zagalska-Neubauer and Bensch, 2016), and there is similar evidence that *Leucocytozoon* vectors (Simuliidae) also prefer higher altitudes (Černý *et al.* 2011).

Typically, avian haemosporidia are grouped according to the genus they belong to, or by the taxonomic diversity of host infected (host specificity). In this study, we found that haemosporidia can form distinct clusters that are linked by a common, dominant mechanism of infection. The parasite clusters formed were heterogeneous with respect to parasite genus and host taxonomic diversity. Several of the tested hypotheses offered good explanations for infection trends, albeit at different levels of analysis. At the host species level, the host-neutral hypothesis (H1) was apparent in the form of opportunism (a prominent trait in

Table 2. Generalized linear models for factors describing parasite genus and lineage prevalence by site

Variable	GCE (\pm s.e.)	AIC	LCE (\pm s.e.)	AIC
<i>Plasmodium</i>		188.00		152.34
Intercept	9.07 \pm 6.61		2.69 \pm 5.07	
Location	0.73 \pm 0.42		0.22 \pm 0.32	
Season	-0.24 \pm 0.26		0.20 \pm 0.17	
Site count	-3.73 ⁻⁰⁴ + 2.57 ⁻⁰³		-3.78⁻⁰⁴ \pm 1.68^{-03*}	
Site diversity	0.33 \pm 0.69		-0.63 \pm 0.60	
<i>Haemoproteus</i>		97.30		91.91
Intercept	18.26 \pm 13.95		2.93 \pm 11.71	
Location	1.45 \pm 0.88		0.37 \pm 0.75	
Season	-1.21 \pm 0.59*		-0.68 \pm 0.47	
Site count	-8.32 ⁻⁰³ \pm 6.11 ⁻⁰³		-3.31 \pm 4.38 ⁻⁰³	
Site diversity	1.06 \pm 1.54		0.50 \pm 1.40	
<i>Leucocytozoon</i>		200.81		144.16
Intercept	0.33 \pm 9.98		-3.62 \pm 4.65	
Location	0.20 \pm 0.64		-0.18 \pm 0.30	
Season	-0.30 \pm 0.40		-0.07 \pm 0.16	
Site count	-5.60 ⁻⁰³ \pm 3.92 ⁻⁰³		-3.04 ⁻⁰³ \pm 1.78 ⁻⁰³	
Site diversity	1.55 \pm 1.01		0.42 \pm 0.53	

AIC, Akaike's Information Criterion, used to select the best fit model; GCE, genus model coefficient; LCE, lineage model coefficient; s.e., standard error. AIC values for the null model are given; predictors causing significant deviance when omitted (χ^2) are in bold (* $P \leq 0.05$).

Leucocytozoon lineages), whereas heterogeneity (H4) exerted a stronger influence at the parasite genus level of infection. Host-neutrality was also influential to the success of dominant lineages in the *Plasmodium* and *Leucocytozoon* genera. In contrast, host specialization was most manifest at the parasite genus level, with significant variation occurring in host specificity. Additionally, it was apparent that variation in the taxonomic levels of host or parasite can potentially create divergent patterns of infection by either amplifying or suppressing the strength of the infection mechanisms in operation. Environmental factors exerted a connecting influence rather than an independent effect [unlike the mechanism proposed in hypothesis (H4)]. Season was a central influence on factors such as parasite and host abundance, host diversity and site (or vectorial) factors. There was some evidence for the spread of infection *via* super-spreaders (H2) – seen in the influence of weaver birds (potential super-spreaders) on host specificity within parasite genera. However, this appeared to be a less prominent mechanism in relation to the others. Our findings highlight the benefits of examining infection across multiple communities and scales of both host and parasite (Rigaud *et al.* 2010). Studies of host and avian haemosporidian communities are relatively limited in number; however, our findings advocate for wider scale communal studies of avian haemosporidia, as they potentially provide key insights as to repetitive, as well as emerging trends of infection.

Supplementary material. The supplementary material for this article can be found at <https://doi.org/10.1017/S0031182018000665>.

Acknowledgements. We are grateful to David Nkosi, Gregory Mutumi, Mduduzi Ndlovu, Dieter Oschadleus and Doug Harebottle for assistance with fieldwork, and to Staffan Bensch for maintaining the MalAvi database as a resource.

Financial support. This research was funded by the National Research Foundation of South Africa and the DST/NRF Centre of Excellence at the Percy FitzPatrick Institute.

Declaration of interest. None.

Ethical standards. This research was carried out in strict accordance with recommendations provided by the UCT Science Faculty Animal Ethics Committee (University of Cape Town). The research was conducted after approval from the UCT Science Faculty Animal Ethics Committee and did not involve the sampling of endangered or protected species. Approval for this research and access to field sites was granted by private landowners in the Western Cape and the City of Cape Town. Research permits granting access to protected areas were issued by SANParks (South African National Parks Board) and by Cape Nature (the Western Cape Nature Conservation Board).

References

- Altizer S, *et al.* (2006) Seasonality and the dynamics of infectious diseases. *Ecology Letters* **9**, 467–484.
- Beadell JS and Fleischer RC (2005) A restriction enzyme-based assay to distinguish between avian hemosporidians. *Journal of Parasitology* **91**, 683–685.
- Bell AS, *et al.* (2006) Within-host competition in genetically diverse malaria infections: parasite virulence and competitive success. *Evolution* **60**, 1358–1371.
- Bennett GF, Earlé RA and Du Toit H (1992) A host-parasite catalogue of the haematozoa of the sub-Saharan birds. *Onderstepoort Journal of Veterinary Research* **59**, 1–73.
- Bensch S, *et al.* (2000) Host specificity in avian blood parasites: a study of *Plasmodium* and *Haemoproteus* mitochondrial DNA amplified from birds. *Proceedings of the Royal Society of Biological Sciences Series B* **267**, 1583–1589.
- Bensch S, Hellgren O and Pérez-Tris J (2009) Malawi: a public database of malaria parasites and related haemosporidians in avian hosts based on mitochondrial cytochrome b lineages. *Molecular Ecology Resources* **9**, 1353–1358.
- Calder JL, *et al.* (2015) Urban land use does not limit weaver bird movements between wetlands in Cape Town, South Africa. *Biological Conservation* **187**, 230–239.
- Černý O, Votýpka J and Svobodová M (2011) Spatial feeding preferences of ornithophilic mosquitoes, blackflies and biting midges. *Medical and Veterinary Entomology* **25**, 104–108.

- Clark NJ and Clegg SM (2017) Integrating phylogenetic and ecological distances reveals new insights into parasite host specificity. *Molecular Ecology* **26**, 3074–3086.
- Cornuault J, et al. (2012) The role of immigration and in-situ radiation in explaining blood parasite assemblages in an island bird clade. *Molecular Ecology* **21**, 1438–1452.
- Cumming GS, et al. (2013) Host associations, biogeography, and phylogenetics of avian malaria in Southern African waterfowl. *Parasitology* **140**, 193–201.
- Drovetski S, et al. (2014) Does the niche breadth or trade-off hypothesis explain the abundance occupancy relationship in avian haemosporidia? *Molecular Ecology* **23**, 3322–3329.
- Dunn OJ (1961) Multiple comparisons among means. *Journal of the American Statistical Association* **56**, 52–64.
- Ellis VA, et al. (2017) Prevalence of avian haemosporidian parasites is positively related to the abundance of host species at multiple sites within a region. *Parasitology Research* **116**, 73–80.
- Ezugbo-Nwobi IK and Eneanya CI (2013) Ecology and biting activity of simulium damnosum complex in Nigeria: a review. *The BioScientist* **1**, 39–46.
- Galen SC and Witt CC (2014) Diverse avian malaria and other haemosporidian parasites in Andean house wrens: evidence for regional co-diversification by host-switching. *Journal of Avian Biology* **45**, 374–386.
- Gaston EBKJ (1996) *Biodiversity: A Biology of Numbers and Difference*, London, UK: Blackwell Science.
- Gelman A and Hill J (2007) *Data Analysis Using Regression and Multilevel/Hierarchical Models*, 1st edn. New York: Cambridge University Press.
- Haig SM, Mehlman DW and Oring LW (1998) Avian movements and wetland connectivity in landscape conservation. *Conservation Biology* **12**, 749–758.
- Hellard E, et al. (2016) Testing epidemiological functional groups as predictors of avian haemosporidia patterns in Southern Africa. *Ecosphere (Washington, DC)* **7**, 1–17. doi: 10.1002/ecs2.1225.
- Hellgren O, Waldenström J and Bensch S (2004) A new PCR assay for simultaneous studies of Leucocytozoon, Plasmodium, and Haemoproteus from avian blood. *Journal of Parasitology* **90**, 797–802.
- Hellgren O, Pérez-Tris J and Bensch S (2009) A jack-of-all-trades and still a master of some: prevalence and host range in avian malaria and related blood parasites. *Ecology* **90**, 2840–2849.
- Hellgren O, et al. (2013) Identification and characterization of the merozoite surface protein 1 (msp1) gene in a host-generalist avian malaria parasite, *Plasmodium relictum* (lineages SGS1 and GRW4) with the use of blood transcriptome. *Malaria Journal* **12**, 381.
- Hockey PAR, Dean WRJ and Ryan PG (2005) *Roberts – Birds of Southern Africa*, 7th edn. Cape Town: The Trustees of the John Voelcker Bird Book Fund.
- Horikoshi M and Tang Y (2016) *Ggfortify: Data Visualization Tools for Statistical Analysis Results*. Available at <https://CRAN.R-project.org/package=ggfortify>.
- Humphery-Smith I (1989) The evolution of phylogenetic specificity among parasitic organisms. *Parasitology Today* **5**, 385–387.
- Illera JC, et al. (2015) Unforeseen biogeographical patterns in a multiple parasite system in Macaronesia. *Journal of Biogeography* **42**, 1858–1870.
- Imura T, et al. (2012) Diversity and distribution of avian haematzoan parasites in the western Indian Ocean region: a molecular survey. *Parasitology* **139**, 221–231.
- Ishtiaq F, Beadell JS, Warren BH and Fleischer RC (2012) Diversity and distribution of avian haematzoan parasites in the western Indian Ocean region: a molecular survey. *Parasitology* **139**, 221–231.
- Kassambara A (2016) Package ‘factoextra’. Available at <https://cran.r-project.org/package=factoextra>.
- Keesing F, et al. (2010) Impacts of biodiversity on the emergence and transmission of infectious diseases. *Nature* **468**, 647–652.
- Levin S (1992) The problem of pattern and scale in ecology: the Robert H. MacArthur award lecture. *Ecology* **73**, 1943–1967.
- Ludwig D, Jones DD and Holling CS (1978) Qualitative analysis of insect outbreak systems: the spruce budworm and forest. *The Journal of Animal Ecology* **47**, 315–332.
- Lutz HL, et al. (2015) Parasite prevalence corresponds to host life history in a diverse assemblage of afro-tropical birds and haemosporidian parasites. *PLoS ONE* **10**, e0121254.
- MacQueen J (1967) Some methods for classification and analysis of multivariate observations. *Proceedings of the fifth Berkeley symposium on mathematical statistics and probability* **1**, 281–297.
- Maechler M, et al. (2016) *Cluster: Cluster Analysis Basics and Extensions*. R package version 2.0.5.
- Marzal A, et al. (2008) Effects of malaria double infection in birds: one plus one is not two. *Journal of Evolutionary Biology* **21**, 979–987.
- Okanga S, Cumming GS and Hockey PA (2013a) Avian malaria prevalence and mosquito abundance in the Western Cape, South Africa. *Malaria Journal* **12**, 370.
- Okanga S, et al. (2013b) Landscape structure influences avian malaria ecology in the Western Cape, South Africa. *Landscape Ecology* **28**, 2019–2028.
- Okanga S, et al. (2014) Host specificity and co-speciation in avian haemosporidia in the Western Cape, South Africa. *PLoS ONE* **9**, e86382.
- Oksanen J, et al. (2015) *Vegan: Community Ecology Package*. R package version 2.4-1. Available at <http://CRAN.R-project.org/package=vegan>.
- Olsson-Pons S, et al. (2015) Differences in host species relationships and biogeographic influences produce contrasting patterns of prevalence, community composition and genetic structure in two genera of malaria parasites in southern Melanesia. *Journal of Animal Ecology* **84**, 985–998.
- Palinauskas V, et al. (2011) *Plasmodium relictum* (lineage SGS1) and *Plasmodium ashfordi* (lineage GRW2): the effects of the co-infection on experimentally infected passerine birds. *Experimental Parasitology* **127**, 527–533.
- Paracuellos M and Telléria JL (2004) Factors affecting the distribution of a waterbird community: the role of habitat configuration and bird abundance. *Waterbirds* **27**, 446–453.
- Poulin R and Mouillot D (2005) Combining phylogenetic and ecological information into a new index of host specificity. *Journal of Parasitology* **91**, 511–514.
- R Core Development Team (2017) R: A language and environment for statistical computing. <https://www.R-project.org/>
- Read AF and Taylor LH (2001) The ecology of genetically diverse infections. *Science* **292**, 1099–1102.
- Ricklefs RE (1992) Embryonic development period and the prevalence of avian malaria parasites. *Proceedings of the National Academy of Sciences of the USA* **89**, 4722–4725.
- Ricklefs RE, Fallon SM and Bermingham E (2004) Evolutionary relationships, cospeciation, and host switching in avian malaria parasites. *Systematic Biology* **53**, 111–119.
- Rigaud T, Perrot-Minnot M-J and Brown MFJ (2010) Parasite and host assemblages: embracing the reality will improve our knowledge of parasite transmission and virulence. *Proceedings of the Royal Society of Biological Sciences* **277**, 3693–3702.
- Schultz A, et al. (2011) Seasonality, distribution and taxonomic status of avian haemosporidian parasites within the Greater Cape Town area, South Africa. *Ostrich* **82**, 141–153.
- Shannon CE (1948) A mathematical theory of communication. *Bell System Technical Journal* **27**, 379–423.
- Smith DL, Dushoff J and McKenzie FE (2004) The risk of a mosquito-borne infection in a heterogeneous environment. *PLoS Biology* **2**, e368.
- Stephens M, Smith NJ and Donnelly P (2001) A new statistical method for haplotype reconstruction from population data. *American Journal of Human Genetics* **68**, 978–989.
- Szymanski MM and Lovette IJ (2005) High lineage diversity and host sharing of malarial parasites in a local avian assemblage. *Journal of Parasitology* **91**, 768–774.
- Tompkins DM, et al. (2011) Wildlife diseases from individuals to ecosystems. *Journal of Animal Ecology* **80**, 19–38.
- Valkiūnas G (2005) *Avian Malaria Parasites and Other Haemosporidia*. Boca Raton: CRC Press.
- Van Rooyen J, et al. (2013) Avian haemosporidian persistence and co-infection in great tit at the individual level. *Malaria Journal* **12**, 40.
- Votýpka J, et al. (2002) *Trypanosoma avium* of raptors (Falconiformes): phylogeny and identification of vectors. *Parasitology* **125**, 253–263.
- Waldenström J, et al. (2002) Cross-species infection of blood parasites between resident and migratory songbirds in Africa. *Molecular Ecology* **11**, 1545–1554.
- Zagalaska-Neubauer M and Bensch S (2016) High prevalence of *Leucocytozoon* parasites in fresh water breeding gulls. *Journal of Ornithology* **157**, 525–532.
- Zhang Z, et al. (2000) A greedy algorithm for aligning DNA sequences. *Journal of Computer Biology* **7**, 203–214.