

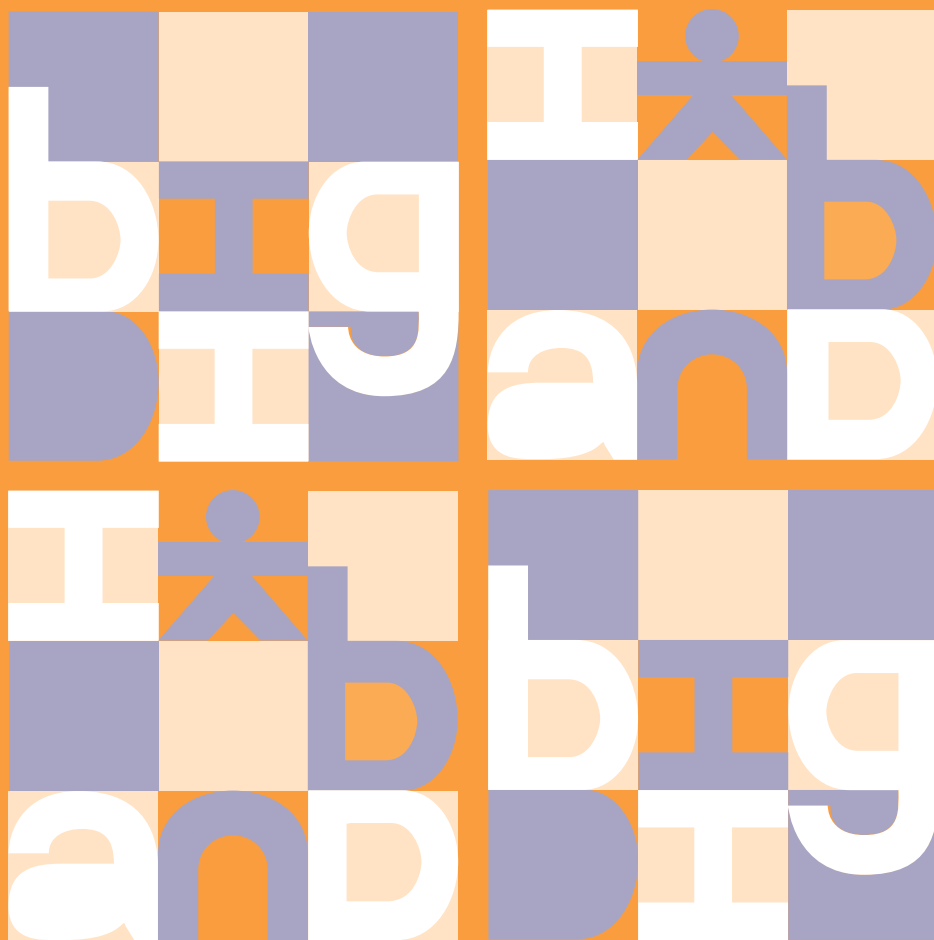
Journal of Child Language

ISSN 0305-0009

Volume 38

NUMBER 2

MARCH 2011



CAMBRIDGE
UNIVERSITY PRESS

Journal of **Child Language**

The Journal of the International Association for the Study of Child Language

Editors Edith L. Bavin *La Trobe University*

Heike Behrens *University of Basel*

Associate Editors Shanley Allen *University of Kaiserslautern*
Misha Becker *North Carolina*
Erika Hoff *Florida Atlantic University*
Margaret Kehoe-Winkler *Hamburg*

Letitia Naigles *University of Connecticut*
Stephanie Stokes *University of Canterbury, New Zealand*

Editorial Assistant Miles Lambert

Founding Editor David Crystal *(Bangor)*

Editorial Board

R. Berman *(Tel Aviv)*
D. Bishop *(Oxford)*
M. Bowerman *(Nijmegen)*
H. Clahsen *(Essex)*
E. Clark *(Stanford)*
S. Crain *(Macquarie)*
P. Dale *(New Mexico)*
K. Demuth *(Macquarie)*
P. Fletcher *(Cork)*
R. Golinkoff *(Delaware)*
H. Jisa *(Lyon)*
E. Lieven *(Leipzig)*
B. MacWhinney *(Carnegie Mellon)*

V. Mueller Gathercole *(Bangor)*
Y. Oshima-Takane *(McGill)*
A. Peters *(Hawai'i)*
A. Radford *(Essex)*
D. Slobin *(Berkeley)*
M. Tomasello *(Leipzig)*
J. Werker *(British Columbia)*
M. Vihman *(York)*
L. Serratrice *(Manchester)*
(The Secretary of the
International Association
for the Study of Child
Language)

Editorial Policy

The journal publishes material on all aspects of the scientific study of language in children, the principles which underlie it, and the theories which may account for it. Articles can report findings from naturalistic observations or experiments; and the subject-matter may include phonology, phonetics, morphology, syntax, vocabulary, semantics, pragmatics, sociolinguistics, or any other recognized facet of language study. Articles may concern the acquisition of one language, or they may have a crosslinguistic focus; they may relate to the study of individuals or of groups of children. Articles should make a theoretical, conceptual and/or methodological advance in our understanding of language development in children.

Abstracting

The journal is covered by relevant abstracting and indexing services including:

Abstracts in Anthropology, Association for Education and Rehabilitation of the Blind and Visually Handicapped Yearbook, Applied Social Sciences Index & Abstracts, Bibliography of Developmental Medicine & Child Neurology, British Education Abstracts, Chicorel Abstracts to Reading and Learning Disabilities, Child Development Abstracts, Communication Abstracts, Current Contents, Current Index to Journals in Education, Education Index, Education Resources Information Center (ERIC), Language Teaching, Linguistic Abstracts, Linguistic Bibliography, Linguistics and Language Behavior Abstracts, Psychological Abstracts, Sage Family Studies Abstracts, Social Science Citation Index, Sociological Abstracts.