

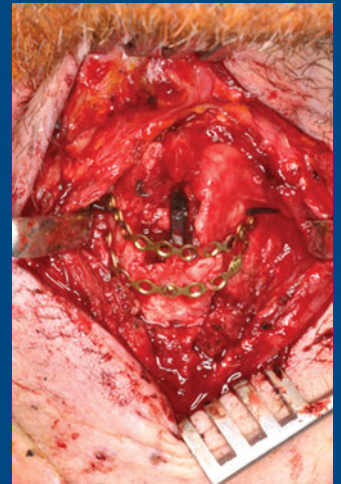
ISSN 0022-2151

February  
2009

The Journal of

# Laryngology & Otology

Founded in 1887  
by Morell Mackenzie & Norris Wolfenden



features:

The processus cochleariformis as a landmark in middle cranial fossa surgery

Long term complications of BAHA

MRSA in patients undergoing rhinological surgery

The quality of life before and after tonsillectomy

Honey as a topical prophylactic in radiochemotherapy-induced mucositis

Biological therapy of salivary duct carcinoma

Vol

123

No 2

**Courses on Middle Ear and Lateral Skull  
Base Surgery**  
Course Director: Mario Sanna, MD

This cadaver hands-on workshop provides the individual opportunity for:

- Live surgery every morning
- Video presentation of techniques and clinical cases
- Didactic presentations
- Performing the surgical procedures on specially prepared bones and half heads
- Discussions

**21st - 25th September 2009 (Middle ear Surgery)**  
**23rd - 27th November 2009 (Skull Base Surgery)**

For additional information contact:  
Secretary Gruppo Otologico  
Via Morigi, 41 - 29100 Piacenza - Italy  
Tel: + 39 0523 754362  
Fax: + 39 0523 453708  
Email: [corsi.sanna@gruppootologico.it](mailto:corsi.sanna@gruppootologico.it)

UCL EAR INSTITUTE  
GRAYS INN ROAD COURSES



**UCL**

**An Endoscopic Approach  
to Rhinosinusitis**  
**7-10 October  
2009**

**Course Faculty:**

V J Lund, D Roberts, J Rowe-Jones,  
L Badia, S Durham, T Beale

**Guest Lecturer:** Professor Heinz Stammberger

The course covers all aspects of rhinosinusitis, advanced approaches to the frontal sinus including balloon sinuplasty, extended endoscopic surgery of the skull base and orbit and the use of computer assisted surgery from a very experienced faculty using:

- Hands-on anatomy dissection with powered instrumentation
- Anatomical demonstrations
- Live operating
- Lectures & discussion

At The Royal National Throat,  
Nose & Ear Hospital  
(Royal Free Hampstead NHS Trust)  
and the UCL Ear Institute

**Registration:**

£799\*\* - including dissection\*

£459\*\* - without dissection

(\* limited spaces available for dissection)

(\*\* 2009 prices TBC)

**Applications with Deposit to:**

Charmaine Henry or Ricky Kemp, Administration  
UCL Ear Institute, 332 - 336 Grays Inn Road, London, WC1X 8EE.  
Tel: +44 (0) 20 7679 8909/8 Fax: +44 (0) 20 7637 9279  
e-mail: [c.henry@ucl.ac.uk](mailto:c.henry@ucl.ac.uk) or [ricky.kemp@ucl.ac.uk](mailto:ricky.kemp@ucl.ac.uk)

Institute manager: Cheryl Overington

**CAMBRIDGE**

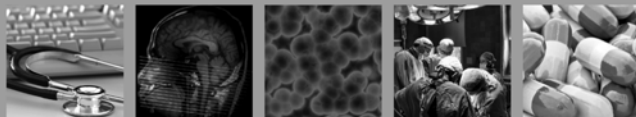
**JOURNALS**

## Bulk Article Reprints

Reprints of articles published in this journal can be purchased for use by your company or organisation. These reprints can be produced as straight article reprints or with custom designed covers and, if required, the sponsor's name printed on or inside the cover. Reprints represent a versatile sales tool for the distribution of up-to-date information on your particular areas – via your sales force, direct mail campaigns and as handouts at major conferences and commercial exhibitions. Reprints can usually be delivered to clients 2–4 weeks after the receipt of the order.

**Rebecca Curtis, Special Sales Manager**

Cambridge University Press, The Edinburgh Building,  
Shaftesbury Road, Cambridge, UK, CB2 8RU  
Tel: +44 (0)1223 325757, Email: [special\\_sales@cambridge.org](mailto:special_sales@cambridge.org)



**CAMBRIDGE  
UNIVERSITY PRESS**

The Journal of  
**Laryngology & Otology**

Founded in 1887 by Morell Mackenzie and Norris Wolfenden

**Editors**

Guy Kenyon (London)  
Robin Youngs (Gloucester)

**Emeritus Editor**

Neil Weir (Guildford)

**Book Review and Senior Assistant Editor**

Liam Flood (Middlesbrough)

**Assistant Editors**

Martin Bailey (London)  
Jon Bennett (London)  
Abir Bhattacharyya (London)  
Brian Bingham (Glasgow)  
Patrick Bradley (Nottingham)  
Alfio Ferlito (Udine)  
Edward Fisher (Birmingham)  
S S Musheer Hussain (Dundee)  
Richard Irving (Birmingham)  
Andrew Jones (Liverpool)  
Nick Jones (Nottingham)  
Bhik Kotecha (London)  
Valerie Lund (London)  
Robert Mills (Edinburgh)  
Desmond Nunez (Bristol)  
Andrew Prichard (Shrewsbury)  
David Proops (Birmingham)

Alessandra Rinaldo (Udine)  
Peter Robb (Epsom)  
Mark Samaha (Quebec)  
Nick Stafford (Hull)  
Iain Swan (Glasgow)  
John Watkinson (Birmingham)  
Richard Wight (Middlesbrough)  
Tim Woolford (Manchester)  
Matthew Yung (Ipswich)

**Advisers in Audiology**

Doris-Eva Bamiou (London)  
Linda Luxon (London)

**Advisers in Pathology**

Simon Rose (Bath)  
Ketan Shah (Oxford)  
Lesley Ann Smallman (Gloucester)  
Adrian Warfield (Birmingham)

**Adviser in Radiology**

Tim Beale (London)

**Adviser in Statistics**

Linda Hunt (Bristol)

**Website Editor**

Nitesh Patel (London)

**Managing Editor**

Rosamund Greensted

---

Editorial Office: Maybank, Quickley Rise, Chorleywood, Herts WD3 5PE, UK.  
Tel/fax: +44 (0)1923 283561. Email: j.l.o@btconnect.com. Website: <http://www.jlo.co.uk>

*The Journal of Laryngology & Otology* (ISSN 0022-2151) is published monthly in both print and electronic form and distributed on behalf of the proprietors, JLO (1984) Ltd, by Cambridge University Press  
Registered Charity No 293063

---

## SUBSCRIPTIONS, LICENSING, ADVERTISING AND REPRINTS

*The Journal of Laryngology & Otology* (ISSN 0022-2151) is published monthly in both print and electronic form and distributed on behalf of the proprietors, JLO (1984) Ltd, by Cambridge University Press.

### Subscriptions: Volume 123, 2009 (Monthly)

Both Standard and Online-only subscription prices entitle subscribers to access all of the archival online content, which dates back to Volume 114 (2000). For further details please go to Cambridge University Press.

Institutions print and electronic: £358/\$716. Institutions electronic only: £320/\$640. Individuals print plus electronic: £190/\$380. Member rates available – please enquire. Special rates available for Trainees. Print ISSN 0022-2151. Electronic ISSN 1748-5460

Orders are regarded as firm, and payments are not refundable. All orders and enquiries, including online licensing and consortia enquiries, should be sent to: Journals Subscription Department, Cambridge University Press.

\*Periodicals postage paid at Rahway, NJ. US Postmaster: send address changes to *The Journal of Laryngology & Otology*, c/o Mercury Airfreight International Ltd, 365 Blair Road, Avenel, NJ 07001, USA.

### Advertising sales

Contact: Rebecca Curtis, Journals, Cambridge University Press.

Tel: +44 (0)1223 325757

Fax: +44 (0)1223 325801

E-mail: ad\_sales@cambridge.org

### Other business correspondence

All other business correspondence, should be sent to: Daniel Edwards dedwards@cambridge.org Journals Department, Cambridge University Press. Enquiries about reprints should be sent to Rebecca Curtis: special\_sales@cambridge.org

### © 2009 JLO (1984) Limited

Apart from any fair dealing for the purposes of research or private study, or criticism or review, as permitted under the UK Copyright, Designs and Patents Act, 1988, no part of this publication may be reproduced, stored, or transmitted, in any form or by any means, without the prior permission in writing of the Editors, or in the case of reprographic reproduction in accordance with the terms of licences issued by the Copyright Licensing Agency in the UK, or in accordance with the terms of licences issued by the appropriate Reproduction Rights Organization outside the UK. Enquiries concerning reproduction outside the terms stated here should be sent to the publishers at the above address. Contributors and advertisers are responsible for the scientific content and the views expressed, which are not necessarily those of the Editors or of Cambridge University Press.

Typeset by Techset and printed in Great Britain by Latimer Trends

## SUMMARY GUIDANCE FOR AUTHORS

*The Journal of Laryngology & Otology (JLO)* is a peer-reviewed publication, and is indexed/abstracted in most major databases including Index Medicus, MEDLINE/PubMed, Science Citation Index, Current Contents and EMBASE.

Only a very brief summary of the submission requirements is presented here: when preparing their manuscripts, authors must consult and comply with the full Instructions for Authors on the *JLO* website at <http://www.jlo.co.uk/docs/submittingarticles.htm>

Adherence to these will speed up the editorial process.

All contributions are considered for publication on the understanding that they have been submitted solely to the *JLO* and that they have not previously been published. Contributions in the following categories will be considered: Main Articles (reporting clinical research or audit), Review Articles, Historical Articles, Short Communications (including 'How I do it'), Clinical Records (case reports), Radiology/Pathology/Oncology in Focus, and Letters to the Editors.

### Submission

All contributions must be accompanied by a covering letter, which must be signed by **all** authors. Manuscripts should be submitted to the Editors:

- either **online** via [www.jlo.co.uk](http://www.jlo.co.uk)
- or **by post** to the Editorial Office, *The Journal of Laryngology & Otology*, Maybank, Quickley Rise, Chorleywood, Hertfordshire WD3 5PE, UK (Tel/Fax: +44 (0)1923 283561; E-mail [j.l.o@btconnect.com](mailto:j.l.o@btconnect.com)). Three copies should be submitted, one on floppy disk or CD-ROM (including separate TIFF files of any figures) and two printed on paper (together with two sets of figures).

The text of the manuscript (incorporating all tables and the figures legends, but **not** the figures themselves) must be saved as a Microsoft Word document or an RTF file (i.e. 'rich text format'). Use double-spaced, unjustified text throughout. The title page must contain the full title of the paper; the names and qualifications of all authors; the departments(s) and institution(s) where the work was carried out; and the name, postal and e-mail address, and telephone and fax numbers of the author responsible for all communications about the manuscript and proofs. An Abstract (maximum 150 words) and Key words must be provided for all contributions (except Letters).

References should be identified in the text by superscript Arabic numerals and listed at the end of the manuscript in the order in which they are first cited in the text. The tables feature of the word processor should be used to prepare Tables, and both these and the list of Figure legends should appear on separate pages at the end of the manuscript. All Figures must be saved as separate TIFF files at a resolution of 600 dpi.

The authors of all material accepted for publication will be required to assign copyright to JLO (1984) Ltd; a form for this purpose and for ordering offprints will accompany the proofs. The proofs will be sent by e-mail to the corresponding author as a PDF file, and should be corrected and returned within three working days.