

## Original Article

†These authors contributed equally

**Cite this article:** Skeffington KL, Beck C, Itani N, Giussani DA. (2018) Isolating the direct effects of adverse developmental conditions on *in vivo* cardiovascular function at adulthood: the avian model. *Journal of Developmental Origins of Health and Disease* 9: 460–466. doi: 10.1017/S2040174418000247

Received: 19 December 2017

Revised: 20 February 2018

Accepted: 16 March 2018

First published online: 25 April 2018

### Key words:

avian surgery; cardiovascular disease; *in vivo* studies; programming

### Address for correspondence:

Prof. D. A. Giussani, Department of Physiology, Development & Neuroscience, University of Cambridge CB2 3EG, UK.  
E-mail: dag26@cam.ac.uk

# Isolating the direct effects of adverse developmental conditions on *in vivo* cardiovascular function at adulthood: the avian model

K. L. Skeffington<sup>†</sup>, C. Beck<sup>†</sup>, N. Itani and D. A. Giussani

Department of Physiology, Development & Neuroscience, University of Cambridge, Cambridge, UK

## Abstract

It is now well accepted that exposure to adverse environmental conditions *in utero* can predispose a fetus to disease later in life. Using an avian model to study the programming of disease has a unique advantage as it allows isolation of the direct effects of adverse conditions on fetal physiology, without any confounding effects via the mother or placenta. However, experiments in avian models are limited by the lack of well-established surgical protocols for the adult bird, which we have established in this study. Surgery was performed on seven young adult Bovan Brown chickens (body weight  $1617 \pm 214$  g, mean  $\pm$  s.d.) in order to instrument them with femoral arterial and venous catheters and a femoral arterial flow probe. Isoflurane and lidocaine were both found to have depressive effects on chicken cardiovascular function. Optimised methods of anaesthesia, intraoperative monitoring, surgical approach, postoperative care, and experimentation are described. Chickens recovered rapidly from surgery without significant blood gas perturbation, and basal *in vivo* cardiovascular studies were performed following 5 days of recovery. These techniques allow detailed investigation of avian cardiometabolic function, permitting determination of the consequences in later life of direct environmental insults to fetal physiology, isolated from additional effects on maternal physiology and/or placental endocrinology.

## Introduction

The theory of a Developmental Origin of Health and Disease states that exposure to adverse environmental conditions (e.g. undernutrition, obesity, hypoxia or stress) during development can programme an increased risk of disease in the offspring later in life.<sup>1–3</sup> The mechanisms by which this occurs can involve a direct influence of adverse conditions on fetal development or, alternatively, fetal development may also be affected secondary to changes in the maternal and/or placental physiology. Avian species are ideal for isolating the direct effects of adverse conditions on fetal development from any confounding effects via the mother or placenta, as the chicken embryo develops inside the egg completely independent of adverse maternal conditions.

There are several other advantages of using avian species. They have a comparatively short incubation period, meaning studies can be conducted quickly. Compared with rodents, the timing of key events in the development of their nervous and cardiovascular systems is closer to that of human development.<sup>4,5</sup> Furthermore, unlike polytocous mammals, there is no need to consider within-litter variation, the maternal investment in the pregnancy or effects of lactation. Hence, there is no need to deal with the complications of using surrogate pregnancies or cross-fostering experimental designs.<sup>6</sup> Drugs can also be easily given into the embryonic circulation by topical administration onto the chorioallantoic membrane.<sup>7–9</sup> Therefore, in addition to isolating the direct programming effects of adverse conditions on the developing individual, it is also possible to isolate the direct effects of potential interventional therapies against programming of disease in the offspring. Finally, there is an additional advantage from an ethical perspective, as there is no need to sacrifice a maternal life in order to study the fetus. Hence, the number of animals required is significantly reduced, thereby abiding strongly by the 3R principle, enshrined in the United Kingdom by the Home Office. However, despite these advantages, surgical techniques, which are invaluable to study *in vivo* cardiovascular and metabolic function in the adult individual, are not well described for birds. Therefore, the aim of this study was to establish a surgical protocol for *in vivo* cardiovascular investigation in the adult chicken.

## Methods

### Animals

All procedures were carried out in accordance with the UK Animals (Scientific Procedures) Act 1986 and were approved by the Local Ethics Review Committee of the University of

Cambridge. Surgery was performed on seven female Bovan Brown chickens (*Gallus gallus domesticus*), aged 6–7 months and weighing  $1617 \pm 214$  g (mean  $\pm$  s.d.). These chickens had just started to lay eggs and so are roughly equivalent to teenage or young adult humans.

### Pre-surgical preparation

The chickens were deprived of food but not water 3 h before surgery. Anaesthesia was induced by spontaneous inhalation of 2–2.5% isoflurane (IsoFlo; Abbott Laboratories Ltd, Berkshire, UK) in 4 l/min O<sub>2</sub> via a transparent facemask. Once induced, anaesthesia was maintained with 1.5–2% isoflurane and 4–5 LO<sub>2</sub>/min, administered via the facemask. Chickens were placed in a lateral recumbent position on a heat mat with the head elevated by 5–10 cm to prevent aspiration if any crop reflux occurred during anaesthesia. Throughout surgery, the chickens underwent careful monitoring of their arterial blood oxygen saturation and heart rate (Pulse Oximeter YM-2500; Thames Medical, Sussex, UK) as well as their core temperature (via cloacal thermometer), breathing rate and colour of their comb (visual analysis). The outer thigh region of each leg was exposed by careful plucking of the feathers (Fig. 1a) and the skin gently scrubbed with 70% ethanol in water, followed by Hibitane (Hibitane Plus; Regent Medical Ltd, Manchester, UK) in 70% ethanol and iodine (Povidone-Iodine; Seton Healthcare Group PLC, Oldham, UK).

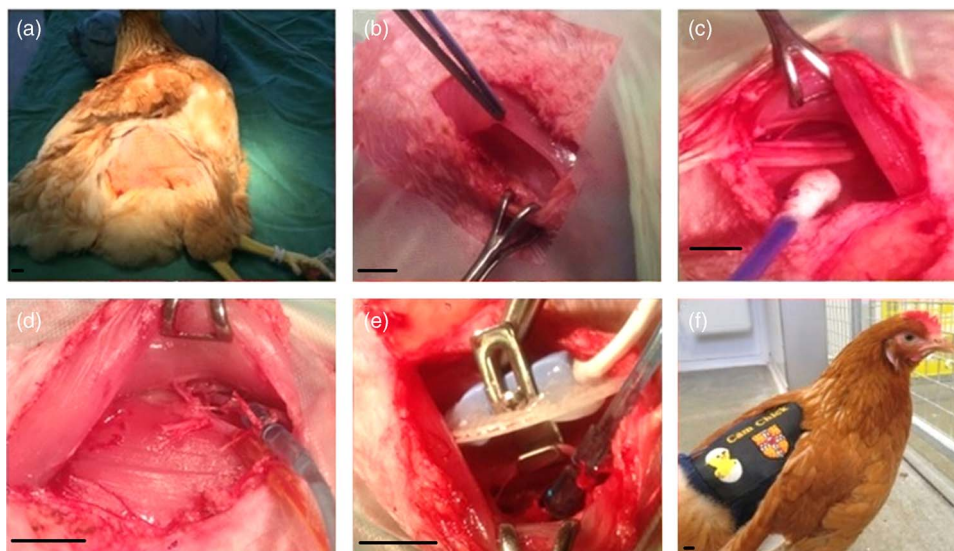
### Surgical procedure

All surgical procedures were performed under aseptic conditions. Using a surgical cauteriser, a 2.5–3 cm incision was made superior to the fat pad on the lateral thigh, where vascularity is reduced (Fig. 1b). Locaine (0.2 ml, 1% w/v lidocaine hydrochloride, 0.002% w/v adrenaline acid tartrate; AnimalCare, York, UK) was injected into the *iliotibialis* muscle using a 25 G needle.

The *iliotibialis* and *semitendinosus* muscles were then separated by careful blunt dissection to expose the femoral artery and

vein (Fig. 1c). Catheters made from polyvinyl chloride (PVC) tubing (1 mm bore, 0.5 mm wall; Altec, St Austell, UK) with a 10 cm PVC extension catheter glued in place (diameter 0.96 mm, bore 0.58 mm; Critchley Electrical Products Pty Ltd, Silverwater, Australia) and filled with non-heparinised saline (0.9% w/v NaCl; AnimalCare Ltd, York, UK) were inserted into both vessels. In order to catheterise, two ligatures were passed around a 1 cm segment of the vessel, and the distal ligature tied securely to occlude the vessel. Whilst the surgical assistant stopped the flow of blood using the proximal ligature, a small incision was made in the vessel, and the catheter threaded in up to the end of the extension catheter before both ligatures were tied around the catheter to hold it securely in place (Fig. 1d). The catheters were plugged with sterile brass pins (Southern, Orpington, UK), and, using an exteriorising needle, were tunneled subcutaneously to the saddle of the chicken to exit through a small incision in the skin. Gelfoam (Pharmacia & Upjohn Co., Michigan, USA) was placed on top of the exposed muscle, and the skin was sewn closed over it using 2.0 Ethilon (Ethicon, San Lorenzo, CA, USA). Once the arterial catheter was in place, it was connected to a pressure transducer (Argon Medical Devices, Plano, TX, USA) filled with heparinised saline (100 i.u./ml heparin in 0.9% NaCl). The transducer was then connected to an M-PAQ system [Maastricht-Programmable Acquisition system (1000 Hz sample rate) with IDEEQ software Version 2.5; Maastricht Instruments, Maastricht, The Netherlands] allowing intraoperative monitoring of arterial blood pressure and heart rate. The surgical steps on the contralateral leg were identical, except that a Transonic flow probe (2RS; Transonic Systems Inc, Ithaca, New York, USA) was placed around the artery (Fig. 1e) and the *iliotibialis*, and *semitendinosus* muscle layers were sewn together over the flow probe (5-0 Mersilk, Ethicon) to hold it in place. The plug of the flow probe was exteriorised as described above. As the arterial catheter was already connected, we were able to record the cardiovascular response to lidocaine administration in the contralateral leg.

A custom-made CamChick jacket was then placed onto the chicken, to house the exteriorised catheters and flow probe cable



**Fig. 1.** Chicken surgery. Chickens were anaesthetised, positioned with their head elevated and feathers plucked from each other thigh (a). The *iliotibialis* and *semitendinosus* muscles were separated (b), revealing the femoral artery and vein (c). On the first leg both the artery and vein were catheterised (d). On the contralateral leg a Transonic flow probe was placed around the artery (e). Following surgery, the chicken was recovered, and the exteriorised catheters and the flow probe lead housed in a custom-made jacket (f). Scale bars represent 1 cm.

when not attached to the M-PAQ system. Four stitches secured the jacket onto the skin to prevent it moving and displacing the catheters and flow probe lead. The chicken was then recovered from anaesthesia by gradually turning off the isoflurane but continuing the administration of oxygen and careful monitoring until consciousness was regained (Fig. 1f). The chicken was then administered Metacam (NSAID, 0.2 ml subcutaneous; Boehringer Ingelheim, Ingelheim am Rhein, Germany) and Baytril (broad-spectrum antibiotic, 0.8 ml intramuscular; Bayer Newbury, UK). Following surgery, birds were single housed but in sight of other birds, given a Buster collar (20 cm Buster birdcollar; Kruuse, Havretoften, Denmark) if necessary, and carefully observed until standing and eating.

### Post-surgical care and daily maintenance

Complete weight bearing was observed between 2–24 h post-surgery. All catheters were flushed daily with heparinised saline (100 i.u./ml heparin in 0.9% NaCl) and an arterial blood sample (0.3 ml) was withdrawn daily to assess post-surgical blood gas, pH and metabolic health. An ABL5 blood analyzer (Radiometer; Copenhagen, measurements corrected to 42°C) was used to determine arterial blood pH, arterial partial pressure of oxygen (PaO<sub>2</sub>), arterial partial pressure of carbon dioxide (PaCO<sub>2</sub>), bicarbonate concentration (HCO<sub>3</sub><sup>-</sup>) and calculated acid-base excess (ABE); an ABL80 blood gas analyzer (Radiometer, measurements corrected to 42°C<sup>10</sup>) measured haemoglobin concentrations (Hb), percentage saturation of oxygen (HbO<sub>2</sub>), methaemoglobin concentrations (MetHb) and haematocrit; an automated glucose/lactate analyzer (Yellow Springs 2300 Stat Plus Glucose/Lactate Analyzer; YSI Ltd, Farnborough, UK) measured blood glucose and lactate concentrations. Chickens were given a daily dose of Metacam for the first 3 days following surgery (0.2 ml subcutaneous), and a daily dose of Baytril (0.8 ml intramuscular) for 7 days following surgery.

### In vivo cardiovascular measurements

During cardiovascular recording, the arterial catheter was connected to a heparinised saline (100 i.u./ml heparin in 0.9% NaCl) filled pressure transducer (Argon Division, Maxxim Medical, Athens, TX, USA) via a blunt 19G needle and the flow probe was connected to a Transonic flow meter (T206; Transonic Systems Inc). Data were recorded via connection of the flow meter and the pressure transducer to an M-PAQ system [Maastricht-Programmable AcQuisition System (1000 Hz sample rate) with IDEEQ software Version 2.5]. Blood pressure was recorded both during surgery and following 5 days of recovery. Blood flow signals sometimes take longer to be able to be registered as the acoustic window encasing the vessel needs to be filled with generated tissue fluid for the electronic signal to be transmitted. In most cases, femoral blood flow could be recorded by the end of the recovery period. Heart rate was calculated continuously by IDEEQ using blood pressure as a trigger. Femoral vascular resistance (FVR) and femoral vascular conductance (FVC) were calculated from arterial blood pressure (ABP) and femoral blood flow (FBF) as an extension of Ohm's law as follows [equations (1) and (2)]:

$$\text{FVR [mmHg/(ml/min)]} = \frac{\text{mean ABP (mmHg)}}{\text{mean FBF (ml/min)}} \quad (1)$$

$$\text{FVC [(ml/min)/mmHg]} = \frac{\text{mean FBF (ml/min)}}{\text{mean ABP (mmHg)}} \quad (2)$$

Heart rate (HR) responses to lidocaine were calculated using a stable baseline of around 2 min before the lidocaine dose, and a time period of 5 min after the lidocaine dose:

$$\text{HR absolute change (bpm)} = \text{lowest HR post-lidocaine} - \text{mean HR pre-lidocaine} \quad (3)$$

$$\text{HR relative change (\%)} = 1 - \left( \frac{\text{lowest HR post-lidocaine}}{\text{mean HR pre-lidocaine}} \right) \times 100 \quad (4)$$

### Statistical analysis

All data are presented as mean ± standard error of the mean (S.E.M.) unless otherwise stated, and comparisons were assessed for statistical significance using the Student's *t*-test for paired data or one-way repeated measures analysis of variance as appropriate (Graphpad Prism: Version 5.00; Graphpad Software Inc, San Diego, CA, USA and SPSS: Version 23; IBM Analytics, New York, USA). For all comparisons, statistical significance was accepted when *P* < 0.05.

### Results

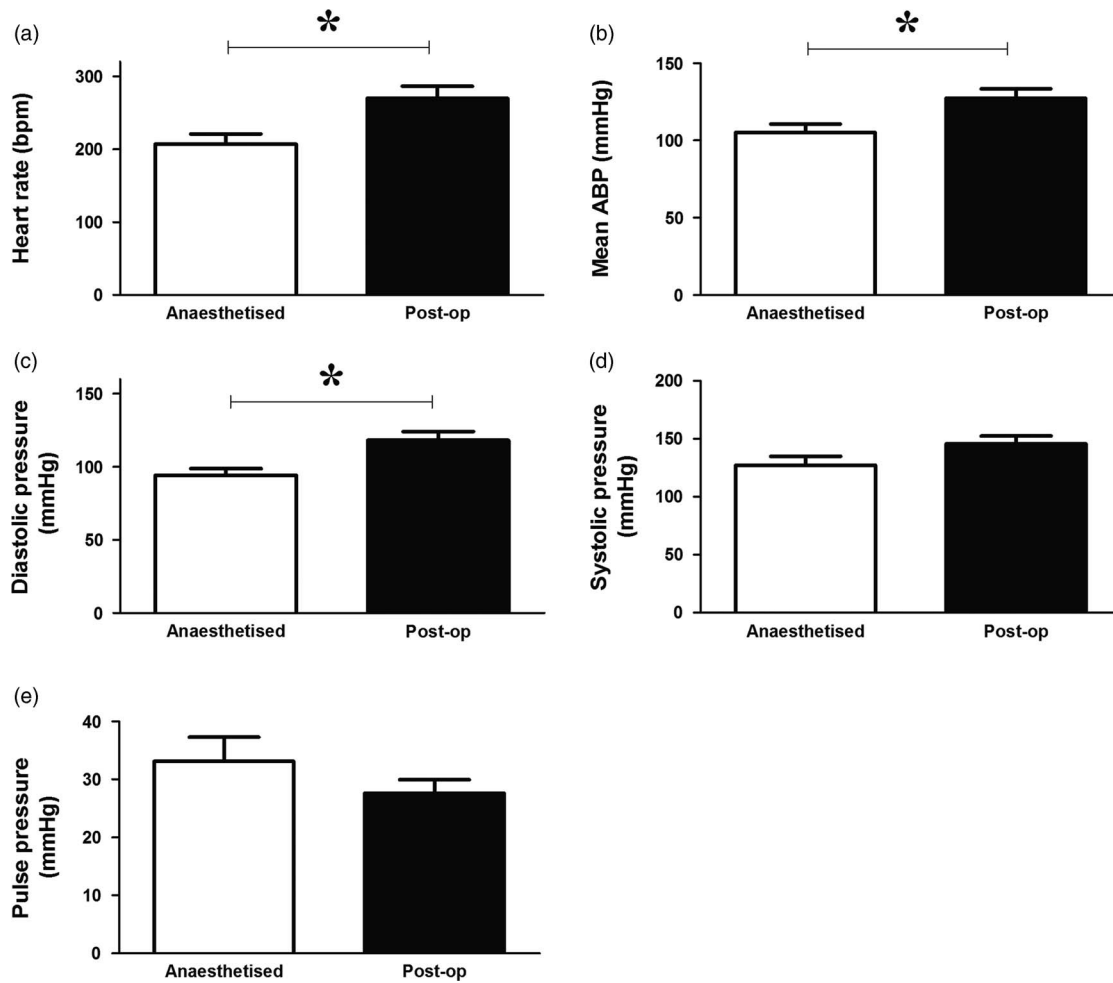
Anaesthesia caused a significant decrease in heart rate (Fig. 2a) as well as a significant reduction in mean arterial blood pressure (Fig. 2b), which was due to a reduction in diastolic pressure rather than systolic blood pressure (Fig. 2c and 2d). There was no significant effect on pulse pressure (Fig. 2e).

Intramuscular administration of lidocaine had no significant effect on arterial blood pressure or pulse pressure, however, it consistently caused a decrease in heart rate (Table 1 and Fig. 3).

During the post-surgical recovery period, there were no significant perturbations in chicken acid-base balance, haemoglobin, methaemoglobin or haematocrit levels, or blood glucose and lactate concentrations (Table 2). Typical values for adult chicken heart rate, arterial blood pressure, femoral vascular flow, resistance and conductance following full surgical recovery are shown in Table 3.

### Discussion

This study established a surgical and experimental protocol for *in vivo* study of cardiovascular function in the adult chicken. The majority of animals were standing and eating within 12 h following surgery, and there were no significant blood gas perturbations. The blood volume of an adult chicken is estimated at 60 ml/kg,<sup>11</sup> and one of the most important factors for success was to minimise any blood loss during the surgery and recovery periods. We found that approaching the isolation of femoral vessels via the lateral thigh was more successful at minimising blood loss than via the inguinal approach. A junction between the *iliotibialis* and *semitendinosus* muscles could be easily found just superior to a fat pad, and the major vessels accessed easily by careful blunt dissection of the overlying muscles. We also found it helpful to place Gelfoam in the incision site just before suturing the wound closed. Occasionally, postoperative bleeding was suspected despite these precautions, and in this situation, we found it was often effective to apply pressure to the leg with a bandage overnight.



**Fig. 2.** Effects of anaesthesia on basal *in vivo* cardiovascular function in the adult chicken. Values are mean  $\pm$  s.e.m. for heart rate (a), mean arterial blood pressure (ABP; b), diastolic blood pressure (c), systolic blood pressure (d) and pulse pressure (e) under anaesthetic and postoperatively (after 5 days of recovery).  $n = 7$  chickens. \*Represents a significant effect of anaesthesia (Student's paired  $t$ -test,  $P < 0.05$ ).

**Table 1.** Heart rate response to lidocaine

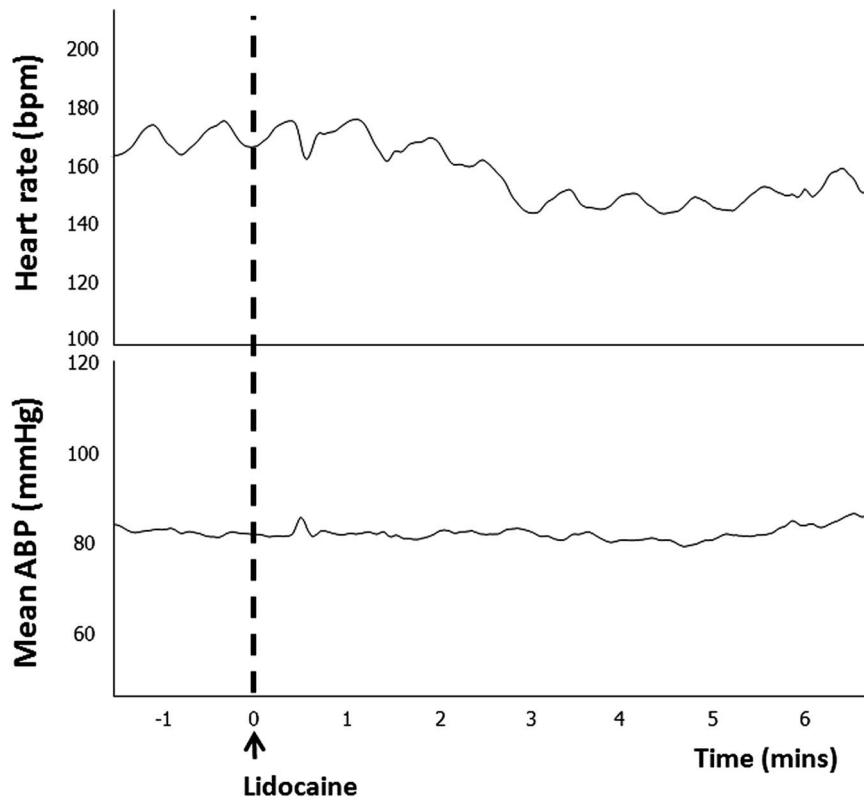
	Chicken 1	Chicken 2	Chicken 3	Chicken 4	Chicken 5	Chicken 6	Chicken 7	Mean $\pm$ s.e.m.
Heart rate change (bpm)	-57.6	-10.4	-6.6	-5.6	-11.7	-25.5	-49.6	-23.8 $\pm$ 8.1
Heart rate change (%)	-27.6	-4.3	-4.0	-2.1	-6.4	-15.1	-23.8	-11.9 $\pm$ 3.9

Values are presented for the absolute change in heart rate and the percentage change in heart rate following intramuscular administration of lidocaine. The final column displays mean changes  $\pm$  s.e.m.

Other studies performing surgery on chickens including our own have utilised injectable anaesthetics, such as ketamine and xylazine.<sup>12–14</sup> We found, however, that using isoflourane was satisfactory and permitted a much faster recovery within minutes. Anaesthesia in birds is notoriously difficult, and the animals must be carefully monitored for changes in heart rate, arterial blood oxygen saturation, breathing rate, comb colour and core body temperature. It is also extremely useful to connect the arterial catheter to a pressure transducer as soon as it is in place; not only does this allow accurate monitoring of arterial blood pressure and heart rate intraoperatively but is also useful to check the optimal positioning of the catheter via examination of the arterial pressure waveform. Lidocaine administration causes bradycardia via mechanisms including a reduction in cardiac

pacemaker activity, decreased sympathetic nerve activity and reduced intraventricular conduction.<sup>15–17</sup> It is therefore especially important to monitor the birds immediately after the lidocaine administration.

Initial attempts were made to channel the catheters and flow probe lead subcutaneously to the origin of the wings, where they were exteriorised and housed in bags attached to Buster collars. However, the extra weight around the neck unbalanced the animals and prolonged the time duration to standing after surgery. Channelling the catheters and the flow probe lead only a short distance to the saddle of the chicken resulted in less bruising and a much faster recovery. Custom-made CamChick jackets were developed to house the catheters and the flow probe lead, and these were tolerated well by the chickens.



**Fig. 3.** Representative example of the *in vivo* cardiovascular response to lidocaine administration. Traces show heart rate and mean arterial blood pressure (ABP) response to a dose of lidocaine (arrow).

**Table 2.** Arterial blood gases during 5 days of surgical recovery

	Postoperative day				
	1	2	3	4	5
pH	7.51 ± 0.01	7.52 ± 0.02	7.50 ± 0.02	7.53 ± 0.02	7.51 ± 0.03
PaO <sub>2</sub> (mmHg)	127.6 ± 2.0	125.7 ± 4.1	117.6 ± 5.9	131.9 ± 8.3	123.4 ± 6.1
PaCO <sub>2</sub> (mmHg)	32.7 ± 1.0	31.3 ± 0.7	30.3 ± 0.7	29.2 ± 1.7	31.5 ± 1.8
HCO <sub>3</sub> <sup>-</sup> (mmol/l)	24.4 ± 1.0	24.6 ± 1.0	23.0 ± 1.0	24.4 ± 1.0	24.9 ± 1.5
ABE (mmol/l)	4.0 ± 1.0	4.1 ± 1.0	2.3 ± 1.2	4.3 ± 1.2	4.0 ± 1.7
HbO <sub>2</sub> (%)	94.2 ± 1.5	93.3 ± 1.7	94.1 ± 1.5	94.9 ± 1.4	91.6 ± 2.6
Hb (g/dl)	5.9 ± 0.5	6.0 ± 0.4	5.3 ± 0.4	5.9 ± 0.4	6.3 ± 0.4
MetHb (%)	5.5 ± 1.4	5.4 ± 1.2	5.4 ± 1.9	4.4 ± 1.5	4.7 ± 1.7
Haematocrit (%)	18.9 ± 1.5	19.0 ± 1.1	17.4 ± 0.5	18.4 ± 1.3	19.2 ± 1.0
Glucose (mmol/l)	12.7 ± 0.5	12.1 ± 0.8	12.4 ± 0.9	11.1 ± 0.5	11.3 ± 0.7
Lactate (mmol/l)	0.96 ± 0.16	0.99 ± 0.16	1.11 ± 0.20	0.93 ± 0.16	0.86 ± 0.23

Mean ± s.e.m. for descending aortic pH, partial pressure of oxygen (PaO<sub>2</sub>), partial pressure of carbon dioxide (PaCO<sub>2</sub>), bicarbonate concentration (HCO<sub>3</sub><sup>-</sup>), acid-base excess (ABE), haemoglobin saturation with oxygen (HbO<sub>2</sub>), haemoglobin concentration (Hb), methaemoglobin concentration (MetHb), haematocrit, glucose concentration and lactate concentration, measured daily for the first 5 days following surgery.

*n* = 7 animals. There were no significant changes over time (one-way repeated measures analysis of variance).

Normal values for blood gases and cardiovascular function of adult chickens can be found in Tables 2 and 3. It should be noted that they have higher basal body core temperature,<sup>10</sup> higher basal arterial blood glucose levels, higher mean arterial blood pressure

and higher heart rate measured *in vivo* compared with many mammalian species, differences which can in part be attributed to the high metabolic rate of avian species.<sup>18</sup>

The surgical protocols outlined permit *in vivo* study of the cardiovascular and metabolic health of post-hatching chickens. We found that chickens placed in a sling (so their feet do not touch the floor) in a dark box are very calm and mostly fall asleep, allowing easy obtainment of artefact-free recordings of cardiovascular function. Basal cardiovascular function can be measured (e.g. blood pressure, heart rate, heart rate variability), and placement of a flow probe additionally allows *in vivo* measurement of blood flow in circulations of interest, and associated calculation of vascular resistance and conductance.<sup>19,20</sup> Stimulated cardiovascular function can also be measured, for instance, the administration of increasing bolus doses of phenylephrine and angiotensin II permits investigation of well-known neuronal and endocrine vasoconstrictor mechanisms *in vivo*.<sup>20–24</sup> Similarly, administration of increasing bolus doses of sodium nitroprusside (SNP) permits investigation of nitric oxide-mediated vasodilator mechanisms *in vivo*.<sup>20,23</sup> Plotting the mean arterial pressure responses to infusion of pressor and depressor drugs against heart rate responses can be used to determine cardiac baroreflex function and investigate autonomic mechanisms in the control of *in vivo* cardiovascular function.<sup>13,20–22,24,25</sup> FVR responses to SNP plotted against the fall in arterial blood pressure further permits determination of vasomotor baroreflex function *in vivo*.<sup>26</sup> Sustained infusion of SNP over 30 min can also be used to study the cardiovascular response to an acute hypotensive challenge.<sup>27</sup> Furthermore, the nitric oxide clamp technique<sup>28,29</sup> can be used to assess the contribution of nitric oxide to the cardiovascular response to pressor and depressor drugs. Blood samples can also be taken during basal

**Table 3.** Basal *in vivo* cardiovascular function

	Chicken 1	Chicken 2	Chicken 3	Chicken 4	Chicken 5	Mean $\pm$ s.e.m.
Heart rate (bpm)	319	230	187	274	288	260 $\pm$ 23
Mean arterial blood pressure (mmHg)	96.0	126.0	104.8	134.1	141.1	120.4 $\pm$ 8.6
Systolic pressure (mmHg)	105.3	156.1	120.3	145.8	152.5	136.0 $\pm$ 9.9
Diastolic pressure (mmHg)	91.4	111.0	97.0	128.2	135.5	112.6 $\pm$ 8.6
Pulse pressure (mmHg)	13.9	45.1	23.3	17.6	17.0	23.4 $\pm$ 5.6
Rate pressure product (bpm $\times$ mmHg)	33,578	35,939	22,519	39,878	43,889	35,161 $\pm$ 3615
Mean femoral blood flow (ml/min)	33.0	21.4	13.7	24.0	33.0	25.0 $\pm$ 3.7
Femoral vascular resistance [mmHg/(ml/min)]	2.91	5.89	7.63	5.68	4.27	5.28 $\pm$ 0.80
Femoral vascular conductance [(ml/min)/mmHg]	0.34	0.17	0.13	0.18	0.23	0.21 $\pm$ 0.04

Values are presented for heart rate, mean arterial blood pressure, systolic pressure, diastolic pressure, pulse pressure, rate pressure product, mean femoral blood flow, mean femoral vascular resistance and mean femoral vascular conductance.

Values were obtained at a minimum of 5 days after surgery. The final column displays mean  $\pm$  s.e.m. across the five surgeries.

and stimulated conditions for subsequent measurement of endocrine responses to challenges, for instance changes in circulating hormones such as catecholamines, adrenocorticotrophic hormone and cortisol, to address changes in the stress axis.<sup>30–32</sup> The avian model could also be used to perform glucose or insulin tolerance tests to determine metabolic function.<sup>33</sup>

Developmental programming of disease is a fast-moving field, and there is much interest in determining the effects of common adverse conditions during development such as maternal obesity,<sup>34</sup> exposure to stress<sup>35</sup> or chronic fetal hypoxia<sup>36</sup> on cardiovascular function in adult offspring. The chicken permits isolation of these effects on the physiology of the offspring, independent of effects via the mother and placenta and is therefore a powerful animal model to enhance the understanding of the field of mechanisms mediating fetal programming.

**Acknowledgements.** D.A.G. is the Professor of Cardiovascular Developmental Physiology & Medicine at the Department of Physiology Development & Neuroscience at the University of Cambridge, Professorial Fellow and Director of Studies in Medicine at Gonville & Caius College, a Lister Institute Fellow and a Royal Society Wolfson Research Merit Award Holder.

**Financial Support.** This work was supported by the British Heart Foundation.

**Conflicts of Interest.** None.

**Ethical Standards.** The authors assert that all procedures contributing to this work comply with the ethical standards of the relevant national guides on the care and use of laboratory animals [the UK Animals (Scientific Procedures) Act 1986] and has been approved by the institutional committee (Local Ethics Review Committee of the University of Cambridge).

## References

- Barker D. *Mothers, Babies and Disease in Later Life*. 1998. Churchill Livingstone: Edinburgh.
- Gluckman PD, Hanson MA, Cooper C, Thornburg KL. Effect of in utero and early-life conditions and adult health and disease. *N Engl J Med*. 2008; 359, 61–73.
- Giussani DA, Davidge ST. Developmental programming of cardiovascular disease by prenatal hypoxia. *J Dev Orig Health Dis*. 2013; 4, 328–337.
- Itani N, Salinas CE, Villena M, *et al*. The highs and lows of programmed cardiovascular disease by developmental hypoxia: studies in the chicken embryo. *J Physiol*. 2017 [Epub ahead of print], <https://doi.org/10.1113/JP274111>.
- Monie IW. Comparative development of the nervous, respiratory, and cardiovascular systems. *Environ Health Perspect*. 1976; 18, 55–60.
- Matthews PA, Samuelsson A-M, Seed P, *et al*. Fostering in mice induces cardiovascular and metabolic dysfunction in adulthood. *J Physiol*. 2011; 58916, 3969–3981.
- Stewart DE, Kirby ML. Endogenous tyrosine hydroxylase activity in the developing chick heart: a possible source of extraneuronal catecholamines. *J Mol Cell Cardiol*. 1985; 17, 389–398.
- Itani N, Skeffington KL, Beck C, Niu Y, Giussani DA. Melatonin rescues cardiovascular dysfunction during hypoxic development in the chick embryo. *J Pineal Res*. 2016; 60, 16–26.
- Tintu A, Rouwet E, Verloren S, *et al*. Hypoxia induces dilated cardiomyopathy in the chick embryo: mechanism, intervention, and long-term consequences. *PLoS One*. 2009; 4, e5155.
- Troxell B, Petri N, Daron C, *et al*. Poultry body temperature contributes to invasion control through reduced expression of Salmonella pathogenicity island 1 genes in Salmonella enterica serovars typhimurium and enteritidis. *Appl Environ Microbiol*. 2015; 81, 8192–8201.
- Morton D, Abbot D, Barclay R, *et al*. Removal of blood from laboratory mammals and birds. *Lab Anim*. 1993; 27, 1–22.
- Salinas CE, Blanco CE, Villena M, Giussani DA. High-altitude hypoxia and echocardiographic indices of pulmonary hypertension in male and female chickens at adulthood. *Circ J*. 2014; 78, 1459–1464.
- Herrera EA, Salinas CE, Blanco CE, Villena M, Giussani DA. High altitude hypoxia and blood pressure dysregulation in adult chickens. *J Dev Orig Health Dis*. 2013; 4, 69–76.
- Ruijtenbeek K, Kessels CGA, Janssen BJA, *et al*. Chronic moderate hypoxia during in ovo development alters arterial reactivity in chickens. *Pflugers Arch*. 2003; 447, 158–167.
- Carmeliet E, Saikawa T. Shortening of the action potential and reduction of pacemaker activity by lidocaine, quinidine and procainamide in sheep cardiac purkinje fibers. *Circ Res*. 1982; 50, 257–272.
- Hogan Q, Stadnicka A, Stekiel T, Bosnjak Z, Kampine J. Effects of epidural and systemic lidocaine on sympathetic activity and mesenteric circulation in rabbits. *Anesthesiology*. 1993; 79, 1250–1260.
- Komai H, Rusy B. Effects of bupivacaine and lidocaine on AV conduction in the isolated rat heart: modification by hyperkalaemia. *Anesthesiology*. 1981; 55, 281–285.
- Holmes J, Austad N. The evolution of avian senescence patterns: implications processes primary understanding aging. *Am Zool*. 1995; 317, 307–317.
- Allison BJ, Brain KL, Niu Y, *et al*. Fetal in vivo continuous cardiovascular function during chronic hypoxia. *J Physiol*. 2015; 594, 1247–1264.

20. Kane AD, Herrera EA, Camm EJ, Giussani DA. Vitamin C prevents intrauterine programming of in vivo cardiovascular dysfunction in the rat. *Circ J*. 2013; 77, 2604–2611.
21. Herrera E, Kane A, Hansell J, et al. A role for xanthine oxidase in the control of fetal cardiovascular function in late gestation sheep. *J Physiol*. 2012; 590(Pt 8), 1825–1837.
22. O'Connor SJ, Ousey JC, Gardner DS, Fowden AL, Giussani DA. Development of baroreflex function and hind limb vascular reactivity in the horse fetus. *J Physiol*. 2006; 572(Pt 1), 155–164.
23. Crossley D, Hicks J, Altimiras J. Ontogeny of baroreflex control in the American alligator *Alligator mississippiensis*. *J Exp Biol*. 2003; 206, 2895–2902.
24. Thakor AS, Giussani DA. Nitric oxide reduces vagal baroreflex sensitivity in the late gestation fetus. *Pediatr Res*. 2009; 65, 269–273.
25. Altimiras J, Crossley DA. Control of blood pressure mediated by baroreflex changes of heart rate in the chicken embryo (*Gallus gallus*). *Am J Physiol Regul Integr Comp Physiol*. 2000; 278, R980–R986.
26. Allison A, Brain K, Niu Y, et al. Impaired cardiac and vasomotor baroreflex responses to hypotension in the chronically hypoxic fetus. *Reprod Sci*. 2014; 21, 82A–83A.
27. Giussani D, Forhead A, Gardner D, et al. Postnatal cardiovascular function after manipulation of fetal growth by embryo transfer in the horse. *J Physiol*. 2003; 547(Pt 1), 67–76.
28. Gardner D, Powlson AS, Giussani D. An in vivo nitric oxide clamp to investigate the influence of nitric oxide on continuous umbilical blood flow during acute hypoxaemia in the sheep fetus. *J Physiol*. 2001; 537, 587–596.
29. Gardner DS, Giussani DA. Enhanced umbilical blood flow during acute hypoxemia after chronic umbilical cord compression: a role for nitric oxide. *Circulation*. 2003; 108, 331–335.
30. O'Connor S, Gardner D, Ousey J, et al. Development of baroreflex and endocrine responses to hypotensive stress in newborn foals and lambs. *Pflugers Arch*. 2005; 450, 298–306.
31. Fletcher A, McGarrigle H, Edwards C, Fowden A, Giussani D. Effects of low dose dexamethasone treatment on basal cardiovascular and endocrine function in fetal sheep during late gestation. *J Physiol*. 2002; 545, 649–660.
32. Thakor AS, Giussani DA. The role of calcitonin gene-related peptide in the in vivo pituitary-adrenocortical response to acute hypoxemia in the late-gestation sheep fetus. *Endocrinology*. 2005; 146, 4871–4877.
33. Musial B, Vaughan OR, Fernandez-Twinn DS, et al. A western-style obesogenic diet alters maternal metabolic physiology with consequences for fetal nutrient acquisition in mice. *J Physiol*. 2017; 595, 4875–4892.
34. Gaillard R. Maternal obesity during pregnancy and cardiovascular development and disease in the offspring. *Eur J Epidemiol*. 2015; 30, 1141–1152.
35. Cottrell E, Seckl JR. Prenatal stress, glucocorticoids and the programming of adult disease. *Front Behav Neurosci*. 2009; 3, 19.
36. Giussani DA, Camm EJ, Niu Y, et al. Developmental programming of cardiovascular dysfunction by prenatal hypoxia and oxidative stress. *PLoS One*. 2012; 7, 310–317.