

# Overestimated discriminatory power of MALDI-TOF mass spectrometry for typing of carbapenem-resistant *Klebsiella pneumoniae* clones – CORRIGENDUM

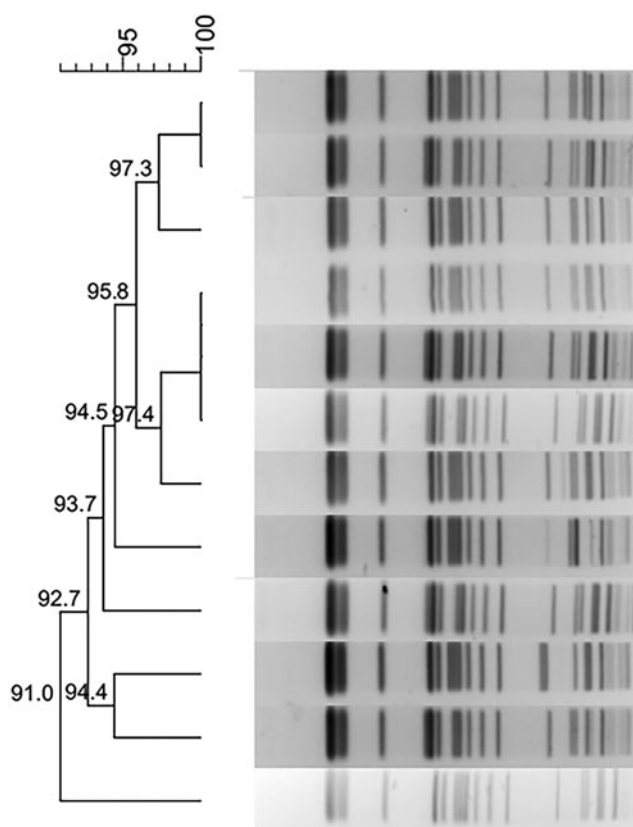
## Corrigendum

**Cite this article:** Jiang F, Kong Z, Cheng C, Kang H, Gu B, Ma P (2020). Overestimated discriminatory power of MALDI-TOF mass spectrometry for typing of carbapenem-resistant *Klebsiella pneumoniae* clones – CORRIGENDUM. *Epidemiology and Infection* **148**, e5, 1–4. <https://doi.org/10.1017/S0950268820000035>

Fei Jiang, Ziyang Kong, Chen Cheng, Haiquan Kang, Bing Gu and Ping Ma

doi: <https://doi.org/10.1017/S0950268819002097>, Published online by Cambridge University Press, 17 December 2019

### Original:



**Fig. 1.** Typing results of PFGE and MLST from 44 CRKP isolates. Two PFGE clones belong to ST337 and ST11, respectively.

© The Author(s), 2020. Published by Cambridge University Press. This is an Open Access article, distributed under the terms of the Creative Commons Attribution licence (<http://creativecommons.org/licenses/by/4.0/>), which permits unrestricted re-use, distribution, and reproduction in any medium, provided the original work is properly cited.

Correction:

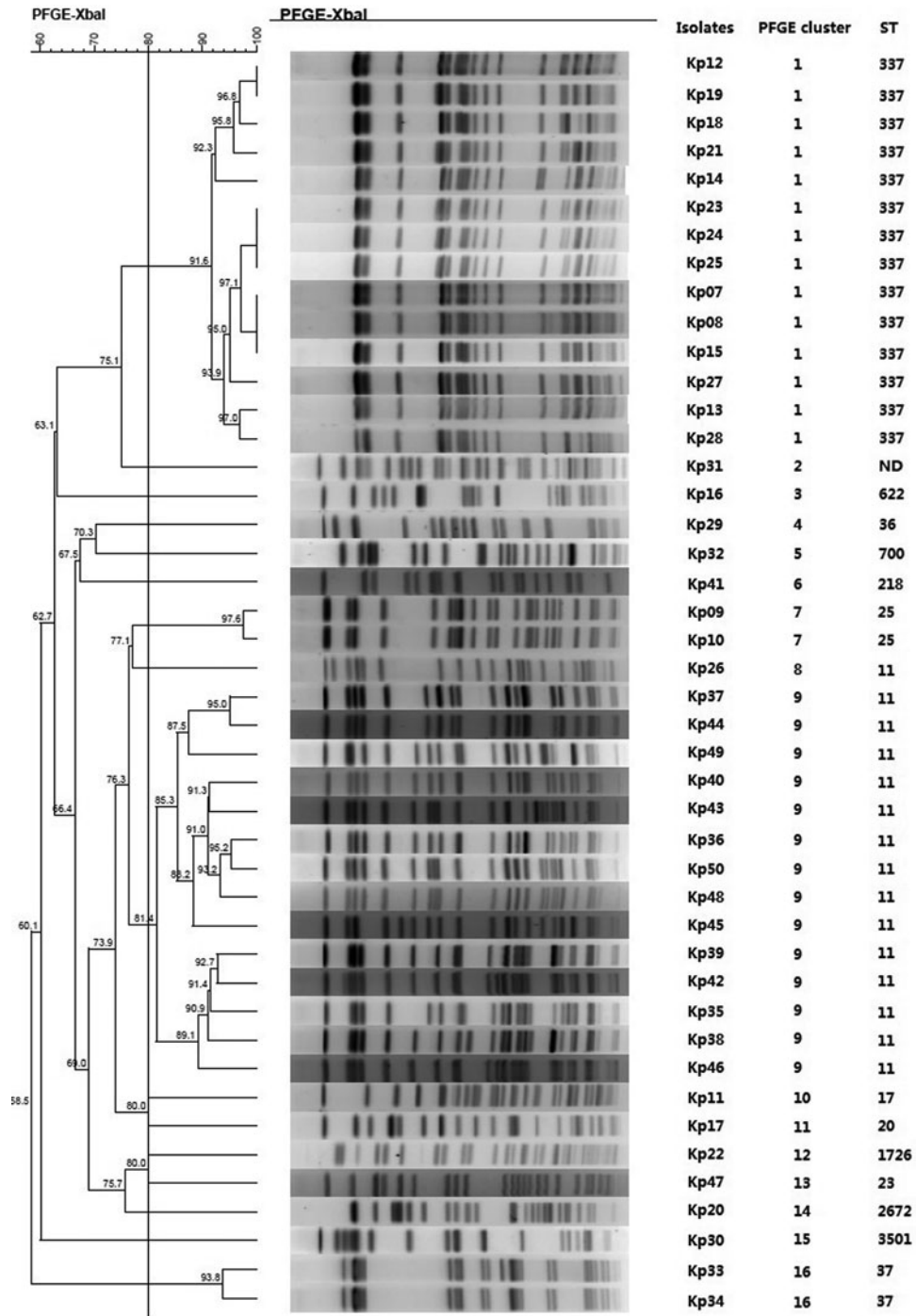
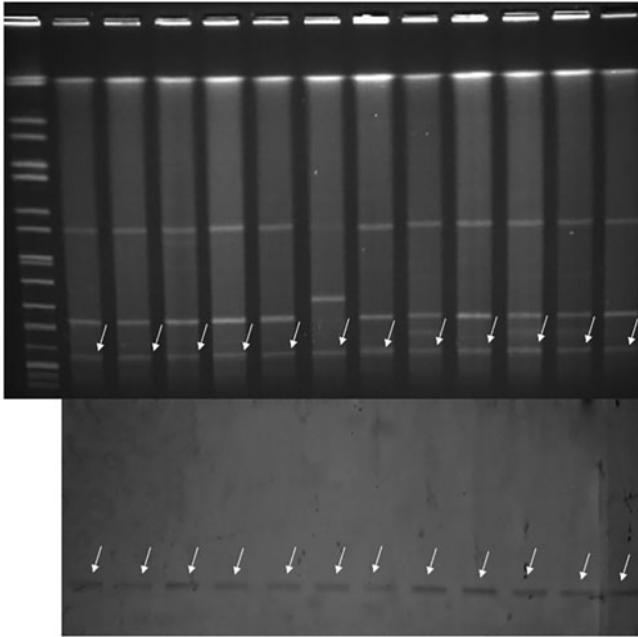


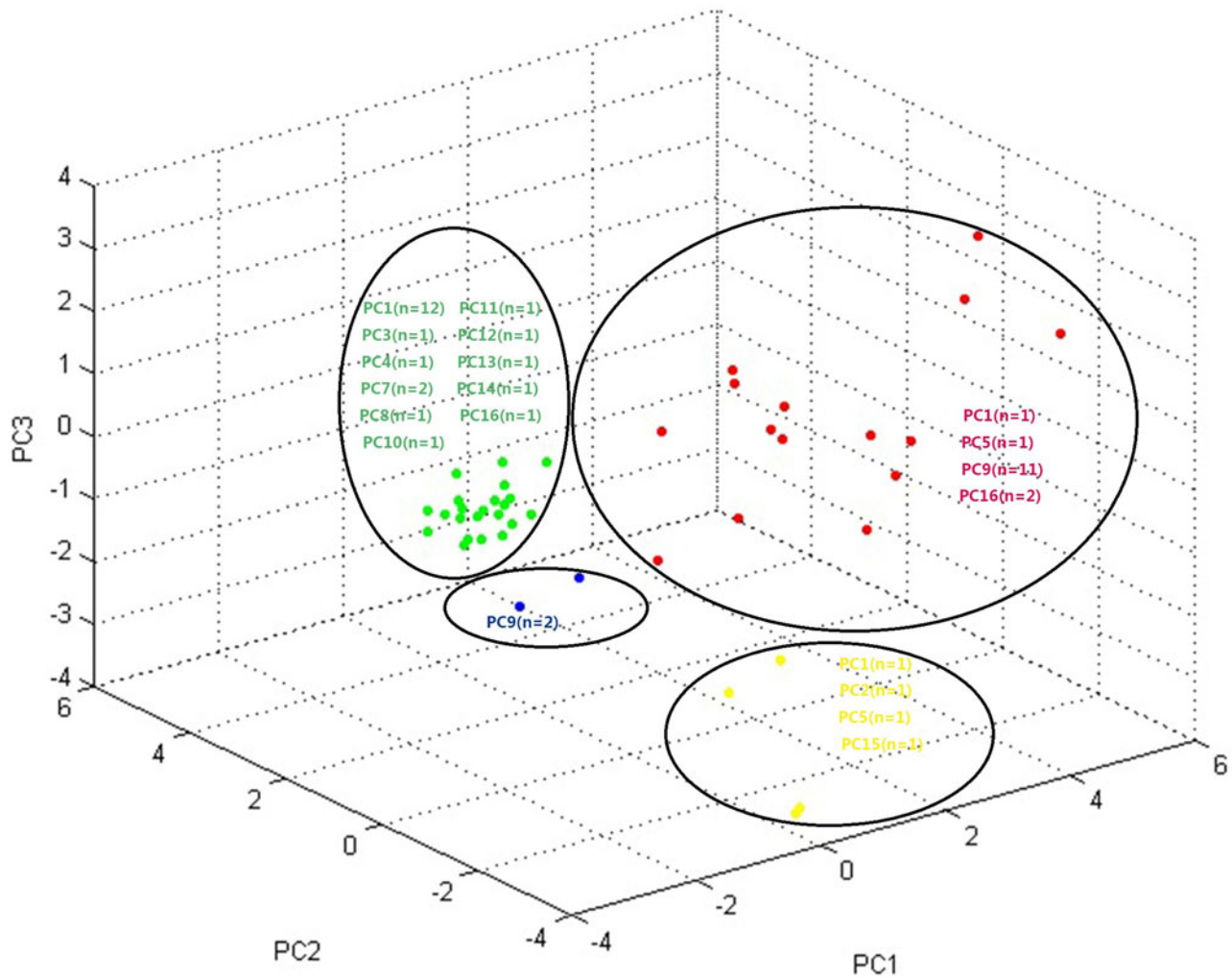
Fig. 1. Typing results of PFGE and MLST from 44 CRKP isolates. Two PFGE clones belong to ST337 and ST11, respectively.

**Original:**



**Fig. 2.** Three-dimensional plot generated by MALDI-TOF MS. Four PCA clusters were identified. Strains from distinct PFGE clusters (PC) were grouped into one MALDI-TOF cluster, and strains belonging to the same PFGE cluster were assigned to more than one MALDI-TOF clusters.

## Correction:



**Fig. 2.** Three-dimensional plot generated by MALDI-TOF MS. Four PCA clusters were identified. Strains from distinct PFGE clusters (PC) were grouped into one MALDI-TOF cluster, and strains belonging to the same PFGE cluster were assigned to more than one MALDI-TOF clusters.

## Reference

Jiang F, Kong Z, Cheng C, Kang H, Gu B, and Ma P (2019). Overestimated discriminatory power of MALDI-TOF mass spectrometry for typing of

carbapenem-resistant *Klebsiella pneumoniae* clones. *Epidemiology and Infection*, **147**, E324. doi:10.1017/S0950268819002097.