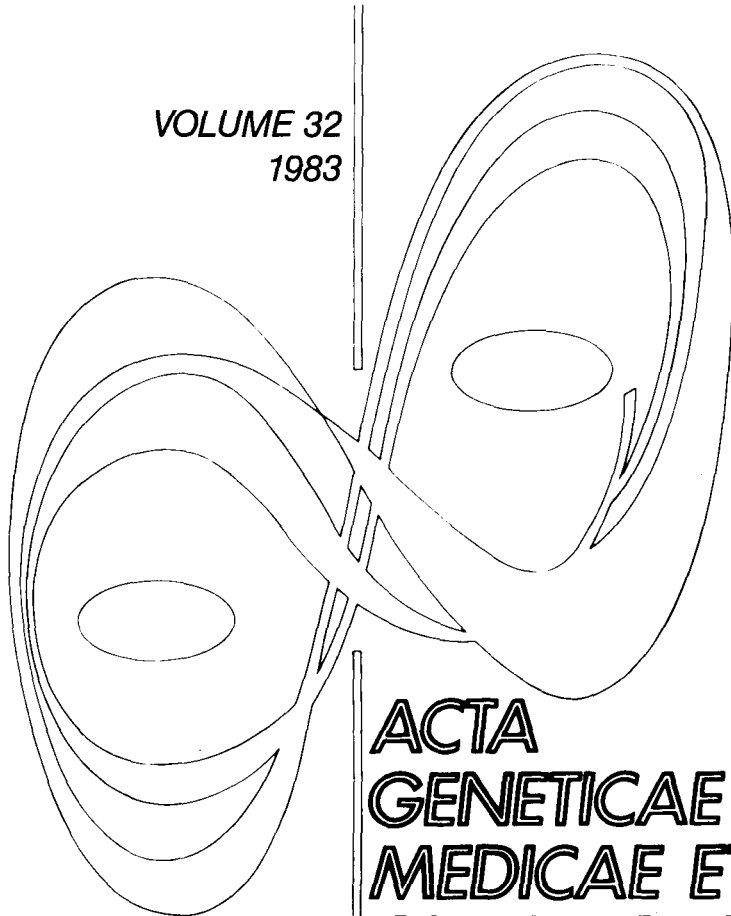


VOLUME 32
1983



**ACTA
GENETICAE
MEDICAE ET
GEMELLOLOGIAE
TWIN RESEARCH**

The Mendel Institute, Rome • Alan R. Liss, Inc., New York

© 1983 Alan R. Liss, Inc.
150 Fifth Avenue
New York, NY 10011

CONTENTS

Volume 32 • Number 1 • 1983

- 1 **Human Behavioral Development and Genetics**
by Ronald S. Wilson
- 17 **Twins Living Apart Test: Progress Report**
by L. Gedda and G. Brenci
- 23 **Genetic and Environmental Determinants of 17 Serum Biochemical Traits in Brazilian Twins**
by Gloria M.D. Dal Colletto, Henrique Krieger, and José Reinaldo Magalhães
- 31 **Congenital Anomalies in Twins in Aberdeen and Northeast Scotland**
by G. Corney, I. MacGillivray, D.M. Campbell, B. Thompson, and J. Little
- 37 **A Note on Ascertainment Probability in the Allen/Hrubec Twin Model**
by Niels V. Holm

LETTER TO THE EDITOR

- 49 **A Response to Holm: Primary and Secondary Ascertainment in Twin Studies**
by Gordon Allen and Zdenek Hrubec
- 53 **Twin Research Abstracts 2**
- 89 **In Memoriam: H. Warner Kloepfer, 1913–1982**
by Chris C. Plato and Wladimir Wertelecki
- 91 **International Society for Twin Studies: Constitution**

Volume 32 • Number 2 • 1983

- 97 **NOTICE TO SUBSCRIBERS**
- 99 **Cost of Care and Prevention of Preterm Births in Twin Pregnancies**
by Raphaël Tresmontant, Gérard Héluin, and Emile Papiernik

- 105 Social Cost of Twin Births**
by Emile Papiernik
- 113 Month of Birth by Zygosity in the NAS-NRC Twin Registry**
by Kenneth S. Kendler and C. Dennis Robinette
- 117 Inheritance and Alcohol as Factors Influencing Plasma Uric Acid Levels**
by J.B. Whitfield and N.G. Martin
- 127 Twin Concordance for a Binary Trait. I. Statistical Models Illustrated With Data on Drinking Status**
by Murray C. Hannah, John L. Hopper, and John D. Mathews
- 139 Behavioral Responses to Amphetamines in Identical Twins**
by John C. Crabbe, Lissy F. Jarvik, Edward H. Liston, and Donald J. Jenden
- 151 Determinants of Birthweight of Twins**
by Ian MacGillivray

Volume 32 • Number 3/4 • 1983

- 159 NOTICE TO SUBSCRIBERS**
- 161 A Multivariate Genetic Analysis of Ridge Count Data From the Offspring of Monozygotic Twins**
by Rita M. Cantor
- 209 Behavioral Patterns in Full-Term and Preterm Twins**
by Marilyn L. Riese
- 221 Cultic Powers of Yoruba Twins: Manifestation of Traditional and Religious Beliefs of the Yoruba**
by T.O. Oruene
- 229 Genetic and Environmental Factors in Head and Face Measurements of Belgian Twins**
by Charles Susanne, Elisabeth Defrise-Gussenhoven, Piet Van Wanseele, and Arille Tassin
- 239 Cigarette Smoking Behavior in Conjoined Twins**
by Murray E. Jarvik, Ellen R. Gritz, and Jed E. Rose
- 245 Neurofibromatosis in Monozygotic Twins: A Case Report**
by Hans Olof Åkesson, Rolf Axelsson, and Birgitta Samuelsson
- 251 Triplet Pregnancies in Linköping, Sweden, 1973–1981**
by Göran Berg, Orvar Finnström, and Anders Selbing

- 257 Quantitative Analysis of C-bands in Chromosomes 1, 9, 16, and Y of Twins**
by Marise P. Pedrosa, F.M. Salzano, Margarete S. Mattevi, and Judith Viegas
- 261 Nutritional Status of Nigerian Village Twins**
by A.O. Salisu and M.A. Hussain
- 265 Twin Research Abstracts 3**
- 313 Author Index to Volume 32**
- 315 Subject Index to Volume 32**