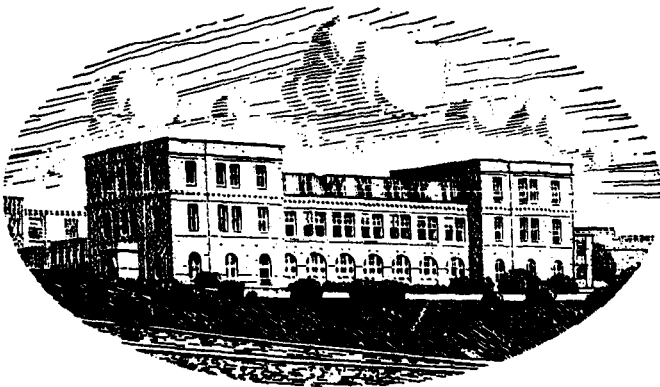


JOURNAL OF THE
MARINE BIOLOGICAL ASSOCIATION
OF THE UNITED KINGDOM

The Council of the Marine Biological Association wish it to be understood that they do not accept responsibility for the accuracy of statements published in this Journal, excepting when those statements are contained in an official report of the Council.

JMBA
JOURNAL OF THE
MARINE BIOLOGICAL ASSOCIATION
OF THE UNITED KINGDOM



THE PLYMOUTH LABORATORY

VOLUME 69

1989

CAMBRIDGE UNIVERSITY PRESS
CAMBRIDGE
LONDON NEW YORK PORT CHESTER MELBOURNE SYDNEY

PUBLISHED BY
THE PRESS SYNDICATE OF THE UNIVERSITY OF CAMBRIDGE

The Pitt Building, Trumpington Street, Cambridge, CB2 1RP
40 West 20th Street, New York, NY 10011, USA
10 Stamford Road, Oakleigh, Melbourne 3166 Australia

© Copyright Marine Biological Association of the UK 1989
Printed in Great Britain at the University Press, Cambridge

CONTENTS : VOLUME 69

Number 1, pp. 1-247, February 1988

	PAGE
The effects of salinity and low temperature on eggs of the Iceland capelin <i>Mallotus villosus</i> . Davenport, J.	1
On the pelagic occurrence and dispersal of the benthic amphipod <i>Corophium volutator</i> . Essink, K., Kleef, H.L. and Visser, W.	11
Morphological adaptations of <i>Aglaophenia harpago</i> (Hydrozoa: Plumulariidae) to enhance feeding efficiency. Hughes, R.G. and Henderson D.H.J.	17
Aspects of the life history of a tide pool population of <i>Amphipolis squamata</i> (Ophiuroidea) from South Devon. Emson, R.H. and Whitfield, P.J.	27
The visual pigments of a deep-water malacosteid fish. Crescitelli, F.	43
Tegumental glands in the paragnaths of <i>Palaemon serratus</i> (Crustacea: Natantia). Alexander, C.G.	53
The life history and reproductive biology of <i>Odostomia eulimoides</i> (Gastropoda: Opisthobranchia) on the south coast of Ireland. McFadden, Y.M.T. and Myers, A.A.	65
The effect of feeding levels on the fecundity of plaice (<i>Pleuronectes platessa</i>). Horwood, J.W., Greer Walker, M. and Witthames, P.	81
New species of <i>Terschellingia</i> (Nematoda: Linhomoeidae) from the Tamar estuary, England and the Maldive Islands. Austen, M.C.	93
Patterns of variation in the dry body weight of <i>Calanus finmarchicus</i> in copepodite Stage V during autumn and winter in the Firth of Clyde. Grigg, H., Holmes, L.J. and Bardwell, S.J.	101
The macrobenthic infauna of the offshore northern North Sea. Eleftheriou, A. and Basford, D.J.	123
On the structure of the inshore fish community of England and Wales. Henderson, P.A.	145
Methylotrophic and autotrophic bacteria isolated from lucinid and thyasirid bivalves containing symbiotic bacteria in their gills. Wood, A.P. and Kelly, D.P.	165
Shell morphology of larval and post-larval mytilids from the north-western Atlantic. Fuller, S.C. and Lutz, R.A.	181
Cadmium and the phosphate granules in <i>Littorina littorea</i> . Nott, J.A. and Langston, W.J.	219
Seasonal and year-to-year changes in the phytoplankton from the Plymouth area, 1963-1986. Maddock, L., Harbour, D.S. and Boalch, G.T.	229
Book Notices	245

Number 2, pp. 249-500, May 1988

Effects of zinc/salinity combinations on zinc regulation in <i>Gammarus duebeni</i> (Liljeborg) from the estuary and the sewage treatment works at Looe, Cornwall. Johnson, I. and Jones, M.B.	249
Osmoregulation of the estuarine prawn <i>Palaemon longirostris</i> (Caridea: Palaemonidae). Campbell, P.J. and Jones, M.B.	261
Relative intraspecific aggressiveness of pedal disc colour phenotypes of the beadlet anemone, <i>Actinia equina</i> . Brace, R.C. and Reynolds, H.A.	273
The succession of generations and growth of the caligid copepods <i>Caligus elongatus</i> and <i>Lepeophtheirus</i> parasitising farmed Atlantic salmon smolts (<i>Salmo salar</i> L.). Tully, O.	279
Patterns of excitation of the lateral line of the ruffe. Gray, J.A.B. and Best, A.C.G.	289
Recolonisation of artificial sediments in the deep Bay of Biscay by tanaidaceans (Crustacea: Peracarida), with a description of a new species of <i>Pseudotanaïs</i> . Bird, G.J. and Holdich, D.M.	307
A presumed male of the parthenogenetic <i>Corophium bonnellii</i> (Milne-Edwards). Myers, A.A., McGrath, D. and Cunningham, P.	319
Seasonal changes in the lipid composition of herring (<i>Clupea harengus</i>) in relation to gonad maturation. Henderson, R.J. and Almatar, S.M.	323
The effects of tributyltin on dog-whelks (<i>Nucella lapillus</i>) from Scottish coastal waters. Bailey, S.K. and Davies, I.M.	335
Reproduction and settlement of <i>Mytilus edulis</i> L. on an exposed rocky shore in Galway Bay, west coast of Ireland. King, P.A., McGrath, D. and Gosling, E.M.	355
The use of graphical methods to estimate demographic parameters. Grant, A.	367
Observations on the reproduction of <i>Modiolus modiolus</i> in Isle of Man waters. Jasim, A.K. and Brand, A.R.	373
The epifauna of the northern North Sea (56°-61°N). Basford, D.J., Eleftheriou, A. and Raffaelli, D.	387
Possible wavelength discrimination by multibank retinae in deep-sea fishes. Denton, E.J. and Locket, N.A.	409
Mercury concentrations in fish from contaminated areas in Scottish waters. Clark, G. and Topping, G.	437
Aspects of histology in <i>Macoma carlottensis</i> (Bivalvia: Tellinidae) and <i>in situ</i> histopathology related to mine-tailings discharge. Bright, D.A. and Ellis, D.V.	447
Experimental studies of the reproductive behaviour of the parasitic copepod <i>Lernaocera branchialis</i> (L.) (Pennellidae). Anstensrud, M.	465
An analysis of the microgrowth bands in the shell of the common mussel <i>Mytilus edulis</i> . Richardson, C.A.	477
Predation on herring larvae and eggs by sand eels (<i>Ammodytes marinus</i> Rait) and <i>Hyperoplus lanceolatus</i> (Lesauvage). Rankine, P.W. and Morrison, J.A.	493
Book Notices	499

Number 3, pp. 501-743, August 1988

Does the fish-killing dinoflagellate <i>Gymnodinium</i> cf. <i>nagasakiense</i> produce cytotoxins? Partensky, F., Le Boterff, J. and Verbist, J.-F.	501
Biometrical changes during growth of isolated individuals of <i>Balanus improvisus</i> . Furman, E.R. and Crisp, D.J.	511
Distribution and structure of luminous cells in four marine copepods. Bannister, N.J. and Herring P.J.	523
Seasonal variations in fecundity and egg size of the common goby, <i>Pomatoschistus microps</i> . Rogers, S.I.	535
Feeding pattern of <i>Sepia officinalis</i> (Cephalopoda: Sepioididea) in the Ria de Vigo (NW Spain). Castro, B.G. and Guerra, A.	545
Photomorphogenesis in early development of <i>Tilopteris mertensii</i> (Tilopteridales: Phaeophyceae). Kuhlenkamp, R.	555
The shell of <i>Cardium edule</i> , <i>Cardium glaucum</i> and <i>Ruditapes philippinarum</i> : organic contents, proximate composition and energy value, as determined by different methods. Gouletquer, P. and Wolowicz, M.	563
A comparison of the intertidal harpacticoid copepod assemblages of sandy beaches in Galway Bay (Ireland) and northern Brittany (France). Bodin, P. and Jackson, D.F.	573
Energy values of marine benthic invertebrates from the western English Channel. Dauvin, J.-C. and Joncourt, M.	589
On the muscle fibres and locomotor activity of doliolids (Tunicata: Thaliacea). Bone, Q.	597
Rapid hatching induced by light intensity reduction in the polyopisthocotylean monogenean <i>Plectanocotyle gurnardi</i> from the gills of gurnards (Triglidae), with observations on the anatomy and behaviour of the oncomiracidium. Whittington, I.D. and Kearn, G.C.	609
Modelling of phytoplankton population dynamics in an enclosed water column. Andersen, V. and Nival, P.	625
Escape responses of herring larvae to visual stimuli. Batty, R.S.	647
A note on the distribution and diet of deep-water rays (Rajidae) in an area of the Rockall Trough. Gordon, J.D.M. and Duncan, J.A.R.	655
Feeding potential in the lecithotrophic larvae of <i>Adalaria proxima</i> and <i>Tritonia hombergi</i> : an evolutionary perspective. Kempf, S.C. and Todd, C.D.	659
Salinity effects on brood maturation of the mysid crustacean <i>Mesopodopsis slabberi</i> . Greenwood, J.G., Jones, M.B. and Greenwood, J.	683
Extended pre-feeding period in planktotrophic larvae of the bathyal echinoid <i>Aspidodiadema jacobyi</i> . Young, C.M., Cameron, J.L. and Eckelbarger, K.J.	695
The spatial distribution of <i>Perkinsus marinus</i> , a protozoan parasite, in relation to its oyster host (<i>Crassostrea virginica</i>) and an ectoparasitic gastropod (<i>Boonea impressa</i>). White, M.E., Powell, E.N., Wilson, E.A. and Ray, S.M.	703

Abstracts: Light and Life in the Sea	719
Short Communication: A rod-and-line fishery for herrings at Plymouth, 1937-1953. Kelley, D.F.	739
Book Notices	741

Number 4, pp. 745-975, November 1988

The First Leslie Cooper Memorial Lecture: Gaia. Lovelock, J.E.	745
The Gaia hypothesis - fact or fancy? Craik, J.C.A.	759
Morphology of the nervous system of barnacles: the median ocellus of <i>Balanus hameri</i> (= <i>Chirona hameri</i>) (Crustacea: Cirripedia). Clare, A.S. and Walker, G.	769
<i>In situ</i> foraging and feeding behaviour of narcomedusae (Cnidaria: Hydrozoa). Larson, R.J., Mills, C.E. and Harbison, G.R.	785
Laboratory studies on the development of <i>Nephrops norvegicus</i> larvae. Thompson, B.M. and Ayers, R.A.	795
Narcotising sea anemones. Moore, S.J.	803
Long term trends in the occurrence of <i>Phaeocystis</i> sp. in the north-east Atlantic. Owens, N.J.P., Cook, D., Colebrook, M., Hunt, H. and Reid, P.C.	813
<i>Mytilicola intestinalis</i> (Copepoda: Cyclopoida): a ten year survey of infested mussels in a Cornish estuary, 1978-1988. Davey, J.T.	823
Shell shape variation in <i>Littorina saxatilis</i> and <i>L. arcana</i> : a case of character displacement. Grahame, J. and Mill, P.J.	837
A sibling species group of <i>Hydractinia</i> in the north-eastern United States. Buss, L.W. and Yund, P.O.	857
Redescription of <i>Nephtys assimilis</i> and <i>N. kersivalensis</i> (Polychaeta: Phyllodocida) and a key to <i>Nephtys</i> from northern Europe. Rainer, S.F.	875
Assimilation of dietary sterols and faecal contribution of lipids by the marine invertebrates <i>Neomysis integer</i> , <i>Scrobicularia plana</i> and <i>Nereis diversicolor</i> . Bradshaw, S.A., O'Hara, S.C.M., Corner, E.D.S. and Eglinton, G.	891
The drift amphipod <i>Hyale grimaldii</i> in Irish and British waters. McGrath, D. and Myers, A.A.	913
Announcement	913
Book Notices	921
Report of the Council for 1988-89	923
Financial Statement 1988-89	969

CORRIGENDA

Page 125, for legend to Figure 2 read legend to Figure 3 and vice versa.

Page 525, for scale bars labelled 1 cm read 1 mm.

AUTHOR INDEX : VOLUME 69

	PAGE
Alexander, C.G.	
Tegumental glands in the paragnaths of <i>Palaemon serratus</i> (Crustacea: Natantia)	53
Almatar, S.M., <i>see</i> Henderson and Almatar	323
Andersen, V. and Nival, P.	
Modelling of phytoplankton population dynamics in an enclosed water column	625
Anstensrud, M.	
Experimental studies of the reproductive behaviour of the parasitic copepod <i>Lernaecera branchialis</i> (L.) (Pennellidae)	465
Austen, M.C.	
New species of <i>Terschellingia</i> (Nematoda: Linhomoeidae) from the Tamar estuary, England and the Maldive Islands	93
Ayers, R.A., <i>see</i> Thompson and Ayers	795
Bailey, S.K. and Davies, I.M.	
The effects of tributyltin on dog-whelks (<i>Nucella lapillus</i>) from Scottish coastal waters	335
Bannister, N.J. and Herring P.J.	
Distribution and structure of luminous cells in four marine copepods	523
Bardwell, S.J., <i>see</i> Grigg, Holmes and Bardwell	101
Basford, D.J., Eleftheriou, A. and Raffaelli, D.	
The epifauna of the northern North Sea (56°-61°N)	387
<i>See also</i> Eleftheriou and Basford	123
Batty, R.S.	
Escape responses of herring larvae to visual stimuli	647
Best, A.C.G., <i>see</i> Gray and Best	289
Bird, G.J. and Holdich, D.M.	
Recolonisation of artificial sediments in the deep Bay of Biscay by tanaidaceans (Crustacea: Peracarida), with a description of a new species of <i>Pseudotanais</i>	307
Boalch, G.T., <i>see</i> Maddock, Harbour and Boalch	229
Bodin, P. and Jackson, D.F.	
A comparison of the intertidal harpacticoid copepod assemblages of sandy beaches in Galway Bay (Ireland) and northern Brittany (France)	573
Bone, Q.	
On the muscle fibres and locomotor activity of doliolids (Tunicata: Thaliacea)	597

Brace, R.C. and Reynolds, H.A. Relative intraspecific aggressiveness of pedal disc colour phenotypes of the beadlet <i>anemone, Actinia equina</i>	273
Bradshaw, S.A., O'Hara, S.C.M., Corner, E.D.S. and Eglinton, G. Assimilation of dietary sterols and faecal contribution of lipids by the marine invertebrates <i>Neomysis integer, Scrobicularia plana</i> and <i>Nereis diversicolor</i>	891
Brand, A.R., <i>see</i> Jasim and Brand	373
Bright, D.A. and Ellis, D.V. Aspects of histology in <i>Macoma carlottensis</i> (Bivalvia: Tellinidae) and <i>in situ</i> histopathology related to mine-tailings discharge	447
Buss, L.W. and Yund, P.O. A sibling species group of <i>Hydractinia</i> in the north-eastern United States	857
Cameron, J.L., <i>see</i> Young, Cameron and Eckelbarger	695
Campbell, P.J. and Jones, M.B. Osmoregulation of the estuarine prawn <i>Palaemon longirostris</i> (Caridea: Palaemonidae)	261
Castro, B.G. and Guerra, A. Feeding pattern of <i>Sepia officinalis</i> (Cephalopoda: Sepioididea) in the Ria de Vigo (NW Spain)	545
Clare, A.S. and Walker, G. Morphology of the nervous system of barnacles: the median ocellus of <i>Balanus hameri</i> (= <i>Chirona hameri</i>) (Crustacea: Cirripedia)	769
Clark, G. and Topping, G. Mercury concentrations in fish from contaminated areas in Scottish waters	437
Colebrook, M., <i>see</i> Owens <i>et al.</i>	813
Cook, D., <i>see</i> Owens <i>et al.</i>	813
Corner, E.D.S., <i>see</i> Bradshaw <i>et al.</i>	891
Craik, J.C.A. The Gaia hypothesis - fact or fancy?	759
Crescitelli, F. The visual pigments of a deep-water malacosteid fish	43
Crisp, D.J., <i>see</i> Furman and Crisp	511
Cunningham, P., <i>see</i> Myers, McGrath and Cunningham	319
Dauvin, J.-C. and Joncourt, M. Energy values of marine benthic invertebrates from the western English Channel	589
Davenport, J. The effects of salinity and low temperature on eggs of the Iceland capelin <i>Mallotus villosus</i>	1
Davey, J.T. <i>Mytilicola intestinalis</i> (Copepoda: Cyclopoida): a ten year survey of infested mussels in a Cornish estuary, 1978-1988	823

Davies, I.M., <i>see</i> Bailey and Davies	335
Denton, E.J. and Lockett, N.A. Possible wavelength discrimination by multibank retinæ in deep-sea fishes	409
Duncan, J.A.R., <i>see</i> Gordon and Duncan	655
Eckelbarger, K.J., <i>see</i> Young, Cameron and Eckelbarger	695
Eglinton, G., <i>see</i> Bradshaw <i>et al.</i>	891
Eleftheriou, A. and Basford, D.J. The macrobenthic infauna of the offshore northern North Sea	123
<i>See also</i> Basford, Eleftheriou and Raffaelli	387
Ellis, D.V., <i>see</i> Bright and Ellis	447
Emson, R.H. and Whitfield, P.J. Aspects of the life history of a tide pool population of <i>Amphipolis squamata</i> (Ophiuroidea) from South Devon	27
Essink, K., Kleef, H.L. and Visser, W. On the pelagic occurrence and dispersal of the benthic amphipod <i>Corophium volutator</i>	11
Fuller, S.C. and Lutz, R.A. Shell morphology of larval and post-larval mytilids from the north-western Atlantic	181
Furman, E.R. and Crisp, D.J. Biometrical changes during growth of isolated individuals of <i>Balanus improvisus</i>	511
Gordon, J.D.M. and Duncan, J.A.R. A note on the distribution and diet of deep-water rays (Rajidae) in an area of the Rockall Trough	655
Gosling, E.M., <i>see</i> King, McGrath and Gosling	355
Gouletquer, P. and Wolowicz, M. The shell of <i>Cardium edule</i> , <i>Cardium glaucum</i> and <i>Ruditapes philippinarum</i> : organic contents, proximate composition and energy value, as determined by different methods	563
Grahame, J. and Mill, P.J. Shell shape variation in <i>Littorina saxatilis</i> and <i>L. arcana</i> : a case of character displacement	837
Grant, A. The use of graphical methods to estimate demographic parameters	367
Gray, J.A.B. and Best, A.C.G. Patterns of excitation of the lateral line of the ruffe	289
Greenwood, J., <i>see</i> Greenwood, Jones and Greenwood	683
Greenwood, J.G., Jones, M.B. and Greenwood, J. Salinity effects on brood maturation of the mysid crustacean <i>Mesopodopsis slabberi</i>	683
Greer Walker, M., <i>see</i> Horwood, Greer Walker and Witthames	81

Grigg, H., Holmes, L.J. and Bardwell, S.J. Patterns of variation in the dry body weight of <i>Calanus finmarchicus</i> in copepodite Stage V during autumn and winter in the Firth of Clyde	101
Guerra, A., <i>see</i> Castro and Guerra	545
Harbison, G.R., <i>see</i> Larson, Mills and Harbison	785
Harbour, D.S., <i>see</i> Maddock, Harbour and Boalch	229
Henderson, D.H.J., <i>see</i> Hughes and Henderson	17
Henderson, P.A. On the structure of the inshore fish community of England and Wales	145
Henderson, R.J. and Almatar, S.M. Seasonal changes in the lipid composition of herring (<i>Clupea harengus</i>) in relation to gonad maturation	323
Herring, P.J., <i>see</i> Bannister and Herring	523
Holdich, D.M., <i>see</i> Bird and Holdich	307
Holmes, L.J., <i>see</i> Grigg, Holmes and Bardwell	101
Horwood, J.W., Greer Walker, M. and Witthames, P. The effect of feeding levels on the fecundity of plaice (<i>Pleuronectes platessa</i>)	81
Hughes, R.G. and Henderson D.H.J. Morphological adaptations of <i>Aglaophenia harpago</i> (Hydrozoa: Plumulariidae) to enhance feeding efficiency	17
Hunt, H., <i>see</i> Owens <i>et al.</i>	813
Jackson, D.F., <i>see</i> Bodin and Jackson	573
Jasim, A.K. and Brand, A.R. Observations on the reproduction of <i>Modiolus modiolus</i> in Isle of Man waters	373
Johnson, I. and Jones, M.B. Effects of zinc/salinity combinations on zinc regulation in <i>Gammarus duebeni</i> (Liljeborg) from the estuary and the sewage treatment works at Looe, Cornwall	249
Joncourt, M., <i>see</i> Dauvin and Joncourt	589
Jones, M.B., <i>See</i> Campbell and Jones	261
<i>See</i> Greenwood, Jones and Greenwood	683
<i>See</i> Johnson and Jones	249
Kearn, G.C., <i>see</i> Whittington and Kearn	609
Kelly, D.P., <i>see</i> Wood and Kelly	165
Kempf, S.C. and Todd, C.D. Feeding potential in the lecithotrophic larvae of <i>Adalaria proxima</i> and <i>Tritonia hombergi</i> : an evolutionary perspective	659

King, P.A., McGrath, D. and Gosling, E.M. Reproduction and settlement of <i>Mytilus edulis</i> L. on an exposed rocky shore in Galway Bay, west coast of Ireland	355
Kleef, H.L., <i>see</i> Essink, Kleef and Visser	11
Kuhlenkamp, R. Photomorphogenesis in early development of <i>Tilopteris mertensii</i> (Tilopteridales: Phaeophyceae)	555
Langston, W.J., <i>see</i> Nott and Langston	219
Larson, R.J., Mills, C.E. and Harbison, G.R. <i>In situ</i> foraging and feeding behaviour of narcomedusae (Cnidaria: Hydrozoa)	785
Le Boterff, J., <i>see</i> Partensky, Le Boterff and Verbist	501
Locket, N.A., <i>see</i> Denton and Locket	409
Lovelock, J.E. The First Leslie Cooper Memorial Lecture: Gaia	745
Lutz, R.A., <i>see</i> Fuller and Lutz	181
McFadden, Y.M.T. and Myers, A.A. The life history and reproductive biology of <i>Odostomia eulimoides</i> (Gastropoda: Opisthobranchia) on the south coast of Ireland	65
McGrath, D. and Myers, A.A. The drift amphipod <i>Hyale grimaldii</i> in Irish and British waters	913
<i>See also</i> King, McGrath and Gosling	355
<i>See also</i> Myers, McGrath and Cunningham	319
Maddock, L., Harbour, D.S. and Boalch, G.T. Seasonal and year-to-year changes in the phytoplankton from the Plymouth area, 1963-1986	229
Mill, P.J., <i>see</i> Grahame and Mill	837
Mills, C.E., <i>see</i> Larson, Mills and Harbison	785
Moore, S.J. Narcotising sea anemones	803
Morrison, J.A., <i>see</i> Rankine and Morrison	493
Myers, A.A. <i>See</i> McFadden and Myers	65
<i>See</i> McGrath and Myers	913
Myers, A.A., McGrath, D. and Cunningham, P. A presumed male of the parthenogenetic <i>Corophium bonnellii</i> (Milne-Edwards)	319
Nival, P., <i>see</i> Andersen and Nival	625
Nott, J.A. and Langston, W.J. Cadmium and the phosphate granules in <i>Littorina littorea</i>	219

O'Hara, S.C.M., <i>see</i> Bradshaw <i>et al.</i>	891
Owens, N.J.P., Cook, D., Colebrook, M., Hunt, H. and Reid, P.C. Long term trends in the occurrence of <i>Phaeocystis</i> sp. in the north-east Atlantic	813
Partensky, F., Le Boterff, J. and Verbist, J.-F. Does the fish-killing dinoflagellate <i>Gymnodinium</i> cf. <i>nagasakiense</i> produce cytotoxins?	501
Powell, E.N., <i>see</i> White <i>et al.</i>	703
Raffaelli, D., <i>see</i> Basford, Eleftheriou and Raffaelli	387
Rainer, S.F. Redescription of <i>Nephtys assimilis</i> and <i>N. kersivalensis</i> (Polychaeta: Phyllodocida) and a key to <i>Nephtys</i> from northern Europe	875
Rankine, P.W. and Morrison, J.A. Predation on herring larvae and eggs by sand eels (<i>Ammodytes marinus</i> Rait) and <i>Hyperoplus lanceolatus</i> (Lesauvage)	493
Ray, S.M., <i>see</i> White <i>et al.</i>	703
Reid, P.C., <i>see</i> Owens <i>et al.</i>	813
Reynolds, H.A., <i>see</i> Brace and Reynolds	273
Richardson, C.A. An analysis of the microgrowth bands in the shell of the common mussel <i>Mytilus edulis</i>	477
Rogers, S.I. Seasonal variations in fecundity and egg size of the common goby, <i>Pomatoschistus microps</i>	535
Thompson, B.M. and Ayers, R.A. Laboratory studies on the development of <i>Nephrops norvegicus</i> larvae	795
Todd, C.D., <i>see</i> Kempf and Todd	659
Topping, G., <i>see</i> Clark and Topping	437
Tully, O. The succession of generations and growth of the caligid copepods <i>Caligus elongatus</i> and <i>Lepeophtheirus</i> parasitising farmed Atlantic salmon smolts (<i>Salmo salar</i> L.)	279
Verbist, J.-F., <i>see</i> Partensky, Le Boterff and Verbist	501
Visser, W., <i>see</i> Essink, Kleef and Visser	11
Walker, G., <i>see</i> Clare and Walker	769
White, M.E.; Powell, E.N., Wilson, E.A. and Ray, S.M. The spatial distribution of <i>Perkinsus marinus</i> , a protozoan parasite, in relation to its oyster host (<i>Crassostrea virginica</i>) and an ectoparasitic gastropod (<i>Boonea impressa</i>)	703
Whitfield, P.J., <i>see</i> Emson and Whitfield	27

Whittington, I.D. and Kearn, G.C. Rapid hatching induced by light intensity reduction in the polyopisthocotylean monogenean <i>Plectanocotyle gurnardi</i> from the gills of gurnards (Triglidae), with observations on the anatomy and behaviour of the oncomiracidium	609
Wilson, E.A., <i>see</i> White <i>et al.</i>	703
Witthames, P., <i>see</i> Horwood, Greer Walker and Witthames	81
Wolowicz, M., <i>see</i> Gouletquer and Wolowicz	563
Wood, A.P. and Kelly, D.P. Methylotrophic and autotrophic bacteria isolated from lucinid and thyasirid bivalves containing symbiotic bacteria in their gills	165
Young, C.M., Cameron, J.L. and Eckelbarger, K.J. Extended pre-feeding period in planktotrophic larvae of the bathyal echinoid <i>Aspidodiadema jacobyi</i>	695
Yund, P.O., <i>see</i> Buss and Yund	857
SHORT COMMUNICATION	
Kelley, D.F. A rod-and-line fishery for herrings at Plymouth, 1937-1953	739

SUBJECT INDEX : VOLUME 69

Behaviour

- Escape responses of herring larvae to visual stimuli, 647-654
- Feeding behaviour of narcomedusae, 785-794
- Herring taken by rod and line fishing, 739
- Ingested and faecal lipids in three marine invertebrates, 891-911
- Intraspecific aggression in *Actinia equina*, 273-278
- Pelagic dispersal of *Corophium volutator*, 11-15

Biochemistry

- Calorific values for benthic invertebrates, 589-595
- Lipid composition of herring related to maturation, 323-334
- Metabolic aspects of bacterial symbionts, 165-179
- Organic content and composition of mollusc shells, 563-572

Breeding, Rearing and Fecundity

- Fecundity and egg size in gobies, 535-543
- Fecundity of plaice, 81-92
- Reproduction of *Modiolus modiolus*, 373-385
- Reproduction and settlement of *Mytilus edulis*, 335-365
- Reproductive biology of *Odostomia eulimoides*, 65-80

Comparative Anatomy

- Barnacle neuro-anatomy, 769-784
- Biometrics of growth in *Balanus improvisus*, 511-521
- Hydrozoan morphology related to food capture, 17-25
- Shell morphology and speciation in young mytilids, 181-218
- Shell shape variation in two periwinkle species, 837-855
- Structure of bioluminescent glands in four copepod species, 523-533

Development, Growth and Maturation

- Development of *Nephrops* larvae, 795-801
- Photomorphogenesis in germinating *Tilopteris* eggs, 555-562
- Seasonal variation of dry body weight in *Calanus*, 101-122

Ecology and Distribution

- Distribution of two parasite species in oyster beds, 703-717
- Epifauna of the northern North Sea, 387-407
- Hyale grimaldii*, a drift amphipod found in Galway Bay, 913-918
- Inshore fish communities of England and Wales, 145-163
- Intertidal copepod assemblages in different localities, 573-588
- Long-term phytoplankton changes in Plymouth sea area, 229-244
- North Sea macrobenthic infauna, 123-143
- Recolonisation of perturbed deep-sea sediments, 307-317

Feeding and Nutrition

- Delayed onset of feeding behaviour in deep-sea planktotrophic echinoid larvae, 695-702
- Feeding ability of larvae of two nudibranch species, 659-682
- Feeding of narcomedusae, 785-794
- Feeding patterns in cuttlefish, 545-553
- Gut contents of deep-water rays, 655-658
- Metabolic study of methylotrophic and autotrophic bacteria, 165-179
- Sand-eels feeding on herring eggs and larvae, 493-498

Global Studies

- The Gaia hypothesis, 745-757; 759-768

New Species

- Hydractinia symbiolongicarpus* sp. nov., 863
- Hydractinia symbiopollicaris* sp. nov., 867
- Pseudotanaïs colonus* sp. nov., 307-317
- Terschellingia goubaultae* sp. nov., 93-99

Parasitology

- Interaction of two parasites of oysters, 703-717
- Monogenean gill parasite, *Plectanocotyle gurnardi*, 609-624
- Myticola intestinalis*, more commensal than parasitic, 823-836
- Parasitic copepods of farmed salmon, 279-287
- Reproduction of copepod gill parasites of cod, 465-476

Physiology and Experimental Biology

- Effect of salinity on brooding mysids, 683-694
- Excitation in tunicate locomotor muscle fibres, 597-607
- Factors affecting microgrowth shell bands of *Mytilus*, 477-491
- Fecundity related to nutrition in plaice, 81-92
- Hatching of gill parasite eggs induced by reduced light, 609-624
- Intraspecific aggression in *Actinia equina*, 273-278
- Light-induced polarisation in germinating *Tilopteris* eggs, 555-562
- Mechanical excitation of lateral receptors, 289-306
- Osmoregulation in *Palaemon longirostris*, 261-272
- Possible colour discrimination by multibank retinae in deep-sea fish, 409-435
- Reproductive behaviour of copepod gill parasites of cod, 465-476
- Salinity and temperature effects on capelin eggs, 1-9
- Temperature effects on rearing of *Nephrops* larvae, 795-801
- Visual pigments in deep-sea fish, 43-51
- Zinc regulation in *Gammarus*, 249-260

Pollution and Toxicity

- Cadmium deposition in *Littorina*, 219-227
- Effect of tributyltin on Scottish dogwhelks, 335-354
- Histological lesions in bivalves possibly related to copper-mine discharge, 447-464
- Mercury accumulation in fish muscle, 437-445
- Possible minor role of toxins in fish mortality during *Gymnodinium* blooms, 501-509
- Zinc regulation in *Gammarus*, 249-260

Population Studies

- Corophium volutator* in the Ems estuary, 11-15
- Long-term phytoplankton changes in Plymouth sea area, 229-244
- Long-term trends in N. Atlantic *Phaeocystis* populations, 813-821
- Modelling of phytoplankton population dynamics, 625-646
- Mytilus edulis* on an exposed rocky shore, 335-365
- Oostomia eulimoides* on the south coast of Ireland, 65-80
- Reproductive cycle of an Isle of Man *Modiolus* population, 373-385
- Successive generations of parasitic copepods of farmed salmon, 279-287
- Ten-year survey of *Myticola intestinalis* in mussel beds, 823-836
- Tide pool brittle-star population, 27-41

Structure and Histology

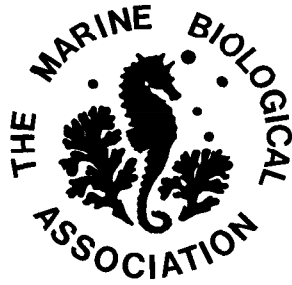
- Tegumental gland cells of *Palaemon serratus*, 53-63

Taxonomy and Life History

- Description of *Hyale grimaldii* with key to British *Hyale* spp., 913-918
- Key to European *Nephtys* spp., re-description of two species, 875-899
- A presumed male specimen of *Corophium bonnellii*, 319-321
- Speciation in *Hydractinia*, 857-874

Technique and Methodology

- Determination of shell organic content, 563-572
- Graphical estimation of demographic parameters, 367-371
- Narcotising sea anemones, 805-813



Environmental Change ~ Biological Response

A Meeting to be held at the

Polytechnic South West, Plymouth

2-4 April 1990

The meeting will consider the adaptive responses of biological systems in the sea to stress (induced for example by contaminants, anoxia, climatic change, osmotic stress). Sessions will be arranged to express the way in which biological systems respond and adapt at different levels of organisation. Each of these will be introduced by a keynote speaker. You are invited to submit short papers (20 minutes) and posters on the following topics. Time will be allowed in the programme for a poster session.

1. *Cellular/subcellular*. To include detoxification pathways, sequestration, repair mechanisms.
2. *Whole organisms*. Reproduction and breeding behaviour, accumulation and excretion of contaminants, acquisition of tolerance.
3. *Community*. Structure of communities, diversity, species succession, trophic levels.
4. *Long-term changes*. Interaction between biological communities and climatic changes with special emphasis on the use of long-term biological data sets.

Dr N J Shackleton of the Godwin Laboratory for Quaternary Research, Cambridge, will give the second **Leslie Cooper Memorial Lecture**.

For further details or to offer a contribution, please contact:

Dr M B Jones, Dept of Biological Sciences, Polytechnic South West, Drake Circus,
Plymouth, PL4 8AA

or:

Dr Linda Maddock, Marine Biological Association, The Laboratory, Citadel Hill,
Plymouth, PL1 2PB

Cover: The photograph on the outside of the cover was taken by David Nicholson at Pedney Beach, Cornwall.

Inside front cover: Scanning electron micrographs of dinoflagellates (photographs by Derek Harbour).

Upper: *Dinophysis acuminata* Claparède & Lachmann (length 58 µm).

Lower: *Ornithocercus magnificus* Stein (length 94 µm).

Inside back cover: Scanning electron micrographs of foraminifera (photographs by Derek Harbour).

Upper: *Globorotalia truncatulinoides* (d'Orbigny) (diameter 450 µm).

Lower: *Globigerina quinqueloba* Natlund (diameter 180 µm).

© *The Marine Biological Association of the United Kingdom* 1989

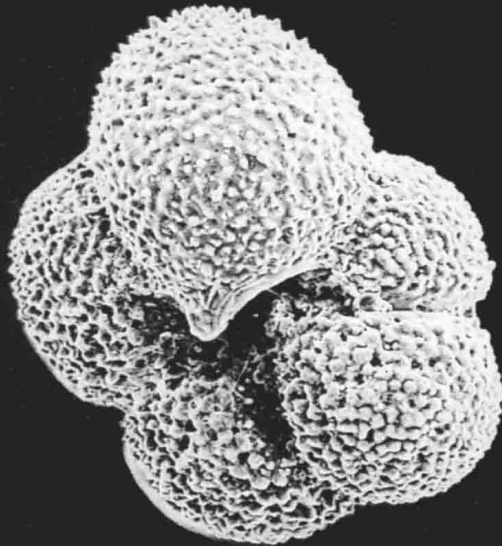
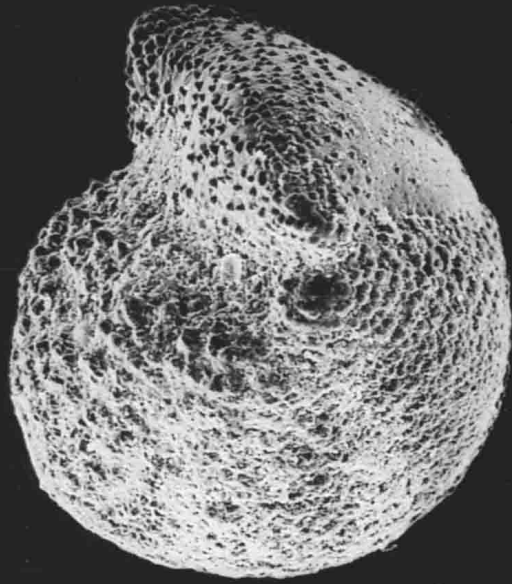
CAMBRIDGE UNIVERSITY PRESS

THE PITT BUILDING, TRUMPINGTON STREET, CAMBRIDGE CB2 1RP

40 WEST 20TH STREET, NEW YORK, NY 10011, USA

10 STAMFORD ROAD, OAKLEIGH, MELBOURNE 3166, AUSTRALIA

Printed in Great Britain by the University Press, Cambridge



JMBA

JOURNAL OF THE MARINE BIOLOGICAL ASSOCIATION
OF THE UNITED KINGDOM
VOLUME 69:4 NOVEMBER 1989

CONTENTS

	PAGE
The Leslie Cooper Memorial Lecture	745
Lovelock, J. E. The First Leslie Cooper Memorial Lecture: Gaia	746
Craik, J. C. A. The Gaia hypothesis – fact or fancy?	759
Clare, A. S. and Walker, G. Morphology of the nervous system of barnacles: the median ocellus of <i>Balanus hameri</i> (= <i>Chirona hameri</i>) (Crustacea: Cirripedia)	769
Larson, R. J., Mills, C. E. and Harbison, G. R. <i>In situ</i> foraging and feeding behaviour of narcomedusae (Cnidaria: Hydrozoa)	785
Thompson, B. M. and Ayers, R. A. Laboratory studies on the development of <i>Nephrops norvegicus</i> larvae	795
Moore, S. J. Narcotising sea anemones	803
Owens, N. J. P., Cook, D., Colebrook, M., Hunt, H. and Reid, P. C. Long term trends in the occurrence of <i>Phaeocystis</i> sp. in the north-east Atlantic	813
Davey, J. T. <i>Mytilicola intestinalis</i> (Copepoda: Cyclopoida): a ten year survey of infested mussels in a Cornish estuary, 1978–1988	823
Grahame, J. and Mill, P. J. Shell shape variation in <i>Littorina saxatilis</i> and <i>L. arcana</i> : a case of character displacement	837
Buss, L. W. and Yund, P. O. A sibling species group of <i>Hydractinia</i> in the north-eastern United States	857
Rainer, S. F. Redescription of <i>Nephtys assimilis</i> and <i>N. kersivalensis</i> (Polychaeta: Phyllodocida) and a key to <i>Nephtys</i> from northern Europe	875
Bradshaw, S. A., O'Hara, S. C. M., Corner, E. D. S. and Eglinton, G. Assimilation of dietary sterols and faecal contribution of lipids by the marine invertebrates <i>Neomysis integer</i> , <i>Scrobicularia plana</i> and <i>Nereis diversicolor</i>	891
McGrath, D. and Myers, A. A. The drift amphipod <i>Hyale grimaldii</i> in Irish and British waters	913
Announcement	919
Book Notices	921
Report of the Council 1988–89	923
Financial Statement 1988–89	969