

# High burden of co-morbidity and mortality among severely malnourished children admitted to outpatient therapeutic programme facilities in the conflict setting of Borno, Nigeria: a retrospective review

Dick Chamla<sup>1,\*</sup>, Olusola Oladeji<sup>2</sup>, Ifeanyi Maduanusi<sup>3</sup>, Sule Mele<sup>4</sup>, Helni Mshelia<sup>4</sup> and Naqibullah Safi<sup>5</sup>

<sup>1</sup>UNICEF, Health Section, Emergency Response Team, 3 UN Plaza, New York, NY 10017, USA: <sup>2</sup>UNICEF, Juba, South Sudan: <sup>3</sup>UNICEF, Borno, Nigeria: <sup>4</sup>State Primary Health Care Development Agency, Borno, Nigeria:

<sup>5</sup>UNICEF, New York, NY, USA

Submitted 18 April 2018: Final revision received 25 November 2018: Accepted 12 December 2018: First published online 11 February 2019

## Abstract

**Objective:** To present evidence on the burden and outcomes of co-morbidities among severely malnourished (SAM) children admitted to outpatient therapeutic programme (OTP) facilities in the conflict setting of Borno, Nigeria.

**Design:** Retrospective medical chart review.

**Setting:** Facility-based study.

**Participants:** Children aged 6–59 months with SAM enrolled in OTP between June and November 2016 whose medical records were analysed. Only pneumonia and diarrhoea were examined due to data limitations. Stata software was used for descriptive, multivariate and survival analyses.

**Results:** Records of 396 children with median age of 15 months were identified and analysed from the date of enrolment to exit from OTP. Mean length of stay in OTP was 61 d, with co-infected SAM children having shorter stay ( $P=0.006$ ). Of the total, 148 (37.4%) had at least one co-morbidity (pneumonia or diarrhoea), of which thirty-nine (26.4%) had both. Cumulative rate of mortality during follow-up time was 9.5 (95% CI 6.0, 15.1) per 10 000 child-days; SAM children with co-morbidities were ten times more likely to die than those without (hazard ratio = 10.2; 95% CI 3.4, 31.0). In multivariable analysis, co-morbidity ( $P=0.01$ ), oedema ( $P=0.003$ ), dehydration ( $P=0.02$ ) and weight on admission ( $P=0.01$ ) were associated with mortality. Both recovery and defaulter rates (57.8 and 36.1%, respectively) did not meet SPHERE standards.

**Conclusions:** Children with SAM and co-morbidities are less likely to survive, presenting a significant barrier in improving child survival. The findings call for integrated OTP models that incorporate clinical algorithms and ensure prompt referral for SAM children with co-morbidity.

## Keywords

Severe acute malnutrition  
Co-morbidity  
Humanitarian  
Mortality

Decades of Boko Haram insurgency has left Borno, one of the affected north-eastern states of Nigeria, with nutrition and health emergencies, with reported rates of severe acute malnutrition (SAM) exceeding emergency thresholds and a high burden of childhood diseases<sup>(1–4)</sup>. There are a multitude of factors that led to this precarious situation, including food insecurity due to drought and armed conflicts, resulting in cessation of farming activities as farm lands were deserted by the fleeing population and breakdown of health infrastructure due to population displacement directly attributed to the insurgency<sup>(1,3)</sup>.

High mortality rates and disease outbreaks such as measles have also been documented, particularly among internally displaced persons (IDP) in Borno, while most children continue to suffer from malaria, pneumonia and diarrhoea<sup>(5,6)</sup>. These conditions are the top causes of the under-five mortality rate, with half of the deaths having underlying malnutrition<sup>(7,8)</sup>.

Yet the occurrence and burden of these diseases among children with SAM and their related outcomes in conflict settings in Nigeria have not been systematically and routinely reported. There is a myriad of literature showing

\*Corresponding author: Email dchamla@unicef.org

rapid disease progression and high mortality among children, as well as adults, with malnutrition and co-morbidities<sup>(9,10)</sup>. These poor outcomes are likely to be worse in conflict settings due to precarious living conditions and limited availability of services<sup>(11,12)</sup>. In protracted emergencies such as Afghanistan and Somalia, childhood wasting was a leading cause of disability-adjusted life years, whereas the crises in Yemen, Libya and Syria have all resulted in a reduction of life expectancy<sup>(13)</sup>.

Addressing the co-morbidities among severely malnourished children is one of the pillars of child survival strategies and remains critical in reducing the under-five mortality rate below the emergency threshold<sup>(9,14,15)</sup>. However, in Borno State and some emergency programmes, nutrition and health services are managed separately by different agencies, leading to missed opportunities in providing comprehensive and integrated care to a sick child, who often presents with multiple conditions. The current paper presents evidence on the burden and outcomes of co-morbidities among severely malnourished children in a conflict setting with the aim of generating global discourse for joint health–nutrition programming as part of a minimum package of primary health-care services in humanitarian settings.

## Materials and methods

The present study was a facility-based, retrospective review of medical records of children diagnosed with SAM and enrolled between 1 June and 30 November 2016 in the outpatient therapeutic programme (OTP) facilities supported by UNICEF in the north-eastern state of Borno, Nigeria, that has been under Boko Haram insurgency in the past decade. The eligibility criteria were restricted to all children with medical records aged 6–59 months who enrolled in OTP facilities inside and outside IDP settlements during this period. The records of these children included data from the date of admission until the date of last exit from the OTP.

In OTP, standard community management of acute malnutrition (CMAM) protocols that are based on Nigerian national guidelines and aligned with SPHERE standards were implemented. In these protocols, SAM was screened using a colour-coded measuring tape around the mid-upper arm circumference (MUAC) during the OTP admission. A child with measurement of less than 115 mm, which corresponded to red colour in the MUAC tape, with or without medical complications, was classified as SAM. Assessment to determine swelling of the feet was also required to be done and those children with swelling in both feet were classified as having oedema, a sign of protein deficiency.

### *Co-morbidities among children with severe acute malnutrition*

In the present study, pneumonia and diarrhoea were the only co-infections analysed due to the availability and

reliability of data retrieved from the medical records. In many emergencies diarrhoea and pneumonia are most common and account for the greatest number of deaths<sup>(13,16)</sup>. Malaria, which was equally prevalent in the region<sup>(17,18)</sup>, was not analysed due to the limited reliability of data as antimalarial drugs were also prescribed routinely for most children irrespective of the diagnosis. Similarly, a rapid diagnostic test for malaria was used inconsistently, making it difficult to analyse and interpret results.

The algorithm of integrated management of childhood illness (IMCI) was used to classify pneumonia, diarrhoea and their related complications, or disease severity such as severe pneumonia or dehydration<sup>(19)</sup>. IMCI employs a three-step process that includes: (i) assessing a child for general danger signs, common conditions, and nutrition and immunization status; (ii) classifying a child's illnesses using a colour-coded triage system; and (iii) identifying specific treatments. Both pneumonia and diarrhoea were classified based on the IMCI booklet and using data from the medical records showing history of cough or difficult breathing and fast breathing, and passage of watery stool in a 24 h period with various degrees of dehydration, respectively.

### *Sampling and data sources*

A selection of facilities offering outpatient therapeutic treatment commenced with purposive selection of six local government areas, representing four geographical zones, based on IDP population density and malnutrition rate. This was followed by selection of two OTP facilities from each local government area. The list of IDP camps and OTP facilities was drawn from State and UNICEF health facility directories. The list of the local government areas, IDP camps and health facilities can be found in the online supplementary material, Supplemental Table 1. Lastly, all children in the selected facilities enrolled in the above-mentioned period were included in the sample.

The main data source was the national OTP card containing information on demographic profile, anthropometry, medical history, medication/treatment and follow-up. The outpatient department register was also used to complement the information collected from the OTP card in the case of data gaps. The information from these data sources was abstracted into structured questionnaires by a trained team of data collectors. All filled questionnaires were sent to Maiduguri field office where a data manager reviewed the data for consistency and quality and entered the information in the electronic database.

### *Outcome measures and data analysis*

The primary outcome measures were 'recovery', 'defaulter' from the OTP and 'mortality', comparing children with

SAM only and those with SAM and co-morbidity at baseline.

Standard CMAM definitions were used for 'recovery' as MUAC gained and maintained above 115 mm in two consecutive measurements; 'defaulter' was defined as absent from weekly OTP visits for three consecutive times, while 'transfer-out' indicated those with medical complications who were transferred from OTP to another facility for further treatment, usually in a stabilization centre. In Borno, these stabilization centres were managed by other humanitarian agencies or government. Secondary outcome measures included the burden of co-morbidities among children with SAM and the uptake of measles vaccination, antibiotics for pneumonia, and diagnostic tests for malaria and HIV.

Individual demographic and biological factors that, based on the literature, influence outcomes were selected and included for analysis<sup>(20)</sup>. These include age, sex, residence (IDP camp or non-camp), referral source to OTP, oedema, weight at admission and measles vaccination status. We also determined whether OTP admission before or after the declaration of a Level 3 (L3; severe) emergency by the UN would influence the outcomes due to the likely differences in the availability of services. Length of OTP stay/enrolment was calculated by subtracting the dates of OTP admission and OTP exit. We followed CMAM and SPHERE standards to determine thresholds such that mortality and defaulter rates below 10 and 15%, respectively, and recovery rate of 75% or above were considered acceptable, and 56 d for the average length of stay in OTP.

Kaplan–Meier survival analysis was used to estimate survival probabilities throughout the length of stay in OTP, comparing those classified as SAM and SAM with co-morbidities. Bivariate and multivariate Cox proportion hazard models established the relationship between individual factors and primary outcomes. Correlates of co-morbidities among SAM children at baseline were assessed using OR and 95% CI, while mean differences were determined as significant using the *t* test with statistical significance of  $\alpha < 0.05$ . All statistical analyses were performed using the statistical software package Stata version 14.2.

### **Ethical considerations**

This study was conducted according to the guidelines laid down in the Declaration of Helsinki and all procedures involving human subjects were approved by the State Health Research Committee of Borno, Nigeria. Further approval for data abstraction from OTP cards that are facility-held was obtained from the State Ministry of Health and the State Primary Health Care Development Agency. All personal identifiers were removed from the medical records.

### **Results**

A total of 396 children with median age of 15 months (interquartile range: 10–24 months), of whom 186 (47.0%) were under 12 months of age and 194 (48.9%) were female, were identified and followed up from the date of admission to their last exit from OTP. Most, 348 (87.9%), resided in IDP camps. The mean length of stay in OTP, which is the time from admission to exit from OTP, was 61 (SD 38.3) d. The co-infected SAM children had shorter mean length of stay in OTP than their counterparts (mean difference = 11 d; 95% CI 2.5, 19.6 d;  $P = 0.006$ ).

The median weight and MUAC on admission were 6.5 kg (interquartile range: 5.2–8.0 kg) and 111 mm (interquartile range: 106–115 mm), respectively. Children with SAM and co-morbidities were more likely to have lower weight (mean difference = 1100 g; 95% CI 598, 1600 g;  $P < 0.001$ ) and smaller MUAC (mean difference = 5.2 mm; 95% CI 2.6, 7.9 mm;  $P < 0.001$ ).

Of 388 records with data, eighteen (4.6%) children presented with bipedal oedema at baseline. Similarly, of 109 with documented information, forty-five (41.3%) had received measles vaccination.

### **Co-morbidities**

Of the total, 148 (37.4%) had at least one co-morbidity, pneumonia or diarrhoea, of which thirty-nine (26.4%) had both. Out of sixty-seven pneumonia cases, forty-four (65.8%) were classified as severe pneumonia using the IMCI classification. Similarly, approximately 26.3% (104/396) of the study population was found to have dehydration. Data also showed that less than 1% of the study population received a rapid diagnostic test for malaria, cotrimoxazole prophylaxis or an HIV test. In contrast, 90.9% were given antibiotics (mostly amoxicillin) and 83.6% were given antimalarial drugs.

In the multivariable regression model (Table 1), children with SAM and co-morbidities were more likely to present with oedema (OR = 6.60; 95% CI 2.29, 9.70) and to have enrolled in OTP before the L3 declaration (OR = 2.78; 95% CI 1.57, 4.92), but were less likely to reside in IDP camps (OR = 0.02; 95% CI 0.01, 0.09). However, age, sex and measles vaccination status were not statistically associated with co-morbidities.

### **Outcomes**

The overall outcomes and differences in recovery, defaulter and mortality rates between SAM children with or without co-morbidities are presented in Table 2. Both recovery and defaulter rates did not meet CMAM and SPHERE emergency standards (57.8 and 36.1% *v.* <10 and <15%, respectively). Similarly, 1% of the study population was 'transferred out' to other facilities for further treatment as per national guidelines. Only mortality was significantly

**Table 1** Demographic and biological correlates of co-morbidities among children aged 6–59 months with severe acute malnutrition (SAM) who were admitted to outpatient therapeutic programme (OTP) facilities in the conflict setting of Borno, Nigeria, June–November 2016

	Total <i>n</i>	SAM only		SAM with co-morbidity		OR	95% CI	<i>P</i> value	aOR	95% CI	<i>P</i> value
		<i>n</i>	%	<i>n</i>	%						
Age at OTP enrolment ( <i>n</i> 381)											
6–< 12 months	179	129	46.7	50	47.6		Ref.				
12–<60 months	202	147	53.3	55	52.4	0.97	0.66, 1.51	0.88			
Sex ( <i>n</i> 392)											
Male	185	140	49.3	45	41.7	0.73	0.47, 1.15	0.18			
Female	207	144	50.7	63	58.3		Ref.				
Residence ( <i>n</i> 395)											
IDP camp	348	265	92.7	83	76.1	0.25	0.14, 0.47	<0.001	0.02	0.01, 0.09	<0.001
Host population/non-camped	47	21	7.3	26	23.9		Ref.				
OTP enrolment period ( <i>n</i> 395)											
Pre-L3 declaration	236	162	56.4	74	68.5	1.68	1.05, 2.68	0.03	2.78	1.57, 4.92	<0.001
Post-L3 declaration	159	125	43.7	34	31.5		Ref.				
Measles vaccination status ( <i>n</i> 109)											
Given measles vaccine = yes	45	34	46.6	11	30.6	0.50	0.22, 1.18	0.11			
Assessed for oedema ( <i>n</i> 388)											
Had oedema = yes	18	6	2.1	12	11.4	5.96	2.17, 8.32	<0.001	6.6	2.29, 9.70	<0.001

aOR, adjusted OR; IDP, internally displaced persons; L3, Level 3 (severe) emergency; ref., reference category.

higher among SAM children with co-morbidities (OR = 9.7; 95% CI 3.4, 29.6,  $P < 0.001$ ).

The cumulative rate of mortality during follow-up time was 9.5 (95% CI 6.0, 15.1) per 10 000 child-days and that of defaulters was 6.7 (95% CI 5.6, 8.0) per 1000 child-days. Following survival analysis and Cox proportional hazards modelling, children with SAM and co-morbidities were found to be less likely to survive ( $P < 0.001$ ), as shown in Fig. 1, and were ten times more likely to die compared with those without co-morbidities (hazard ratio (HR) = 10.2; 95% CI 3.4, 31.0). There was no significant difference in survival probability among SAM defaulters with or without co-morbidities (HR = 0.99; 95% CI 0.65, 1.53), as shown in Fig. 2.

In multivariate Cox regression, those who died were likely to have a co-morbidity (adjusted HR (aHR) = 4.2; 95% CI 1.3, 13.2), oedema (aHR = 7.2; 95% CI 2.0, 25.8), dehydration (aHR = 4.0; 95% CI 1.3, 12.7) and lower weight on admission (aHR = 0.6; 95% CI 0.4, 0.9).

## Discussion

The present study shows high burden of co-morbidities and associated mortality among severely malnourished children in conflict-affected northern Nigeria, conforming with the existing literature from other countries<sup>(6,12,15,21)</sup>. There are several mechanisms and factors that increase the risk of co-morbidities such as pneumonia and diarrhoea in malnourished children, which have been published<sup>(22–26)</sup>. Being underweight, which was also found in our analysis, is one of the risk factors. Other factors include deficiencies of micronutrients such as vitamin D and Zn<sup>(27–29)</sup> that are common in severely malnourished children.

The findings of the present study further suggest that children with SAM and co-morbidity were more likely to

be enrolled before the L3 declaration, which was likely due to high unmet needs among the affected population, while many humanitarian actors began to develop their capacities to address the multiple health and nutrition needs during that period. After the L3 activation was done by the UN, relevant capacities across the international humanitarian system, such as improved food distribution, were scaled up to address the increasing needs caused by a multitude of factors including re-emergence of wild polio virus and widespread famine<sup>(1,30)</sup>.

The burden of co-morbidity found in the present study could be higher if malaria was able to be included in the analysis, due to its high prevalence in Nigeria and other African countries<sup>(18,31–33)</sup>. Other diseases such as tuberculosis are also common among children with severe malnutrition<sup>(34,35)</sup> but there was limited documentation on the OTP cards. The limited documentation on the OTP card was linked to the absence of tuberculosis testing in the OTP; however, such testing was available in the stabilization centres for treatment of SAM children with medical complications in Borno, which were supported by other humanitarian actors. In other studies, isolates of *Mycobacterium tuberculosis* were identified in more than 21% of children with SAM<sup>(35)</sup>, underscoring the need for inclusion of tuberculosis screening among high-risk children. Similarly, the finding of suboptimal uptake of HIV testing was a missed opportunity to improve care, as malnutrition, pneumonia and diarrhoea are all common among HIV-infected children<sup>(35–37)</sup>. Nigeria accounts for almost 30% of the global burden of paediatric HIV, mainly because of its low coverage of prevention of mother-to-child transmission services including in Borno State<sup>(38,39)</sup>.

Unknown HIV status among these children could partly explain low usage of cotrimoxazole, unlike other studies in Nigeria that showed high uptake of cotrimoxazole prophylaxis in antiretroviral therapy and tuberculosis

**Table 2** Outcomes of the outpatient therapeutic programme (OTP), according to presence of co-morbidities, among children aged 6–59 months with severe acute malnutrition (SAM) who were admitted to OTP facilities in the conflict setting of Borno, Nigeria, June–November 2016

Outcome	Overall		SAM only		SAM with co-morbidity		OR	95% CI	P value
	%	95% CI	%	95% CI	%	95% CI			
Recovery	57.8	49.3, 66.9	58.9	48.9, 68.8	55.0	40.2, 72.9	1.04	0.55, 1.97	0.96
Defaulter	36.1	31.5, 40.9	38.3	32.8, 44.1	30.3	22.3, 39.6	0.9	0.51, 1.81	0.93
Mortality	5.1	3.2, 7.7	1.7	0.7, 4.1	13.8	8.4, 21.6	9.7	3.4, 29.6	<0.001*
Transfer-out	1.0	0.4, 2.7	1.1	0.3, 3.2	0.9	0.1, 6.3	1.27	0.75, 2.16	0.53

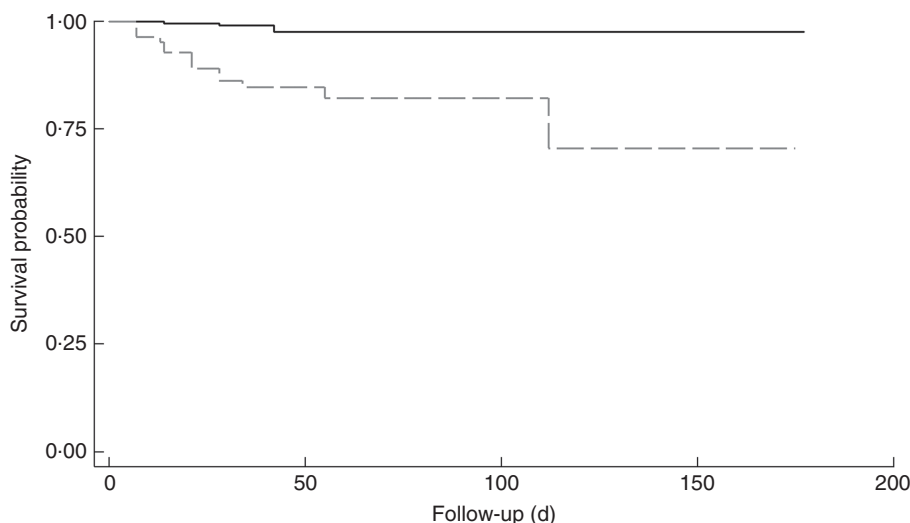
\*Statistically significant.

programmes<sup>(40,41)</sup>. Studies have shown that malnutrition impairs child immunity<sup>(25)</sup> but whether this is associated with the occurrence of opportunistic infections such as atypical pneumonias requiring cotrimoxazole prophylaxis has not been well documented and is beyond the scope of the current study.

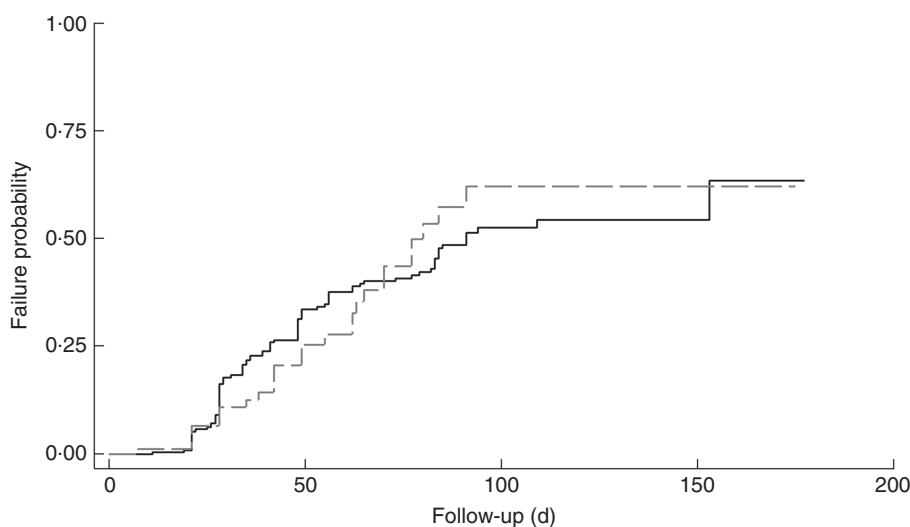
Higher mortality among co-infected children with SAM is consistent with many studies, and in countries such as Bangladesh, increased mortalities were reported among co-infected children after inpatient discharge<sup>(42)</sup>. Our study also shows a higher average stay in OTP with those co-infected children having shorter stays, most likely due to higher mortality observed among this group. Additionally, the recovery rate was low and the defaulter rate was much higher than emergency thresholds, which is consistent with other studies in similar settings<sup>(12,21)</sup> and is most likely due to limited follow-up mechanisms. A strong follow-up system could also have tracked the outcomes of defaulters that were not included and determined in the current study. Despite high rate of co-morbidities, only 1% of study children were transferred out to other facilities that might likely be stabilization centres for complicated cases. Limited quality of OTP services, including limited capacity of staff, and inadequate referral or follow-up mechanisms, could partly explain why some SAM children with severe diseases were not promptly referred to stabilization centres. The limited quality of services was more likely observed before the L3 declaration when the capacity of most humanitarian agencies was still limited. This calls for further study on the quality and effectiveness of the outpatient nutrition programme in Borno that could also explain the low and high rates of recovery and defaulter, respectively.

Although the evidence of high mortality among SAM children with co-morbidity is certain, it needs to be translated into better programme designs and requires consistent implementation of current Nigerian CMAM guidelines that are linked with IMCI for case detection, treatment in OTP and prompt referral of SAM cases with any complication to the stabilization centres. This convergence of health–nutrition programming might be life-saving as co-morbidity and other factors such as dehydration have been depicted herein to be strong predictors of mortality, which is similar to the findings of other studies<sup>(20,43)</sup>. The impact of IMCI in improving health outcomes has also been amply documented<sup>(19,44,45)</sup>.

The results of the present study have major programmatic implications and underscore the need for strengthening or inclusion of clinical algorithms such as IMCI during the assessment of malnutrition as part of a minimum package of services, especially in conflict settings where there is often a significant breakdown of health and nutrition infrastructure. Such programmatic shifts, however, require policy dialogue, appropriate normative tools and trained personnel for successful implementation. In Nigeria, the CMAM protocol was integrated as part of IMCI



**Fig. 1** Kaplan–Meier survival estimates for children aged 6–59 months with severe acute malnutrition (SAM) who were admitted to outpatient therapeutic programme facilities in the conflict setting of Borno, Nigeria, June–November 2016: —, cases of SAM only (*n* 248); ---, cases of SAM with least one co-morbidity (*n* 148)



**Fig. 2** Kaplan–Meier failure estimates for children aged 6–59 months with severe acute malnutrition (SAM) who were admitted to outpatient therapeutic programme facilities in the conflict setting of Borno, Nigeria, June–November 2016, and defaulted: —, cases of SAM only (*n* 248); ---, cases of SAM with least one co-morbidity (*n* 148)

but its implementation was limited and varied across IDP camps. Strong government leadership remains critical in advancing the integrated delivery while ensuring effective coordination and alignment of a large number of humanitarian actors in north-eastern Nigeria, to ensure that standard guidelines are followed and to guarantee efficiency gains and improving child survival.

The present study findings are limited by several factors that include data gaps due to incomplete medical records and lack of randomization that could ensure wide and diverse representation of the facilities. However, efforts were made to address data gaps by using alternative data sources such as outpatient department registers. Limited diagnostic capacity and application of IMCI algorithms as part of OTP might likely have resulted in underestimation

of the burden of co-morbidities. Despite these limitations, the findings of the present study are consistent with other literature of poor outcomes of children with SAM and co-morbidities.

**Conclusion**

In conclusion, high morbidity and mortality among malnourished children presents a major challenge in reaching the ambitious goal of ‘survive and thrive’ set forth by the global health strategy (Every Woman Every Child Every Adolescent) in complex emergencies. As the countdown to 2030 for child survival progresses, extra efforts will be needed to achieve its targets for children in humanitarian

settings. The present study underscores the inextricable link between health and nutrition and calls for programmatic shifts that include OTP models which incorporate simplified clinical algorithms and diagnostic tools based on the epidemiological situation. At an upstream level, it underlines the need for a strategic discourse on the convergence between public health and nutrition that could be important in addressing the vulnerabilities and risks of co-morbidities and malnutrition.

## Acknowledgements

*Acknowledgements:* The authors thank all staff of the OTP facilities, health teams and all members of the assessment team who collected data and assisted in data analysis in the five selected states; in particular, Ladi Ejike (state nutrition officer), Victor Adeniyi (data officer) and Dr Austin Tino (health specialist, UNICEF Borno). *Financial support:* This research received no specific grant from any funding agency in the public, commercial or not-for-profit sectors for this research. *Conflict of interest:* Authors declare no conflict of interest. *Authorship:* The protocol and design of the study including data collection tools were drafted by D.C. and reviewed by O.O., N.S. and I.M. The data collection was coordinated by O.O., I.M., S.M. and H.M. The data analysis was conceived and conducted by D.C. and reviewed by O.O., N.S. and I.M. Similarly, D.C. wrote the first draft of the paper which was reviewed by O.O., N.S., I.M., S.M. and H.M. *Ethics of human subject participation:* This study was conducted according to the guidelines laid down in the Declaration of Helsinki and all procedures involving human subjects were approved by the State Health Research Committee of Borno, Nigeria. All personal identifiers were removed from medical records.

## Supplementary material

To view supplementary material for this article, please visit <https://doi.org/10.1017/S1368980018003968>

## References

1. Vahyala TA, Minnessi GK & Kabiru U (2016) The effects of Boko Haram insurgency on food security status of some selected local government areas in Adamawa State, Nigeria. *Sky J Food Sc* **5**, 12–18.
2. Omole O, Welye H & Abimbola S (2015) Boko Haram insurgency: implications for public health. *Lancet* **385**, 941.
3. Loewenberg S (2017) Famine fears in northeast Nigeria as Boko Haram fight rages. *Lancet* **389**, 352.
4. Dunn G (2018) The impact of the Boko Haram insurgency in Northeast Nigeria on childhood wasting: a double-difference study. *Confl Health* **12**, 6.
5. Awosusi AE (2017) Aftermath of Boko Haram violence in the Lake Chad Basin: a neglected global health threat. *BMJ Glob Health* **2**, e000193.

6. Leidman E, Tromble E, Yermina A *et al.* (2017) Acute malnutrition among children, mortality, and humanitarian interventions in conflict-affected regions – Nigeria, October 2016–March 2017. *MMWR Morb Mortal Wkly Rep* **66**, 1332–1335.
7. Walker CL, Rudan I, Liu L *et al.* (2013) Global burden of childhood pneumonia and diarrhoea. *Lancet* **381**, 1405–1416.
8. Black RE, Morris SS & Bryce J (2003) Where and why are 10 million children dying every year? *Lancet* **361**, 2226–2234.
9. Fergusson P, Tomkins A & Kerac M (2009) Improving survival of children with severe acute malnutrition in HIV-prevalent settings. *Int Health* **1**, 10–16.
10. Ahmed N, Choe Y, Mustad VA *et al.* (2018) Impact of malnutrition on survival and healthcare utilization in Medicare beneficiaries with diabetes: a retrospective cohort analysis. *BMJ Open Diabetes Res Care* **6**, e000471.
11. Qirbi N & Ismail SA (2017) Health system functionality in a low-income country in the midst of conflict: the case of Yemen. *Health Policy Plan* **32**, 911–922.
12. Polonsky JA, Ronsse A, Ciglenecki I *et al.* (2013) High levels of mortality, malnutrition, and measles, among recently-displaced Somali refugees in Dadaab camp, Dadaab refugee camp complex, Kenya, 2011. *Confl Health* **7**, 1.
13. Mokdad AH, Forouzanfar MH, Daoud F *et al.* (2016) Health in times of uncertainty in the eastern Mediterranean region, 1990–2013: a systematic analysis for the Global Burden of Disease Study 2013. *Lancet Glob Health* **4**, e704–e713.
14. Chamla DD, Essajee S, Young M *et al.* (2015) Integration of HIV in child survival platforms: a novel programmatic pathway towards the 90-90-90 targets. *J Int AIDS Soc* **18**, 20250.
15. Bahwere P (2014) Severe acute malnutrition during emergencies: burden management, and gaps. *Food Nutr Bull* **35**, 2 Suppl., S47–S51.
16. Countdown to 2030 Collaboration (2018) Countdown to 2030: tracking progress towards universal coverage for reproductive, maternal, newborn, and child health. *Lancet* **391**, 1538–1548.
17. Odugbemi B, Ezeudu C, Ekanem A *et al.* (2018) Private sector malaria RDT initiative in Nigeria: lessons from an end-of-project stakeholder engagement meeting. *Malar J* **17**, 70.
18. Do M, Babalola S, Awantang G *et al.* (2018) Associations between malaria-related ideational factors and care-seeking behavior for fever among children under five in Mali, Nigeria, and Madagascar. *PLoS One* **13**, e0191079.
19. Horwood C, Vermaak K, Rollins N *et al.* (2009) An evaluation of the quality of IMCI assessments among IMCI trained health workers in South Africa. *PLoS One* **4**, e5937.
20. Lapidus N, Minetti A, Djibo A *et al.* (2009) Mortality risk among children admitted in a large-scale nutritional program in Niger, 2006. *PLoS One* **4**, e4313.
21. Cuneo CN, Dansereau E, Habib AR *et al.* (2017) Treating childhood malnutrition in rural Haiti: program outcomes and obstacles. *Ann Glob Health* **83**, 300–310.
22. Zabihullah R, Dhoubhadel BG, Rauf FA *et al.* (2017) Risk for death among children with pneumonia, Afghanistan. *Emerg Infect Dis* **23**, 1404–1408.
23. Chisti MJ, Salam MA, Sharifuzzaman *et al.* (2009) Occult pneumonia: an unusual but perilous entity presenting with severe malnutrition and dehydrating diarrhoea. *J Health Popul Nutr* **27**, 808–812.
24. Chisti MJ, Salam MA, Ashraf H *et al.* (2013) Clinical risk factors of death from pneumonia in children with severe acute malnutrition in an urban critical care ward of Bangladesh. *PLoS One* **8**, e73728.
25. Ibrahim MK, Zambruni M, Melby CL *et al.* (2017) Impact of childhood malnutrition on host defense and infection. *Clin Microbiol Rev* **30**, 919–971.
26. Iannotti LL, Trehan I, Clitheroe KL *et al.* (2015) Diagnosis and treatment of severely malnourished children with diarrhoea. *J Paediatr Child Health* **51**, 387–395.

27. Chowdhury R, Taneja S, Bhandari N *et al.* (2017) Vitamin-D deficiency predicts infections in young north Indian children: a secondary data analysis. *PLoS One* **12**, e0170509.
28. Yakoob MY, Salam RA, Khan FR *et al.* (2016) Vitamin D supplementation for preventing infections in children under five years of age. *Cochrane Database Syst Rev* **11**, CD008824.
29. Chowdhury B, Hoque MA, Hossain MA *et al.* (2016) Serum zinc, copper, magnesium & phosphorus level in children with severe acute malnutrition (SAM). *Mymensingh Med J* **25**, 635–640.
30. Roberts L (2016) Infectious disease. New polio cases in Nigeria spur massive response. *Science* **353**, 738.
31. Rogerson SJ, Desai M, Mayor A *et al.* (2018) Burden, pathology, and costs of malaria in pregnancy: new developments for an old problem. *Lancet Infect Dis* **18**, e107–e118.
32. Odikamnoro OO, Ikeh IM, Okoh FN *et al.* (2018) Incidence of malaria/typhoid co-infection among adult population in Unwana Community, Afikpo North Local Government Area, Ebonyi State, Southeastern Nigeria. *Afr J Infect Dis* **12**, 33–38.
33. Challe DP, Kamugisha ML, Mmbando BP *et al.* (2018) Pattern of all-causes and cause-specific mortality in an area with progressively declining malaria burden in Korogwe district, north-eastern Tanzania. *Malar J* **17**, 97.
34. Chisti MJ, Graham SM, Duke T *et al.* (2014) A prospective study of the prevalence of tuberculosis and bacteraemia in Bangladeshi children with severe malnutrition and pneumonia including an evaluation of Xpert MTB/RIF assay. *PLoS One* **9**, e93776.
35. Chisti MJ, Ahmed T, Pietroni MA *et al.* (2013) Pulmonary tuberculosis in severely-malnourished or HIV-infected children with pneumonia: a review. *J Health Popul Nutr* **31**, 308–313.
36. Graham SM & Harries AD (1999) Childhood TB/HIV co-infection: correction, confusion and compliance. *Int J Tuberc Lung Dis* **3**, 1144.
37. Fergusson P, Chinkhumba J, Grijalva-Eternod C *et al.* (2009) Nutritional recovery in HIV-infected and HIV-uninfected children with severe acute malnutrition. *Arch Dis Child* **94**, 512–516.
38. Joint United Nations Programme on HIV/AIDS (2014) *The Gap Report*. Geneva: UNAIDS.
39. Joint United Nations Programme on HIV/AIDS (2014) *2014 Progress Report on the Global Plan Towards the Elimination of New HIV Infections Among Children by 2015 and Keeping Their Mothers Alive*. Geneva: UNAIDS.
40. Ojikutu B, Higgins-Biddle M, Greeson D *et al.* (2014) The association between quality of HIV care, loss to follow-up and mortality in pediatric and adolescent patients receiving antiretroviral therapy in Nigeria. *PLoS One* **9**, e100039.
41. Chamla DD, Asadu C, Davies A *et al.* (2015) Patching the gaps towards the 90-90-90 targets: outcomes of Nigerian children receiving antiretroviral treatment who are co-infected with tuberculosis. *J Int AIDS Soc* **18**, 20251.
42. Chisti MJ, Graham SM, Duke T *et al.* (2014) Post-discharge mortality in children with severe malnutrition and pneumonia in Bangladesh. *PLoS One* **9**, e107663.
43. Tadesse E, Worku A, Berhane Y *et al.* (2017) An integrated community-based outpatient therapeutic feeding programme for severe acute malnutrition in rural Southern Ethiopia: recovery, fatality, and nutritional status after discharge. *Matern Child Nutr* **14**, e12519.
44. Chopra M, Patel S, Cloete K *et al.* (2005) Effect of an IMCI intervention on quality of care across four districts in Cape Town, South Africa. *Arch Dis Child* **90**, 397–401.
45. Masanja H, Schellenberg JA, de Savigny D *et al.* (2005) Impact of integrated management of childhood illness on inequalities in child health in rural Tanzania. *Health Policy Plan* **20**, Suppl. 1, i77–i84.