

Non-ideal oblique shock waves

Davide Vimercati¹, Giulio Gori¹ and Alberto Guardone^{1,†}

¹Department of Aerospace Science and Technology, Politecnico di Milano, Via La Masa 34, 20156 Milano, Italy

(Received 11 April 2017; revised 26 March 2018; accepted 13 April 2018;
first published online 21 May 2018)

From the analysis of the isentropic limit of weak compression shock waves, oblique shock waves in which the post-shock Mach number is larger than the pre-shock Mach number, named non-ideal oblique shocks, are admissible in substances characterized by moderate molecular complexity and in the close proximity to the liquid–vapour saturation curve. Non-ideal oblique shocks of finite amplitude are systematically analysed, clarifying the roles of the pre-shock thermodynamic state and Mach number. The necessary conditions for the occurrence of non-ideal oblique shocks of finite amplitude are singled out. In the parameter space of pre-shock thermodynamic states and Mach number, a new domain is defined which embeds the pre-shock states for which the Mach number increase can possibly take place. The present findings are confirmed by state-of-the-art thermodynamic models applied to selected commercially available fluids, including siloxanes and hydrocarbons currently used as working fluids in renewable energy systems.

Key words: gas dynamics, shock waves

1. Introduction

The design of aerodynamic devices and systems often requires special care to account for shock wave formation and related losses. Complex patterns of oblique shock waves can indeed be found in diverse applications including, just to mention a few, engine intakes of high-speed aircrafts and rockets, supersonic nozzle outflows, under-expanded jets and highly loaded turbomachinery stages. The variation of the thermodynamic and kinematic quantities across the shock wave is determined by the Mach number of the flow ahead of the shock, relative to the shock front itself, in dilute-gas flows to which the theory of perfect gases can be reasonably applied. If instead the thermodynamic states of the fluid cannot be accurately described by means of the perfect-gas model, a more or less noticeable dependence on the pre-shock thermodynamic state, say the values of the pre-shock temperature and pressure, is also observed. Most of the features of shock waves and, more in general, the nonlinear dynamics of compressible fluids, depends on the evolution of the speed

† Email address for correspondence: alberto.guardone@polimi.it

of sound $c = \sqrt{(\partial P / \partial \rho)_s}$ along isentropic transformations, where P , ρ and s denote the fluid pressure, density and entropy, respectively. Following common practice, the sound-speed isentropic variation is expressed in non-dimensional form by the parameter Γ ,

$$\Gamma \equiv 1 + \frac{\rho}{c} \left(\frac{\partial c}{\partial \rho} \right)_s, \quad (1.1)$$

referred to as the fundamental derivative of gas dynamics (Thompson 1971). For perfect gases, $\Gamma = (\gamma + 1)/2 > 1$, where $\gamma > 1$ is the ratio of the specific heats. Therefore, in a dilute gas, the speed of sound increases upon isentropic compression. However, near to the liquid–vapour phase transition and critical point, the interaction between attractive and repulsive intermolecular forces can possibly result in a decrease in the speed of sound across isentropic compressive processes, see Colonna & Guardone (2006) and Harinck, Guardone & Colonna (2009). This is expected to occur in fluids with large heat capacities, corresponding to a sufficient level of molecular complexity (Lambrakis & Thompson 1972; Thompson & Lambrakis 1973). The gas dynamics associated with thermodynamic states featuring $\Gamma < 1$ may significantly differ from its ideal-gas counterpart, thus justifying the use of expressions such as non-ideal effects in reference to the related peculiarities. These include, e.g. the decrease of the flow Mach number along supersonic expansions in fluids exhibiting $0 < \Gamma < 1$ (Cramer & Best 1991) and so-called non-classical phenomena that are caused by negative nonlinearities ($\Gamma < 0$) or mixed nonlinearities (Γ changing its sign), the most striking example being the admissibility of expansion shocks and composite waves. The reader is referred to Cramer & Kluwick (1984), Menikoff & Plohr (1989) and Kluwick (2001) for reviews on non-classical gas dynamics. It must be noticed, however, that experimental evidence of negative nonlinearities is still missing at present, thus leaving the existence of non-classical phenomena an open question in fluid mechanics. In this respect, recent advancements indicate the possibility of observing negative nonlinearities in common substances (other than Bethe–Zel’dovich–Thompson (BZT) fluids) due to critical-point anomalies (see Nannan, Guardone & Colonna 2014; Nannan *et al.* 2016).

On the other hand, well-established and accurate thermodynamic models predict that several fluids currently employed in industrial processes feature $0 < \Gamma < 1$ in the single-phase vapour region, prominent examples being hydrocarbons, fluorocarbons and siloxanes used as working fluids in organic Rankine cycle (ORC) power systems. Related phenomena of practical interest include the aforementioned decrease of the flow Mach number in supersonic expansions (Cramer & Best 1991), the non-ideal evolution of the Mach number in diabatic supersonic nozzle flows (Schnerr & Leidner 1991) and the increase of the flow Mach number across oblique shock waves (Gori, Vimercati & Guardone 2017), which is the focus of the present investigation. This peculiar kind of oblique shock waves, namely those characterized by a larger flow Mach number in the post-shock state than in the pre-shock state, will be referred to as non-ideal oblique shock waves. Following the analysis of isentropic compressions by Cramer & Best (1991), it is straightforward to demonstrate that in the limit of shock wave of vanishing intensity, the Mach number can possibly increase across a compressions wave if $\Gamma < 1$. The goal of the present paper is to investigate classical compression shock waves of finite amplitude to complement the previous study of Gori *et al.* (2017), where non-ideal oblique shock waves are studied using the simple van der Waals model. In particular, the precise conditions allowing for non-ideal oblique shocks to occur in single-phase vapour flows of fluids exhibiting positive

nonlinearity are examined here. A convenient procedure is detailed which allows to determine the existence domain, in terms of pre-shock state properties, of non-ideal oblique shock waves. The non-ideal increase of the flow Mach number across oblique shocks is arguably relevant in applications where oblique shock waves are either intentionally formed (e.g. engine intake ramps) or a by-product of the supersonic flow expansion (e.g. fish-tail shocks in turbine nozzle vanes, over/under-expanded jet from a nozzle exit).

The present work is organized as follows. In § 2, the basics of shock waves are reviewed and the properties of shock curves in classical gas dynamics are discussed. The theoretical framework for the investigation of non-ideal oblique shocks is outlined. Section 3 describes the computation of the existence domain, in terms of pre-shock thermodynamic quantities and Mach number, leading to non-ideal oblique shocks. Results are presented for different substances of practical interest. Section 4 provides the concluding remarks.

2. Oblique shocks in the non-ideal gas dynamic regime

The present section recalls the theory of oblique shock wave starting from the integral relation between the states across the shock and the admissibility conditions. The properties of shock curves are analysed within the classical gas dynamic context ($\Gamma > 0$), providing the theoretical justification for the occurrence of non-ideal oblique shocks.

2.1. Jump relations and shock admissibility

We assume the shock wave to be a vanishing-thickness layer separating two regions of thermodynamic-equilibrium states within a non-reacting substance (see, e.g. Zel'dovich 1946; Landau & Lifshitz 1987). In a shock-attached reference frame, the laws of conservation of mass, momentum and energy across the shock front, namely the well-known Rankine–Hugoniot relations for three-dimensional flows, locally assume the form

$$[\rho u_n] = 0, \quad (2.1a)$$

$$[P\mathbf{n} + \rho u_n \mathbf{u}] = 0, \quad (2.1b)$$

$$[h + \|\mathbf{u}\|^2/2] = 0, \quad (2.1c)$$

where $[\cdot] = (\cdot)_B - (\cdot)_A$ denotes the jump from the pre-shock state A to the post-shock state B, see figure 1, h is the fluid enthalpy, \mathbf{n} is the unit vector normal to the shock front and \mathbf{u} is the fluid velocity, with $u_n = \mathbf{u} \cdot \mathbf{n}$ its normal component (we assume that the shock-attached coordinate system is such that $u_n > 0$). By projecting (2.1b) onto the normal direction and tangent plane, one obtains

$$[P + \rho u_n^2] = 0, \quad (2.2a)$$

$$[\mathbf{u}_t] = 0, \quad (2.2b)$$

where $\mathbf{u}_t = \mathbf{u} - u_n \mathbf{n}$ denotes the tangential velocity. The above relations imply that the oblique-shock problem reduces to studying the properties of normal shocks to which a parallel velocity field is superposed. After straightforward manipulations, the energy and normal momentum balance equations are recast in the well-known form

$$[h] - \frac{1}{2}[P](v_A + v_B) = 0, \quad (2.3a)$$

$$[P] + m^2[v] = 0, \quad (2.3b)$$

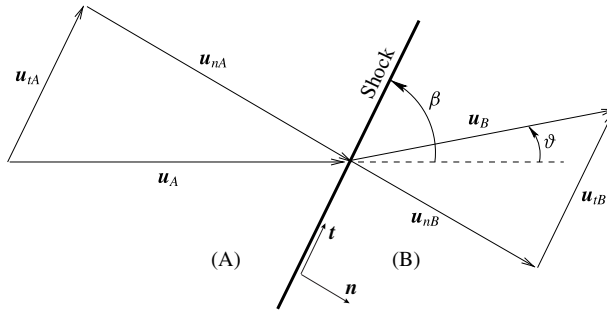


FIGURE 1. Qualitative illustration of the local shock front. States A and B represent the pre-shock and post-shock states, respectively. For ease of representation, the shock-attached reference frame is such that the plane spanned by unit vectors \mathbf{n} and \mathbf{t} (normal and tangent to the shock front, respectively) contains the fluid velocity \mathbf{u} . The angles β and θ are the shock angle and flow deviation angle, respectively, both computed with respect to the pre-shock flow direction.

respectively, where v is the specific volume and m ,

$$m = \rho_A u_{nA} = \rho_B u_{nB} \tag{2.4}$$

is the mass flux across the discontinuity. Equation (2.3a), known as the Hugoniot relation, determines the set, termed the Hugoniot locus, of thermodynamic states that can be connected by means of a shock wave. In the P - v plane, the Hugoniot locus is commonly referred to as the shock adiabat, and the straight line defined by relation (2.3b) as the Rayleigh line.

The Rankine–Hugoniot relations are not sufficient to isolate physically realizable shock solutions. These are selected by enforcing extra conditions accounting for physical effects that are not modelled in the simplified governing equations (viz. the limit of vanishing viscosity and heat conduction). Because the second law of thermodynamics requires that entropy does not decrease, (2.1) must be extended to include

$$[s] \geq 0. \tag{2.5}$$

Further admissibility conditions stem from mechanical stability requirements. In order that the shock front be stable against one-dimensional perturbations of the normal flow, the well-known speed-ordering relation

$$M_{nB} \leq 1 \leq M_{nA}, \tag{2.6}$$

must be satisfied along the shock front, where $M_n = u_n/c$ denotes the normal Mach number (Lax 1957). The conditions for stability with respect to multidimensional perturbations can be conveniently related to geometric properties of the shock adiabat and Rayleigh line, namely as bounds on their relative slope R ,

$$R = m^2 \left/ \frac{d}{dv} P^{\mathcal{H}}(v; P_A, v_A) \right|_B, \tag{2.7}$$

with $P^{\mathcal{H}}(v; P_A, v_A)$ being the shock adiabat function implicitly defined by (2.3a). D’yakov (1954) and Erpenbeck (1962) showed that the shock front is stable against ripple perturbations if and only if

$$-1 \leq R \leq 1 + 2M_{nB}. \tag{2.8}$$

The stability range (2.8) was further restricted by Kontorovich (1958) to read

$$-1 \leq R \leq \frac{1 - M_{nB}^2(1 + v_A/v_B)}{1 - M_{nB}^2[v]/v_B}, \quad (2.9)$$

by noting that in the interval

$$\frac{1 - M_{nB}^2(1 + v_A/v_B)}{1 - M_{nB}^2[v]/v_B} < R < 1 + 2M_{nB} \quad (2.10)$$

the shock front is only neutrally stable against transverse perturbations and can spontaneously emit acoustic waves (see also Fowles 1981). Erpenbeck (1963) and Gardner (1963) also pointed out that violating the second inequality in (2.8) leads to non-uniqueness of solutions of the Riemann problem. Despite the fact that conditions (2.8) and (2.9) were derived from linear stability analysis of planar shocks, it turns out that an arbitrarily curved shock front is stable provided (2.9) is satisfied locally at each point of the front (Majda 1983). Yet, for some cases, (2.5) and (2.9) may not be sufficient to rule out unphysical solutions of the Rankine–Hugoniot relations. Further and more selective criteria, such as requiring that the shock wave admit a one-dimensional thermoviscous profile, may solve the problem of defining the admissible shocks, although it must be noticed that there is no general theory for defining appropriate admissibility conditions that applies to arbitrary equations of state (Menikoff & Plohr 1989; Kluwick 2001).

2.2. Properties of shock curves in classical gas dynamics

In the reference frame shown in figure 1, the Rankine–Hugoniot relations involve 8 parameters in total: the 2 velocity components (normal and tangent to the shock) and 2 thermodynamic quantities (e.g. pressure and density), for both the pre-shock and post-shock states. In these coordinates, the Rankine–Hugoniot relations consist of 4 functional relations (the equation of the tangential velocity (2.2b) reduces to a scalar one), so that 4 remaining parameters are needed to parametrize the solution. The choice of this set of parameters is typically based on the specific context. On many occasions, for instance, one knows the evolution of the flow up to the point where a shock wave occurs. In this respect, it is customary to specify the thermodynamic state and the total or kinetic energy content of the flow upstream of the shock, which together correspond to a triplet such as, e.g. $\mathbf{A} = (P_A, v_A, \|\mathbf{u}_A\|)$ or $\mathbf{A} = (v_A, s_A, M_A)$. Any other equivalent triplet can be obtained by simple manipulation. Given a triplet \mathbf{A} , the Rankine–Hugoniot relations determine the state downstream of an oblique shock from the considered pre-shock state, as a function of β , the angle between the shock front and the pre-shock flow direction (see figure 1). By analogy with one-dimensional unsteady flows (given a pre-shock state, one obtains the post-shock state as a function of the shock speed), the resulting locus is called the shock curve.

In the following, some renowned properties of the shock curves of oblique shocks are recalled by resorting to analogies with the one-dimensional case. Our attention, hereinafter, will be restricted to single-phase fluids exhibiting $\Gamma > 0$ in the vapour phase (BZT fluids are thus excluded), i.e. to classical gas dynamics in which shock waves are of the compressive type only. For a detailed discussion of shock curves for arbitrary equations of state, see Menikoff & Plohr (1989) and Kluwick (2001). To establish notation, a quantity X evaluated on the shock curve will be denoted as

$X^{\mathcal{H}}(\beta; \mathbf{A})$. On occasion, it will be useful to perform a change of independent variable; for ease of notation the same symbol $X^{\mathcal{H}}$ will be maintained.

The properties of the shock curves can be conveniently analysed starting from their projection in a thermodynamic plane, namely the Hugoniot locus, solution set of equation (2.3a) for a given pre-shock thermodynamic state (P_A, v_A) . The Bethe–Weyl theorem (Bethe 1942; Weyl 1949) states that if $\Gamma > 0$ throughout the thermodynamic domain of interest, the Hugoniot locus is a continuous curve parametrized by the post-shock entropy and it satisfies

$$\left. \begin{aligned} [v] < 0 \text{ and } M_{nB} < 1, & \quad \text{if } [s] > 0, \\ [v] > 0 \text{ and } M_{nB} > 1, & \quad \text{if } [s] < 0. \end{aligned} \right\} \quad (2.11)$$

Substitution of $[v] < 0$ into (2.3b) immediately yields that compressive shock waves ($[P] > 0$) only satisfy the entropy inequality and the first inequality in (2.6). By combining (2.3) with the fundamental thermodynamic identity $T ds = dh - v dP$, one obtains

$$\left. \frac{d}{ds} m^{\mathcal{H}}(s; \mathbf{A}) \right|_B = \frac{T_B}{m[v]^2}, \quad (2.12)$$

thus showing that the Hugoniot locus can be parametrized also by the mass flux m . Monotonicity of the mass flux implies that $M_{nA} > 1$ along the compressive branch of the Hugoniot locus. Therefore, if $\Gamma > 0$, compressive shock waves simultaneously fulfil the entropy inequality and the speed-ordering condition.

The Hugoniot locus can be also parametrized by the shock angle $\beta \in [\beta_{ac}, \pi/2]$, in which the lower bound $\beta_{ac} = \sin^{-1}(1/M_A)$ is the angle of the Mach lines or acoustic waves, corresponding a shock wave of vanishing intensity ($[s] = 0, M_n = 1$). Indeed, $u_{nA} = \|\mathbf{u}_A\| \sin \beta$, and hence differentiation of (2.4) yields the monotonicity condition

$$\left. \frac{d}{dm} \beta^{\mathcal{H}}(m; \mathbf{A}) \right|_B = \frac{\tan \beta}{m}. \quad (2.13)$$

Any of the post-shock entropy, mass flux and shock angle (or another quantity that varies monotonically with one of these) can be regarded as measuring the shock strength. The β -parametrization of the Hugoniot locus, in particular, appears as a natural choice in the context of oblique shock waves, where it allows for direct geometrical interpretation. Once the relationship between the pre-shock and post-shock thermodynamic quantities is determined as a function of the shock angle, the remaining kinematic quantities (post-shock velocity) are obtained from the conservation of mass (2.1a) and tangential momentum (2.2b); it follows that the shock angle parametrizes the shock curve.

We now comment on the dependence of selected thermodynamic and kinematic quantities of interest on the shock strength, which we conveniently identify with the shock angle β . Firstly, the variation of the post-shock specific volume along the shock curve is considered, which ultimately determines the shape of the shock adiabat. By differentiating the Hugoniot relation (2.3a), one finds that

$$\left. \frac{1}{v_B} \frac{d}{d\beta} v^{\mathcal{H}}(\beta; \mathbf{A}) \right|_B = - \frac{[P] \cot \beta}{\rho_B c_B^2 (1 - M_{nB}^2)} \left(2 + \frac{[v]}{v_B} G_B \right), \quad (2.14)$$

where $G = v(\partial P/\partial e)_v$ is the Grüneisen coefficient, which has the same sign of the coefficient of thermal expansion. The post-shock specific volume decreases with

increasing shock angle only if

$$2 + \frac{[v]}{v_B} G_B \geq 0, \tag{2.15}$$

which is true in the limit of weak shocks, but may be violated for finite-strength shocks if G is sufficiently large. Ordinary-shaped Hugoniot loci, however, do satisfy (2.15). This is the typical behaviour of the shock curves for most real fluids (see, e.g. Landau & Lifshitz 1987). Moreover, if $G > 0$ and thus the substance expands upon isobaric heating, which is true in most situations of interest (with the notable exception of water near freezing), equality in (2.15) determines the maximum density increase across compression shock waves. Combining the expressions of the variation of two independent thermodynamic quantities along the shock curve (e.g. the entropy and specific volume), the variation of any other post-shock thermodynamic quantities can be derived using the standard thermodynamic identities. It is readily obtained that if (2.15) holds (and $\Gamma > 0$ by earlier assumption), the post-shock pressure, internal energy and enthalpy all increase with shock strength along the compression branch of the Hugoniot locus; the same holds for the temperature if $G > 0$ in addition. Monotonicity of $v^{\mathcal{H}}(\beta; A)$ also guarantees that the shock adiabat is convex and that the shock front is stable with respect to multidimensional perturbations, cf. inequalities (2.8), though it might satisfy the conditions for spontaneous acoustic emission, namely the upper bound in (2.9) could be negative.

A thermodynamic quantity of particular interest in this work is the speed of sound, since it is directly related to the occurrence of non-ideal effects across oblique shocks. The variation of the post-shock speed of sound along the shock curve is given by

$$\begin{aligned} \left. \frac{1}{c_B} \frac{d}{d\beta} c^{\mathcal{H}}(\beta; A) \right|_B &= \frac{[P] \cot \beta}{\rho_B c_B^2 (1 - M_{nB}^2)} \left\{ \mathcal{K}_B \frac{[P]}{\rho_B c_B^2} \left(\frac{1}{M_{nB}^2} - 1 \right) \right. \\ &\quad \left. + (\Gamma_B - 1) \left(2 + \frac{[v]}{v_B} G_B \right) \right\}, \end{aligned} \tag{2.16}$$

where we introduced the dimensionless isochoric derivative of the speed of sound with the entropy $\mathcal{K} = (c/T)(\partial c/\partial s)_v$. Assuming $\mathcal{K}_B > 0$ and that (2.15) is satisfied, the post-shock speed of sound increases with the shock strength along the compression branch of the shock curve if $\Gamma_B > 1$, but can possibly decrease if $\Gamma_B < 1$.

Finally, we report the variation of the post-shock Mach number along the shock curve, which allows us to evaluate the kinematic state of the flow in the post-shock state. By combining the variations of the velocity magnitude and speed of sound, one obtains

$$\begin{aligned} \left. \frac{1}{M_B} \frac{d}{d\beta} M^{\mathcal{H}}(\beta; A) \right|_B &= \frac{[P]}{\rho_B c_B^2} \frac{\cot \beta}{1 - M_{nB}^2} \left\{ \frac{[v]}{v_B} (1 - M_{nB}^2) \left(\mathcal{K}_B + \frac{1 + G_B}{M_B^2} \right) \right. \\ &\quad \left. + J_B \left(2 + \frac{[v]}{v_B} G_B \right) \right\}, \end{aligned} \tag{2.17}$$

in which we have defined

$$J = 1 - \Gamma - \frac{1}{M^2}, \tag{2.18}$$

which is a non-dimensional measure of the Mach number dependence on the density in isentropic flows with constant total enthalpy (see Thompson 1971; Cramer & Best

1991). Assuming that $\mathcal{K}_B > 0$, $G_B > -1$ and (2.15) is satisfied, the post-shock Mach number decreases with increasing shock angle along the compression branch of the shock curve if $J_B < 0$. If instead the values of the post-shock Mach number and fundamental derivative are such that $J_B > 0$, the post-shock Mach number can possibly increase.

2.3. Non-ideal oblique shocks

Within the context of classical gas dynamics, diverse qualitative differences can be found between shock waves in the ideal-gas and non-ideal regime. Anomalies that are related to violation of condition (2.15) and to fluid states exhibiting $G < 0$ or $\mathcal{K} < 0$ are discussed by Menikoff & Plohr (1989). Here we restrict attention to compressibility-related effects that are caused by fluid states exhibiting $0 < \Gamma < 1$, that are therefore not possible in the ideal-gas limit. The parameter Γ directly controls the sound speed variation in isentropic processes as well as adiabatic, possibly non-isentropic, processes (assuming \mathcal{K} does not change its sign). For the case of oblique shock waves, the well-known formulas for ideal gases (see, e.g. Thompson 1988) indicate that the speed of sound necessarily increases across the shock (a consequence of the temperature rise). On the contrary, in the non-ideal gas dynamic regime, the speed of sound can possibly decrease following the adiabatic compression across an oblique shock, as suggested by relation (2.16).

Because the flow velocity magnitude is required to decrease across a compressive shock (the normal component decreases by mass conservation while the tangential one is conserved by momentum balance), the peculiar behaviour of the speed of sound ultimately determines the variation of the Mach number across an oblique shock,

$$M_B^2 = M_{nB}^2 + \|\mathbf{u}_t\|^2/c_B^2 \leq M_{nA}^2 + \|\mathbf{u}_t\|^2/c_A^2 = M_A^2. \tag{2.19}$$

The speed-ordering condition (2.6) requires that the normal Mach number is larger in the pre-shock state than in the post-shock state. On the contrary, no constraint is imposed on the tangential Mach number $\|\mathbf{u}_t\|/c$, whose variation across the shock is inversely proportional to the sound speed. It follows that whenever $c_B > c_A$, as in the ideal-gas limit, the Mach number necessarily decreases across any admissible shock waves. If instead $c_B < c_A$, which is possible in the non-ideal regime, the Mach number can either decrease or increase across an oblique shock; the Mach number increase will occur if the sound speed decrease is sufficiently large that the increase in the tangential Mach number compensates the necessary decrease in the normal Mach number.

Because the Mach number is the parameter of primary interest in many applications, the Mach number increase across oblique shock waves is arguably the most significant of all non-ideal compressible-fluid effects. In this sense, hereinafter we will refer to oblique shock waves featuring $M_B > M_A$ as non-ideal oblique shock waves. The analysis of the weak shock limit $\beta - \beta_{ac} \ll 1$ provides a condition of existence of non-ideal oblique shocks in terms of pre-shock quantities, since Taylor series expansion of the post-shock Mach number in the neighbourhood of the acoustic angle reads

$$\frac{[M]}{M_A} = 2 \frac{J_A}{\Gamma_A} \sqrt{M_A^2 - 1} (\beta - \beta_{ac}) + O((\beta - \beta_{ac})^2), \quad \beta \rightarrow \beta_{ac}^+. \tag{2.20}$$

For weak oblique shock waves, the sign of the Mach number variation is related to the values of the pre-shock fundamental derivative Γ_A and Mach number M_A only.

Name	M (g mol ⁻¹)	T_c (K)	P_c (kPa)	EOS	Γ_{min}
MDM	236.531	565.36	1437.5	Thol <i>et al.</i> (2017)	0.1646
MM	162.378	518.75	1939.0	Colonna <i>et al.</i> (2006)	0.3389
Octane	114.229	569.32	2497.0	Span & Wagner (2003)	0.3625
Cyclopentane	70.1629	511.72	4571.2	Gedanitz, Davila & Lemmon (2015)	0.6433
Toluene	92.1384	591.75	4126.3	Lemmon & Span (2006)	0.5637
Benzene	78.1118	562.02	4907.3	Thol, Lemmon & Span (2012)	0.6155
Sulphur	146.055	318.78	3755.0	Guder & Wagner (2009)	0.8050
Hexafluoride R245fa	134.048	427.16	3651.0	Lemmon & Span (2006)	0.7089

TABLE 1. Molecular weight M , critical temperature T_c , critical pressure P_c for selected substances. The fluid properties are computed from the equation of state (EOS) indicated in the fifth column of the table; Γ_{min} is the minimum value of the fundamental derivative in the vapour phase, as predicted by the EOS (Γ_{min} occurs along the vapour–liquid equilibrium curve). Properties and thermodynamic models are taken from the well-established REFPROP library (Lemmon, Huber & McLinden 2013).

If the combination of these values is such that $J_A > 0$, the Mach number increases across a weak oblique shock. It is readily seen that if $\Gamma_A < 1$ non-ideal oblique shocks necessarily occur when M_A is sufficiently large. The role of the fundamental parameter J will be further clarified in the following.

3. The existence domain of non-ideal oblique shocks

This section addresses the flow conditions, in terms of pre-shock thermodynamic quantities and Mach number, resulting in the non-ideal Mach number increase across oblique shocks. The choice of pre-shock Mach number as the parameter accounting for the kinematic state of the fluid ahead of the shock waves is twofold. Firstly, it is the quantity that directly enters into the definition of the parameter J , whose sign determines the direction of the Mach number variation across weak oblique shocks. Secondly, in the perfect-gas limit, several quantities of interest such as ϑ (deflection angle of the flow across the shock, see figure 1), M_B , P_B/P_A , $[s]$, etc. (see, e.g. Thompson 1988), depend uniquely on M_A and β . This also legitimizes the use of β for the shock-curve parametrization in the perspective of evaluating the differences between ideal-gas and non-ideal regime.

After identifying the different scenarios for the observation of non-ideal oblique shocks, the domain of pre-shock states that possibly lead to non-ideal oblique shocks is computed. The mentioned domain includes all the pre-shock states for which $M^{\mathcal{H}}(\beta; \mathbf{A}) > M_A$ for some values of the shock angle. Results are given for each of the fluids listed in table 1.

3.1. Influence of the pre-shock state

A parametric study is carried out to evaluate the dependence of $M^{\mathcal{H}}(\beta; \mathbf{A})$ on the pre-shock state, in the parameter space of pre-shock thermodynamic states and Mach number. To do this, we consider the projection of the shock curve on the M_B – β plane for exemplary pre-shock states that allow to illustrate the different scenarios for the occurrence of non-ideal oblique shock waves.

The fluid employed here throughout for explanatory purposes is siloxane MDM (ocatmethyltrisiloxane, $C_8H_{24}O_2Si_3$), which is modelled via the state-of-the-art multiparameter equation of state reported in table 1 together with relevant thermo-physical properties of MDM and of other substances considered in the following. MDM exhibits $\Gamma_{min} < 1$, where Γ_{min} is the minimum value of the fundamental derivative in the vapour phase, indicating that the selected fluid is endowed with a finite vapour-phase $\Gamma < 1$ region. Therefore, according to the arguments of the previous section, MDM is expected to allow for the occurrence of non-ideal oblique shock waves, provided the pre-shock state is carefully chosen. As for the other non-dimensional quantities that enter into the definition of the Mach number variation (2.17), MDM exhibits $G > 0$ and $\mathcal{K} > 0$ in the single phase vapour region to which this discussion is restricted. Moreover, G is small enough that condition (2.15) is always satisfied along shock curves originating from pre-shock thermodynamic states in the vapour region.

In contrast to the case of perfect gases, for which the post-shock to pre-shock ratios of most quantities of interest can be expressed as functions of the pre-shock normal Mach number only, the full pre-shock state plays a major role in determining the properties of oblique shock waves for arbitrary equations of state. In order to facilitate the following analysis, two parametric studies are conducted. Firstly, a parametric analysis is carried out for a fixed pre-shock Mach number and for different pre-shock thermodynamic states. Secondly, the pre-shock thermodynamic state is fixed and the pre-shock Mach number is varied.

Figure 2 shows the variation of the post-shock Mach number with the shock angle for a fixed pre-shock Mach number $M_A = 2$ and different pre-shock thermodynamic states selected along the same isentrope $s_A < s_\tau$, where s_τ denotes the isentrope tangent to the locus $J_A = 0$. Under the assumption that the pre-shock Mach number M_A is fixed, the locus $J_A = 0$ shown in figure 2 coincides with the Γ -isoline $\Gamma = 1 - 1/M_A^2$, see (2.18). The thermodynamic region between the $J_A = 0$ locus and the saturated vapour curve embeds all the possible pre-shock states exhibiting $J_A > 0$. Note that, according to (2.20), the function $M^{\mathcal{H}}(\beta; \mathbf{A})$ corresponding to pre-shock thermodynamic states having $J_A > 0$ will exhibit positive initial slope, thus indicating that the flow Mach number increases across weak oblique shock waves. Four pre-shock thermodynamic states are now considered, as representative of the possible qualitative evolution of the post-shock Mach number along the shock curve. The triplets corresponding to the marked configurations are given by $\mathbf{A}_i = (P(s_A, v_i), v_i, M_A)$, $i = 1, \dots, 4$.

State \mathbf{A}_1 is considered first, which is located on the left-hand side (higher densities) of the region $J_A > 0$. As shown in figure 2, along the shock curve originating from state \mathbf{A}_1 , the post-shock Mach number monotonically decreases with increasing shock angle. Exemplary non-monotonic Mach number variations are those corresponding to pre-shock states \mathbf{A}_2 and \mathbf{A}_3 in figure 2. State \mathbf{A}_2 is taken as representative of the Mach number evolution for pre-shock states featuring $J_A > 0$. Thus, for increasing shock angles starting from β_{ac} , the post-shock Mach number initially increases. As the magnitude of the tangential velocity decreases (i.e. with increasing shock angle), $M^{\mathcal{H}}(\beta; \mathbf{A}_2)$ reaches a local maximum and subsequently decreases towards the subsonic values characterizing strong oblique shocks. For shock curves qualitatively similar to the present case \mathbf{A}_2 , there exists a shock angle value $\tilde{\beta} = \tilde{\beta}(\mathbf{A})$, $\tilde{\beta} \neq \beta_{ac}$, such that $M^{\mathcal{H}}(\tilde{\beta}; \mathbf{A}) = M_A$. Note, however, that the computed shock curve exhibits a fairly large interval of shock angles for which the conditions of spontaneous acoustic emission are satisfied, and thus the shock front is neutrally stable.

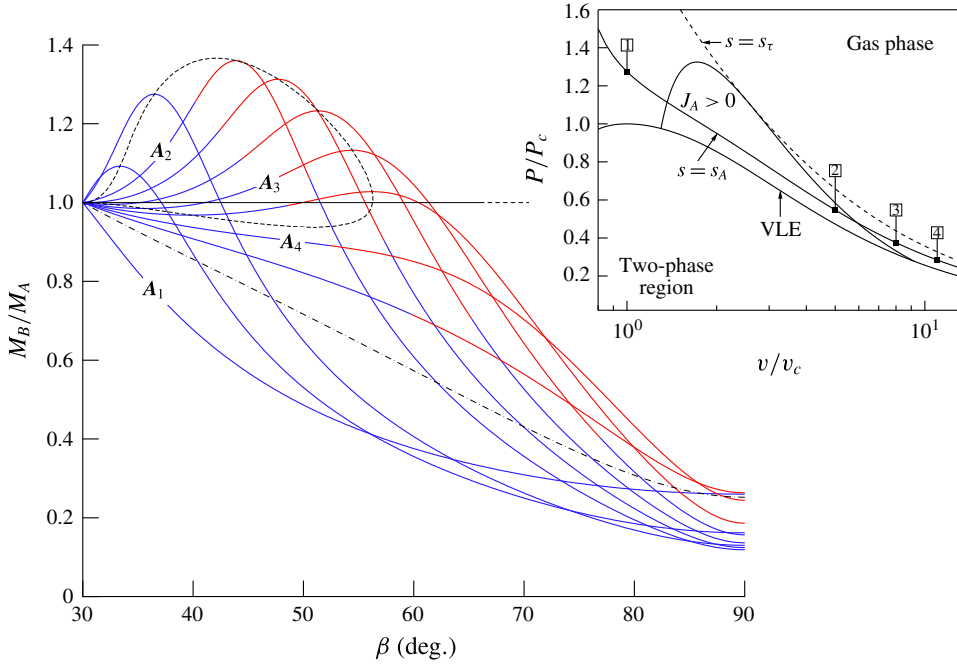


FIGURE 2. (Colour online) Shock curves for MDM in the post-shock Mach number–shock angle plane. The pre-shock Mach number is fixed to $M_A = 2$. The pre-shock thermodynamic states are selected along the same isentrope $s_A = s(1.2743P_c, v_c) < s_\tau$, with s_τ denoting the isentrope tangent to the locus $J_A = 0$ (corresponding to the Γ -isoline $\Gamma = 1 - 1/M_A^2$). Marked configurations: $v_1 = v_c$, $v_2 = 5v_c$, $v_3 = 8v_c$, $v_3 = 11v_c$. The red portions of the shock curves correspond to neutral stability of the shock front against transverse perturbations (acoustic emission). Also shown is the ideal-gas limit (dash-dotted curve) and the locus of the stationary points of $M^{\mathcal{H}}(\beta; \mathbf{A})$ for pre-shock thermodynamic states along the isentrope considered (dashed curve). VLE: liquid-vapour equilibrium (saturation) curve.

If the pre-shock state exhibits $J_A < 0$, yet the thermodynamic state is selected in close proximity to the region $J_A > 0$, as for case A_3 in figure 2, the post-shock Mach number features an interesting non-monotonic profile comprising two stationary points, with the local minimum (maximum) occurring at $M_B < M_A$ ($M_B > M_A$). Configurations qualitatively similar to A_3 thus exhibit two different shock angles $\tilde{\beta}_1 = \tilde{\beta}_1(\mathbf{A})$ and $\tilde{\beta}_2 = \tilde{\beta}_2(\mathbf{A})$, other than the acoustic angle, such that $M^{\mathcal{H}}(\tilde{\beta}_1; \mathbf{A}) = M^{\mathcal{H}}(\tilde{\beta}_2; \mathbf{A}) = M_A$; these angles delimit the β interval of Mach number increasing oblique shocks. It must be noticed, however, that a significantly larger portion of the shock curve of case A_3 (in particular, of the portion corresponding to non-ideal oblique shocks) is predicted to satisfy the conditions for acoustic emission.

By increasing the pre-shock specific volume along the reference isentrope, the two stationary points found in A_3 -like configurations occur at $M_B < M_A$ and ultimately become coincident. Therefore, any further increase in v_A is such that the post-shock Mach number monotonically decreases with increasing shock angle. Note, however, that $M^{\mathcal{H}}(\beta; \mathbf{A})$ profiles originating from pre-shock thermodynamic states relatively close to the region $J_A > 0$ can still exhibit a somewhat anomalous, non-ideal curvature (due to the sound speed decrease) as shown in the exemplary case A_4 of figure 2.

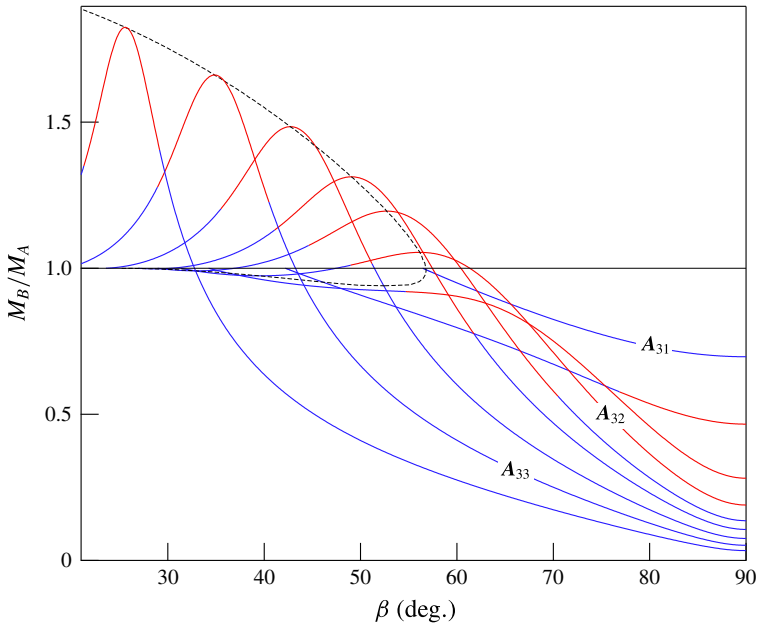


FIGURE 3. (Colour online) Shock curves for MDM in the post-shock Mach number–shock angle plane. The pre-shock thermodynamic state is fixed and corresponds to case 3 of figure 2, namely $s_A = s(1.2743P_c, v_c)$, $v_A = 8v_c$. Each curve corresponds to a different pre-shock Mach number. Marked configurations: $M_{31} = 1.2$, $M_{32} = 1.9$, $M_{33} = 3$. The red portions of the shock curves correspond to neutral stability of the shock front against transverse perturbations (acoustic emission). Also shown is the locus of the stationary points of $M^{\mathcal{H}}(\beta; \mathbf{A})$ for pre-shock thermodynamic states along the isentrope considered (dashed curve).

Next, a complementary parametric study is presented, which is carried out by fixing the pre-shock thermodynamic state and considering different pre-shock Mach numbers. Figure 3 shows exemplary variations of the post-shock Mach number with the shock angle obtained from the same pre-shock thermodynamic state, which corresponds to case 3 of figure 2, and different values of the pre-shock Mach number. The triplets corresponding to the marked configurations are given by $\mathbf{A}_i = (P(s_A, v_3), v_3, M_{3i})$, $i = 1, \dots, 3$. As in the previous study, selected configurations are detailed, as representative of the shock curve dependence on the pre-shock Mach number. For sufficiently low values of the pre-shock Mach number, $M^{\mathcal{H}}(\beta; \mathbf{A})$ is monotonically decreasing (case \mathbf{A}_{31}). By increasing the pre-shock Mach number, $M^{\mathcal{H}}(\beta; \mathbf{A})$ eventually develops an inflection point; any further increase leads to a non-monotonic configuration. As in the previous parametric study, two different configurations can possibly occur. For pre-shock Mach numbers slightly larger than the limiting value for the formation of an inflection point, the profile of post-shock Mach number is qualitatively similar to that of case \mathbf{A}_{32} , which exhibits both a local minimum and a local maximum. If the pre-shock Mach number is sufficiently large, instead, the initial slope of $M^{\mathcal{H}}(\beta; \mathbf{A})$ is necessarily positive (cf. (2.18) and (2.20), with $\Gamma_A < 1$), and the shock curve becomes qualitatively similar to case \mathbf{A}_{33} . Again, acoustic emission is predicted to occur over large portions of the shock curves.

3.2. Computing the existence domain

Based upon the results of the previous section, the flow conditions resulting in the non-ideal Mach number increases across oblique shocks are collectively considered to single out each possible pre-shock state, in terms of pre-shock thermodynamic quantities and Mach number, for which $M^{\mathcal{H}}(\beta; \mathbf{A}) > M_A$ for some values of the shock angle. The result is the definition of the domain of existence of non-ideal oblique shocks in the parameter space of pre-shock thermodynamic states and Mach number. For pre-shock states in this domain, there exists at least one value of the shock angle leading to $M^{\mathcal{H}}(\beta; \mathbf{A}) > M_A$.

A convenient procedure for the computation of the existence domain of non-ideal oblique shocks is presented here. In order to reduce the complexity associated with the dependence of the shock properties on each of the pre-shock variables, we consider a fixed pre-shock Mach number, thus isolating the contribution of the pre-shock thermodynamic state. For a given pre-shock Mach number M_A , the proposed method consists in determining, for each value of the pre-shock entropy, the limit values of the pre-shock pressure or density that bound the range where the shock curve possibly exhibits $M^{\mathcal{H}}(\beta; \mathbf{A}) > M_A$ for some values of the shock angle. These limit thermodynamic states define a locus delimiting the region in which the pre-shock thermodynamic state must be selected (together with the given M_A) in order to observe a non-ideal oblique shock. As the pre-shock Mach number is varied, this procedure determines a one-parameter family of thermodynamic regions embedding all the pre-shock states from which non-ideal oblique shock can possibly occur.

The proposed approach is first illustrated for MDM and one value of M_A and then it is applied in the next section to the fluids listed in table 1 for several values of M_A , confirming the general validity and applicability of the concept outlined here.

In §2.3, the shock curves considered were entirely enclosed in the single-phase vapour region. Here we consider also the cases in which the shock curves enter the two-phase region, limiting the discussion to their single-phase vapour portion. The shock angle leading to post-shock saturated conditions will be denoted by $\beta_{sat} = \beta_{sat}(\mathbf{A})$. Crossing the liquid–vapour equilibrium curve (VLE or saturation curve) possibly occurs if a portion of the saturated vapour boundary is retrograde, which means that certain isentropes (and in turn, some shock adiabats) cross the phase boundary from the single towards the two-phase region, in the direction of increasing density. Siloxane fluid MDM is one such case of fluid with retrograde behaviour. Note, in this respect, that substances featuring $\Gamma < 1$ regions in the vapour phase typically have heat capacities large enough that a portion of the saturated vapour boundary is retrograde (see Thompson, Carofano & Kim 1986).

With reference to the parametric studies carried out in §3.1, three different types of $M^{\mathcal{H}}(\beta; \mathbf{A})$ profiles were identified. These include the ideal-gas-like (Mach number decreasing) case and two non-ideal cases (possibly Mach number increasing); the latter were distinguished depending on the positive/negative slope in the weak shock limit. For the ideal configuration, it can be noticed that, if the shock adiabat is entirely enclosed within the thermodynamic region $\Gamma > 1 - 1/M_A^2$, the function $M^{\mathcal{H}}(\beta; \mathbf{A})$ is monotonically decreasing. This follows from the fact that $M_B < M_A$ for weak shocks, with $J_A < 0$, and from $\Gamma_B > 1 - M_A^2$, which therefore gives $J_B < 0$ along the shock curve. Substituting this into relation (2.17) yields the monotonicity of the post-shock Mach number with the shock angle ($\mathcal{K} > 0$, $G > 0$ and (2.15) holds from earlier assumption). Examples of shock adiabats that satisfy the aforementioned condition are those originating from pre-shock states exhibiting $s_A > s_{\tau}$ or from pre-shock states

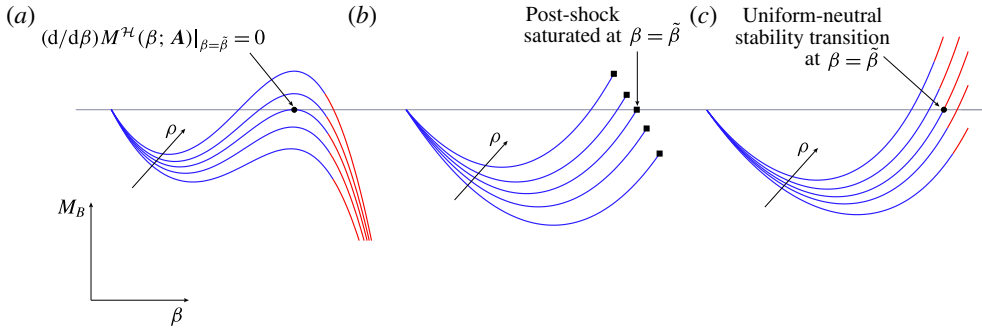


FIGURE 4. (Colour online) Illustration of the limit shock curves in the M_B - β diagram. Solid squares: post-shock saturated conditions; red line: acoustic emission is predicted to occur. The shock angle $\tilde{\beta} \neq \beta_{ac}$ indicates that the Mach number is preserved across the shock, namely $M^{\mathcal{H}}(\tilde{\beta}; \mathbf{A}) = M_A$. (a) The limit curve exhibits $dM^{\mathcal{H}}(\beta; \mathbf{A})/d\beta|_{\beta=\tilde{\beta}} = 0$; (b) on the limit curve, the post-shock thermodynamic state associated with $\beta = \tilde{\beta}$ lies on saturated phase boundary; (c) transition from uniform to neutral stability occurs at $\beta = \tilde{\beta}$ on the limit curve.

$s_A < s_\tau$ that are either on the left-hand side of the $J_A > 0$ region (case \mathbf{A}_1 in figure 2) or entering the two-phase region at a point where $\Gamma > 1 - 1/M_A^2$.

On the other hand, shock curve originating from pre-shock states featuring $J_A > 0$ necessarily lead to $M^{\mathcal{H}}(\beta; \mathbf{A})$ profiles embedding a non-ideal portion $M_B \geq M_A$. This range is of the type $\beta \in [\beta_{ac}, \tilde{\beta}]$, see case \mathbf{A}_2 in figure 2, or of the type $\beta \in [\beta_{ac}, \beta_{sat}]$ if the shock curve enters the two-phase region within the Mach number increasing portion, that is $M^{\mathcal{H}}(\beta_{sat}; \mathbf{A}) > M_A$.

Finally, it was shown that pre-shock states satisfying $s_A < s_\tau$ and $J_A < 0$, yet in the close proximity of the low-density zero of J_A along the selected isentrope, possibly lead to $M^{\mathcal{H}}(\beta; \mathbf{A})$ functions of the non-ideal type. In this case, the interval of shock angles corresponding to $M_B \geq M_A$ is of the form $\beta \in [\tilde{\beta}_1, \tilde{\beta}_2]$, see case \mathbf{A}_3 in figure 2, or of the form $\beta \in [\tilde{\beta}_1, \beta_{sat}]$ if $M^{\mathcal{H}}(\beta_{sat}; \mathbf{A}) > M_A$.

Following the above considerations, the upper and lower pre-shock density limit for non-ideal post-shock Mach number profiles, along any given isentrope $s_A < s_\tau$, can be determined as follows:

- (i) the upper pre-shock density limit is either the high-density zero of J_A along the selected isentrope or the saturation curve, if the selected isentrope enters the two-phase region and $J_A > 0$ at the saturated vapour boundary;
- (ii) with reference to figure 4, the lower pre-shock density limit corresponds to the pre-shock state leading either to the shock curve depicted in figure 4(a), which is characterized by $dM^{\mathcal{H}}(\beta, \mathbf{A})/d\beta = 0$ at $\beta = \tilde{\beta}$ ($M_B = M_A$), or to the shock curve in figure 4(b), where the post-shock state corresponding to $M_B = M_A$ occurs on the saturation curve, namely $\tilde{\beta} = \beta_{sat}$ on the limit curve;
- (iii) the conditions for acoustic emission may be satisfied within the complete non-ideal region $M_B > M_A$ of a shock curve, thus resulting in a narrower domain of pre-shock states for non-ideal oblique shocks that are uniformly stable against multidimensional perturbations. In the related limit shock curve, the transition from uniform to neutral stability occurs at $\beta = \tilde{\beta}$ ($M_B = M_A$), as shown in figure 4(c).

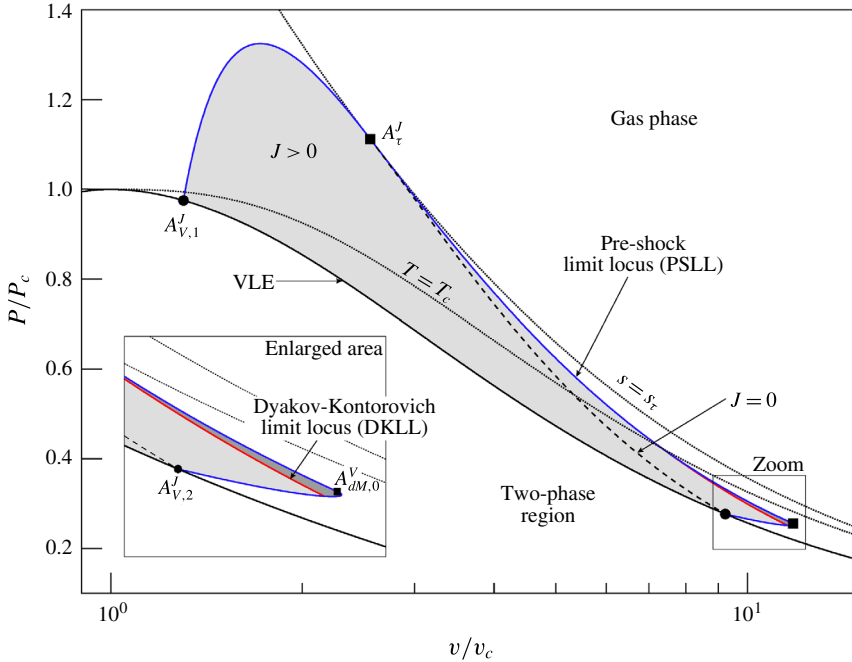


FIGURE 5. (Colour online) Pre-shock state domain (shaded area) for non-ideal oblique shock waves in MDM with fixed pre-shock Mach number $M_A = 2$. The domain is bounded by the pre-shock limit locus (PSLL, blue line) and by the vapour–liquid equilibrium (VLE) line. Points $A_{V,1}^J$ and $A_{V,2}^J$ indicate the high- and low-density intersection, respectively, of the $J_A = 0$ locus with the VLE line. The isentrope passing through A_{τ}^J is tangent to the $J_A = 0$ locus. The shock curve centred on $A_{dM,0}^V$ simultaneously features $dM^{\mathcal{H}}(\beta; \mathbf{A})/d\beta|_{\beta=\tilde{\beta}} = 0$ and $\tilde{\beta} = \beta_{sat}$. From pre-shock states in the dark-shaded region (enlarged area), uniformly stable non-ideal oblique shocks cannot occur. This region is bounded by the PSLL and the D’yakov–Kontorovich limit locus (DKLL).

By varying the reference isentrope, the existence domain of non-ideal oblique shocks as computed from the proposed procedure is shown in figure 5 for $M_A = 2$. The newly defined thermodynamic region is bounded by three different curves, which together define the so-called pre-shock limit locus (PSLL). Firstly, the portion of PSLL between point $A_{V,1}^J$, the high-density zero of J along the VLE line, and point A_{τ}^J , for which the isentrope is tangent to the $J = 0$ locus, is indeed coincident with the $J = 0$ locus. The branch included between A_{τ}^J and $A_{dM,0}^V$ represents the locus of the limit pre-shock states resulting in shock curves featuring $dM^{\mathcal{H}}(\beta, \mathbf{A})/d\beta = 0$ when $M_B = M_A$ (figure 4a). At point $A_{dM,0}^V$, the shock curve simultaneously exhibits $dM^{\mathcal{H}}(\beta, \mathbf{A})/d\beta = 0$ at $\beta = \tilde{\beta}$ ($M_B = M_A$) and $\tilde{\beta} = \beta_{sat}$. The portion of the PSLL between point $A_{dM,0}^V$ and $A_{V,2}^J$, the low-density zero of J along the VLE line, is obtained by collecting the limit pre-shock states for which $\tilde{\beta} = \beta_{sat}$, that is, post-shock saturated conditions occur when $M_B = M_A$ (figure 4b). Furthermore, the locus denoted as DKLL (D’yakov–Kontorovich limit locus) bounds a relatively small region (on its right-hand side) of pre-shock states leading to shock curves in which acoustic emission occurs over the entire β -range associated with $M^{\mathcal{H}}(\beta; \mathbf{A}) > M_A$. For pre-shock states in the

right-hand side region of the DKLL, there does not exist uniformly stable non-ideal oblique shocks.

In the next section, the procedure outlined above is applied to the different fluids listed in table 1 to show its validity. Among the fluids considered, MDM, MM, octane, cyclopentane, toluene, benzene and R245fa all exhibit retrograde vapour boundaries; sulphur hexafluoride only exhibits a non-retrograde vapour boundary. The procedure for the computation of the existence domain of non-ideal oblique shocks in fluids having non-retrograde vapour boundaries is almost identical to that described above. When the saturated vapour boundary is non-retrograde, the shock curves centred on pre-shock states in the vapour phase cannot cross the two-phase region, thus remaining single phase. This implies that transitional shock curves of the type shown in figure 4(b) cannot occur. Therefore, with reference to the procedure outlined in the previous paragraph, the lower pre-shock density limit, along any given isentrope crossing the $J_A > 0$ locus, is either the saturation curve or the pre-shock state leading to the transition depicted in figure 4(a).

3.3. Results for selected substances

The procedure described in the previous section for MDM and one particular value of M_A is applied here to the fluids listed in table 1 and the influence of M_A is also evaluated. The Pre-shock limit loci and the D'yakov-Kontorovich limit loci in the selected fluids are reported, for different pre-shock Mach numbers, in figure 6(a–h). All the substances considered are endowed with a $\Gamma < 1$ thermodynamic region. Moreover, for each of these fluids, $\mathcal{K} > 0$, $G > 0$ and condition (2.15) is satisfied in the single-phase vapour region to which the present discussion is restricted. The selected siloxanes (cases a–b), hydrocarbons (cases b–f) and R234fa (case h) exhibit a retrograde portion of the saturated vapour boundary; accordingly, the corresponding pre-shock limit curves are qualitatively similar to those obtained in the previous section for MDM with $M_A = 2$. On the other hand, sulphur hexafluoride (case g) exhibits a fairly simpler configuration as a result of its saturated vapour boundary being non-retrograde. In this case, according to the nomenclature used in figure 5, the portion of PSL on the right-hand side of point A_r^J (comprising pre-shock states for shock curves featuring $dM^{\mathcal{H}}(\beta, A)/d\beta = 0$ when $M_B = M_A$) extends to a point on the VLE line.

It must be noticed that, among the configurations depicted in figure 6(a–g), only MDM, MM and octane exhibit limit curves for acoustic emission (DKLL), possibly owing to the lower values of Γ_{min} and the larger extension of the region $\Gamma < 1$ with respect to the other fluids considered here.

The influence of the pre-shock Mach number on the shape and extension of the pre-shock state region for non-ideal oblique shock waves, which can be appreciated from figure 6(a–g), can be commented as follows. Firstly, there exist a minimum threshold of the pre-shock Mach number $M_{A,min} = (1 - \Gamma_{min})^{-1/2}$, below which non-ideal oblique shocks cannot occur. This amounts to requiring that $\Gamma < 1 - 1/M_A^2$ somewhere in the single-phase vapour region. The condition $\Gamma < 1 - 1/M_A^2$ is necessary for the existence of non-ideal oblique shocks having pre-shock Mach number M_A . Indeed, assuming $G > 0$, $\mathcal{K} > 0$ and that (2.15) holds, $J_B > 0$ must be satisfied somewhere along the shock curve in order that the post-shock Mach number is non-decreasing, see equation (2.17). Unless $J_B > 0$ holds in the acoustic limit (namely $J_A > 0$ and $M_B > M_A$ for weak oblique shocks), $J_B > 0$ must be satisfied when $M_B < M_A$. Both cases clearly imply that $\Gamma < 1 - 1/M_A^2$ somewhere in the

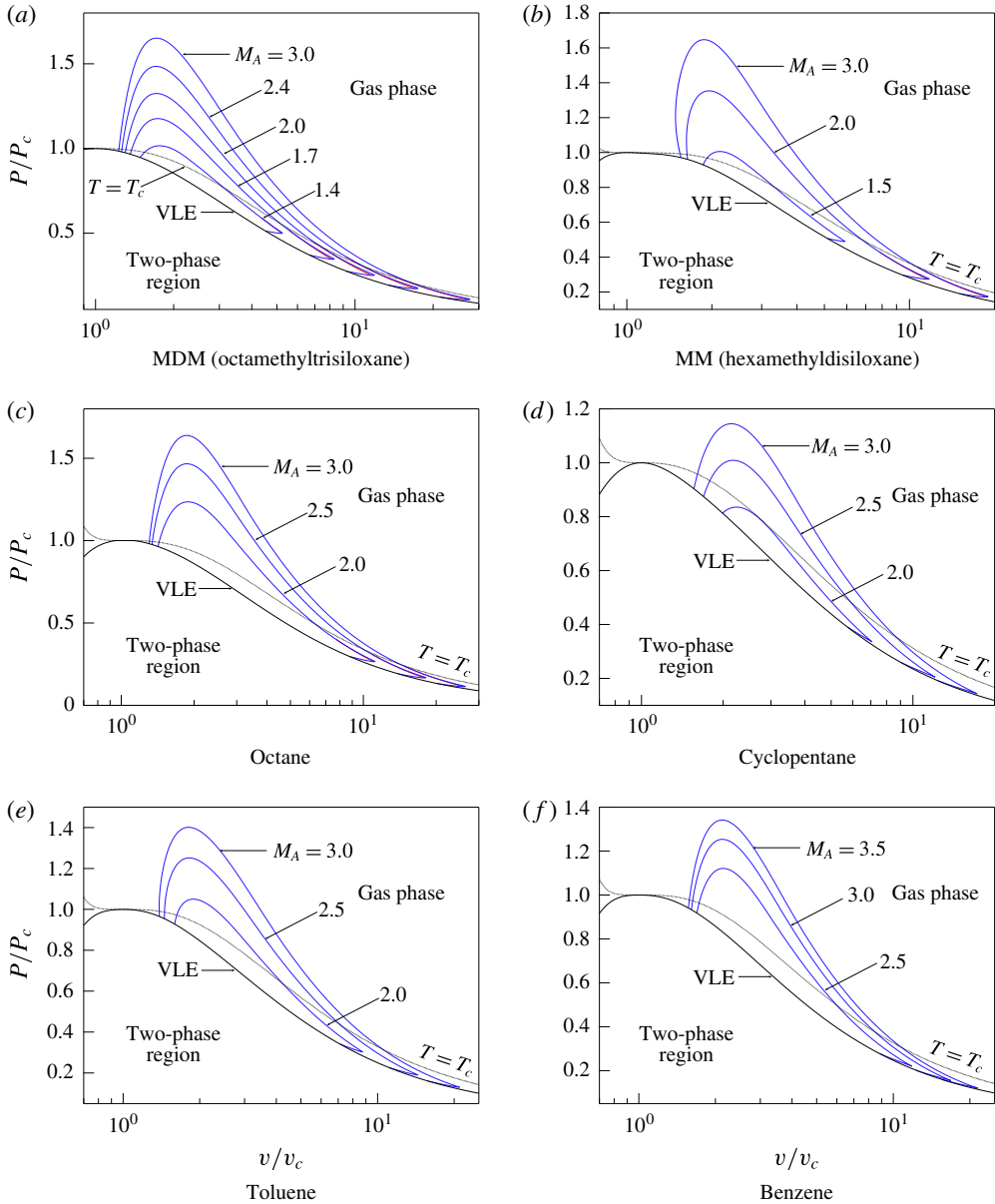


FIGURE 6. For caption see next page.

thermodynamic state space. With increasing values of the pre-shock Mach number, the size of the pre-shock state domain for non-ideal oblique shocks increases (as the size of the $J_A > 0$ region does), whereas its shape remains qualitatively unchanged. In this respect, the size of Γ isolines (and thus of $J = 0$ loci for fixed M_A , which roughly coincides with the newly defined thermodynamic domain) of most pure fluids increases with Γ (see, e.g. Colonna, Guardone & Nannan 2007, for siloxanes). More in general, the qualitative trend of the fundamental derivative in the single-phase vapour region of all fluids having regions $\Gamma < 1$ agrees with the predictions of the simple van der Waals model (see, e.g. Thompson & Lambrakis 1973), which in turn

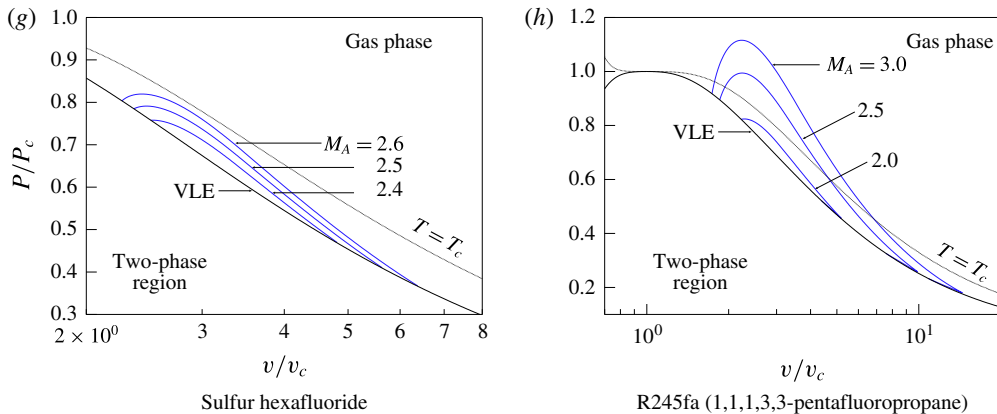


FIGURE 6 (contd.). (Colour online) PSLL (blue line) and DKLL (red line) for different pre-shock Mach numbers, in each of the substances listed in table 1.

are consistent with the results obtained in the present section. The latter claim leads us to expect that the present findings are arguably valid for most single-phase fluids exhibiting $\Gamma < 1$ in the vapour region.

4. Conclusions

Non-ideal oblique shock waves, featuring an increase of the value of the flow Mach number across the discontinuity, were investigated in the context of single-phase vapour flows of fluids exhibiting positive nonlinearity. The increase of the Mach number results from the decrease of the speed of sound across the shock wave, which is predicted to be possible only in the non-ideal gas dynamic regime of fluids characterized by moderate-to-high molecular complexity.

By examining oblique shocks in the M_B - β plane, the different scenarios for the observation of Mach number increasing configurations were identified, pointing out the roles of the pre-shock thermodynamic quantities and Mach number. Considerations of multidimensional shock stability, in terms of D'yakov-Kontorovich conditions for acoustic emission or neutral stability to transverse perturbations of the shock front, were also given.

In the parameter space associated with the pre-shock state variables (thermodynamic quantities and Mach number), the flow conditions leading to the occurrence of non-ideal oblique shocks were singled out. As a result, a family of thermodynamic regions, parametrized by the pre-shock Mach number M_A , was introduced. For a given value of M_A , the newly defined regions embed all the pre-shock thermodynamic states from which non-ideal oblique shocks can possibly occur. The computational procedure for determining the admissibility domain of non-ideal oblique shocks was first illustrated using siloxane MDM and subsequently applied to other fluids, yielding consistent results. For each of the fluids considered, state-of-the-art thermodynamic models were used.

The present analysis is valid under the hypotheses that, in the single-phase vapour region, (i) the specific volume monotonically decreases with shock strength along the compression branch of the Hugoniot locus, (ii) the Grüneisen coefficient is positive and (iii) the speed of sound increases with the entropy at constant volume. These conditions are arguably not limiting, insofar as they are verified for most

vapours of practical interest. Under the above assumptions, it was shown that a necessary condition for the occurrence of non-ideal oblique shock waves is that a thermodynamic region featuring fundamental derivative $\Gamma < 1$ exists. In particular, for any given pre-shock Mach number M_A , it is required that $\Gamma < 1 - 1/M_A^2$ somewhere in the thermodynamic state space. Therefore, the present findings arguably apply to most vapours exhibiting $\Gamma < 1$ and are expected to be relevant for various non-ideal compressible-fluid applications including Organic Rankine Cycle power systems, high-enthalpy flows in wind tunnels and space propulsion.

Acknowledgement

This research is supported by ERC Consolidator Grant N. 617603, Project NSHOCK, funded under the FP7-IDEAS-ERC scheme.

REFERENCES

- BETHE, H. A. 1942 The theory of shock waves for an arbitrary equation of state. *Tech. Paper* 545. Office Sci. Res. & Dev.
- COLONNA, P. & GUARDONE, A. 2006 Molecular interpretation of nonclassical gasdynamics of dense vapors under the van der Waals model. *Phys. Fluids* **18** (5), 056101,1–14.
- COLONNA, P., GUARDONE, A. & NANNAN, N. R. 2007 Siloxanes: a new class of candidate Bethe–Zel’dovich–Thompson fluids. *Phys. Fluids* **19** (10), 086102,1–12.
- COLONNA, P., NANNAN, N. R., GUARDONE, A. & LEMMON, E. W. 2006 Multiparameter equations of state for selected siloxanes. *Fluid Phase Equilib.* **244** (2), 193–211.
- CRAMER, M. S. & BEST, L. M. 1991 Steady, isentropic flows of dense gases. *Phys. Fluids A* **3** (4), 219–226.
- CRAMER, M. S. & KLUWICK, A. 1984 On the propagation of waves exhibiting both positive and negative nonlinearity. *J. Fluid Mech.* **142**, 9–37.
- D’YAKOV, S. P. 1954 On the stability of shock waves. *Zh. Eksp. Teor. Fiz.* **27** (3), 288–295.
- ERPENBECK, J. J. 1962 Stability of step shocks. *Phys. Fluids* **5** (10), 1181–1187.
- ERPENBECK, J. J. 1963 Reply to comments by Gardner. *Phys. Fluids* **6** (9), 1368–1368.
- FOWLES, G. R. 1981 Stimulated and spontaneous emission of acoustic waves from shock fronts. *Phys. Fluids* **24** (2), 220–227.
- GARDNER, C. S. 1963 Comment on ‘Stability of step shocks’. *Phys. Fluids* **6** (9), 1366–1367.
- GEDANITZ, H., DAVILA, M. J. & LEMMON, E. W. 2015 Speed of sound measurements and a fundamental equation of state for cyclopentane. *J. Chem. Engng Data* **60** (5), 1331–1337.
- GORI, G., VIMERCATI, D. & GUARDONE, A. 2017 Non-ideal compressible-fluid effects in oblique shock waves. *J. Phys.: Conf. Ser.* **821** (1), 012003.
- GUDER, C. & WAGNER, W. 2009 A reference equation of state for the thermodynamic properties of sulfur hexafluoride (SF₆) for temperatures from the melting line to 625 K and pressures up to 150 MPa. *J. Phys. Chem. Ref. Data* **38** (1), 33–94.
- HARINCK, J., GUARDONE, A. & COLONNA, P. 2009 The influence of molecular complexity on expanding flows of ideal and dense gases. *Phys. Fluids* **21** (8), 086101.
- KLUWICK, A. 2001 *Handbook of Shock Waves, Rarefaction Shocks*, chap. 3.4, pp. 339–411. Academic Press.
- KONTOROVICH, V. M. 1958 Concerning the stability of shock waves. *J. Expl Theor. Phys.* **33**, 1525–1526.
- LAMBRAKIS, K. C. & THOMPSON, P. A. 1972 Existence of real fluids with a negative fundamental derivative Γ . *Phys. Fluids* **15** (5), 933–935.
- LANDAU, L. D. & LIFSHITZ, E. M. 1987 *Fluid Mechanics*, 2nd edn. Pergamon Press.
- LAX, P. D. 1957 Hyperbolic systems of conservation laws ii. *Commun. Pure Appl. Maths* **10** (4), 537–566.

- LEMMON, E. W., HUBER, M. L. & MCLINDEN, M. O. 2013 *NIST Reference Database 23: Reference Fluid Thermodynamic and Transport Properties–REFPROP, Version 9.1*. Standard Reference Data Program.
- LEMMON, E. W. & SPAN, R. 2006 Short fundamental equations of state for 20 industrial fluids. *J. Chem. Engng Data* **51** (3), 785–850.
- MAJDA, A. 1983 *The Existence of Multi-dimensional Shock Fronts*, vol. 281. American Mathematical Society.
- MENIKOFF, R. & PLOHR, B. J. 1989 The Riemann problem for fluid flow of real material. *Rev. Mod. Phys.* **61** (1), 75–130.
- NANNAN, N. R., GUARDONE, A. & COLONNA, P. 2014 Critical point anomalies include expansion shock waves. *Phys. Fluids* **26** (2), 021701.
- NANNAN, N. R., SIRIANNI, C., MATHIJSEN, T., GUARDONE, A. & COLONNA, P. 2016 The admissibility domain of rarefaction shock waves in the near-critical vapour–liquid equilibrium region of pure typical fluids. *J. Fluid Mech.* **795**, 241–261.
- SCHNERR, G. H. & LEIDNER, P. 1991 Diabatic supersonic flows of dense gases. *Phys. Fluids A* **3** (10), 2445–2458.
- SPAN, R. & WAGNER, W. 2003 Equations of state for technical applications. II. Results for nonpolar fluids. *Intl J. Thermophys.* **24** (1), 41–109.
- THOL, M., HERRIG, S., KÖRBER, M., DUBBERKE, F. H., SPAN, R. & VRABEC, J. 2017 Speed of sound measurements and fundamental equations of state for octamethyltrisiloxane and decamethyltetrasiloxane. *J. Chem. Eng. Data* **62** (9), 2633–2648.
- THOL, M., LEMMON, E. W. & SPAN, R. 2012 Equation of state for benzene for temperatures from the melting line up to 725 K with pressures up to 500 MPa. *High Temp. - High Pressures* **41** (2), 81–97.
- THOMPSON, P. A. 1971 A fundamental derivative in gasdynamics. *Phys. Fluids* **14** (9), 1843–1849.
- THOMPSON, P. A. 1988 *Compressible Fluid Dynamics*. McGraw-Hill.
- THOMPSON, P. A., CAROFANO, G. C. & KIM, Y. G. 1986 Shock waves and phase changes in a large-heat-capacity fluid emerging from a tube. *J. Fluid Mech.* **166**, 57–92.
- THOMPSON, P. A. & LAMBRAKIS, K. C. 1973 Negative shock waves. *J. Fluid Mech.* **60**, 187–208.
- WEYL, H. 1949 Shock waves in arbitrary fluids. *Commun. Pure Appl. Maths* **2** (2–3), 103–122.
- ZEL'DOVICH, Y. B. 1946 On the possibility of rarefaction shock waves. *Zh. Eksp. Teor. Fiz.* **4**, 363–364.