

New CMEIAS Image Analysis Software for Computer-Assisted Microscopy of Microorganisms and Their Ecology

Frank B. Dazzo

Michigan State University
dazzo@msu.edu

Microscopy is one of the most important techniques in microbial ecology, since this is the most direct approach to examine the microbe's world from its own perspective and spatial scale. The value of quantitative microscopy in studies of microbial ecology can be increased even further when used in conjunction with computer-assisted image analysis. There are two main advantages of using digital image processing and pattern recognition techniques in conjunction with microscopy for quantitative studies of microbial ecology. First, automatic image analysis reduces the amount of tedious work with microscopes needed to accurately quantify *in situ* morphological diversity, abundance and metabolic activity of microbes. Secondly, these techniques provide an important quantitative tool that can significantly enhance the polyphasic analysis of the structure, diversity, spatial features, and functions of complex microbial communities *in situ* without cultivation.

One of the most important and yet most tedious tasks performed during microscopical analysis of microbial communities is the classification of observed cells into known morphological categories and recognition of new categories as well if new distinct characteristics are captured. Use of morphological diversity in evaluations of microbial community structure is more useful and valid if the cells are actively growing rather than in a non-growing state of quiescence, since the latter is more commonly associated with pleomorphic dwarf cells. This is because distinctive cell morphologies reflect the phenotypic expression of complex networks of genes involved in the synthesis and maturation of the shape-determining murein sacculus, plus other genes dedicated to the cell division cycle that are primarily expressed during active growth.

A major challenge in microbial ecology is to develop reliable and facile methods of computer-assisted microscopy that can analyze digital images of complex microbial communities at single cell resolution, and compute useful quantitative characteristics of their organization and structure without cultivation. Although several image analysis systems can classify microbes according to their cell size, automatic classification of cells according to their distinctive morphology (a dimensionless characteristic based on several shape features) represents a much more challenging task. Most commercial image analysis systems include some shape measurement features that compute the roundness or circularity of cells, and these characteristics are sufficient to distinguish regular rods and cocci, the most common shapes of bacteria. However, the difficulty increases with morphological diversity, since automatic classification of most other microbial morphotypes requires measurement of multiple shape and size features to resolve the distribution of their morphological space. Some custom image analysis systems are adequate for automatic shape classification of spheres, straight rods, and vibroids or prolate spheroids. This represents the morphological diversity of some marine bacterioplankton communities. However, comprehensive image analysis systems capable of automatically classifying much broader morphological diversity in complex bacterial communities, as commonly exists in nutrient-enriched habitats containing actively growing bacteria that are larger in size and typically monomorphic, did not exist prior to development of

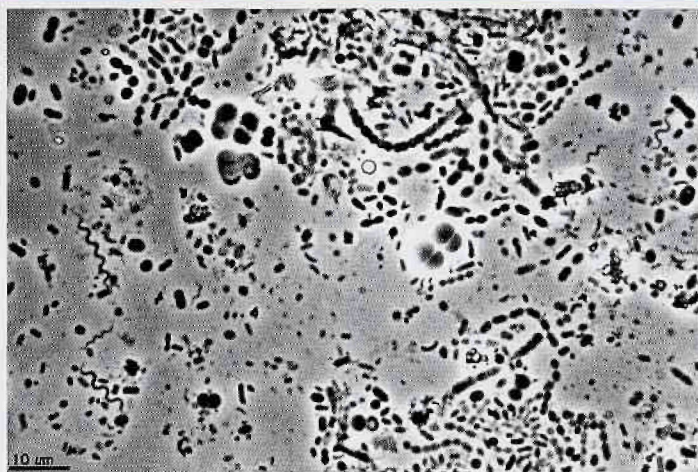


Fig. 1. Actively growing microbial communities contain a large diversity of bacterial morphotypes, as shown directly by this phase contrast light photomicrograph of bovine rumen fluid. Acquiring an image similar to this image for the cover of Bergey's Manual was my spark of inspiration to develop CMEIAS.

our new software application.

This recognition of the need to develop a comprehensive computer-aided image analysis system that could extract from images all the information needed to recognize and classify the morphological diversity component of microbial communities came to a pinnacle when I was preparing photomicrographs of the microbial community in the bovine rumen for the cover illustration of the 9th Edition of Bergey's Manual of Determinative Bacteriology (Fig. 1).

That work clearly indicated the following key points:

- Contrary to current popular thinking about microbial community analysis, microscopy *does* reveal significant morphological diversity in complex, actively growing microbial communities.
- Automatic morphotype classification of complex communities exhibiting high morphological diversity will require development of a more flexible and robust computer-assisted image analysis system than those currently available.
- Phase-contrast light microscopy of dispersed samples immobilized on agarose-coated slides is a simple yet effective direct method to acquire images with the resolution and range of object brightness at high magnification that are sufficient to reveal the rich morphological diversity of actively growing microbial communities. Its essential requirements to detect microbes are that their size exceeds the $\sim 0.2 \mu\text{m}$ limit for light microscopy, their refractive index differs from that of the surrounding medium, and high-quality optics are available to acquire the images.

A team of microbiologists, mathematicians, and computer

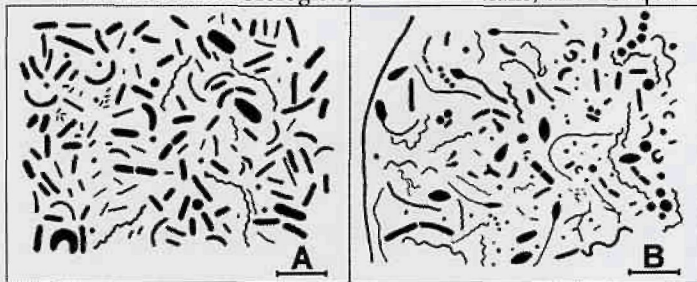


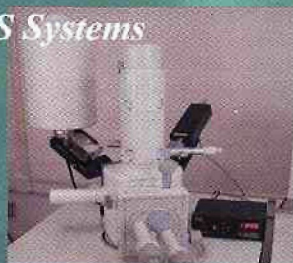
Fig. 2.) A high quality 8-bit grayscale digital image is first edited in an image editing program such as Adobe Photoshop so that all foreground objects of interest have a brightness range outside that of background, and then converted into a binary image using UTHSCSA ImageTool Ver. 1.27. In this example, two binary composite images were made, each contain 170 microbes representing the distribution of morphotype abundance in different (A and B) anaerobic bioreactor communities. Bar scales equal $10 \mu\text{m}$.

Piecing Together Analytical Solutions



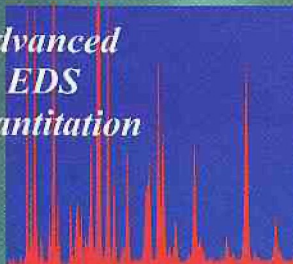
*Micro X-Ray
Fluorescence for your
SEM*

EDS Systems



*Digital Imaging and
Advanced Feature
Measurements*

*Advanced
EDS
Quantitation*



Whether it is Digital Image Analysis, X-ray Mapping or Quantitative EDS you are looking for, IXRF has your solution. Designed to meet the analytical needs of you, the user, simple yet powerful tools provide a price to performance ratio that is unparalleled.

- Flexible, full customization throughout the software
- Comprehensive, adaptive spectrum processing and the highest level of quantitative analysis
- Powerful, automated, and complete statistical digital image analysis that includes Feature Analysis on phases or particles
- Highly interactive, showcase, full-spectrum x-ray mapping that includes fractionated phase or chemical composition statistical analysis

Remember: As evidence of our commitment to our customers, IXRF will provide *Free* software upgrades for as long as you own your system. Our software is improved and upgraded largely based on customer suggestions.

But this should be old news. Over the past decade IXRF has fundamentally changed the industry. As another example of our dedication to innovation, we are offering, with an industry first, the addition of small-spot XRF analysis to the world of Scanning Electron Microscopy. Experience elemental sensitivities and detection limits that are 10-100 times greater than electron beam excitation. Imagine looking at a sample and seeing 5 elemental peaks. *NOW*, imagine "discovering" an additional 25 peaks!!

We pride ourselves in customer service. Call us at (281) 286-6485 to talk to any of our staff, or ask one of our hundreds of customers- after all- they're our best sales people!

IXRF Systems, Inc.
15715 Brookford Dr.
Houston, TX, 77059
USA
www.ixrf.com



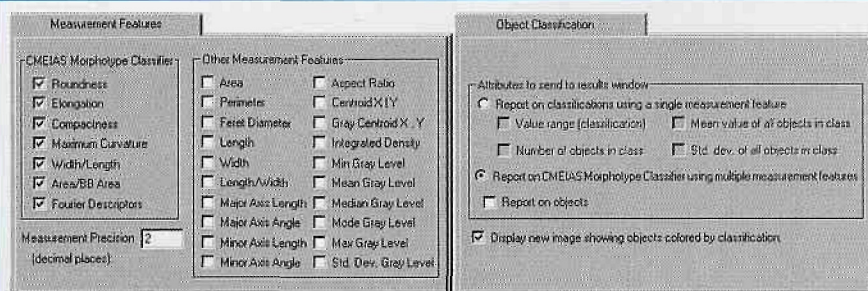


Fig. 3.) Set the required measurement feature attributes and object classification preferences in UTHSCSA Image Tool to begin CMEIAS morphotype classification.

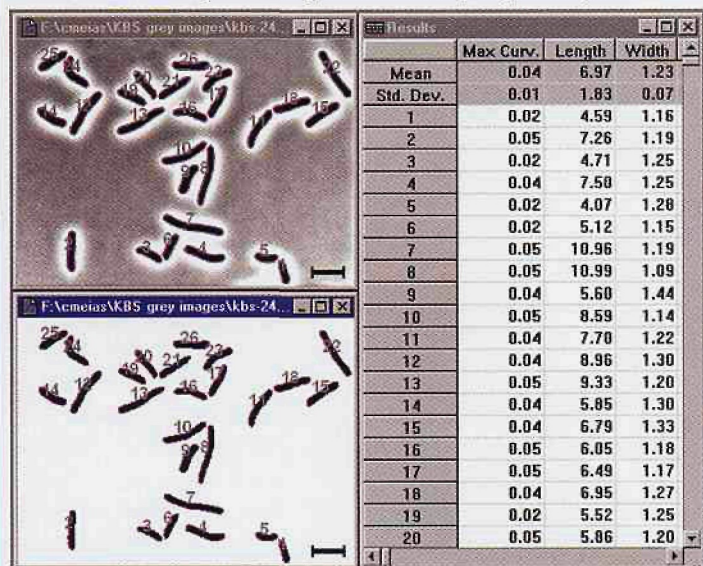


Fig. 4.) CMEIAS/ImageTool finds the foreground objects (microbes) in the images using a thresholding procedure, assigns a numbered annotation to each microbe found, and reports the total object count in the image. It then performs an object analysis on the image and displays the values for each shape measurement feature selected in a Results window worksheet.

scientists at Michigan State University have improved on existing image analysis systems of computer-assisted microscopy by introducing new measurement features and robust object classifiers capable of automatically classifying most of the predominant microbial morphotypes encountered in digital micrographs of complex microbial communities growing in nutrient-enriched habitats, and have implemented these features in a flexible, user-friendly and robust semi-automatic image analysis system to strengthen microscopy-based methods for understanding microbial ecology. We named the program "CMEIASSM", an acronym for the Michigan State University Center for Microbial Ecology Image Analysis System. CMEIAS Ver. 1.27 is not a stand-alone program, but rather consists of several custom plug-ins designed to operate in the host program UTHSCSA ImageToolSM Ver. 1.27, a free downloadable open-architecture software operating on a personal computer. Two of these CMEIAS 1.27 plug-ins (objanal.dll and objclass.dll) are derived work, representing modified plugin versions of object analysis and object classification plug-ins and not the original UTHSCSA ImageTool distributed by the University of Texas. The accuracy of microbial morphotype classification has been thoroughly tested against ground truth data using CMEIAS v. 1.27 in UTHSCSA ImageTool running in Windows NT 4.0 (Liu et al. 2001). Similar results have been obtained using the Windows 2000 Professional operating system. Also, limited operational testing has indicated compatibility with

Windows 95/ME/XP, but quantitative measurements of CMEIAS accuracy have not been evaluated for CMEIAS/ImageTool 1.27 using these alternative operating systems.

To perform a morphotype classification using CMEIAS 1.27 in ImageTool, the operator first finds the objects of interest in the image by using a thresholding procedure, then conducts an Object Analysis to extract various size and shape measurements from each microbe present, and finally uses these Object Analysis data to perform an Object Classification that automatically assigns the appropriate morphotype to each microbe found. This object classification

procedure uses a series of pattern recognition algorithms optimized by us for 11 major microbial morphotypes represented by 98% of the genera described in the 9th Edition of Bergey's Manual of Determinative Bacteriology. Extensive testing using large ground truth data sets indicate that CMEIAS performs with an overall morphotype classification accuracy of 97% on properly edited images.

The CMEIAS data output is a results window that reports on the types of different morphotypes found and the abundance among each of them. These data can be used to compute various indices of morphological diversity and distribution of numerical abundance in microbial community analysis. An interactive edit feature is included to address the main sources of error in automatic morphotype classification, enabling the operator to inspect the morphotype assigned to each microbe in the image based on visual recognition of its distinctive pseudocolor, reassign it to another morphotype class if necessary, and add up to five other morphotypes to the supervised classification scheme.

Comprehensive descriptions of CMEIAS Ver. 1.27, including its rationale for development, algorithms of size and shape measurements, statistical rules of pattern recognition for each morphotype classification, results of thorough accuracy testing, sources of error and limitations, and an example of how CMEIAS can augment the polyphasic analysis of growing, complex microbial communities are presented in our publication Liu et al., 2001. Microbial Ecology

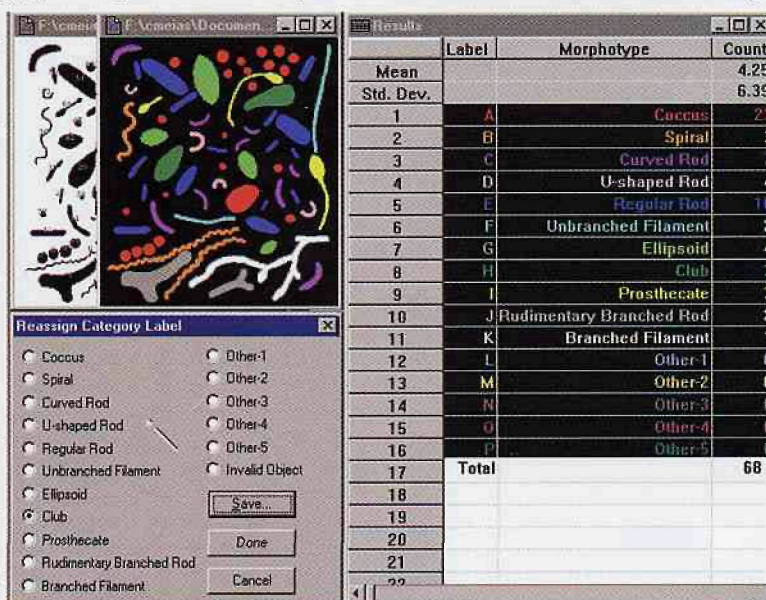
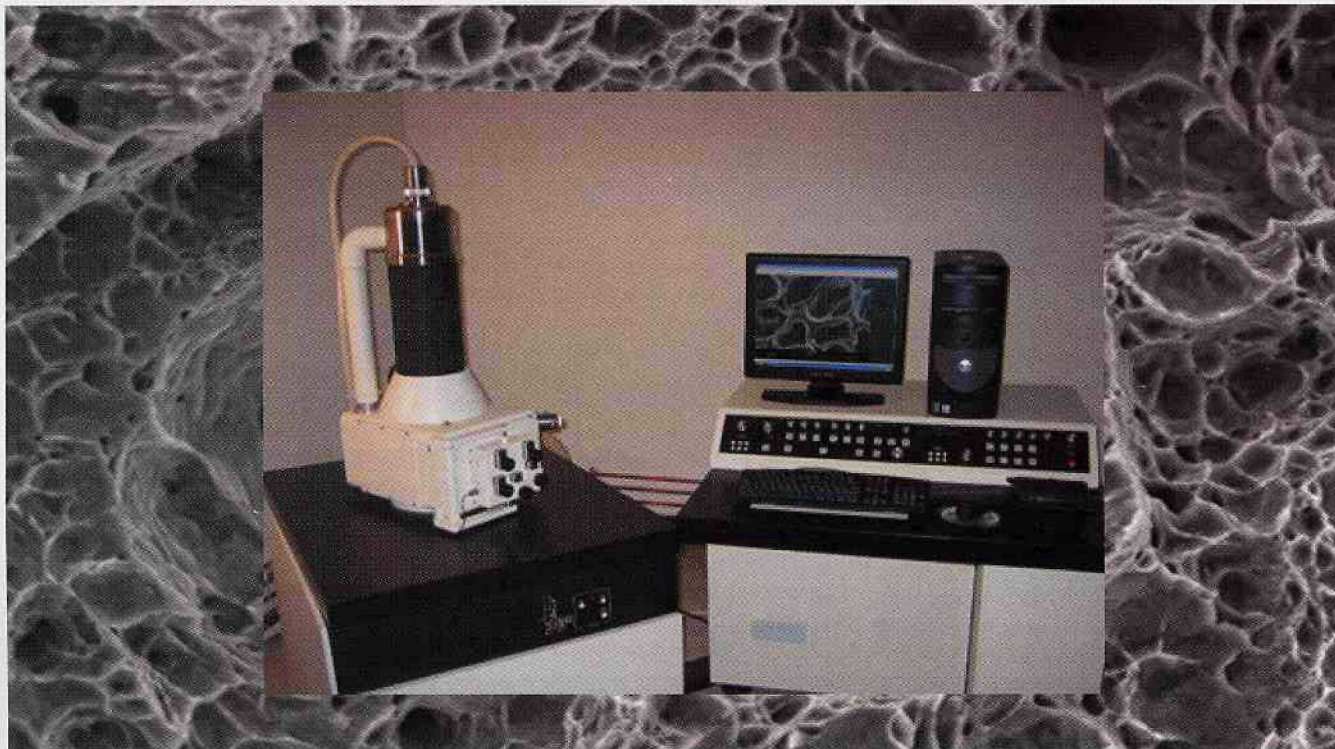


Fig. 5.) CMEIAS then uses these extracted analysis data to perform object classification (identify morphotypes), tabulates the classification data in the Results window, and creates a new image in which each microbe is distinctively pseudocolored according to its assigned morphotype.

Scanning Electron Microscopes



Why Buy a New SEM?

SEMTEch Solutions offers pre-owned, rebuilt, and upgraded Scanning Electron Microscopes.

We offer Digital Imaging, Computer and EDS Upgrades that make our SEMs easy to use, at an affordable price.

Monthly Leasing Options are available.

SEMTEch Solutions has numerous SEMs available at our Massachusetts demo facility.

Call us to schedule a demonstration or visit us at

www.semtechsolutions.com



**SEMTEch
Solutions, Inc.**

**6 Executive Park Drive
North Billerica, MA 01862
Tel: 978/663-9822**



Fig. 6.) CMEIAS then allows you to inspect the classification assignments in the pseudocolored image, and if necessary (errors occur at a 3% rate), to manually edit individual morphotype classifications using the Reassign Category Label interactive edit feature, as illustrated here using the pseudocolored classification result images of community B. The red coccobacillus (white arrow, center of left image) is reclassified as a regular straight rod (blue, right image) and the corresponding classification data automatically update.

41(3):173-194 and 42:215. An operator manual and interactive tutorial are also provided in the CMEIAS 1.27 download.

CMEIAS/ImageTool can also measure various object size attributes (cell length,width, area, perimeter, Feret diameter, major axis length, minor axis length) and classify the cell size distribution in microbial populations and communities. A unique feature of the length and width measurement attributes of CMEIAS is that the algorithms used to compute them are adaptive to object shapes, and therefore the values reported are more accurate over a wider range of object shapes than alternate algorithms that are invariant to object shape. In theory, these measurement attributes and shape classifications could be used to analyze and classify any foreground object in the digital image.

Abbreviated CMEIAS Demo:

In this example, the major steps to analyze the morphological diversity of two community images using CMEIAS/ImageTool 1.27

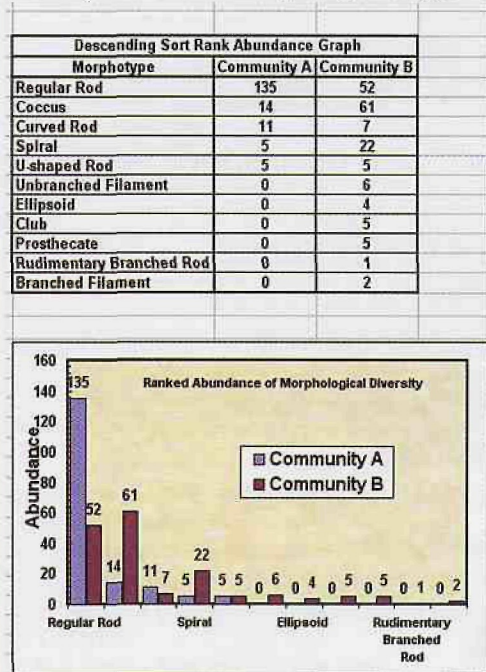


Fig. 7.) Community morphotype analysis data can then be copied to the clipboard and exported to Windows-compatible spreadsheet programs (e.g. Excel, EcoStat) where they can be graphed and analyzed statistically. CMEIAS analysis of this pair of images indicates that communities A and B have 48.82% proportional similarity in morphological diversity, with Community B being 2.2-fold higher in morphotype richness and diversity indices and 1.6-fold higher in distribution of morphotype evenness.

are presented in figures 2 through 7. A more detailed version of these image analysis steps is available in the operator manual and training tutorial website downloads.

In summary, CMEIAS® is an accurate, robust, flexible semi-automatic computing tool that fills a major gap by significantly strengthening microscopy-based quantitative approaches to understanding microbial ecology at spatial scales relevant to the microbe's niche, and should serve as a useful adjunct in the analysis of microbial community structure *in situ* without cultivation. A free download of CMEIAS ver. 1.27 is available for educational and research purposes at <http://cme.msu.edu/cmeias/>. ■

If you acquire image analysis data using CMEIAS/ImageTool, we ask that you cite us in the following way:

"Digital images were analyzed using CMEIAS Ver. 1.27 (Liu et al. 2001) operating in UTHSCSA ImageTool Ver. 1.27 (Wilcox et al. 1997)."

Citations:

- 1) Liu J., F.B. Dazzo, O. Glagoleva, B. Yu, A.K. Jain. 2001. CMEIAS: A computer-aided system for the image analysis of bacterial morphotypes in microbial communities. *Microbial Ecology* 41(3):173-194 and 42:215. <http://cme.msu.edu/cmeias/>
- 2) Wilcox C.D., S.B. Dove, W. Doss-McDavid, and D.B. Greer. 1997. UTHSCSA ImageTool Ver. 1.27, <http://www.ddsdx.uthscsa.edu/dig/itdesc.html>. Univ. of Texas Health Science Center, San Antonio, TX, USA.

Below is a list of published studies that include data acquired by CMEIAS. We will periodically update this list with references sent to us by CMEIAS users. Please send references in the format shown to cmeiasfd@msu.edu or dazzo@msu.edu.

Dazzo, F., and J. Wopereis. 2000. Unraveling the infection process in the *Rhizobium*-legume symbiosis by microscopy. In E. Triplett (ed.), *Prokaryotic nitrogen fixation: a model system for the analysis of a biological process*; Chap. 19; pp. 295-347. Horizon Scientific Press, UK.

Dazzo, F.B., Y.G. Yanni, R. Rizk, F. de Bruijn, J. Rademaker, A. Squartini, V. Corich, P. Mateos, E. Martinez-Molina, E. Velazquez, J. Biswas, R. Hernandez, J.K. Ladha, J. Hill, J. Weinman, B. Rolfe, M. Vega-Hernandez, J.J. Bradford, R.I. Hollingsworth, P. Ostrom, E. Marshall, T. Jain, G. Orgambide, S. Philip-Hollingsworth, E. Triplett, K. Malik, J. Maya-Flores, A. Hartmann, M. Umali-Garcia, and M.L. Izaguirre-Mayoral. 2000. Progress in multi-national collaborative studies on

the beneficial association between *Rhizobium* leguminosarum bv. trifolii and rice. In J.K. Ladha and P.M. Reddy (eds.), *The Quest for Nitrogen Fixation in Rice*. International Rice Research Institute, Manila, The Philippines, pp. 167-189.

Fernandez, A., S. Hashsham, S. Dollhopf, L. Raskin, O. Glagoleva, F.B. Dazzo, R. Hickey, C. Criddle, and J.M. Tiedje. 2000. Flexible community structure correlates with stable community function in methanogenic bioreactor communities perturbed by glucose. *Appl. Environ. Microbiol.* 66: 4058-4067.

Hashsham, S., A. Fernandez, S. Dollhopf, F.B. Dazzo, J.M. Tiedje, R. Hickey, and C.S. Criddle. 2000. Parallel processing of substrate correlates with greater functional stability in methanogenic bioreactor communities perturbed by glucose. *Appl. Environ. Microbiol.* 66: 4050-4057.

Liu, J., F.B. Dazzo, O. Glagoleva, B. Yu, and A. Jain. 2001. CMEIAS: a computer-aided system for the image analysis of bacterial morphotypes in microbial communities. *Microbial Ecology* 41: 173-194 and 42:215.

Dollhopf S., S.A. Hashsham, F.B. Dazzo, C. Criddle, and J.M. Tiedje. 2001. The impact of fermentative organisms on carbon flow in methanogenic systems under constant low substrate conditions. *Appl. Microbiol. Biotechnol.* 56: 531-538.

Liu, J., F.-I. Liu, E. Marshall, and F.B. Dazzo. 2000. CMEIAS® Software for Computer-Assisted Microscopy of Microbial Communities. Annual Mtg., Long-Term Ecological Research in Row-Crop Agriculture. Michigan State Univ. East Lansing, MI.

Dazzo, F.B., J. Liu, F-I. Liu, and G.P. Robertson. 2001. *In situ* analysis of microbial communities on the 2 day-old white clover rhizoplane and the mature BT-corn phylloplane using CMEIAS innovative software for computer-assisted microscopy. Annual Mtg. Long-Term Ecological Research in Row-Crop Agriculture. Michigan State Univ. East Lansing, MI.

Y.G. Yanni, R.Y. Rizk, F.K. Abd El-Fattah, A. Squartini, V. Corich, A. Giacomini, F. de Bruijn, J. Rademaker, J. Maya-Flores, P. Ostrom, M. Vega-Hernandez, R.I. Hollingsworth, E. Martinez-Molina, P. Mateos, E. Velazquez, J. Wopereis, E. Triplett, M. Umali-Garcia, J.A. Anarna, B.G. Rolfe, J.K. Ladha, J. Hill, R. Mujoo, P.K. Ng, and F.B. Dazzo. 2001. The beneficial plant growth-promoting association of *Rhizobium leguminosarum* bv. trifolii with rice roots. *Austr. J. Plant Physiol.* (now *Functional Plant Biology*) 28: 845-870.

McDermott, T.R., and F.B. Dazzo. 2002. Use of fluorescent antibodies for studying the ecology of soil- and plant-associated microbes. In C. Hurst, R.C. Crawford, G.R. Knudsen, M.J. McInerney, and L.D. Stetzenbach (eds.), *Manual of Environmental Microbiology* 2nd ed., Chapter 28, p. 615-626, American Society for Microbiology Press, Washington, DC.

C. Reddy, J. Liu, M. Wadekar, A. Prabhu, D. Trione, E. Marshall, J. Zurdo, F-I. Liu, J. Urbance, and F. B. Dazzo. 2002. New features of CMEIAS: innovative software for computer-assisted microscopy of microorganisms and their ecology. 2002 Annual Mtg., Long-Term Ecological Research in Row-Crop Agriculture. Michigan State Univ. East Lansing, MI.

F. B. Dazzo, J. Liu, A. Prabhu, C. Reddy, M. Wadekar, R. Peretz, R. Bollempalli, D. Trione, E. Marshall, J. Zurdo, H. Hammoud, J. Wang, M. Li, D. McGarrell, A. Gore, J. Maya-Flores, S. Gantner, and N. Hollingsworth. 2003 CMEIAS v. 3.0: Integrative software package to strengthen microscopy-based approaches for understanding microbial ecology. 2003 Annual Mtg., Long-Term Ecological Research in Row-Crop Agriculture. Michigan State Univ. East Lansing, MI. (Summary of CMEIAS upgrade currently under development.) <http://lter.kbs.msu.edu/Meetings/2003_All_Inv_Meeting/Abstracts/dazzo.htm>

Dazzo, F.B., A.R. Joseph, A.B. Gomaa, Y.G. Yanni, and G.P. Robertson. 2003. Quantitative indices for the autecological biogeography of a *Rhizobium* endophyte of rice at macro and micro spatial scales. *Symbiosis* 34: 147-158.

Dazzo, F.B. 2004. Applications of quantitative microscopy in studies of plant surface microbiology. In: A. Varma, L. Abbott, D. Werner, and R. Hampp (eds.), *Plant surface microbiology*. Springer-Verlag, Germany, pp. 503-550.

SCOPETRONIX PHONE/FAX (239)945-6763

Introducing the MaxView Plus Digital Camera Attachment System

The MaxView Plus kit includes adapters to fit microscopes & optical devices with any of the following attachments; C-Mount, C/S-Mount, T-Mount, 23mm Eyepiece Port, 30mm Eyepiece Port, and 1.25" Eyepiece Ports



The MaxView Plus can also be used as a high quality wide angle eyepiece with the included thread-on eyeguard. The MaxView Plus is "T" threaded on top so you will need the appropriate Attachment Kit to mate it to your particular digital camera. We carry dozens of attachment kits to fit most all popular digital cameras and we update them regularly so your MaxView Plus will not become obsolete when it is time to upgrade to a new camera. If using it with a 35mm SLR you will need the appropriate T-Ring for your brand of camera.

The heart of the MaxView system. A wide field 40mm focal length four element symmetrical (Plossl) lens assembly specially mounted in a carefully designed custom cell. The lens is mounted only 1mm from the top to maintain the close coupling required to reduce vignetting. The cell features a unique sliding collar assembly which serves several important functions, it allows quick and easy removal of the camera, it allows you to adjust eyeguard height for easy visual use, allows you to adjust magnification when used with a 35mm camera, and allows you to adjust lens position to minimize vignetting with a digital camera.

MaxView Plus Kit only \$299.00

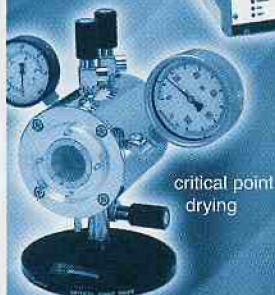


ScopeTronix Astronomy Products • 1423 SE 10th Street Unit 1A • Cape Coral, Florida 33990
 Phone/Fax 24 HOUR ONLINE SHOPPING & SECURE ORDERING
 (239)945-6763 **WWW.SCOPETRONIX.COM**

the **Polaron** range

Advanced Preparation

Electron Microscopy preparation products from "POLARON" the most respected name in the industry



Break the Barriers

Uncompromised quality instruments backed by a **FIVE YEAR WARRANTY** program

EBSsciences
 ADDING BRILLIANCE TO YOUR VISION

Tel: 800 992 9037 or 413 786 9322
 email: ebs@ebsciences.com
www.ebsciences.com

Contact us for critical point dryers, sputter coaters, carbon evaporators, high vacuum evaporators, plasma reactors and many more...

www.quorumtech.com