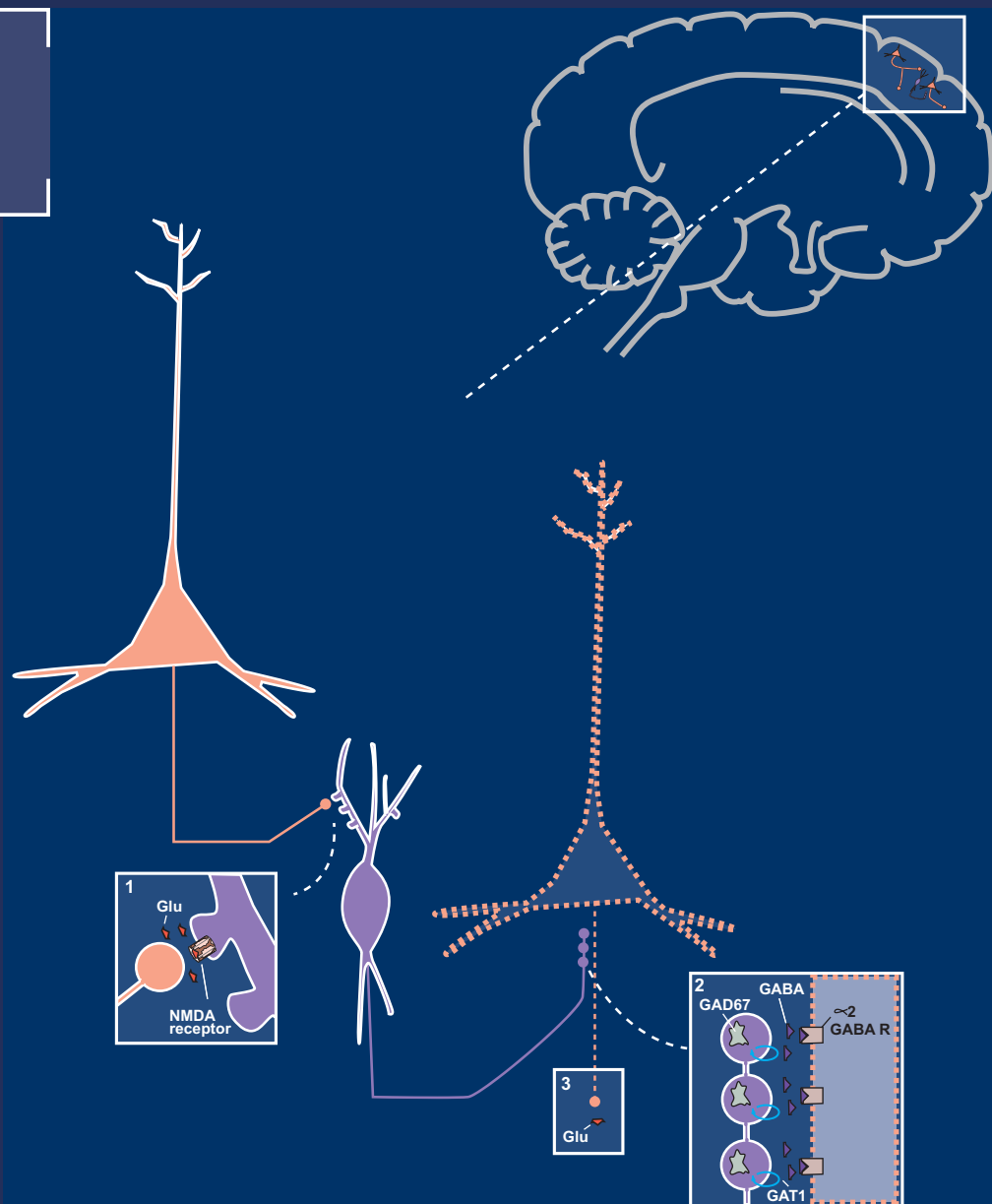


VOLUME 18 | Supplement 1

December 2013

ISSN: 1092-8529



[journals.cambridge.org/cns](http://journals.cambridge.org/cns)

# CNS SPECTRUMS

EDITOR-IN-CHIEF: **STEPHEN M. STAHL**



The journal of the  
**Neuroscience  
Education Institute**



**CAMBRIDGE  
UNIVERSITY PRESS**

**Editor-in-Chief**

Stephen M. Stahl, Adjunct Professor of Psychiatry at the University of California San Diego, USA;  
Honorary Visiting Senior Fellow at the University of Cambridge, UK.

**Field Editors**

Joseph F. Goldberg, Icahn School of Medicine at Mount Sinai, USA  
Terence Arthur Ketter, Stanford University, USA  
Thomas E. Schlaepfer, University Hospital Bonn, Germany  
Carlos A. Zarate, National Institute of Mental Health, USA

**Deputy Editor**

Thomas L. Schwartz, SUNY Upstate Medical University at Syracuse, USA

**Editorial Board**

Dennis S. Charney, Mount Sinai School of Medicine, USA  
Maria Conceição do Rosario, University of São Paulo Medical School, Brazil  
Jeffrey L. Cummings, Cleveland Clinic, USA  
Thilo Deckersbach, Harvard Medical School, USA  
Koen Demyttenaere, University Psychiatric Center KuLeuven, Belgium  
Karen D. Ersche, University of Cambridge, UK  
Robert L. Findling, Case Western Reserve University, USA  
Joseph F. Goldberg, Icahn School of Medicine at Mount Sinai, USA  
Mark S. George, Medical University of South Carolina, USA  
Eric Hollander, Albert Einstein College of Medicine and Montefiore Medical Center, USA  
Daphne Holt, Harvard Medical School, USA  
Peter B. Jones, University of Cambridge, UK  
Andres M. Kanner, University of Miami, USA  
Terence Arthur Ketter, Stanford University, USA  
Anthony D. Loebel, New York University School of Medicine, USA  
Donatella Marazziti, University of Pisa, Italy  
Herbert Y. Meltzer, Northwestern University, USA  
Mario F. Mendez, University of California, Los Angeles, USA  
Philip Mitchell, University of New South Wales, Australia  
Jun Nakamura, University of Occupational and Environmental Health, Japan  
Humberto Nicolini, National Mexican Institute of Psychiatry, Mexico  
Andrew A. Nierenberg, Harvard Medical School, USA  
Stefano Pallanti, University of Florence, Italy  
Katharine A. Phillips, Brown University, USA  
Diego A. Pizzagalli, Harvard Medical School, USA  
Mark H. Pollack, Rush University Medical Center, USA  
Mark H. Rapaport, Emory University, USA  
Irismar Reis de Oliveira, Universidade Federal da Bahia, Brazil  
Trevor W. Robbins, University of Cambridge, UK  
Peter P. Roy-Byrne, University of Washington School of Medicine, USA  
Barbara J. Sahakian, University of Cambridge, UK  
Gerard Sanacora, Yale University School of Medicine, USA  
Alan F. Schatzberg, Stanford University School of Medicine, USA  
Thomas L. Schwartz, SUNY Upstate Medical University in Syracuse, USA  
Jordan W. Smoller, Harvard Medical School, USA  
Dan J. Stein, University of Cape Town (UCT), South Africa  
Stephen Strakowski, University of Cincinnati, USA  
T. Scott Stroup, Columbia University, USA  
Frank I. Tarazi, Harvard Medical School, USA  
Michael E. Thase, University of Pennsylvania, USA  
Michael Trimble, National Hospital for Neurology, Queen Square, London  
Madhukar H. Trivedi, University of Texas Southwestern Medical Center, USA  
Karen Dineen Wagner, The University of Texas Medical Branch, USA  
Katherine D. Warburton, Department of State Hospitals, USA  
Stephen R. Wisniewski, University of Pittsburgh, USA  
Shigeto Yamawaki, Hiroshima University, Japan  
Carlos A. Zarate, Jr., National Institute of Mental Health, USA  
Joseph Zohar, Tel Aviv University, Israel

**Content Editor**

Lisa Arrington, Cambridge University Press (larrington@cambridge.org)

---

**Cover Image:** The image on the cover shows a hypothetical model whereby glutamate is released from an intracortical pyramidal neuron and binds to an NMDA receptor on a GABA-ergic interneuron. GABA is then released and binds to receptors on the axon of another glutamate pyramidal neuron. This inhibits the neuron, thus reducing the release of cortical glutamate. The GABA interneuron and its NMDA synapse from the first neuron to the second is the hypothetical site of glutamate dysfunction in schizophrenia.

Stahl's Essential Psychopharmacology, 4th edition, by Stephen M. Stahl

Copyright © 2013 Stephen M. Stahl. Reproduced with permission.

# CNS SPECTRUMS

## CME SUPPLEMENT

### CONTENTS

**A review of FDA-approved treatment options in bipolar depression**

Roger S. McIntyre, Danielle S. Cha, Rachael D. Kim and Rodrigo B. Mansur

1

**A neuroscientific update on monoamine oxidase and its inhibitors**

Thomas L. Schwartz

22

**Novel agents in development for the treatment of depression**

Meghan M. Grady and Stephen M. Stahl

34

**Twisting the night away: a review of the neurobiology, genetics, diagnosis, and treatment of shift work disorder**

Debbi Ann Morrissette

42

**Understanding depot antipsychotics: an illustrated guide to kinetics**

Jonathan M. Meyer

55



Neuroscience  
Education Institute

RAISE YOUR STANDARD OF  
CARE. STAY CURRENT IN  
PSYCHOPHARMACOLOGY.

# NEI MEMBERSHIP

ACCESS  
VALUABLE  
BENEFITS TO  
ENHANCE  
PATIENT  
CARE

Call us at  
1-888-535-5600  
or visit  
[www.neiglobal.com](http://www.neiglobal.com)  
today!

Join exceptional mental  
health clinicians as a  
member of NEI.

- *CNS Spectrums* journal
- NEI Master Psychopharmacology Program
- Free CME credits
- Clinically relevant education
- Resources for your patients
- Discounts to the NEI Congress
- And more!

Use promo code  
SPECTRUMS1 to  
join NEI for just  
\$199.\*



\* Cannot be combined with other sales or promotions.