

Volume 27, No. 2, April 1976

GENRA8 27 (No. 2) 95-351 (1976) 0016-6723

GENETICAL RESEARCH



CAMBRIDGE UNIVERSITY PRESS

GENETICAL RESEARCH

EDITORIAL BOARD

CHARLOTTE AUERBACH W. HAYES MARY F. LYON
R. H. PRITCHARD R. RILEY A. ROBERTSON

EXECUTIVE EDITOR

E. C. R. REEVE

ASSISTANT EXECUTIVE EDITOR

N. S. WILLETTS

GENETICAL RESEARCH publishes original work on all aspects of genetics, or in any field of research which has an important bearing on genetics. Papers will be submitted to referees, and will generally be printed in order of acceptance. Short papers (see notes for contributors) will be given priority in publication.

© Cambridge University Press 1976

For permission to reproduce material from GENETICAL RESEARCH, please apply to the London or New York office of Cambridge University Press.

ISI Tear Service, 325 Chestnut Street, Philadelphia, Pennsylvania 19106, U.S.A. is authorized to supply single copies of separate articles for private use only.

GENETICAL RESEARCH is published once every two months.

Single parts £5.00 net (in U.S.A. and Canada US \$14.00), plus postage.

Three parts form a volume. The subscription price of volumes 27 and 28, 1976 (which includes postage) is £14.00 net per volume (in U.S.A. and Canada US \$39.00).

Copies of the journal for subscribers in the U.S.A. and Canada are sent by air to New York to arrive with minimum delay. Second class postage is paid at New York, N.Y.

Orders should be sent to a bookseller or to the publishers, Cambridge University Press, 200 Euston Road, London NW1 2DB and, in the U.S.A. and Canada, 32 East 57th Street, New York, N.Y. 10022.

Claims for missing issues can only be considered if made immediately after receipt of the subsequent issue.

NOTES FOR CONTRIBUTORS

CONTRIBUTIONS are welcomed from scientists of all nationalities, but must be written in English, with an English summary. An additional summary in French, German, Russian or Italian will be accepted. Papers should be sent to the Executive Editor, Dr E. C. R. Reeve, Institute of Animal Genetics, West Mains Road, Edinburgh 9.

GENERAL Submission of a paper will be taken to imply that it is unpublished and is not being considered for publication elsewhere. Material from papers published in *Genetical Research* may not be reprinted or published in translation without permission from the Editorial Board. Papers should be as concise as clarity permits, and illustrations kept as few as possible.

SHORT PAPERS This category is designed for concisely written reports of work for which rapid publication is considered desirable. Such papers will normally be published within three months of receipt in acceptable form. They should not exceed 6 pages of print in length, and should normally include a summary.

TYPESCRIPTS A top copy and one carbon copy should be submitted. They should be typed with double-spacing, on one side of the paper, leaving margins of about $1\frac{1}{2}$ inches at the left-hand side, and at the top and bottom of each sheet. Both copies should include a complete set of illustrations. Heavily corrected manuscripts may have to be sent back to the author for retyping. The address of the laboratory at which the work was carried out will be printed with the authors' names at the head of the paper, and changes of address and sources of financial support may be added in footnotes. The title page of the typescript should include a short title for running headlines (limited to 50 letters and spaces), and the name and address of the author (or his proxy) to whom the proofs are to be sent, under the heading: *Proofs to be sent to . . .* Main headings should be typed in capitals and (except summary and references) numbered consecutively. Subheadings should be typed in lower case, and underlined except for those words and symbols which would be italicized in the text. Subheadings should be numbered (i), (ii), etc. within each main heading.

SUMMARY The summary will be printed at the beginning of the paper. It should give a concise abstract of the significant content and conclusions of the paper, in a form suitable for abstracting journals to use, and should not exceed 250 words.

PLATES should be supplied as unmounted glossy prints; any lettering to be inserted on them is best indicated on a separate sketch. Please do not damage prints by writing on their backs or by using paper clips.

DIAGRAMS should be about twice the size of the printed figure, but not larger than 12×8 inches, unless exceptionally complicated, and the thickness of lines and size of points should be determined accordingly. They must be drawn in indian ink on white Bristol-board, tracing linen or graph paper ruled in pale blue

(but not other colours). *Lettering* should be lightly inserted *in soft pencil only*, so that the printer can put in the finished lettering. Legends to illustrations must be given on a separate sheet of paper. Each illustration must have the name of the author and figure number pencilled on the back. Plates and diagrams should be numbered separately and their approximate position indicated on the typescript.

TABLES Each table should be typed on a separate sheet of paper and its approximate position in the text indicated on the typescript. Each should be numbered and carry an appropriate title. The table should be designed, whenever possible, to be printed in the normal orientation of the text. The data should be grouped so as to make the use of rules unnecessary. Vertical rules, in particular, are expensive to print, and will only be included at the Editor's discretion.

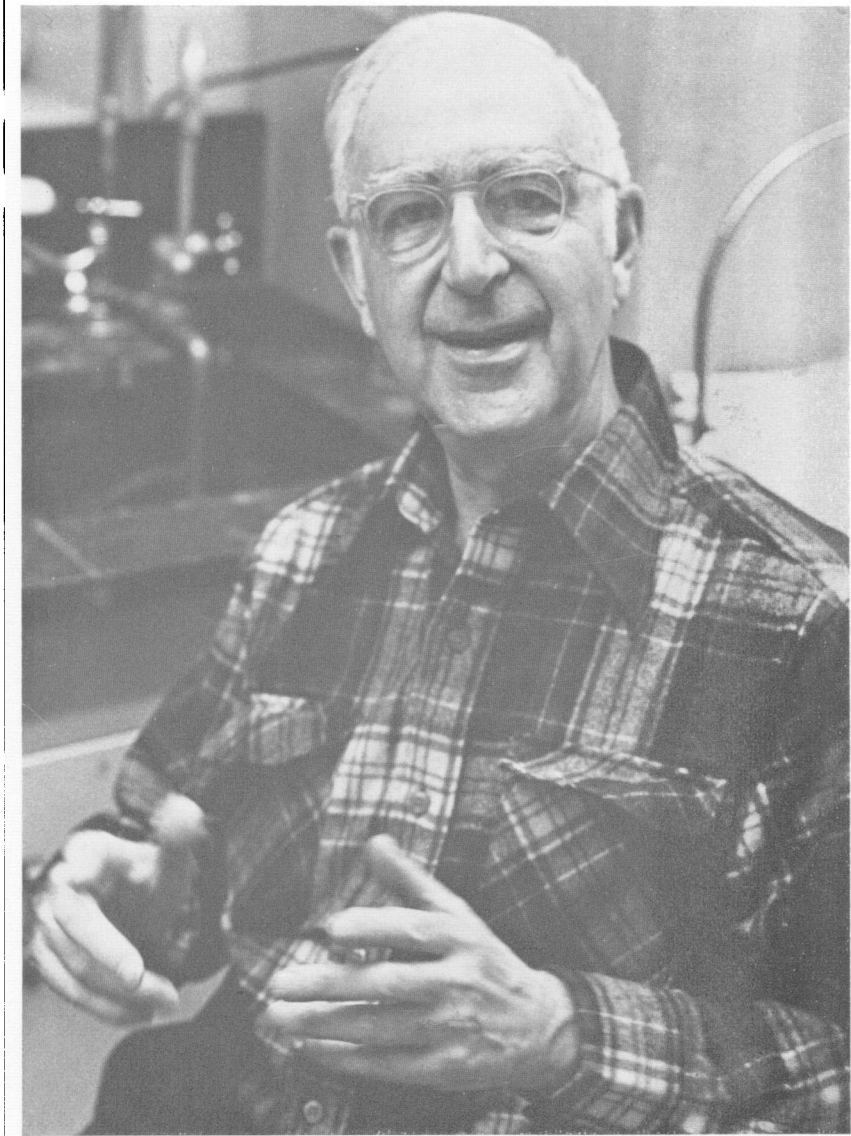
SYMBOLS Gene and mathematical symbols should generally be printed in italics. Please underline those to be italicized when they appear in the text and tables. Bold letters add to printing costs and should only be used where they are necessary to avoid confusion.

SPELLING should follow the Concise Oxford Dictionary.

REFERENCES should follow the normal usage in the journal. In the list of references at the end of the paper, *both titles of articles and names of periodicals* should be written out in full.

PROOFS Two sets of single-sided page proofs, together with the typescript, of each paper will be sent to the author. The printers' marked proof should be returned after correction to the Executive Editor, together with the typescript. Excessive alterations, other than corrections of printers' errors, may be disallowed or charged to the author. Correction should be made using the symbols in British Standard 1219: 1958, or its shortened version B.S. 1219C: 1958.

OFFPRINTS Fifty offprints of each paper, or short paper, are provided free of charge. Additional offprints may be ordered on the form sent out with proofs, provided this is returned within fourteen days of receipt.



TRACY M. SONNEBORN

(Facing p. 95)