

Imaging of Bio-Compatible Polymers in the Helium Ion Microscope

John Notte,* Larry Scipioni,* Lou Farkas,* and Ian Smith**

* Carl Zeiss SMT Inc, One Corporation Way, Peabody, MA 01960, USA

** University of Michigan School of Dentistry, 1105 N University, Ann Arbor, MI 48109, USA

Bio-compatible polymers are finding applications within the field of regenerative medicine because of their ability to support tissue growth [1]. In some applications, the polymer is in the form of a flat film substrate onto which cells and minerals are grown. In other cases, the polymer is pre-structured into a three dimensional “synthetic scaffold” structures in order to facilitate penetration of bio-fluids. [2] Some of the preferred materials include chitosan [3], PLLA (Poly L-lactide) and PLGA (Poly lactide/glycolide) [4]. The focus of this study is the imaging of bio-compatible polymers with the newly introduced helium ion microscope (HIM) [5].

In several respects, the helium ion beam interacts with the polymers in a manner that is very different from an electron beam. First, the helium ions generate mostly “type 1” secondary electrons (SE1) [5],[6] due to the very low rate of helium backscattering. The SE1 signal conveys the most surface-specific information, and the narrowest lateral width. Second, the helium ion microscope primarily produces a surface charge distribution, with relatively little sub-surface charging. For insulators, the residual surface charge can be balanced with a low energy electron flood gun. Using a conventional SEM, the electron beam deposits charge under the surface, where it is not readily dissipated or neutralized. Finally, the focused helium ion beam provides a much longer depth of focus, providing sharp image information deep within the three dimensional scaffolding structures.

[1] R. Zhang, et al., *Macromolecular Bioscience* 4, (2004) 100.

[2] Kaully, *Tissue Engineering, Part B*, 15(2), (2009) 159.

[3] Y. Qiu, *Journal of Biomedical Materials Research, Part A*, (2008) 772.

[4] M. Zhao, *Journal of Huazhong University of Sci. and Technol.*, 25(6) (2005) 687.

[5] L. Scipioni, et al., *J. Vac. Sci. Technol. B*, 27(6) (2009) 3250.

[6] J.I. Goldstein et al., *Scanning Electron Microscopy and X-ray Microanalysis*, Plenum, New York, 1992.

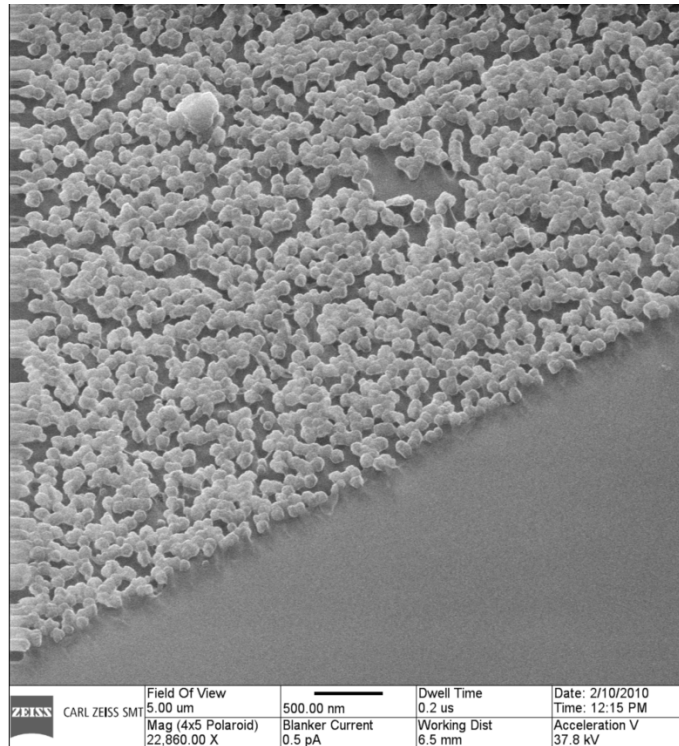


Figure 1: Helium ion microscope image of hydroxyapatite minerals (a bonelike mineral) grown on the PLLA substrate. The Field of view is 5 μ m.

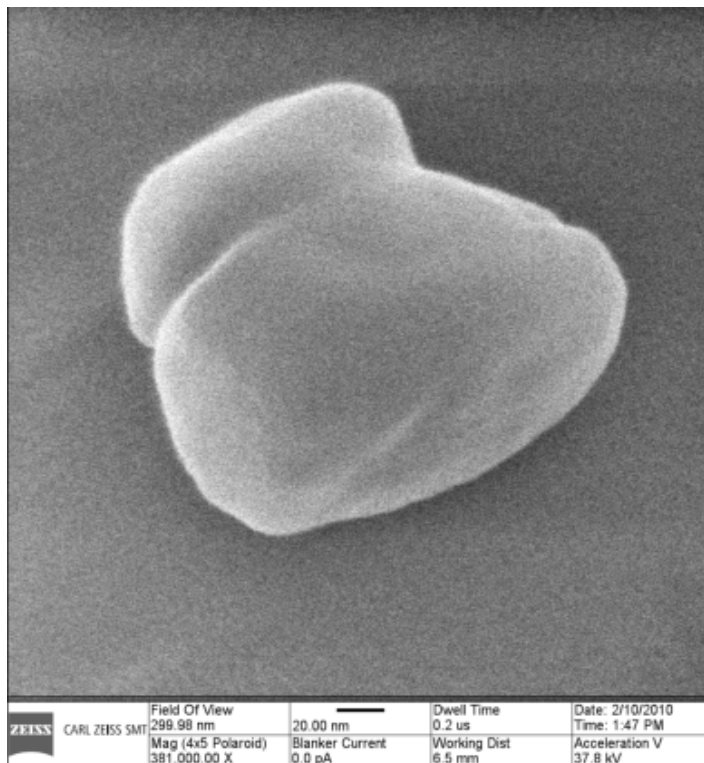


Figure 2: High magnification image of the hydroxyapatite mineral using the helium ion microscope. The field of view here is 300 nm.