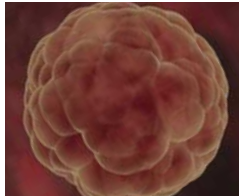


JOURNAL OF DEVELOPMENTAL ORIGINS OF HEALTH AND DISEASE



CONTENTS

IN THIS ISSUE

Michael G. Ross

REVIEWS

Early development and osteoporosis and bone health

E. M. Dennison, C. Cooper and Z. A. Cole

The developmental origins of sarcopenia: from epidemiological evidence to underlying mechanisms

A. A. Sayer, C. Stewart, H. Patel and C. Cooper

ORIGINAL ARTICLES

Searching for very early precursors of autism spectrum disorders: the Hamamatsu Birth Cohort for Mothers and Children (HBC)

K. J. Tsuchiya, K. Matsumoto, S. Suda, T. Miyachi, H. Itoh, N. Kanayama, K. Hirano, T. Ohzeki, N. Takei and the HBC Study Team

Birth cohort patterns suggest that infant survival predicts adult mortality rates

R. Meza, B. Pourbohloul and R. C. Brunham

Presented at the DOHaD 6th World Congress, Santiago, Chile

Altered hepatic insulin signalling in male offspring of obese mice

M. S. Martin-Gronert, D. S. Fernandez-Twinn, L. Poston and S. E. Ozanne

The utility of focus group interviews to capture dietary consumption data in the distant past: dairy consumption in Kazakhstan villages 50 years ago

M. Schwerin, S. Schonfeld, V. Drozdovitch, K. Akimzhanov, D. Aldyngurov, A. Bouville, C. Land, N. Luckyanov, K. Mabuchi, Y. Semenova, S. Simon, A. Tokaeva, Z. Zhumadilov and N. Potischman

BRIEF REPORT

Abdominal wall fat index in neonates: correlation with birth size

J. G. Alves, E. Silva, R. Didier, M. Bandeira and F. Bandeira

141

174

142

150

158

174

184

192

203

EDITORIAL POLICY

Journal of Developmental Origins of Health and Disease publishes leading research in the field of developmental origins of health and disease (DOHaD), focusing on how the environment during early animal and human development, and interactions between environmental and genetic factors, influence health in later life and risk of disease. It publishes original research articles, short communications and reviews, and plans regular themed issues, with guest editors; it is also a platform for conference/workshop reports, and for opinion, comment and interaction. The journal is multi-disciplinary, with contributions from basic scientists working in the fields of physiology, nutrition, endocrinology and metabolism, developmental biology, molecular biology and epigenetics, human biology and anthropology, evolutionary developmental biology, and clinicians, nutritionists, epidemiologists, social scientists, economists, public health specialists and policy makers.

SUBSCRIPTIONS

Journal of Developmental Origins of Health and Disease (print ISSN 2040-1744, electronic ISSN 2040-1752) is published bimonthly in February, April, June, August, October and December, 6 parts forming a volume, by Cambridge University Press, The Edinburgh Building, Shaftesbury Road, Cambridge CB2 8RU, UK/Cambridge University Press, 32 Avenue of the Americas, New York, NY 10013-2473, USA. The institutional subscription price (excluding VAT) including electronic access of Volume 1 (2010) is £250 net (US \$413 in the USA, Canada and Mexico). The electronic-only price available to institutional subscribers is £210 (US \$347 in USA, Canada and Mexico). The print-only price available to institutional subscribers is £230 (US \$380 in the USA, Canada and Mexico). Single parts are £42 (US \$70 in the USA, Canada and Mexico) plus postage. Back volumes are also available.

Orders, which must be accompanied by payment, may be sent to a bookseller, subscription agent or direct to the publisher: Cambridge University Press, The Edinburgh Building, Shaftesbury Road, Cambridge CB2 8RU, UK; or in the USA, Canada and Mexico: Cambridge University Press, Journals Fulfillment Department, 100 Brook Hill Drive, West Nyack, New York 10994-2133. EU subscribers (outside the UK) who are not registered for VAT should add VAT at their country's rate. VAT registered subscribers should provide their VAT registration number. Japanese prices for institutions are available from Kinokuniya Company Ltd, PO Box 55, Chitose, Tokyo 156, Japan. Prices include delivery by air.

DOHaD MEMBERS SUBSCRIPTION

Members of the International Society for Developmental Origins of Health and Disease (DOHaD) receive electronic access to the journal as part of their subscription to the Society (Standard membership rate: £45 / US\$70 / €50; Student membership rate: £20 / US\$30 / €22; Developing Country rate: see www.mrc.soton.ac.uk/dohad). For membership application details please visit www.mrc.soton.ac.uk/dohad. For additional print subscription members are asked to contact the Membership Secretary (dohad@mrc.soton.ac.uk) at DOHaD.

COPYRIGHT AND PERMISSIONS

This journal is registered with the Copyright Clearance Center, 222 Rosewood Drive, Danvers, MA 01923, USA. Organizations in the USA who are also registered with C.C.C. may therefore copy material (beyond the limits permitted by sections 107 and 108 of U.S. Copyright law) subject to payment to C.C.C. of the per-copy fee of \$25.00. This consent does not extend to multiple copying for promotional or commercial purposes. Code 2040-1744/2010 \$25.00.

ISI Tear Sheet Service, 3501 Market Street, Philadelphia, PA 19104, USA, is authorized to supply single copies of separate articles for private use only.

Organizations authorized by the Copyright Licensing Agency may also copy material subject to the usual conditions.

For all other use, permission should be sought from Cambridge or the American Branch of Cambridge University Press.

ADVERTISING

Advertising queries for all parts of the world except the USA, Canada and Mexico to the Journals Advertising Co-ordinator:

Rebecca Roberts, ad_sales@cambridge.org

Address enquiries in the USA, Mexico and Canada only to:

Lisa Pang, journals_advertising@cup.org

OTHER BUSINESS CORRESPONDENCE

All other business correspondence should be sent to Dan Edwards, Commissioning Editor: dedwards@cambridge.org

INSTRUCTIONS FOR CONTRIBUTORS

Full Instructions for Contributors are available for download from journals.cambridge.org/doh

INTERNET ACCESS

This journal is included in the Cambridge Journals Online service which can be found at journals.cambridge.org. For further information on other Press titles access cambridge.org

DISCLAIMER

The views expressed in this journal represent those of the authors only. In no way can they be construed to necessarily reflect the views of either the Editors, the Publishers, or the Society.

© Cambridge University Press and the International Society for Developmental Origins of Health and Disease 2010

Printed in the United Kingdom by Latimer Trend, Plymouth

This journal issue has been printed on FSC-certified paper and cover board. FSC is an independent, non-governmental, not-for-profit organization established to promote the responsible management of the world's forests. Please see www.fsc.org for information.

CAMBRIDGE

JOURNALS

Knowledge is no longer shelved

The *Cambridge Journals Digital Archive* contains more than 160 journals, more than 3 million pages and more than 8 million linked references. Knowledge is now more visible and more searchable than ever.



journals.cambridge.org/archives



CAMBRIDGE
UNIVERSITY PRESS

CAMBRIDGE

JOURNALS



GENETICS RESEARCH

Formerly published as *Genetical Research*

Genetics Research

is available online at
<http://journals.cambridge.org/grh>

**To subscribe contact
Customer Services**

in Cambridge:
Phone +44 (0)1223 326070
Fax +44 (0)1223 325150
Email journals@cambridge.org

in New York:
Phone +1 (845) 353 7500
Fax +1 (845) 353 4141
Email
subscriptions_newyork@cambridge.org

Senior Executive Editor

T. F. C. Mackay, North Carolina State University, USA

Executive Editors

D. J. Finnegan, University of Edinburgh, UK

W. G. Hill, University of Edinburgh, UK

Shizhong Xu, University of California, USA

Genetics Research is a key forum for original research on all aspects of genetics. Building on the success and history of its previous incarnation, *Genetical Research*, the journal has a publishing remit that provides comprehensive coverage of subjects vital to the field.

The breadth and quality of papers, reviews and book reviews make the journal invaluable to geneticists, evolutionary biologists, plant and animal breeders and molecular biologists.

**Price information is available at
<http://journals.cambridge.org/grh>**

Free email alerts

Keep up-to-date with new material – sign up at
<http://journals.cambridge.org/alerts>

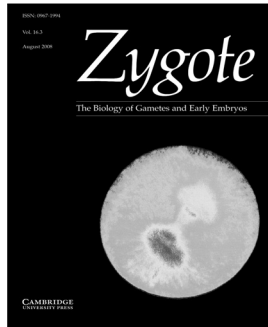
For free online content visit
<http://journals.cambridge.org/grh>



CAMBRIDGE
UNIVERSITY PRESS

CAMBRIDGE

JOURNALS



Zygote

The Biology of Gametes and Early Embryos

Zygote

is available online at:
<http://journals.cambridge.org/zyg>

To subscribe contact Customer Services

in Cambridge:

Phone +44 (0)1223 326070
Fax +44 (0)1223 325150
Email journals@cambridge.org

in New York:

Phone +1 (845) 353 7500
Fax +1 (845) 353 4141
Email
subscriptions_newyork@cambridge.org

Editor-in-Chief

Brian Dale, Centre for Reproductive Biology, Clinica Villa del Sole, Napoli, Italy

North American Editor

Jacques Cohen, Saint Barnabas Medical Center, USA

Asian Pacific Editor

Norio Suzuki, Hokkaido University, Japan

Zygote publishes original, high-quality papers, short communications, topical review articles and a Forum section, where controversial topics are discussed. Studies on plants, invertebrates, lower vertebrates, mammals and humans at the molecular and cellular levels are published, leading to a unique multidisciplinary publication.

Price information is available at:
<http://journals.cambridge.org/zyg>

Free email alerts

Keep up-to-date with new material – sign up at
<http://journals.cambridge.org/alerts>

For free online content visit:
<http://journals.cambridge.org/zyg>



CAMBRIDGE
UNIVERSITY PRESS