

The ATCA Seeing Monitor

Enno Middelberg, Robert J. Sault and Michael J. Kesteven

Publications of the Astronomical Society of Australia, 2006, 23, pp. 147–153

Figure 6 should be replaced with the following Figure

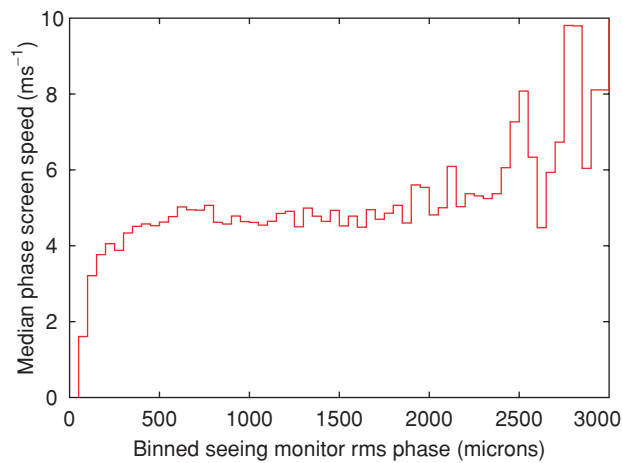


Figure 6 The speed of the phase screen as a function of seeing monitor rms phase. While the lowest and highest screen speeds are associated with very low and high rms values, respectively, the screen speed is otherwise largely independent of rms.