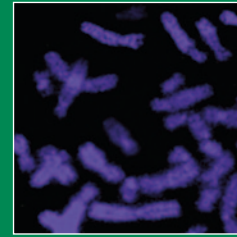


ISSN 1751-7311

JANUARY 2020

VOLUME 14 ISSUE 1



# animal

AN INTERNATIONAL JOURNAL OF ANIMAL BIOSCIENCE



animal

CAMBRIDGE  
UNIVERSITY PRESS

# ANIMAL

## Management Board

N. SCOLLAN (Chair); M. MITCHELL, H. SIMMINS, L. SINCLAIR (BSAS); P. CHEMINEAU, M. GAULY, A. ROSATI (EAAP); N. FRIGGENS, O. HOLOGNE, S. INGRAND (INRA)

## Editor-in-Chief

I. ORTIGUES-MARTY (France)

## Editorial Office

Email: questions@animal-journal.eu  
N. MIRAUX (Editorial Assistant),  
C. REIGATE (Technical Editor)

## Editorial Board

### Breeding and Genetics.

**Section Editor:** S. RODRIGUEZ-ZAS (USA),  
**Deputy Section Editor:** R. MRODE (UK)  
**Editors:** F. BRITO LOPES (Brazil),  
J. CASELLAS (Spain), J. GIBSON (Australia),  
D. GONZALEZ-PENA (USA),  
N. IBANEZ-ESCRICHE (Spain),  
J. SZYDA (Poland)

### Nutrition – Nonruminants.

**Section Editor:**  
P. MOUGHAN (New Zealand),  
**Deputy Section Editor:**  
D. TORRALLARDONA (Spain),  
**Editors:** R. ABDOLLAHI (New Zealand),  
P. BIKKER (The Netherlands),  
N. CORCIONIVOSCHI (Northern Ireland),  
W. GERRITS (The Netherlands),  
T. GIDENNE (France), D. JÓZEFIAK (Poland),  
E.-J. LOCK (Norway), J. MATTE (Canada),  
C. METGES (Germany),  
C. MONTOYA (New Zealand), J. MURRAY (UK),  
B. SILVA (Brazil), S. TESSERAUD (France),  
E. TIBALDI (Italy), J. VAN MILGEN (France),  
F. WANG (China), B. WILLIAMS (Australia)

### Nutrition – Ruminants.

**Section Editor:** P. VERCOE (Australia)  
**Deputy Section Editor:**  
R. GERVAIS (Canada)  
**Editors:** H. ARCHIMEDE (France),  
J. DE BOEVER (Belgium), V. FIEVEZ (Belgium),  
C. GIRARD (Canada), K. KALSCHUR (USA),  
D. MCNEILL (Australia),  
C. MCSWEENEY (Australia), J. NEWBOLD (UK),  
D. PACHECO (New Zealand),  
M. J. RANILLA (Spain),  
T. SCHONEWILLE (The Netherlands),  
K.-H. SÜDEKUM (Germany),  
I. TEIXEIRA (Brazil), R. XIANG (Australia),  
S. ZHAO (China)

### Physiology and Functional Biology

**Section Editor:**  
R. UNGERFELD (Uruguay),  
**Deputy Section Editor:**  
M. VESTERGAARD (Denmark),  
**Editors:** J.F. ASTURIANO (Spain),  
J. BRAMELD (UK), M. DUARTE (Brazil),  
J. GROSS (Switzerland), D. KENNY (Ireland),  
R.V. KNOX (USA), P. LACASSE (Canada),  
P. MERMILLOD (France), P. MOZDZIAK (USA),  
E. MURANI (Germany),  
L. PORTE-NERO (Australia), R.D. SAINZ (USA),  
J. SANTIAGO-MORENO (Spain),  
J. SHARP (Australia), M. WILKENS (Germany)

### Welfare, Behaviour and Health Management – Welfare and Behaviour

**Section Editor:** M. COCKRAM (Canada),  
**Deputy Section Editor:** B. L. NIELSEN (France),  
**Editors:** B. AMPE (Belgium),  
M. HERSKIN (Denmark),  
I. DE JONG (NL), E. MERLOT (France),  
H. STRYHN (Canada),  
P. T. THOMSEN (Denmark), F. TUYTTENS (Belgium), E. VON BORELL (Germany)

### Welfare, Behaviour and Health Management – Health Management

**Section Editor:** M. COCKRAM (Canada)  
**Deputy Section Editor:** C. ENEVOLDSEN (Denmark)  
**Editors:** N. BAREILLE (France),  
C. DUCROT (France), M. VAARST (Denmark)

### Livestock Farming Systems – Livestock Systems

**Section Editor:** A. DUNCAN (Ethiopia/UK),  
**Deputy Section Editor:** M. GAULY (Germany), **Editors:** A. BERNUES (Spain),  
M. FRASER (UK), J. HARTUNG (Germany),  
N. MIRAGLIA (Italy), S. OOSTING (The Netherlands),  
H. POULSEN (Denmark),  
A. DEL PRADO (Spain), J. T. SORENSEN (Denmark)

### Livestock Farming Systems – Precision Livestock Farming

**Section Editor:** I. HALACHMI (Israel)  
**Editors:** S. DRUYAN (Israel),  
A. HAEUSSERMANN (Germany),  
J. MASELYNE (Belgium),  
C. MORGAN-DAVIES (UK)

### Quality of Animal Products.

**Section Editor:** P. SCHMIDELY (France),  
**Deputy Section Editor:** B. LEBRET (France)  
**Editors:** A. BALDI (Italy), G. BEE (Switzerland),  
M. CAMPO (Spain), A. DESCALZO (Argentina),  
K. KLIEM (UK), L. PINOTTI (Italy),  
C. RYMER (UK)

### Aims and Scope of the journal

*animal* publishes the best, innovative and cutting-edge science that relates to animals (farmed or managed) used for animal production, and that is relevant to whole animal outcomes, and/or to animal management practices. Papers can be accepted from all species if they are in, or contribute knowledge to, animal production systems. *animal* is essential reading for all animal scientists, stakeholders and policy makers interested in agricultural, biomedical, veterinary and environmental sciences with expected impacts on Animal Production and Productivity, Animal Welfare, Animal Health, Food Security, Environment, Climate Change, Product Quality, Human Health and Nutrition, and Sustainability of Animal Agriculture and Livestock Systems. Impacts should be of international relevance.

*animal* aims to publish novel and original research papers, horizon-scanning reviews and critically informative opinion papers. Papers should consider animal responses, as well as lower or upper levels of understanding, with research spanning from genes to systems. Interactions between levels of approach are encouraged to account for the integrative nature of biological systems. The detailed scope of the journal can be found at [www.animal-journal.eu/scope.htm](http://www.animal-journal.eu/scope.htm)

### Submission of Manuscripts

All manuscripts must be submitted online via the website: <http://www.editorialmanager.com/animal/>  
Please consult the full instructions for authors at: <https://www.cambridge.org/core/journals/animal/information/instructions-contributors>

### Subscriptions

*Animal* (ISSN 1751-7311) is published monthly. The subscription price for institutions of Volume 14 (2020) which includes electronic access and delivery by air is £1210, €1483 (US \$2366 in the USA, Canada and Mexico); the electronic only price for institutions is £930, €1210 (US \$1867 in the USA, Canada and Mexico). Single parts are £116,

€142 (US \$227 in the USA, Canada and Mexico), plus postage.

Orders, which must be accompanied by payment, may be sent to a bookseller, subscription agent or direct to the publisher: Cambridge University Press, Journals Fulfillment Department, University Printing House, Shaftesbury Road, Cambridge CB2 8BS, UK; or in the USA, Canada and Mexico: Cambridge University Press, Journals Fulfillment Department, One Liberty Plaza, Floor 20, New York, NY 10006, USA. EU subscribers (outside the UK) who are not registered for VAT should add VAT at their country's rate. VAT registered subscribers should provide their VAT registration number. Japanese prices for institutions are available from Kinokuniya Company Ltd, P. O. Box 55, Chitose, Tokyo 156, Japan.

Copies of the journal for subscribers in the USA, Canada and Mexico are sent by air to New York to arrive with minimum delay. Periodicals postage paid at New York, NY, and at additional mailing offices. Postmaster: send address changes in the USA, Canada and Mexico to: *Animal*, Cambridge University Press, Journals Fulfillment, One Liberty Plaza, Floor 20, New York, NY 10006. Claims for missing issues should be made immediately on receipt of the subsequent issue.

### Advertising

Advertising queries for all parts of the world *except* the USA, Canada and Mexico to [ad\\_sales@cambridge.org](mailto:ad_sales@cambridge.org)

Address enquiries in the USA, Mexico and Canada only to: [USAdSales@cambridge.org](mailto:USAdSales@cambridge.org)

### Copying

This journal is registered with the Copyright Clearance Center, 222 Rosewood Drive, Danvers, MA 01923, USA ([www.copyright.com](http://www.copyright.com)). Organizations in the USA who are also registered with CCC may therefore copy material (beyond the limits permitted by sections 107 and 108 of US copyright law) subject to payment to CCC. This consent does not extend to multiple copying for promotional or commercial purposes.

*ISI Tear Sheet Service*, 3501 Market Street, Philadelphia, PA 19104, USA is authorized to supply single copies of separate articles for private use only.

Organizations authorized by the Copyright Licensing Agency may also copy material subject to the usual conditions. *For all other use*, permission should be sought from Cambridge or the American Branch of Cambridge University Press.

### Internet Access

This journal is included in the Cambridge Journals Online Service which can be found at [www.cambridge.org/journals](http://www.cambridge.org/journals)

### Front cover images

Mountain scene photograph courtesy of Julian Casasús. Other images © INRA Picture Library.

This journal issue has been printed on FSC-certified paper and cover board. FSC is an independent, non-governmental, not-for-profit organization established to promote the responsible management of the world's forests. Please see [www.fsc.org](http://www.fsc.org) for information.

Printed in the UK by Bell & Bain Ltd., Glasgow.  
© Animal Consortium 2020

# animal

AN INTERNATIONAL JOURNAL OF ANIMAL BIOSCIENCE

# Cambridge Core

The new  
home of  
academic  
content

[cambridge.org/core](https://www.cambridge.org/core)

Cambridge Core



CAMBRIDGE  
UNIVERSITY PRESS