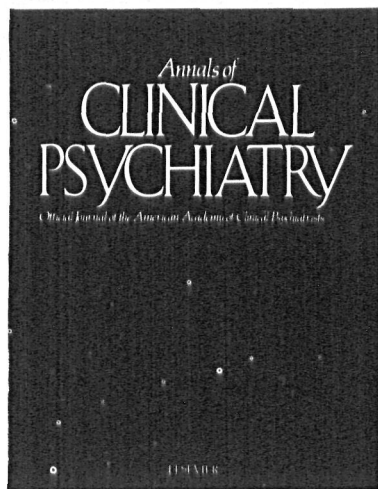


Presenting a Practical Focus on Clinical Psychiatry



EDITORIAL BOARD

Jeffrey T. Apter, MD
James G. Barbee, MD
Donald W. Black, MD
Philipp E. Bornstein, MD
C. William Briscoe, MD
John Clancy, MD
Mandel E. Cohen, MD
William Coryell, MD
Thomas J. Craig, MD,
MPH
Lynn A. Cunningham, MD
Joe H. Dorzab, MD
Irl Extein, MD
Richard C. Fowler, MD
Robert H. Gerner, MD
J. Christian Gillin, MD
Jaga Nath S. Glassman, MD
Donald W. Goodwin, MD
Larry Greenberg, MD
Samuel B. Guze, MD
Louis Hafken, MD
James A. Halikas, MD
Valerie F. Holmes, MD
Roger Kathol, MD
Lucy J. King, MD
Robert Kolodner, MD
Arnold L. Lieber, MD
Ronald L. Martin, MD

Joe Mendels, MD
Norman S. Miller, MD
James R. Morrison, MD
George B. Murray, MD
Russell Noyes, Jr., MD
Paul M. Packman, MD
Eli Robins, MD
William G. Ryan, MD
Marc Schuckit, MD
Duane G. Spiker, MD
James B. Smith, MD
Lee Spalt, MD
Vicente B. Tuason, MD
Elizabeth Weller, MD
Ronald A. Weller, MD
George Winokur, MD
William Yates, MD

Book Review Editor
Rodrigo A. Muñoz, MD

**Seminars in Treatment
Editor**
James R. Merikangas,
MD

**Clinical Applications
in Psychiatric
Research Editor**
Henry A. Nasrallah, MD

Send orders and sample copy requests to:

In North America
Elsevier Science Publishing Co., Inc.
P.O. Box 882, Madison Square Station
New York, New York 10159

outside North America
Elsevier Science Publishers
P.O. Box 211, 1000 AE Amsterdam
The Netherlands

*For faster service, call or fax today to
place your order:*

Tel. No.: (212) 633-3950

Fax No.: (212) 633-3990

Annals of CLINICAL PSYCHIATRY

*Official Journal of the American
Academy of Clinical Psychiatrists*

*Editor-in-Chief, Charles L. Rich, MD, Department of Psychiatry,
University of Southern Alabama, Mobile, Alabama, USA*

This journal is designed to provide an audience of practicing clinical psychiatrists with up-to-date information regarding the phenomenology and/or treatment of persons with psychiatric disorders. Although the emphasis is on results of controlled clinical studies, review articles that present new appraisals of pertinent clinical topics are also included. **Annals of Clinical Psychiatry** also publishes reviews of books that are relevant to the provision of psychiatric patient care. Letters about published original articles, either in support or offering meaningful debate, are reviewed and accepted if they suggest important insights.

Annals of Clinical Psychiatry is abstracted/indexed in: *Current Awareness in Biological Sciences; Excerpta Medica; Psychological Abstracts; Reference Update; and Innovations and Research.*

1993 Subscription Information

ISSN 1040-1237
Volume 5 (4 issues)
Personal Rate: \$81.00*
Institutional Rate: \$162.00
In-Training Rate: \$48.00†

Subscribers outside the U.S., please add \$23.00 for postage.

*Personal subscriptions must be paid with a personal check or credit card.

†In-training rates are valid for two years only.

All subscriptions begin with the first issue of the calendar year and are entered upon receipt of payment. Please allow 4-6 weeks for delivery of your first journal issue. Subscription rates valid until December 31, 1993.



Neuropsychopharmacology

NEUROPSYCHOPHARMACOLOGY



Official Publication of the American College of Neuropsychopharmacology

EDITOR-IN-CHIEF

J. Christian Gillin
University of California, San Diego
San Diego V.A. Medical Center
San Diego, California

ASSOCIATE EDITORS

George K. Aghajanian
Erminio Costa
Leo E. Hollister
Donald F. Klein
Herbert Meltzer
Dennis L. Murphy
Solomon H. Snyder

EDITORIAL BOARD

Huda Akil
James C. Ballenger
Lewis R. Baxter, Jr.
Floyd E. Bloom
Roland D. Ciaranello
Robert C. Cloninger
Joseph T. Covle
Everett H. Ellinwood, Jr.
Jean Endicott
Alan Frazer
Dorothy W. Gallager
Philip M. Groves
Florian Holsboer
John M. Kane
George F. Koob
Michael J. Kuhar
Robert H. Lenox
Roger E. Meyer
Charles B. Nemeroff
Charles P. O'Brien
John E. Overall
Robert M. Post
Carl Salzman
Goran Sedvall
Fridolin Sulzer
E.H. Uhlenhuth
David C. U'Prichard
Daniel R. Weinberger
R. Suzanne Zukin

MANAGING EDITOR
Beverly Robertson

BOOK REVIEW EDITOR
Roland D. Ciaranello

20% More
Pages in
1993

International and Interdisciplinary in Scope

This international journal, the official publication of the American College of Neuropsychopharmacology, focuses on clinical and basic science contributions to the field of neuropsychopharmacology. Areas of interest encompass the biologic and psychologic sciences relevant to the effects of centrally acting agents. Topics include the effects of these agents and the molecular, cellular, physiologic, and psychologic bases of their actions. Emphasis is given to reports of original research that integrate basic and clinical science. Selected review articles are also considered.

Because of the interdisciplinary nature of the field, **Neuropsychopharmacology** emphasizes the integration of basic and clinical science. Areas of investigation include:

- the biologic substrates of normal and pathological behavior
- the nature, etiology, and pathophysiology of neuropsychiatric disorders
- biologically relevant aspects of the epidemiology, diagnosis, and treatment of those disorders
- the basic mechanisms — molecular, cellular, physiologic, and psychologic — by which psychopharmacologic agents exert their effects

Neuropsychopharmacology is abstracted/indexed in: *Index Medicus (MEDLINE)*; *Chemical Abstracts*; *Science Citation Index*; *SCISEARCH*; *Current Contents/Life Sciences*; *Excerpta Medica*; *BIOSIS/Biological Abstracts*; *Psychological Abstracts*; and *Inpharma*.

1993 Subscription Information

ISSN 0893-133X

Volumes 8, 9 (8 issues)

Personal Rate: \$168.00*

Institutional Rate: \$335.00

In-Training Rate: \$65.00†

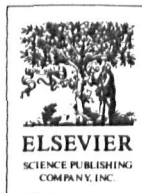
Subscribers outside the U.S., please add \$36.00 for postage and handling.

*Personal subscriptions must be paid with personal check or charge card.

†In-training rates are valid for 2 years only.

Note: All subscriptions begin with the first issue of the calendar year and are entered upon receipt of payment. Please allow 4-6 weeks for delivery of your first journal issue. Subscription rates valid until December 31, 1993.

Send orders and sample copy requests to:
in North America
Elsevier Science Publishing Co., Inc.
Box 882, Madison Square Station
New York, New York 10159
outside North America
Elsevier Science Publishers
P.O. Box 211, 1000 AE Amsterdam
The Netherlands



For faster service, call or fax today to place your order:

Tel. No.: (212) 633-3950

Fax No.: (212) 633-3990

11/92 XIXJ

Instructions to authors

Submission procedure. Submission of a paper to *European Psychiatry* is understood to imply that the data contained therein has not previously been published (except in abstract form) or is being considered for publication elsewhere.

There are no submission or page charges.

Only submissions in English will be considered. One original plus three copies (one set of photographs must be original prints) should be submitted to one of the following *five receiving centres* according to geographical location:

Pr C BALLUS
Unidad de Psiquiatria
Facultad de Medicina
Casanova, 143
08036 Barcelona, Spain
Fax: (34) 32 54 66 91

Pr M MAJ
Universita di Napoli
Ist di Psichiatria
Largo Madonna delle Grazie
80138 Napoli Italy
Fax: (39) 81 44 99 38

Pr JD GUELF
Clinique de la Faculté
100, rue de la Santé
75674 Paris Cedex 14 France
Fax: (33) 1 45 65 89 43

Pr CB PULL
Centre Hospitalier de Luxembourg
4, rue Barblé
1210 Luxembourg
Fax: (352) 45 87 62

Pr H HEIMANN
Goethestrasse 23
7400 Tübingen Germany
Fax: (49) 70 71 29 41 41

Pr M ACKENHEIL
Psychiatrische Klinik
und Poliklinik
der Universität München
Nussbaumstr 7
8000 München 2 Germany
Fax: (49) 89 51 60 47 41

Pr RM MURRAY
Institute of Psychiatry
De Crespigny Park
London SE5 8AF UK
Fax: (44) 71 70 35 796

Dr P BECH
Dept of Psychiatry
Frederiksborg General Hospital
DK-3400 Hillerød Denmark
Fax: (45) 48 24 20 16

Deputy Editors

Dr P BOYER
Inserm, Clinique des maladies
mentales et de l'encéphale
100, rue de la Santé
75014 Paris
Fax: (33) 1 45 65 89 43

Dr Y LECRUBIER
Hôpital de la Salpêtrière
Pavillon Clérambault U 302
47, boulevard de l'Hôpital
75651 Paris Cedex 13
Fax: (33) 1 44 23 92 49

Submissions from Eastern Europe should, for the time being, be sent to the Deputy Editors.

Submissions from non European countries can be sent to any of the preceding editors.

Papers that do not conform to the general criteria for publication in *European Psychiatry* will be returned immediately to authors to avoid unnecessary delay in submission elsewhere.

Organisation of the manuscript. Manuscripts should be typewritten/printed double-spaced with wide margins throughout. Title page, abstracts, tables, legends to figures and reference list should each be provided on separate sheets of paper. The title page should include: the title, the name(s) and affiliation(s) of the author(s), an address for correspondence, and telephone/fax numbers for editorial queries. All original and review articles should include an abstract (a single paragraph of no more than 150 words) and 3-6 key words for abstracting and indexing purposes. For original and review articles, the text should be ordered under the following headings: Introduction, Subjects and methods/Materials and methods, Results, Discussion (may be combined with Results), Conclusion, Acknowledgments (when appropriate), References.

• **Short communications** should not exceed 1 500 words or the equivalent space including figures and tables, with abstracts of no more than 50 words.

• **Rapid communications** should not exceed 1 000 words or the equivalent space. The summary should consist of no more than 50 words. Only one table and one figure are accepted. Figures (glossy) should be submitted in a form suitable for direct reproduction. References should be limited to a maximum of 10 and are in addition to the 1 000 words. To ensure rapid publication, articles must meet a high standard, both in terms of scientific content and presentation. Following acceptance of an article in this category, no further modifications by the author will be allowed. Rapid communications are considered to be articles comprising preliminary but consistent results and will be published within three months following acceptance.

• **Letters to the Editor** (maximum of 500 words) will be processed rapidly and therefore should be sent to the Deputy Editors. To ensure speedy publication, please adhere strictly to the general instructions on style and arrangement; provide only figures and tables suitable for direct reproduction.

• **Illustrations.** Photographs should be presented as glossy prints with high contrast. Figures should be completely and consistently lettered, the size of the lettering being appropriate to that of the illustration, taking into account the necessary reduction in size. Illustrations should be designed to fit either a single column or the full text width. Each illustration should be clearly marked on the reverse side with the name of the author(s), the number of the illustration and its orientation (top).

Colour figures will be included subject to the author's agreement to defray part of the cost.

• **Tables.** All tables must be cited in the text, have titles and be numbered consecutively with roman numerals. Only horizontal lines should be included, and kept to a minimum.

• **References** (Harvard System) Authors are responsible for the accuracy of the references. Only published articles and those in press (the journal should be stated) may be included; unpublished results and personal communications should be cited as such in the text. In the text, a reference should be cited by author and date; when there are more than two authors, state the first author's name followed by 'et al'. References should be arranged alphabetically at the end of the paper and include, in the following order: all authors (surnames followed by initials), year in parentheses, journal title (abbreviated according to the Serial Sources for the Biosis Data Base), volume number, and inclusive page numbers.

For a book, the editor's names, book title, publisher and publisher's location should appear before volume and page numbers.

Examples:

Journal article

Lão H, Rein W, Souche A, Dufour H, Guelfi JD, Malka R, Olié JP (1990) Psychopathological and sociodemographic characteristics of 1231 depressed patients with and without co-existing alcoholism. *Psychiatr & Psychobiol* 5, 249-256

Book

Takahashi R, R Flor-Henry P, Gruzelier J, Niwa SI (1987) *Dynamics, Laterality and Psychopathology*. Elsevier, Amsterdam

Chapter in a book

Pinard G, Tetreault L (1974) Concerning semantic problems in psychological evaluation. In: *Psychological Measurements in Psychopharmacology. Modern Problems in Pharmacopsychiatry*, Vol 7 (Pichot P, ed) Karger, Basel, 8-22

• **Nomenclature.** Metric units must be used throughout, laboratory units must be followed by SI units. The generic name of a drug should be used unless the specific trade name of the drug is directly relevant to the discussion.

• **Proofs and reprints.** Proofs will be sent to the author indicated on the title page; no changes to the original manuscript will be allowed at this stage. They should be carefully corrected and returned (preferably by fax) to the publisher within 48 hours after reception. If this period is exceeded, the galleys will be proofread by the editorial staff of the publishing house only and printed without the author's corrections.

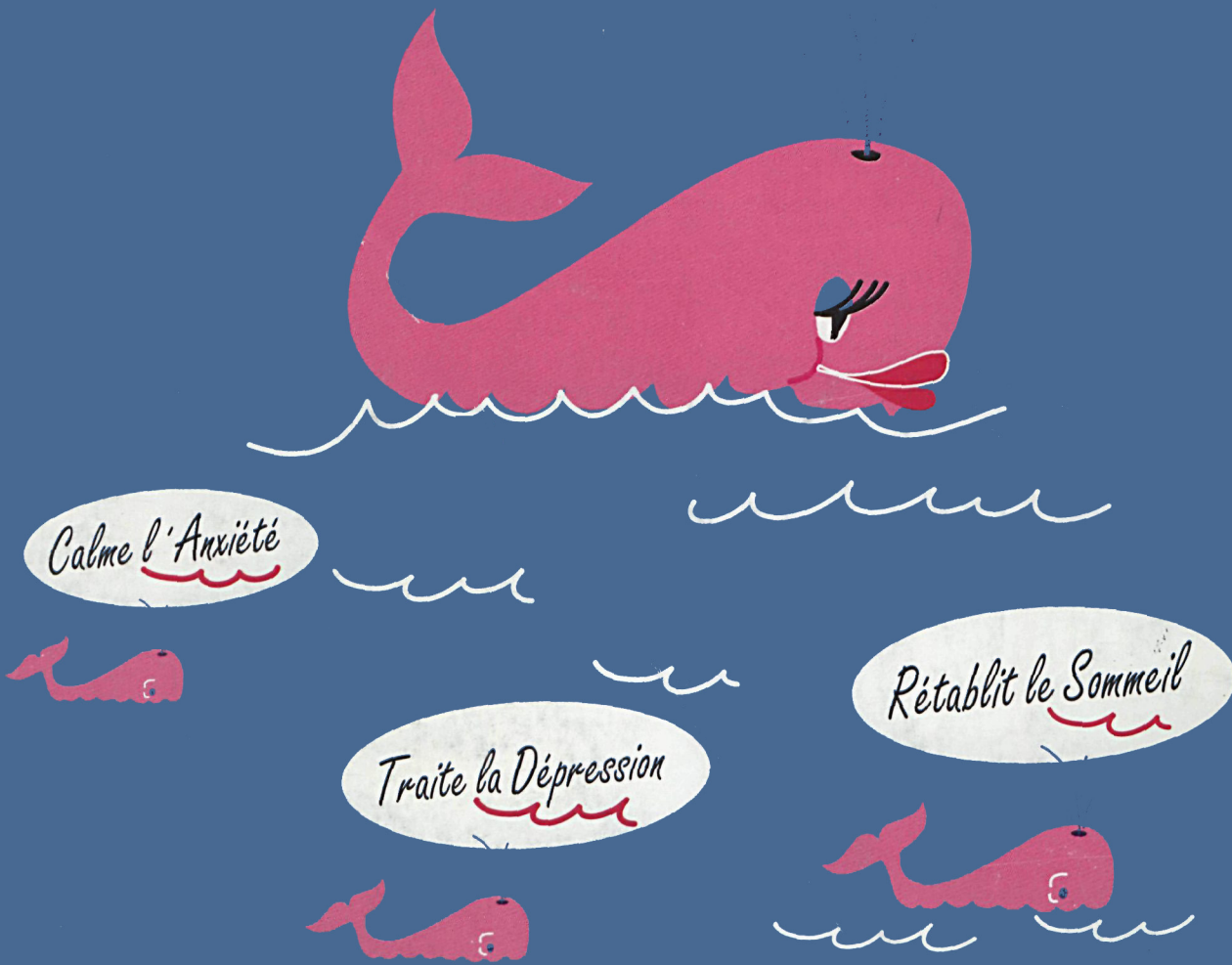
25 free reprints are supplied per contribution. Additional reprints may be ordered at the prices quoted on the order form sent to the corresponding author.

• **Copyright.** As soon as the article is published, the author is considered to have transferred his rights to the publisher. Requests for reproduction should be sent to the latter.

Quitaxon

DOXEPINE

le Tricyclique du bien-être



Formes et présentations : comprimés pelliculaires sécables à 10 mg (boîte de 40) et de 50 mg (boîte de 20), solution buvable en gouttes de 10 mg/ml (flacon de 30 ml) et solution injectable à 25 mg/2 ml (boîte de 10 ampoules).

Propriétés : anti-dépresseur atypique qui agit également comme sédatif anxiolytique et sédatif. **Sort du médicament :** la doxépine est bien absorbée par voie orale et elle est rapidement détectable dans le sang (pic à 1 heure).

Indications : comprimés à 50 mg et solution injectable : états dépressifs. Comprimés à 10 mg et solution buvable : états anxio-dépressifs et états dépressifs.

Contre indications : association avec IMAO (risque de délirium délirant), 15 jours après l'arrêt d'un traitement de ce type de médicament. Risques de rétention urinaire liés à des troubles urologiques. Glaucome par fermeture de l'angle. Insuffisance rénale ou hépatique.

Contre indications relatives : alcool, médicaments neuroleptiques (cf. interactions médicamenteuses). **Précautions d'emploi :** l'alcool est totalement déconseillé. Prudence en cas d'hypertrophie prostatique, en cas d'hypertension artérielle, pendant des maladies cardiaques. Également prudence chez les sujets épileptiques. **Grossesse :** le risque fœtal est, s'il existe, semble faible, il semble raisonnable d'essayer de limiter les durées de traitement pendant la grossesse, si possible il est souhaitable de discuter les psychotropes en fin de grossesse en raison des effets tératogènes des antidépresseurs. Il semble juste d'observer une période de surveillance de l'enfant pendant et après la grossesse. L'allaitement est déconseillé pendant la durée du traitement. **Interactions médicamenteuses :** Association contre indiquée : IMAO non sélectifs (risque de collapsus orthostatique, hypertension, convulsions, etc.). **Associations déconseillées :** alcool (augmentation par l'alcool de l'effet sédatif), éphédrine ou Adrénaline, l'éthopropazine ou Nordéfradine (risque d'HTA paroxystique), l'atropine, benzodiazépine. Antidépresseurs (risque de surpression et d'hypotension orthostatique). Atropine et autres substances anticholinergiques, la plupart des antihistaminiques H1, les antiparkinsoniens, anticholinergiques, antipsychotiques, benzodiazépine, cholinergiques et apparentés, hypnotiques, dérivés morphiniques, neuroleptiques. Il faut être vigilant avec les effets anticholinergiques, particulièrement chez les personnes âgées, les patients atteints de troubles cardiaques, diabétiques, etc. **Mode d'emploi et posologie :** en fonction de l'indication (état anxio-dépressif, la psychologie et la forme employées sont indiquées). Pour une information complète voir le Vidal. **Surdosage :** faire évacuer le produit ingéré et faire hospitaliser immédiatement le malade. (Vidal L.A.M.M. 2 (1994) comprimés 50 mg : 333 242 4 (1994) comprimés 10 mg : 312 597 2 (1993) solution buvable en gouttes : 312 602 6 (1993) solution injectable).