

Semantic Memory Activation After Acute Exercise in Healthy Older Adults

Junyeon Won,¹ Alfonso J. Alfini,² Lauren R. Weiss,^{1,3} Corey S. Michelson,¹ Daniel D. Callow,¹ Sushant M. Ranadive,¹ Rodolphe J. Gentili,^{1,3} AND J. Carson Smith^{1,3}

¹Department of Kinesiology, University of Maryland, College Park, Maryland

²Department of Mental Health, Johns Hopkins Bloomberg School of Public Health, Baltimore, Maryland

³Program in Neuroscience and Cognitive Science, University of Maryland, College Park, Maryland

(RECEIVED September 24, 2018; FINAL REVISION December 17, 2018; ACCEPTED January 15, 2019; FIRST PUBLISHED ONLINE 25 April 2019)

Abstract

Objectives: A growing body of research suggests that regular participation in long-term exercise is associated with enhanced cognitive function. However, less is known about the beneficial effects of acute exercise on semantic memory. This study investigated brain activation during a semantic memory task after a single session of exercise in healthy older adults using functional magnetic resonance imaging (fMRI). **Methods:** Using a within-subjects counterbalanced design, 26 participants (ages, 55–85 years) underwent two experimental visits on separate days. During each visit, participants engaged in 30 min of rest or stationary cycling exercise immediately before performing a Famous and Non-Famous name discrimination task during fMRI scanning. **Results:** Acute exercise was associated with significantly greater semantic memory activation (Famous > Non-Famous) in the middle frontal, inferior temporal, middle temporal, and fusiform gyri. A planned comparison additionally showed significantly greater activation in the bilateral hippocampus after exercise compared to rest. These effects were confined to correct trials, and as expected, there were no differences between conditions in response time or accuracy. **Conclusions:** Greater brain activation following a single session of exercise suggests that exercise may increase neural processes underlying semantic memory activation in healthy older adults. These effects were localized to the known semantic memory network, and thus do not appear to reflect a general or widespread increase in brain blood flow. Coupled with our prior exercise training effects on semantic memory-related activation, these data suggest the acute increase in neural activation after exercise may provide a stimulus for adaptation over repeated exercise sessions. (*JINS*, 2019, 25, 557–568)

Keywords: Exercise, Aging, fMRI, Semantic memory, Hippocampus, Older adults, Brain health, Physical activity

INTRODUCTION

With aging comes declines in cognitive ability (Raz et al., 2005). Specifically, age-related decline in memory is the most pronounced. Age-related memory decline is known to result from exponential neuronal loss and impaired replacement of the lost cells (Kuhn, Dickinson-Anson, & Gage, 1996; Morrison & Hof, 1997). Additionally, reduction in synaptic contacts plays a role in age-related memory loss (Detoleto-Morrell, Geinisman, & Morrell, 1988; Foster, 1999). Memory difficulties among older adults can dramatically debilitate their ability to perform daily living tasks, such as comprehending medication labels, using emergency telephone information, understanding transportation schedules,

and driving (Leirer, Morrow, Pariante, & Sheikh, 1988; Vance, Wadley, Ball, Roenker, & Rizzo, 2005).

Exercise is a viable intervention for maintaining quality of life in older adults (Rejeski & Mihalko, 2001). Exercise has been shown to enhance brain health, improve cognitive function, and delay the onset of cognitive decline in elders (Cotman & Engesser-Cesar, 2002). However, less is known about the short-term effects of single sessions of exercise on indices of brain function during memory retrieval. These effects presumably accumulate over time to produce adaptations that benefit cognitive function. For example, in animal models exercise enhances neurogenesis, brain plasticity, and hippocampal-dependent learning and memory, suggesting it serves as a potential therapeutic tool for preserving and improving memory.

Indeed, converging lines of evidence in both rodents (Gómez-Pinilla, Ying, Roy, Molteni, & Edgerton, 2002;

Correspondence and reprint requests to: J. Carson Smith, Department of Kinesiology, University of Maryland, College Park, MD, 20742. E-mail: carson@umd.edu

Pereira et al., 2007; Russo-Neustadt, Alejandre, Garcia, Ivy, & Chen, 2004) and humans (Erickson et al., 2011; Nouchi et al., 2014; Suwabe et al., 2018; Vaynman & Gomez-Pinilla, 2006; Weinberg, Hasni, Shinohara, & Duarte, 2014) have documented that increased leisure-time physical activity is associated with enhanced memory function. Among healthy younger adults, it is increasingly recognized that an acute bout of exercise can improve memory consolidation (Segal, Cotman, & Cahill, 2012), short-term memory (Etnier et al., 2016), and long-term memory (Winter et al., 2007). However, whether these effects occur in healthy older adults has not been clearly established.

Moreover, although the effects of acute exercise on memory have been examined extensively in younger adults, most studies of this nature have focused on perceptual or short-term memory paradigms and episodic memory (Nouchi et al., 2014; Ruscheweyh et al., 2011; Weinberg et al., 2014), while the association between exercise and semantic memory has received little attention. Given that the inability to remember familiar names is the most common memory complaint among older adults (Jonker, Geerlings, & Schmand, 2000), investigating semantic memory may serve as a useful predictor of neurodegenerative disease. Furthermore, findings suggest that the semantic memory system is vulnerable to the earliest stages of cognitive decline (Henry, Crawford, & Phillips, 2004; Lonie et al., 2009). Therefore, research examining the impact of exercise on semantic memory is of great importance for understanding its therapeutic potential.

Beyond behavioral studies, recent advances in neuroimaging techniques, particularly fMRI, offer neurophysiological perspectives into the link between exercise and memory. Our research team has shown that two groups of older adults (cognitively intact and those with mild cognitive impairment) exhibit a significant reduction in semantic memory activation intensity after completing 12 weeks of moderate intensity treadmill walking relative to baseline. This study suggests that exercise may improve neural efficiency during semantic memory retrieval in mild cognitive impairment (MCI) and cognitively intact older adults and may lead to improvements in cognitive function (Smith et al., 2013).

Despite this evidence, our understanding remains limited regarding the effects of acute exercise on semantic memory activation in older adults. To our best knowledge, no study has observed semantic memory-related fMRI blood oxygen level-dependent (BOLD) activation immediately following a single bout of exercise in older adults. Considering that single bouts of exercise are the building blocks of chronic exercise (Basso & Suzuki, 2017), understanding the changes induced by acute exercise may provide novel insight into the association between exercise and memory. Therefore, this study investigated the effect of acute exercise on BOLD semantic memory activation patterns using task-activated fMRI in 26 healthy older adults. Based on previous evidence (Smith et al., 2013), it was hypothesized that acute exercise would reduce the magnitude and spatial extent of semantic memory-related functional activation compared to a rest condition.

METHODS

Participants

Thirty-two physically active, right-handed older adults (ages, 55–85 years) were recruited to participate in this study. Participants were pre-screened using a structured interview questionnaire, which included items specific to MRI safety (i.e., regarding the presence of metal implants, pacemakers, aneurysm clips, and other potential safety hazards) to ensure they could safely participate in the MRI scan. Participants were excluded if they reported a history of stroke, diabetes, high blood pressure, neurological disease, major psychiatric disturbance, substance abuse, or were taking psychoactive prescriptive medications. Before the first MRI scan, participants who were eligible attended the pre-screening session where they provided informed consent approved by the Institutional Review Board at The University of Maryland. They also completed the 7-day physical activity recall (Sallis et al., 1985) and the Mini-Mental State Examination (MMSE) (Folstein, Folstein, & McHugh, 1975), a 30-point questionnaire used to screen for global cognitive impairment and dementia.

Participants were instructed to maintain normal eating habits and to refrain from eating for 4 hours, drinking alcohol for 12 hours, and from drinking caffeine for 4 hr before participation each day (Ferré & O'Brien, 2011). Participants who completed all experimental sessions were paid for their participation. This study was conducted according to the Helsinki Declaration of 1975 (World Medical Association, 2008). Demographic, physical, and cognitive data for all participants are provided in Table 1. Details of the recruitment process and inclusion in the final sample are illustrated in Figure 1.

Exercise and Rest Conditions

Using a within-subject design, the order of the experimental conditions (exercise and rest) was counterbalanced across participants. During the exercise condition, participants completed 30 min of continuous cycling on a Monark cycle ergometer (Varberg, Sweden) located outside of the fMRI scanner. The rationale behind our choice of exercise intervention was based on a previous finding indicating that moderate exercise enhances cognition to a greater degree than light or high intensity exercise (Kamijo, Nishihira, Higashiura, & Kuroiwa, 2007). Before each condition, participants were fitted with a heart rate (HR) monitor (Polar Electro, Kempele, Finland) and standardized instructions regarding the use of the Borg 6–20 Rating of Perceived Exertion (RPE) Scale (Borg, 1970) were provided before adjusting the seat height.

A 5-min warm-up session was then administered before the 20-min moderate-intensity exercise session. During the exercise session, participants were instructed to self-select their workload to meet an intensity corresponding to an RPE of 15 (associated with the verbal anchor “Hard”). Pedal

Table 1. Demographic information, physical characteristics, and cognitive function of study participants

		Total sample (<i>n</i> = 26)	
		Mean	SD
Demographics			
	Age (years)	65.9	7.2
	Sex (<i>n</i> ,%)		
	Male	6 (23.1%)	
	Female	20 (76.9%)	
	Race (<i>n</i> ,%)		
	White	20 (77.0%)	
	Black	2 (7.7%)	
	Hispanic	2 (7.7%)	
	Asian	2 (7.7%)	
	Education (<i>n</i> ,%)		
	≤ College	9 (34.6%)	
	≥ Graduate	17 (65.4%)	
Physical characteristics			
	Height (cm)	166.5	8.5
	Weight (kg)	73.6	14.1
	BMI (kg/m ²)	26.1	4.3
	HR (BPM)		
	Age-predicted HR _{max}	154.0	7.2
	HR _{resting}	64.8	6.4
7-Day Physical Activity Recall Score			
	kJ/kg/day	135.7	17.3
Cognitive Function			
	MMSE	29.3	1.0

Note: SD, standard deviation; BMI, body mass index; MMSE, Mini-Mental Status Examination; HR, heart rate; BPM, beats per minute; Age-predicted HR_{max}, Age-predicted maximal heart rate; HR_{resting}, resting heart rate; 7-Day Physical Activity Recall Score, based on time spent in light, moderate, hard, and very hard activities during the seven days before enrollment in the study; kJ, kilojoules; kg, kilograms.

cadence was maintained between 60 and 80 rpm while participants freely adjusted resistance. Immediately following moderate-intensity exercise, a 5-min cool-down was completed before participants were escorted to the MRI scanner. To measure exercise intensity, RPE and HR were recorded every 5 min. During the rest condition, participants were seated for 30 min while HR and RPE were measured every 5 min.

fMRI Acquisition

Whole-brain, event-related fMRI was conducted on a Siemens 3.0 Tesla MR scanner (Magnetom Trio Tim Syngo, Munich, Germany). A 32-channel head coil was used for radio frequency transmission and reception. Foam padding was positioned within the head coil to minimize head movement within the coil. A high-resolution T1-weighted anatomical image was acquired for co-registration with the following sequence parameters: Magnetization Prepared Rapid Acquisition of Gradient Echo (MPRAGE), matrix = 256, field of view (FOV) = 230 mm, voxel size = 0.9 × 0.9 × 0.9 mm, slices = 192 (sagittal plane, acquired right to left), slice thickness = 0.9 mm, repetition time (TR) = 1900 ms, echo time (TE) = 2.32 ms, inversion time (TI) = 900 ms, flip angle = 9°, and sequence duration = 4:26 min.

The Famous Names Task (FNT) event-related data were acquired using the following sequence parameters:

single-shot gradient echo planar images, matrix = 64, FOV = 192 mm, voxel size = 3.0 × 3.0 × 3.0 mm, slices = 36, slice thickness = 3.0 mm, TR/TE = 2000/24 ms, volumes = 175, flip angle = 70°, bandwidth = 2232 Hz/Px, multi-slice mode = Interleaved, and sequence duration = 5:56 min. The MPRAGE and FNT sequences began approximately 15 and 35 min after the completion of the exercise or rest session, respectively.

fMRI Task

Semantic memory activation was assessed using the FNT, presented electronically using E-Prime 2.0 (Psychology Software Tools, Pittsburgh, PA). The FNT was administered during fMRI acquisition following the exercise or rest condition. Participants were instructed to respond as accurately as possible to identify a set of Famous name stimuli. The fMRI task stimuli consisted of 30 names of easily recognized prominent entertainers, politicians, or sports figures obtained through magazines, trivia books, and the Internet (e.g., Ringo Star) and 30 names of non-famous individuals chosen from a local phone book (Nielson et al., 2006). Only names with a high rate of identification (>90% correct for targets and foils) were selected from an original pool of 784 names (Douville et al., 2005).

Stimuli were presented for 4 s each with randomly interspersed 4-s fixation intervals at an overall 2:1 (names:fixation) ratio. Fixation intervals consisted of a single centrally placed fixation crosshair. Participants were instructed to make a right index finger key press for Famous names and a right middle finger key press for Non-Famous names. Both accuracy (% correct) and response time (ms) were recorded. Upon arrival, participants underwent a practice session, which included 10 trials and lasted 1:15 min. The practice version was always different from the version used in the scanner. Moreover, two versions of the task, comprising unique sets of Famous and Non-Famous names, were counterbalanced across experimental sessions.

fMRI Analysis

Preprocessing

Functional images were processed using the Analysis of Functional NeuroImages (AFNI) software package (Cox, 1996). Using AFNI's Dimon program, the DICOM image files were converted into 3D space. For each image time series, the scanner automatically discarded the first three TRs and,

subsequently, two additional TRs were excluded to avoid magnetization disequilibrium. Slices within each volume of the time series were then time-shifted to the beginning of the TR. The time series were spatially registered to minimize the effect of head motion and aligned to the participant's high-resolution anatomical image. The images then were transformed into standard stereotaxic space (AFNI's MNI152_T1_2009c template) and spatially smoothed using a 4-mm Gaussian full-width half-maximum kernel. Incorrect trials were removed from the analysis. Then, regressors of interest for the presentation of Famous and Non-Famous name stimuli were created by convolving a square wave (duration (d) = 4 s; amplitude (p) = 1) with the default canonical hemodynamic response function in AFNI, and the Famous minus Non-Famous contrast was computed. The resulting parametric maps for each participant were submitted to the group analysis.

Whole brain voxel-wise analysis

Semantic memory-related activation maps (Famous minus Non-Famous) were created separately for the exercise (see Supplementary Figure S1) and rest (see Supplementary Figure S2)

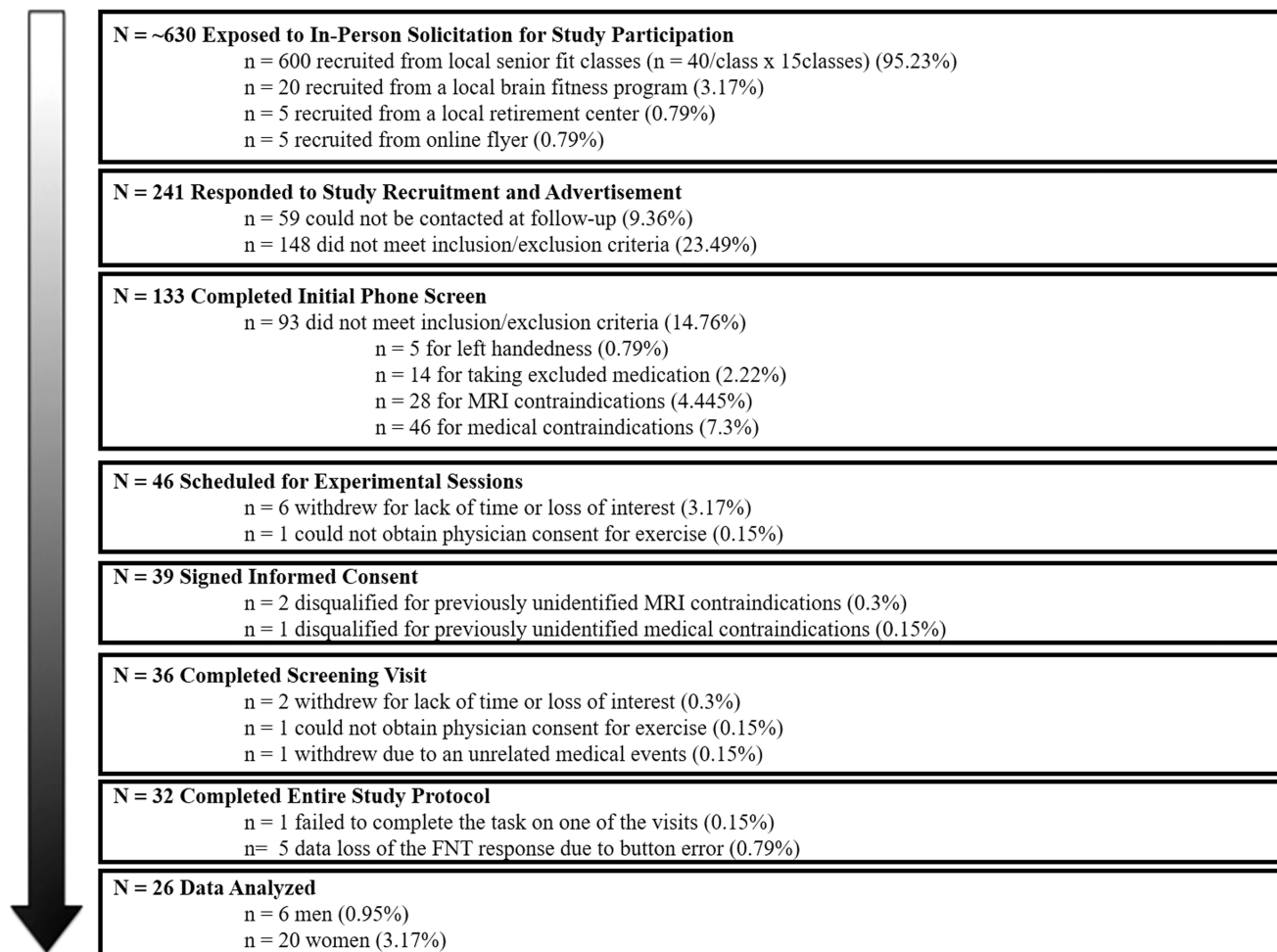


Fig. 1. Flowchart of participant recruitment, eligibility screening, enrollment, withdrawals, and the final sample included in the fMRI analysis ($n = 26$).

conditions to illustrate the intensity and spatial location of activation after each condition. AFNI's 3dClustSim was used to control the whole brain family-wise error rate (FWER) at $p < .01$ by setting a voxel-wise probability threshold of $p < .001$ and minimum cluster size $k \geq 26$ (NN = 1, bi-sided) (Eklund, Nichols, & Knutsson, 2015). Semantic memory-related activation was defined where the Famous minus Non-Famous contrast was significantly different from zero at FWER corrected $p < .01$ (Smith, Nielson, Woodard, Seidenberg, Durgerian, et al., 2011; Woodard et al., 2009).

Using AFNI's 3dcalc function, the activation maps for each condition were combined to create a disjunction ("OR") mask (see Figure 2) by conjoining activated regions identified in the voxel-wise analysis for the exercise and rest conditions. Any significantly activated clusters in each condition, based on the Famous minus Non-Famous contrast, contributed to the disjunction map. Voxels identified in the disjunction map were applied as a mask to each participant's individual data, and the mean activation intensities (β coefficients) for each participant within each distinct region were

extracted for both the exercise and rest conditions. Finally, a one-way repeated-measures analysis of variance (ANOVA) was conducted to compare the activation intensity between the exercise and rest conditions in each region, with statistical significance determined at $p < .05$.

Hippocampal region of interest analysis

Using an anatomically defined region of interest, we examined the effect of acute exercise on semantic memory-related activation of the bilateral hippocampus. AFNI's MNI reference dataset (MNI152_T1_2009c) was processed with FreeSurfer's automated pipeline for generating cortical and subcortical volumetric reconstructions (Fischl, 2012). Using the Desikan-Killiany aparc+aseg segmentation, a structurally defined bilateral hippocampal mask was created based on the resulting FreeSurfer parcellation using AFNI's 3dcalc. Using this mask, the mean β coefficients were extracted from each participant's parametric maps for the exercise and rest conditions based on a whole brain FWER corrected threshold of $p < .01$ (voxel-wise probability threshold of $p < .01$ and minimum clusters of size

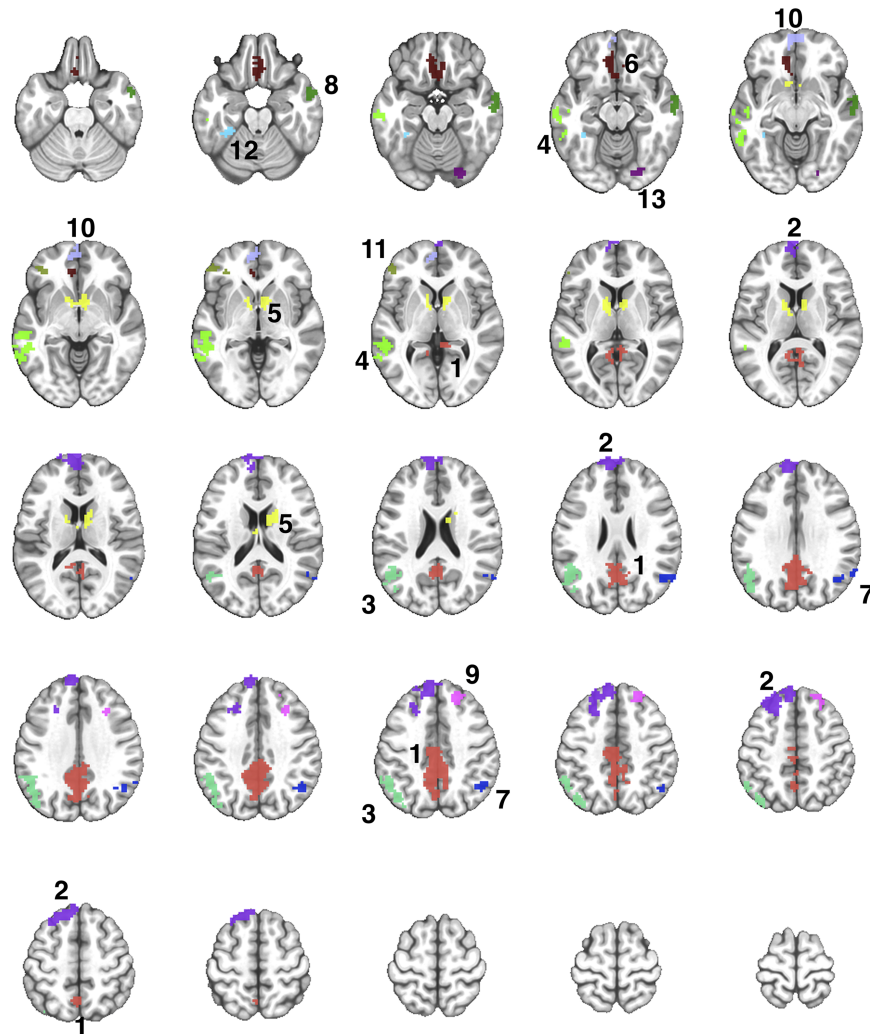


Fig. 2. A montage of axial slices showing the 13 regions derived from a disjunction (OR) mask activated in both Exercise and Rest conditions. The numerical labels correspond to the region numbers shown in Table 3. The colors only denote the spatial location of the distinct regions, which may appear in multiple slices of the montage.

$k \geq 426$ (NN = 1, bi-sided), and the difference between exercise and rest was determined using a one-way repeated measures ANOVA ($p < .05$).

RESULTS

Participants

Based on the 7-day physical activity recall interview, our participants indicated regular participation in moderate intensity physical activity. Of the 32 participants who completed the entire study protocol, five participants were excluded from analysis due to technical errors with the button response box during the FNT task and one participant was excluded due to failed completion in one of the experimental sessions. The excluded participants were mostly women (66.7%), predominantly white (83.3%), and had similar age (66.7 ± 8.1 years), BMI (23.2), resting HR (66 bpm), and MMSE score (28.7). None of these demographic characteristics were statistically significantly different from the participants who completed the study.

Exercise Manipulation Check: HR, RPE, and fMRI Task Performance

HR and RPE data during exercise and rest conditions are reported in Table 2. HR ($\pm SD$) was significantly greater during the exercise (136.1 ± 18.4 bpm) compared to rest (66.3 ± 9.2 bpm) [Condition main effect, $F(1,25) = 331.44$; $p < .001$; $\eta^2 = 0.930$]. Similarly, RPE during exercise was significantly greater (14.5 ± 1.4) relative to rest (6.1 ± 0.4) [Condition main effect, $F(1,25) = 945.562$; $p < .001$; $\eta^2 = 0.974$]. The mean RPE value during exercise was most closely associated with the verbal anchor “Hard”, indicating that participants performed exercise at the prescribed subjective exertion level of moderate intensity.

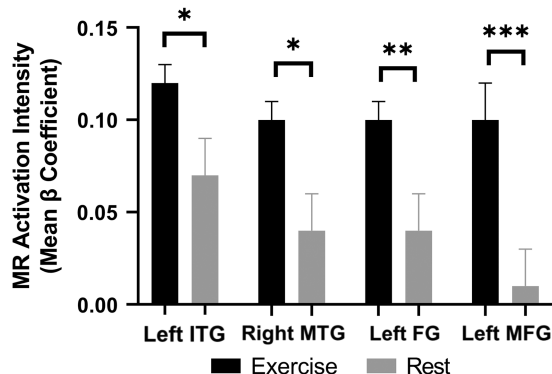


Fig. 3. Mean semantic memory-related activation intensity (mean β coefficient) for regions demonstrating significant differences between the exercise and rest conditions (*** significant difference at $p < .0001$, ** significant difference at $p < .01$, * significant difference at $p < .05$). Note. ITG, inferior temporal gyrus; MTG, middle temporal gyrus; FG, fusiform gyrus; MFG, middle frontal gyrus. Error bars = SEM.

During FNT performance (see Table 2), response time (RT) for Famous names ($\pm SD$) was 1141.1 ± 282.7 ms after exercise and 1148.2 ± 267.6 ms after rest. The mean RT ($\pm SD$) for Famous names did not show significant difference between the two conditions [Condition main effect, $F(1,25) = 0.083$; $p = .775$; $\eta^2 = 0.0037$]. The mean RT ($\pm SD$) for Non-Famous names was 1413.6 ± 363.4 ms after exercise and 1449.2 ± 267.6 ms after rest. The mean RT ($\pm SD$) for Non-Famous names also was not significantly different between the two conditions [Condition main effect, $F(1,25) = 0.656$; $p = .426$; $\eta^2 = 0.026$]. The mean performance accuracy for Famous names was not statistically different between exercise ($88.3 \pm 17.9\%$) and rest ($89.4 \pm 15.5\%$) [Condition main effect, $F(1,25) = 0.332$; $p = .570$; $\eta^2 = 0.013$]. The participants correctly identified greater than 92% of the Non-Famous names after both conditions and there was no significant condition main effect [Condition main effect, $F(1,25) = 0.001$; $p = .971$; $\eta^2 = 0.000$].

Semantic Memory fMRI Activation: Exercise and Rest Versus Zero

Results from the voxel-wise analysis and volumes of the regions that were activated in the comparison of Famous minus Non-Famous names after the exercise and rest conditions are presented in Supplementary Table S1. Although the spatial extent of activation did not include a statistical comparison between the exercise and rest conditions, exercise was associated with a greater extent of activation (2322 voxels; see Supplementary Figure S1) compared to rest (637 voxels; see Supplementary Figure S2).

Semantic Memory fMRI Activation: Comparisons of Exercise Versus Rest

The Famous > Non-Famous comparison resulted in 13 contiguous regions showing significant semantic processing-related activation after exercise or rest (Supplementary Table S1). Table 3 shows the locations of the 13 regions, and the results of the repeated measures ANOVA to compare the activation in each region after the exercise and rest conditions. Four of the 13 regions showed significantly greater activation after exercise compared to rest (see Figure 3).

In the *a priori* hippocampal activation analysis, the mean semantic memory-related activation in the bilateral hippocampus was significantly greater after exercise compared to after rest [Condition main effect, $F(1,25) = 5.382$; $p = .02$; $\eta^2 = 0.177$]. Figure 4 illustrates the comparison between the conditions in the bilateral hippocampus.

DISCUSSION

The fMRI results provide evidence that an acute bout of aerobic exercise can influence semantic memory neural circuits in healthy older adults. Specifically, we have shown greater semantic memory activation following a single

Table 2. Exercise and fMRI task outcome data for study participants

		Total sample (<i>n</i> = 26)				Condition main effect
		Exercise		Rest		
		Mean	SD	Mean	SD	<i>p</i> -Value (η^2_p)
Exercise outcome						
	HR (BPM)	136.1	18.4	66.3	9.2	< .001 (0.930)
	RPE (Borg 6-20 scale)	14.5	1.4	6.1	0.4	< .001 (0.974)
fMRI task outcome						
	Famous RT (ms)	1141.4	282.7	1148.2	267.6	.775 (0.004)
	Non-Famous RT (ms)	1413.6	363.4	1449.2	349.9	.426 (0.026)
	Correct Famous (%)	88.3	17.9	89.4	15.5	.570 (0.013)
	Correct Non-Famous (%)	92.1	16.0	92.1	16.8	.971 (0.000)

Note: *p*-Values and effect sizes reflect between and within group differences. SD, standard deviation; RPE, rating of perceived exertion; HR, heart rate; BPM, beats per minute; RT, response time; ms, millisecond; percentage of heart rate reserve; η^2_p , partial eta squared. Bold indicates *p* < .05.

session of exercise compared to rest in several brain regions involved in semantic memory retrieval. These effects were localized to the known semantic memory network, and thus do not appear to reflect an overall or general increase in brain blood flow.

The present results were contrary to the hypothesis of reduced semantic memory activation. To address this discrepancy, possible neurophysiological evidence underlying the effects of acute exercise on cognition and brain function needs to be examined. One of the important questions pertinent to the study is how acute exercise yielded greater

semantic memory activation compared to seated rest. Although the physiological mechanism behind acute exercise and associated enhancement in cognitive function remains unidentified, a plausible candidate is the upregulation of brain dopamine and noradrenaline through exercise (McMorris, Collard, Corbett, Dicks, & Swain, 2008).

The upregulation of brain dopamine and noradrenaline are associated with stimulated transcription, expression of neural growth factors [e.g., brain-derived neurotrophic factor (BDNF), insulin-like growth factor-1 (IGF-1)], and neurogenesis particularly in the dentate gyrus of the hippocampal

Table 3. Comparison of semantic memory-related activation (Famous minus Non-Famous) between the exercise and rest conditions in 13 regions

				Total sample (<i>n</i> = 26)				Condition main effect				
				Rest		Exercise						
Region #	Side	Region label	BA	<i>x</i>	<i>y</i>	<i>z</i>	vox	Mean	SD	Mean	SD	<i>p</i> -Value (η^2_p)
1	B	PCC, precuneus, PHG	7, 18,19,23,29,30,31	-11	-50	1	797	0.11	0.13	0.14	0.11	0.162 (0.077)
<i>Frontal lobes</i>												
2	R	MFG, SFG	8,9,10	2	67	1	587	0.10	0.10	0.11	0.08	0.394 (0.029)
6	B	MEFG, RG	11,25	-5	22	-26	163	0.08	0.07	0.11	0.10	0.150 (0.081)
9	R	MFG, SFG	8,9	28	19	34	92	0.06	0.05	0.06	0.05	0.911 (0.001)
10	L	MEFG	10	-8	52	-14	91	0.14	0.14	0.12	0.17	0.587 (0.012)
11	L	IFG, MEFG, MFG	10,46,47	-41	37	-5	37	0.02	0.10	0.09	0.09	0.0002 (0.438)
<i>Temporal lobes</i>												
3	L	STG, MTG, SMG, LG, AG	19,22,39,40	-52	-26	-23	350	0.10	0.11	0.12	0.10	0.379 (0.031)
4	L	STG, MTG, ITG	21,22	-56	-26	-23	247	0.07	0.10	0.12	0.07	0.023 (0.191)
7	R	STG, MTG, IPL	22,39,40	55	-62	13	121	0.09	0.13	0.12	0.09	0.460 (0.022)
8	R	MTG	21	55	-2	-26	101	0.04	0.10	0.10	0.07	0.027 (0.181)
12	L	FG	20,37	-35	-44	-23	31	0.01	0.12	0.10	0.08	0.004 (0.282)
13	R	FG, LG	18,19	22	-86	-20	29	0.04	0.29	0.13	0.12	0.163 (0.076)
<i>Subcortical</i>												
5	L	SCG, LN, CN, thalamus	34	-11	10	-11	220	0.08	0.11	0.11	0.07	0.193 (0.067)

Note: ROI, regions of interest; Positive, right (*x*), anterior (*y*), and superior (*z*), representing peak activation in Talairach coordinates; BA, Brodmann area; AG, angular gyrus; CN, Caudate nucleus, FG, fusiform gyrus; ITG, inferior temporal gyrus; IPL, inferior parietal lobule; LG, lingual gyrus; LN, Lentiform nucleus; MEFG, medial frontal gyrus; MFG, middle frontal gyrus; MTG, middle temporal gyrus; PCC, posterior cingulate cortex; PHG, parahippocampal gyrus; RG, rectal gyrus; SCG, subcallosal gyrus; SFG, superior frontal gyrus; SMG, supramarginal gyrus; STG, superior temporal gyrus; vox, number of voxels in mm³; SD, standard deviation. Comparisons in bold font are significant at *p* < .05.

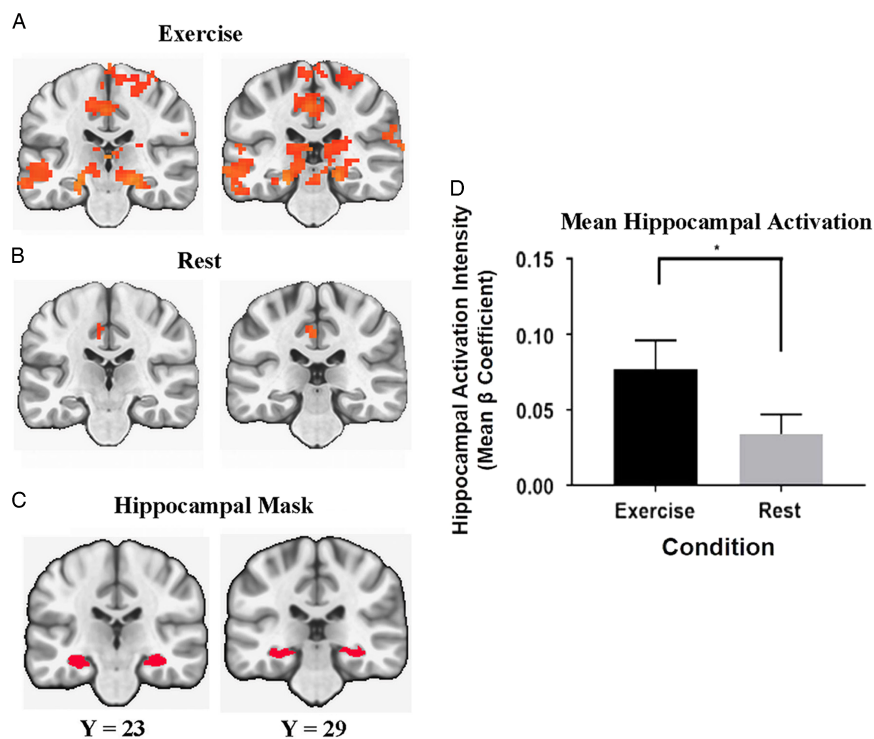


Fig. 4. Coronal view of regions that include the hippocampal formation. Significant semantic memory-related activation (Famous minus Non-Famous) was determined at a whole brain FWER corrected threshold of $p < .01$ after the exercise (A) and rest (B) conditions. The anatomical bilateral hippocampal mask is presented in panel (C). The bar graph (D) represents the bilateral hippocampal activation intensity (Mean beta Coefficient) differences between exercise and rest conditions (* significant difference at $p < .05$).

regions (Intlekofer & Cotman, 2013; Trejo, Carro, & Torres-Aleman, 2001; Van Praag, Shubert, Zhao, & Gage, 2005). Acute upregulations in these neurophysiological pathways are associated with improved cognitive function (McMorris et al., 2008). Although the current study did not assess the metabolism of such neurotransmitters, it is possible that upregulation of dopaminergic and/or noradrenergic neurotransmitters in the brain elicited by a single bout of exercise (Hyodo et al., 2012) resulted in greater semantic memory-related activation compared to rest.

The scaffolding theory of aging and cognition (STAC) theory suggests that the greater neural activation during memory retrieval in cognitively intact older adults may reflect neural reserve or successful compensation (Reuter-Lorenz & Park, 2014). Previous cross-sectional (Smith, Nielson, Woodard, Seidenberg, Verber, et al., 2011) and longitudinal evidence (Woodard et al., 2012) support the idea that greater extent and intensity of fMRI activation during the FNT is associated with cognitive stability over time. Taken together, the current findings suggest that acute exercise promotes engagement in the extended semantic memory networks and the greater engagement may reflect enhanced cognitive function in healthy older adults.

Another question left to address is why acute exercise and long-term exercise interventions result in inconsistent semantic memory activation patterns. We speculated that performing a 30-min session of aerobic exercise would engender reduction in semantic memory activation. Our prediction was based on a 12-week walking exercise

intervention study demonstrating that increased maximal aerobic capacity following the intervention led to an associated enhanced neural efficiency through a decreased neural workload during successful engagement of semantic memory networks (Smith et al., 2013).

Because the adaptations to chronic exercise training arise from an accumulation of acute exercise-induced effects, we hypothesized that performing acute exercise would also reduce semantic memory activation. However, the current and previous results may support the conclusion that short-term and long-term exercise may affect semantic memory activation differently. Cabeza (2002) suggested that greater activation patterns after a single session of exercise may demonstrate the occurrence of HAROLD (Hemispheric Asymmetry Reduction in Older Adults), presumably reflecting the activity of compensatory neural networks when performing cognitive tasks.

Recruiting a more extensive neural network during successful engagement in a cognitive task indicates a possible stimulus for enhancement or reserve in cognitive function elicited by acute exercise (Hyodo et al., 2012). The enhancement in neural network engagement during successful semantic memory retrieval after long-term participation in exercise may be indicated by reduced fMRI activation, suggesting reduced neural workload and greater network efficiency. The results of the current study complement the previously published study by Smith et al. (2013) and suggest that both acute and chronic exercise may differentially benefit the semantic memory networks.

Famous name task considerations

The present study used a low effort and high accuracy semantic memory task which instructs participants to discriminate between Famous and Non-Famous names (Douville et al., 2005). Hantke et al. (2013) suggested that semantic memory fMRI activation may be a better predictor of longitudinal cognitive change than episodic memory-related activation, while other groups of researchers have shown that future cognitive decline can be predicted by fMRI activation during episodic memory tasks (Bookheimer et al., 2000; O'Brien et al., 2010). The FNT we have used has two major advantages over episodic memory tasks.

First, the FNT has been designed to be inherently easy to perform, and, therefore, results in high accuracy even without practice. Several previous studies using the FNT in a wide range of participants including older and younger adults (Douville et al., 2005; Nielson et al., 2006), individuals with high risk for Alzheimer's disease (Seidenberg et al., 2009; Smith, Nielson, Woodard, Seidenberg, Durgerian, et al., 2011) and those diagnosed with mild cognitive impairment (MCI) (Smith et al., 2013; Woodard et al., 2009) show consistently high accuracy (>80%) on the task. Because the task is so easy to perform, we did not expect participants to improve their behavioral performance. Participants in the present study also demonstrated high accuracy (>88%) during recognition of famous names. The high accuracy rate, in fact, is a major advantage of the task as it eliminates any confounding influence of task difficulty. Unlike more difficult episodic memory tasks, for example, the activation observed in this semantic memory task is independent of task performance and task difficulty.

Second, the event-related fMRI design allows the exclusion of incorrect trials and thus only successful memory trials are used for the analysis (Seidenberg et al., 2013). The use of an event-related procedure may have reduced error-based contributions to the functional maps (Woodard et al., 2009). Also, by subtracting the Non-Famous names activation from that of Famous ones, we were able to remove any confounding influence of performance and any activation not related to semantic memory network (e.g., activations of visual cortex when seeing the screen or motor cortex associated with finger movement during performance of the task). This allows for the isolation of semantic memory-related activation, as demonstrated previously by others (Douville et al., 2005; Nielson et al., 2006; Seidenberg et al., 2009; Smith et al., 2013; Smith, Nielson, Woodard, Seidenberg, Durgerian, et al., 2011; Sugarman et al., 2012; Woodard et al., 2009).

One may wonder if the effects we observed could be explained by increased cerebral blood flow (CBF) after exercise. Studies in humans have demonstrated that global brain blood flow is controlled quite tightly *during* exercise, and is maintained at a nearly constant rate not different from a resting metabolic rate (Ide & Secher, 2000). The key question is whether or not there are *regional* changes in CBF *after* acute exercise in areas implicated in semantic memory (or

other cognitive functions). Studies that have measured CBF after exercise have reported mixed results; exercise has been shown to increase global CBF (Smith et al., 2010), to decrease CBF (MacIntosh et al., 2014), and to not change CBF (Pontifex, Gwizdala, Weng, Zhu, & Voss, 2018).

Unfortunately, we do not have the perfusion imaging data to directly address the question regarding regional changes in CBF. However, the experimental design of the FNT takes into consideration global changes in CBF through the subtraction of the BOLD response for the Famous and Non-Famous names as the estimate of neural activation. If exercise had a general effect to increase CBF throughout the brain (or even regionally), then this would have affected the BOLD signal in response to the Famous and Non-Famous name stimuli; their subtraction effectively cancels any effect related to whole brain differences in CBF. Therefore, it is unlikely that increased CBF after acute exercise can explain the results of present study.

Moreover, the pattern of activation after both conditions is very consistent with several papers we have published over the past 10 years using this task (Nielson et al., 2006; Smith et al., 2013; Woodard et al., 2009), and is localized in the well-characterized semantic memory network (Binder, Desai, Graves, & Conant, 2009; Rao et al., 2015), including the bilateral middle temporal gyrus, superior temporal gyrus, hippocampus, parahippocampal gyrus, posterior cingulate gyrus, and precuneus.

Because of the well-documented effects of exercise on the hippocampus, we also conducted an *a priori* analysis using a hippocampal anatomical mask and identified greater bilateral activation after exercise compared to rest. Regular participation in physical activity and associated enhancement in cardiorespiratory fitness are related to attenuation of age-related brain tissue atrophy, especially within the hippocampus (Colcombe et al., 2006; Erickson et al., 2010; Gordon et al., 2008; Suwabe et al., 2018).

Also, regular exercise has been shown to decrease amyloid burden in the hippocampus (Adlard et al., 2005). The recent work by Suwabe and colleagues (Suwabe et al., 2018) suggests low intensity exercise is sufficient to increase hippocampal activation during pattern separation. Our findings further suggest that acute moderate intensity exercise, compared to rest, results in a greater recruitment of hippocampal neural activation during semantic memory retrieval.

LIMITATIONS

There are several limitations in the current study. First, the present study did not differentiate types or intensities of exercise, or determine if acute exercise influences other cognitive domains. An important direction for future research is to investigate the effect of acute exercise of differing intensities on other cognitive domains including executive function using the fMRI BOLD signal. Second, this study is not able to answer questions regarding the effect of acute exercise on older adults diagnosed with neurodegenerative

symptoms such as mild cognitive impairment and Alzheimer's disease, since only cognitively asymptomatic older adults participated in this study. Similarly, our participants were regularly engaged in moderate intensity physical activity, and we cannot assume these effects would be observed in sedentary older adults.

In addition, because the FNT task engages semantic memory networks and is designed to be inherently easy to perform, our study was not designed to examine changes in other types of memory performance, such as episodic memory or working memory. Finally, due to time and cost constraints, we were not able to conduct scans both before and after the rest and exercise conditions. However, using our counterbalanced post-test only design, we were able to demonstrate that HR and perception of effort were significantly greater during the exercise session compared to rest, indicating a sound experimental manipulation.

CONCLUSION

The present study suggests that an acute bout of exercise is associated with an increase in semantic memory activation compared to rest when measured approximately 30 min after the exercise has ended. Our previous study (Smith et al., 2013) showed that exercise training was associated with *decreased* semantic activation using the same task on a day that exercise was not performed. The decreased activation after a period of exercise training, coupled with consistently high accuracy on the task, suggests enhanced neural efficiency (Smith et al., 2013).

Our current results show an opposite pattern. We speculate that performing a single bout of exercise elicits a short-term impact on the upregulation and expression of neurotransmitters and neural growth factors that promotes increased neural activation (Hyodo et al., 2012). With regular participation in exercise, this process repeatedly occurs; a stress to the system followed by recovery and adaptation. This may promote a greater capacity within the neural networks, perhaps related to increased oxidative capacity, mitochondrial function, insulin sensitivity (Heath et al., 1983), and/or neurotransmitter receptor number or sensitivity (Meeusen et al., 1997).

Exercise results in increased dopaminergic activity in the basal ganglia, and these ascending dopaminergic projections have been shown to increase the signal to noise ratio in frontal cortical networks, and D1 receptor activation may help to prolong frontal-striatal network activation (Crosson, Benjamin, & Levy, 2007). These adaptations may represent the building of a stronger neural scaffolding (Reuter-Lorenz & Park, 2014) that ultimately leads to a stronger, more efficient and resilient neural network, able to better withstand age- or disease-related insults.

Based on this plausible mechanism, we hypothesize that neural adaptations after daily bouts of exercise mediate exercise training-related cognitive improvement and enhanced brain function. The immediate and long-term clinical impacts of

these findings are yet to be fully elucidated, but our data suggest that single sessions of exercise may be a stimulus to bolster the capacity of memory networks during successful memory retrieval, and support previous findings indicating exercise offers protection against age-related cognitive decline.

ACKNOWLEDGMENTS

None of the authors have a conflict of interest to report. Support for this study was provided by the Department of Kinesiology at University of Maryland. This project was completed by J.W. in partial fulfillment of the requirements for the Master of Arts degree in Kinesiology at the University of Maryland. We thank the participants for their time and dedication while participating in this study. We also thank Sally Durgerian for her technical and analytical assistance.

SUPPLEMENTARY MATERIAL

To view supplementary material for this article, please visit <https://doi.org/10.1017/S1355617719000171>

REFERENCES

- Adlard, P.A., Perreau, V.M., Pop, V., & Cotman, C.W. (2005). Voluntary exercise decreases amyloid load in a transgenic model of Alzheimer's disease. *Journal of Neuroscience*, *25*(17), 4217–4221.
- Basso, J.C., & Suzuki, W.A. (2017). The effects of acute exercise on mood, cognition, neurophysiology and neurochemical pathways: A review. *Brain Plasticity*, *28*, 127–152.
- Binder, J.R., Desai, R.H., Graves, W.W., & Conant, L.L. (2009). Where is the semantic system? A critical review and meta-analysis of 120 functional neuroimaging studies. *Cerebral Cortex*, *19*(12), 2767–2796.
- Bookheimer, S.Y., Strojwas, M.H., Cohen, M.S., Saunders, A.M., Pericak-Vance, M.A., Mazziotta, J. C., & Small, G. W. (2000). Patterns of brain activation in people at risk for Alzheimer's disease. *New England Journal of Medicine*, *343*(7), 450–456.
- Borg, G. (1970). Perceived exertion as an indicator of somatic stress. *Scandinavian Journal of Rehabilitation Medicine*, *2*(2), 92.
- Cabeza, R. (2002). Hemispheric asymmetry reduction in older adults: The HAROLD model. *Psychology and Aging*, *17*(1), 85.
- Colcombe, S.J., Erickson, K.I., Scalf, P.E., Kim, J.S., Prakash, R., McAuley, E., . . . Kramer, A.F. (2006). Aerobic exercise training increases brain volume in aging humans. *The Journals of Gerontology Series A: Biological Sciences and Medical Sciences*, *61*(11), 1166–1170.
- Cotman, C.W., & Engesser-Cesar, C. (2002). Exercise enhances and protects brain function. *Exercise and Sport Sciences Reviews*, *30*(2), 75–79.
- Cox, R.W. (1996). AFNI: Software for analysis and visualization of functional magnetic resonance neuroimages. *Computers and Biomedical Research*, *29*(3), 162–173.
- Crosson, B., Benjamin, M., & Levy, I. (2007). *Role of the basal ganglia in language and semantics: Supporting cast*. New York, NY: Cambridge University Press.
- Detoleto-Morrell, L., Geinisman, Y., & Morrell, F. (1988). Age-dependent alterations in hippocampal synaptic plasticity: Relation to memory disorders. *Neurobiology of Aging*, *9*, 581–590.

- Douville, K., Woodard, J.L., Seidenberg, M., Miller, S.K., Leveroni, C.L., Nielson, K.A., ... Rao, S.M. (2005). Medial temporal lobe activity for recognition of recent and remote famous names: An event-related fMRI study. *Neuropsychologia*, 43(5), 693–703.
- Eklund, A., Nichols, T., & Knutsson, H. (2015). Can parametric statistical methods be trusted for fMRI based group studies? *ArXiv Preprint ArXiv:1511.01863*. Retrieved from <https://arxiv.org/abs/1511.01863>
- Erickson, K.I., Prakash, R.S., Voss, M.W., Chaddock, L., Heo, S., McLaren, M., ... others. (2010). Brain-derived neurotrophic factor is associated with age-related decline in hippocampal volume. *Journal of Neuroscience*, 30(15), 5368–5375.
- Erickson, K.I., Voss, M.W., Prakash, R.S., Basak, C., Szabo, A., Chaddock, L., ... Kramer, A.F. (2011). Exercise training increases size of hippocampus and improves memory. *Proceedings of the National Academy of Sciences of the United States of America*, 108(7), 3017–3022.
- Etner, J.L., Wideman, L., Labban, J.D., Piepmeier, A.T., Pendleton, D.M., Dvorak, K.K., & Becofsky, K. (2016). The effects of acute exercise on memory and brain-derived neurotrophic factor (BDNF). *Journal of Sport and Exercise Psychology*, 38(4), 331–340.
- Ferré, S., & O'Brien, M.C. (2011). Alcohol and caffeine: The perfect storm. *Journal of Caffeine Research*, 1(3), 153–162.
- Fischl, B. (2012). FreeSurfer. *Neuroimage*, 62(2), 774–781.
- Folstein, M.F., Folstein, S.E., & McHugh, P.R. (1975). "Minimal state": A practical method for grading the cognitive state of patients for the clinician. *Journal of Psychiatric Research*, 12(3), 189–198.
- Foster, T.C. (1999). Involvement of hippocampal synaptic plasticity in age-related memory decline. *Brain Research Reviews*, 30(3), 236–249.
- Gómez-Pinilla, F., Ying, Z., Roy, R.R., Molteni, R., & Edgerton, V.R. (2002). Voluntary exercise induces a BDNF-mediated mechanism that promotes neuroplasticity. *Journal of Neurophysiology*, 88(5), 2187–2195.
- Gordon, B.A., Rykhlevskaia, E.I., Brumback, C.R., Lee, Y., Elavsky, S., Konopack, J.F., ... Gratton, G. (2008). Neuroanatomical correlates of aging, cardiopulmonary fitness level, and education. *Psychophysiology*, 45(5), 825–838.
- Hantke, N., Nielson, K.A., Woodard, J.L., Breting, L.M.G., Butts, A., Seidenberg, M., ... Rao, S.M. (2013). Comparison of semantic and episodic memory BOLD fMRI activation in predicting cognitive decline in older adults. *Journal of the International Neuropsychological Society*, 19(1), 11–21.
- Heath, G.W., Gavin, J.R. III, Hinderliter, J.M., Hagberg, J.M., Bloomfield, S.A., & Holloszy, J.O. (1983). Effects of exercise and lack of exercise on glucose tolerance and insulin sensitivity. *Journal of Applied Physiology*, 55(2), 512–517.
- Henry, J.D., Crawford, J.R., & Phillips, L.H. (2004). Verbal fluency performance in dementia of the Alzheimer's type: A meta-analysis. *Neuropsychologia*, 42(9), 1212–1222.
- Hyodo, K., Dan, I., Suwabe, K., Kyutoku, Y., Yamada, Y., Akahori, M., ... Soya, H. (2012). Acute moderate exercise enhances compensatory brain activation in older adults. *Neurobiology of Aging*, 33(11), 2621–2632.
- Ide, K., & Secher, N.H. (2000). Cerebral blood flow and metabolism during exercise. *Progress in Neurobiology*, 61(4), 397–414.
- Intlekofer, K.A., & Cotman, C.W. (2013). Exercise counteracts declining hippocampal function in aging and Alzheimer's disease. *Neurobiology of Disease*, 57, 47–55.
- Jonker, C., Geerlings, M.I., & Schmand, B. (2000). Are memory complaints predictive for dementia? A review of clinical and population-based studies. *International Journal of Geriatric Psychiatry*, 15(11), 983–991.
- Kamijo, K., Nishihira, Y., Higashiura, T., & Kuroiwa, K. (2007). The interactive effect of exercise intensity and task difficulty on human cognitive processing. *International Journal of Psychophysiology*, 65(2), 114–121.
- Kuhn, H.G., Dickinson-Anson, H., & Gage, F.H. (1996). Neurogenesis in the dentate gyrus of the adult rat: Age-related decrease of neuronal progenitor proliferation. *Journal of Neuroscience*, 16(6), 2027–2033.
- Leirer, O., Morrow, D.G., Pariante, G.M., & Sheikh, J.I. (1988). Elders' nonadherence, its assessment, and computer assisted instruction for medication recall training. *Journal of the American Geriatrics Society*, 36(10), 877–884.
- Lonie, J.A., Herrmann, L.L., Tierney, K.M., Donaghey, C., O'Carroll, R., Lee, A., & Ebmeier, K. P. (2009). Lexical and semantic fluency discrepancy scores in aMCI and early Alzheimer's disease. *Journal of Neuropsychology*, 3(1), 79–92.
- MacIntosh, B.J., Crane, D.E., Sage, M.D., Rajab, A.S., Donahue, M. J., McLroy, W.E., & Middleton, L.E. (2014). Impact of a single bout of aerobic exercise on regional brain perfusion and activation responses in healthy young adults. *PLoS One*, 9(1), e85163.
- McMorris, T., Collard, K., Corbett, J., Dicks, M., & Swain, J.P. (2008). A test of the catecholamines hypothesis for an acute exercise–cognition interaction. *Pharmacology Biochemistry and Behavior*, 89(1), 106–115.
- Meeusen, R., Smolders, I., Sarre, S., De Meirleir, K., Keizer, H., Serneels, M., ... Michotte, Y. (1997). Endurance training effects on neurotransmitter release in rat striatum: An in vivo microdialysis study. *Acta Physiologica Scandinavica*, 159(4), 335–341.
- Morrison, J.H., & Hof, P.R. (1997). Life and death of neurons in the aging brain. *Science*, 278(5337), 412–419.
- Nielson, K.A., Douville, K.L., Seidenberg, M., Woodard, J.L., Miller, S.K., Franczak, M., ... Rao, S.M. (2006). Age-related functional recruitment for famous name recognition: An event-related fMRI study. *Neurobiology of Aging*, 27(10), 1494–1504.
- Nouchi, R., Taki, Y., Takeuchi, H., Sekiguchi, A., Hashizume, H., Nozawa, T., ... Kawashima, R. (2014). Four weeks of combination exercise training improved executive functions, episodic memory, and processing speed in healthy elderly people: Evidence from a randomized controlled trial. *Age*, 36(2), 787–799.
- O'Brien, J.L., O'Keefe, K.M., LaViolette, P.S., DeLuca, A.N., Blacker, D., Dickerson, B.C., & Sperling, R.A. (2010). Longitudinal fMRI in elderly reveals loss of hippocampal activation with clinical decline. *Neurology*, 74(24), 1969–1976.
- Pereira, A.C., Huddleston, D.E., Brickman, A.M., Sosunov, A.A., Hen, R., McKhann, G.M., ... Small, S.A. (2007). An in vivo correlate of exercise-induced neurogenesis in the adult dentate gyrus. *Proceedings of the National Academy of Sciences of the United States of America*, 104(13), 5638–5643.
- Pontifex, M.B., Gwizdala, K.L., Weng, T.B., Zhu, D.C., & Voss, M.W. (2018). Cerebral blood flow is not modulated following acute aerobic exercise in preadolescent children. *International Journal of Psychophysiology*, 134, 44–51.
- Rao, S.M., Bonner-Jackson, A., Nielson, K.A., Seidenberg, M., Smith, J.C., Woodard, J.L., & Durgerian, S. (2015). Genetic risk for Alzheimer's disease alters the five-year trajectory of semantic memory activation in cognitively intact elders. *Neuroimage*, 111, 136–146.

- Raz, N., Lindenberger, U., Rodrigue, K.M., Kennedy, K.M., Head, D., Williamson, A., ... Acker, J.D. (2005). Regional brain changes in aging healthy adults: General trends, individual differences and modifiers. *Cerebral Cortex*, *15*(11), 1676–1689.
- Rejeski, W.J., & Mihalko, S.L. (2001). Physical activity and quality of life in older adults. *The Journals of Gerontology Series A: Biological Sciences and Medical Sciences*, *56*(Suppl. 2), 23–35.
- Reuter-Lorenz, P.A., & Park, D.C. (2014). How does it STAC up? Revisiting the scaffolding theory of aging and cognition. *Neuropsychology Review*, *24*(3), 355–370.
- Ruscheweyh, R., Willemer, C., Krüger, K., Duning, T., Warnecke, T., Sommer, J., ... Flöel, A. (2011). Physical activity and memory functions: An interventional study. *Neurobiology of Aging*, *32*(7), 1304–1319.
- Russo-Neustadt, A.A., Alejandre, H., Garcia, C., Ivy, A.S., & Chen, M.J. (2004). Hippocampal brain-derived neurotrophic factor expression following treatment with reboxetine, citalopram, and physical exercise. *Neuropsychopharmacology*, *29*(12), 2189.
- Sallis, J.F., Haskell, W.L., Wood, P.D., Fortmann, S.P., Rogers, T., Blair, S.N., & Paffenbarger, R.S. Jr. (1985). Physical activity assessment methodology in the Five-City Project. *American Journal of Epidemiology*, *121*(1), 91–106.
- Segal, S.K., Cotman, C.W., & Cahill, L.F. (2012). Exercise-induced noradrenergic activation enhances memory consolidation in both normal aging and patients with amnesic mild cognitive impairment. *Journal of Alzheimer's Disease*, *32*(4), 1011–1018.
- Seidenberg, M., Guidotti, L., Nielson, K.A., Woodard, J.L., Durgerian, S., Antuono, P., ... Rao, S.M. (2009). Semantic memory activation in individuals at risk for developing Alzheimer disease. *Neurology*, *73*(8), 612–620.
- Seidenberg, M., Kay, C.D., Woodard, J.L., Nielson, K.A., Smith, J. C., Kandah, C., ... Rao, S.M. (2013). Recognition of famous names predicts cognitive decline in healthy elders. *Neuropsychology*, *27*(3), 333.
- Smith, J.C., Nielson, K.A., Antuono, P., Lyons, J.-A., Hanson, R.J., Butts, A.M., ... Verber, M.D. (2013). Semantic memory functional MRI and cognitive function after exercise intervention in mild cognitive impairment. *Journal of Alzheimer's Disease*, *37*(1), 197–215.
- Smith, J.C., Nielson, K.A., Woodard, J.L., Seidenberg, M., Durgerian, S., Antuono, P., ... Rao, S.M. (2011). Interactive effects of physical activity and APOE-ε4 on BOLD semantic memory activation in healthy elders. *Neuroimage*, *54*(1), 635–644.
- Smith, J.C., Nielson, K.A., Woodard, J.L., Seidenberg, M., Verber, M.D., Durgerian, S., ... Lancaster, M.A. (2011). Does physical activity influence semantic memory activation in amnesic mild cognitive impairment? *Psychiatry Research: Neuroimaging*, *193*(1), 60–62.
- Smith, J.C., Paulson, E.S., Cook, D.B., Verber, M.D., & Tian, Q. (2010). Detecting changes in human cerebral blood flow after acute exercise using arterial spin labeling: Implications for fMRI. *Journal of Neuroscience Methods*, *191*(2), 258–262.
- Sugarman, M.A., Woodard, J.L., Nielson, K.A., Seidenberg, M., Smith, J.C., Durgerian, S., & Rao, S.M. (2012). Functional magnetic resonance imaging of semantic memory as a presymptomatic biomarker of Alzheimer's disease risk. *Biochimica et Biophysica Acta*, *1822*(3), 442–456.
- Suwabe, K., Byun, K., Hyodo, K., Reagh, Z.M., Roberts, J.M., Matsushita, A., ... Suzuki, K. (2018). Rapid stimulation of human dentate gyrus function with acute mild exercise. *Proceedings of the National Academy of Sciences of the United States of America*, *115*(41), 10487–10492.
- Trejo, J.L., Carro, E., & Torres-Aleman, I. (2001). Circulating insulin-like growth factor I mediates exercise-induced increases in the number of new neurons in the adult hippocampus. *Journal of Neuroscience*, *21*(5), 1628–1634.
- Van Praag, H., Shubert, T., Zhao, C., & Gage, F.H. (2005). Exercise enhances learning and hippocampal neurogenesis in aged mice. *Journal of Neuroscience*, *25*(38), 8680–8685.
- Vance, D.E., Wadley, V.G., Ball, K.K., Roenker, D.L., & Rizzo, M. (2005). The effects of physical activity and sedentary behavior on cognitive health in older adults. *Journal of Aging and Physical Activity*, *13*(3), 294–313.
- Vaynman, S., & Gomez-Pinilla, F. (2006). Revenge of the “sit”: How lifestyle impacts neuronal and cognitive health through molecular systems that interface energy metabolism with neuronal plasticity. *Journal of Neuroscience Research*, *84*(4), 699–715.
- Weinberg, L., Hasni, A., Shinohara, M., & Duarte, A. (2014). A single bout of resistance exercise can enhance episodic memory performance. *Acta Psychologica*, *153*, 13–19.
- Winter, B., Breitenstein, C., Mooren, F.C., Voelker, K., Fobker, M., Lechtermann, A., ... Knecht, S. (2007). High impact running improves learning. *Neurobiology of Learning and Memory*, *87*(4), 597–609.
- Woodard, J.L., Seidenberg, M., Nielson, K.A., Antuono, P., Guidotti, L., Durgerian, S., ... Rao, S.M. (2009). Semantic memory activation in amnesic mild cognitive impairment. *Brain*, *132*(8), 2068–2078.
- Woodard, J.L., Sugarman, M.A., Nielson, K.A., Smith, J.C., Seidenberg, M., Durgerian, S., ... Rao, S.M. (2012). Lifestyle and genetic contributions to cognitive decline and hippocampal structure and function in healthy aging. *Current Alzheimer Research*, *9*(4), 436–446.
- World Medical Association. (2008). Declaration of Helsinki. Ethical principles for medical research involving human subjects. <http://www.wma.net/e/Policy/B3.htm>. Retrieved from <http://ci.nii.ac.jp/naid/10021949345/>