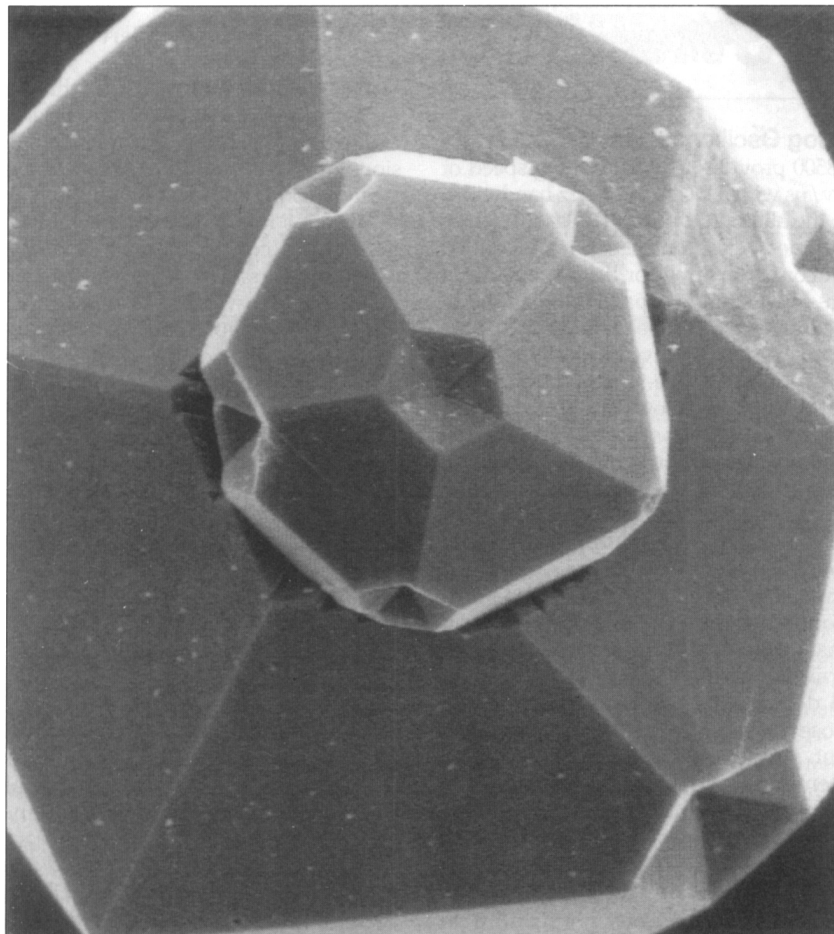


Figures appearing in EDITOR'S CHOICE are those arising from materials research which strike the editor's fancy as being aesthetically appealing and eye-catching. No further criteria are applied and none should be assumed. When taken out of context, such figures often evoke images beyond and unrelated to the original meaning. Submissions of candidate figures are welcome and should include a complete source citation, a photocopy of the report in which it appears (or will appear), and a reproduction-quality original drawing or photograph of the figure in question.



Included in a standard battery of psychological tests is the trial that determines if one can distinguish between round and square holes and then correctly correlate these with round and square pegs. The next level of sophistication, as illustrated in this month's EDITOR'S CHOICE, is correlation of the pentagonal face of an icosahedron with a matching cavity. From the perspective of this SEM micrograph, it's hard to tell if this particular subject passed or failed the test, but this test variant is clearly designed to diagnose the more extreme conditions. The pictured icosahedron was itself born of boron and oxygen under the stress of great pressures and high temperatures, and it retains in its makeup a legacy of distortions and strains. Perhaps this is why it exhibits uncommon hardness in the face of the most abrasive situations at the same time it manifests its delicate 20-faceted elegant symmetry. The cause of the multiple personality lies in the answer to the riddle, "When is crystal not a crystal?" A crystallographer would say, "when it has a forbidden five-fold axis." But, the authors who reported synthesis of the pictured ~10- and ~25-micrometer "crystals" of suboxide of boron (B_6O_{1-x}) would answer, "when it is comprised of multiply twinned icosahedral particles." A full explanation of the schizophrenic motif and more micrographs can be found in H. Hubert et al. *Nature* **391** (1998) p. 376 and *Chem. Mater.* **10** (6) (1998) p. 1530.

**MRS Members
receive 20%
OFF**

AR *Annual Reviews
publications!*

**ANNUAL REVIEW OF
MATERIALS SCIENCE**

Volume 27 - 1997

Editor: ELTON KAUFMANN

Associate Editors:
JOSEPH GIORDMAINE,
JOHN B. WACHTMAN, JR.

Guest Editor:
CHRISTOPHER SUMMERS

- KEYNOTE TOPIC: Display Materials**
Bistable Cholesteric Reflective Displays, *Deng-Ke Yang, Xiao-Yang Huang, Yang-Ming Zhu*
Thin-Film Electroluminescent Devices
J.F. Wager, P.D. Keir
Full-Color Electroluminescent Displays
Yoshimasa A. Ono
Liquid Crystal Materials & Displays
Martin Schadt
Liquid Crystal Materials - Active Matrix Displays, *K. Tarumi, M. Bremer, T. Geelhaar*
Supertwisted Nematic (STN) LCDs
Terry Scheffer, Jürgen Nehring
PERSPECTIVE
Future Directions in Carbon Science
M.S. Dresselhaus

PLUS
13 Other Critical Review Articles on a Variety of Current Topics in Materials Research



Consult our Website for complete topic and authors information:

<http://www.annualreviews.org>

List Price: \$ 80 USA / \$85 Foreign
MRS Member Price:
\$64 USA / \$68 Foreign

Mention the MRS Discount when placing orders. Must be a member in good standing with MRS to qualify for discount rate.



ANNUAL REVIEWS

a nonprofit scientific publisher
4139 El Camino Way

P.O. Box 10139

Palo Alto, CA 94303-0139 USA

TEL: (650) 493-4400 FAX: (650) 424-0910

Circle No. 14 on Reader Service Card.