

Risk factors for herpes zoster in a large cohort of unvaccinated older adults: a prospective cohort study

B. LIU^{1,2*}, A. E. HEYWOOD¹, J. REEKIE³, E. BANKS^{2,4}, J. M. KALDOR³,
P. MCINTYRE⁵, A. T. NEWALL¹ AND C. R. MACINTYRE¹

¹*School of Public Health and Community Medicine, UNSW, Sydney, NSW, Australia*

²*The Sax Institute, Sydney, NSW, Australia*

³*The Kirby Institute, UNSW, Sydney, NSW, Australia*

⁴*National Centre for Epidemiology and Population Health, Australian National University, Canberra, ACT, Australia*

⁵*National Centre for Immunisation Research and Surveillance, University of Sydney, NSW, Australia*

*Received 22 June 2014; Final revision 23 October 2014; Accepted 2 December 2014;
first published online 16 January 2015*

SUMMARY

We analysed data from a prospective cohort of 255024 adults aged ≥ 45 years recruited from 2006–2009 to identify characteristics associated with a zoster diagnosis. Diagnoses were identified by linkage to pharmaceutical treatment and hospitalization records specific for zoster and hazard ratios were estimated. Over 940583 person-years, 7771 participants had a zoster diagnosis; 253 (3.3%) were hospitalized. After adjusting for age and other factors, characteristics associated with zoster diagnoses included: having a recent immunosuppressive condition [adjusted hazard ratio (aHR) 1.58, 95% confidence interval (CI) 1.32–1.88], female sex (aHR 1.36, 95% CI 1.30–1.43), recent cancer diagnosis (aHR 1.35, 95% CI 1.24–1.46), and severe physical limitation *vs.* none (aHR 1.33, 95% CI 1.23–1.43). The relative risk of hospitalization for zoster was higher for those with an immunosuppressive condition (aHR 3.78, 95% CI 2.18–6.55), those with cancer (aHR 1.78, 95% CI 1.24–2.56) or with severe physical limitations (aHR 2.50, 95% CI 1.56–4.01). The novel finding of an increased risk of zoster diagnoses and hospitalizations in those with physical limitations should prompt evaluation of the use of zoster vaccine in this population.

Key words: Herpes zoster, prospective study, risk factors, shingles, vaccination.

INTRODUCTION

Herpes zoster, caused by re-activation of the varicella zoster virus (VZV) commonly occurs in older adults and causes substantial morbidity. The incidence and severity of zoster is thought to increase with decreasing cell-mediated immunity and studies have shown

consistently that the risk of zoster increases with age, particularly beyond 50 years [1, 2] and also with specific immunosuppressive conditions [3, 4]. There is more limited evidence regarding the role of other factors. Some have suggested that zoster incidence may differ by sex [5], ethnicity [2, 6, 7], contact with children [8], other illnesses [2], and long-term stress or depression [6, 9], but few studies have looked at a comprehensive range of characteristics in the same population with adjustment for multiple factors [10].

A live-attenuated VZV vaccine has been shown to reduce zoster risk in adults aged ≥ 60 years by 51%

* Author for correspondence: Dr B. Liu, School of Public Health and Community Medicine, University of New South Wales, Sydney NSW 2052, Australia.
(Email: bette.liu@unsw.edu.au)

and post-herpetic neuralgia by 66.5% [11]; however, waning efficacy has been described with vaccine efficacy beyond 5 years uncertain [12]. Some countries have recommended this vaccine be included in their adult immunization schedules although supply issues have delayed its introduction. In Australia, where this study was conducted, the vaccine was not readily available, even in the private sector, until 2013 although it was judged cost-effective for public funding in 2008. Given the challenges and costs associated with mass vaccination of adults, we conducted this study to estimate the incidence of herpes zoster, according to different characteristics, in a large unvaccinated general adult cohort. Our aim was to provide evidence to better understand the epidemiology of zoster, as well as to inform priorities for adult vaccination.

METHODS

The 45 and Up Study is a population-based cohort of over 267000 adults aged ≥ 45 years in the Australian state of New South Wales (NSW). Detailed information on the cohort has been published elsewhere [13]. Briefly, adults resident in NSW were randomly selected from the Australian Medicare database, which has virtually complete coverage of the entire resident Australian population, and invited to take part in the study. Individuals completed a questionnaire which included items on socio-demographic characteristics, lifestyle and health (see: www.saxinstitute.org.au/our-work/45-up-study/questionnaires/) and provided consent for long-term follow-up, including linkage to administrative health records.

Participants had their survey data linked deterministically, using the Medicare Australia database, to their universal health insurance claims data [Pharmaceutical Benefits Scheme (PBS) and Medicare Benefits Schedule (MBS)]. They were also linked to state-wide hospitalization, cancer, infectious diseases and death registrations, using probabilistic matching of their name, date of birth and address. Probabilistic matching is highly accurate (false-positive and false-negative rates $< 0.4\%$) [14]. PBS data include a record of all medications prescribed and dispensed where the cost is above a threshold value. The date of prescription and supply, and exact formulation are recorded. Data were available from August 2004. The hospitalization data included a record of all hospitalizations in NSW including the admission date, the main diagnosis and up to 49 additional coded diagnoses related to the admission.

Diagnoses were coded according to the International Classification of Diseases – version 10 (ICD-10) [15]. Records were available from July 2000. The cancer registrations include a record of all cancers diagnosed in NSW from 1994 coded according to ICD-10, and the date of diagnosis. The death records included a record of all deaths in NSW and the date of death. We had complete records for study participants from the PBS, hospitalization and death databases up to 31 December 2011.

We classified a participant as having a herpes zoster diagnosis if they linked to records of either a specific treatment for zoster in the PBS database, or a hospitalization with an ICD-10 code of ‘B02 – zoster’ in either the first (principal) or second diagnostic field. In Australia, antiviral medication (either acyclovir, valacyclovir or famciclovir) is recommended for treatment of zoster [16, 17]. A special ‘authority’ prescription needs to be obtained by the treating practitioner and the indication must be specifically for treatment of zoster (PBS codes: 1052J, 8002E, 8064 K, 8897G). These PBS records are therefore highly specific for zoster diagnoses and this method of ascertainment (prescription records) has been used in other epidemiological studies [3, 7, 18, 19]. Hospitalization data are less specific [20]. Based on published data regarding the sensitivity and specificity of zoster codes in hospitalization data [21] and our own inspection of the records, we classified a hospitalization if either the primary or secondary diagnosis fields contained an ICD-10 code for zoster. For the date of diagnosis we assigned the date of prescribing of the treatment, or the date of hospital admission, or whichever came first if there were links to both types of records.

To estimate the incidence and relative risks of zoster according to different characteristics hypothesized to be associated with zoster, we used data that were self-reported by participants at recruitment (e.g. socio-demographics) or data from one of the linked health records (e.g. immunosuppressive disorders or cancer diagnoses).

Ethical approval

All participants provided informed consent to be included in the study. The linkage study was approved by the NSW Population and Health Services Research Ethics Committee (HREC/10/CIPHS/97) and the 45 and Up Study was approved by the University of New South Wales Human Research Ethics Committee (no. 10186).

Analyses

We excluded study participants who were Department of Veterans Affairs card holders ($n = 6323$) as they can receive zoster treatment through an alternate scheme to the PBS, those with invalid dates of study entry or dates of birth ($n = 26$) and those with a zoster diagnosis prior to recruitment ($n = 5854$). Person-years of follow-up were calculated from study entry date to the first diagnosis of zoster, death, or 31 December 2011, whichever came first. Incidence rates were examined by sex and 5-year age groups according to attained age. Cox proportional hazards models with time updating of age were used to estimate relative risks of zoster according to different characteristics [2, 22]. Characteristics included sex, household income, married or living with a partner, having had children, education, area of residence [23], skin colour, country of birth (according to those with a known later onset of varicella infection), smoking, body mass index (BMI), alcohol consumption, frequency of vigorous physical activity, time spent outdoors, attending cancer screening programmes (mammography, prostate specific antigen testing or bowel cancer screening), use of supplements/vitamins, self-reported history of doctor-diagnosed asthma, cardiac disease, stroke, diabetes, depression/anxiety and hay fever. The level of physical limitation was assessed using the Medical Outcomes Study – Physical Functioning Score [24]. This is a 10-item standard questionnaire asking about whether an individual's health limits their ability to undertake physical activities including walking, climbing stairs, bending, lifting, dressing, etc.; participants are scored for each physical activity item based on whether they report being limited a lot, a little or not at all and the scores are combined to give an overall estimate of physical functioning with those not limited in any activities classified as 'none' and standard cut-points for each level of physical limitation, minor, moderate or severe.

Individuals were also classified according to whether they had a recent record of an immunosuppressive condition or cancer. An immunosuppressive condition was defined if individuals linked to a HIV registration, a PBS record of an immunosuppressive medication, or a hospitalization in the year prior to study entry for any one of a list of potentially immunosuppressive conditions including transplants or conditions that may result in administration of high-dose steroids (see Supplementary Appendix). Cancer was recorded if there was a record in the 5 years prior to

study entry of a cancer registration or hospitalization with a primary diagnosis of cancer, except non-melanoma skin cancer (ICD-10 codes C00-C97 excluding C44).

All factors were initially examined in an age- and sex-adjusted model and then examined together in a multivariate model. Factors were included in the multivariate model if they were associated ($P < 0.05$) with zoster in the minimally adjusted model, or they were considered *a priori* as potential confounders. We also re-ran the multivariate analyses using only the outcome of hospitalization for zoster as a measure of severe disease. Subgroup analyses were conducted by age group (<60 , 60–74, ≥ 75 years), sex, area of residence (major city vs. regional/remote), and by measures of health service access (attending cancer screening programmes and taking supplements). Attained age was used as the underlying time variable in regression models. All analyses were conducted using SAS v. 9.2 (SAS Institute Inc., USA).

RESULTS

There were 255 024 participants included in analyses. At recruitment, 47.4% were aged 45–59 years, 37.1% were aged 60–74 years and 15.5% were aged ≥ 75 years. Of participants, 1% ($n = 2472$) had a record of an immunosuppressive condition in the year prior to enrolment, 6% ($n = 15\,302$) had a cancer diagnosis and 15% ($n = 37\,676$) had severe physical limitations according to the standardized scale. There were 497 classified with both immunosuppression and cancer and 1143 classified with immunosuppression and severe physical limitation.

Over 940583 person-years of follow-up, 7771 participants had a zoster diagnosis of whom 253 (3.3%) were hospitalized. Of those hospitalized, 74% ($n = 187$) had zoster as the principal diagnosis. Overall incidence increased with age from 4.4/1000 person-years in those aged 45–49 to 12.1/1000 person-years in those aged >80 years. The increase was mostly observed between the ages of 45–75 years and across almost all age groups women had significantly higher rates than men (Fig. 1). For hospitalizations, the incidence was 0.01/1000 person-years in 45–49 year olds increasing sharply to 0.9 in those aged over >80 years (Fig. 2). Differences between men and women were less conspicuous in the hospitalization data.

The age- and sex-adjusted analyses are shown in Figure 3(a–c). The greatest age- and sex-adjusted hazard

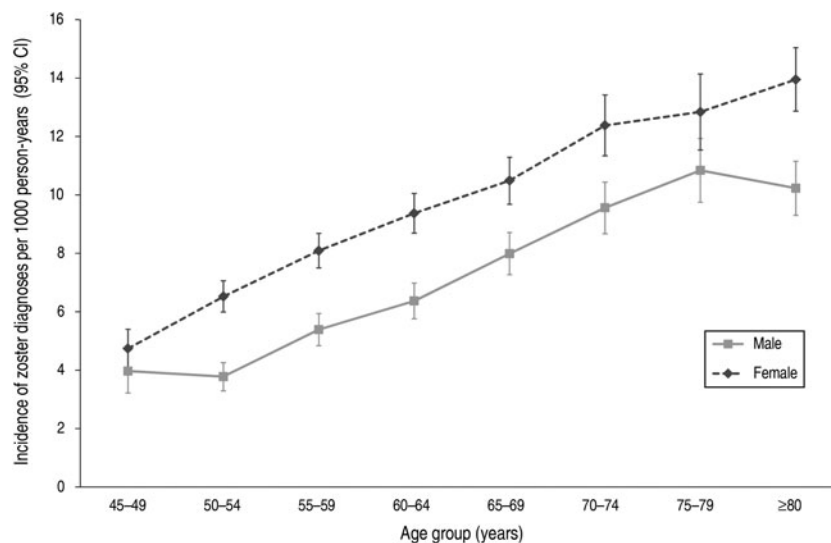


Fig. 1. Incidence of zoster diagnoses per 1000 person-years by attained age and sex.

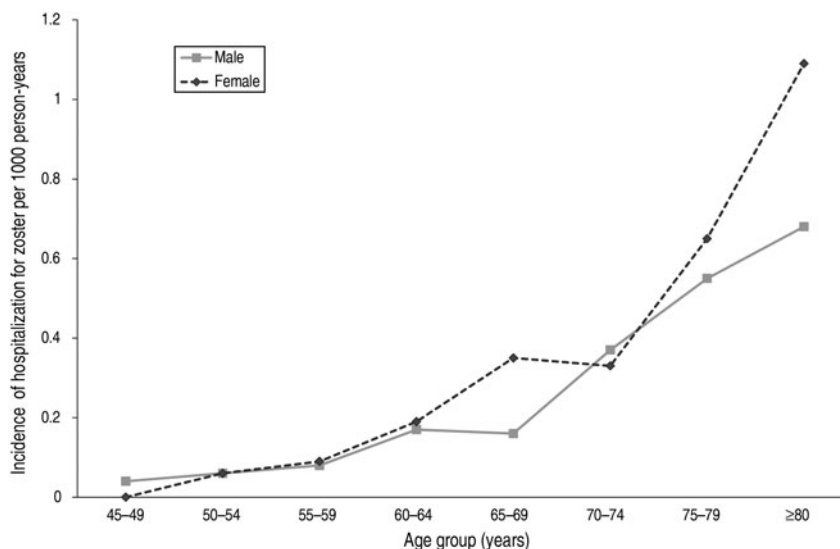


Fig. 2. Incidence of zoster hospitalization per 1000 person-years by attained age and sex.

ratios (HR) for zoster were found in those with a recent immunosuppressive condition (HR 1.76, 95% CI 1.48–2.09). In multivariate analyses, the relative risks for most of the characteristics identified in the age- and sex-adjusted analyses remained statistically significant (Fig. 4) with little attenuation. The risk of zoster remained greatest in those with a recent immunosuppressive condition [adjusted HR (aHR) 1.58, 95% CI 1.32–1.88, $P < 0.0001$]. Other characteristics associated with higher risks included female sex (aHR 1.36, 95% CI 1.30–1.43, $P < 0.0001$), prior cancer diagnosis (aHR 1.35, 95% CI 1.24–1.46, $P < 0.0001$) and

severe physical limitation compared to no limitation (aHR 1.33, 95% CI 1.23–1.43, $P < 0.0001$). When we restricted the outcome definition to hospitalizations for zoster only, i.e. focusing on risks for more serious disease, the only factors from the multivariate model that remained significant were immunosuppressive condition (aHR 3.78, 2.18–6.55, $P < 0.0001$), recent cancer diagnosis (aHR 1.78, 1.24–2.56, $P = 0.002$) and physical limitation (aHR 2.50, 1.56–4.01, $P = 0.0001$ and aHR 1.65, 1.05–2.59, $P = 0.03$ for, respectively, severe and moderate limitation compared to reporting no limitations).

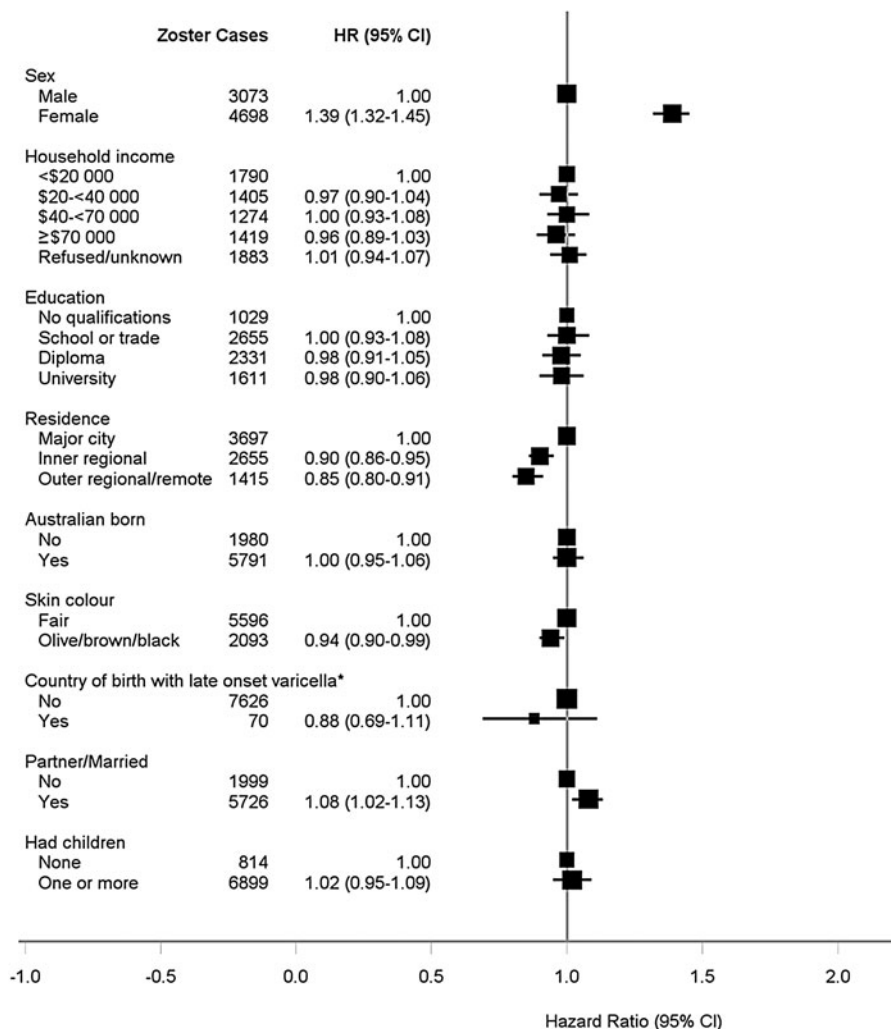


Fig. 3a. Age- and sex-adjusted hazard ratios for zoster according to sociodemographic characteristics. * Includes Bangladesh, India, Malaysia, Pakistan, Singapore, Sri Lanka and Caribbean and Central American countries classified by the Standard Australian Classification of Countries.

Subgroup analyses (results not shown) did not demonstrate substantial differences compared to the main analyses. In particular the association of severe physical limitation with zoster risk remained significant in those more likely to be accessing health services, i.e. for those with severe physical limitation *vs.* none; those living in major cities (aHR 1.28, 95% CI 1.15–1.43); those attending cancer screening programmes (aHR 1.30, 95% CI 1.20–1.41); and those using supplements (aHR 1.27, 95% CI 1.15–1.41). We also found that the effect of having a severe physical limitation increased the risk of zoster when combined with other risk factors. For example, compared to those without severe physical limitations, cancer or immunosuppression, fully adjusted HR for zoster in those with severe physical limitations alone

was 1.24 (95% CI 1.16–1.33), for those with immunosuppression or cancer 1.34 (95% CI 1.21–1.47) and for those with severe physical limitations and immunosuppression or cancer 1.85 (95% CI 1.61–2.12).

DISCUSSION

Our study identified a number of characteristics, other than age, that were associated with the incidence of zoster. Some factors, such as female sex [5, 25, 26], skin colour [6, 26], smoking [6], immunosuppressive conditions, in particular HIV [2], recent cancer [10, 27] and other chronic diseases [26, 28] have been described by other authors. More novel findings included the 30% increase in risk of a diagnosis in individuals with severe physical limitations and the more

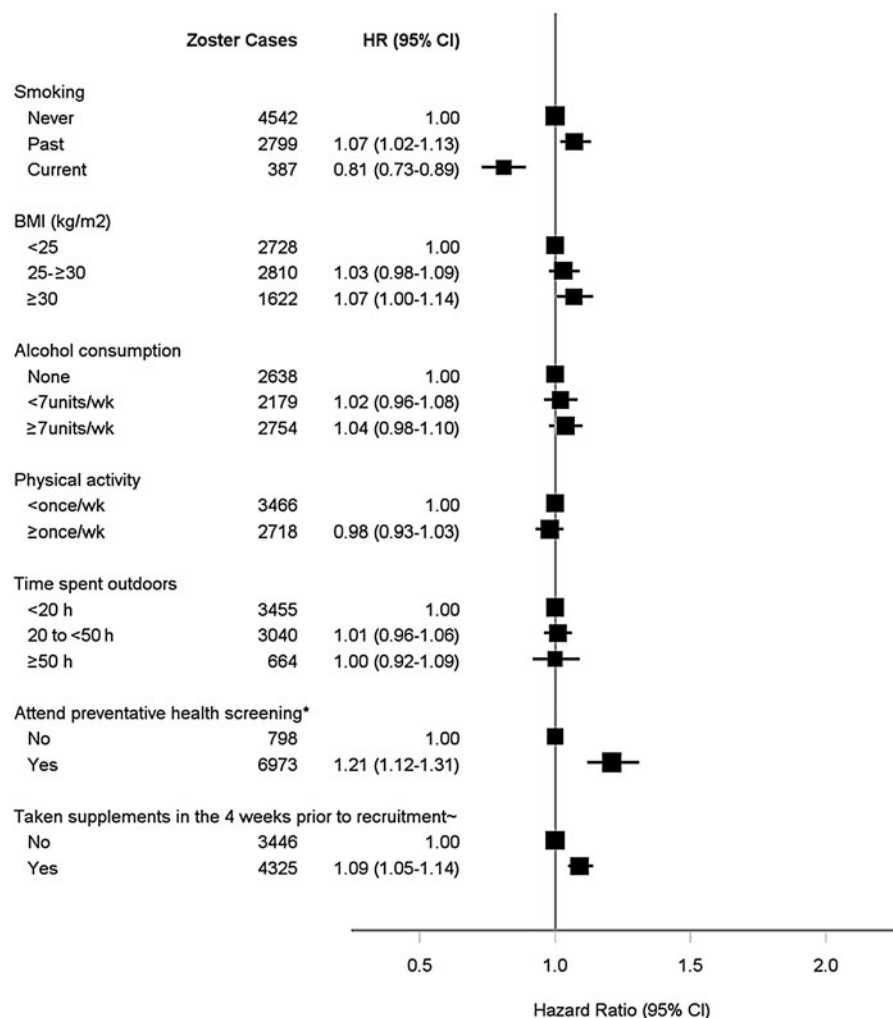


Fig. 3b. Age- and sex-adjusted hazard ratios for zoster according to potentially modifiable characteristics. (* See Methods section.)

than twofold risk of hospitalization, taking into account age and other comorbidities. These findings have important implications for who potentially could be prioritized to receive vaccination.

The strengths of our study include the large sample size, prospective design and ability to mutually adjust analyses for multiple potential confounding factors, including measures of health service use, income and education. Our ascertainment of a zoster diagnosis was based primarily on a prescription record of a highly specific treatment. Not all cases of zoster would be diagnosed and result in treatment so this method may have underestimated rates. It is also possible that treatment uptake may differ by age, leading to differential ascertainment. However, compared to published data from eight [10, 11, 18, 22, 25, 26, 29, 30] other large sources reporting zoster incidence in unvaccinated populations, which used methods

ranging from clinician confirmation of self-report in a clinical trial setting [11], physician-ascertained outpatient data [22] and general practice surveillance systems [29], we found our estimates of age-specific incidence to be consistent (see Fig. 5). Relying on zoster treatment to ascertain our outcome may be biased by access to health services. We found a higher incidence of zoster in those who attended cancer screening and those taking supplements and a lower incidence in those living in regional and remote areas, consistent with a health service access effect. However when we adjusted for these factors in the multivariate analyses there was limited attenuation of the hazard ratios obtained from the analysis with minimal adjustment (age and sex only; Fig. 3) suggesting that these factors do not substantially confound the associations described. It is also possible, given the multiple risk factors examined, that spurious associations may

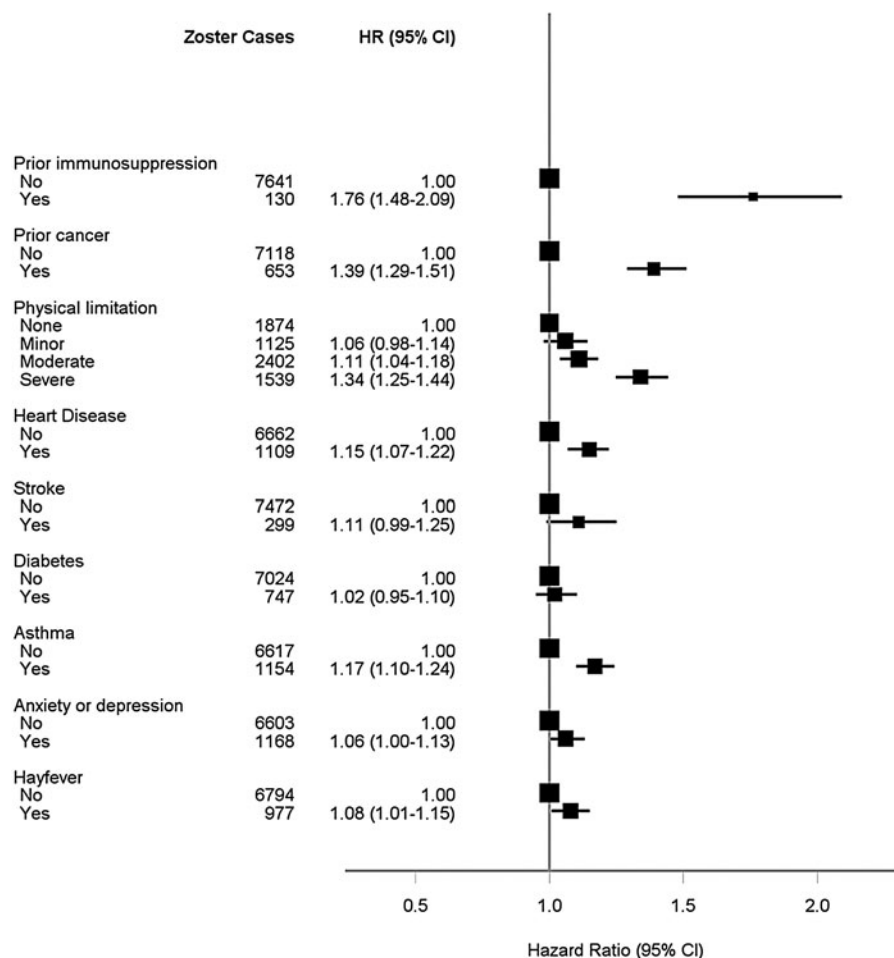


Fig. 3c. Age- and sex-adjusted hazard ratios for zoster according to illness and disability.

arise; however, our main results are consistent with other studies.

With the widespread vaccination of children through national varicella immunization programmes, there is substantial interest in whether environmental exposure may boost the immune response in previously infected adults to prevent future episodes of zoster. Exposure of adults to VZV through contact with infectious children has been proposed [8] although a recent review suggested inconsistencies in the evidence [31]. Data from our study did not appear to support this immune boosting theory. We found no difference in zoster risk in those who had children (although this was a crude measure of exposure) and zoster risks were consistently higher for women than men. In a cohort of this age, it is likely women would have greater exposure to young children and hence VZV than men.

The increased risks of zoster in those with immunosuppression or cancer are consistent with a hypothesis of decreasing cellular immune function

[16]. It has been suggested that for asthma the increased risk may be due to use of inhaled corticosteroids [28], although we did not have information to specifically examine corticosteroid use (oral or inhaled) in study participants. Our finding of a lower risk of zoster in current smokers (compared to non-smokers) has been reported in other observational studies and lower risk has also been described in racial groups with darker skin colour [6]. There is, however, limited data to support a causal pathway and potential non-causal explanations for our findings include differences in health service access and ease of diagnosis (relative to skin colour). For example, compared to non-smokers, risks in current smokers were lower, and those in past smokers were increased. Current smokers are generally less likely to access healthcare while past smokers may be more health-seeking and have more comorbidities than current smokers and non-smokers, leading to the associations that we observed.

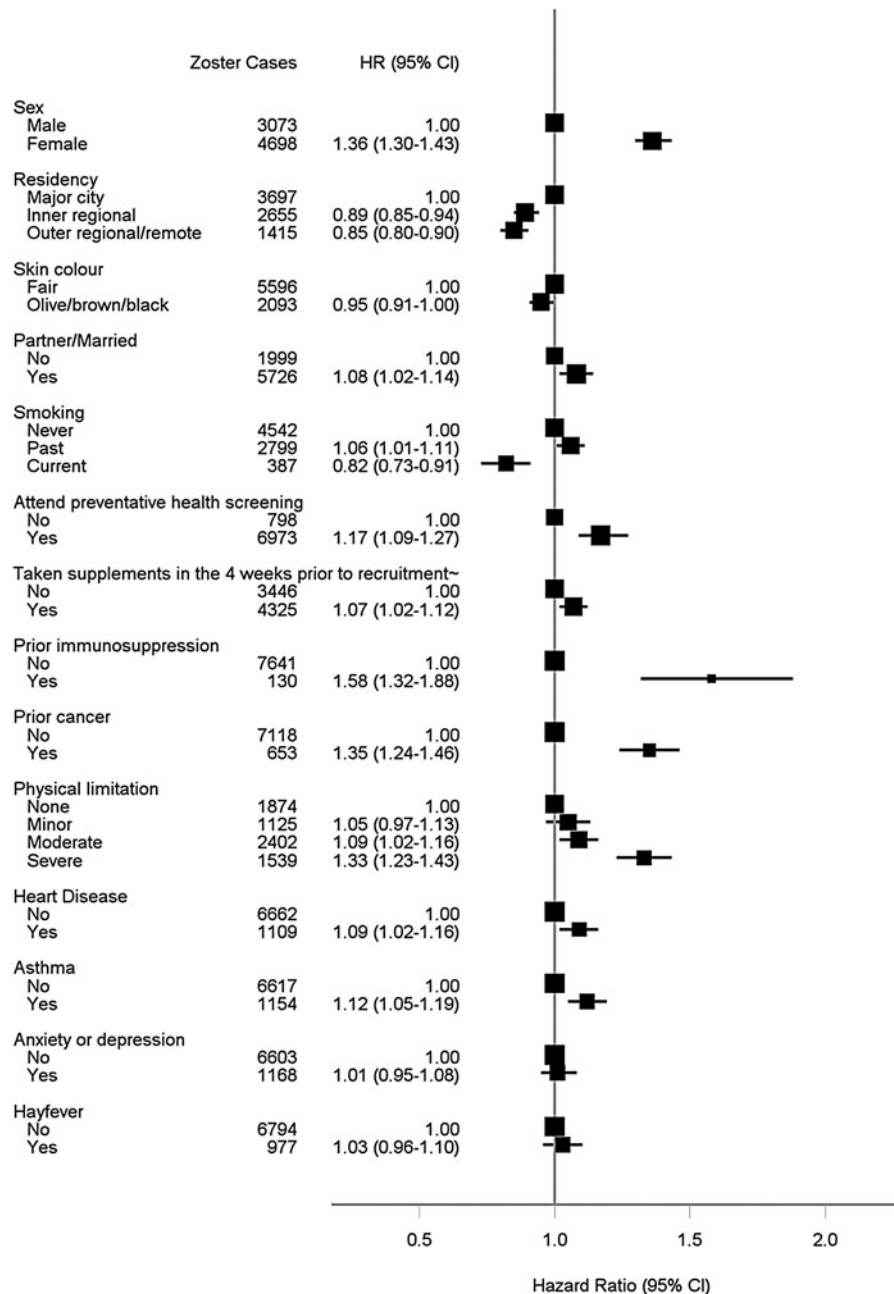


Fig. 4. Factors associated with an incident diagnosis of zoster, adjusted for all other factors in model and age.

The increased risk of zoster and hospitalization for zoster in those with greater physical limitation is a novel finding. In this study, physical limitation was measured at the time of study recruitment using a standardized scale that combines a number of physical activities such as distance able to be walked, stair climbing and activities of daily living (e.g. bathing, dressing, bending, lifting) [24]. It is possible that the association with greater health-related physical limitations may be explained by an underlying decrease in immune function in individuals with chronic

disease or disability [32]. It is also possible that we observed this association because those with greater physical limitations are more likely to access health services, resulting in a greater likelihood of a diagnosis of zoster. However, there was minimal attenuation of risk in the multivariate analysis, and the magnitude of risk remained similar when examined in subgroups restricted to those who were more likely to access services such as those attending cancer screening programmes, suggesting such a bias is unlikely.

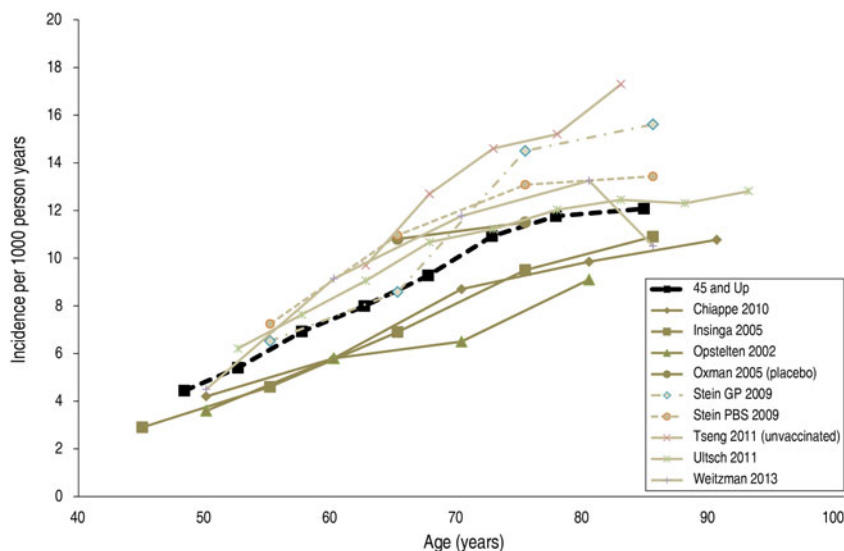


Fig. 5. Age-specific incidence of zoster diagnoses; comparison of 45 and Up Study diagnoses (black symbols) with other published research. (Diagnoses based on linkage to a zoster-specific treatment of ICD-10 coded hospitalization record.)

The absolute risk estimates of herpes zoster from our study suggest that while incidence rises quite consistently with increasing age to about 75 years, the rise in zoster hospitalizations has a more exponential pattern with a rapid increase in those aged >70 years. Other than age, the principal risk factors identified included immunosuppressive condition, female sex, recent cancer, and severe physical limitation; and for zoster hospitalizations immunosuppression, cancer and severe physical limitation were important predictors. The live-attenuated zoster vaccine is contraindicated in those with specific immunosuppressive disorders and in pregnancy [33]. While there are limited clinical trial data demonstrating vaccine efficacy in other vulnerable subgroups identified in our study, for example those with cancer or physical limitations, some recent large observational population-based studies suggest that the vaccine is safe and effective in preventing zoster in those with chronic diseases and in the very elderly [3, 7, 34]. Given the high risk of hospitalization for zoster in the very elderly and also those with predisposing conditions such as prior cancer or severe physical limitations, further evaluation of the effectiveness and cost-effectiveness of zoster vaccine in the risk groups identified here should be a priority.

SUPPLEMENTARY MATERIAL

For supplementary material accompanying this paper visit <http://dx.doi.org/10.1017/S0950268814003653>.

ACKNOWLEDGEMENTS

This research was completed using data collected through the 45 and Up Study (www.saxinstitute.org.au). The 45 and Up Study is managed by the Sax Institute in collaboration with major partner Cancer Council NSW; and partners: the National Heart Foundation of Australia (NSW Division); NSW Ministry of Health; *beyondblue*; Ageing, Disability and Home Care, Department of Family and Community Services; the Australian Red Cross Blood Service; and Uniting Care Ageing. We thank the many thousands of people participating in the 45 and Up Study. The NSW Centre for Health Record Linkage conducted the linkage of the datasets. The NSW Ministry of Health provided de-identified data to the researchers and the Pharmaceutical Benefits data was made available by the Department of Human Services.

This work was supported by the Australian National Health and Medical Research Council (NHMRC grant no. 1048180) and the Clive and Vera Ramaciotti Foundation. The funders had no input into the study design, analysis, interpretation, writing nor decision to submit for publication. A.T.N., B.L., E.B., J.M.K. are recipients of NHMRC fellowships.

DECLARATION OF INTEREST

B.L. has shares in bioCSL the distributor of zoster vaccine in Australia. C.R.M. has done investigator-

driven research on zoster funded by Merck (USA), a Merck randomized controlled trial of zoster vaccination and sits on the WHO SAGE varicella zoster virus working group. A.E.H. has received grant funds for investigator-driven research from GSK and Sanofi Pasteur. A.T.N. has in the past received research funding paid to his institution from a vaccine manufacturer for other previous projects. All other authors have no competing interests to declare.

REFERENCES

1. **Hope-Simpson R.** The nature of herpes zoster: a long-term study and a new hypothesis. *Proceedings of the Royal Society of Medicine* 1965; **58**: 9–20.
2. **Thomas S, Hall A.** What does epidemiology tell us about risk factors for herpes zoster? *Lancet Infectious Diseases* 2004; **4**: 26–33.
3. **Langan S, et al.** Herpes zoster vaccine effectiveness against incident herpes zoster and post-herpetic neuralgia in an older US population: a cohort study. *PLoS Medicine* 2013; **10**: e1001420.
4. **Buchbinder S, et al.** Herpes zoster and human immunodeficiency virus infection. *Journal of Infectious Diseases* 1992; **166**: 1153–1156.
5. **Fleming D, et al.** Gender differences in the incidence of shingles. *Epidemiology and Infection* 2003; **132**: 1–5.
6. **Schmader KE, et al.** Race and stress in the incidence of herpes zoster in older adults. *Journal of the American Geriatrics Society* 1998; **46**: 973–977.
7. **Zhang J, et al.** Association between vaccination for herpes zoster and risk of herpes zoster infection among older patients with selected immune-mediated diseases. *Journal of the American Medical Association* 2012; **308**: 43–49.
8. **Thomas S, Wheeler J, Hall A.** Contacts with varicella or with children and protection against herpes zoster in adults: a case-control study. *Lancet* 2002; **360**: 678–682.
9. **Irwin M, et al.** Cellular immunity to varicella-zoster virus in patients with major depression. *Journal of Infectious Diseases* 1998; **178**: S104–108.
10. **Weitzman D, et al.** A population based study of the epidemiology of Herpes Zoster and its complications. *Journal of Infection* 2013; **67**: 463–469.
11. **Oxman M, et al.** A vaccine to prevent herpes zoster and postherpetic neuralgia in older adults. *New England Journal of Medicine* 2005; **352**: 2271–2284.
12. **Schmader K, et al.** Persistence of the efficacy of zoster vaccine in the Shingles Prevention Study and the Short-Term Persistence Substudy. *Clinical Infectious Diseases* 2012; **55**: 1320–1328.
13. **45 and Up Study Collaborators, Banks E, Redman S, et al.** Cohort profile: the 45 and up study. *International Journal of Epidemiology* 2008; **37**: 941–947.
14. **Centre for Health Record Linkage.** (www.cherel.org.au).
15. **National Centre for Classification in Health (Sydney).** The international statistical classification of diseases and related health problems, 10th revision, Australian Modification (ICD-10-AM), 2nd edn. Lidcombe, NSW: National Centre for Classification in Health Sydney, 2000.
16. **Dworkins R, et al.** Recommendations for the management of herpes zoster. *Clinical Infectious Diseases* 2007; **44**: S1–26.
17. **Centers for Disease Control and Prevention.** Prevention of herpes zoster. Recommendations of the Advisory Committee on Immunization Practices. *Morbidity and Mortality Weekly Report* 2008; **57**: RR-5.
18. **Stein A, et al.** Herpes zoster burden of illness and health care resource utilisation in the Australian population aged 50 years and older. *Vaccine* 2009; **27**: 520–529.
19. **MacIntyre C, Chu C, Burgess M.** Use of hospitalization and pharmaceutical prescribing data to compare the prevaccination burden of varicella and herpes zoster in Australia. *Epidemiology and Infection* 2003; **131**: 675–682.
20. **Yawn B, Wollan P, Sauver J.** Comparing shingles incidence and complication rates from medical record review and administrative database estimates: how close are they? *American Journal of Epidemiology* 2011; **174**: 1054–1061.
21. **Jackson LA, Reynolds M, Harpaz R.** Hospitalizations to treat herpes zoster in older adults: causes and validated rates. *Clinical Infectious Diseases* 2008; **47**: 754–9.
22. **Ultsch B, et al.** Herpes zoster in Germany: quantifying the burden of disease. *BMC Infectious Diseases* 2011; **11**: 173.
23. **Australian Institute of Health and Welfare.** Rural, regional and remote health: a guide to remoteness classifications. Canberra: AIHW Catalogue, PHE 53, 2004.
24. **Hays R, et al.** Item response theory analyses of physical functioning items in the Medical Outcomes Study. *Medical Care* 2007; **45**: S32–S8.
25. **Opstelten W, et al.** Gender as an independent risk factor for herpes zoster: a population-based prospective study. *Annals of Epidemiology* 2006; **16**: 692–695.
26. **Tseng HF, et al.** Herpes zoster vaccine in older adults and the risk of subsequent herpes zoster disease. *Journal of the American Medical Association* 2011; **305**: 160–166.
27. **Habel L, et al.** The epidemiology of herpes zoster in patient with newly diagnosed cancer. *Cancer Epidemiology Biomarkers and Prevention* 2013; **22**: 82–90.
28. **Forbes H, et al.** Quantification of risk factors for herpes zoster: population based case-control study. *British Medical Journal* 2014; **348**: g2911.
29. **Chiappe S, et al.** Herpes zoster: burden of disease in France. *Vaccine* 2010; **28**: 7933–7938.
30. **Insinga R, et al.** The incidence of herpes zoster in a United States administrative database. *Journal of General Internal Medicine* 2005; **20**: 748–753.
31. **Ogunjimi B, Van Damme P, Beutels P.** Herpes zoster risk reduction through exposure to chickenpox patients:

- a systematic multidisciplinary review. *PLoS ONE* 2013; **8**: e66485.
32. **Castle S.** Clinical relevance of age-related immune dysfunction. *Clinical Infectious Diseases* 2000; **31**: 578–585.
33. **Merck & Co.** (www.merck.com/product/usa/pi_circulars/z/zostavax/zostavax_pi2.pdf).
34. **Morrison V, et al.** Safety of zoster vaccine in elderly adults following documented herpes zoster. *Journal of Infectious Diseases* 2013; **208**: 559–563.