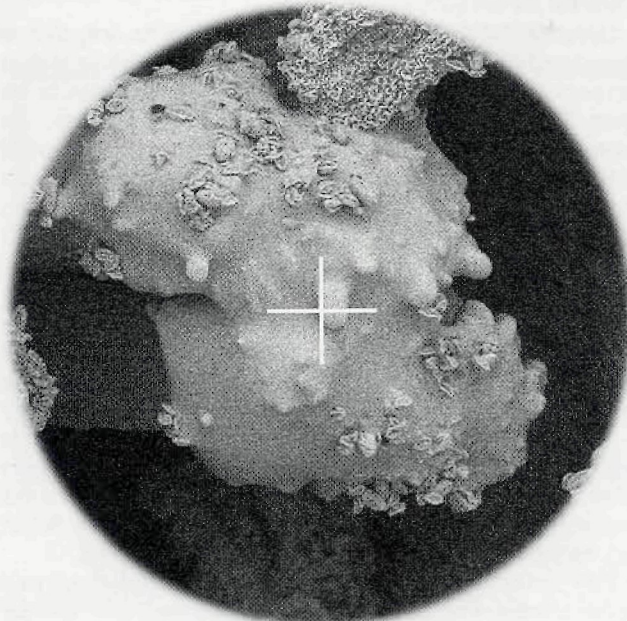


Topcon Introduces Opti-SEM.™

A Whole New Way Of Looking At An Old Problem.



Optical Image



SEM Image

The Built-In Targeting Microscope Lets You Actually Find What You Want To See.
Think What That Means For Productivity.

With magnification, sometimes more *is* less. Locating a SEM target on a large, complex surface can waste a lot of time. Every time.

An Old Astronomer's Trick.

Astronomers use a small, broad field telescope to aim the main telescope. How easy. How productive. So Opti-SEM borrowed the idea. Its built-in 5x to 40x optical microscope makes targeting just as easy for you.

In fact, everything is easy with Opti-SEM. The Windows GUI interface is so familiar, the operator needs little training. And image averaging assures a clean, crisp image every time. No matter whether you output to digital, video or Polaroid.

Topcon's #1 Target—Affordable Flexibility.

Opti-SEM's stand-alone, industry-standard computer helps keep you at the state-of-the-art for less. Hardware and software upgrades are local and quick. Now when technology



advances, you can afford to move with it.

Better yet, there's an Opti-SEM 300 to meet your particular needs. Including a low-vacuum version. So set your sights on the best value in SEMs today. Topcon. Call 1-800-538-6850 for complete information.



Our Focus Is Clear...To Provide The Best Value
In SEMs Today.