

American Antiquity

January 2001

3 Editor's Corner

SPECIAL SECTION

5 Deciphering the Organization of Production in Chaco Canyon
Catherine M. Cameron and H. Wolcott Toll

14 Production and Consumption in a Sacred Economy: The Material Correlates of High Devotional Expression at Chaco Canyon
Colin Renfrew

26 Economic Support of Chaco Canyon Society
Timothy Earle

36 Matrilocality, Corporate Strategy, and the Organization of Production in the Chacoan World
Peter N. Peregrine

47 Household Production in Chaco Canyon Society
Melissa Hagstrum

56 Making and Breaking Pots in the Chaco World
H. Wolcott Toll

79 Pink Chert, Projectile Points, and the Chacoan Regional System
Catherine M. Cameron

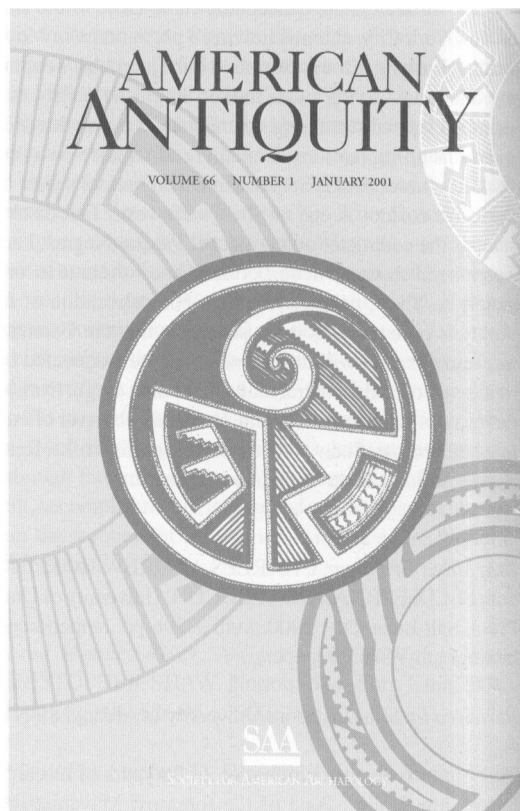
103 The Organization of Turquoise Production and Consumption by the Prehistoric Chacoans
Frances Joan Mathien

119 Going Against the Grain: Wood Production in Chacoan Society
Thomas C. Windes and Peter J. McKenna

ARTICLE

141 One Person's Food: How and Why Fish Avoidance May Affect the Settlement and Subsistence Patterns of Hunter-Gatherers
M. E. Malainey, R. Przybylski, and B. L. Sherriff

REVIEWS AND BOOK NOTES



NOTICE TO AUTHORS

Latin American Antiquity publishes original papers on the archaeology, prehistory, and ethnohistory of Latin America, i.e., Mesoamerica, Central America, and South America, together with culturally affiliated adjacent regions. Papers may also treat more general theoretical and methodological issues with relevance to Latin America. Authors submit manuscripts to the editor for consideration as ARTICLES or REPORTS in English, Spanish, or Portuguese. Authors should submit an original and three copies of their manuscripts (including all figures, tables, references, and notes), along with an abstract in both English and Spanish. Detailed information on policy, style, and technical matters of manuscript preparation is given in English in the "Editorial Policy, Information for Authors, and Style Guide for *American Antiquity* and *Latin American Antiquity*," which appeared in September 1992 (vol. 3, no. 3) and in Spanish in "Código editorial, información para autores y guía estilística para *American Antiquity* and *Latin American Antiquity*," which appeared in July 1997 (vol. 8, no. 2). This information is also available in English through the World Wide Web at <http://www.saa.org/Publications/StyleGuide/styframe.html>. For additional information, updates, or clarification, consult the managing editor at the SAA office in Washington, D.C.

BOARD OF DIRECTORS OF THE SOCIETY FOR AMERICAN ARCHAEOLOGY

Officers

President: KEITH KINTIGH, Department of Anthropology, Arizona State University, Box 872402, Tempe, AZ 85287

President-Elect: ROBERT L. KELLY, Department of Anthropology, University of Wyoming, Laramie, WY 82071

Secretary: BARBARA LITTLE, Cultural Resources, National Park Service, 1849 C Street, N.W., Suite 400, Washington, DC 20240

Secretary-Elect: SUSAN J. BENDER, Department of Anthropology, Skidmore College, Saratoga Springs, NY 12866

Treasurer: PAUL MINNIS, Department of Anthropology, University of Oklahoma, Norman, OK 73019-0001

Board Members-at-Large

KENNETH M. AMES, Department of Anthropology, Portland State University, PO Box 751, Portland, OR 97207-0751

WILLIAM H. DOELLE, Desert Archaeology, Inc., 3975 N. Tucson Blvd., Tucson, AZ 85716

REBECCA HAWKINS, Algonquin Consultants, 3327 Bishop Street, Cincinnati, OH 45220-2105

JANET LEVY, Department of Anthropology, 9201 University City Boulevard, University of North Carolina-Charlotte, Charlotte, NC 28223-1000

SARAH W. NEUSIUS, Department of Anthropology, Indiana University of Pennsylvania, Indiana, PA 15705-1081

Ex-officio Executive Board Member

TOBI A. BRIMSEK, Executive Director, Society for American Archaeology, 900 Second Street NE, Suite 12, Washington, DC 20002-3557

ARTICLES

- 5 Beginnings of Village Life in Eastern Mesoamerica
Rosemary A. Joyce and John S. Henderson
- 25 Volcanism, Ecology, and Culture: A Reassessment of the Volcán Ilopango TBJ Eruption in the Southern Maya Realm
Robert A. Dull, John R. Southon, and Payson Sheets
- 45 Majolica in the Early Colonial Andes: The Role of Panamanian Wares
Ross W. Jamieson

REPORTS

- 59 El desarrollo cultural en el valle de Azapa, extremo norte de Chile y su vinculación con los desplazamiento poblacionales altiplánicos
Francisco Rothhammer y Calogero M. Santoro
- 67 Cerro Baúl: A Wari Center on the Tiwanaku Frontier
Patrick Ryan Williams

COMMENTS

- 84 Genetic Evidence and the Origin of Maize
Jeff Bennetzen, Edward Buckler, Vicki Chandler, John Doebley, Jane Dorweiler, Brandon Gaut, Michael Freeling, Sarah Hake, Elizabeth Kellogg, R. Scott Poethig, Virginia Walbot, and Susan Wessler
- 87 Validity of AMS Dates on Maize from the Tehuacán Valley: A Comment on MacNeish And Eubanks
Austin Long and Gayle J. Fritz
- 91 An Interdisciplinary Perspective on the Origin of Maize
Mary W. Eubanks
- 99 A Response to Long's Radiocarbon Determinations That Attempt to Put Acceptable Chronology on the Frit
Richard S. MacNeish

REVIEWS AND BOOK NOTES

Book Review Essays

- 105 Climatic Change and the Classic Maya Collapse: The Return of Catastrophism
Arthur A. Demarest
- The Great Maya Droughts: Water, Life, and Death, by Richardson B. Gill
- 107 *Tropical Frontiers*
Ann Cyphers
- Olmec Art and Archaeology in Mesoamerica, edited by John E. Clark and Mary E. Pye
- 109 In the Land of the Chichimecs?
Christopher S. Beekman
- Arqueología y Etnohistoria: La Región del Lerma, edited by Eduardo Williams and Phil C. Weigand