



Cooling Stages

Recirculating Heaters
and Chillers

Film Thickness Monitors

Sputter Coaters

SEM/TEM Carbon Coaters

Vacuum Evaporators

Glow Discharge Systems

RF Plasma Etchers/
Plasma Reactors

Critical Point Dryers

Freeze Dryers

Cryo-SEM Preparation
Systems

Vacuum Pumps & Accessories

Evaporation Supplies

well equipped...

EMS is committed to providing the highest quality products along with competitive pricing, prompt delivery and outstanding customer service.

not just products...

Electron Microscopy Sciences is pleased to announce that a new brochure for electron microscope specimen preparation equipment is available, including 20 pages of articles reviewing electron microscope preparation techniques. These are:

- Sputter Coating Techniques and Applications
- Silver as a Removable Coating for Scanning Electron Microscopy
- Carbon Coating Techniques and Applications
- Plasma Etching and Ashing Techniques and Applications
- A summary of the Critical Point Drying Method
- Freeze Drying Principles
- Cryo-SEM — the Advantages



The new brochure as well as the EMS printed catalog and CD-ROM eBook can be ordered on line.

For more information, please visit our website at www.emsdiasum.com



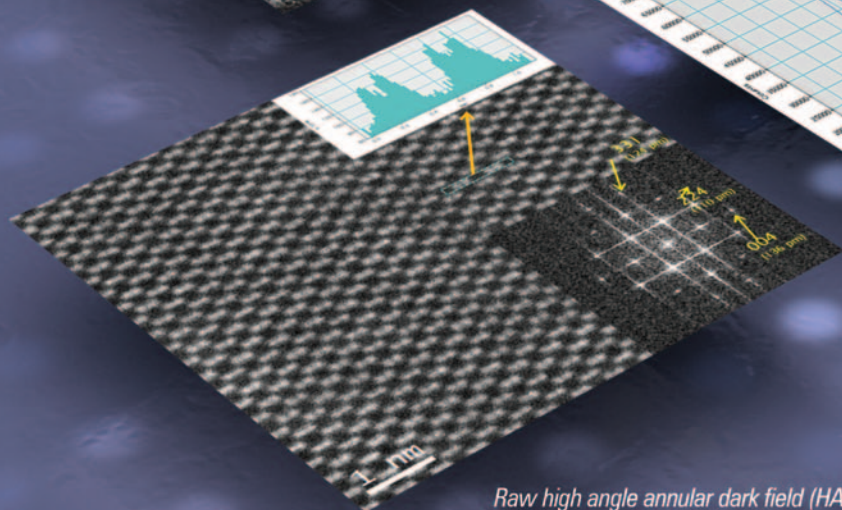
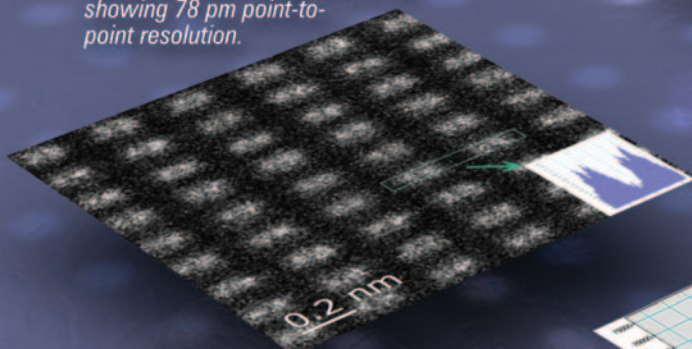
**Electron
Microscopy
Sciences**

Electron Microscopy Sciences
P.O. Box 550 • 1560 Industry Rd. • Hatfield, Pa 19440
Tel: (215) 412-8400 • Fax: (215) 412-8450
email: sgkckc@aol.com • www.emsdiasum.com

Unrivaled Raw Data You Can Believe.

Cold FEG S/TEM sets a new benchmark
for aberration-corrected imaging
and chemical mapping.*

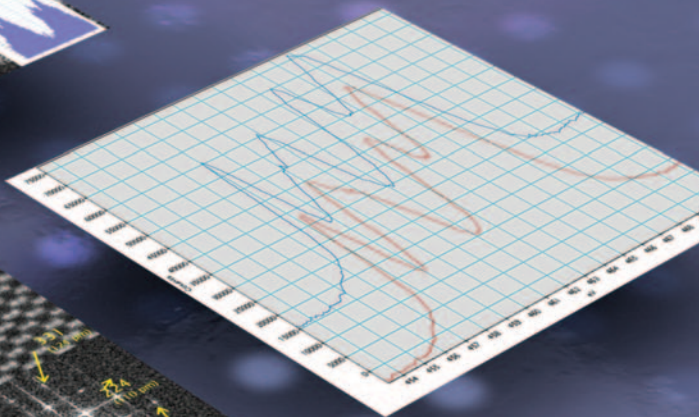
Raw high angle annular dark field (HAADF) STEM image of Si (112) showing 78 pm point-to-point resolution.



Contact us for a demo and
the raw data is yours!

Raw high angle annular dark field (HAADF)
STEM image of Si (110) at 80 kV.

EELS spectra of rutile and anatase
 TiO_2 showing fine structure differences
in the Ti-L_{2,3} edge made visible by the
low energy spread of Cold FEG.



*Field
retrofittable

JEM ARM200F

JEOL

Another
Extreme Imaging
Solution

Global Solutions Provider for Advanced Technology
www.jeolusa.com • salesinfo@jeol.com
978-535-5900

Cold Atomic Resolution S/TEM